

Department for Environment, Food and Rural Affairs

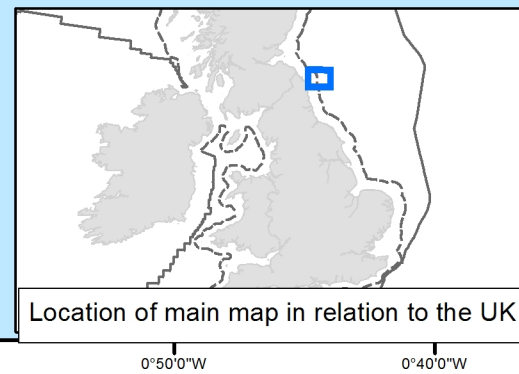
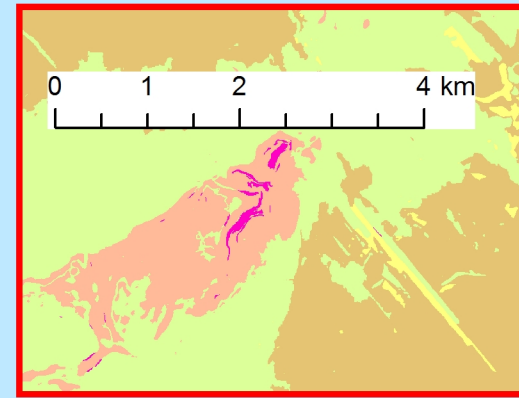
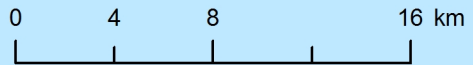
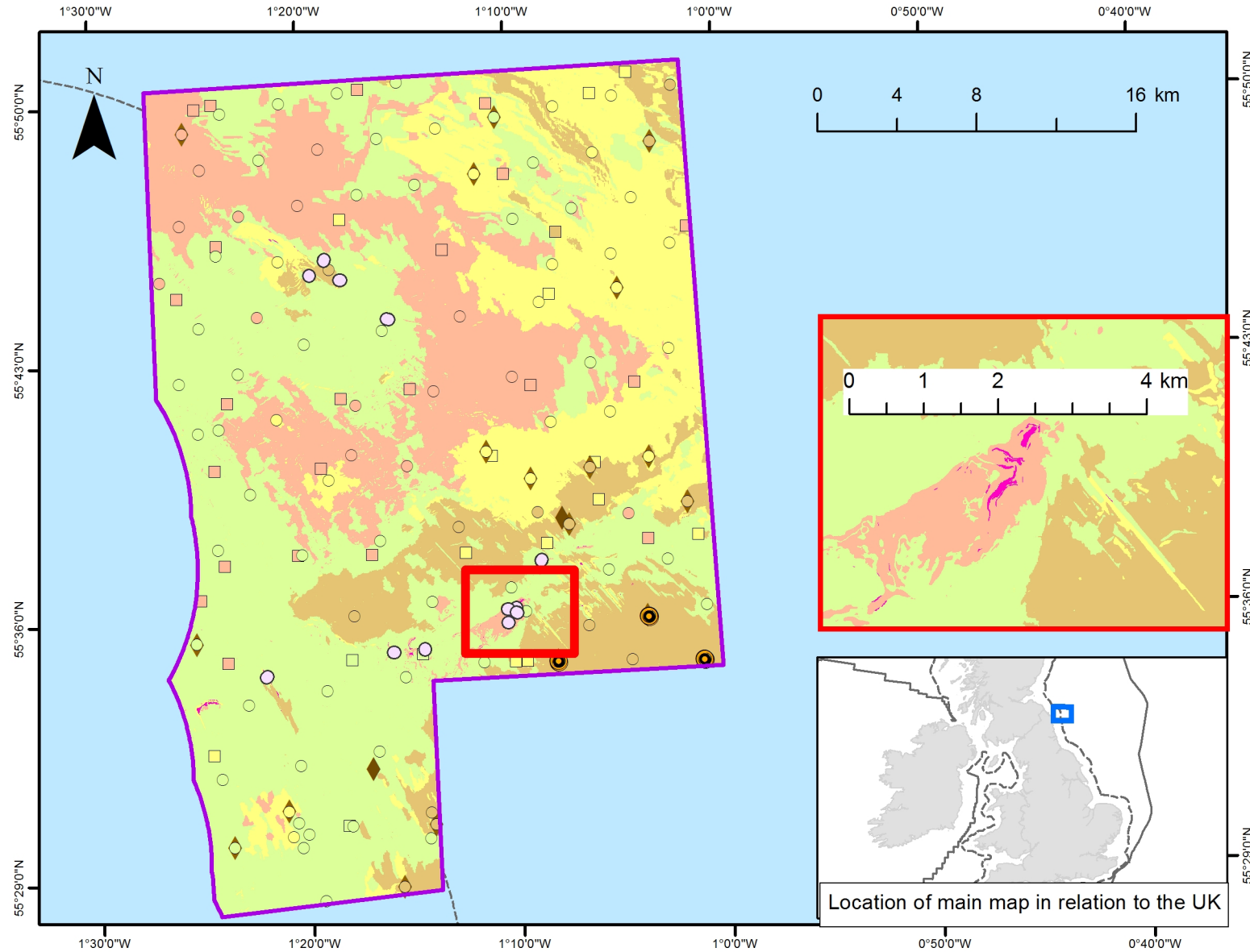
Farnes East MCZ

Feature Map

17 January 2016

The following map shows where the features protected by this Marine Conservation Zone (MCZ) are located. A range of different types of surveys have been used to create this map. More detailed information on the techniques used and the features themselves can be found here: <http://jncc.defra.gov.uk/page-6658>

Farnes East MCZ



Legend

- MCZ boundary
- - - Territorial Sea Limit
- UK Continental Shelf
- ◆ Ocean quahog (*Arctica islandica*)
- ⊙ Sea pens and burrowing megafauna

Cefas led survey (MB0120) video transect

- Moderate energy circalittoral rock

Cefas led survey (MB0120) grab samples

- Subtidal coarse sediment
- Subtidal sand
- Subtidal mud
- Subtidal mixed sediments

British Geological Survey sample points

- Subtidal coarse sediment
- Subtidal sand
- Subtidal mud
- Subtidal mixed sediments

Cefas led survey (MB0120) habitat map

- Moderate energy circalittoral rock
- Subtidal coarse sediment
- Subtidal mixed sediments
- Subtidal mud
- Subtidal sand

The sea-pen and burrowing megafauna communities data points were taken on the Cefas survey in 2012. The ocean quahog data points were taken from a sample from the International Bottom Trawl Survey in 2009 and grab samples from the Cefas survey in 2010 and 2012. The Cefas led survey video transects were collected on the Cefas survey in 2014. The Cefas led survey grab samples were taken on the Cefas surveys in 2012 and 2014 and the habitat map was derived from analysis of the acoustic data and ground-truthing data collected on these surveys. The British Geological Survey PSA data were downloaded from http://mapapps2.bgs.ac.uk/geindex_offshore/home.html and translated into EUNIS. More detailed advice available from the JNCC advice documents found here: <http://jncc.defra.gov.uk/page-6658>

2012/14 MB0120 survey data ©JNCC/Cefas. Contains British Geological Survey materials © NERC 2015. UK Territorial Sea Limit. Contains UKHO data © Crown copyright. All rights reserved. The exact limits of the UK Continental shelf are set out in orders made under section 1 (7) of the Continental Shelf Act 1964 and Continental Shelf (Designation of Areas) Order 2013. Combining source layers from UKHO. © Crown copyright © JNCC. Not to be used for navigation. © JNCC 11/2015

Version: 2.4 Plotted: 03/11/15 by CM



© Crown copyright 2016

You may re-use this information (excluding logos) free of charge in any format or medium, under the terms of the Open Government Licence v.3. To view this licence visit www.nationalarchives.gov.uk/doc/open-government-licence/version/3/ or email PSI@nationalarchives.gsi.gov.uk

This publication is available at www.gov.uk/government/publications

Any enquiries regarding this publication should be sent to us at

mcz@defra.gsi.gov.uk

PB 14392