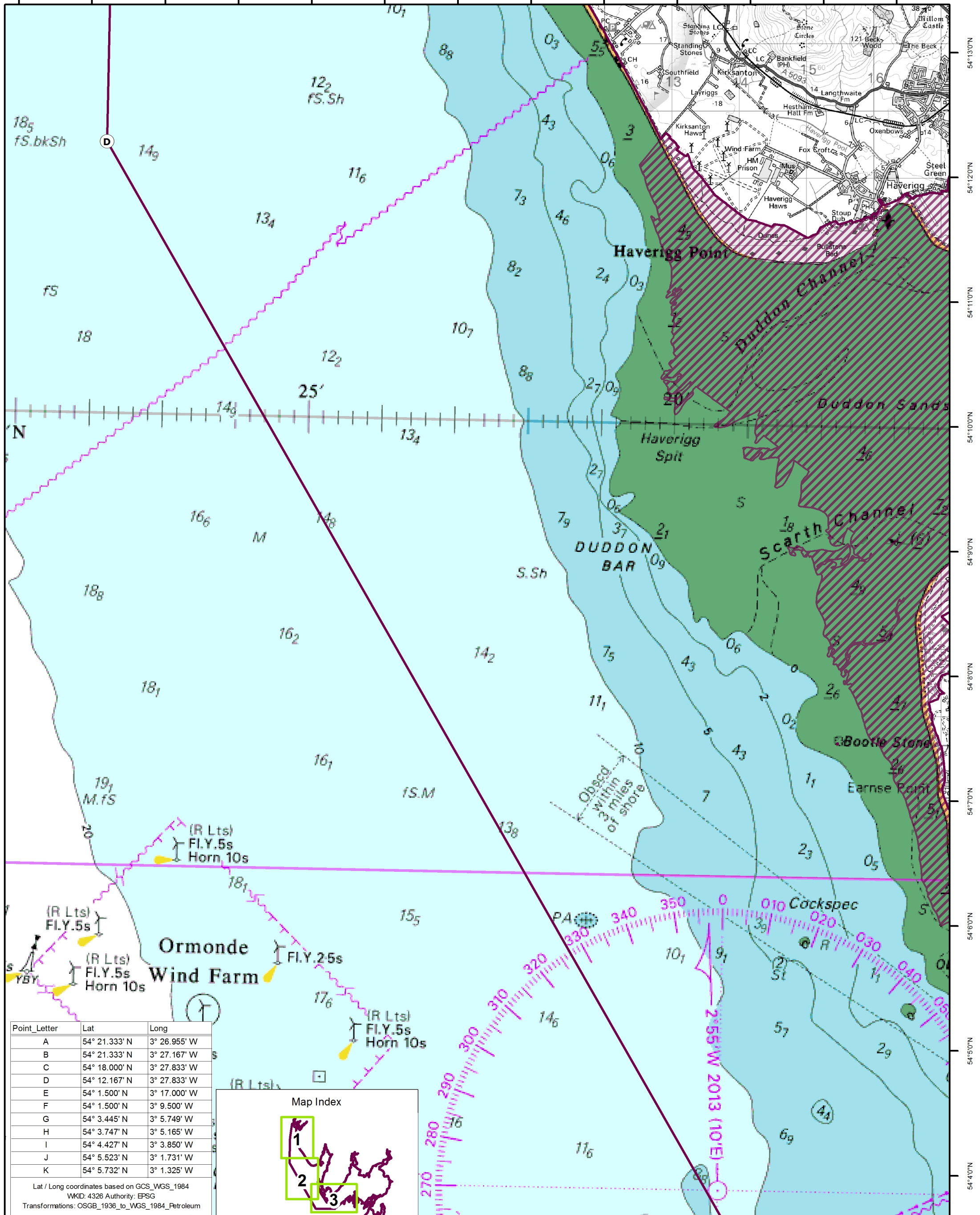






3°29'0"W 3°28'0"W 3°27'0"W 3°26'0"W 3°25'0"W 3°24'0"W 3°23'0"W 3°22'0"W 3°21'0"W 3°20'0"W 3°19'0"W 3°18'0"W 3°17'0"W




**Special Protection Area**  
**Morecambe Bay and Duddon Estuary**  
 Boundary Map  
 Map 2 of 3

-  Special Protection Area  
66898.85 Hectares
-  Already Classified Morecambe Bay  
and Duddon Estuary SPAs
-  12NM Territorial Sea Limit
-  Boundary Coordinates

Reproduced by permission of Ordnance Survey on behalf of HMSO. © Crown copyright and database right 2015. All rights reserved. Ordnance Survey Licence number 100022021. © British Crown Copyright 2015.  
 NOT TO BE USED FOR NAVIGATION.  
 All rights reserved. Permission Number Defra 012013.001. This product has been derived in part from material obtained from the UK Hydrographic Office with the permission of the Controller of Her Majesty's Stationery Office and UK Hydrographic Office (www.ukho.gov.uk).  
 © Natural England 2015

0 0.5 1 2 Km  
 0 0.275 0.55 1.1 NM

Scale 1:50,000 at A3



EU Site Code: UK909997  
 Site Version: 20150723  
 Latitude: 54° 6' 35" N  
 Longitude: 2° 56' 51" W  
 Coordinate System: British National Grid  
 Projection: Transverse Mercator

Area of Marine SPA: 66898.85 Ha  
 668.99 sq Km  
 Grid Ref: SD381686  
 Theme ID: 999997  
 Map Version: 1.0  
 Plotted: 17/12/2015

Note:  
 The boundary shown is derived from large scale Ordnance Survey MasterMap. The landward extent follows MasterMap Mean High Water or MasterMap Mean Low Water, as appropriate, is liable to change and may not match the background detail on this map. Definitive larger scale maps are available on request.