



HMRC Lifetime ISA API Specification

Withdrawn - do not use.

Revision History

Date	Author	Revision	Change
21/10/2016	Andrew Ridout	1.0 Alpha 1	First External release
24/10/2016	Andrew Ridout	1.0 Alpha 2	<p>POST "/lisa/investors" – added 403 for match fail</p> <p>POST "/lisa/investors" – 409 already exists case returns location header</p> <p>POST "/lisa/investors" – error corrected in description with NINO listed twice and no DoB.</p> <p>POST "/lisa/manager/{LISAManagerReferenceNumber}/accounts"</p> <p>Changed from 409 to 403 response codes for two error conditions.</p> <p>PUT "/lisa/manager/{LISAManagerReferenceNumber}/accounts/{accountID}"</p> <p>Changed from 409 to 403 response codes</p> <p>POST "/lisa/manager/{LISAManagerReferenceNumber}/accounts/{accountID}/transactions"</p> <p>Moved compliance check errors from 409 to 403 response codes</p> <p>Moved health status information from LISAINvestor to LISAAccount due to data sharing rule violation. This removed the need to support update of LISAINvestor – so support for PUT has been removed.</p> <p>Fixed a few JSON & JSON schema syntax errors.</p>

Withdrawn - do not use

Table of Contents

REVISION HISTORY	2
INTRODUCTION	5
REFERENCES	5
RESOURCE MODEL	5
HTTP HEADERS	
EARLY TESTING AUTHORISATION	7
PRODUCTION & PRODUCTION SANDBOX AUTHENTICATION	7
ACCEPTED MEDIA TYPES (ACCEPT HEADER)	7
CONTENT-TYPE	7
RESOURCES	8
LISAMANAGER	8
GET "/LISA/MANAGER/{LISAMANAGERREFERENCENUMBER}"	8
PUT, POST AND DELETE ARE NOT SUPPORTED	8
LISAINVESTOR	9
GET "/LISA/INVESTORS/{INVESTORID}"	9
GET "/LISA/INVESTORS?NINO={NINO}&FIRSTNAME={FIRSTNAME}&LASTNAME={LASTNAME}&DOB={DOB}"	9
POST "/LISA/INVESTORS"	10
PUT AND DELETE ARE NOT SUPPORTED.	11
LISAAccount	12
GET "/LISA/MANAGER/{LISAMANAGERREFERENCENUMBER}/ACCOUNTS/{ACCOUNTID}"	12
POST "/LISA/MANAGER/{LISAMANAGERREFERENCENUMBER}/ACCOUNTS/{ACCOUNTID}"	16
PUT "/LISA/MANAGER/{LISAMANAGERREFERENCENUMBER}/ACCOUNTS/{ACCOUNTID}"	17
DELETE IS NOT SUPPORTED.	19
LISATRANSACTION	20
GET "/LISA/MANAGER/{LISAMANAGERREFERENCENUMBER}/ACCOUNTS/{ACCOUNTID}/TRANSACTIONS/{LISATRANSACTIONID}"	20
GET "/LISA/MANAGER/{LISAMANAGERREFERENCENUMBER}/ACCOUNTS/{ACCOUNTID}/TRANSACTIONS"	21
GET "/LISA/MANAGER/{LISAMANAGERREFERENCENUMBER}/ACCOUNTS/{ACCOUNTID}/TRANSACTIONS?STARTDATE={STARTDATE}&ENDDATE={ENDDATE}"	21
GET "/LISA/MANAGER/{LISAMANAGERREFERENCENUMBER}/ACCOUNTS/{ACCOUNTID}/TRANSACTIONS?STARTDATE={STARTDATE}&ENDDATE={ENDDATE}?TRANSACTIONTYPE={TRANSACTIONTYPE}"	21
POST "/LISA/MANAGER/{LISAMANAGERREFERENCENUMBER}/ACCOUNTS/{ACCOUNTID}/TRANSACTIONS"	27
PUT & DELETE ARE NOT SUPPORTED	30
HMRCPAYMENT	31
GET "/LISA/MANAGER/{LISAMANAGERREFERENCENUMBER}/PAYMENTS/{PAYMENTREFERENCE}"	31
GET "/LISA/MANAGER/{LISAMANAGERREFERENCENUMBER}/PAYMENTS?STARTDATE={STARTDATE}&ENDDATE={ENDDATE}"	31
GET "/LISA/MANAGER/{LISAMANAGERREFERENCENUMBER}/PAYMENTS?STARTDATE={STARTDATE}&ENDDATE={ENDDATE}&DIRECTION={DIRECTION}&STATUS={STATUS}"	31
GET "/LISA/MANAGER/{LISAMANAGERREFERENCENUMBER}/PAYMENTS?STARTDATE={STARTDATE}&ENDDATE={ENDDATE}&DIRECTION={DIRECTION}"	31
GET "/LISA/MANAGER/{LISAMANAGERREFERENCENUMBER}/PAYMENTS?STARTDATE={STARTDATE}&ENDDATE={ENDDATE}&STATUS={STATUS}"	31
PUT/POST IS NOT AVAILABLE	31
DELETE IS NOT SUPPORTED	31
HMRCTRANSACTION	34
GET "/LISA/MANAGER/{LISAMANAGERREFERENCENUMBER}/HMRC-TRANSACTIONS/{HMRCTRANSACTIONID}"	34
GET "/LISA/MANAGER/{LISAMANAGERREFERENCENUMBER}/HMRCTRANSACTIONS?PAYMENTREFERENCE={PAYMENTREFERENCE}"	34
GET "/LISA/MANAGER/{LISAMANAGERREFERENCENUMBER}/HMRC-TRANSACTIONS?&STARTDATE={STARTDATE}&ENDDATE={ENDDATE}"	34
PUT/POST IS NOT AVAILABLE	37
DELETE IS NOT SUPPORTED	37

Withdrawn - do not use.

Introduction

This document is an HMRC Digital specification of a RESTful Application Program Interface. The API is being produced to support the introduction of the Lifetime Independent Savings Account or LISA. It is intended that the API must be used by financial organisations who will offer Lifetime ISA products to UK citizens. It has been a decision of HM Treasury that the LISA product will be supported by HMRC as a Digital only offering. Hence this API specification defines the only method offered by HMRC to prospective LISA providers.

HMRC digital intends to engage in API user research with a group of interested financial organisations to discover their user needs. HMRC digital intends to refine the API to meet;

- a) the user needs,
- b) any emerging HMRC technical constraints and
- c) any change in policy or legislation regarding the LISA concept.

This release of the document is marked "Alpha" as it has been produced early in the delivery cycle with the express intent to support the API user research. It is very likely to change. Therefore development against an Alpha API specification is best thought of as a learning exercise. Any effort estimation or costing against the content of this specification must be considered as a rough guide only.

This is a technical specification document. Therefore, the target audience is technical staff operating on behalf of a financial organisation who is considering offering a LISA product. The reader is assumed to have familiarity with RESTful API concepts and JSON and JSON Schema.

References

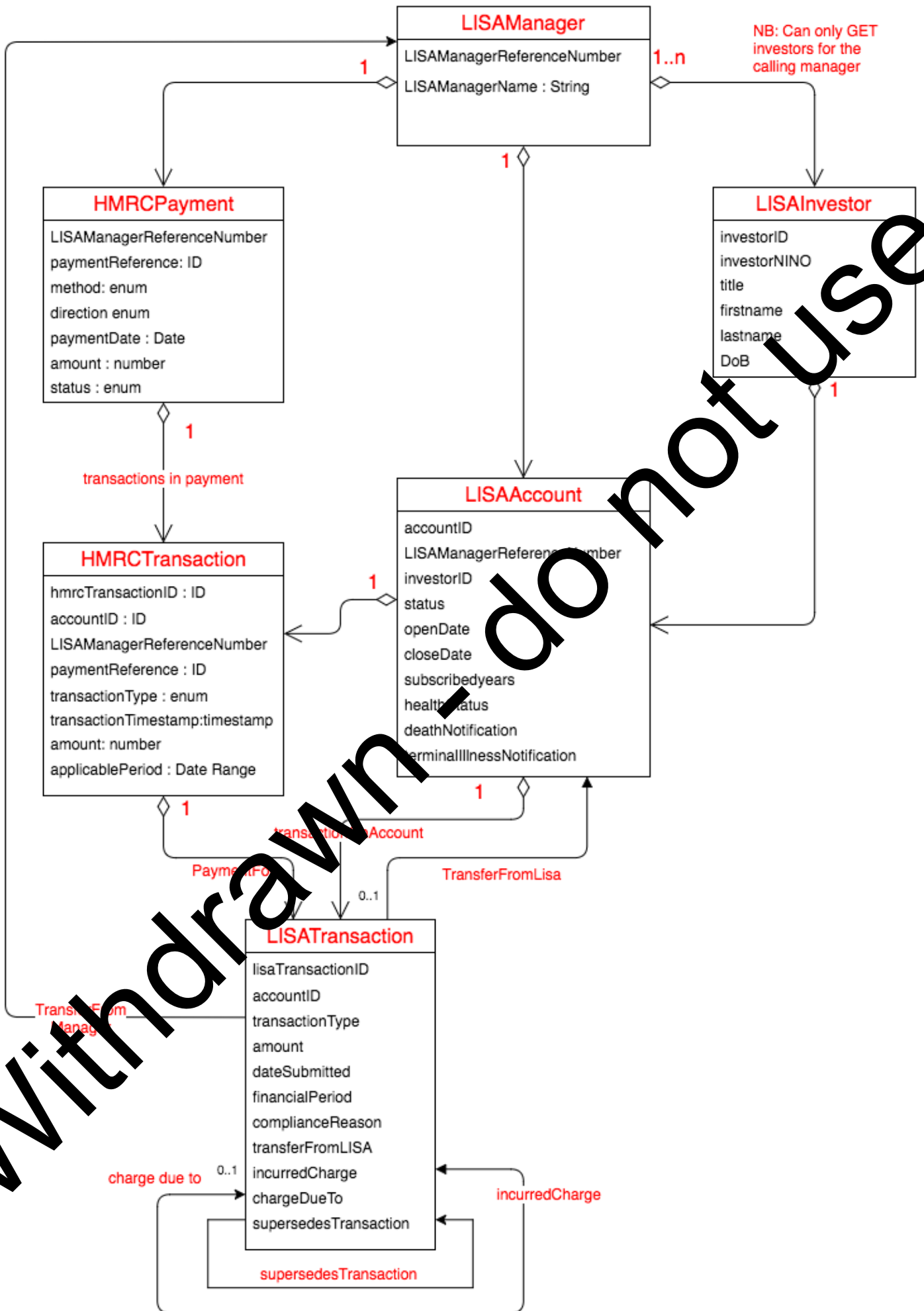
The following references relate to or define the standards used in this document.

Topic	Hyperlink
Hypertext Transfer Protocol 1.1	https://tools.ietf.org/html/rfc7231
JSON Specification	https://tools.ietf.org/html/draft-kelly-json-hal-08
JSON Schema	http://json-schema.org/latest/json-schema-core.html http://json-schema.org/documentation.html
Hypertext Application Language (HAL)	http://stateless.co/hal_specification.html

Resource Model

The resource model shown below depicts the resources that are exposed via the API. Three of the resources are read-only via the API; LISAManager, HMRCPayment and HMRCTransaction. LISAManager is effectively created as part of the LISA registration process – which is not done over API methods. HMRCPayment and HMRCTransaction resources are created by HMRC systems and represent the money transferred between HMRC and the LISA provider in either direction.

Three resources are writable via the API; LISAInvestor, LISAAccount and LISATransaction. These three resources represent data sent from the LISA provider to HMRC. LISAInvestor is a resource that is shared between LISA Providers. LISAAccount represents the creation a LISA account by the LISA provider on behalf of an investor. LISATransaction represents some of the transactions on the LISA account where HMRC has a business reason to need the information.



Withdrawn - do not use

HTTP Headers

Early testing authorisation

OAuth 2.0 Bearer Token with Application restricted endpoint

<https://developer.service.hmrc.gov.uk/api-documentation/docs/authorisation#application-restricted>

Production & Production sandbox authentication

OAuth 2.0 Bearer Token.

The authentication method for the API is yet to be finalised.

<https://developer.service.hmrc.gov.uk/api-documentation/docs/authorisation>

The standard HTTP request header fields and their intended use

Header Field Name	Usage
X-Client-IP	
X-Client-User-ID	
X-Client-Device-ID	
X-Client-Transaction-ID	
X-Client-Software-Instance-ID	
X-Client-Software-Version	

Accepted Media Types (Accept header)

application/vnd.hmrc.1.0+json

Content-Type

Application/json

Withdrawn - do not use.

Resources

LISAManager

Description

This resource models the existence of a registered LISA Manager organisation. It is created by HMRC as a result of a LISA registration. The registration process is not part of the API specification as it is a forms based process with manual verification by HMRC staff.

GET `"/lisa/manager/{LISAManagerReferenceNumber}`

Description

The HTTP GET call fetches a resource that is the primary entry point for the LISA API. It provides a set of links that allow the API developer to discover the URI endpoints for accessing other resources defined in this specification.

HTTP Response Codes

404 not found Lisa Manager has not been registered

403 access denied Lisa Manager requested is not the calling Lisa Manager

200 OK

Example Response

```
{
  "LISAManagerReferenceNumber" : "Z9876543210",
  "LISAProviderName" : "Example Building Society",

  "_links" :
  [
    "self" : {"href" : "/lisa/manager/Z9876543210"},
    "account" : {"href" : "/lisa/manager/Z9876543210/accounts/{accountID}"},
    "accounts" : {"href" : "/lisa/manager/Z9876543210/accounts"},
    "investor" : {"href" : "/lisa/investors/{investorID}"},
    "investorSearch" : {"href" : "/lisa/investors?NINO={NINO}
      &firstname={firstname}&lastname={lastname}&DoB={DoB}"},
    "investors" : {"href" : "/lisa/investors"} // just ones for this LISA Manager – remove?
    "payment" : {"href" : "/lisa/payments/{paymentReference}"},
    "payments" : {"href" : "/lisa/payments"} // remove ?
    "paymentsByDateRange" : {"href" : "/lisa/payments
      &startDate={startDate}&endDate={endDate}"}
  ]
}
```

PUT, POST and DELETE are not supported

The resource is created by HMRC at successful LISA registration.

LISAInvestor

Description

This resource models the citizen who has a LISA account. It is shared between all LISAManagers who hold an account for that LISAInvestor.

GET "/lisa/investors/{investorID}"

Description

This is the primary access mechanism for an already known investor with an existing LISAInvestor resource in existence.

HTTP Response Codes

404 not found

403 forbidden if LISAInvestor exists but does not have accounts belonging to the accessing LISAManager. This error message supplied in the body of the response.

200 OK – returns a Response body with the LISAInvestor resource. An example and the JSON Schema are shown below.

GET "/lisa/investors?NINO={NINO}&firstname={firstname}&lastname={lastname}&DoB={DoB}"

Description

This is the access mechanism for an investor who is new to the LISAManager but for an existing LISAInvestor resource in existence. It should be used when the POST has returned a 409 Conflict response indicating that the resource already exists. All search terms must be supplied and must match according to the matching rules for the call to succeed. The investorID may then be used in the creation of a LISAAccount resource.

HTTP Response Codes

404 not found – Resource does not exist

200 OK – returns a Response body with the LISAInvestor resource. An example and the JSON Schema are shown below.

Response Sample

```
{
  "investorID" : "9876543210",
  "investorNINO" : "AB123456D",
  "title" : "Mr",
  "firstname" : "Ex",
  "lastname" : "Ampl",
  "DoB" : "1973-03-24",

  "_links" : {
    "self" : { "href" : "/lisa/investors/87654321"},
    "account" : { "href" : "/lisa/manager/Z987654321/accounts/{accountID}" },
    "accounts" : { "href" : "/lisa/manager/Z987654321/accounts" }
  }
}
```

Response Schema

```
{
  "$schema": "http://json-schema.org/draft-04/schema#",
  "type": "object",
  "properties":
  {
    "investorID" : {"$ref" : "#/definitions/IDType"},
    "investorNINO": {"$ref" : "#/definitions/NINOType"},
  }
}
```

```

"title" : {"type" : "string"},
"firstname" : {"type" : "string"},
"lastname" : {"type" : "string"},
"DoB" : {"$ref": "#/definitions/ISO8601-Date"},

  "_links" : {
    "type" : "object"
  }
},
"required": ["investorNINO", "title", "firstname", "lastname", "DoB"],
"additionalProperties": false,
"definitions": {
  "ISO8601-Date" :
  {
    "type": "string",
    "pattern": "^\\d{4}-\\d{2}-\\d{2}$"
  },
  "ISO8601-Timestamp" :
  {
    "type" : "string",
    "pattern" : "\\d{4}-\\d{2}-\\d{2}T\\d{2}:\\d{2}:\\d{2}(\\.\\d{2})?([+|-]\\d{2}:\\d{2})?(Z)"
  },
  "IDType": {
    "type": "string",
    "pattern": "^\\d{10}$"},
  "NINOType": {
    "type": "string",
    "pattern": "^[A-Z]{2}\\d{6}[A-D]$"
  }
}
}

```

POST "/lisa/investors"

Description

This call synchronously verifies a match of the LISAINvestor with HMRC systems & fails on no match. The match is done on NINO, firstname, lastname and DoB.

If the LISAINvestor matches HMRC records and does not previously exist, then it is created as a HTTP status code of 201 is returned. An investorID is allocated and the response location header is populated with a link to the newly created resource.

This should be used when a LISAManager has a new customer to tell HMRC about.

It uses NINO as the ID to support normalisation across LISA providers.

If the resource already exists then the POST will return a conflict error response.

Then a GET should be performed using the NINO, firstname, lastname and DoB to discover the investor ID.

Response Codes

201 Resource created

403 Access denied. Used when the match verification fails.

The response body will contain error code and text.

409 Conflict: The response body will contain error code and text.

1. matches already existing resource. Response contains a location header with link to the existing resource.

Request Sample

```
{
  "investorNINO" : "AB123456D",
  "title" : "",
  "firstname" : "",
  "lastname" : "",
  "DoB" : "1975-03-24",
}
```

Request Schema

```
{
  "$schema": "http://json-schema.org/draft-04/schema#",
  "type": "object",
  "properties": {
    "investorID": {"$ref": "#/definitions/IDType"},
    "investorNINO": {"$ref": "#/definitions/NINOType"},
    "title": {"type": "string"},
    "firstname": {"type": "string"},
    "lastname": {"type": "string"},
    "DoB": {"$ref": "#/definitions/ISO8601-Date"},
  },
  "required": ["investorNINO", "title", "firstname", "lastname", "DoB"],
  "additionalProperties": false,
  "definitions": {
    "ISO8601-Date": {
      "type": "string",
      "pattern": "^\\d{4}-\\d{2}-\\d{2}$" },
    "ISO8601-Timestamp": {
      "type": "string",
      "pattern": "\\d{4}-\\d{2}-\\d{2}T\\d{2}:\\d{2}:\\d{2}\\.?(\\d{2})?([+|-]\\d{2}:\\d{2})?|Z" },
    "IDType": {
      "type": "string",
      "pattern": "^\\d{10}$" },
    "NINOType": {
      "type": "string",
      "pattern": "^[A-Z]\\d{6}[A-D]$" }
  }
}
```

PUT and DELETE are not supported.

Indices or resources cannot be modified or deleted.

LISAAccount

Description

Resource represents the existence of a LISA account at a Lisa Manager.

It must be created before a LISATransaction can be created for the account.

AccountID must be generated and supplied by the LISA provider and so is only unique when combined with LISAManagerReferenceNumber. The associated LISAINvestor resource must exist before a LISAAccount is created.

GET "/lisa/manager/{LISAManagerReferenceNumber}/accounts/{accountID}"

Description

Get a single LISAAccount resource using the unique combination of LISAManagerReferenceNumber and accountID. Returns a JSON object in the response body. An example is shown below, as is a JSON schema describing the JSON object.

HTTP Response Codes

403 forbidden - if the account does not belong to the LISAManager

404 not found - if the account does not exist

200 OK – Response body returned

Response Sample

```
{
  "accountID" : "1234567890",
  "LISAManagerReferenceNumber" : "Z9876543210",
  "investorID" : "8765432100",           // link to LISAINvestor
  "status" : "open",
  "openDate" : "2011-02-02",
  "closeDate" : "2015-12-13",           // not present if status is not closed
  "healthStatus" : "default",           // Optional
  "terminalIllnessNotification" : {     // Optional
    "notifiedDate" : "2016-08-01T00:15:35Z"
  },
  "deathNotification" : {              // Optional
    "DoD" : "2016-08-12",
    "notifiedDate" : "2016-09-19T12:31:09Z"
  },
  // Only completed on first transaction in Financial Period
  "financialPeriods" :
  [
    {
      "financialPeriod" :
      {
        "startDate" : "2017-04-06",
        "endDate" : "2018-04-05",
      },
    },
  ],
  // Present only when subscribed in that FP
  "firstSubscribed" : "2017-07-12T11:30+01",
  "_links" :
  {
```

```
// link to collection of LISA transactions – with date ranges
"lisaTransactions" : {"href" :
  "/lisa/manager/Z9876543210/accounts/1234567890/transactions
  ?startDate=\"2017-04-06\"&endDate=\"2018-04-05\""}
}
},
{
  "financialPeriod" :
  {
    "startDate" : "2018-04-06",
    "endDate" : "2019-04-05",
  },

  // Present only when subscribed in that FP
  "firstSubscribed" : "2018-06-16T12:00Z",
  "_links" :
  {
    // link to collection of LISA transactions – with date ranges
    "lisaTransactions" : {"href" :
      "/lisa/manager/Z9876543210/accounts/1234567890/transactions
      ?startDate=\"06-04-2018\"&endDate=\"05-04-2019\""}
    }
  },
  ],
  "_links" :
  {
    "self" : {"href" : "/lisa/manager/Z987654321/accounts/1234567890"},
    "manager" : {"href" : "/lisa/manager/Z9876543210"},
    "investor" : {"href" : "/lisa/investor/8765432100"},

    // link to collection of all LISA transactions
    "lisaTransactions" : {"href" :
      "/lisa/manager/Z9876543210/accounts/1234567890/transactions"},

    // link to collection of all LISA transactions in date range
    "lisaTransactionsInPeriod" :
    {
      "href" : "/lisa/manager/Z9876543210/accounts/1234567890/transactions
      ?startDate={startDate}&endDate={endDate}"
    }
  }
}
}
```

Response Schema

```
{
  "schema": "http://json-schema.org/draft-04/schema#",
  "type": "object",
  "properties":
  {
    "accountID" : {"type" : "string"},
    "LISAManagerReferenceNumber" :
    {
      "$ref": "#/definitions/LISAManagerReferenceNumberType"
    }
  },
}
```

```
"investorID": {"$ref": "#/definitions/IDType"},
"status": {
  "type": "string",
  "enum": ["open", "closed", "transferred-out"]
},
"openDate": {"$ref": "#/definitions/ISO8601-Date"},
"closeDate": {"$ref": "#/definitions/ISO8601-Date"},

"healthStatus": {
  "type": "string",
  "enum": ["default", "dead", "terminally-ill"] },

"terminalIllnessNotification" :
{
  "type" : "object",
  "properties": {
    "notifiedDate" : {"$ref": "#/definitions/ISO8601-Timestamp"},
  },
  "required" : ["notifiedDate"]
},
"deathNotification" :
{
  "type" : "object",
  "properties":
  {
    "notifiedDate" : {"$ref": "#/definitions/ISO8601-Timestamp"},
    "DoD" : {"$ref": "#/definitions/ISO8601-Date"}
  },
  "additionalProperties": false,
  "required" : ["notifiedDate", "DoD"]
},

"financialPeriods" :
{
  "type" : "array",
  "minItems": 1,
  "uniqueItems": true,
  "items": {
    "type": "object",
    "properties":
    {
      "financialPeriod" : {"$ref": "#/definitions/financialPeriodType"},
      "firstSubscribed" : {"$ref": "#/definitions/ISO8601-Timestamp"},
      "_links" : {"type": "object"}
    },
    "required": ["financialPeriod", "_links"]
  }
},
"_links" : {
  "type" : "object"
}
},
"required": [
  "accountID",
  "LISAManagerReferenceNumber",
```

```
"investorID",
"status",
"openDate"
],
"additionalProperties": false,
"definitions":
{
  "ISO8601-Date" :
  {
    "type": "string",
    "pattern": "^\\d{4}-\\d{2}-\\d{2}$"
  },
  "ISO8601-Timestamp" :
  {
    "type" : "string",
    "pattern" : "\\d{4}-\\d{2}-\\d{2}T\\d{2}:\\d{2}:\\d{2}?((\\+|\\-|\\d{2}:\\d{2})|Z)"
  },
  "financialPeriodType" :
  {
    "type" : "object",
    "properties":
    {
      "startDate" : {"$ref": "#/definitions/ISO8601-Date"},
      "endDate" : {"$ref": "#/definitions/ISO8601-Date"},
    }
  },
  "IDType": {
    "type": "string",
    "pattern": "^\\d{10}$"},
  "LISAManagerReferenceNumberType" : {
    "type" : "string",
    "pattern": "^Z\\d{10}$"}
}
}
```

Withdrawn - do not use.

POST "/lisa/manager/{LISAManagerReferenceNumber}/accounts"

Description

Post to create an account with the accountID supplied by the calling LISAManager
Returns self URL in location HTTP header.

HTTP Response Codes

- 409 Conflict – Account already exists, use PUT to replace
- 403 Forbidden – invalid status: must create with open status
- 403 Forbidden – Investor not found (needs to be created first),
- 403 Forbidden – if the account is not for the calling LISAManager
- 201 Created

Example Request

```
{
  "accountID" : "1234567890",
  "LISAManagerReferenceNumber" : "Z9876543210",
  "investorID" : "8765432100",          // Relate to LISAINvestor

  "status" : "open",                    // type enum ["open", "closed", "transferred-out"],
  "openDate" : "2011-02-01",
  "closeDate" : "2015-12-13",          // (o) not present if open

  "healthStatus" : "default",           // Optional

  // There could be both of these records notified in the right order as per the example
  "terminallyIllnessNotification" : {   // Optional
    "notifiedDate" : "2016-08-07T09:15:35Z"
  },

  "deathNotification" : {              // Optional
    "DoD" : "2016-09-12",
    "notifiedDate" : "2016-09-19T12:31:09Z"
  }
}
```

Response Schema

```
{
  "$schema": "http://non-schema.org/draft-04/schema#",
  "type": "object",
  "properties": {
    "accountID": {"type": "string"},
    "LISAManagerReferenceNumber": {
      "$ref": "#/definitions/LISAManagerReferenceNumberType"},
    "investorID": {"$ref": "#/definitions/IDType"},
    "status": {
      "type": "string",
      "enum": ["open", "closed", "transferred-out"] },
    "openDate": {"$ref": "#/definitions/ISO8601-Date"},
    "closeDate": {"$ref": "#/definitions/ISO8601-Date"},

    "healthStatus" : {
      "type": "string",
      "enum": ["default", "dead", "terminally-ill"] },
  }
}
```



```

"terminalIllnessNotification" :
{
  "type" : "object",
  "properties": {
    "notifiedDate" : {"$ref": "#/definitions/ISO8601-Timestamp"},
  },
  "required" : ["notifiedDate"]
},
"deathNotification" :
{
  "type" : "object",
  "properties":
  {
    "notifiedDate" : {"$ref": "#/definitions/ISO8601-Timestamp"},
    "DoD" : {"$ref": "#/definitions/ISO8601-Date"},
  },
  "additionalProperties": false,
  "required" : ["notifiedDate", "DoD"]
},
},
"required": [
  "accountID",
  "LISAManagerReferenceNumber",
  "investorID",
  "status",
  "openDate"
],
"additionalProperties": false,
"definitions":
{
  "ISO8601-Date" :
  {
    "type": "string",
    "pattern": "^\\d{4}-\\d{2}-\\d{2}$"
  },
  "ISO8601-Timestamp" :
  {
    "type": "string",
    "pattern": "\\d{4}-\\d{2}-\\d{2}T\\d{2}:\\d{2}:\\d{2}\\.\\d{2}([+-]\\d{2}:\\d{2})?(Z)"
  },
  "IDType" :
  {
    "type": "string",
    "pattern": "^\\d{10}$",
    "LISAManagerReferenceNumberType" : {
      "type": "string",
      "pattern": "^Z\\d{10}$"
    }
  }
}

```

PUT "/lisa/manager/{LISAManagerReferenceNumber}/accounts/{accountID}"

Description

To update an existing LISAAccount to change status and set closeDate.

HTTP Response Codes

404 Not found – The LISAAccount resource does not exist

403 Forbidden - can't change accountID for account,
403 Forbidden - can't change investor for account,
403 Forbidden - invalid status change (eg transferred-out to open)
403 Forbidden - Account must already exist – Put is used for replacement
403 Forbidden – if the account is not for the calling LISAManager
201 Created

Example Request

```
{
  "accountID" : "1234567890",
  "LISAManagerReferenceNumber" : "Z9876543210",
  "investorID" : "8765432100",          // Relate to LISAINvestor

  "status" : "open",
  "openDate" : "2011-02-01",
  "closeDate" : "2015-12-13",          // Not present if status is not closed

  "healthStatus" : "default",          // Optional

  "terminallyIllnessNotification" :{    // Optional
    "notifiedDate" : "2016-08-07T09:15:35Z"
  },

  "deathNotification" :{               // Optional
    "DoD" : "2016-09-12",
    "notifiedDate" : "2016-09-19T12:31:09Z"
  }
}
```

Response Schema

```
{
  "$schema": "http://json-schema.org/draft-04/schema#",
  "type": "object",
  "properties":
  {
    "accountID" : {"type": "string"},
    "LISAManagerReferenceNumber" :{
      "$ref": "#/definitions/LISAManagerReferenceNumberType"},
    "investorID" : {"$ref": "#/definitions/IDType"},
    "status" :
      {"type": "string",
       "enum":["open", "closed", "transferred-out"] },
    "openDate" : {"$ref": "#/definitions/ISO8601-Date"},
    "closeDate" : {"$ref": "#/definitions/ISO8601-Date"},

    "healthStatus" : {
      "type": "string",
      "enum":["default", "dead", "terminally-ill"] },
    "terminallyIllnessNotification" :
    {
      "type" : "object",
      "properties": {
        "notifiedDate" : {"$ref": "#/definitions/ISO8601-Timestamp"},
      },
      "required" : ["notifiedDate"]
    }
  }
}
```

```
},
"deathNotification" :
{
  "type" : "object",
  "properties":
  {
    "notifiedDate" : {"$ref": "#/definitions/ISO8601-Timestamp"},
    "DoD" : {"$ref": "#/definitions/ISO8601-Date"},
  },
  "additionalProperties": false,
  "required" : ["notifiedDate", "DoD"]
}
},
"required": [
  "accountID",
  "LISAManagerReferenceNumber",
  "investorID",
  "status",
  "openDate"
],
"additionalProperties": false,
"definitions":
{
  "ISO8601-Date" :
  {
    "type": "string",
    "pattern": "^\\d{4}-\\d{2}-\\d{2}$"
  },
  "ISO8601-Timestamp" :
  {
    "type" : "string",
    "pattern" : "\\d{4}-\\d{2}-\\d{2}[T\\d{2}:\\d{2}:\\d{2}]?([+|-]\\d{2}:\\d{2})?(Z)"
  },
  "IDType": {
    "type": "string",
    "pattern": "^\\d{10}$"
  },
  "LISAManagerReferenceNumberType" : {
    "type" : "string",
    "pattern": "^Z\\d{10}$"
  }
}
}
```

DELETE not supported.

Account resources cannot be deleted.

LISATransaction

Description

The LISATransaction resource is designed to model the various transactions on a LISA account that HMRC has a business need to be informed of. Some "transactions" will need to be informed as they occur and some may be a aggregated summary of transactions. For example HMRC needs to know when the first deposit in the accounting period is made. This is because this is the action they starts a "subscription" to a LISA for the accounting period. The accounting period for a LISA is set at the HMRC financial year at present. The API has been designed so that an accounting period is modelled in data and not fixed as a Financial Year. This is to protect the API specification against changes in accounting periods.

The LISATransaction resource models six transaction types:

- deposit – Adding of funds to the LISA in whatever form
- withdrawal – Withdrawing of fund from a LISA (compliant or not)
- HTBtransfer – Transfer-in to a LISA of funds from a Help-to-Buy ISA
- LISAttransfer – Transfer-in to a LISA of all funds from another LISA
- bonusClaim – The request from a LISA provider for the HMRC bonus for a LISA account
- chargeMade – The informing of a charge made to a LISA account due to non-compliant action

Parts of the LISATransaction are only required only for particular "Transaction Types":

Content name	JSON type	Transaction Type
<i>transferFromLISA</i>	Object	<i>LISAttransfer</i>
<i>chargeDueTo</i>	Object	<i>chargeMade</i>
<i>complianceReason</i>	Property	<i>deposit or withdrawal</i>
<i>incurredCharge*</i>	Object	<i>deposit or withdrawal</i>

* refers to the *chargeMade* transaction due to the compliance reason on the *deposit or withdrawal*

The *supersedesTransaction* object is required for a transaction that supersedes a previous transaction to correct an error, making of a charge due to provided evidence or due to an outcome of an appeal or review.

It is likely that compliance failures can be detected at the point of recording the non-compliant transaction. However, if a non-compliance is detected after a transaction has been notified to HMRC then the original LISATransaction can be superseded. Similarly, if a non-compliance needs to be overturned, then again the original LISATransaction can be superseded.

GET `"/lisa/manager/{LISAManagerReferenceNumber}/accounts/{accountID}/transaction/{lisaTransactionID}"`

Description

Returns a single LISA transaction resource as a JSON object. See below for example and JSON schema.

HTTP Response Codes

404 – Not found

403 – Access Denied. The LISAAccount specified by the accountID in the URL does not belong to the calling LISAManager

200 – OK

Returns a LISATransaction resource as a JSON object.

GET "/lisa/manager/{LISAManagerReferenceNumber}/accounts/{accountID}/transactions"

Description

Returns a collection of LISATransaction resources for the specified account as a JSON array. The array will be empty if none are found. The request and response must support pagination.

HTTP Response Codes

404 – Not found – If the LISAManagerReferenceNumber or accountID fail to locate to their respective resources. Namely LISAManager and LISAAccount.

403 – Access Denied. The LISAAccount specified by the accountID in the URL does not belong to the calling LISAManager

200 – OK

Returns collection of LISATransaction resources as a JSON array. Will support a pagination pattern to make handling of a large number of transactions manageable and scalable.

**GET "/lisa/manager/{LISAManagerReferenceNumber}/accounts/{accountID}/transactions?
?startDate={startDate}&endDate={endDate}"**

**GET "/lisa/manager/{LISAManagerReferenceNumber}/accounts/{accountID}/transactions?
?startDate={startDate}&endDate={endDate}?transactionType={transactionType}"**

Description

Search for LISATransaction resources for a specific account, filtering by date range query parameters. Also supports an optional query term of transactionType. Returns a collection of LISATransaction resources for the specified account as a JSON array. The array will be empty if none are found.

HTTP Response Codes

404 – Not found – If the LISAManagerReferenceNumber or accountID fail to locate to their respective resources. Namely LISAManager and LISAAccount.

403 – Access Denied. The LISAAccount specified by the accountID in the URL does not belong to the calling LISAManager

200 - OK

Returns collection of LISATransaction resources as a JSON array. Will support a pagination pattern to make handling of a large number of transactions manageable and scalable.

Withdrawn - do not use

Example Response

```
{
  "lisaTransactionID" : "3333333333", // ID created by LISA Provider
  "accountID" : "1234567890",
  "LISAManagerReferenceNumber" : "Z9876543210",

  "transactionType" : "deposit",
  "complianceReason" : "chargeable", // Optional
  "dateSubmitted" : "2017-10-22T11:33Z", // type : "Timestamp"
  "financialPeriod" :
  {
    "startDate" : "2017-04-05",
    "endDate" : "2017-04-06",
  },
  "amount" : 123.45, // Units : Pound "type" : "number",

  "_links" :
  {
    "self" :
    {
      "href" : "/lisa/manager/Z876543210/accounts/1234567890/transactions/3333333333"
    },
    "investor" : {"href" : "/lisa/investor/8765432100"},
    "account" : {"href" : "/lisa/manager/Z876543210/accounts/1234567890"},
    "manager" : {"href" : "/lisa/manager/Z876543210"}
  },

  // A Maximum of one of the below will exist depending upon transaction type
  "transferFromLISA" : // (optional – present if transaction type = "LISAtransfer"
  {
    "LISAManagerReferenceNumber" : "Z9876543222",
    "accountID" : "1234567890",
    "transferDate" : "2012-12-22",
    "_links" :
    {
      "transferredFromManager" : {"href" :
        "/lisa/manager/Z876543222"},
      "transferredFromAccount" :
      {
        "href" : "/lisa/manager/Z876543222/accounts/1234567890"
      }
    }
  },

  // To associate a charge with this transaction
  // present if transaction type = "withdrawal" OR transactionType = "deposit" and
  // the complianceReason indicates a non-compliance.
  "incurredCharge" :
  {
    "chargeLISATransactionID" : "4444444444",
    "_links" :
    {
      "href" : "/lisa/manager/Z876543210/accounts/1234567890/transactions/4444444444"
    }
  },
}
```

```
// To associate a charge transaction to causing transaction
// present if transaction type = "ChargeMade"
"chargeDueTo" :
{
  "chargeReasonCode" : "over-lisa-limit",
  "chargeReasonText" : "More money credited to LISA that the yearly LISA limit allows",
  "causingLISATransactionID" : "4444444444",
  "_links" : {
    "href" : "/lisa/manager/Z876543210/accounts/1234567890/transactions/4444444444"
  }
},

// To correct a transaction create a new transaction and refer to the superseded transaction
"supersedesTransaction" :
{
  "supersedeReasonCode" : "error-correction",
  "supersedeReasonText" : "system error corrective transaction",
  "supersededLISATransactionID" : "5555555555",
  "_links" : {
    "href" : "/lisa/manager/Z876543210/accounts/1234567890/transactions/5555555555"
  }
}
}
```

Withdrawn - do not use

Response Schema

```
{
  "$schema": "http://json-schema.org/draft-04/schema#",
  "type": "object",
  "properties":
  {
    "lisaTransactionID" : {"$ref": "#/definitions/IDType"},
    "accountID" : {"$ref": "#/definitions/IDType"},
    "LISAManagerReferenceNumber" :
    {
      "$ref": "#/definitions/LISAManagerReferenceNumberType"
    },
    "complianceReason" : {"$ref": "#/definitions/complianceReasonType"},
    "transactionType" : {"$ref": "#/definitions/lisaTransactionTypeType"},
    "dateSubmitted" : {"$ref": "#/definitions/ISO8601-Timestamp"},
    "amount" : {"type": "number"},
    "financialPeriod" : {"$ref": "#/definitions/financialPeriodType"},

    // Transaction specific objects
    "chargeDueTo" :
    {
      "type" : "object",
      "properties":
      {
        "chargeReasonCode" : {"$ref": "#/definitions/chargeReasonCodeType"},
        "chargeReasonText" : {"type": "string"},
        "causingLISATransactionID" : {"$ref": "#/definitions/IDType"},
        "_links" : {"type": "object"}
      },
      "required":
      [
        "chargeReasonCode",
        "chargeReasonText",
        "causingLISATransactionID"
      ],
    },
    "transferFromISA" :
    {
      "type" : "object",
      "properties":
      {
        "LISAManagerReferenceNumber" :
        {
          "$ref": "#/definitions/LISAManagerReferenceNumberType"
        },
        "accountID" : {"$ref": "#/definitions/IDType"},
        "transferDate" : {"$ref": "#/definitions/ISO8601-Date"},
        "_links" : {"type": "object"}
      },
      "required":
      [
        "LISAManagerReferenceNumber", "accountID", "transferDate"
      ],
    },
  },
}
```



```
"incurredCharge" :
{
  "type" : "object",
  "properties":
  {
    "chargeLISATransactionID" : {"$ref": "#/definitions/IDType"},
    "_links" : {"type" : "object"}
  },
  "required":
  [
    "chargeLISATransactionID"
  ],
},
"supersedesTransaction" :
{
  "type" : "object",
  "properties":
  {
    "supersededLISATransactionID" : {"$ref": "#/definitions/IDType"},
    "supersedeReasonCode" : {"$ref":
      "#/definitions/supersedeReasonCodeType"},
    "supersedeReasonText" : {"type" : "string"},
    "_links" : {"type" : "object"}
  },
  "required":
  [
    "supersededLISATransactionID",
    "supersedeReasonCode",
    "supersedeReasonText"
  ],
},
  "_links" : {"type" : "object"}
},
"required": [
  "lisaTransactionID",
  "accountID",
  "LISAManagerReferenceNumber",
  "amount",
  "transactionType",
  "dateSubmitted",
  "financialPeriod"
],
"additionalProperties": false,
"definitions":
{
  "ISO8601-Date" :
  {
    "type": "string",
    "pattern": "^\\d{4}-\\d{2}-\\d{2}$"
  },
  "ISO8601-Timestamp" :
  {
    "type" : "string",
    "pattern" : "\\d{4}-\\d{2}-\\d{2}T\\d{2}:\\d{2}:\\d{2}?(\\d{2})?([+-]\\d{2}:\\d{2})?|Z)"
  }
}
```

Withdrawn - do not use.

```
},
"financialPeriodType" :
{
  "type" : "object",
  "properties":
  {
    "startDate" : {"$ref": "#/definitions/ISO8601-Date"},
    "endDate" : {"$ref": "#/definitions/ISO8601-Date"},
  }
},
"IDType": {
  "type": "string",
  "pattern": "^\\d{10}$"},
"LISAManagerReferenceNumberType" : {
  "type" : "string",
  "pattern": "^Z\\d{10}$"},
"transactionTypeType" : {
  "type" : "string",
  "enum": ["bonus", "charge"]},
"lisaTransactionTypeType" : {
  "type" : "string",
  "enum": ["deposit", "withdrawal", "HTBtransfer", "LISAtransfer",
    "bonusClaim", "chargeMade"]},
"complianceReasonType" : {
  "type" : "string",
  "enum": ["house-purchase", "over-sixty", "chargeable", "terminal-illness", "death"]},
"chargeReasonCodeType" : {
  "type" : "string",
  "enum": ["over-lisa-limit", "outside-age-range", "chargeable-withdrawal"]},
"supersedeReasonCodeType" : {
  "type" : "string",
  "enum": ["error-correction", "TBD"]}
}
}
```

Withdrawn, do not use.

POST "/lisa/manager/{LISAManagerReferenceNumber}/accounts/{accountID}/transactions"

Description

Create a LISATransaction resource. This endpoint does not support updating a LISATransaction. To correct a LISA transaction, it is necessary to create a superseding transaction.

HTTP Response Codes

201 – Resource created. The location header will return a link to the created resource.

403 – Forbidden

1. The LISAManager or the LISAAccount do not belong to the calling LISAManager
2. The content fails a compliance check rule on calculation of a charge.
3. The content fails a compliance check rule on calculation of a bonus.

409 – Conflict. Actual conflict is returned in the response body.

1. The resource already exists.

Example Request

// Example POST Request for LISATransaction resource creation

```
{
  "lisaTransactionID" : "3333333333", // ID created by LISA Provider
  "accountID" : "1234567890",
  "LISAManagerReferenceNumber" : "Z9876543210",

  "transactionType" : "deposit",
  "complianceReason" : "chargeable",
  "dateSubmitted" : "2017-09-23T13:29Z",
  "financialPeriod" :
  {
    "startDate" : "2017-04-06", // type : "Date",
    "endDate" : "2018-04-15", // type : "Date"
  },
  "amount" : 123.45, // Units : Pound "type" : "number",

  // A maximum of one of the below will exist depending upon transaction type
  "transferFromLISA" : // (optional - present if transaction type = "LISAtransfer"
  {
    "LISAManagerReferenceNumber" : "Z9876543222",
    "accountID" : "1234567890",
    "transferDate" : "2017-02-22",
  },

  // To associate a charge with this transaction
  // present if transaction type = "withdrawal" and is unauthorised OR
  // present if transactionType = "deposit" and breaks compliance
  "incurringCharge" :
  {
    "chargeLISATransactionID" : "7654479865",

    // To associate a charge transaction to causing transaction
    // present if transaction type = "ChargeMade"
    "chargeDueTo" :
    {
      "chargeReasonCode" : "over-lisa-limit",
      "chargeReasonText" : "More money credited to LISA than the yearly LISA limit allows",
      "causingLISATransactionID" : "4444444444",
    },
  },
}
```

```
// To associate a superseding transaction with superseded transaction
"supersedesTransaction" :
{
  "supersedeReasonCode" : "error-correction",
  "supersedeReasonText" : "system error corrective transaction",
  "supersededLISATransactionID" : "4444444444",
}
}
```

Request Schema

```
{
  // LISATransaction POST schema
  "$schema": "http://json-schema.org/draft-04/schema#",
  "type": "object",
  "properties":
  {
    "lisaTransactionID" : {"$ref": "#/definitions/IDType"},
    "accountID" : {"$ref": "#/definitions/IDType"},
    "LISAManagerReferenceNumber" :
    {
      "$ref": "#/definitions/LISAManagerReferenceNumberType"
    },
    "complianceReason" : {"$ref": "#/definitions/complianceReasonType"},
    "transactionType" : {"$ref": "#/definitions/lisaTransactionTypeType"},
    "dateSubmitted" : {"$ref": "#/definitions/ISO8601Timestamp"},
    "amount" : {"type": "number"},
    "financialPeriod" : {"$ref": "#/definitions/financialPeriodType"},

    // Transaction specific objects
    "chargeDueTo" :
    {
      "type" : "object",
      "properties":
      {
        "chargeReasonCode" : {"$ref": "#/definitions/chargeReasonCodeType"},
        "chargeReasonText" : {"type": "string"},
        "causingLISATransactionID" : {"$ref": "#/definitions/IDType"},
      },
      "required":
      [
        "chargeReasonCode",
        "chargeReasonText",
        "causingLISATransactionID"
      ],
    },

    "transferFromLISA" :
    {
      "type" : "object",
      "properties":
      {
        "LISAManagerReferenceNumber" :
        {

```

```
        "$ref": "#/definitions/LISAManagerReferenceNumberType"
      },
      "accountID" : {"$ref": "#/definitions/IDType"},
      "transferDate" : {"$ref": "#/definitions/ISO8601-Date"},
    },
    "required":
    [
      "LISAManagerReferenceNumber", "accountID", "transferDate"
    ],
  },
  "incurredCharge" :
  {
    "type" : "object",
    "properties":
    {
      "chargeLISATransactionID" : {"$ref": "#/definitions/IDType"},
    },
    "required":
    [
      "chargeLISATransactionID"
    ],
  },
  "supersedesTransaction" :
  {
    "type" : "object",
    "properties":
    {
      "supersededLISATransactionID" : {"$ref": "#/definitions/IDType"},
      "supersedeReasonCode" : {"$ref": "#/definitions/supersedeReasonCodeType"},
      "supersedeReasonText" : { "type" : "string"},
    },
    "required":
    [
      "supersededLISATransactionID",
      "supersedeReasonCode",
      "supersedeReasonText"
    ],
  },
},
"required" : [
  "LISATransactionID",
  "accountID",
  "LISAManagerReferenceNumber",
  "amount",
  "transactionType",
  "dateSubmitted",
  "financialPeriod"
],
"additionalProperties": false,
"definitions":
{
  "ISO8601-Date" : {
    "type": "string",
    "pattern": "^\\d{4}-\\d{2}-\\d{2}$"
```

```

},
"ISO8601-Timestamp" : {
  "type" : "string",
  "pattern" : "\\d{4}-\\d{2}-\\d{2}T\\d{2}:\\d{2}:\\d{2}?(\\[[+-]\\d{2}:\\d{2}?)|Z)"
},
"financialPeriodType" : {
  "type" : "object",
  "properties": {
    "startDate" : {"$ref": "#/definitions/ISO8601-Date"},
    "endDate" : {"$ref": "#/definitions/ISO8601-Date"},
  }
},
"IDType": {
  "type": "string",
  "pattern": "^\\d{10}$"
},
"LISAManagerReferenceNumberType" : {
  "type" : "string",
  "pattern": "^Z\\d{10}$"
},
"transactionTypeType" : {
  "type" : "string",
  "enum": ["bonus", "charge"],
  "lisaTransactionTypeType" : {
    "type" : "string",
    "enum": ["deposit", "withdrawal", "HTBtransfer", "LISAtransfer",
      "bonusClaim", "chargeMade"]
  }
},
"complianceReasonType" : {
  "type" : "string",
  "enum": ["house-purchase", "over-sixty", "chargeable", "terminal-illness", "death"]
},
"chargeReasonCodeType" : {
  "type" : "string",
  "enum": ["over-lisa-limit", "outside-age-range", "chargeable-withdrawal"]
},
"supersedeReasonCodeType" : {
  "type" : "string",
  "enum": ["error-correction", "TBD"]},
}
}

```

PUT & DELETE are not supported.

Transactions cannot be changed or deleted but they can be superseded by a new transaction.

HMRCPayment

Description

This resource represents a bulk payment of money from HMRC to a single LISAManager or vice-versa. It is created by HMRC at the end of an accounting period. It can be accessed by a LISAManager to determine what the allocation of funds from the payment should be (by inspecting the associated HMRCTransaction resources. This resource is expected to be created before any funds are transferred using BACS or Direct Debit. If the LISAManager has chosen to use BACS to make payments to HMRC then this resource can be used to determine the need for the payment and the amount of payment required. The associated HMRCTransaction resources will inform a LISAManager to which accounts the charges or bonuses are allocated.

GET "/lisa/manager/{LISAManagerReferenceNumber}/payments/{paymentReference}"

Description

Fetch an HMRCPayment resource by its paymentReference. This is useful for a LISAManager looking for an HMRCPayment resource by the paymentReference that they have found from a payment inbound or a Direct Debit payment outbound.

HTTP Response Codes

404 : not found,

403 : access denied – If attempting to access a payment not belonging to the calling LISAManager

200 : OK - Returns a single HMRCPayment resource in the response body. See below for an example resource and the JSON schema.

**GET "/lisa/manager/{LISAManagerReferenceNumber}/payments
?startDate={startDate}&endDate={endDate}"**

**GET "/lisa/manager/{LISAManagerReferenceNumber}/payments
?startDate={startDate}&endDate={endDate}&direction={direction}&status={status}"**

**GET "/lisa/manager/{LISAManagerReferenceNumber}/payments
?startDate={startDate}&endDate={endDate}&direction={direction}"**

**GET "/lisa/manager/{LISAManagerReferenceNumber}/payments
?startDate={startDate}&endDate={endDate}&status={status}"**

Description

Search for a set of HMRCPayment resources by a range of paymentDates.

An extra search parameter of payment direction and/or payment status may be used.

This is useful for a LISAManager looking at the end of an accounting period for an amount to pay by BACS or to know what payment to expect from HMRC.

HTTP Response Codes

403 : access denied – If attempting to access a payment not belonging to the calling LISAManager

200 : OK - Returns a JSON array of HMRCPayment resources in the response body.

See Below for an example of a single HMRCPayment resource and associated JSON schema.

PUT is not available

The resource is created by HMRC only.

DELETE is not supported

Example Response

```
{
  "LISAManagerReferenceNumber" : "Z9876543210",
  "paymentReference" : "2222222222",

  "method" : "directDebit",
  "direction" : "credit",           // With respect to LISAManager organisation
  "paymentDate" : "2017-12-19",
  "amount" : 12345.67,           // units : £ sterling

  // Pending or submitted – if we get supply that information on the BACS transaction
  "status" : "pending",           // type "enum" ["pending", "submitted", "completed"]

  "financialPeriod" :
  {
    "startDate" : "2017-04-06",    // type : "Date",
    "endDate" : "2018-04-15",    // type : "Date",
  },

  "_links" :
  {
    "self" : {"href" : "/lisa/manager/Z9876543210/payments/2222222222"},
    "investor" : {"href" : "/lisa/investors/8765432100"},
    "account" : {"href" : "/lisa/manager/Z9876543210/accounts/1234567890"},
    "manager" : {"href" : "/lisa/manager/Z9876543210"},

    // Returns collection of all hmrc-transactions for the payment
    "hmrc-transactions" : {"href" : "/lisa/payments/1234565432/hmrc-transactions"},
    "hmrc-transactions-by-paymentReference" :
    {
      "href" : "/lisa/manager/Z9876543210/hmrc-transactions
        ?paymentReference={paymentReference}"
    }
  }
}
```

Response Schema

```
{
  // HMRCPayment GET schema
  "$schema": "http://non-schema.org/draft-04/schema#",
  "type": "object",
  "properties":
  {
    "LISAManagerReferenceNumber" :
    {
      "$ref": "#/definitions/LISAManagerReferenceNumberType"
    },
    "paymentReference" : {"$ref": "#/definitions/IDType"},
    "method" : {"$ref": "#/definitions/paymentMethodType"},
    "direction" : {"$ref": "#/definitions/paymentDirectionType"},
    "paymentDate" : {"$ref": "#/definitions/ISO8601-Date"},
    "amount" : {"type": "number"},
    "status" : {"$ref": "#/definitions/paymentStatusType"},
    "financialPeriod" : {"$ref": "#/definitions/financialPeriodType"},
  }
}
```



```
"_links" : {"type" : "object" }
},
"required": [
  "LISAManagerReferenceNumber",
  "paymentReference",
  "method",
  "direction",
  "paymentDate",
  "amount",
  "financialPeriod"
],
"additionalProperties": false,
"definitions":
{
  "ISO8601-Date" :
  {
    "type": "string",
    "pattern": "^\\d{4}-\\d{2}-\\d{2}$"
  },
  "ISO8601-Timestamp" :
  {
    "type" : "string",
    "pattern" : "\\d{4}-\\d{2}-\\d{2}T\\d{2}:\\d{2}:(\\d{2})?(([+-]\\d{2}:(\\d{2})?)|Z)"
  },
  "financialPeriodType" :
  {
    "type" : "object",
    "properties":
    {
      "startDate" : {"$ref": "#/definitions/ISO8601-Date"},
      "endDate" : {"$ref": "#/definitions/ISO8601-Date"},
    }
  },
  "IDType": {
    "type": "string",
    "pattern": "^\\d{10}$"
  }
  "LISAManagerReferenceNumberType" : {
    "type" : "string",
    "pattern": "\\d{10}$",
  }
  "paymentMethodType" : {
    "type" : "string",
    "enum": ["directDebit", "BACS"]},
  "paymentDirectionType" : {
    "type" : "string",
    "enum": ["credit", "debit"]},
  "paymentStatusType" : {
    "type" : "string",
    "enum": ["pending", "submitted", "completed"]},
}
}
```

Withdrawn - do not use.

HMRCTransaction

Description

GET `"/lisa/manager/{LISAManagerReferenceNumber}/hmrc-transactions/{hmrcTransactionID}"`

Description

To get an individual HMRC Transaction by hmrcTransactionID.

HTTP response codes

404 : not found – if the requested resource does not exist

403 : access denied – if the HMRCTransaction is not for the calling LISAManager

200 : OK – A single HMRCTransaction resource is returned in the response body. See below for example and schema.

GET

`"/lisa/manager/{LISAManagerReferenceNumber}/hmrc-transactions?paymentReference={paymentReference}"`

Description

To search for HMRCTransaction resources by paymentReference.

HTTP response codes

404 : not found – if the requested resource does not exist

403 : access denied – if the HMRCTransaction is not for the calling LISAManager

200 : OK - Returns an array of HMRCTransaction resources in the response body.

See Below for an example of a single HMRCTransaction resource and associates JSON schema.

GET `"/lisa/manager/{LISAManagerReferenceNumber}/hmrc-transactions?`

`&startDate={startDate}&endDate={endDate}`

HTTP response codes

404 : not found – if the requested resource does not exist

403 : access denied – if the HMRCTransaction is not for the calling LISAManager

200 : OK - Returns an array of HMRCTransaction resources in the response body.

See Below for an example of a single HMRCTransaction resource and associates JSON schema.

Withdrawn - do not use

Example Response

```
{
  "hmrcTransactionID" : "1111111111",
  "accountID" : "1234567890",
  "LISAManagerReferenceNumber" : "Z9876543210",
  "paymentReference" : "1234565432",

  "transactionType" : "bonus",           // type : "enum" ["bonus", "charge"]
  "transactionTimestamp" : "2017-06-19T11:55Z", // Set by POST if not supplied
  "amount" : 2345.67,                   // type : number units : £ sterling

  // For aggregated amounts only – Not present for individual transaction
  "applicablePeriod" :
  {
    "startDate" : "2017-06-06",
    "endDate" : "2017-07-05",
  },

  "_links" :
  {
    "self" : {"href" : "/lisa/manager/Z9876543210/hmrc-transactions/1111111111"},
    "investor" : {"href" : "/lisa/investors/87654321"},
    "account" : {"href" : "/lisa/manager/Z9876543210/accounts/1234567890"},
    "manager" : {"href" : "/lisa/manager/Z9876543210"},
    "payment" : {"href" : "/lisa/manager/Z9876543210/payments/1234565432"}
  }
}
```

Withdrawn - do not use.

Response Schema

```
{
  "$schema": "http://json-schema.org/draft-04/schema#",
  "type": "object",
  "properties": {
    {
      "hmrcTransactionID" : {"$ref": "#/definitions/IDType"},
      "accountID" : {"$ref": "#/definitions/IDType"},
      "paymentReference" : {"$ref": "#/definitions/IDType"},
      "transactionType" : {"$ref": "#/definitions/transactionTypeType"},
      "transactionTimestamp" : {"$ref": "#/definitions/ISO8601-Timestamp"},
      "LISAManagerReferenceNumber" :
      {
        "$ref": "#/definitions/LISAManagerReferenceNumberType"
      },
      "amount" : {"type": "number"},

      "applicablePeriod" :
      {
        "type" : "object",
        "properties" :
        {
          "startDate" : {"$ref": "#/definitions/ISO8601-Date"},
          "endDate" : {"$ref": "#/definitions/ISO8601-Date"}
        }
      },
      "_links" : {"type" : "object"}
    },
    "required": [
      "hmrcTransactionID",
      "accountID",
      "LISAManagerReferenceNumber",
      "paymentReference",
      "amount",
      "transactionType",
      "applicablePeriod"
    ],
    "additionalProperties": false,
    "definitions": {
      {
        "ISO8601-Date":
        {
          "type": "string",
          "pattern": "^\\d{4}-\\d{2}-\\d{2}$"
        },
        "ISO8601-Timestamp":
        {
          "type" : "string",
          "pattern" : "\\d{4}-\\d{2}-\\d{2}T\\d{2}:\\d{2}:\\d{2}\\.\\d{2}([+-]\\d{2}:\\d{2})?|Z)"
        },
        "financialPeriodType" :
        {
          "type" : "object",
          "properties":
          {

```

```
    "startDate" : {"$ref": "#/definitions/ISO8601-Date"},
    "endDate" : {"$ref": "#/definitions/ISO8601-Date"},
  }
},
"IDType": {
  "type": "string",
  "pattern": "^\\d{10}$"},
"LISAManagerReferenceNumberType" : {
  "type" : "string",
  "pattern": "^Z\\d{10}$"},
"transactionTypeType" : {
  "type" : "string",
  "enum": ["bonus", "charge"]},
}
}
```

PUT/POST is not available

The resource is created by HMRC only.

DELETE is not supported

Withdrawn - do not use.