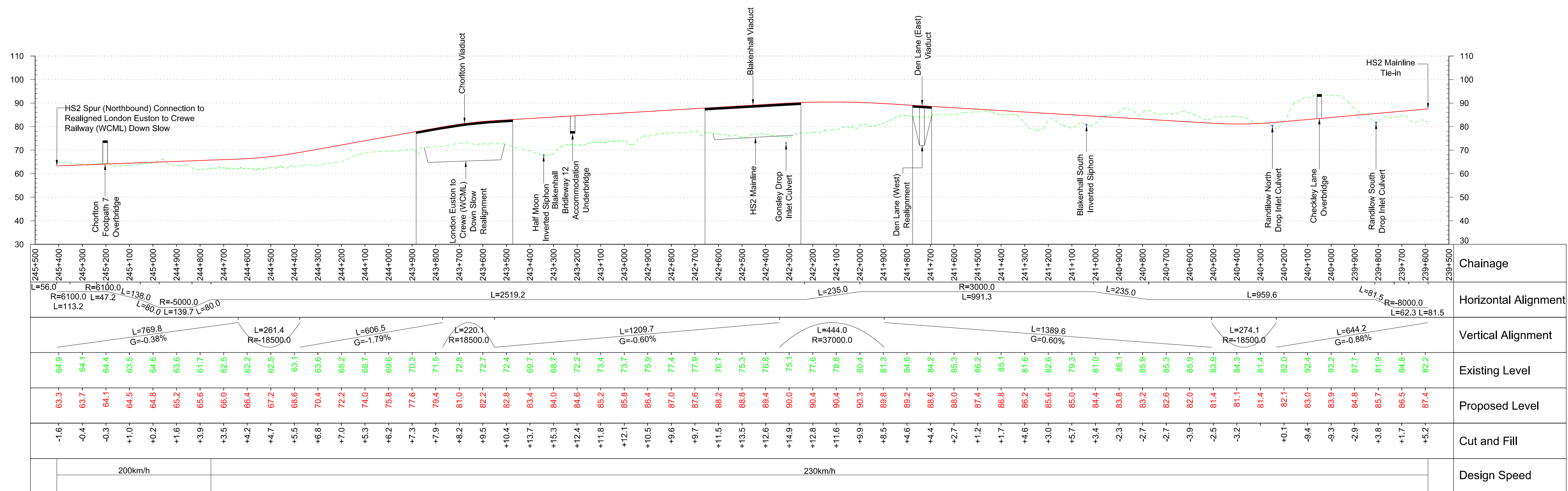
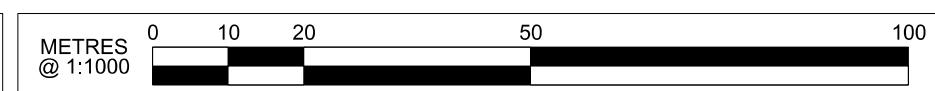
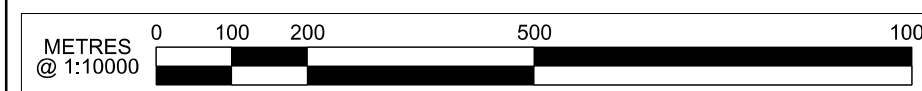


HS2 Spur (Southbound)



HS2 Spur (Northbound)



Profile
Scale H:1:10,000 V:1:1000 @ A1

Fit for Acceptance

P02	CP1+++ Issue Draft Initial Preliminary Design	JH	SAO	DE	
P01	CP1+++ Issue Draft Initial Preliminary Design	JH	SAO	DE	
Rev	Description	Drawn	Checked	Con App	HS2 App

HS2 accepts no responsibility for any circumstances which arise from the reproduction of this document after alteration, amendment or abbreviation or if it is issued in part or issued incompletely in any way.

© Crown Copyright and database right 2016. All rights reserved. Ordnance Survey Licence number 100049190

© Crown Copyright material is reproduced with the permission of Land Registry under delegated authority from the Controller of HMSO. This material was last updated on 2016 and may not be copied, distributed, sold or published without the formal permission of Land Registry. Only an official copy of a title plan or register obtained from the Land Registry may be used for legal or other official purposes.

Scale with caution as distortion can occur.

Legends/Notes:

Depot, station, headhouse or portal building	Replacement floodplain storage	Public realm	New, diverted or realigned PRoW
Electricity substation	Woodland habitat creation	Engineering earthworks	Stopped-up PRoW
Land drainage area	Wetland habitat creation	Landscape earthworks	Tunnels external extent
Ecological mitigation pond	Grassland habitat creation	Rail alignment formation	Rail alignment
Balancing pond	Landscape mitigation planting (scrub / woodland)	Returned to suitable development use	HS2 Access road
	Grassed areas	County boundary	Noise fence barrier
	Sustainable placement	Borough / District boundary	
	Community forum boundary	Hedgerow habitat creation	
	Watercourse diversion	Main utility works	
	Existing watercourse	Existing public right of way (PRoW)	
	Ditches - new		

Registered in England
Registration No. 06791686
Registered office:
One Canada Square,
London, E14 5AB

Creator/Organiser
Ove Arup & Partners International Ltd

Zone	Route Wide		
Design Stage	Hybrid Bill - Draft Initial Preliminary Design		
Drawing Title	Main Line Sheet 11 of 11		
Project/Contract	P2A Civils Design & Environmental Services		
Discipline/Function	Civil		
Drawn	Checked	Approved	
GLW	SAO	DE	
Date	Scale	Size	
24/08/2016	AS SHOWN	A1	
Drawing No.	Rev.		
C861-ARP-CV-DPP-000-012011	P02		