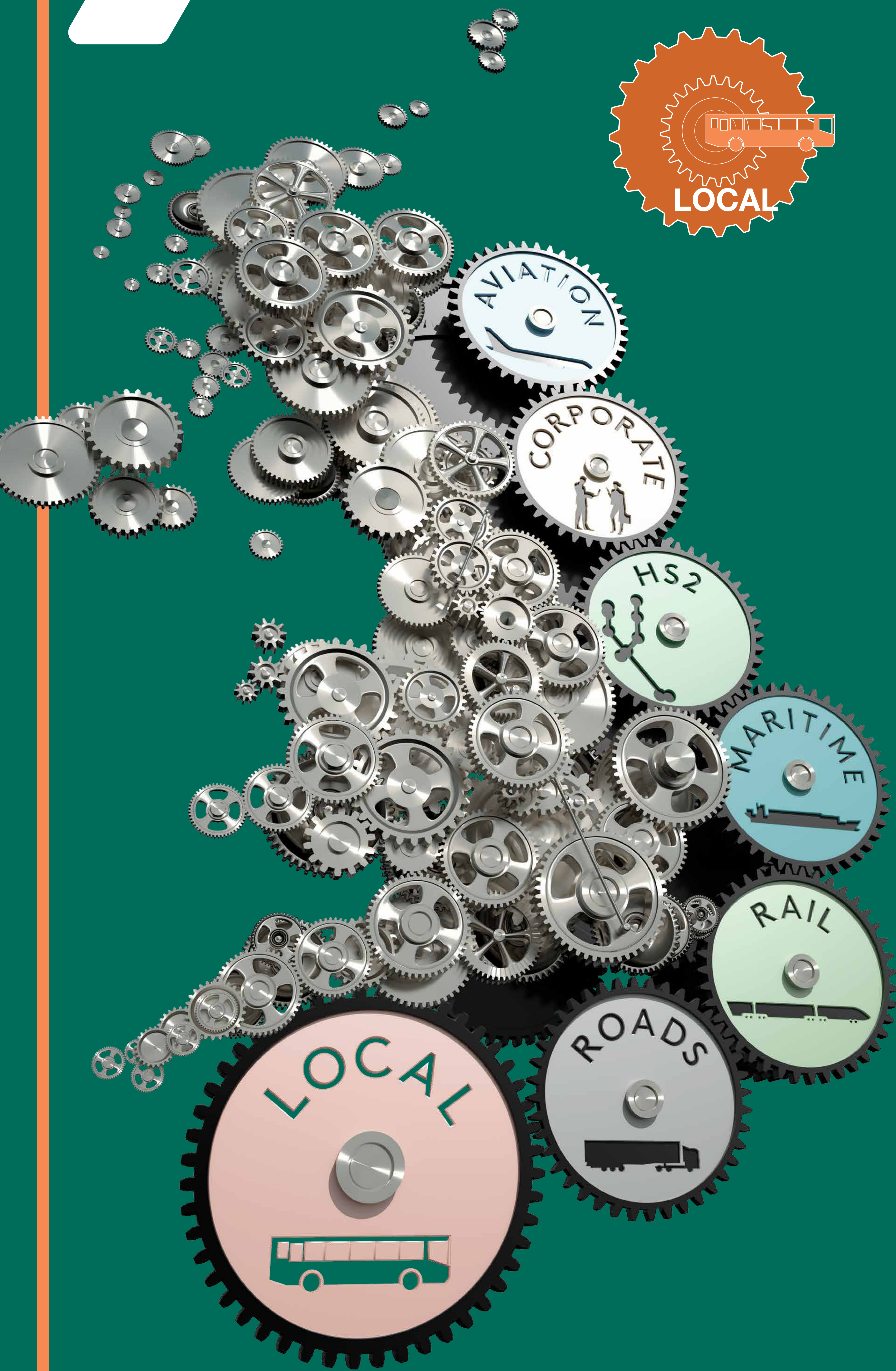


# Moving Britain Ahead



- Invested £374m to get more people cycling and ease congestion and improve health. Built and improved over 700 miles of cycle paths and walkways, provided cycle training to over 1m school children via Bikeability, and helped over 23,000 people dust off and fix up their bikes. The amount of free cycling parking at stations has doubled since 2010.

- Local growth deals – £3bn of funding to deliver over 300 new transport schemes. By investing in roads, local rail, tram, walking and cycling routes, we are enabling people and products to get to their destination faster, and facilitating the building of new homes, shopping centres and places of work.
- Funded £1.8bn programme of 56 local major transport projects, e.g. the new Mersey Gateway Bridge, helping businesses to transport products more quickly, reduce traffic jams, and open up new routes to work and market.
- £600m via the Local Sustainable Transport Fund is supporting economic growth by getting people to work, shops and local amenities whilst encouraging low carbon travel choices. It funded 96 schemes from 77 local authorities up to 2014/15.
- Helped maintain local roads, with £4.7bn of capital funding to 118 councils across England – including a £168m Pothole Fund announced in June 2014.
- Devolved some £42m a year of Bus Service Operators Grant to local councils outside London to give them more say over which bus routes should be run to serve local communities in their area.
- City deals agreed in Manchester (up to £900m), Cambridge (up to £500m) and Leeds (£420m) with significant transport investment to support cities in their aim to deliver economic growth and provide jobs and housing for local people.
- Congestion relief through £259m for 110 “pinch point” schemes to address bottlenecks on local roads (and which lever in a further £210m of third party, including LA, funding).
- Better bus areas – £78m to help 25 English local authorities improve bus services in partnership with bus operators.
- Approved funding of over £3.1bn of Private Finance Initiative (PFI) projects: three local highways maintenance projects in Sheffield, Hounslow and Isle of Wight; 6 street lighting projects, all now in operation; and an extension to the Nottingham Express Transit light rail system.



Department  
for Transport