



15 September 2014

Year: 2014 Week: 37

## In This Issue:

- Key Messages.
- Weekly summary.
- Total contacts.
- Syndromic indicators.
- Notes and caveats.
- Further information.
- Acknowledgements.

## Syndromic indicators at a glance:

Number of contacts and percentage of Read coded contacts.

## 1: Total out-of-hours contacts:

Daily total number of out-of-hours and unscheduled contacts and 7 day average (adjusted for bank holidays).

## Key messages

Data to: 14 September 2014

There were further small increases in respiratory contacts during week 37 (figures 2,4,5), particularly in difficulty breathing/wheeze/asthma in children (figure 5a) in line with seasonally expected levels.

There has also been an increase in vomiting consultations, particularly in infants (figures 10, 10a)

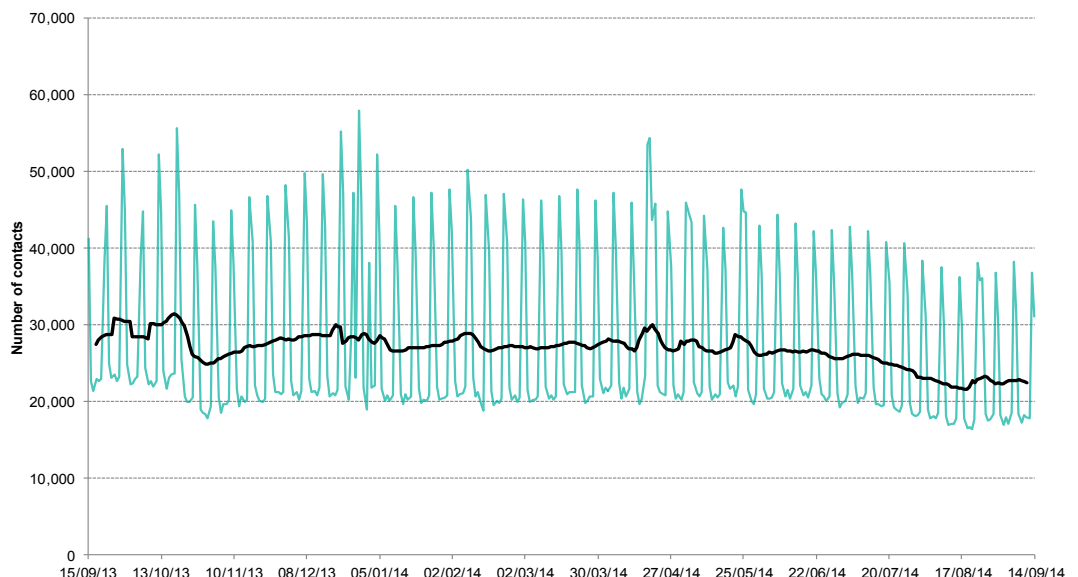
A Heat-Health Watch system operates in England from 1 June to 15 September each year. As part of the Heatwave Plan for England, the PHE Real-time Syndromic Surveillance team will be routinely monitoring the public health impact of hot weather using syndromic surveillance system during this period.

Heat-health watch level (current reporting week): level 1 **Summer preparedness**

<http://www.metoffice.gov.uk/weather/uk/heathealth/>

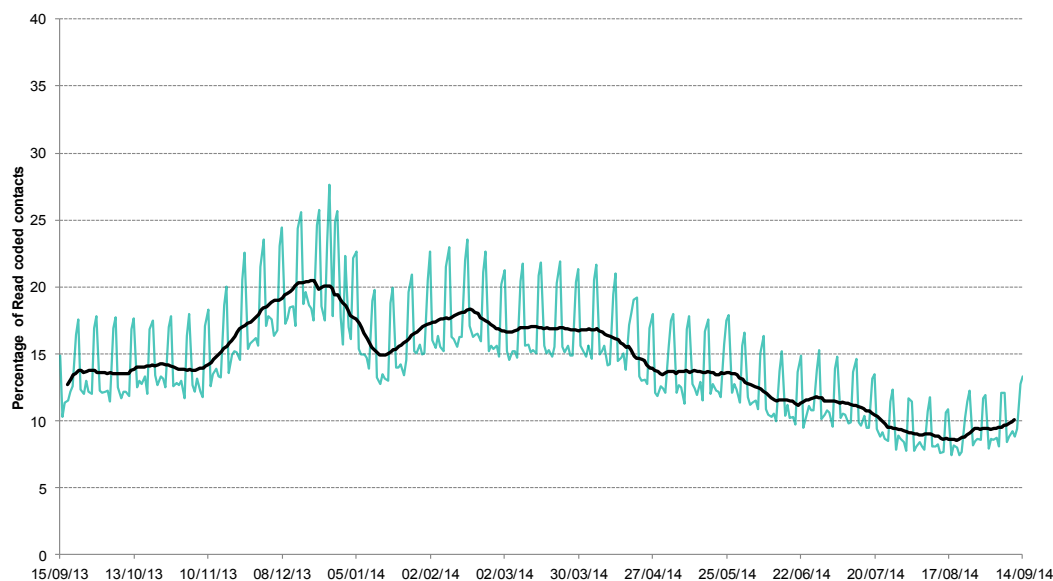
Key indicator	No. of contacts	% Week 37	% Week 36	Trend*
All OOH contacts, all causes	157,038			
Acute respiratory infection	8,840	10.88	10.24	↑
Influenza-like illness	95	0.12	0.12	↔
Bronchitis/bronchiolitis	128	0.16	0.10	↑
Difficulty breathing/wheeze/asthma	1,772	2.18	2.06	↑
Gastroenteritis	3,973	4.89	4.80	↔
Diarrhoea	1,052	1.29	1.26	↔
Vomiting	1,403	1.73	1.64	↔
Myocardial infarction	848	1.04	1.05	↔
Pharyngitis	64	0.08	0.08	↔
Heatstroke	1	0.00	0.00	↔

\*Trend: reports on the trend seen over previous weeks in the percentage of Read coded contacts.



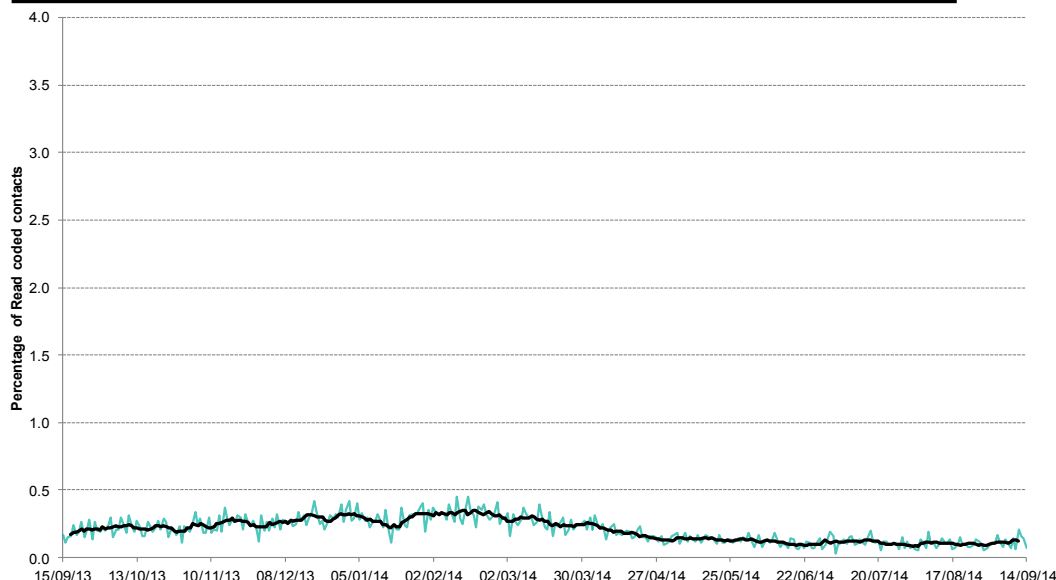
**2: Acute Respiratory Infection daily contacts.**

Shown as a percentage of the total contacts with a Read code and as a 7 day average\*.



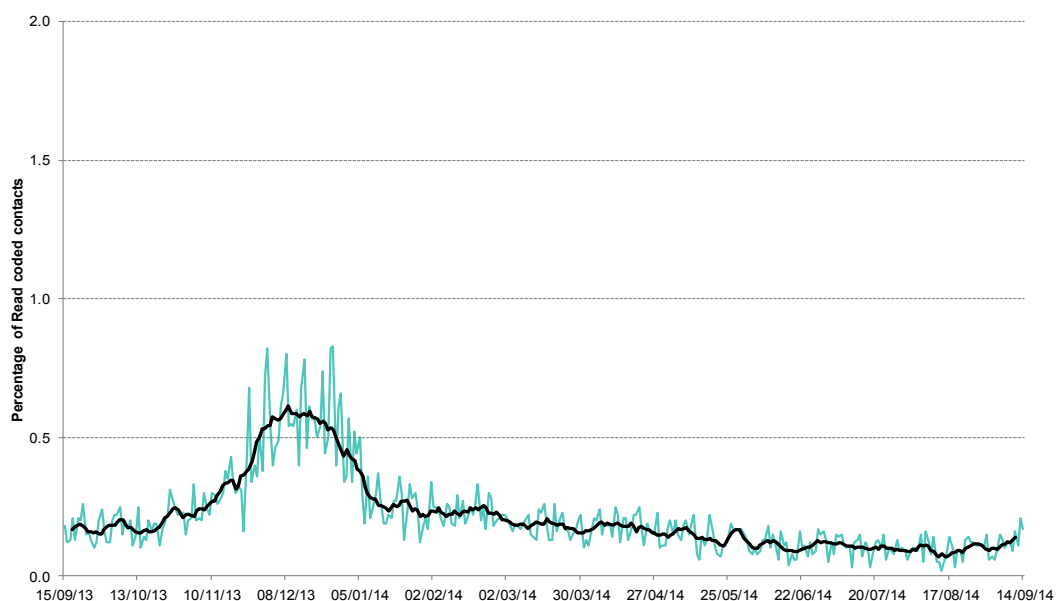
**3: Influenza-like illness daily contacts.**

Shown as a percentage of the total contacts with a Read code and as a 7 day average\*.



**4: Bronchitis/ bronchiolitis daily contacts.**

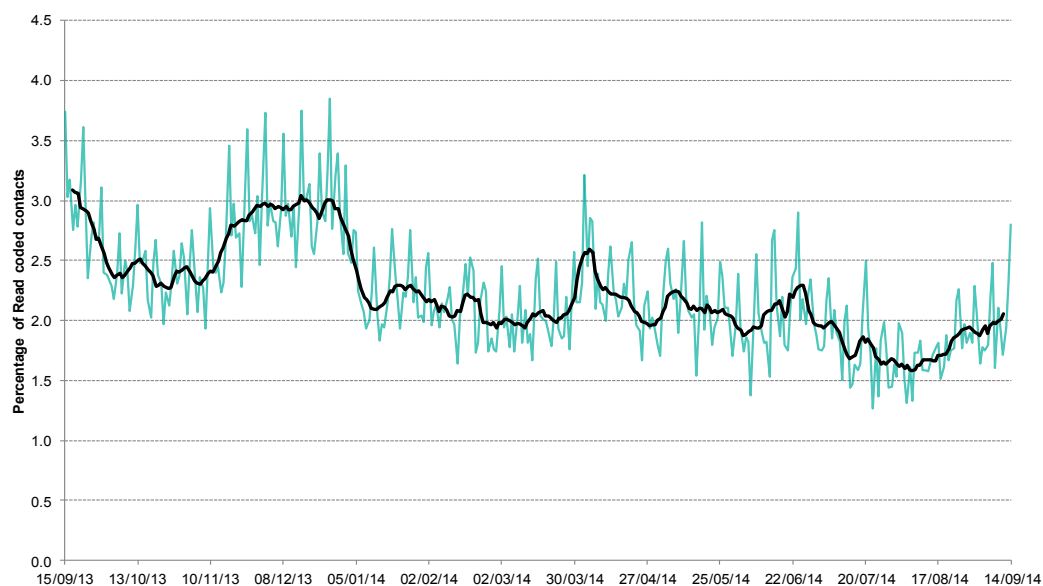
Shown as a percentage of the total contacts with a Read code and as a 7 day average\*.



\*7-day moving average adjusted for bank holidays.

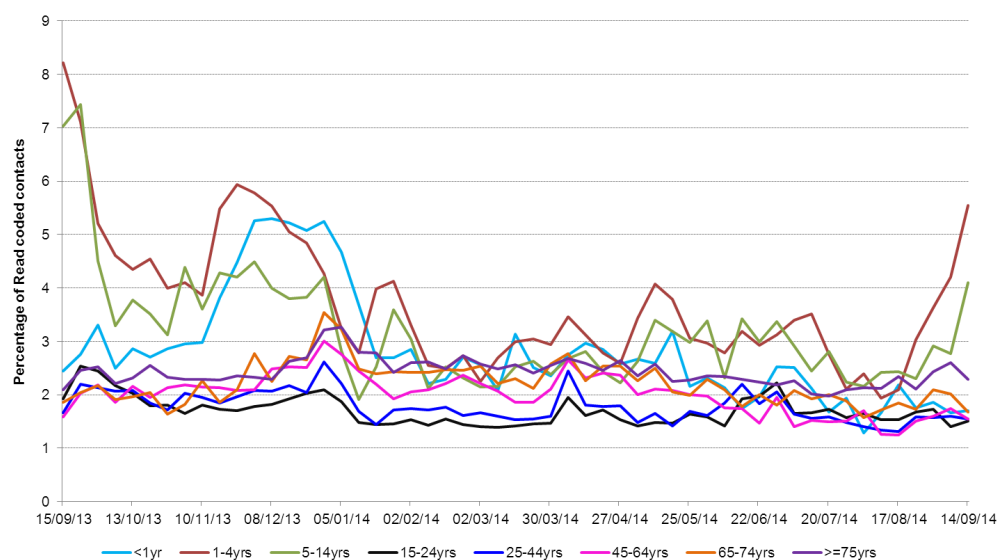
**5: Difficulty breathing/  
wheeze/asthma daily  
contacts.**

Shown as a percentage of the total contacts with a Read code and as a 7 day average\*.



**5a: Difficulty  
breathing/wheeze/  
asthma daily  
contacts by age  
group.**

Shown as a percentage of the total contacts with a Read code and as a 7 day average\*.



**6: Deliberately left  
blank.**

\*7-day moving average  
adjusted for bank  
holidays.

**7: Deliberately left blank**

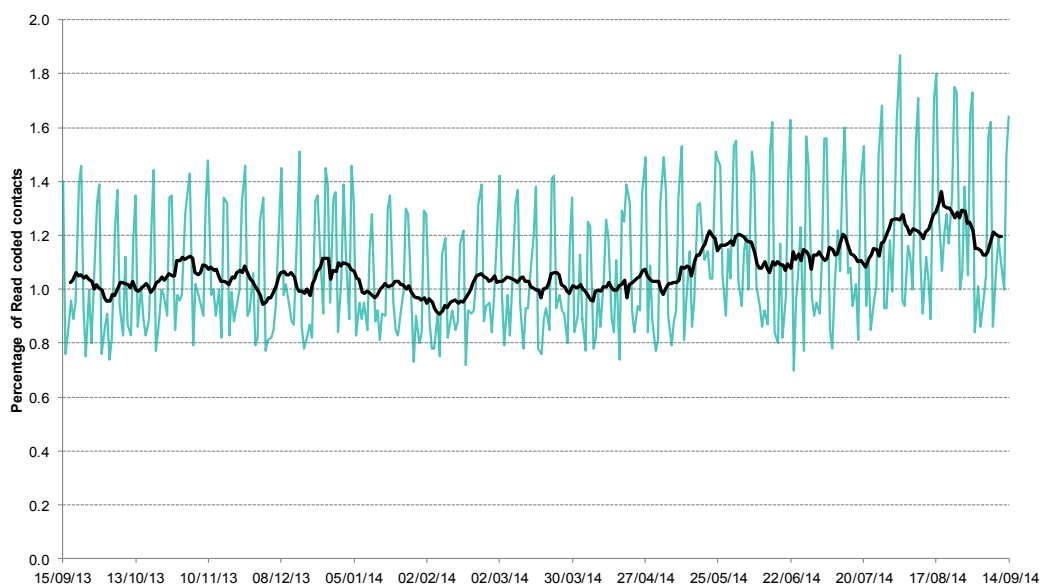
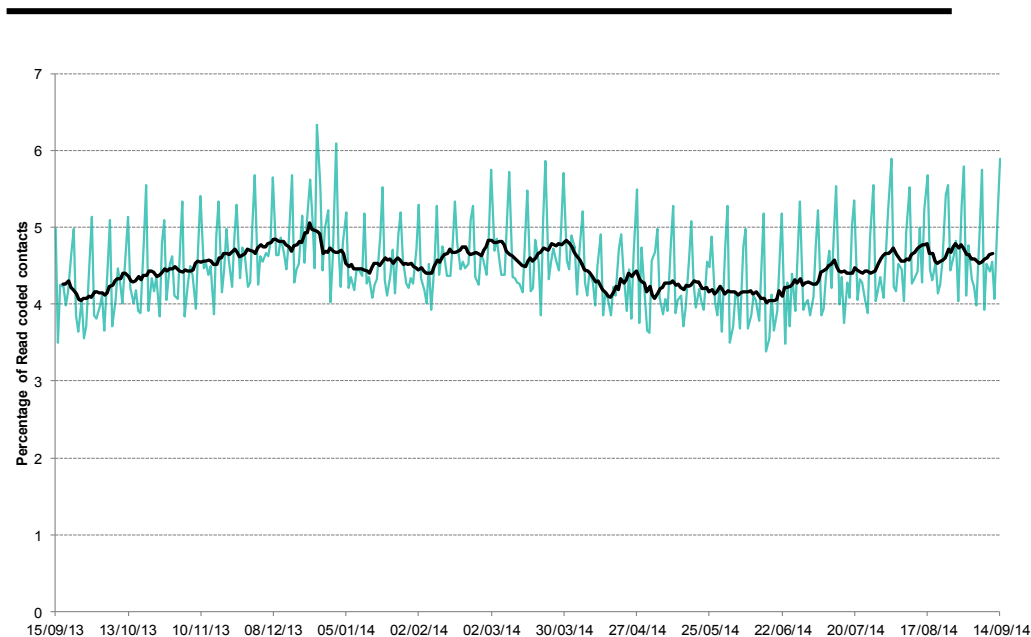
**8: Gastroenteritis daily contacts.**

Shown as a percentage of the total contacts with a Read code and as a 7 day average\*.

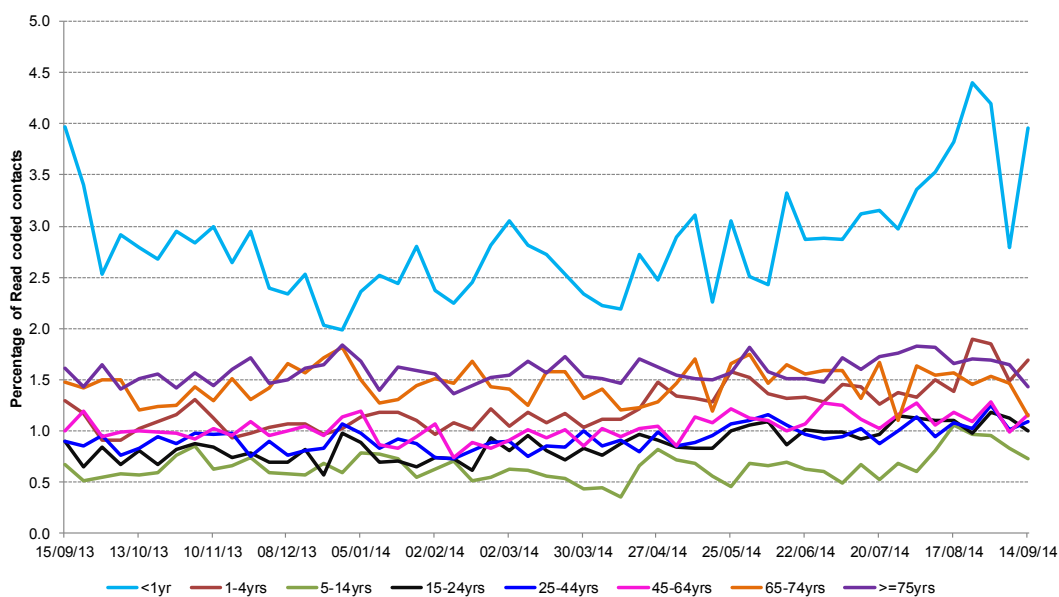
**9: Diarrhoea daily contacts.**

Shown as a percentage of the total contacts with a Read code and as a 7 day average\*.

\*7-day moving average adjusted for bank holidays.

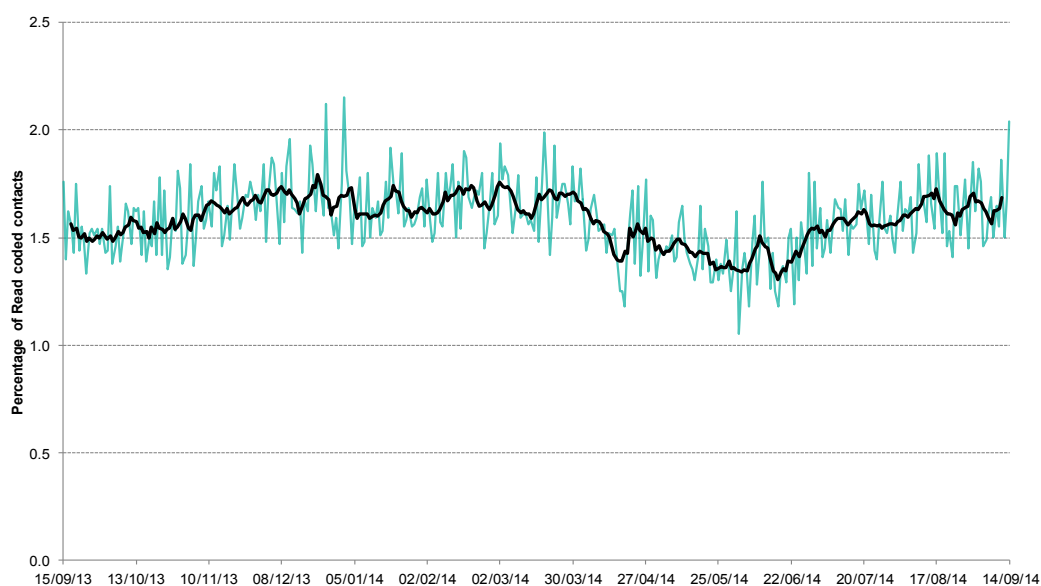


**9a: Diarrhoea weekly contacts by age group.**



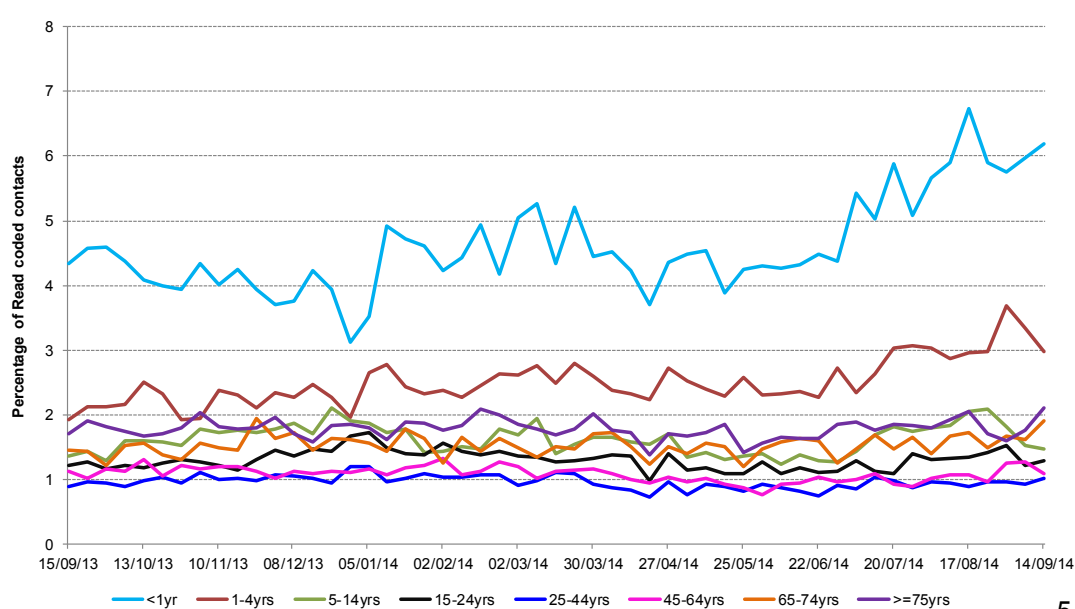
**10: Vomiting daily contacts.**

Shown as a percentage of the total contacts with a Read code and as a 7 day average\*.



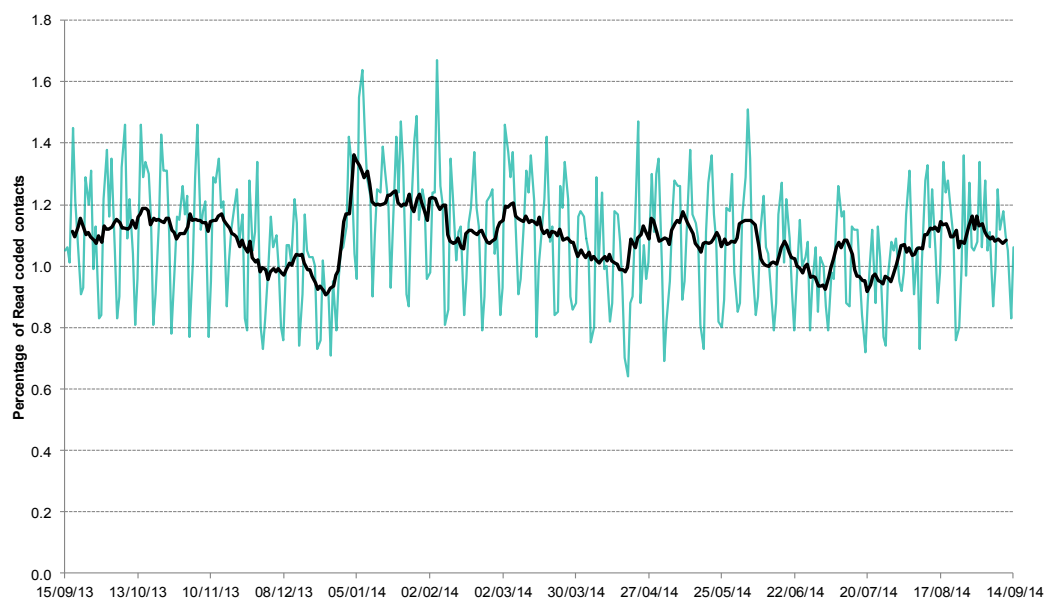
**10a: Vomiting weekly contacts by age group.**

\*7-day moving average adjusted for bank holidays.



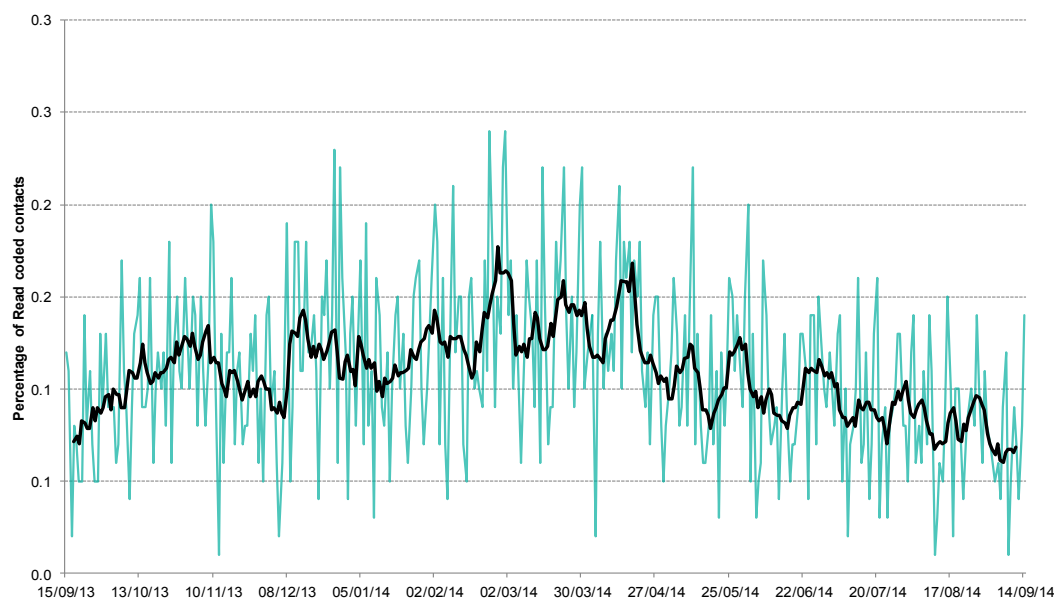
**11: Myocardial  
Infarction daily  
contacts.**

Shown as a percentage of the total contacts with a Read code and as a 7 day average\*.



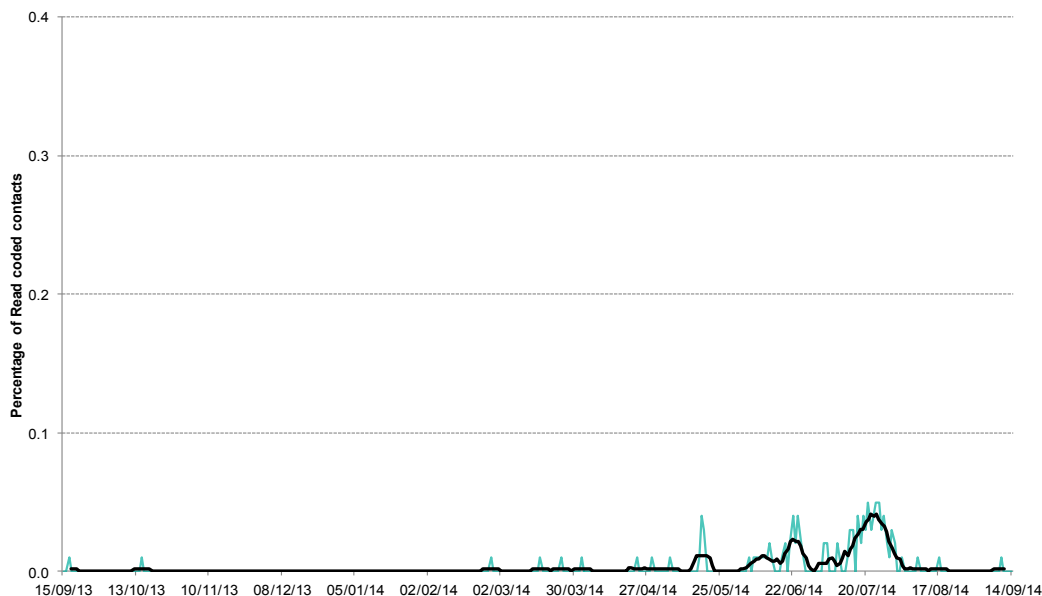
**12: Acute pharyngitis  
and persistent sore  
throat.**

Shown as a percentage of the total contacts with a Read code and as a 7 day average\*.



**13: Heatstroke and  
sunstroke.**

Shown as a percentage of the total contacts with a Read code and as a 7 day average\*.



\*7-day moving average  
adjusted for bank  
holidays.

15 September 2014

Year: 2014 Week: 37

## Notes and caveats:

- This bulletin presents data from the Public Health England (PHE) GP Out-of-hours\Unscheduled Care Surveillance System (GP OOHSS).
- Fully anonymised data from GP out-of-hours (OOH) and unscheduled care service providers in England are being transferred to the PHE for analysis and interpretation by the PHE Real-time Syndromic Surveillance Team (ReSST).
- This new system supplements existing PHE syndromic surveillance systems by monitoring data on general practitioner consultations outside of routine surgery opening times (evenings, weekends and bank holidays) and unplanned contacts within NHS primary care.
- The key indicators presented within this bulletin are derived by grouping selected Read coded consultations.

## Further information:

---

The GP Out-of-Hours Surveillance System Bulletin can also be downloaded from the PHE Real-time Syndromic Surveillance website which also contains more information about syndromic surveillance:

<https://www.gov.uk/government/collections/syndromic-surveillance-systems-and-analyses>

## Acknowledgements:

---

We are grateful to Advanced Health and Care and the GP out-of-hours and unscheduled care service providers who have kindly agreed to participate in this system.

---

### PHE Out-of-Hours/Unscheduled Care Surveillance

**Produced by:** PHE Real-time Syndromic Surveillance Team  
6<sup>th</sup> Floor, 5 St Philip's Place, Birmingham, B3 2PW

**Tel:** 0344 225 3560 > Option 4 > Option 2

**Fax:** 0121 236 2215

**Web:** <https://www.gov.uk/government/collections/syndromic-surveillance-systems-and-analyses>

## Contact ReSST:

[syndromic-surveillance](https://www.gov.uk/government/collections/syndromic-surveillance)  
[@phe.gov.uk](mailto:resst@phe.gov.uk)