

Department for Environment, Food and Rural Affairs

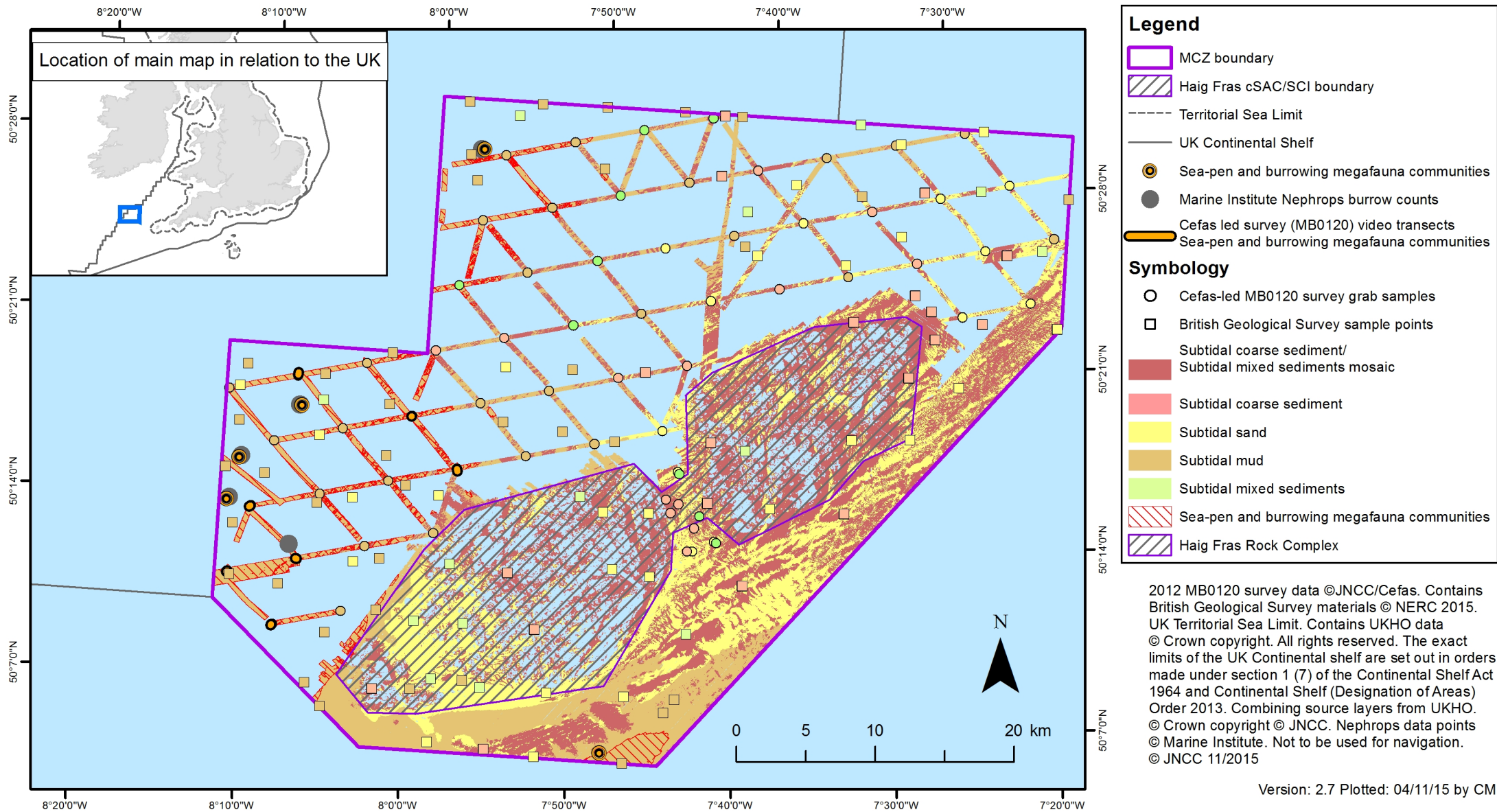
Greater Haig Fras MCZ

Feature Map

17 January 2016

The following map shows where the features protected by this Marine Conservation Zone (MCZ) are located. A range of different types of surveys have been used to create this map. More detailed information on the techniques used and the features themselves can be found here: <http://jncc.defra.gov.uk/page-6658>

Greater Haig Fras MCZ



Sea-pen and burrowing megafauna communities data points and Nephrops burrow counts were taken by the Marine Institute Nephrops surveys in 2012-2014. The Cefas led survey video transects were taken during the Cefas survey in 2012 and the grab samples were taken during the 2012 and 2014 survey. The British Geological Survey PSA data were downloaded from http://mapapps2.bgs.ac.uk/geoindex_offshore/home.html and translated into EUNIS. The presence and extent of the Haig Fras Rock Complex is supported by the full coverage of acoustic data and visual verification from video and still images, and is identical to the extent of Haig Fras cSAC/SCI. The habitat map is produced using acoustic data from four surveys in 2011, 2012 and 2014, and ground-truthing data from surveys in 2011 and 2012. The map provides 50% coverage with the polygons in the north-eastern area appearing as lines. More detailed advice available from the JNCC advice documents found here: <http://jncc.defra.gov.uk/page-6658>



© Crown copyright 2016

You may re-use this information (excluding logos) free of charge in any format or medium, under the terms of the Open Government Licence v.3. To view this licence visit www.nationalarchives.gov.uk/doc/open-government-licence/version/3/ or email PSI@nationalarchives.gsi.gov.uk

This publication is available at www.gov.uk/government/publications

Any enquiries regarding this publication should be sent to us at

mcz@defra.gsi.gov.uk

PB 14408