



**Radioactive Waste
Management**

Building partnerships

Natalyn Ala
GDF Siting Director

Why act now?

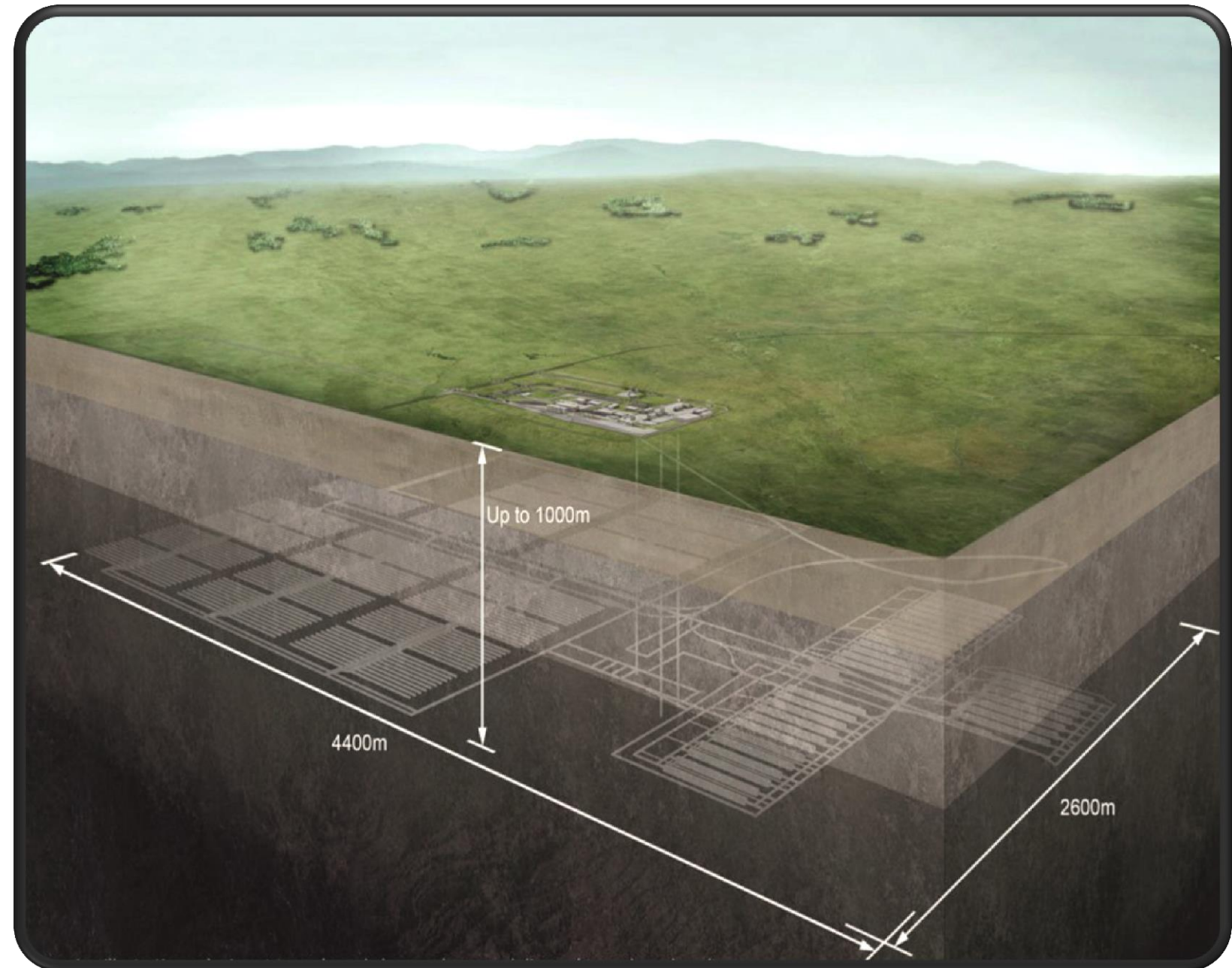
UK has been a “nuclear nation” since the late 1940s

- used to light and heat our homes, and power our industry
- used in medicine, industry, research and defence
- higher activity waste (HAW) inventory ~ 650,000 m³
- some waste will be hazardous for 100s of 1,000s of years
- safely stored in interim surface storage up to 100 years, but requires long-term safe disposal



What is required for Geological Disposal?

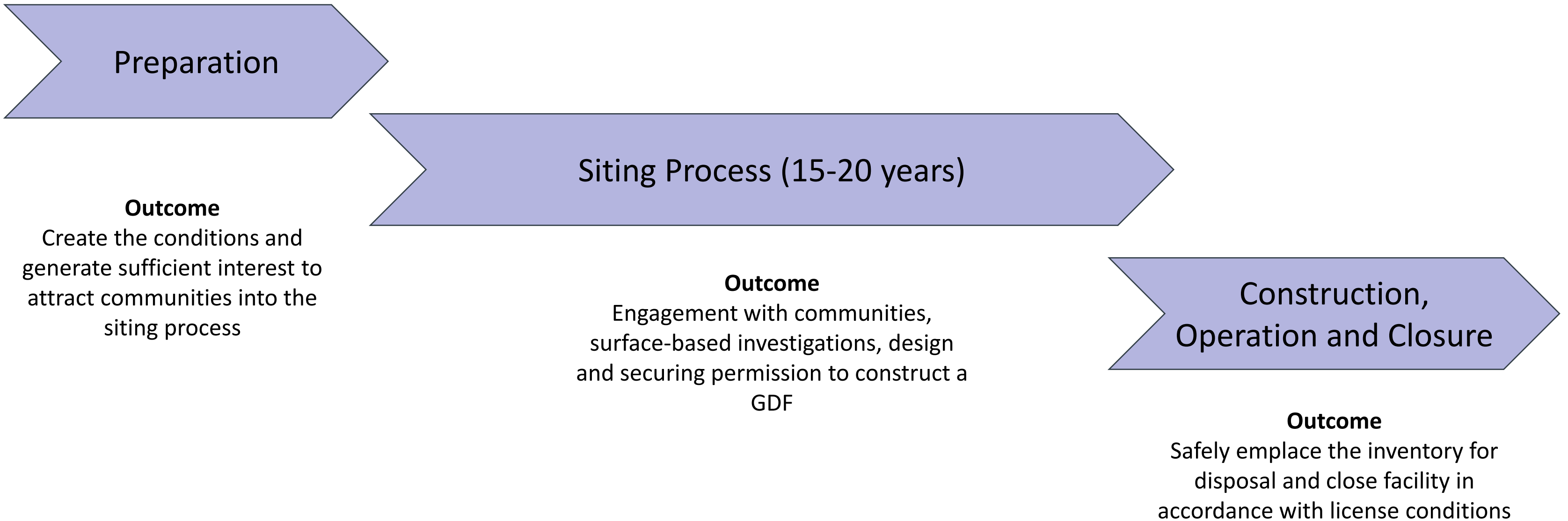
- design – in accordance with a robust safety case
- waste packaged for disposal
- a suitable site with a willing community



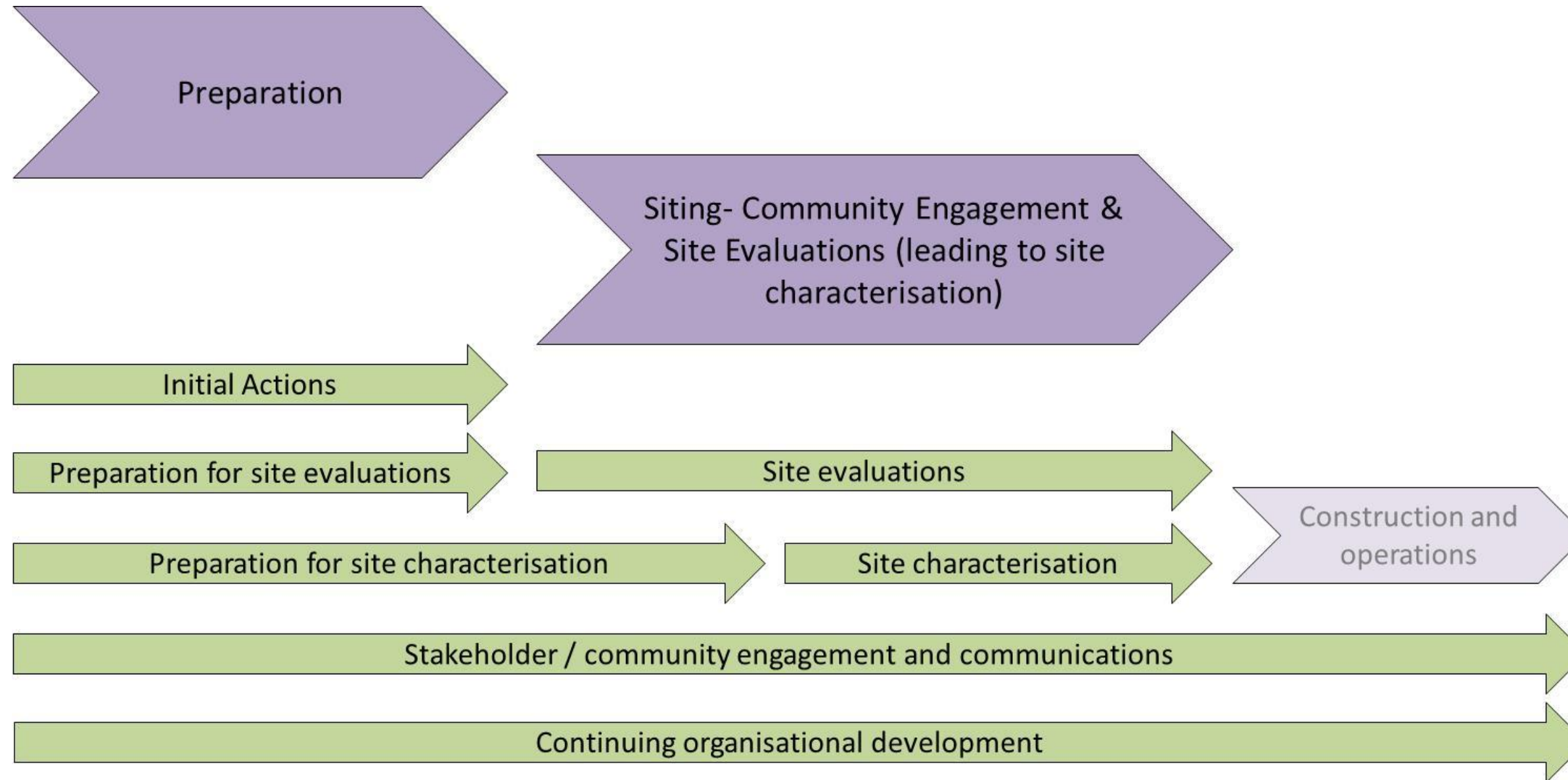
Principles - people and place

- **Safety** – safety, security and protection of people and the environment are pre-requisites and underpin all stages of the process
- **Partnership working** – we will work in partnership with a willing community, this means:
 - a collaborative and transparent approach with effective communications
 - Working towards a development within the community which is to the overall benefit and well-being of the community
- **Flexible process** – a flexible process to accommodate the needs of different communities and to facilitate robust decision-making

Delivering geological disposal

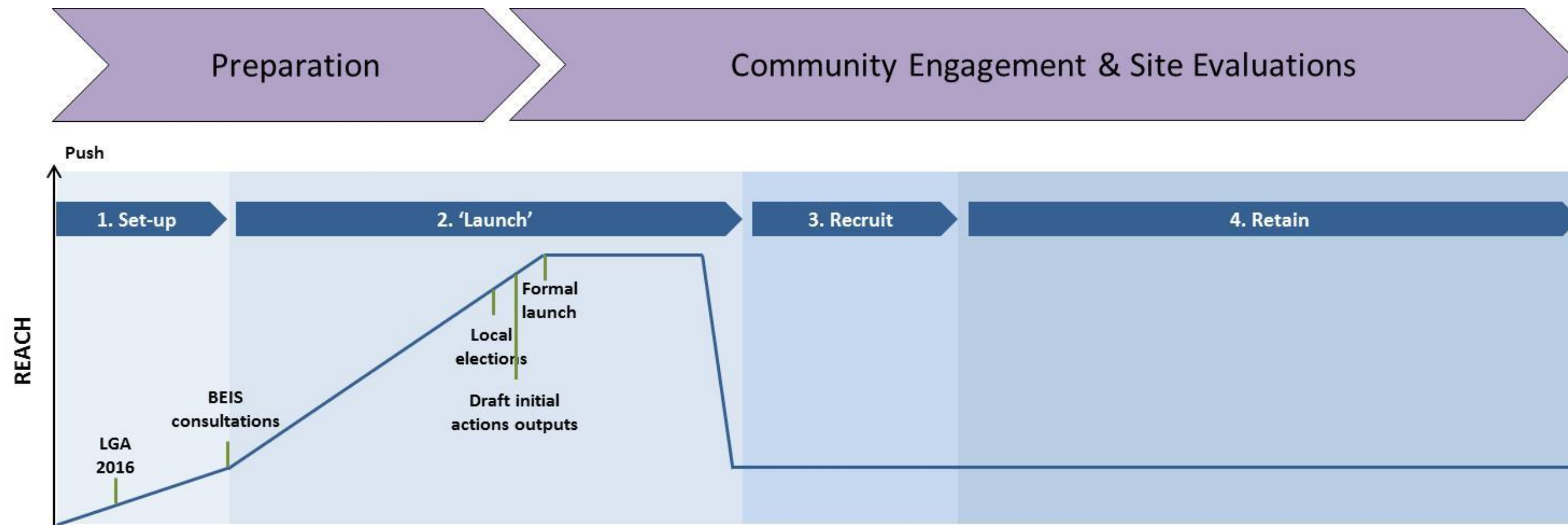


The next few years



Engagement and communications

Creating the right environment for geological disposal



We began with awareness raising, as we move into the siting process our attention will focus on those communities that express interest in geological disposal.

Working with communities

Finding a site where we can build and operate it safely

- Working together
- Trust and partnerships
- Creating the future

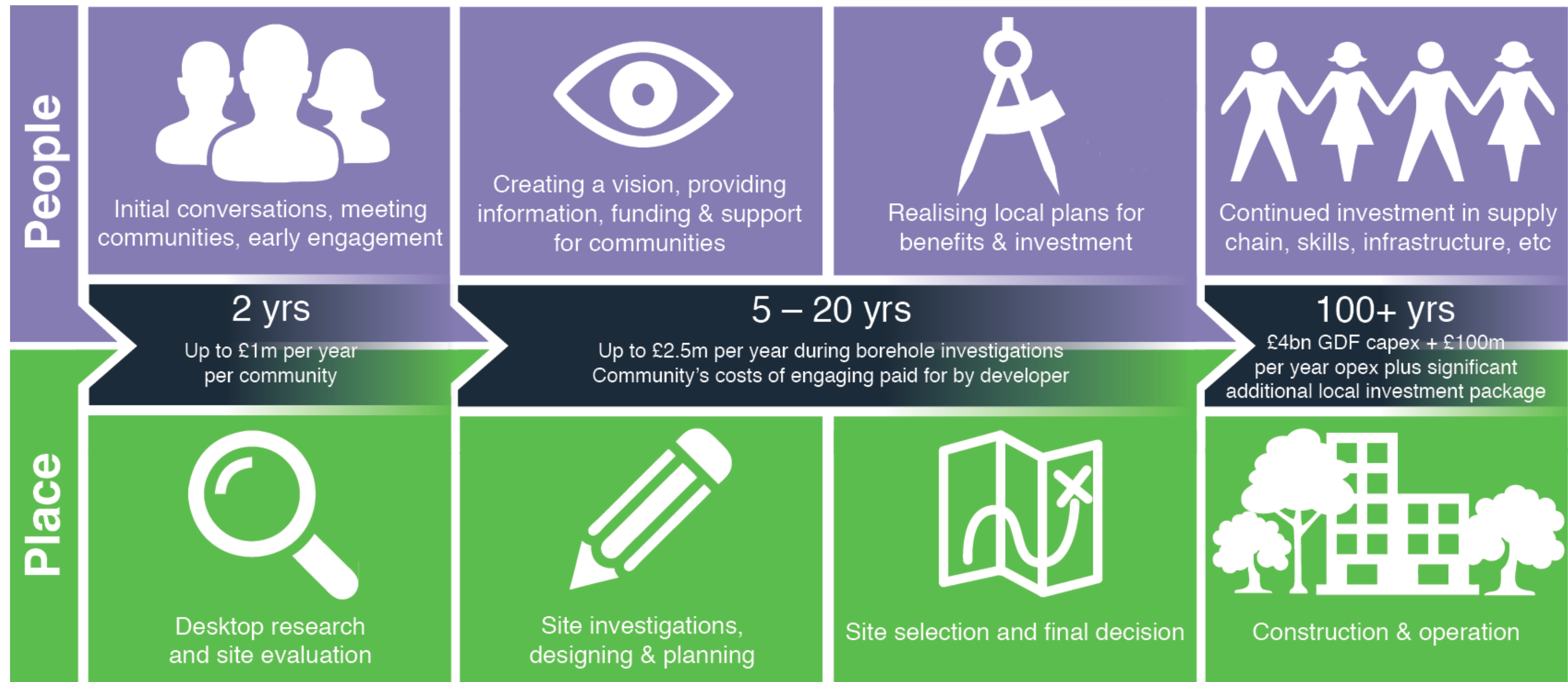


Working together

Trust and partnerships

Creating the future

Working in partnership with communities



Economic benefits



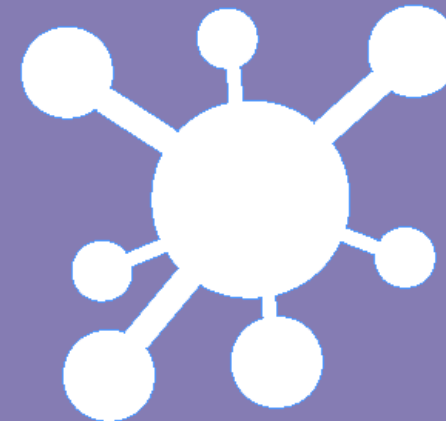
Average 600 skilled & well paid jobs per year for 100+ years



Peak of 1,000 direct jobs during construction phase



Supply chain opportunities and cluster development



New facilities for business, transport infrastructure and services



Investment in local training and skills – apprenticeships and graduates

What happens next?

- Initial Actions
 - National Land-use Planning
 - National Geological Screening
 - Working with Communities
- Preparation for launch of the siting process
- Siting process launch

