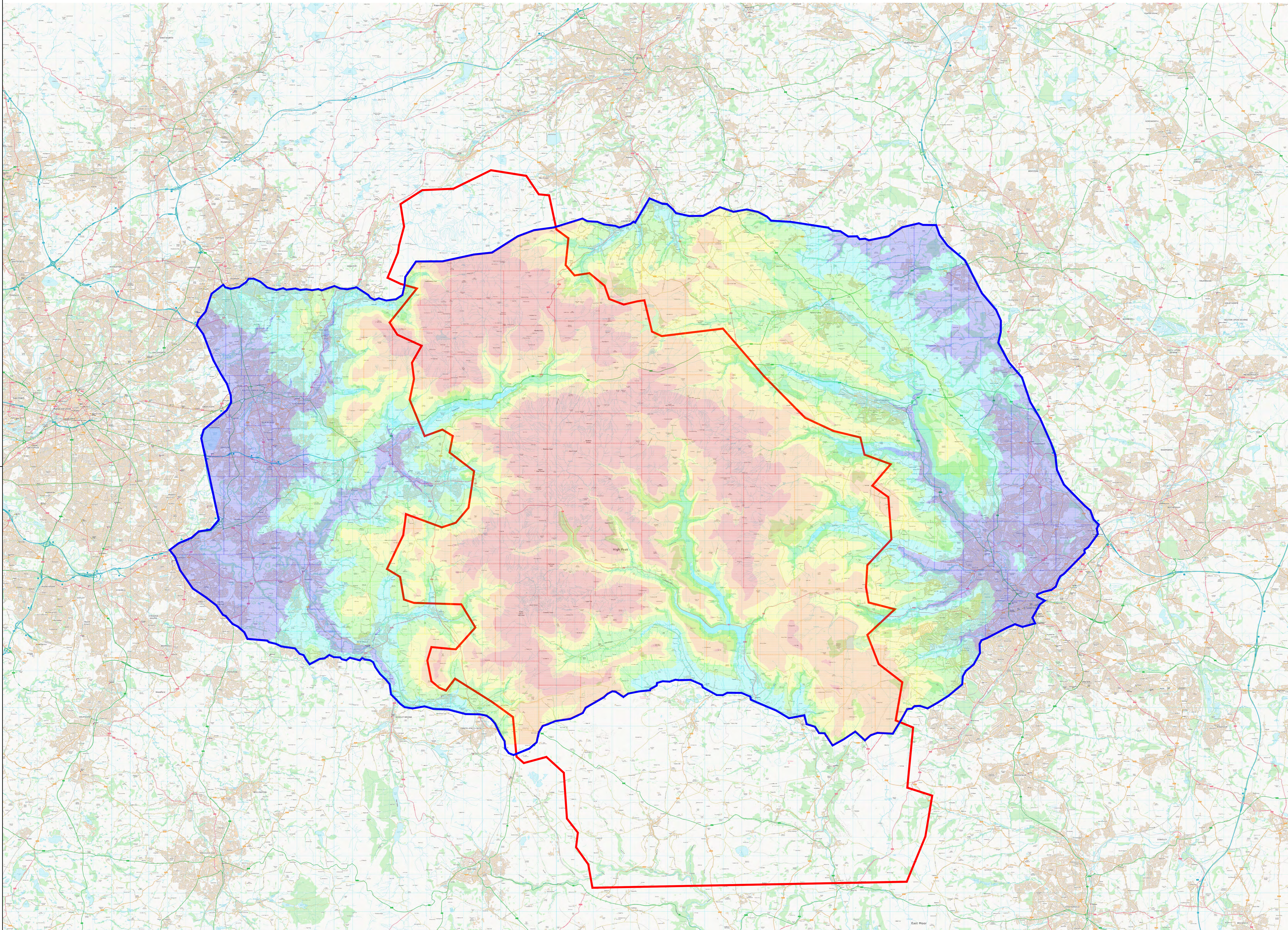


This drawing was generated on computer and must not be manually updated. No copies, physically or electronically, may be made of the information or any part of the information contained in this plan without the permission of Highways England.

Key			
Height (m)			
32.1 - 146		276 - 347	
146 - 210		347 - 436	
210 - 276		436 - 636	
Boundary			
Study Area			



Rev	By	Checked	Approved	Date	
P1	MW	BJ	AC	15/12/15	
Rev	Amendment			Date	
Drawn	MW	Checked	BJ	Approved	AC
Date	DEC 15	Date	DEC 15	Date	DEC 15

ARCADIS Design & Consultancy for natural and built assets

mouchel building great relationships

St. Johns House, Queen Street
Manchester, M2 5JB
Tel: 0161 832 4542
Fax: 0161 835 2038

Client **highways england**

Issued only for purpose Indicated
Issue-Purpose

Project **Trans Pennine Tunnel**

Title **Highway Topography**

Project	PC1 0016	Originator	MOU	Volume	GEN
Location	TPTS	Type	D DR	Role	0003
Scale	NTS	Job No.	1069519	Issue:	Number
Sheet No.					P1