



14 October 2014

Year: 2014 Week: 41

In This Issue:

- Key messages.
- Syndromic indicators at a glance.
- Data summary.
- Indicators by syndrome.
- Cold/flu.
- Fever.
- Cough.
- Difficulty Breathing.
- Diarrhoea.
- Vomiting.
- Eye problems.
- Introduction to charts.
- Notes and further information.
- Acknowledgements.

Key messages

Data to: 12 October 2014

NHS 111 calls for cough continued to increase during week 41 in line with seasonally expected levels (figure 4).

Vomiting calls in children aged less than 5 are increasing and are at levels higher than recorded last year (figure 7a).

Syndromic indicators at a glance:

Indicator	Current trend
Cold/flu	Increasing
Fever	No trend
Cough	Increasing
Difficulty breathing	No trend
Diarrhoea	Increasing
Vomiting	Increasing
Eye problems	No trend

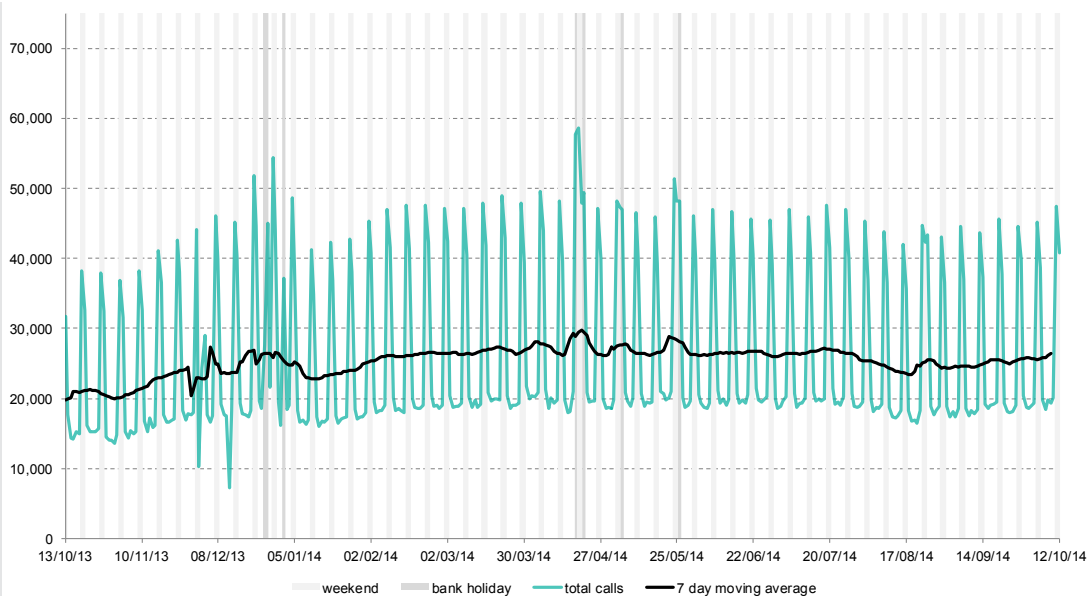
NHS Direct call data for the period 2010 to 2013 for comparable syndromes are used as the baseline. These data are included to illustrate the usual seasonal trend in indicators: rates for a specific indicator may be higher or lower than current rates collected from the 111 service due to differences in the services and care should be taken when comparing the two.

Data summary:

Year	Week	Total calls
2014	41	185,450

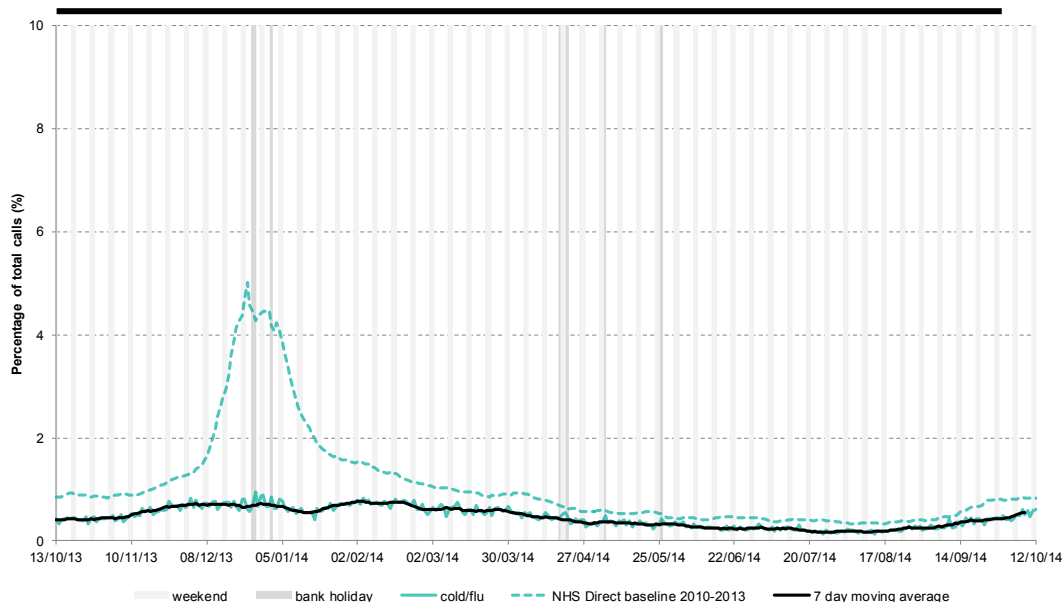
1: Total calls.

The total number of calls recorded each day by NHS 111.



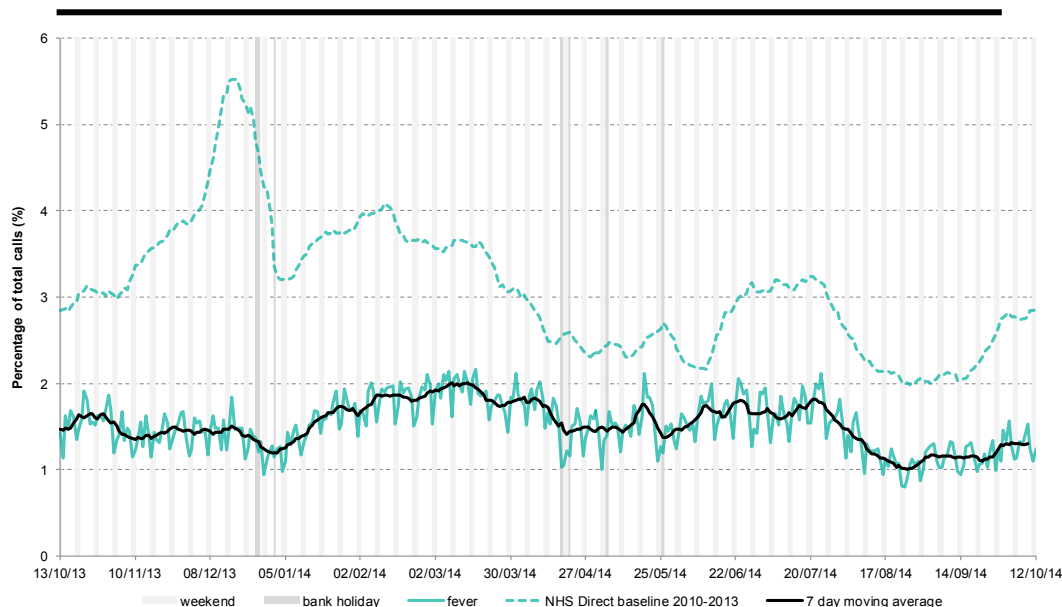
2: Cold/flu

Daily 'cold/flu' calls as a percentage of total calls. Daily indicative adjusted baselines based upon NHS Direct data from 2010 – 2013.



3: Fever

Daily 'fever' calls as a percentage of total calls. Daily indicative adjusted baselines based upon NHS Direct data from 2010 – 2013.

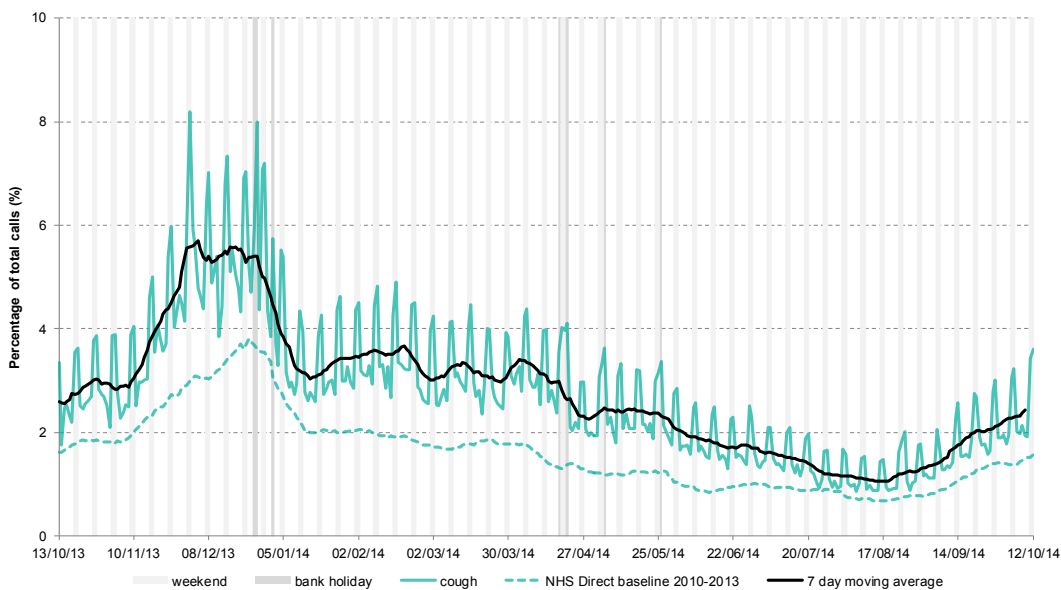


14 October 2014

Year: 2014 Week: 41

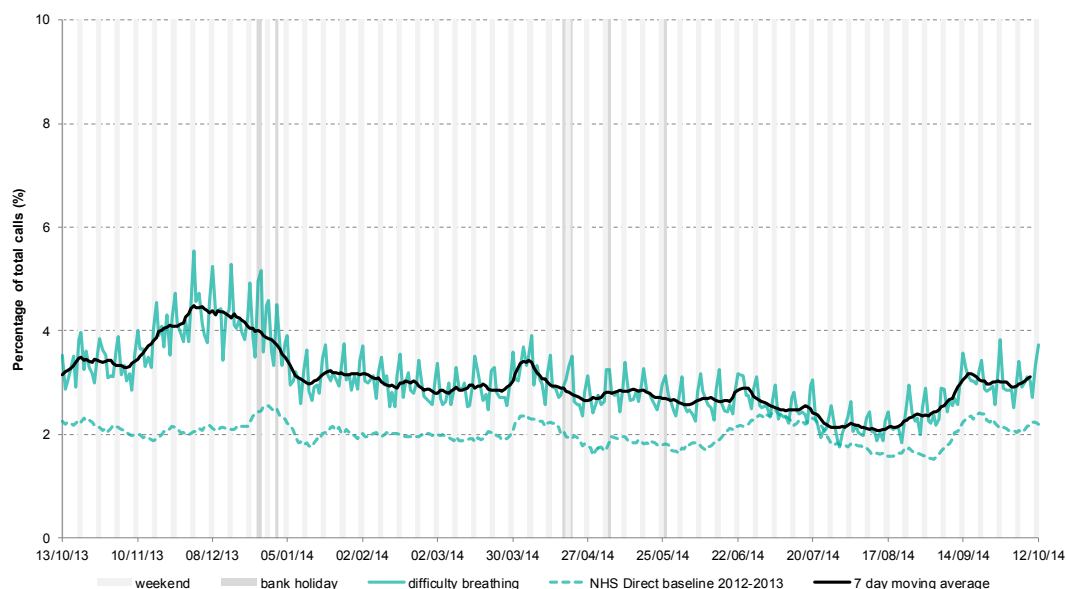
4: Cough

Daily 'cough' calls as a percentage of total calls. Daily indicative adjusted baselines based upon NHS Direct data from 2010 – 2013.



5: Difficulty breathing

Daily 'difficulty breathing' calls as a percentage of total calls. Daily indicative adjusted baselines based upon NHS Direct data from 2012 – 2013.



5b: Intentionally left blank

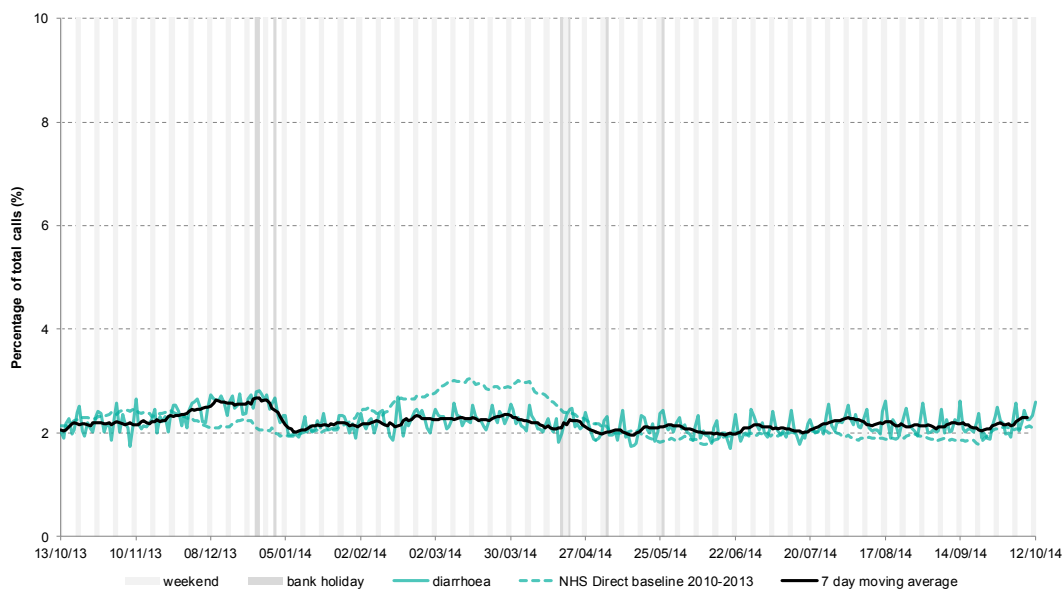
Intentionally left blank

14 October 2014

Year: 2014 Week: 41

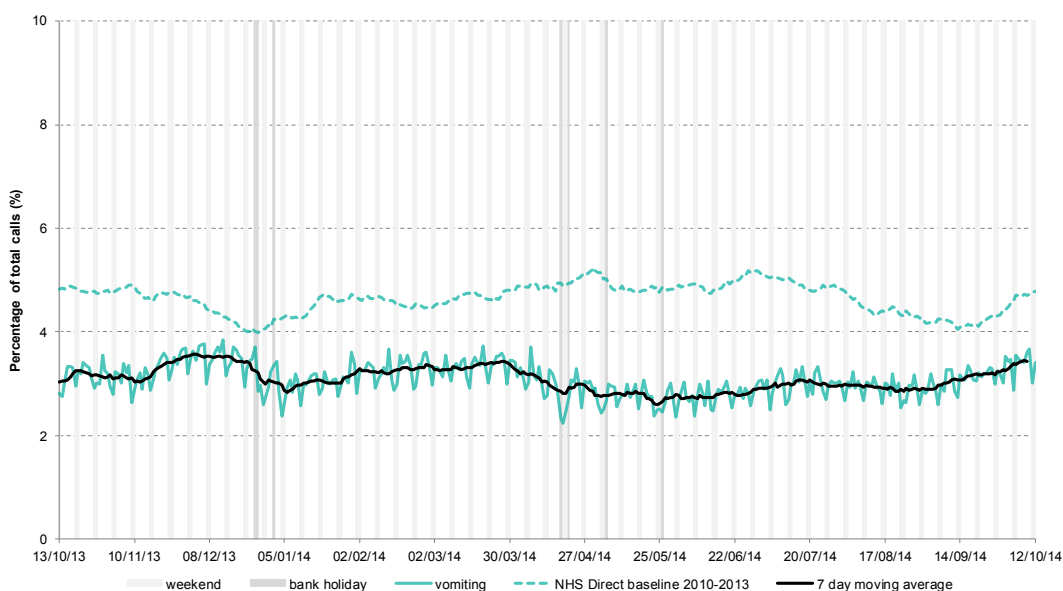
6: Diarrhoea

Daily 'diarrhoea' calls as a percentage of total calls. Daily indicative adjusted baselines based upon NHS Direct data from 2010 – 2013.



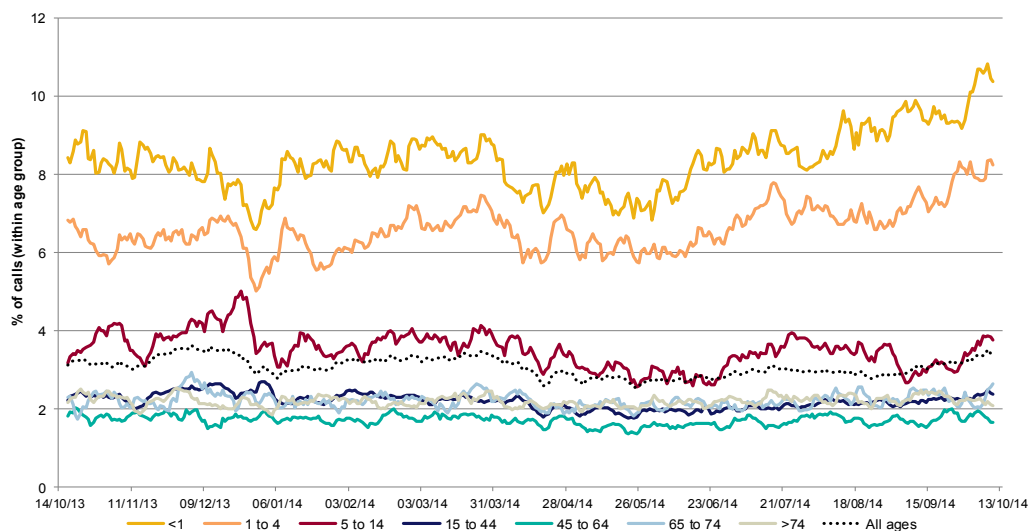
7: Vomiting

Daily 'vomiting' calls as a percentage of total calls. Daily indicative adjusted baselines based upon NHS Direct data from 2010 – 2013.



7a: Vomiting by age group

Vomiting calls as a percentage of total calls within each age group, shown as a 7 day moving average.

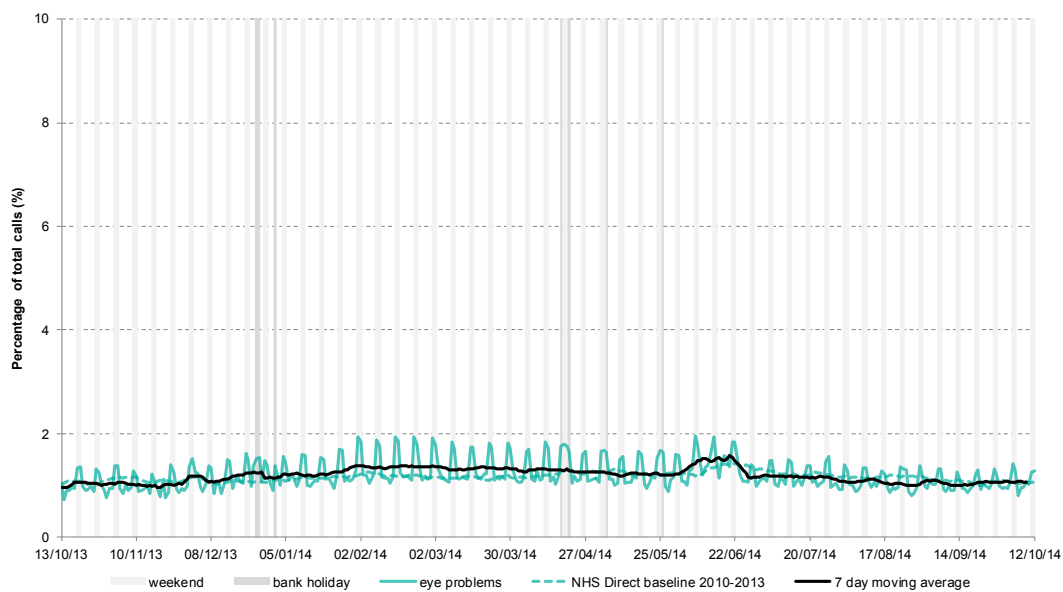


14 October 2014

Year: 2014 Week: 41

8: Eye problems

Daily 'eye problems' calls as a percentage of total calls. Daily indicative adjusted baselines based upon NHS Direct data from 2010 – 2013.



10: Intentionally left blank

Intentionally left blank

11: Intentionally left blank

Intentionally left blank

Introduction to charts:

- Weekends and bank holidays are marked by vertical **grey** lines (bank holidays **darker grey**).
 - A 7-day moving average (adjusted for bank holidays) is overlaid on the daily data reported in each chart, unless specified.
 - Until sufficient NHS 111 data are available, historical baseline are presented using NHS Direct data for 2010 to 2013 for comparable syndromes overlaid on each chart to illustrate expected trends. The NHS Direct historical baseline for difficulty breathing is based on data for 2012 to 2013 only.
 - For comparison, the baseline data are included using historical data from the NHS Direct 0845 telephone service. These data are included to illustrate seasonal trends in indicators: rates for a specific indicator may be higher or lower than current rates collected from the 111 service due to differences in the services and care should be taken when comparing the two.
 - This new syndromic surveillance system is still under development and further analyses at PHE Centre level will be included in future bulletins.
 - Please note that baselines presented for 'fever' and 'eye problems' have been updated during week 40 to correct an error in previously published baseline data.
-

Notes and further information:

Further information about NHS 111 can be found at:

<http://www.nhs.uk/NHSEngland/AboutNHSservices/Emergencyandurgentcareservices/Pages/NHS-111.aspx>

The Remote Health Advice Syndromic Surveillance bulletin can also be downloaded from the PHE Real-time Syndromic Surveillance website which also contains more information about syndromic surveillance:

<https://www.gov.uk/government/collections/syndromic-surveillance-systems-and-analyses>

Acknowledgements:

We are grateful to NHS 111 and to HSCIC for their assistance and support in providing the anonymised call data that underpin the Remote Health Advice Syndromic Surveillance System.

Remote Health Advice Syndromic Surveillance System Bulletin.

Produced by: PHE Real-time Syndromic Surveillance Team
6th Floor, 5 St Philip's Place, Birmingham, B3 2PW

Tel: 0344 225 3560 > Option 4 > Option 2

Fax: 0121 236 2215

Web: <https://www.gov.uk/government/collections/syndromic-surveillance-systems-and-analyses>

Contact ReSST:
syndromic.surveillance
@phe.gov.uk