

YORKSHIRE DALES NATIONAL PARK (DESIGNATION) (VARIATION) CONFIRMATION ORDER 2015

Boundary as confirmed by the Secretary of State for Environment, Food & Rural Affairs

Area subject to the Yorkshire Dales National Park (Designation) (Variation) Order 2012, but not confirmed by the Secretary of State (on maps YDNP 1 and YDNP 9 only)

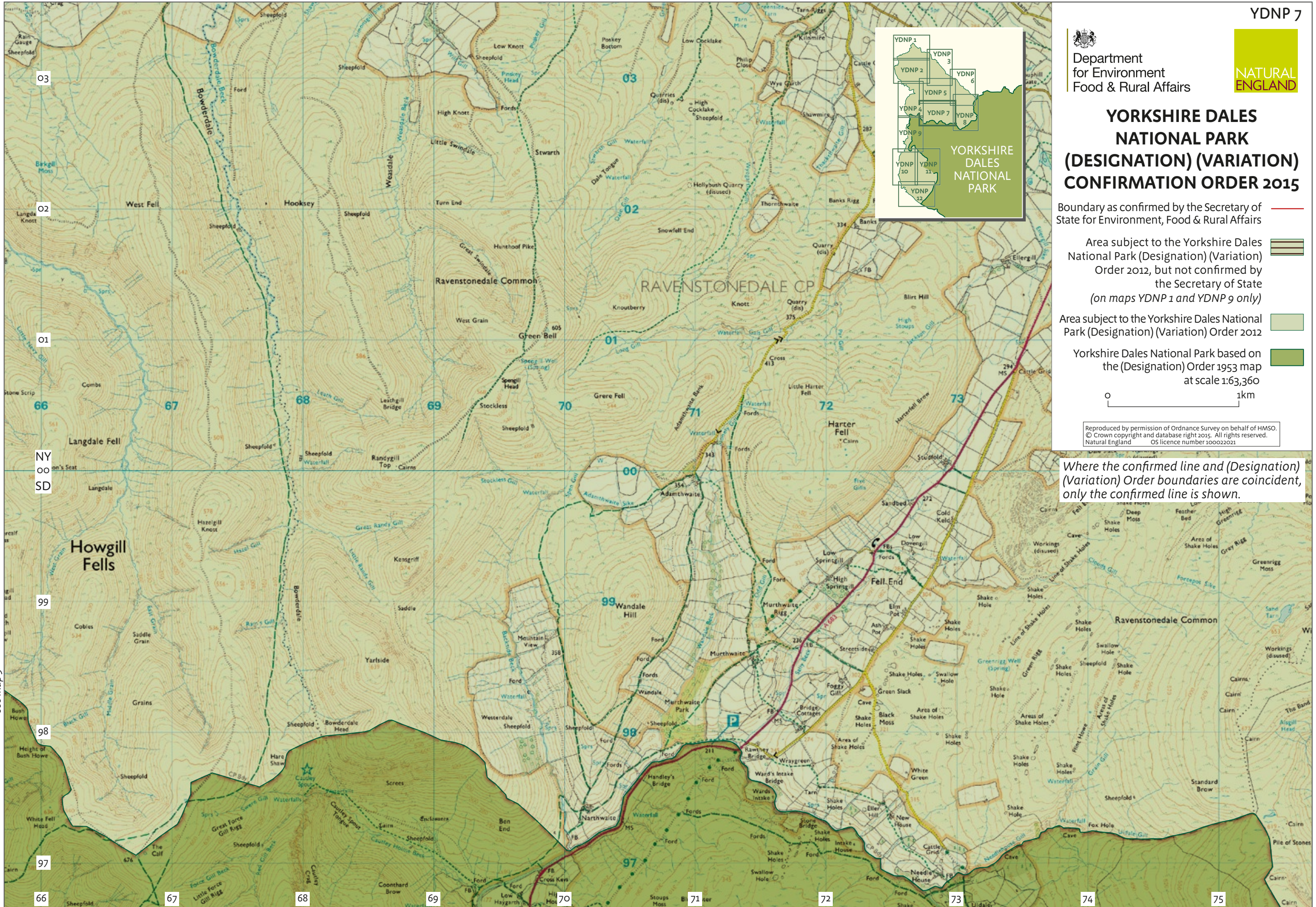
Area subject to the Yorkshire Dales National Park (Designation) (Variation) Order 2012

Yorkshire Dales National Park based on the (Designation) Order 1953 map at scale 1:63,360

0 1km

Reproduced by permission of Ordnance Survey on behalf of HMSO. © Crown copyright and database right 2015. All rights reserved. Natural England OS licence number 100022021

Where the confirmed line and (Designation) (Variation) Order boundaries are coincident, only the confirmed line is shown.



see map 9

see map 8