



05 November 2014

Year: 2014 Week: 44

In This Issue:

- Key messages.
- Diagnostic indicators at a glance.
- GP practices and denominator population.
- National syndromic indicators.
- Notes and further information.
- Appendix.

Key messages

Data to: 02 November 2014

Respiratory indicators including upper and lower respiratory tract infections (figures 1 and 4) and influenza-like illness (figure 2) remained stable during week 44 and within seasonally expected levels.

Diagnostic indicators at a glance:

Indicator	Trend	Level
Upper respiratory tract infection	no trend	similar to baseline levels
Influenza-like illness	no trend	similar to baseline levels
Pharyngitis	no trend	above baseline levels
Lower respiratory tract infection	increasing	similar to baseline levels
Pneumonia	no trend	similar to baseline levels
Gastroenteritis	decreasing	similar to baseline levels
Vomiting	decreasing	similar to baseline levels
Diarrhoea	decreasing	above baseline levels
Severe asthma	decreasing	above baseline levels
Wheeze	no trend	above baseline levels
Allergic rhinitis	no trend	
Conjunctivitis	no trend	similar to baseline levels
Mumps	no trend	similar to baseline levels
Measles	no trend	similar to baseline levels
Rubella	no trend	similar to baseline levels
Pertussis	no trend	similar to baseline levels
Chickenpox	increasing	similar to baseline levels
Herpes zoster	no trend	similar to baseline levels
Cellulitis	no trend	above baseline levels
Impetigo	no trend	above baseline levels

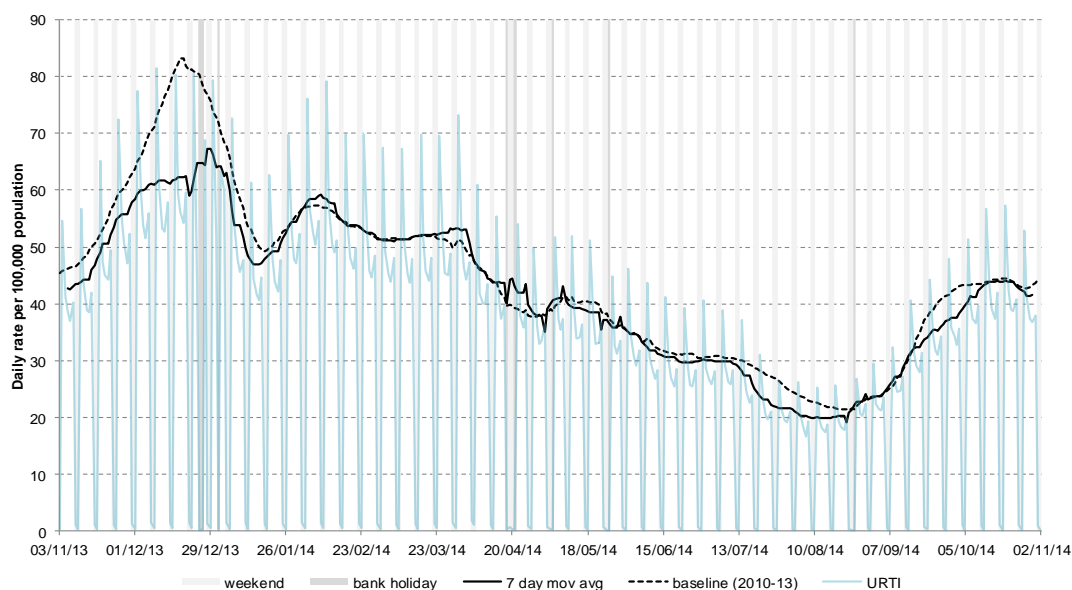
GP practices and denominator population:

Year	Week	GP Practices Reporting**	Population size**
2014	44	4518	33.1 million

**based on the average number of practices and denominator population in the reporting working week.

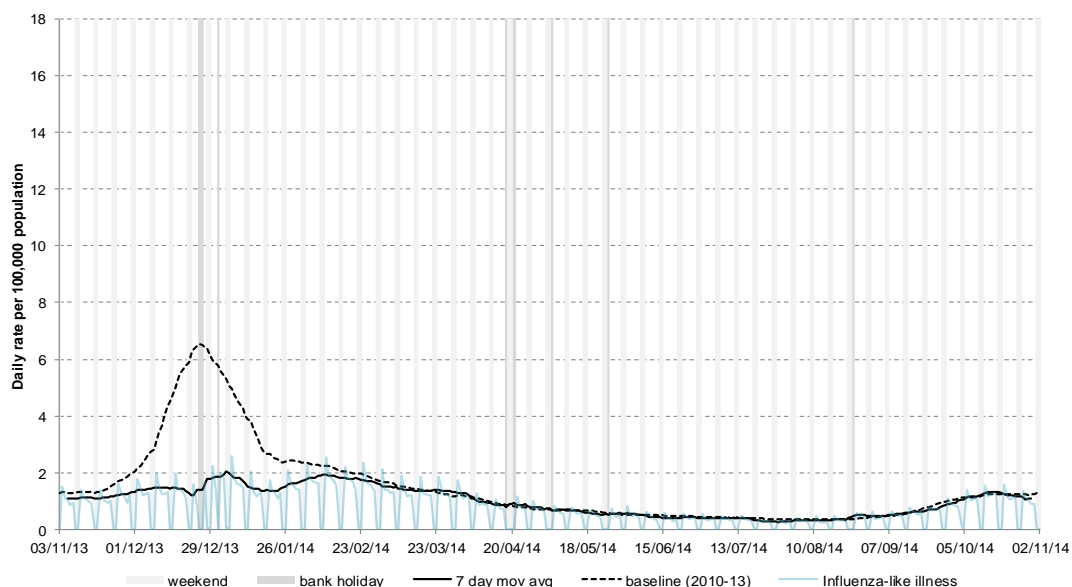
1: Upper respiratory tract infection (URTI)

Daily incidence rate (and 7-day moving average*) per 100,000 population (all England, all ages).



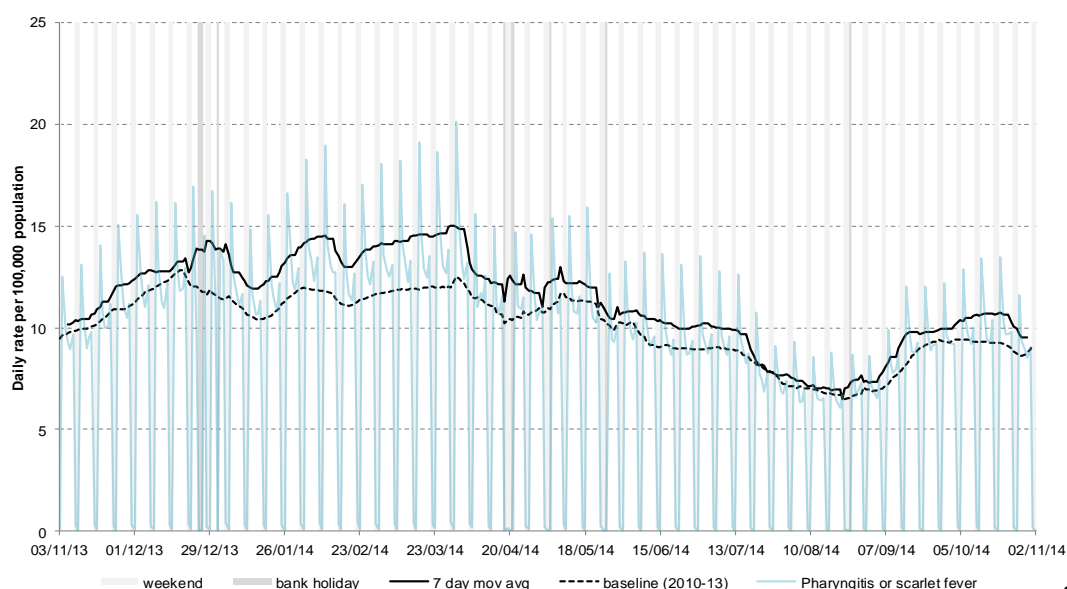
2: Influenza-like illness (ILI)

Daily incidence rates (and 7-day moving average*) per 100,000 population (all England, all ages).



3: Pharyngitis or scarlet fever

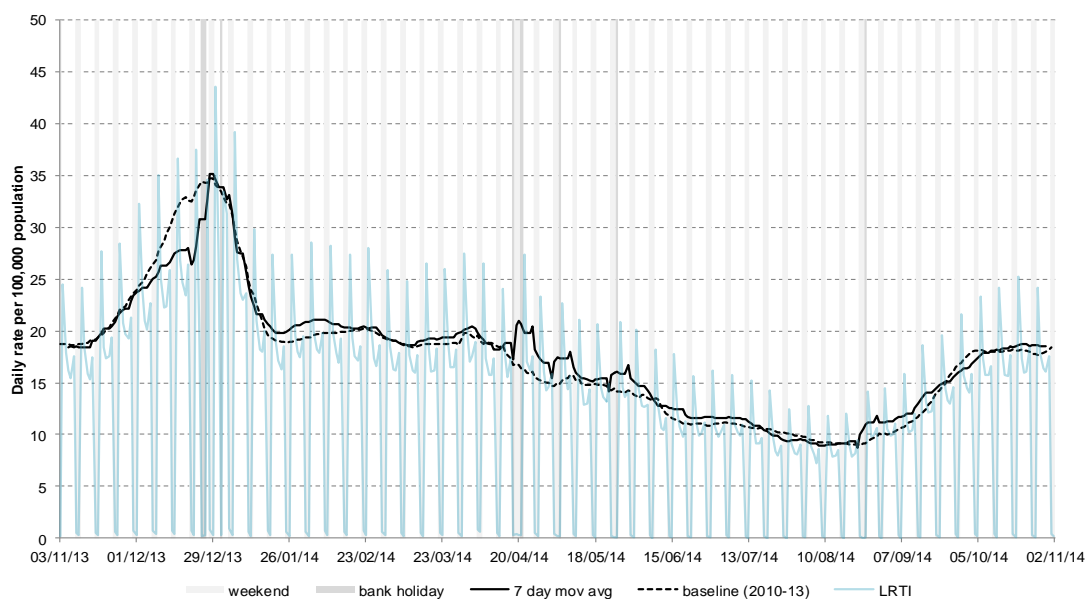
Daily incidence rates (and 7-day moving average*) per 100,000 population (all England, all ages).



* 7-day moving average adjusted for bank holidays.

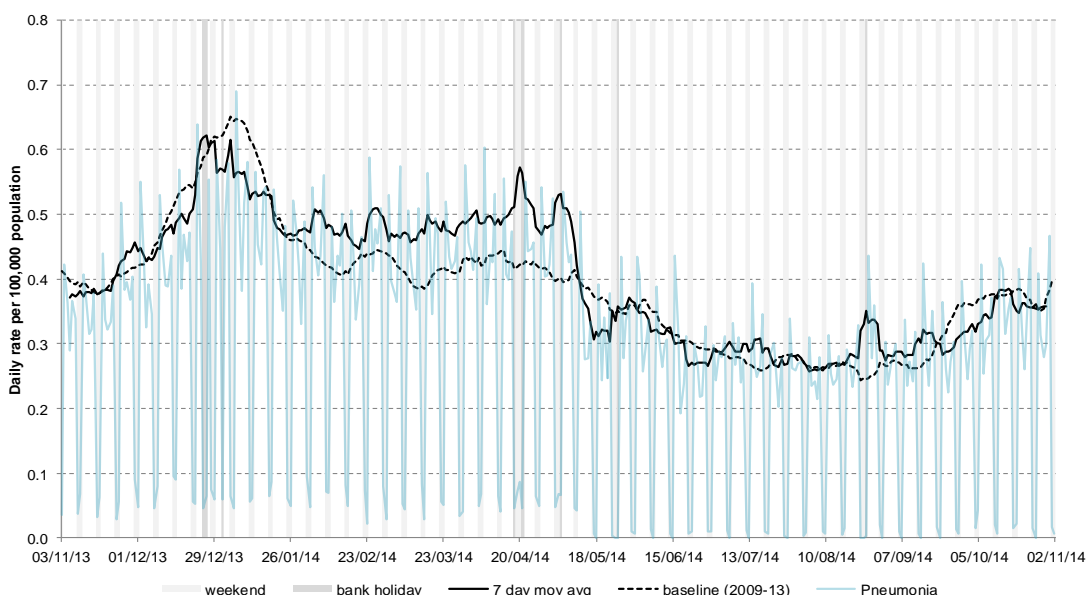
4: Lower respiratory tract infection (LRTI)

Daily incidence rate (and 7-day moving average*) per 100,000 population (all England, all ages).



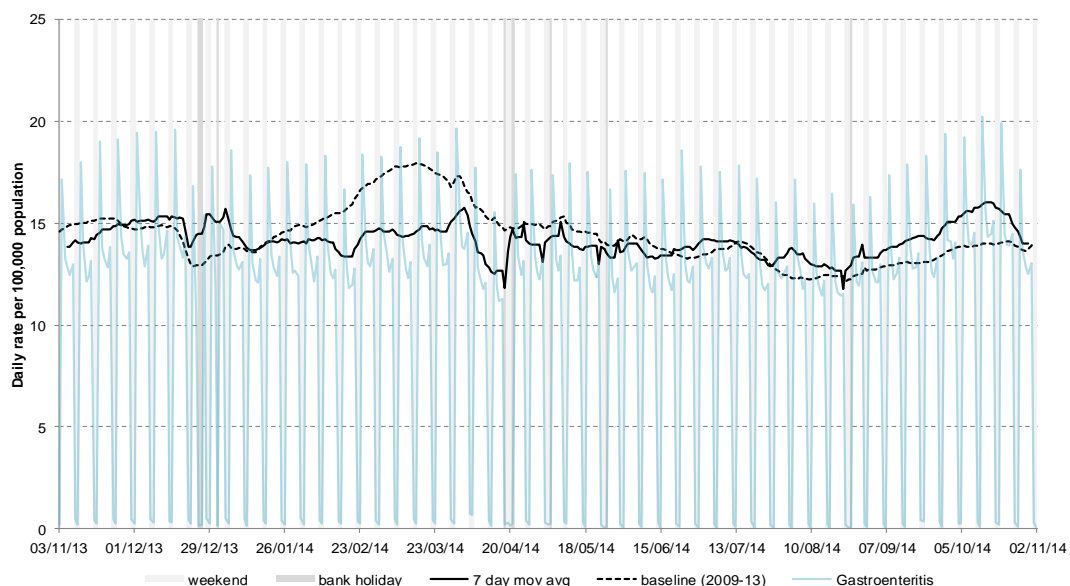
5: Pneumonia

Daily incidence rate (and 7-day moving average*) per 100,000 population (all England, all ages).



6: Gastroenteritis

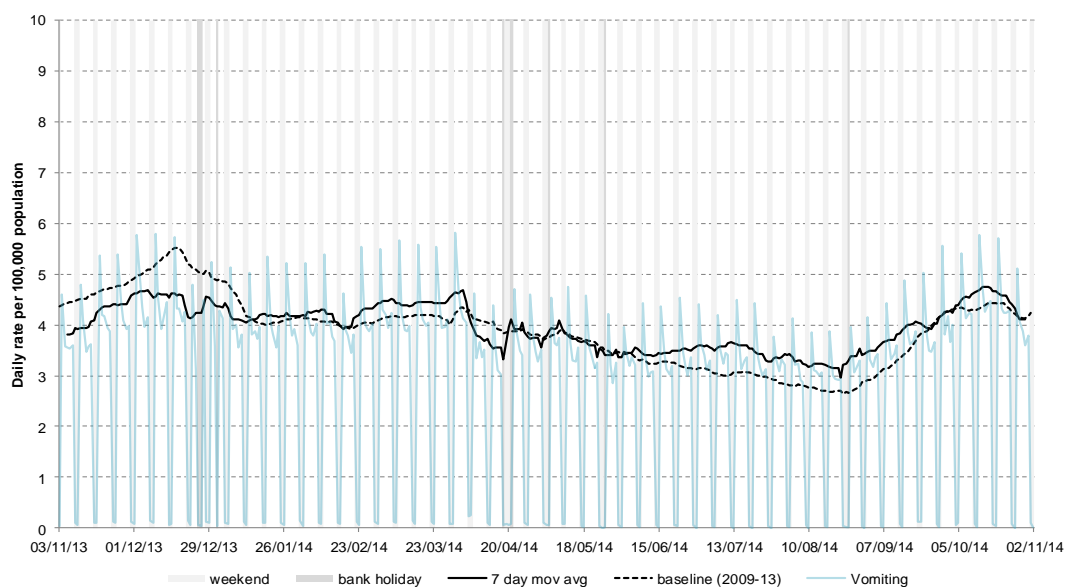
Daily incidence rate (and 7-day moving average*) per 100,000 population (all England, all ages).



* 7-day moving average adjusted for bank holidays.

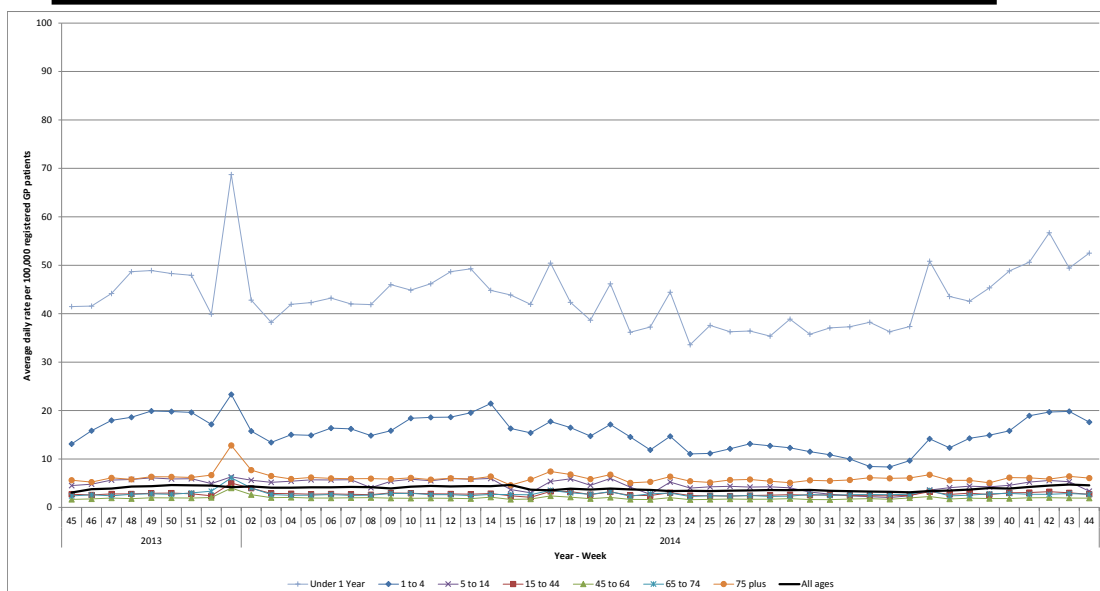
7: Vomiting

Daily incidence rate (and 7-day moving average*) per 100,000 population (all England, all ages).



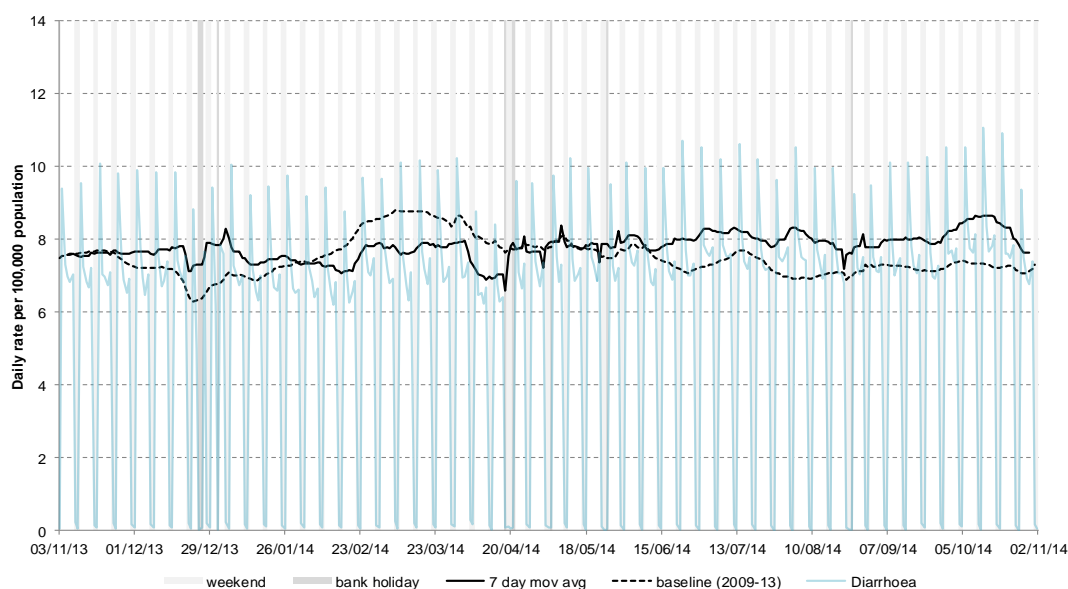
7a: Vomiting by age

Average daily incidence rate by week per 100,000 population (all England).



8: Diarrhoea

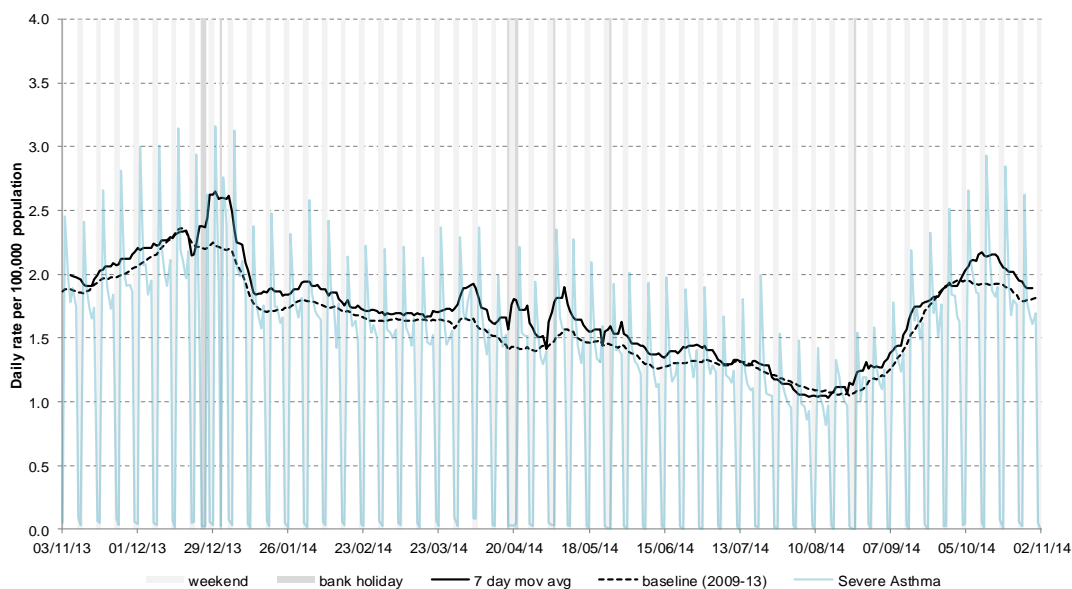
Daily incidence rate (and 7-day moving average*) per 100,000 population (all England, all ages).



* 7-day moving average adjusted for bank holidays.

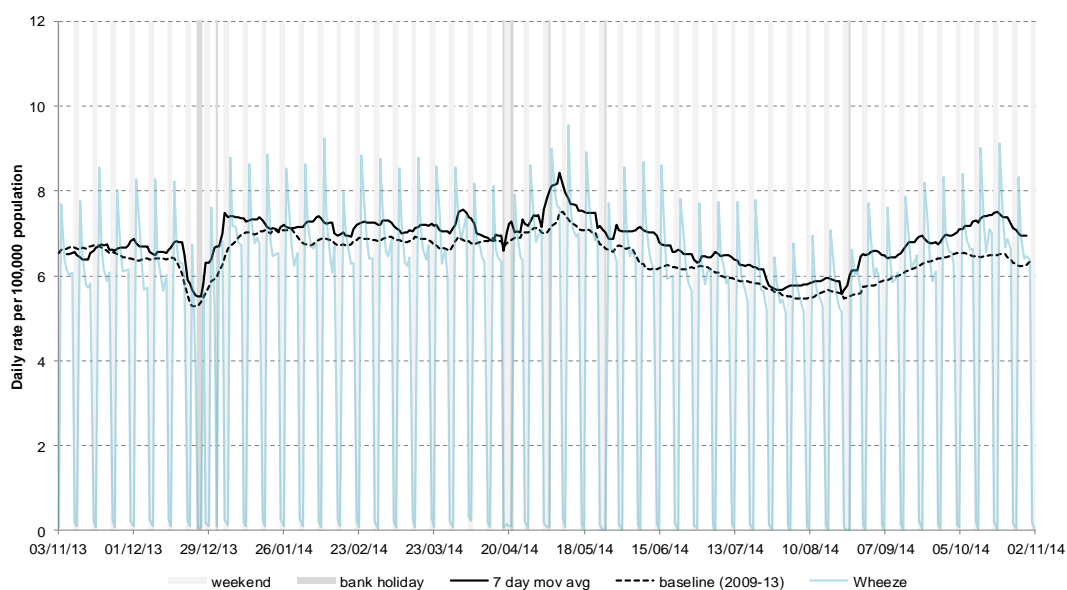
9: Severe asthma

Daily incidence rate (and 7-day moving average*) per 100,000 population (all England, all ages).



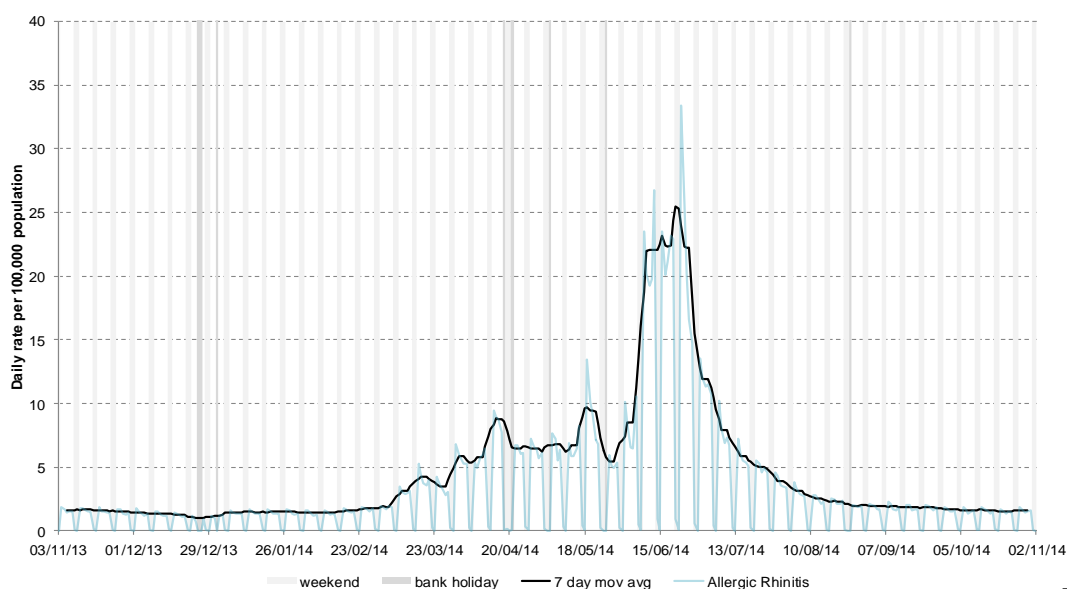
10: Wheeze

Daily incidence rate (and 7-day moving average*) per 100,000 population (all England, all ages).



11: Allergic rhinitis

Daily incidence rate (and 7-day moving average*) per 100,000 population (all England, all ages).



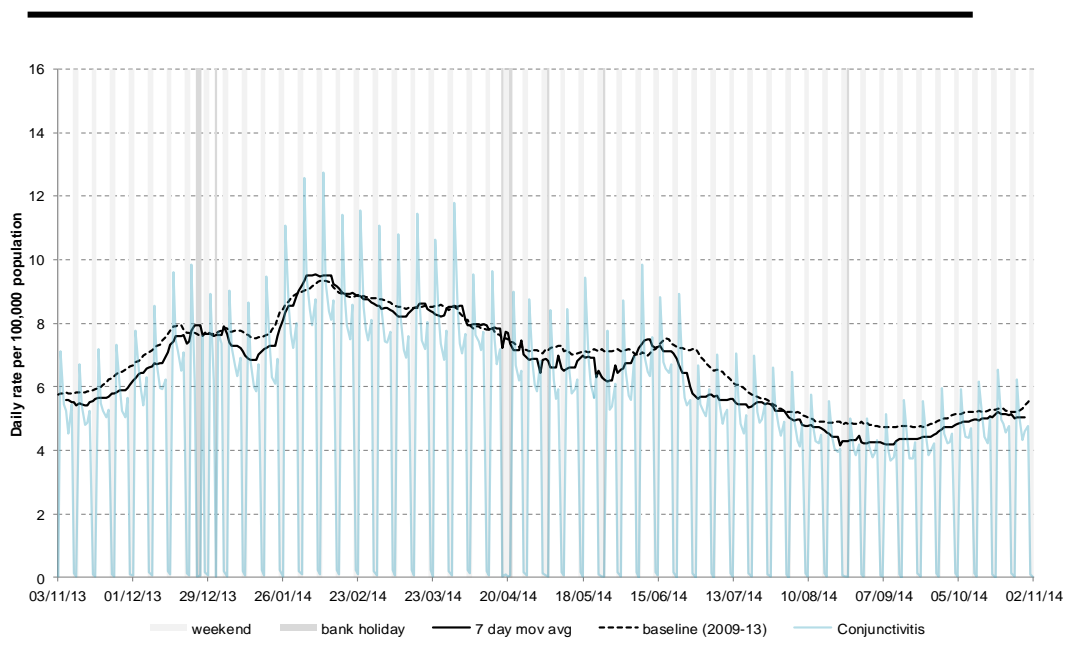
* 7-day moving average adjusted for bank holidays.

12: Intentionally left blank

Intentionally left blank.

13: Conjunctivitis

Daily incidence rate (and 7-day moving average*) per 100,000 population (all England, all ages).



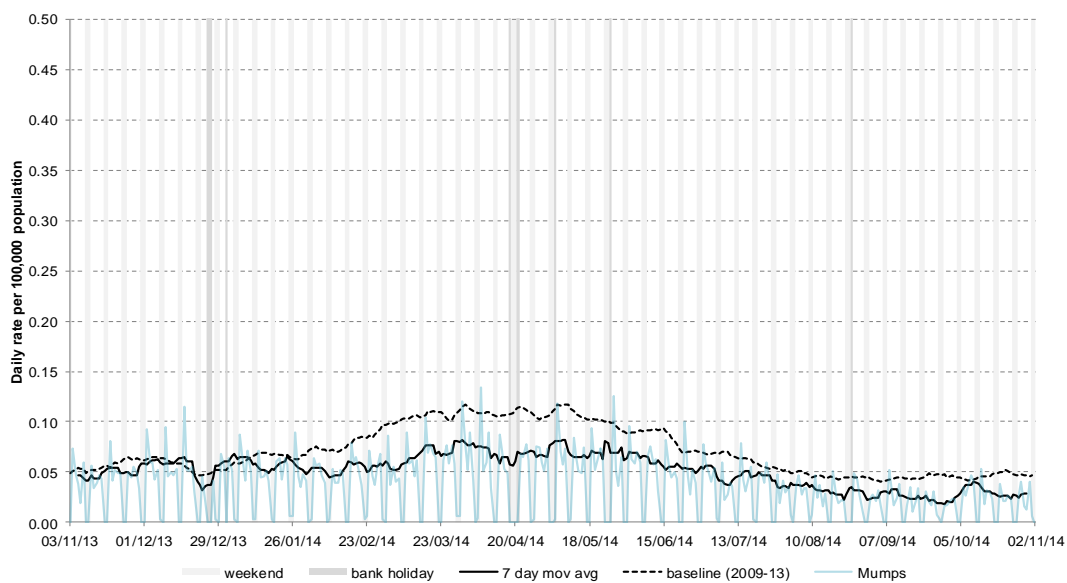
14: Intentionally left blank

Intentionally left blank.

* 7-day moving average adjusted for bank holidays.

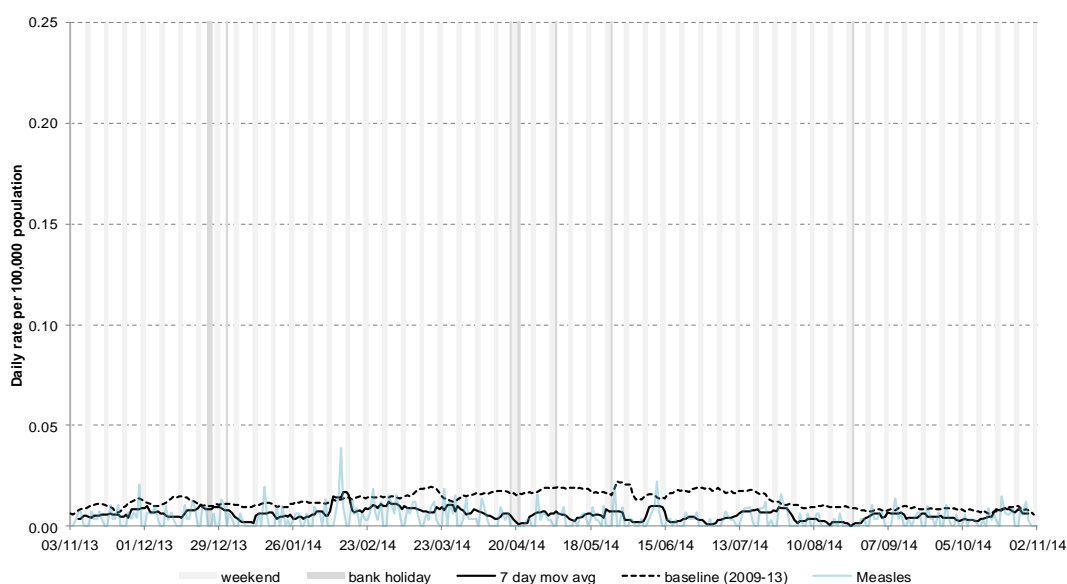
15: Mumps

Daily incidence rate (and 7-day moving average*) per 100,000 population (all England, all ages).



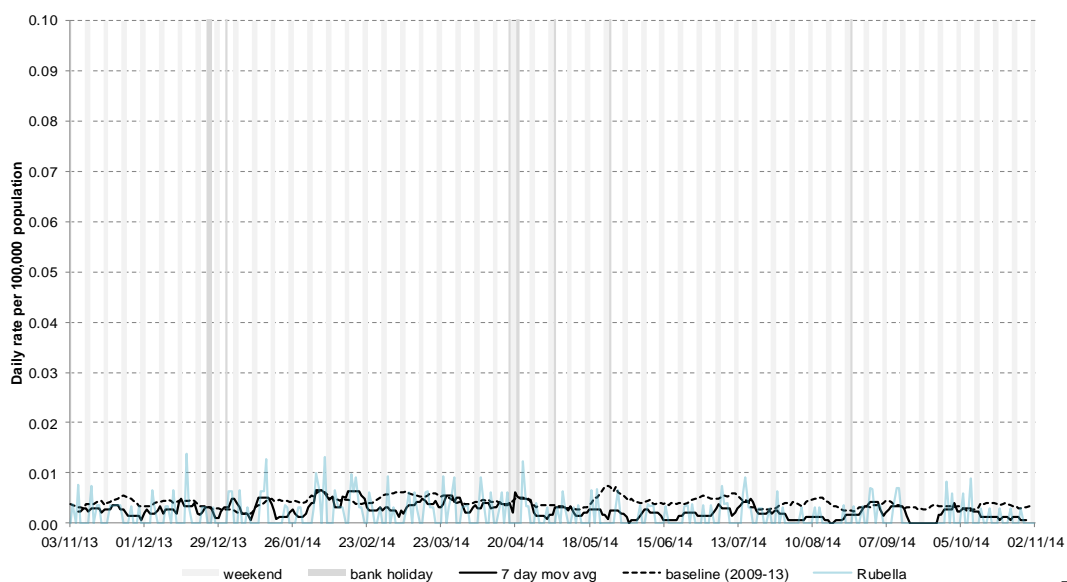
16: Measles

Daily incidence rate (and 7-day moving average*) per 100,000 population (all England, all ages).



17: Rubella

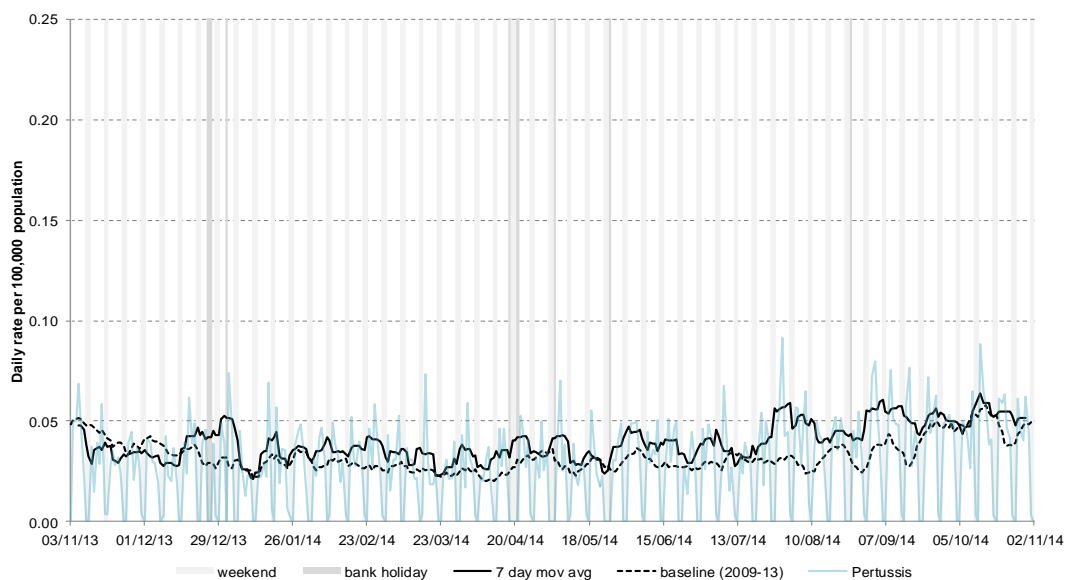
Daily incidence rate (and 7-day moving average*) per 100,000 population (all England, all ages).



* 7-day moving average adjusted for bank holidays.

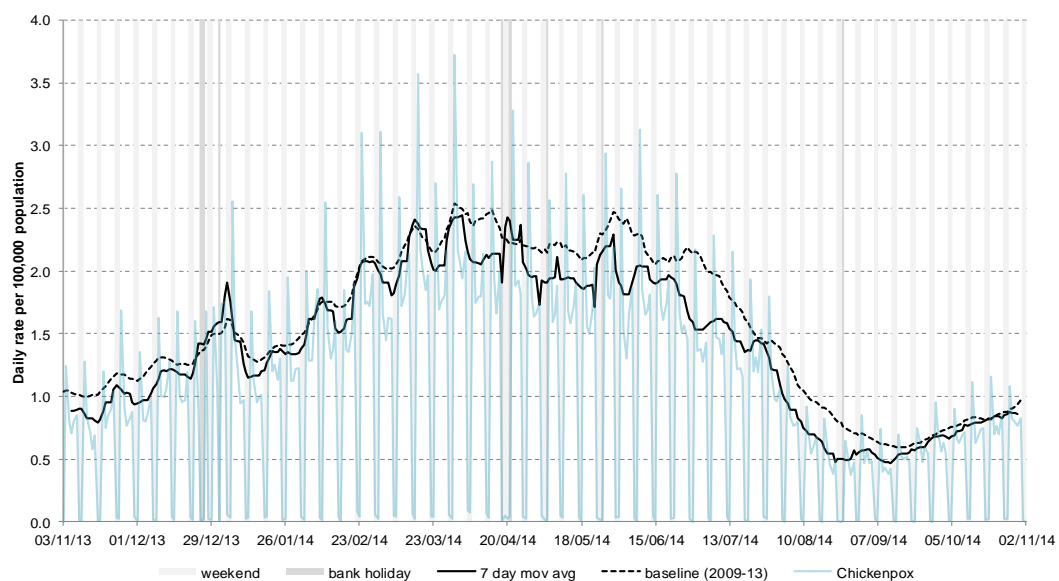
18: Pertussis

Daily incidence rate (and 7-day moving average*) per 100,000 population (all England, all ages).



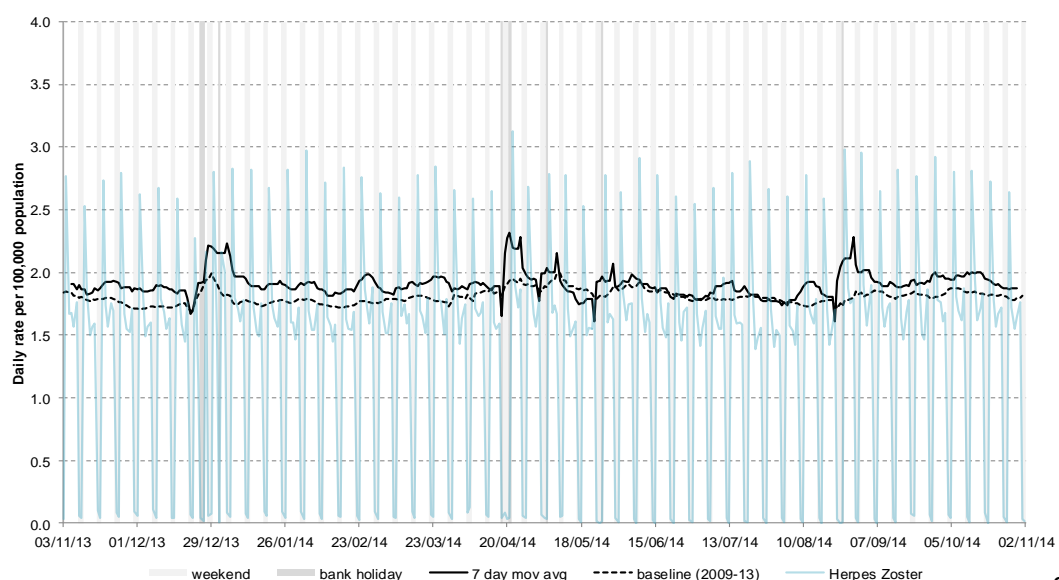
19: Chickenpox

Daily incidence rate (and 7-day moving average*) per 100,000 population (all England, all ages).



20: Herpes zoster

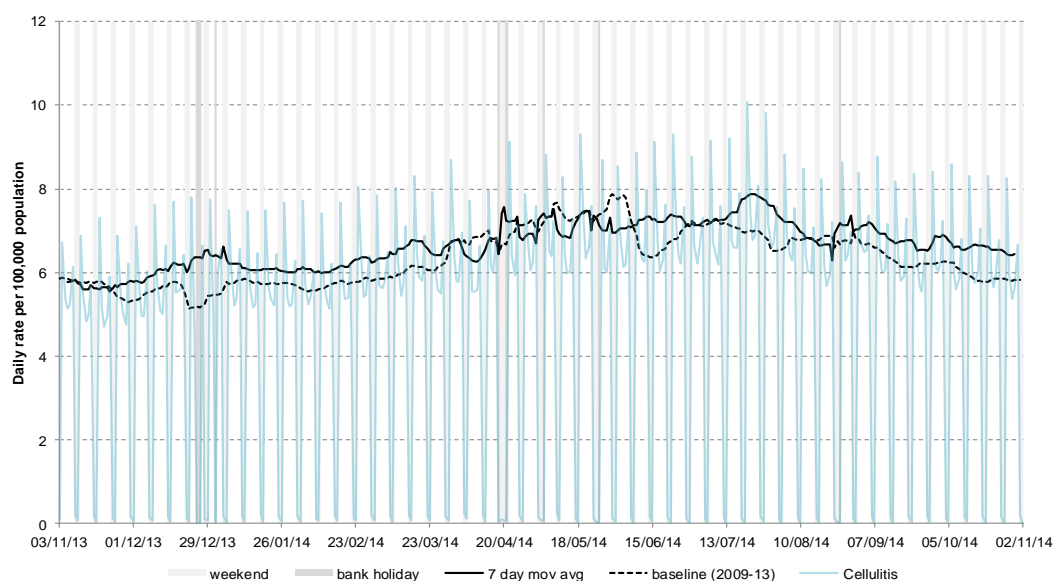
Daily incidence rate (and 7-day moving average*) per 100,000 population (all England, all ages).



* 7-day moving average adjusted for bank holidays.

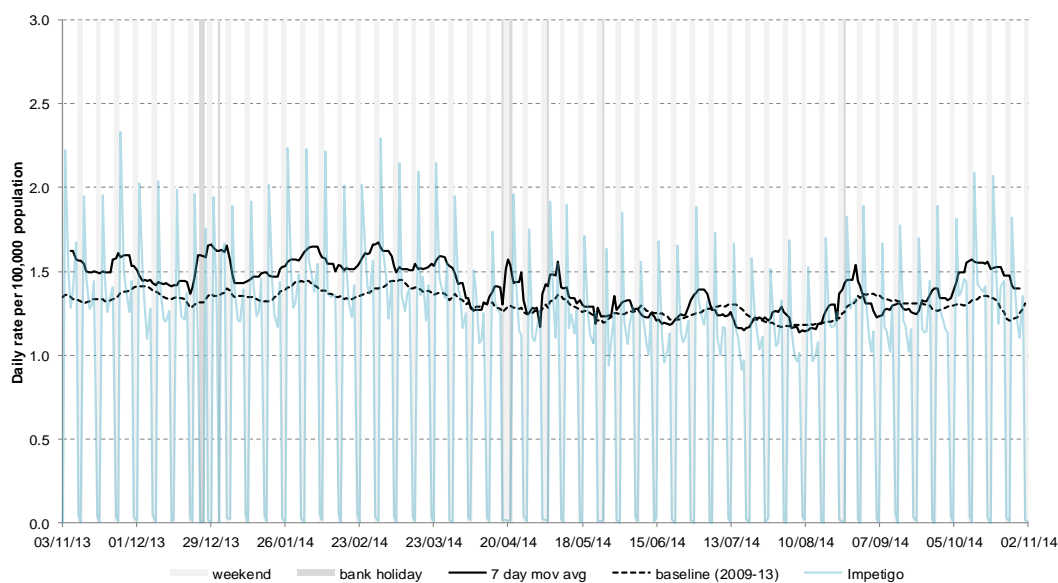
21: Cellulitis

Daily incidence rate (and 7-day moving average*) per 100,000 population (all England, all ages).



22: Impetigo

Daily incidence rate (and 7-day moving average*) per 100,000 population (all England, all ages).



23: Intentionally left blank

Intentionally left blank.

* 7-day moving average adjusted for bank holidays.

Notes and further information

- The Public Health England GP in hours surveillance system is a syndromic surveillance system monitoring community-based morbidity recorded by GP practices.
- This system captures anonymised GP morbidity data from two GP clinical software systems, EMIS, from version 1 of the QSurveillance® database, and TPP SystmOne.
- Historic baselines are smoothed to remove bank holiday effects. Data from 2009 has been excluded for selected indicators which were affected by the H1N1 influenza pandemic. No baseline is currently included for allergic rhinitis.
- The appendix illustrates weekly GP in hours consultation data for influenza-like illness (ILI). Each PHE Centre is represented by a thematic map showing its constituent local authorities (LA) coloured according to the weekly consultation rate of ILI per 100,000 population.
- The maps on the following pages contains Ordnance Survey data © Crown copyright and database right 2014. Contains National Statistics data © Crown copyright and database right 2014.

Acknowledgements:

We thank and acknowledge the University of Nottingham, ClinRisk® and the contribution of EMIS and EMIS practices. Data source: version 1 of the QSurveillance® database.

We thank TPP, ResearchOne and the SystmOne GP practices contributing to this surveillance system.

GP In Hours Syndromic Surveillance System Bulletin.

Produced by: PHE Real-time Syndromic Surveillance Team
6th Floor, 5 St Philip's Place, Birmingham, B3 2PW

Tel: 0344 225 3560 > Option 4 > Option 2 **Fax:** 0121 236 2215

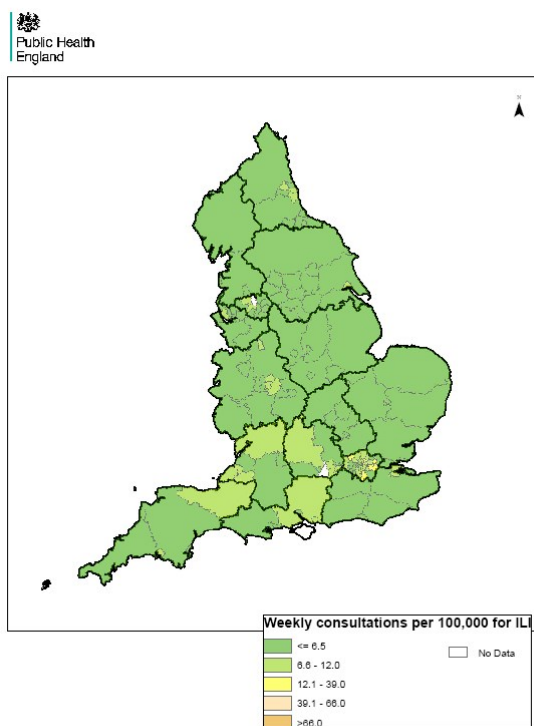
Web: <https://www.gov.uk/government/collections/syndromic-surveillance-systems-and-analyses>

Contact ReSST:
syndromic-surveillance
@phe.gov.uk

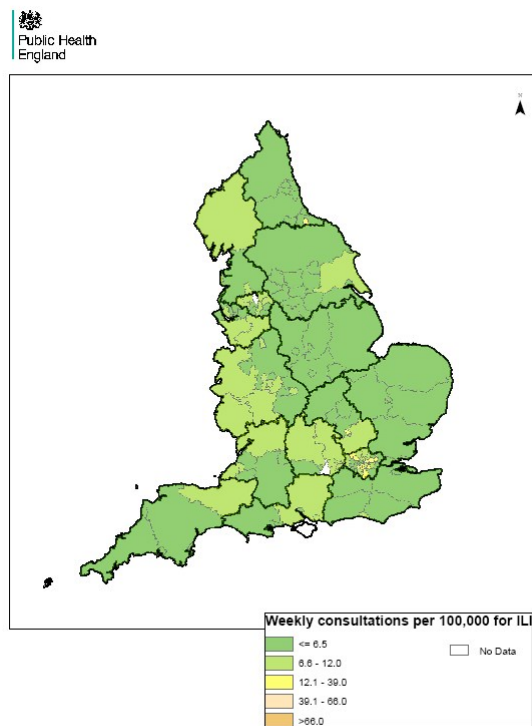
England

Weekly ILI
consultation
rate by LA
for England

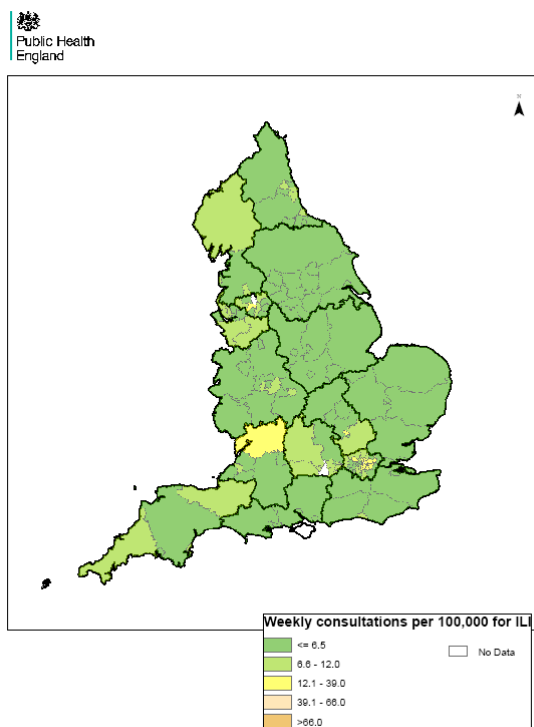
Week 41



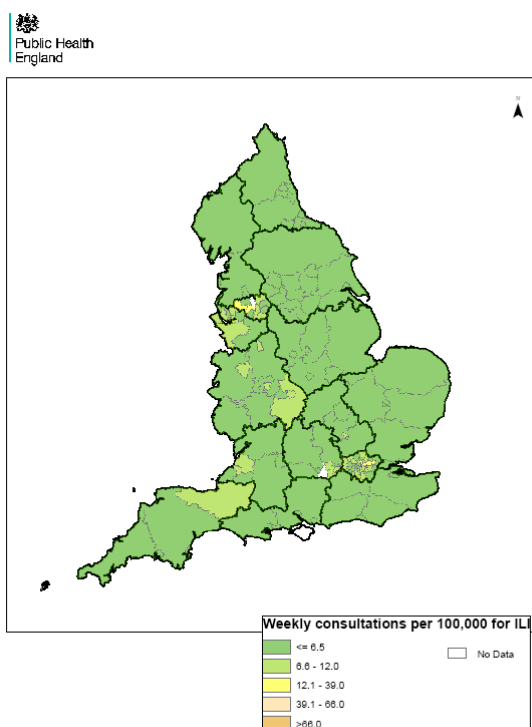
Week 42



Week 43



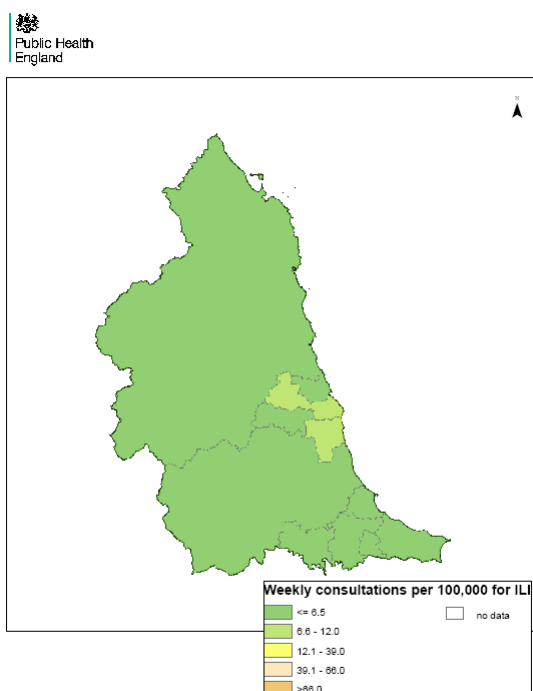
Week 44



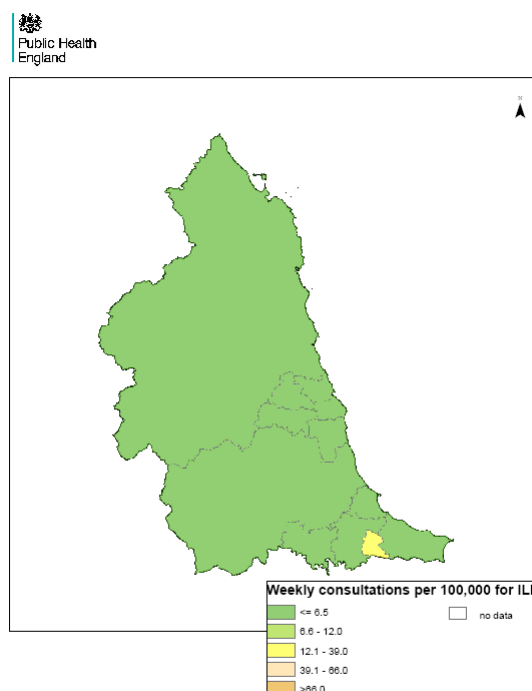
North East

Weekly ILI
consultation
rate by LA
for North
East PHE
Centre

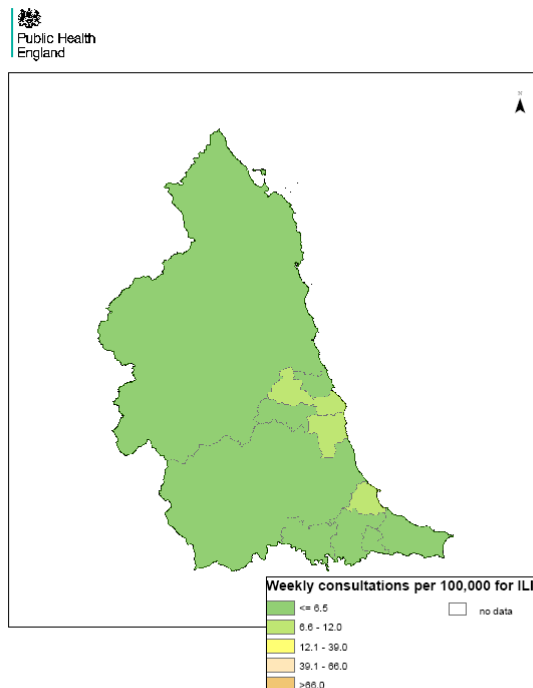
Week 41



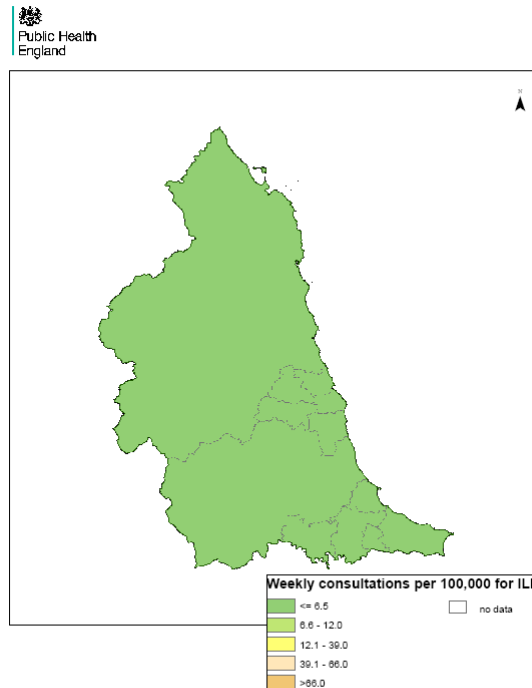
Week 42



Week 43



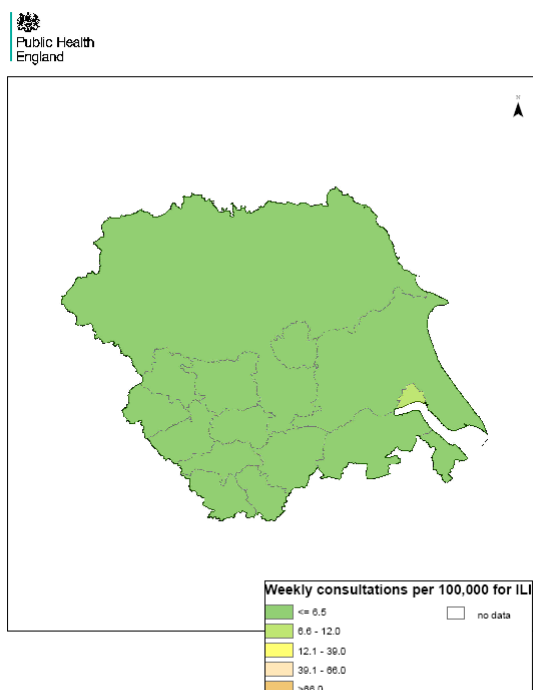
Week 44



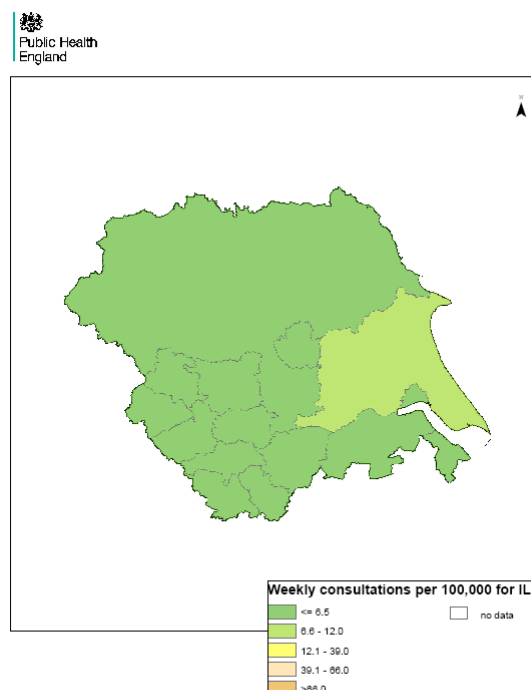
Yorkshire & Humber

Weekly ILI consultation rate by LA for Yorkshire & Humber PHE Centre

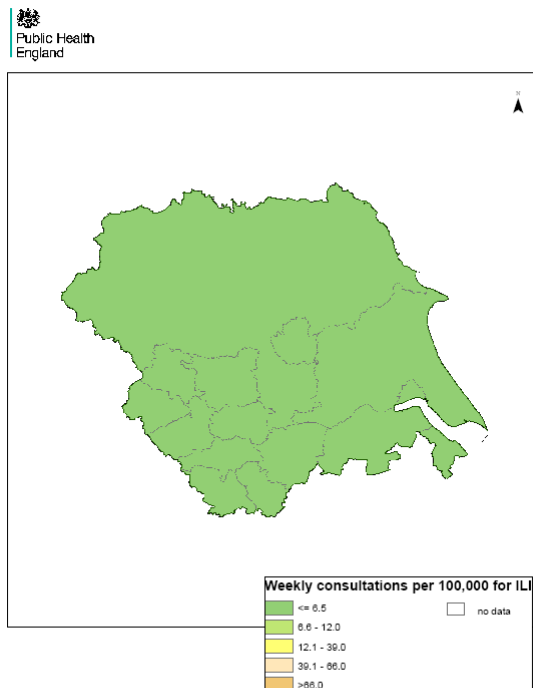
Week 41



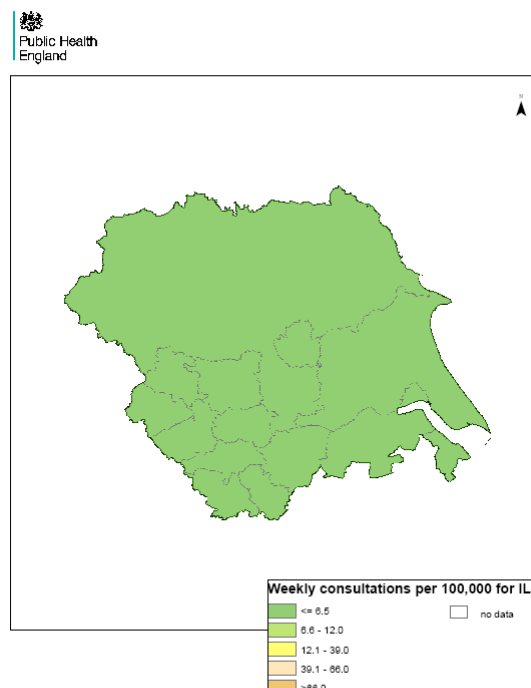
Week 42



Week 43



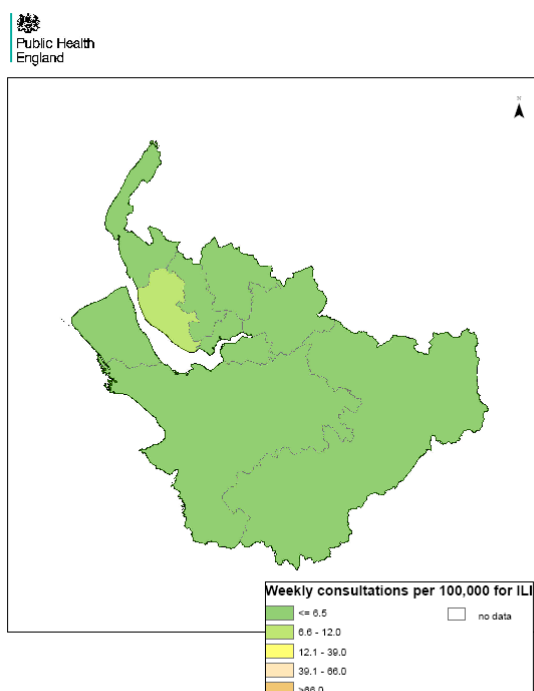
Week 44



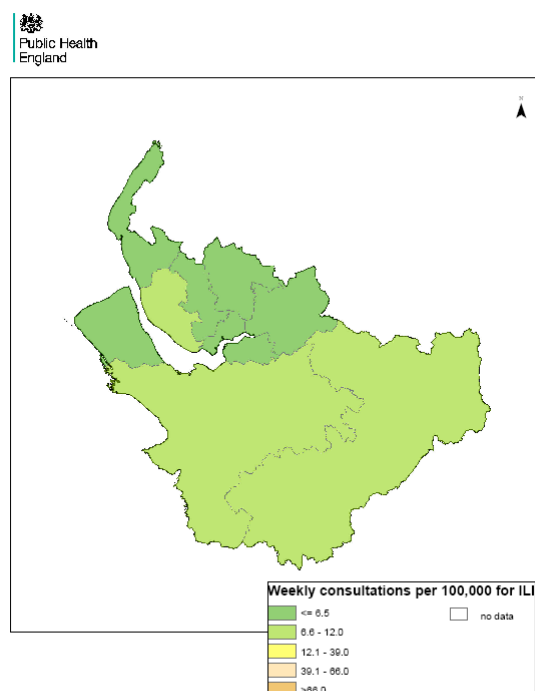
Cheshire & Merseyside

Weekly ILI consultation rate by LA for Cheshire & Merseyside PHE Centre

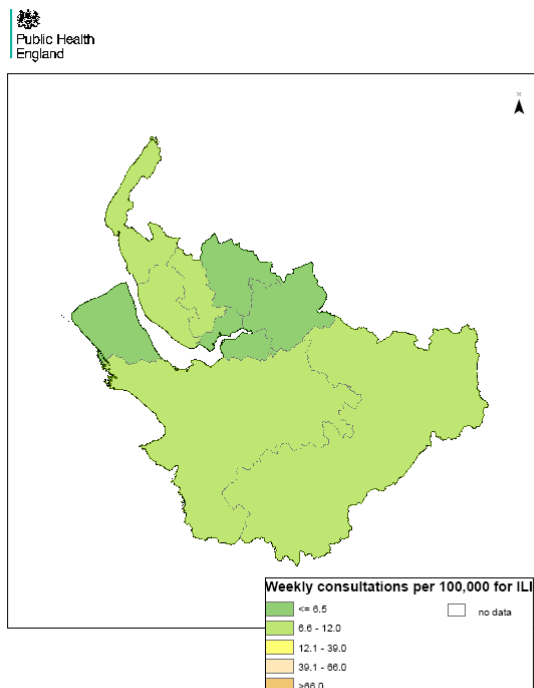
Week 41



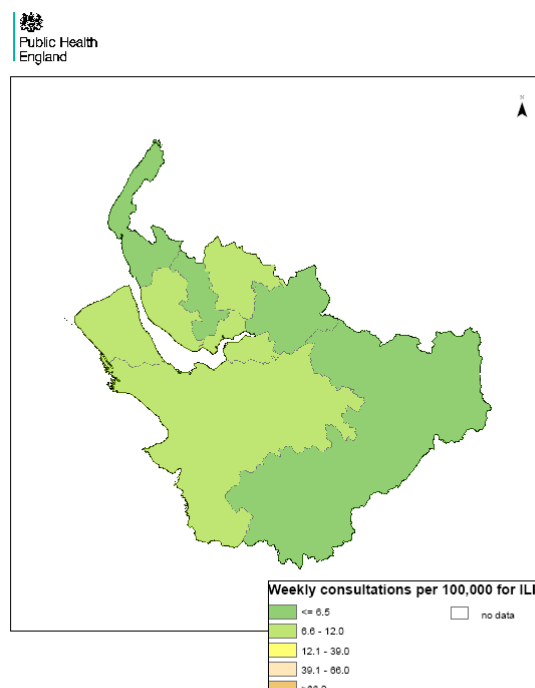
Week 42



Week 43



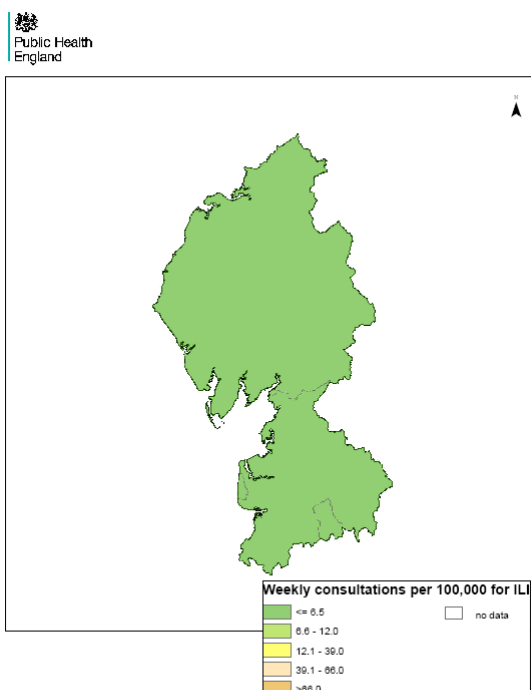
Week 44



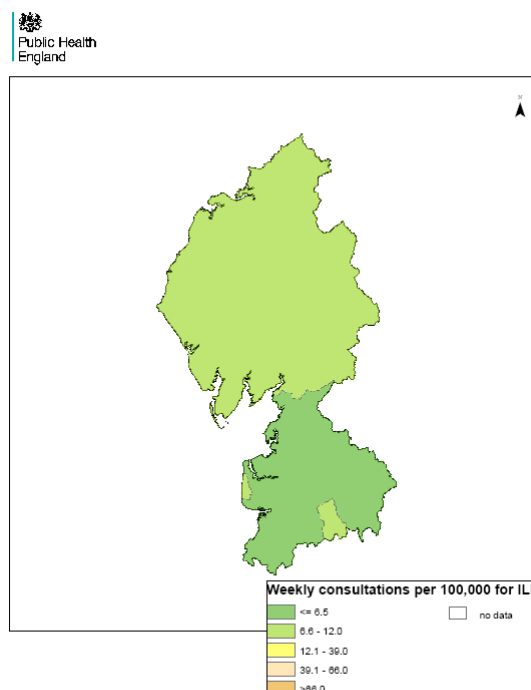
Cumbria & Lancashire

Weekly ILI consultation rate by LA for Cumbria & Lancashire PHE Centre

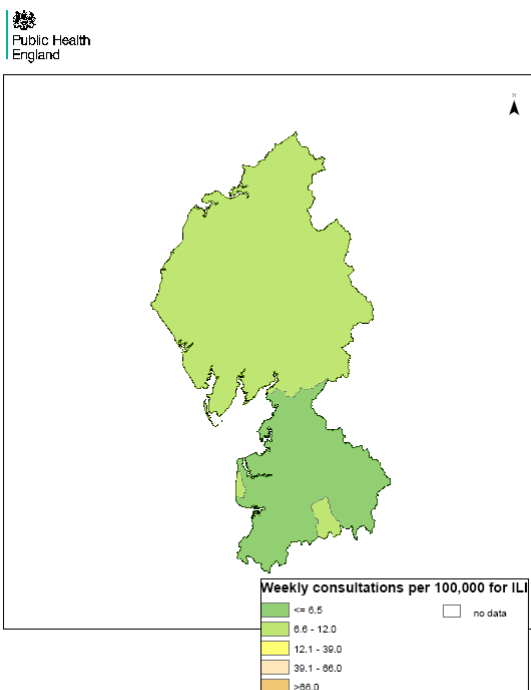
Week 41



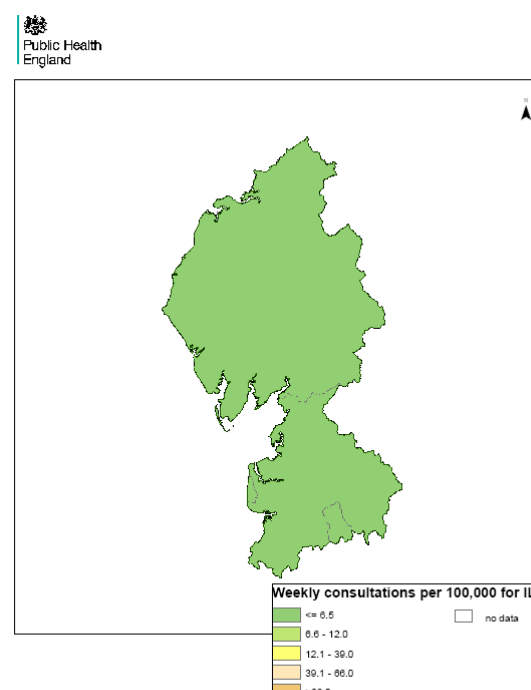
Week 42



Week 43



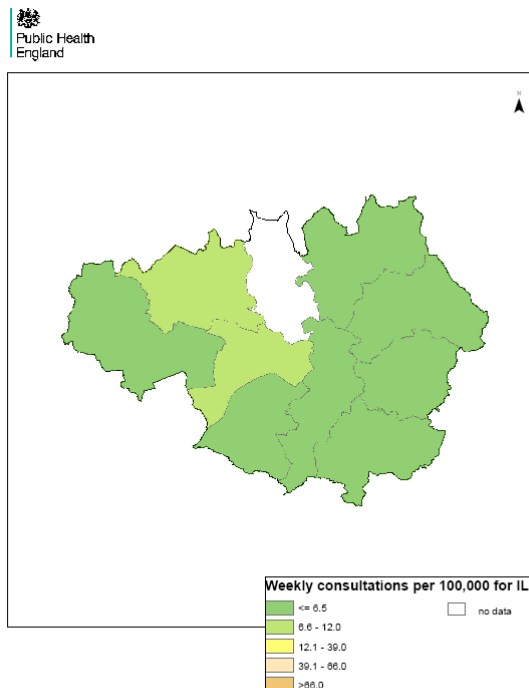
Week 44



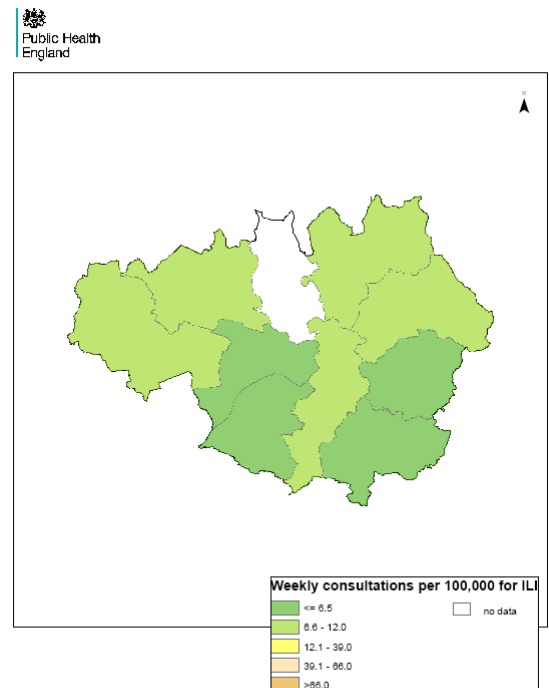
5: Greater Manchester

Weekly ILI consultation rate by LA for Greater Manchester PHE Centre

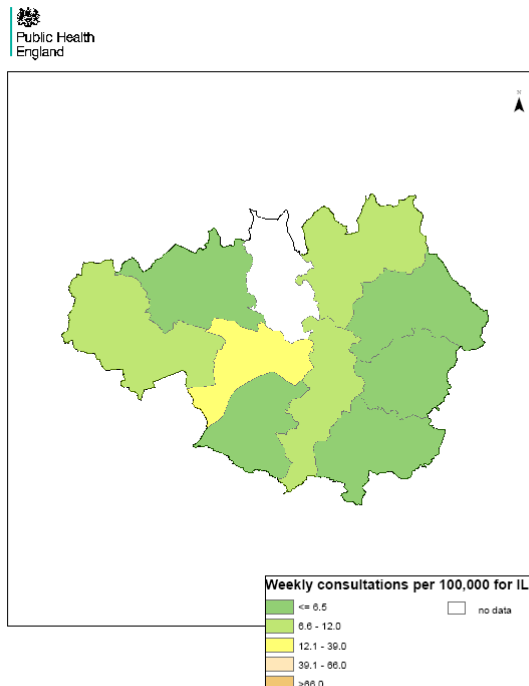
Week 41



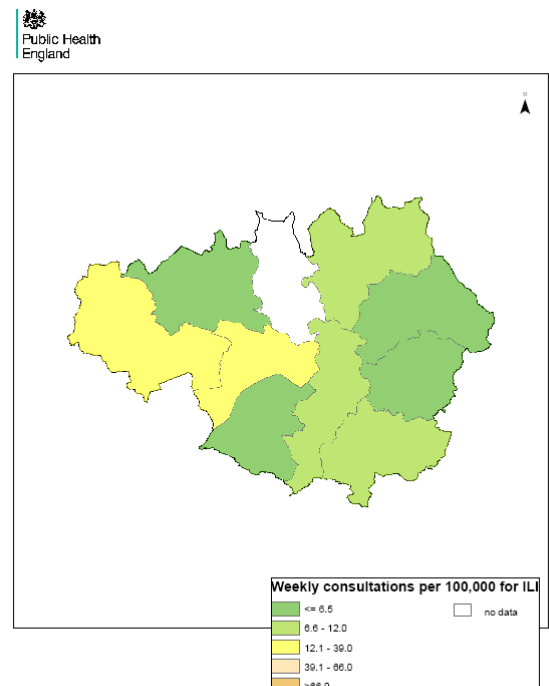
Week 42



Week 43



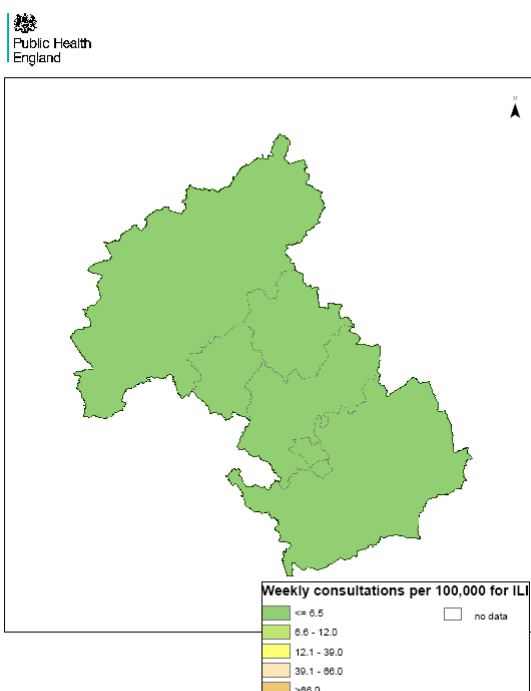
Week 44



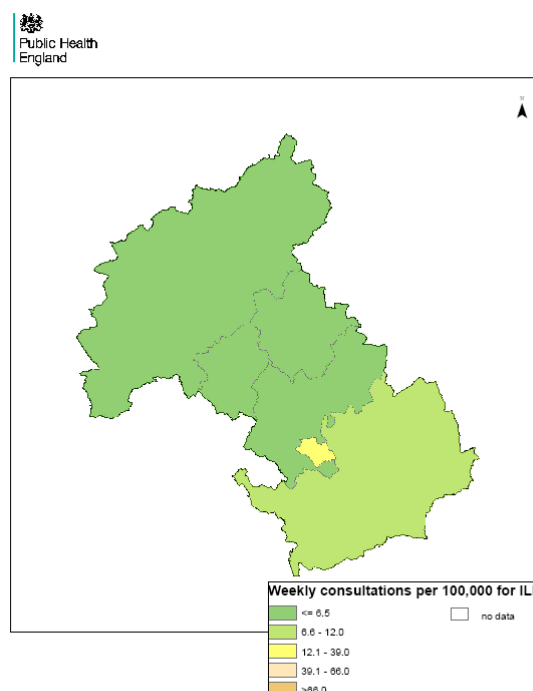
**South
Midlands &
Hertfordshire**

Weekly ILI
consultation
rate by LA
for South
Midlands &
Hertfordshire
PHE Centre

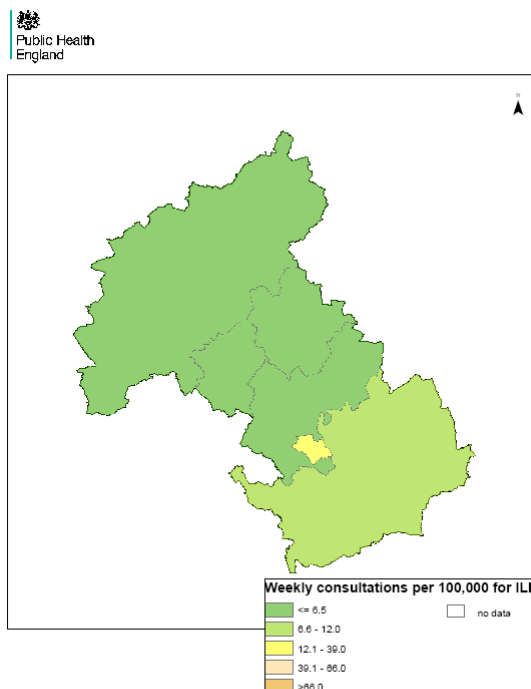
Week 41



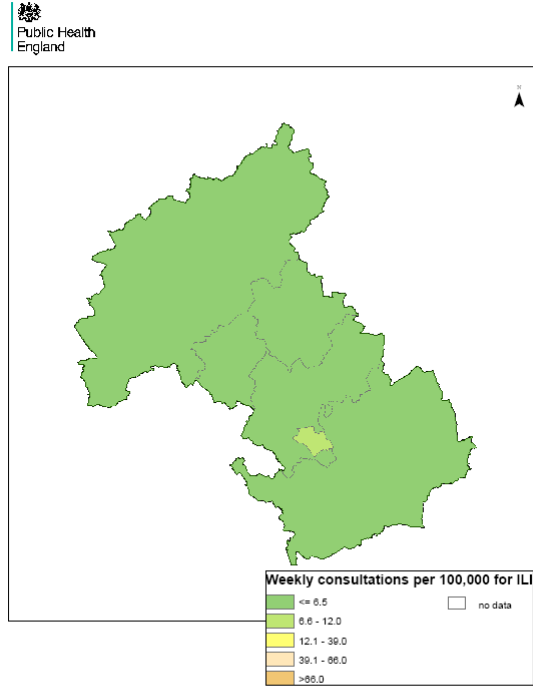
Week 42



Week 43



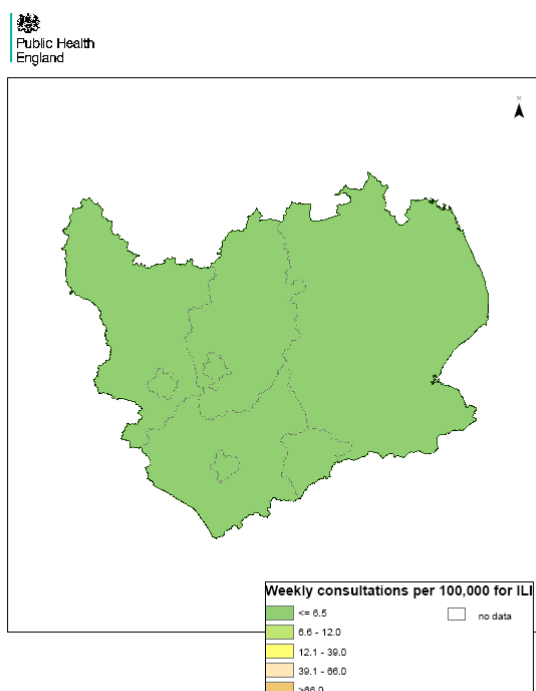
Week 44



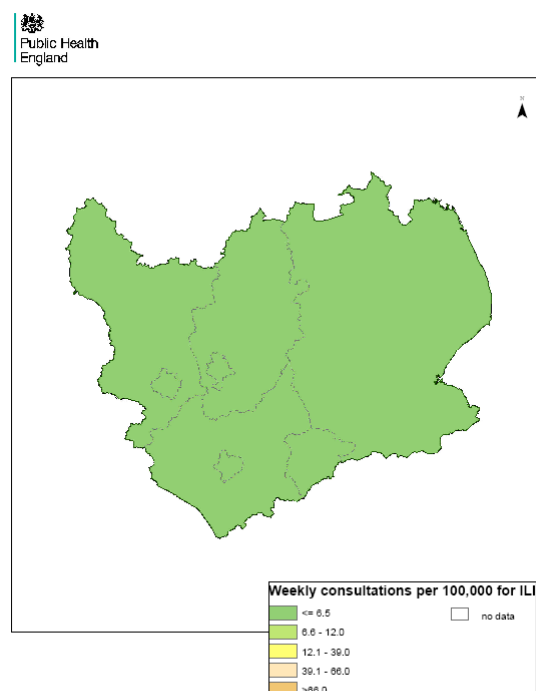
**East
Midlands**

Weekly ILI
consultation
rate by LA
for East
Midlands
PHE Centre

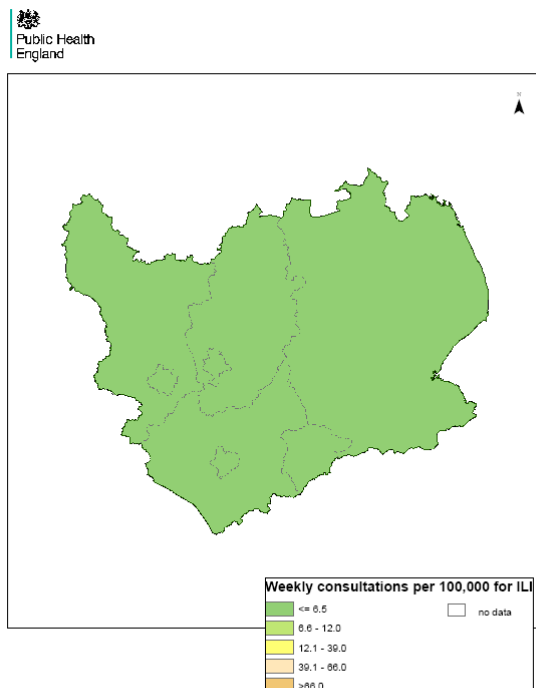
Week 41



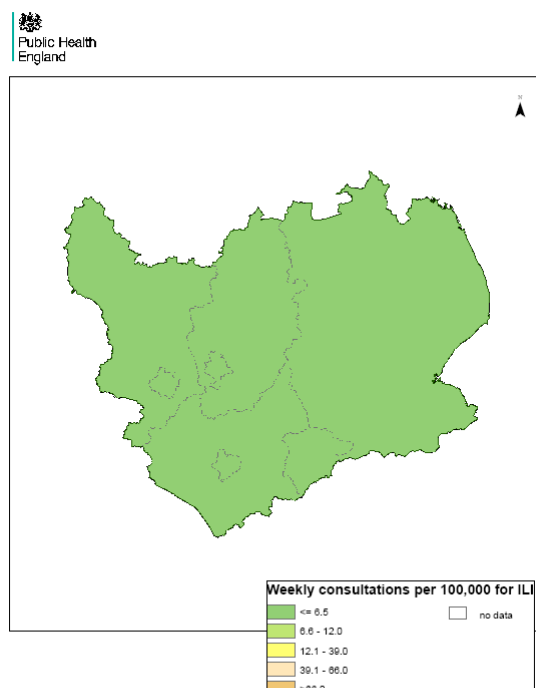
Week 42



Week 43



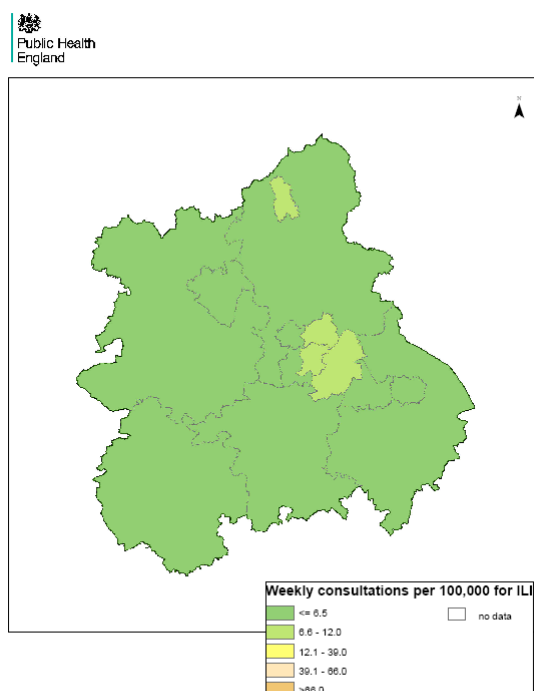
Week 44



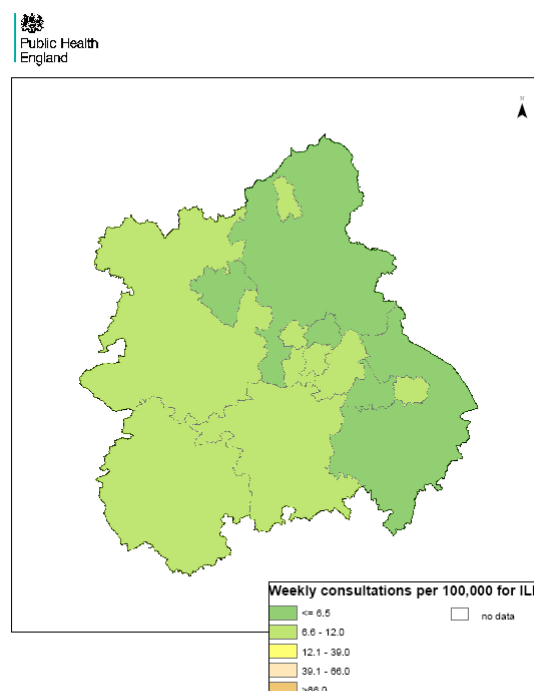
**West
Midlands**

Weekly ILI
consultation
rate by LA
for West
Midlands
PHE Centre

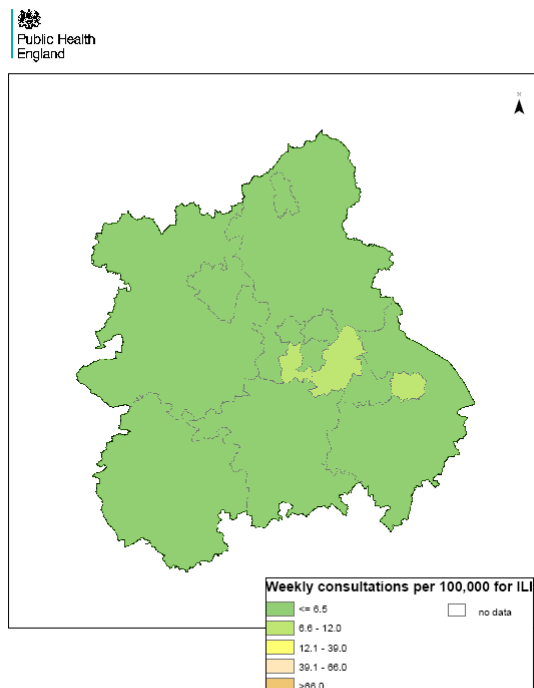
Week 41



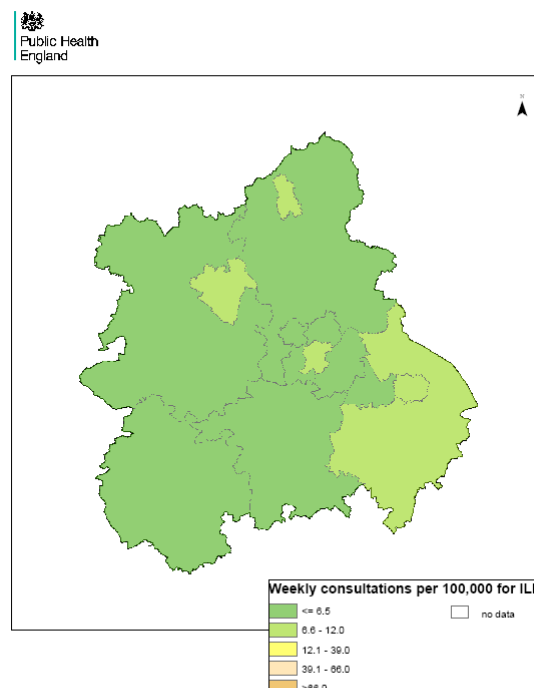
Week 42



Week 43



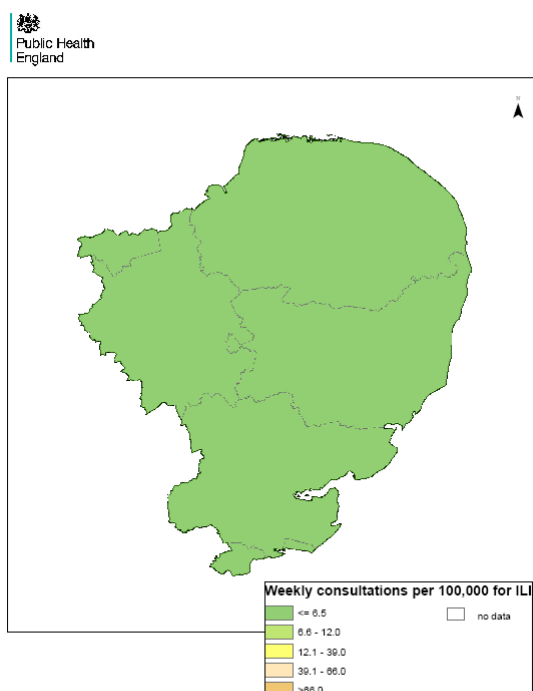
Week 44



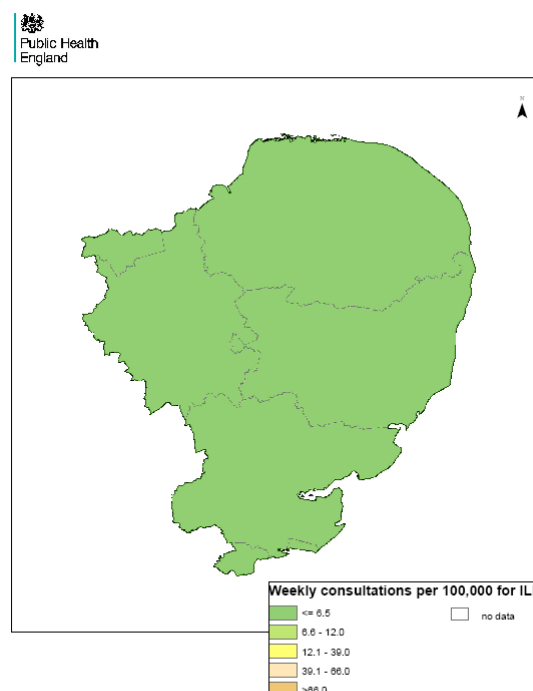
Anglia & Essex

Weekly ILI
consultation
rate by LA
for Anglia &
Essex PHE
Centre

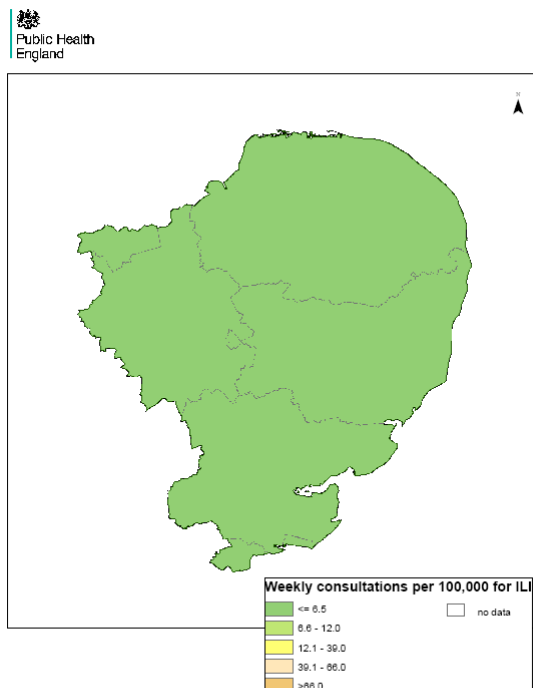
Week 41



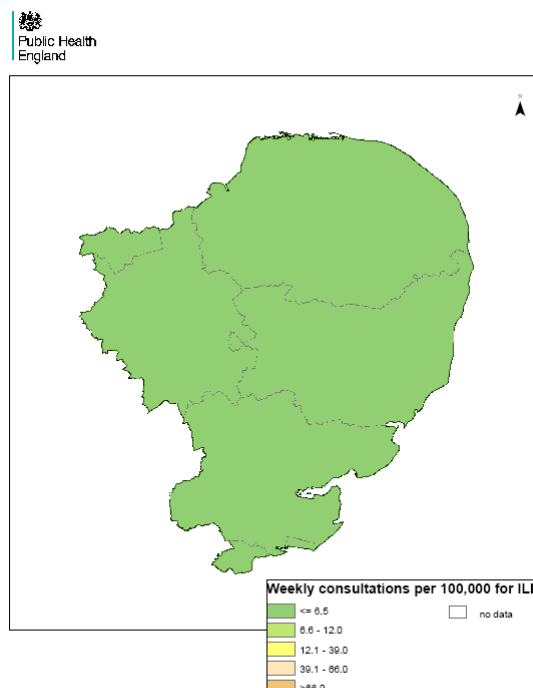
Week 42



Week 43



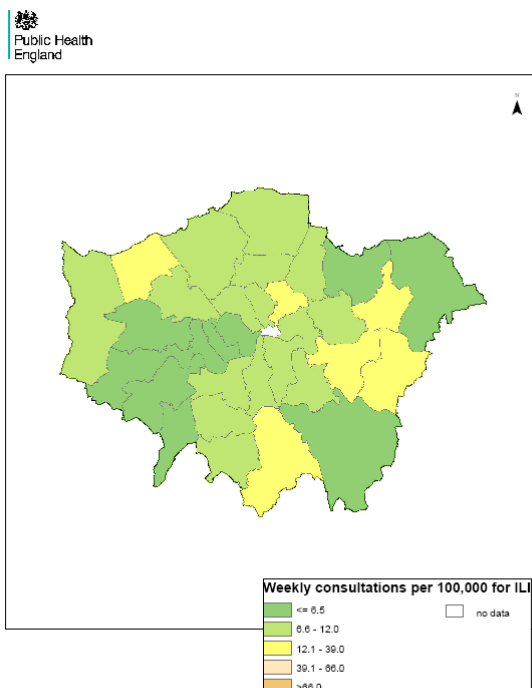
Week 44



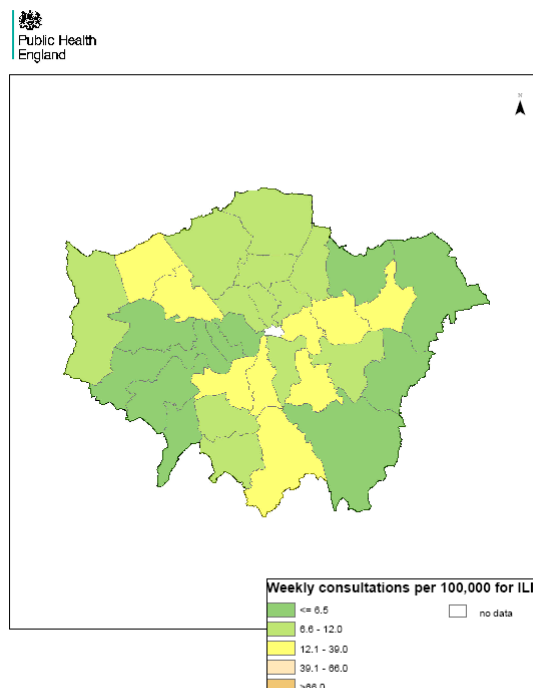
London

Weekly ILI
consultation
rate by LA
for London
PHE Centre

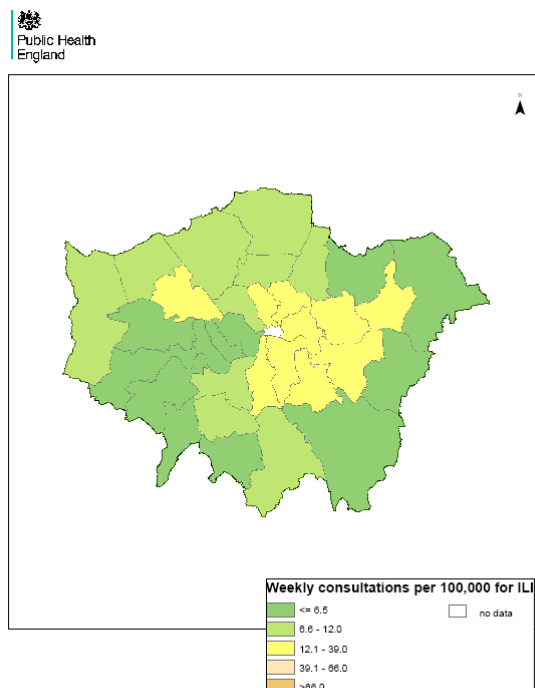
Week 41



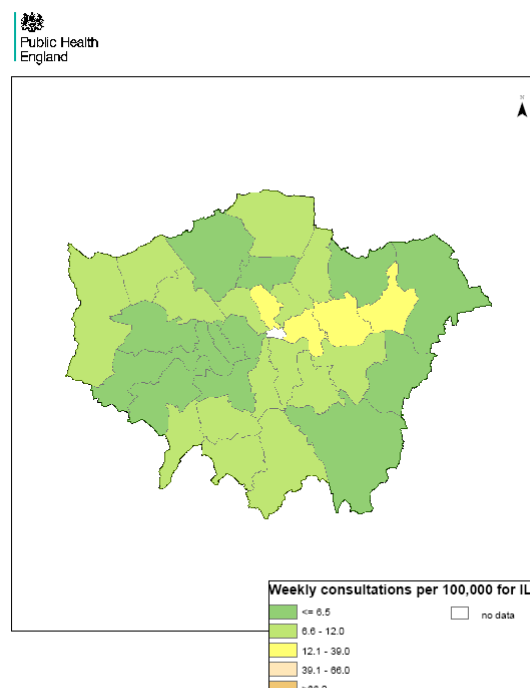
Week 42



Week 43



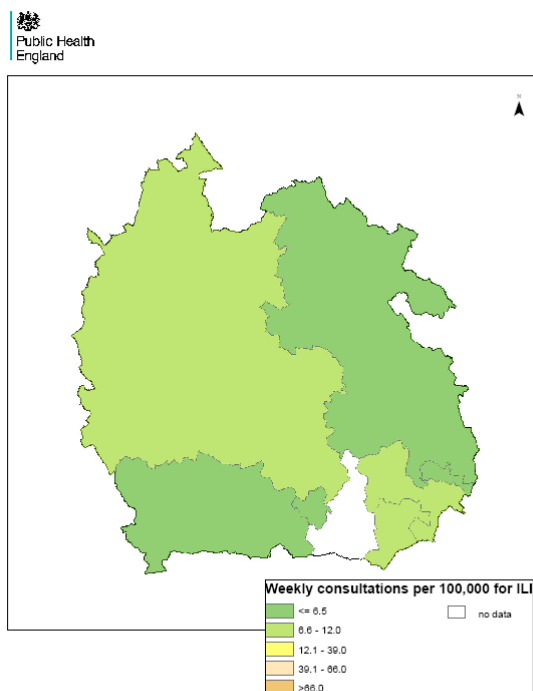
Week 44



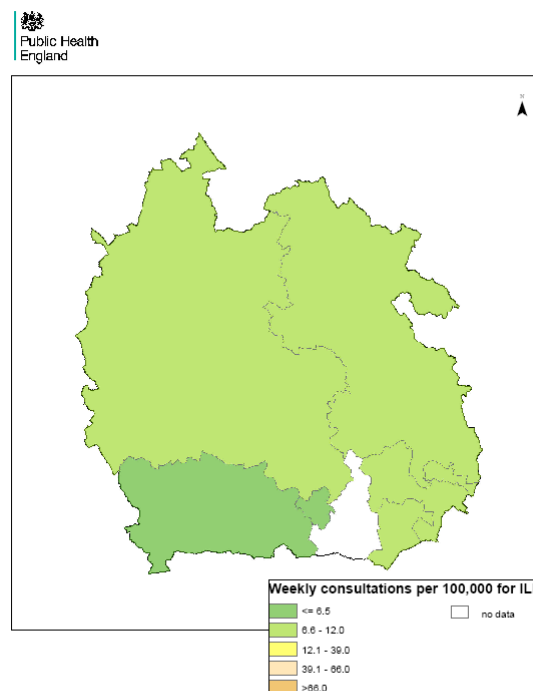
Thames Valley

Weekly ILI
consultation
rate by LA
for Thames
Valley PHE
Centre

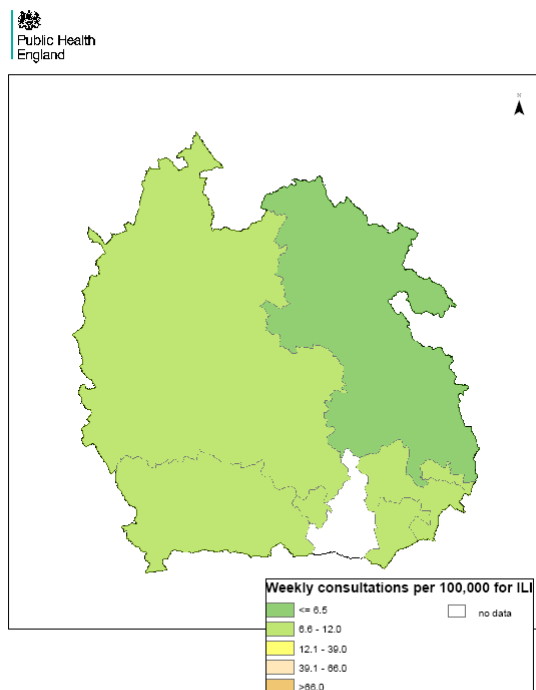
Week 41



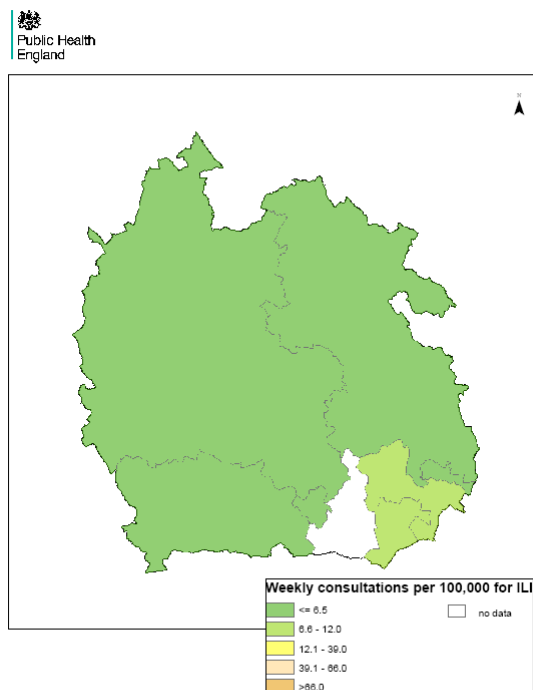
Week 42



Week 43



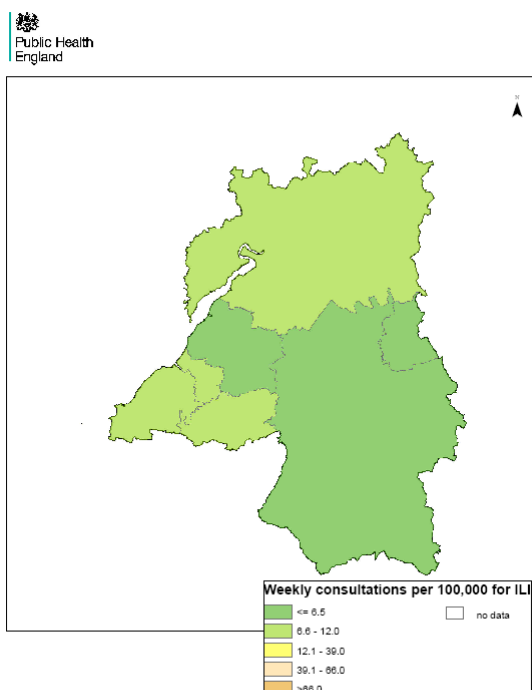
Week 44



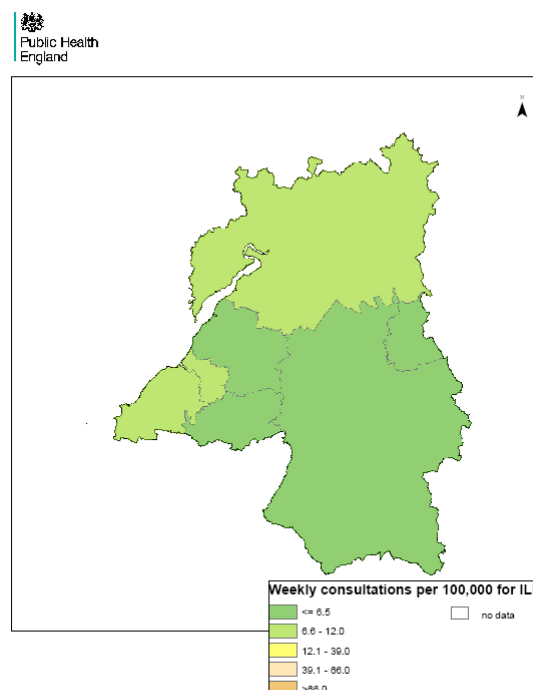
Avon, Gloucestershire & Wiltshire

Weekly ILI
consultation
rate by LA
for Avon,
Gloucestershire
& Wiltshire
PHE Centre

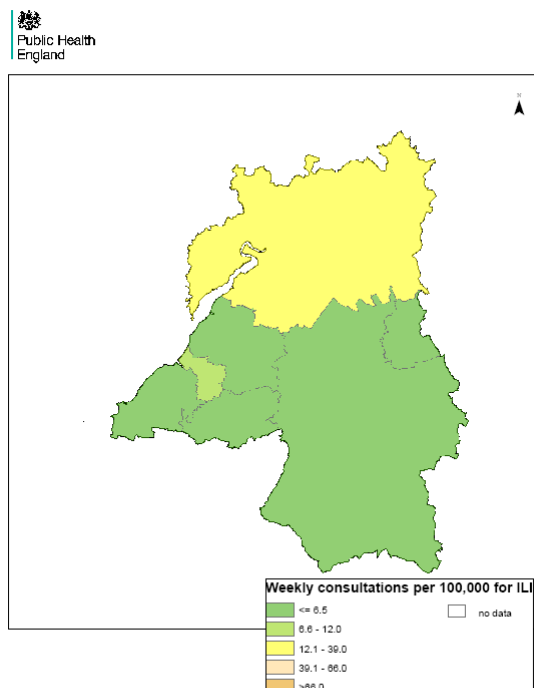
Week 41



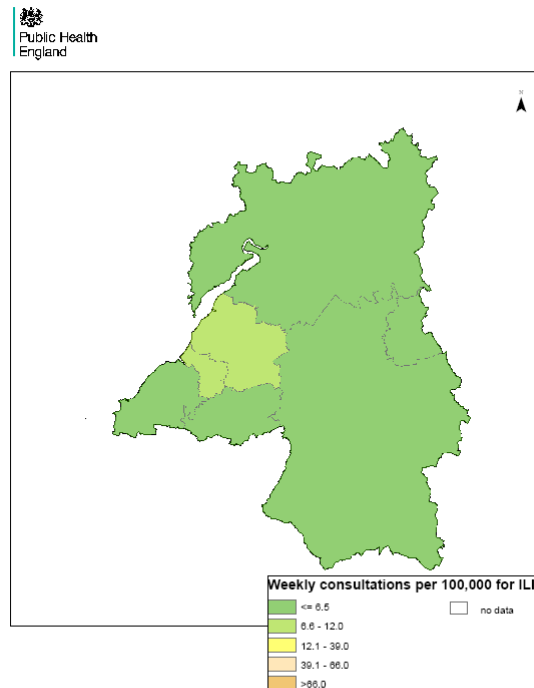
Week 42



Week 43



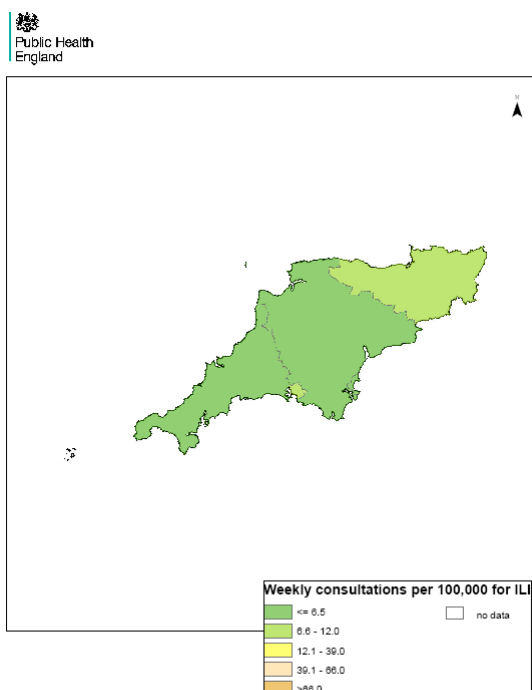
Week 44



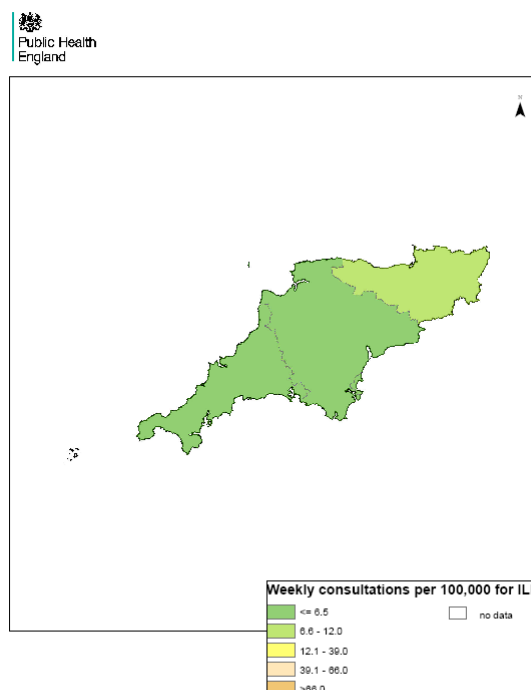
**Devon,
Cornwall &
Somerset**

Weekly ILI
consultation
rate by LA
for Devon,
Cornwall &
Somerset
PHE Centre

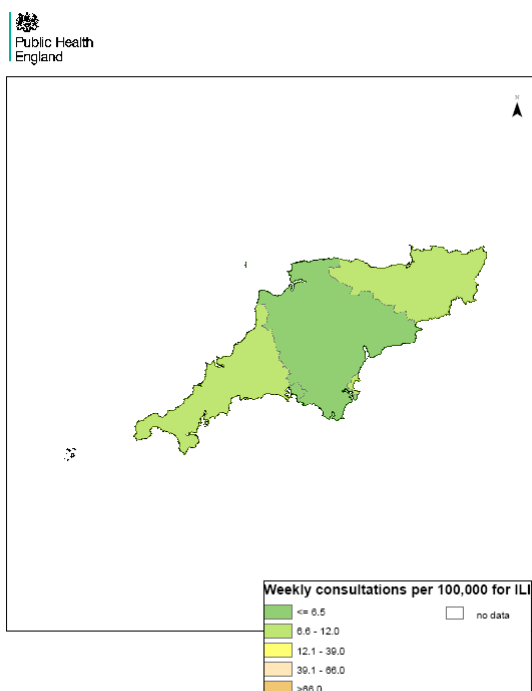
Week 41



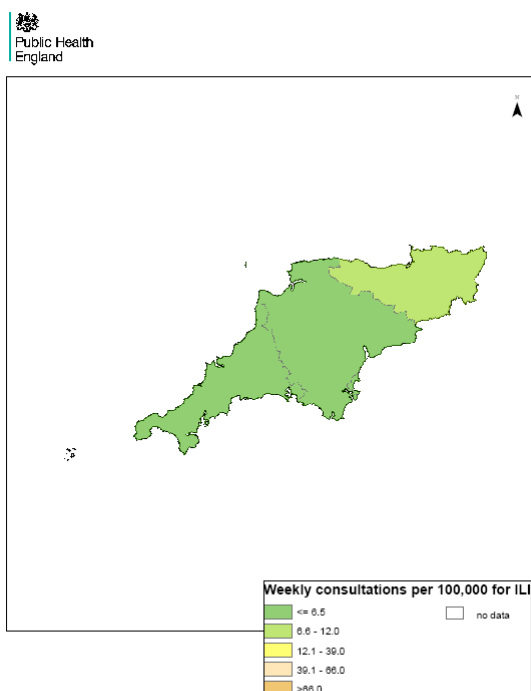
Week 42



Week 43



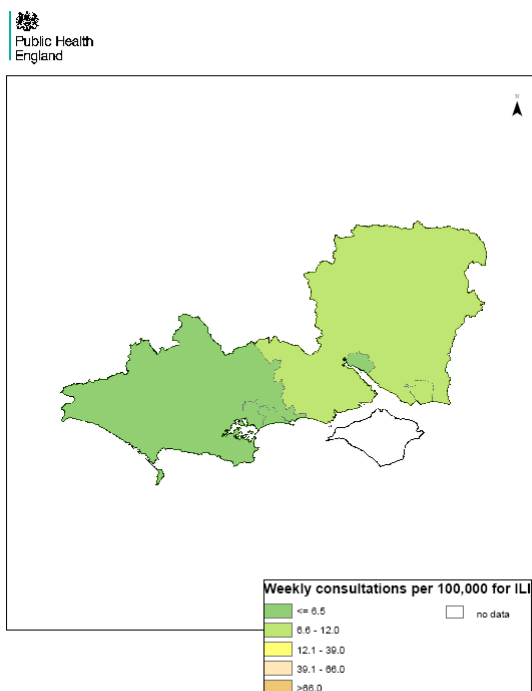
Week 44



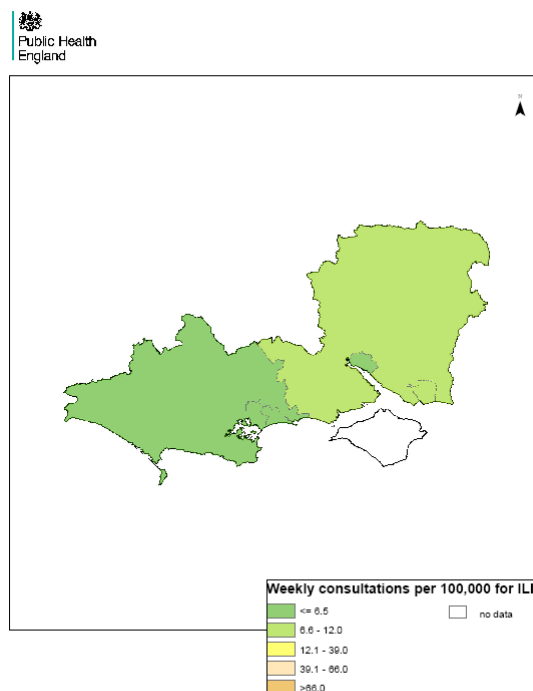
Wessex

Weekly ILI
consultation
rate by LA
for Wessex
PHE Centre

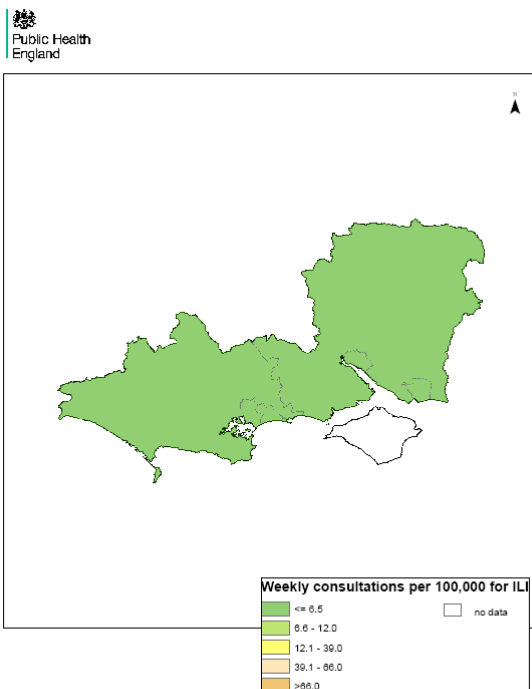
Week 41



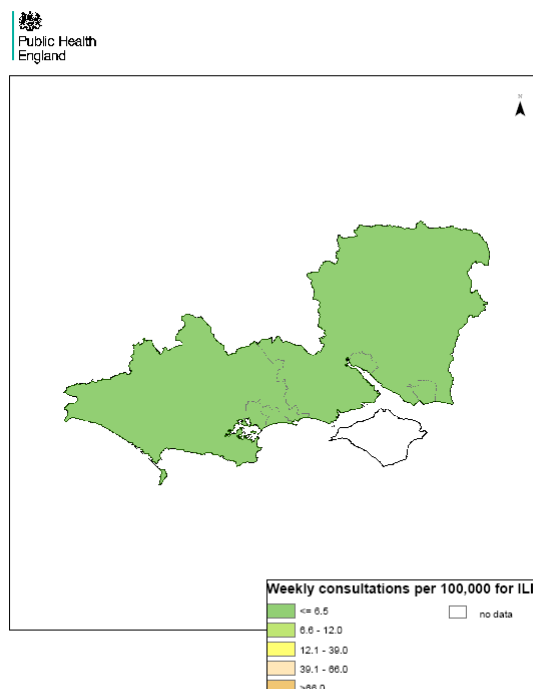
Week 42



Week 43



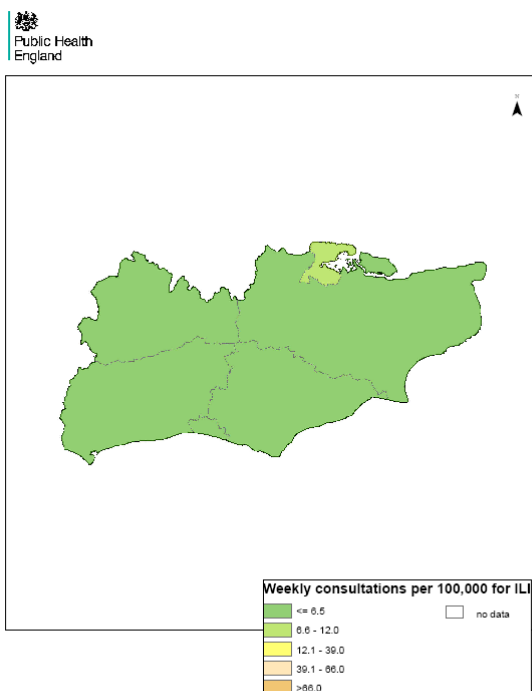
Week 44



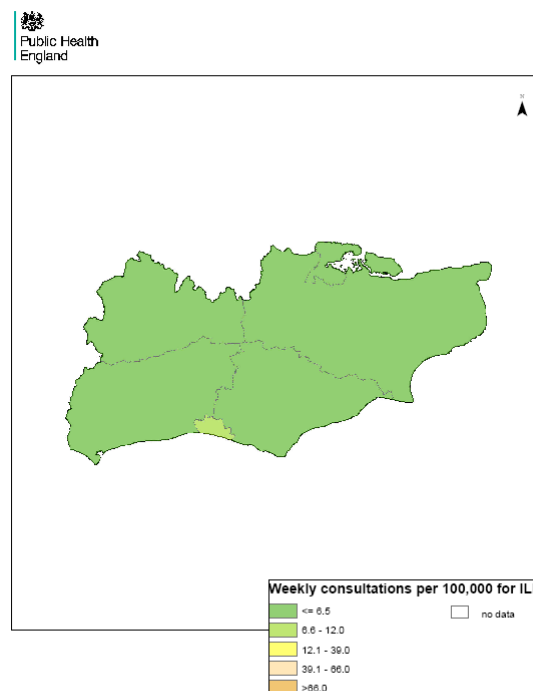
Kent, Surrey & Sussex

Weekly ILI consultation rate by LA for Kent, Surrey & Sussex PHE Centre

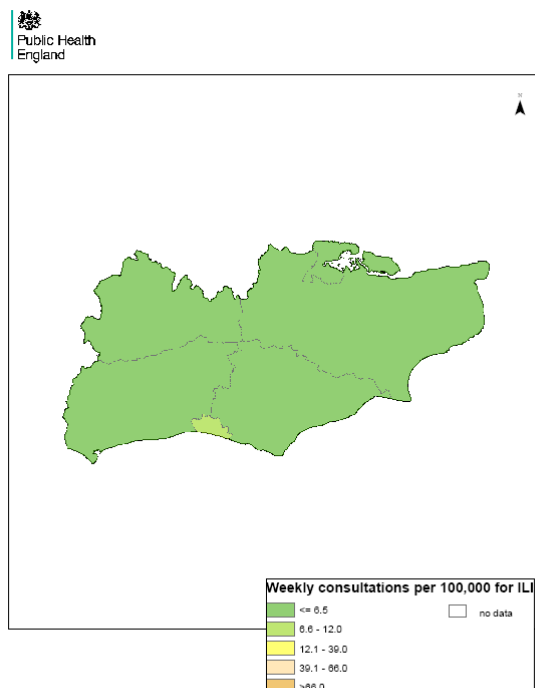
Week 41



Week 42



Week 43



Week 44

