



08 April 2015

Year: 2015 Week: 14

In This Issue:

- Key Messages.
- Weekly summary.
- Total contacts.
- Syndromic indicators.
- Notes and caveats.
- Further information.
- Acknowledgements.

Syndromic indicators at a glance:

Number of contacts and percentage of Read coded contacts.

1: Total out-of-hours contacts:

Daily total number of out-of-hours and unscheduled contacts and 7 day average (adjusted for bank holidays).

Key messages

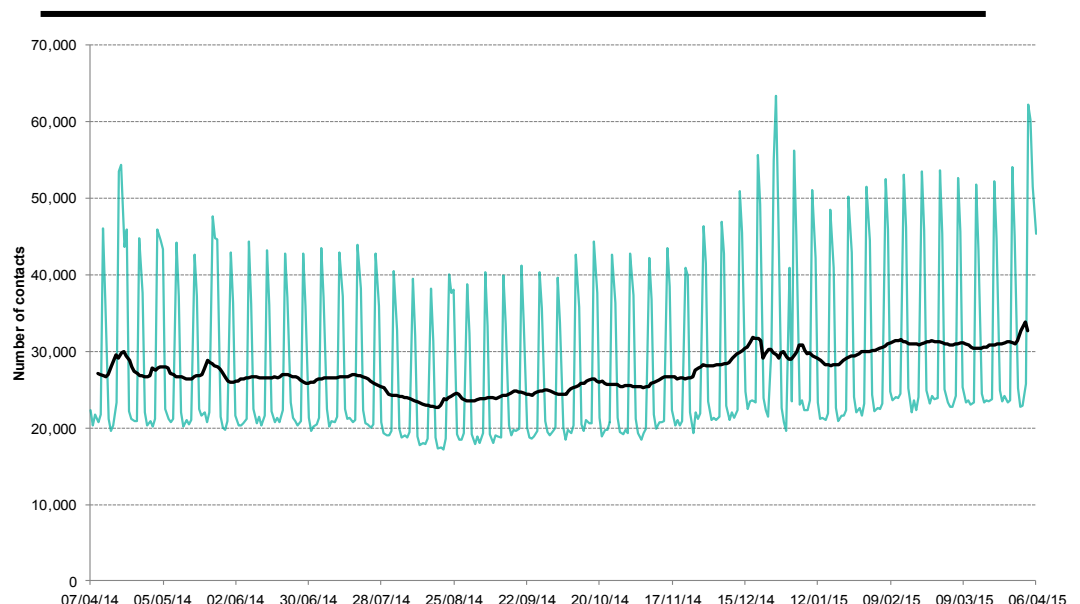
Data to: 06 April 2015

Nothing new to report for week 14.

GP out of hours respiratory consultations remained stable during week 14.

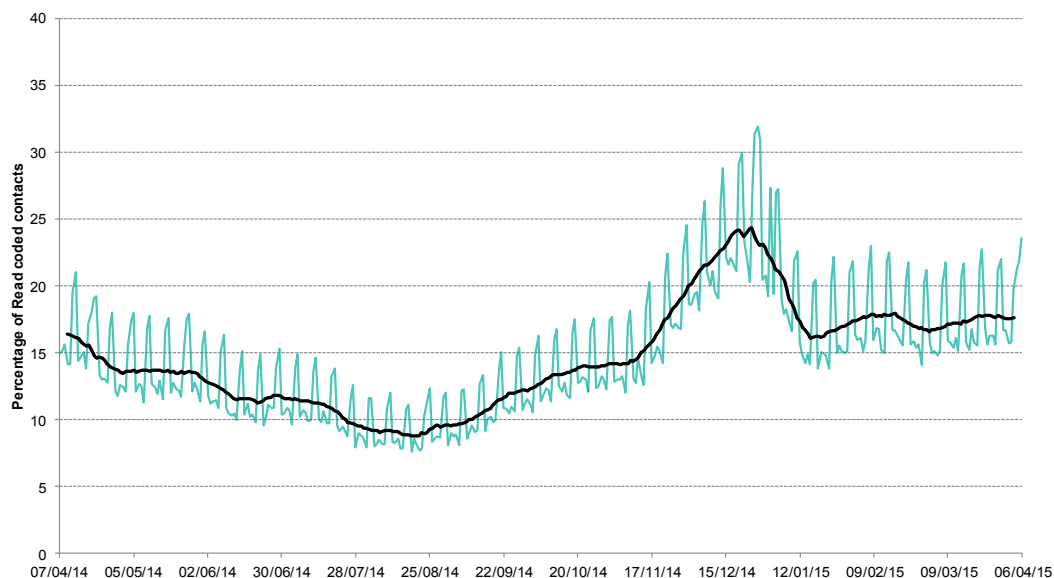
Key indicator	No. of contacts	% Week 14	% Week 13	Trend*
All OOH contacts, all causes	270,659			
Acute respiratory infection	26,167	19.42	18.82	↔
Influenza-like illness	448	0.33	0.34	↔
Bronchitis/bronchiolitis	313	0.23	0.20	↔
Difficulty breathing/wheeze/asthma	2,933	2.18	2.21	↓
Pharyngitis	181	0.13	0.12	↔
Gastroenteritis	6,378	4.73	5.12	↓
Diarrhoea	1,488	1.10	1.12	↔
Vomiting	2,052	1.52	1.73	↓
Myocardial infarction	1,168	0.87	1.09	↓

*Trend: reports on the trend seen over previous weeks in the percentage of Read coded contacts.



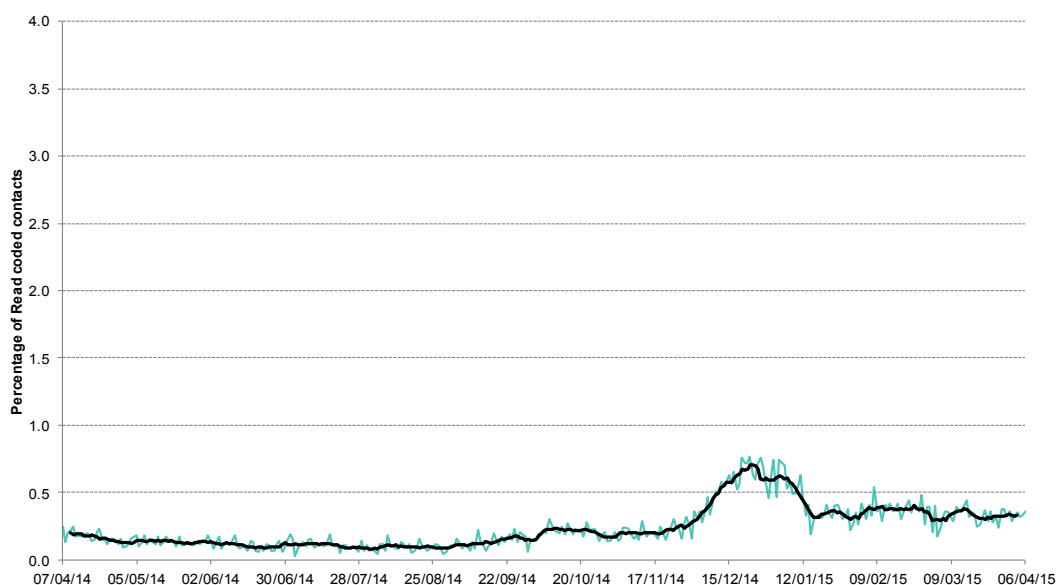
2: Acute Respiratory Infection daily contacts.

Shown as a percentage of the total contacts with a Read code and as a 7 day average*.



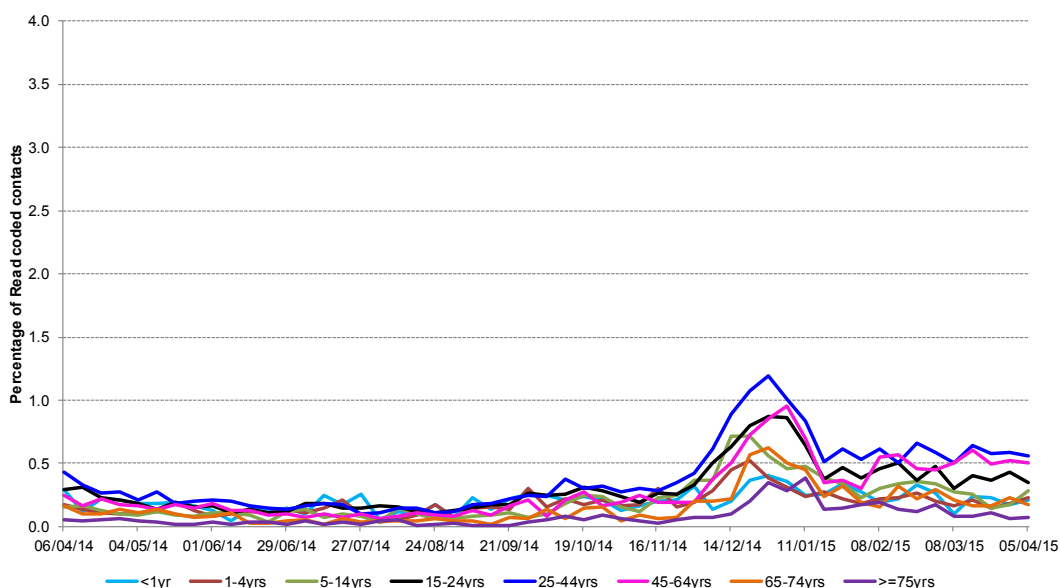
3: Influenza-like illness daily contacts.

Shown as a percentage of the total contacts with a Read code and as a 7 day average*.



3a: Influenza-like illness weekly contacts by age group.

*7-day moving average adjusted for bank holidays.

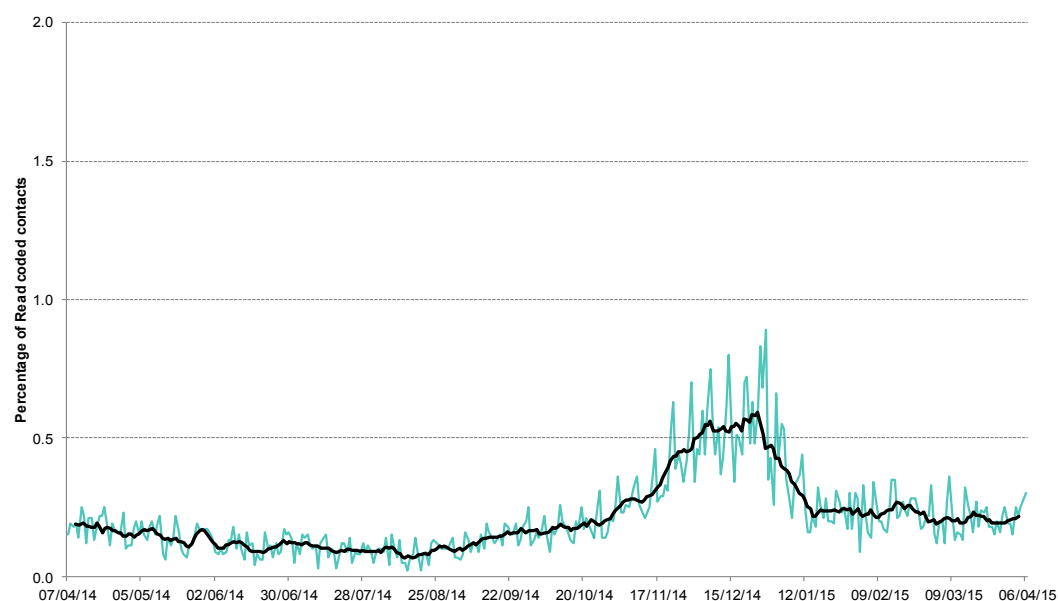


08 April 2015

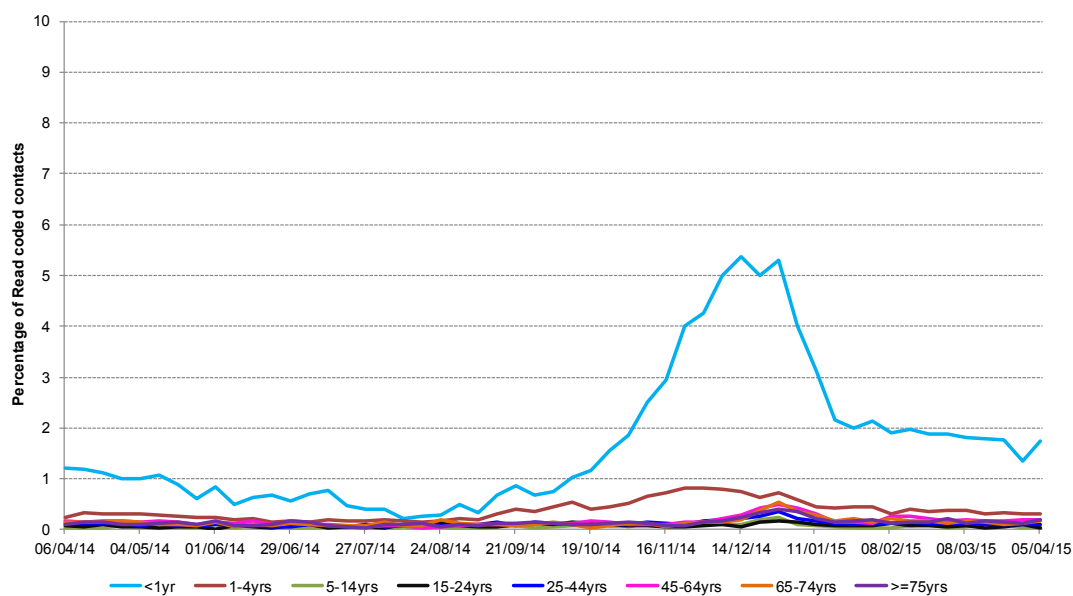
Year: 2015 Week: 14

**4: Bronchitis/
bronchiolitis daily
contacts.**

Shown as a percentage of the total contacts with a Read code and as a 7 day average*.

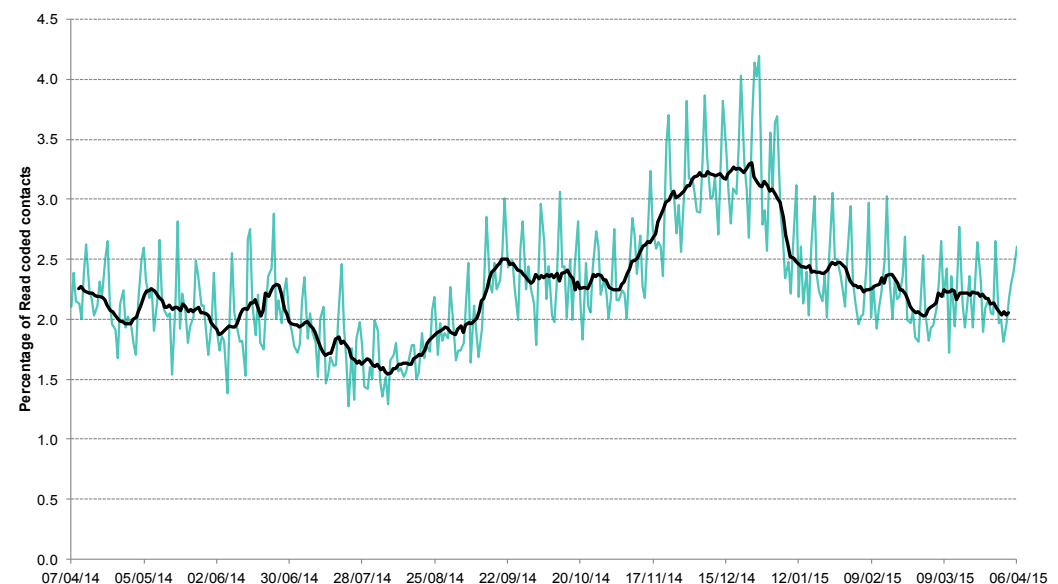


**4a: Bronchitis/
bronchiolitis
weekly contacts by
age group.**



**5: Difficulty
breathing/wheeze/
asthma daily
contacts.**

Shown as a percentage of the total contacts with a Read code and as a 7 day average*.



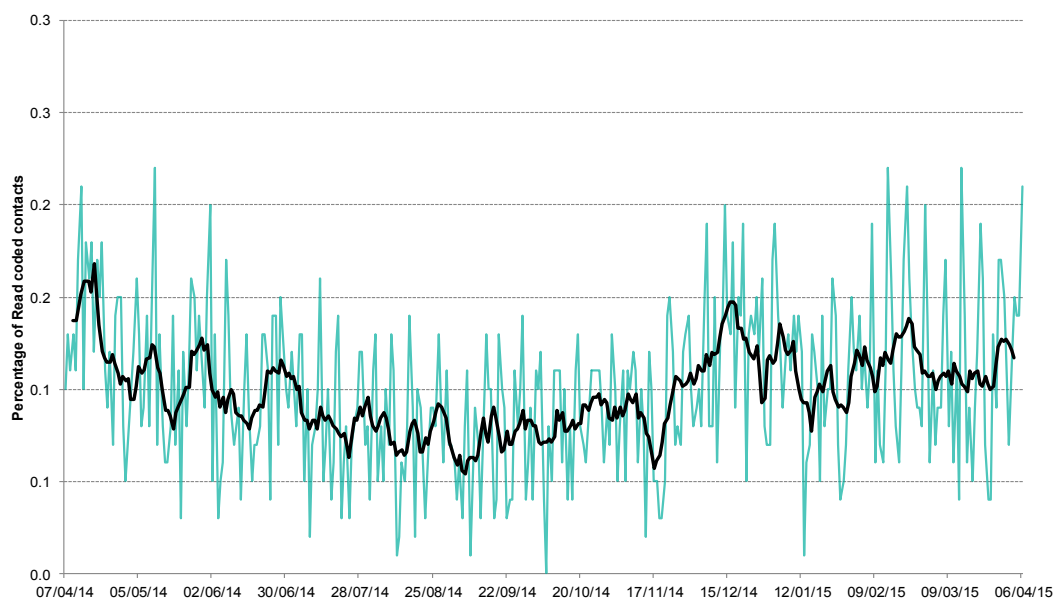
*7-day moving average
adjusted for bank
holidays.

08 April 2015

Year: 2015 Week: 14

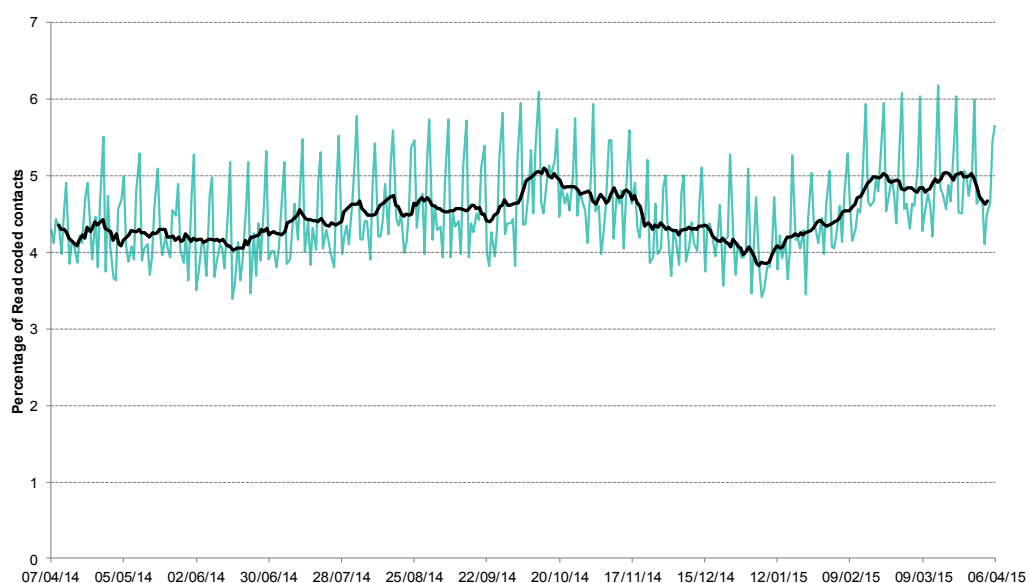
6: Acute pharyngitis and persistent sore throat.

Shown as a percentage of the total contacts with a Read code and as a 7 day average*.



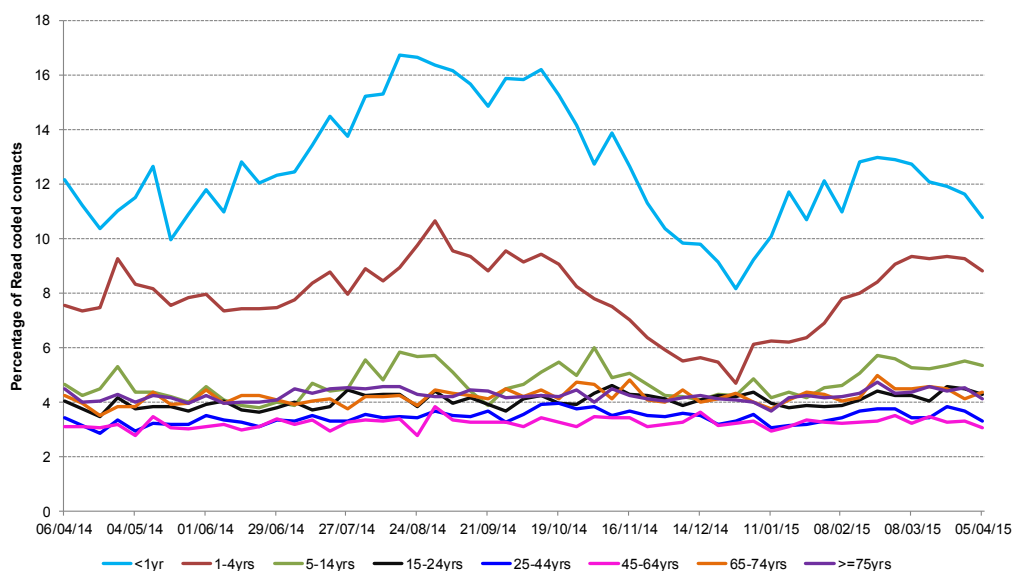
7: Gastroenteritis daily contacts

Shown as a percentage of the total contacts with a Read code and as a 7 day average*.



7a: Gastroenteritis weekly contacts by age group.

*7-day moving average adjusted for bank holidays.

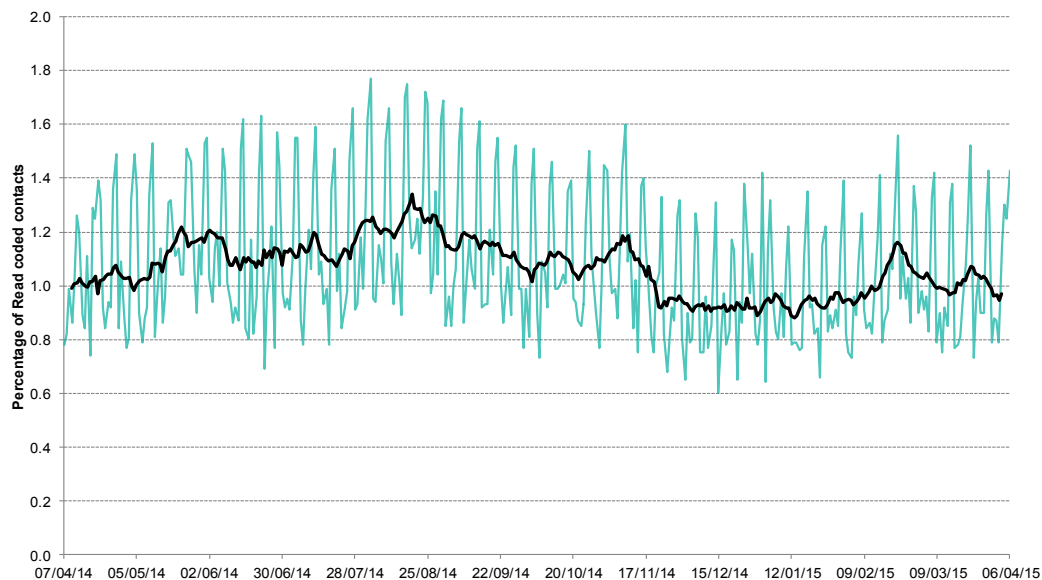


08 April 2015

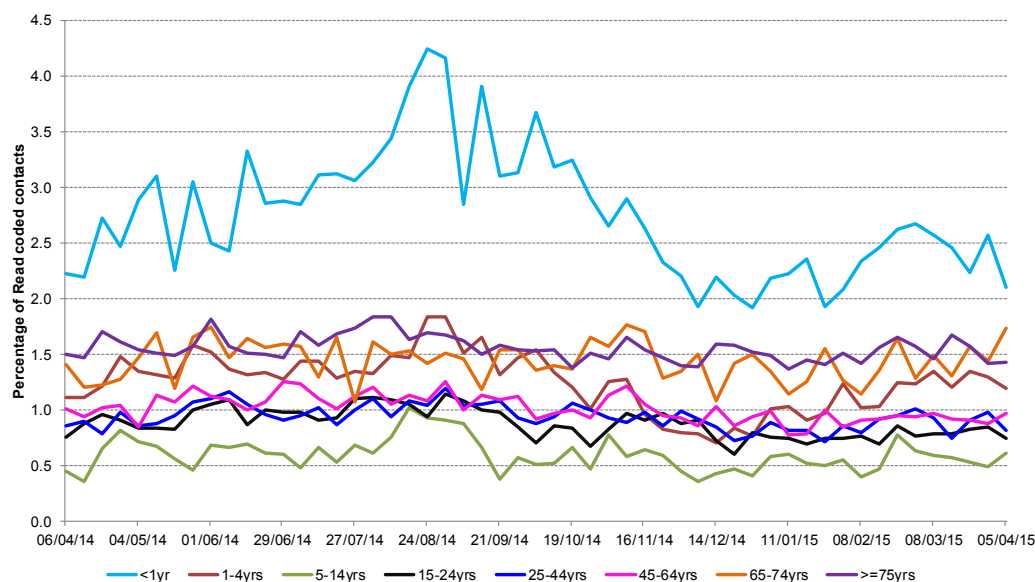
Year: 2015 Week: 14

8: Diarrhoea daily contacts.

Shown as a percentage of the total contacts with a Read code and as a 7 day average*.

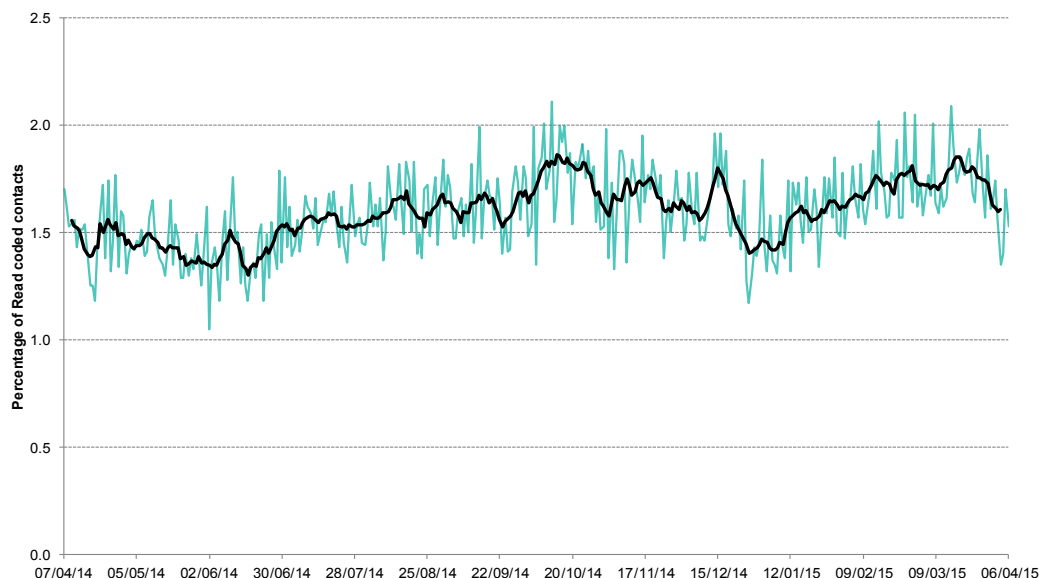


8a: Diarrhoea weekly contacts by age group.



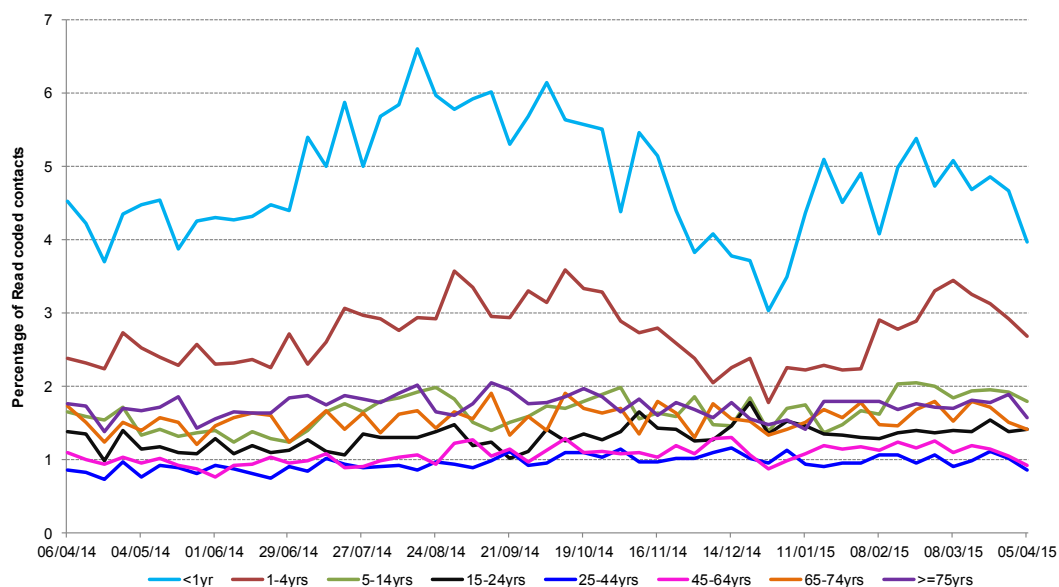
9: Vomiting daily contacts.

Shown as a percentage of the total contacts with a Read code and as a 7 day average*.



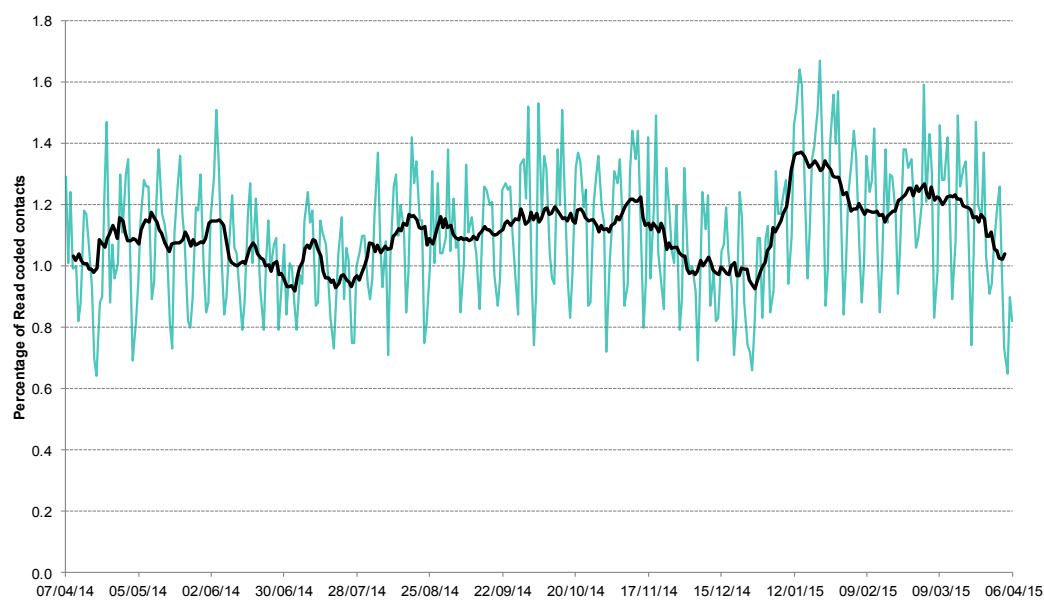
*7-day moving average adjusted for bank holidays.

9a: Vomiting weekly contacts by age group.



10: Myocardial Infarction daily contacts.

Shown as a percentage of the total contacts with a Read code and as a 7 day average*.



11: Intentionally left blank.

*7-day moving average adjusted for bank holidays.

08 April 2015

Year: 2015 Week: 14

Notes and caveats:

- This bulletin presents data from the Public Health England (PHE) GP Out-of-hours\Unscheduled Care Surveillance System (GP OOHSS).
- Fully anonymised data from GP out-of-hours (OOH) and unscheduled care service providers in England are being transferred to the PHE for analysis and interpretation by the PHE Real-time Syndromic Surveillance Team (ReSST).
- This new system supplements existing PHE syndromic surveillance systems by monitoring data on general practitioner consultations outside of routine surgery opening times (evenings, weekends and bank holidays) and unplanned contacts within NHS primary care.
- The key indicators presented within this bulletin are derived by grouping selected Read coded consultations.

Further information:

The GP Out-of-Hours Surveillance System Bulletin can also be downloaded from the PHE Real-time Syndromic Surveillance website which also contains more information about syndromic surveillance:

<https://www.gov.uk/government/collections/syndromic-surveillance-systems-and-analyses>

Acknowledgements:

We are grateful to Advanced Health and Care and the GP out-of-hours and unscheduled care service providers who have kindly agreed to participate in this system.

PHE Out-of-Hours/Unscheduled Care Surveillance

Produced by: PHE Real-time Syndromic Surveillance Team
6th Floor, 5 St Philip's Place, Birmingham, B3 2PW

Tel: 0344 225 3560 > Option 4 > Option 2 **Fax:** 0121 236 2215

Web: <https://www.gov.uk/government/collections/syndromic-surveillance-systems-and-analyses>

Contact ReSST:

[syndromic-surveillance](https://www.gov.uk/government/collections/syndromic-surveillance)
[@phe.gov.uk](mailto:re SST@phe.gov.uk)