

NATURAL ENGLAND

# NO DOGS

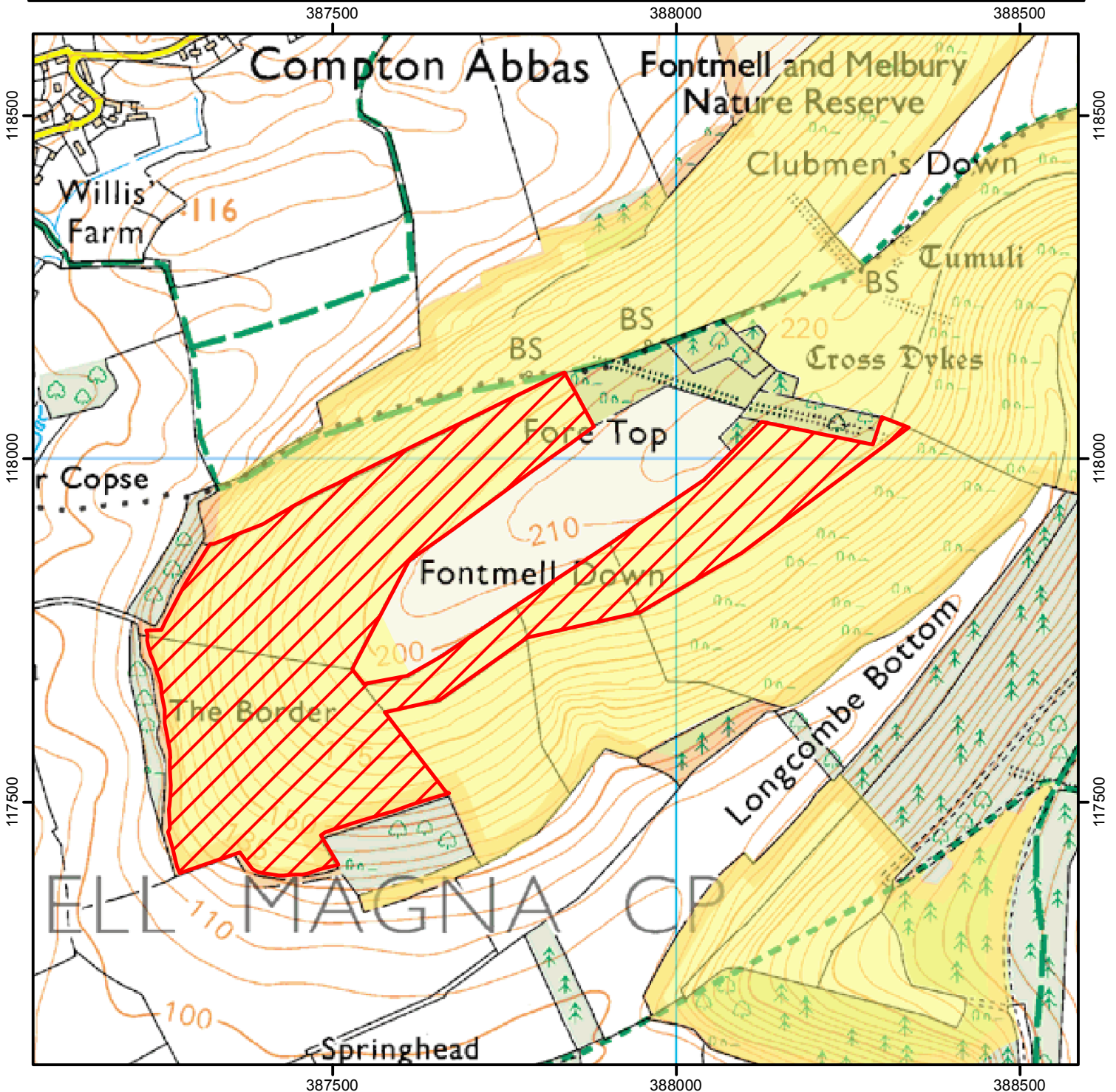


To avoid danger from cows with calves, dogs are not allowed on the area shown hatched on the map below.

This does not affect Public Rights of Way

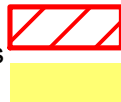
From: 01 September to 31 October annually until 2021

Case Number: 2007050190



0 250 500 Metres

© Crown Copyright and database right 2015. All rights reserved.  
Ordnance Survey Licence number 100022021.



Restricted Open Access Land

Open Access Land



For more information call the Open Access Contact Centre on 0300 060 2091  
or visit our website at [www.gov.uk/right-of-way-open-access-land/use-your-right-to-roam](http://www.gov.uk/right-of-way-open-access-land/use-your-right-to-roam)