

Notes:

Rev	By	Chkd	Apprvd	Date	Description
00					

Client:

Environment Agency

Halcrow Group Limited
 Burdopp Park, Goring-on-Thames, Witney, OX9 2GD
 Tel: +44 (0)1753 812479 Fax: +44 (0)1753 812299
 www.halcrow.com

A CH2M HILL COMPANY

Project:

Marlow
 Flood Alleviation Scheme

Drawing:

Location
 Plan

Drawn by: Daniel Mounsdon Date: 03/10/2013
 Checked by: Jon Holland Date: 03/10/2013
 Approved by: Jon Holland Date: 03/10/2013

Drawing No.	Revision
	00



Notes
1. Do not scale from this drawing.

Legend
● Well Point
— Permanent discharge main

SAFETY HEALTH AND ENVIRONMENTAL INFORMATION
IN ADDITION TO THE HAZARDS/RISKS NORMALLY ASSOCIATED WITH THE TYPES OF WORK DETAILED ON THIS DRAWING, NOTE THE FOLLOWING SIGNIFICANT RESIDUAL RISKS:-

CONSTRUCTION

1. Leptospirosis – Weil's Disease
2. Concrete works – alkali burns
3. Manual handling
4. Clearing woodland of hazardous refuse (sharp metal etc)
5. Instability of excavations
6. Groundwater in excavations (drowning)
7. Hot works
8. Hand arm vibration syndrome
9. Poor access
10. Underground electric cable at chainage 0m to chainage 10m
11. Water and electricity (electrocution)
12. Flood kerbs 900mm unit 13Kg

MAINTENANCE / CLEANING / OPERATION

1. Manual handling
2. Water and electricity (electrocution)
3. Working in flood situation (drowning)

DECOMMISSIONING / DEMOLITION

1. Manual handling
2. Poor access
3. Hand arm vibration
4. Leptospirosis

Rev	By	Chkd	Apprvd	Date	Description
C	GS	WK	JH	14.09.09	Planning Application
B	GS	WK	SYK	11.07.09	Groundwater system added
A	GS		SYK	18.02.09	
0	WF	RLG	SYK	18.02.09	For Consultation

Client: **Environment Agency**

Halcrow Group Limited
Burdens Park, Swindon, Wiltshire SN4 0GD
Tel +44 (0)1793 812479 Fax +44 (0)1793 812089
www.halcrow.com

Project: **Marlow Flood Alleviation Scheme**

Drawing: **Firview Close & Gossmore Lane Area**

REACH	STRUCTURE	LENGTH (m)	MEAN HEIGHT (m)	MAXIMUM HEIGHT(m)
AB	MISC. ACCESS STRUCTURES	—	—	—
BC	FLOOD BUND	170	1.35	1.6
CD	FLOOD WALL	125	1.5	1.7
DE	SHEET PILE WALL	85	1.2	1.9
EG	GROUND RAISING	—	0.4	0.7
GH	ROAD HUMP AND HEADWALL	—	—	—
JK	RAISED ROAD	50m	0.4	0.8

Drawn by: WF Date: 19.02.09
Checked by: RLG Date: 19.02.09
Approved by: SYK Date: 19.02.09

Drawing No. **WNLDC-101** Revision **C**

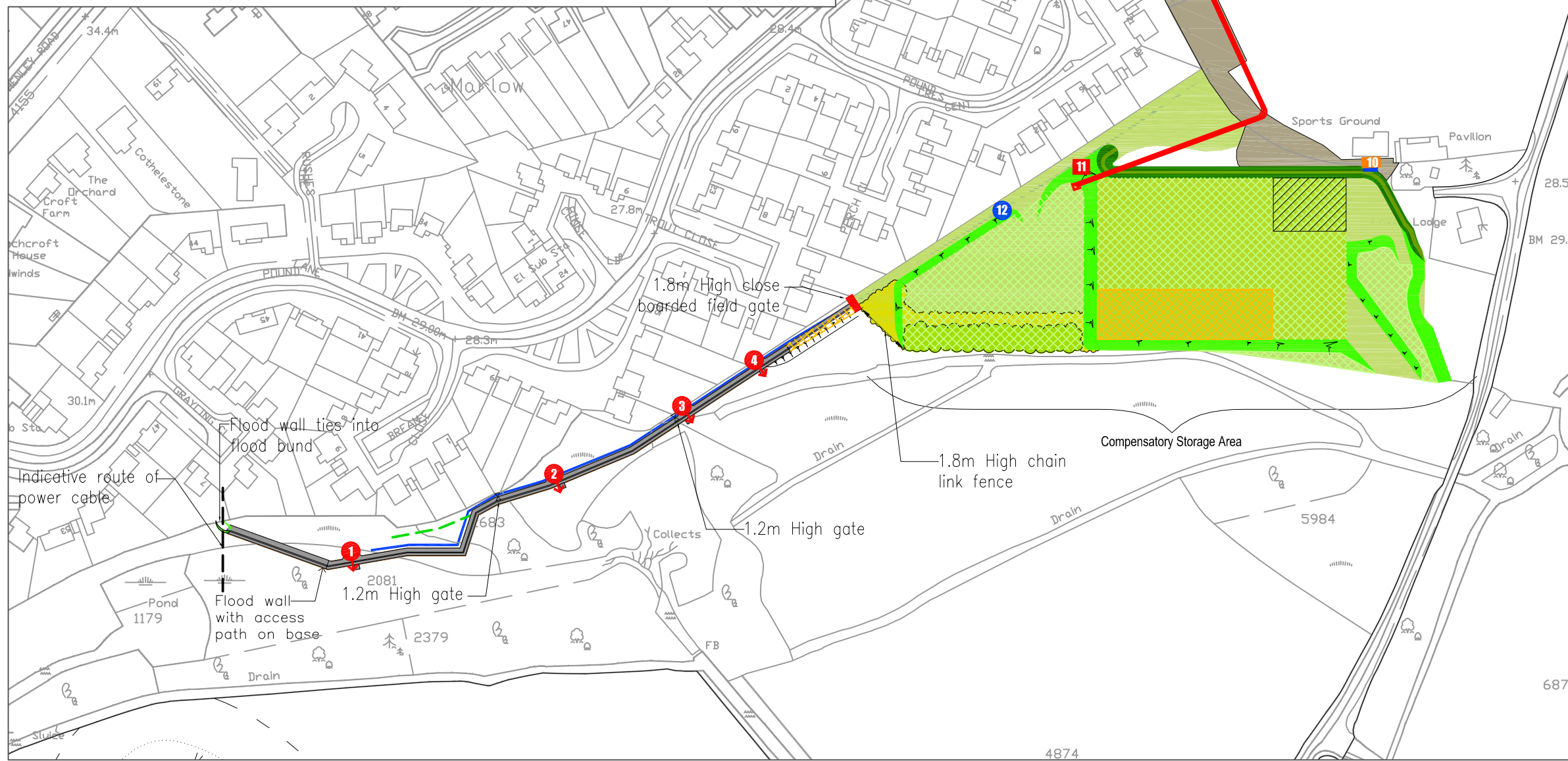
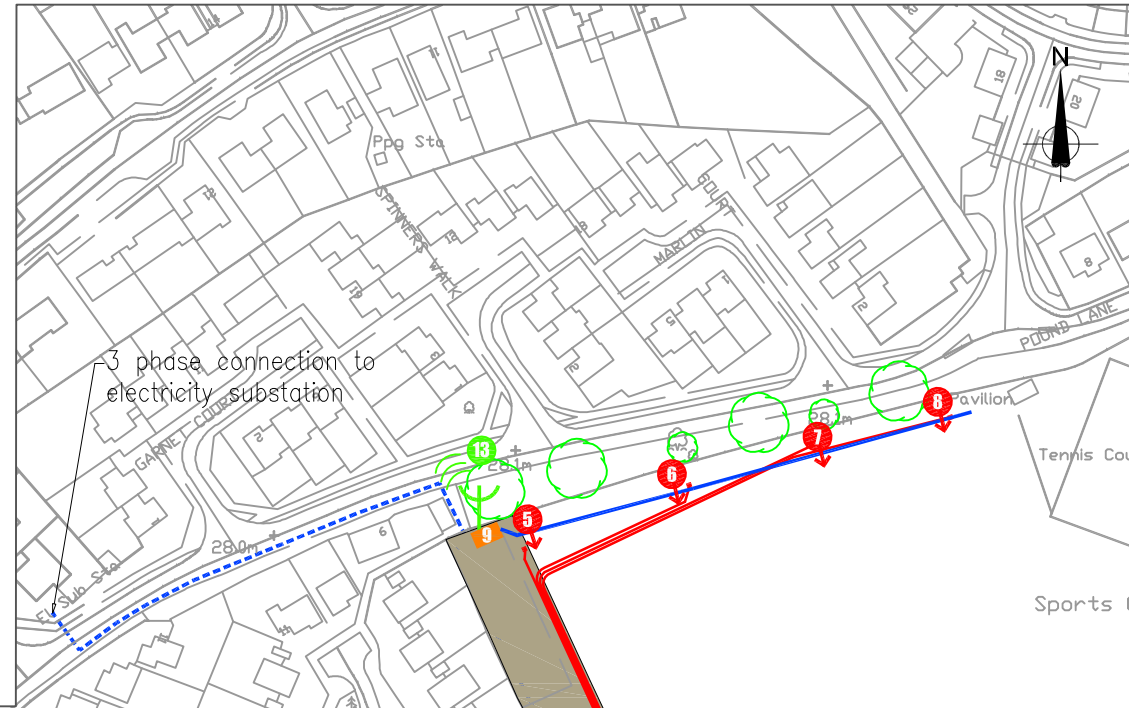
Drawing Scale: As shown at A1

PLANNING APPLICATION

GENERAL ARRANGEMENT
Scale 1:1000 @ A1
Scale 1:2000 @ A3

Drawing file path & name : W:\Projects\WNLDC\Marlow\FAS\CAD\CD\DrawNEW\FAS\CAD\CD\DrawNEW\CAD\Selection ES Drawings\Latest Drawings\0909_WNLDC_101_CD.dwg User and Plot Date : Kempshall : 23 Sep 2009 - 9:40 am

Component No.	Description
1-4	Submersible Flygt 2640 dewatering pump, local discharge fixed into wall head
5-8	Submersible Flygt 2640 dewatering pump, piped discharge
9	Secure kiosk for switch gear, generator hook up, monitoring and control equipment.
10	Secure storage container for pumps and associated equipment
11	Grasscrete discharge pad
12	Armoured power cables in ducts from main incomer to lockable, waterproof hook up cabinets at each pump location.
13	Radio or hardwired telemetry to off site monitoring station
	Ground lowered in this area
	Ground raised in this area



Notes:

- All dimensions in millimetres unless otherwise stated.
- All levels are in metres O.D. (Newlyn).
- Underground HVC at chainage 0m to 10m.

SAFETY HEALTH AND ENVIRONMENTAL INFORMATION	
IN ADDITION TO THE HAZARDS/RISKS NORMALLY ASSOCIATED WITH THE TYPES OF WORK DETAILED ON THIS DRAWING, NOTE THE FOLLOWING SIGNIFICANT RESIDUAL RISKS:-	
CONSTRUCTION	<ol style="list-style-type: none"> Leptospirosis - Weil's Disease Concrete works - alkali burns Manual handling Clearing woodland of hazardous refuse (sharp metal etc) Instability of excavations Groundwater in excavations (drowning) Hot works Hand arm vibration syndrome Poor access Underground electric cable at chainage 0m to chainage 10m Water and electricity (electrocution)
MAINTENANCE / CLEANING / OPERATION	<ol style="list-style-type: none"> Manual handling Water and electricity (electrocution) Working in flood situation (drowning)
DECOMMISSIONING / DEMOLITION	<ol style="list-style-type: none"> Manual handling Poor access Hand arm vibration Leptospirosis

Rev	By	Chkd	Apprvd	Date	Description
D	GZS	MK	JH	07.12.09	Fence changed to 1.8m High and gates added
C	GZS	MK	JH	17.09.09	Planning Application
B	GZS	MK	JH	17.07.09	Updated Working Consultation
A	GZS			16.06.09	Planning Application Issue
0	WF	RLG	SYK	18.02.09	Planning Application Issue

Client: Environment Agency

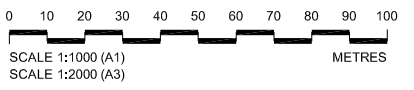
Halcrow Group Limited
 Burdette Park, Snettisham, Wiltshire, SN4 0GD
 Tel: +44 (0) 1793 812479 & Fax +44 (0) 1793 812089
 www.halcrow.com

Project: **Marlow Flood Alleviation Scheme**

Drawing: **Outline Schematic of Proposal (Pound Lane Area)**

Drawn by: WVF Date: 19.02.09
 Checked by: RLG Date: 19.02.09
 Approved by: SYK Date: 19.02.09

Drawing No: **WNGLDC-201** Revision: **D**



Outline Schematic of Proposal
 SCALE 1:1000 @ A1
 SCALE 1:2000 @ A3

PLANNING APPLICATION

Drawing file path & name: W:\Projects\WNGLDC\Marlow\FAS\CAD\GD\Drawings\ES\Drawings\Latest\Drawing 0609\WNGLDC_201_P01.dwg
 Reference file path: W:\Projects\WNGLDC\Marlow\FAS\CAD\GD\Drawings\ES\Drawings\Latest\Drawing 0609