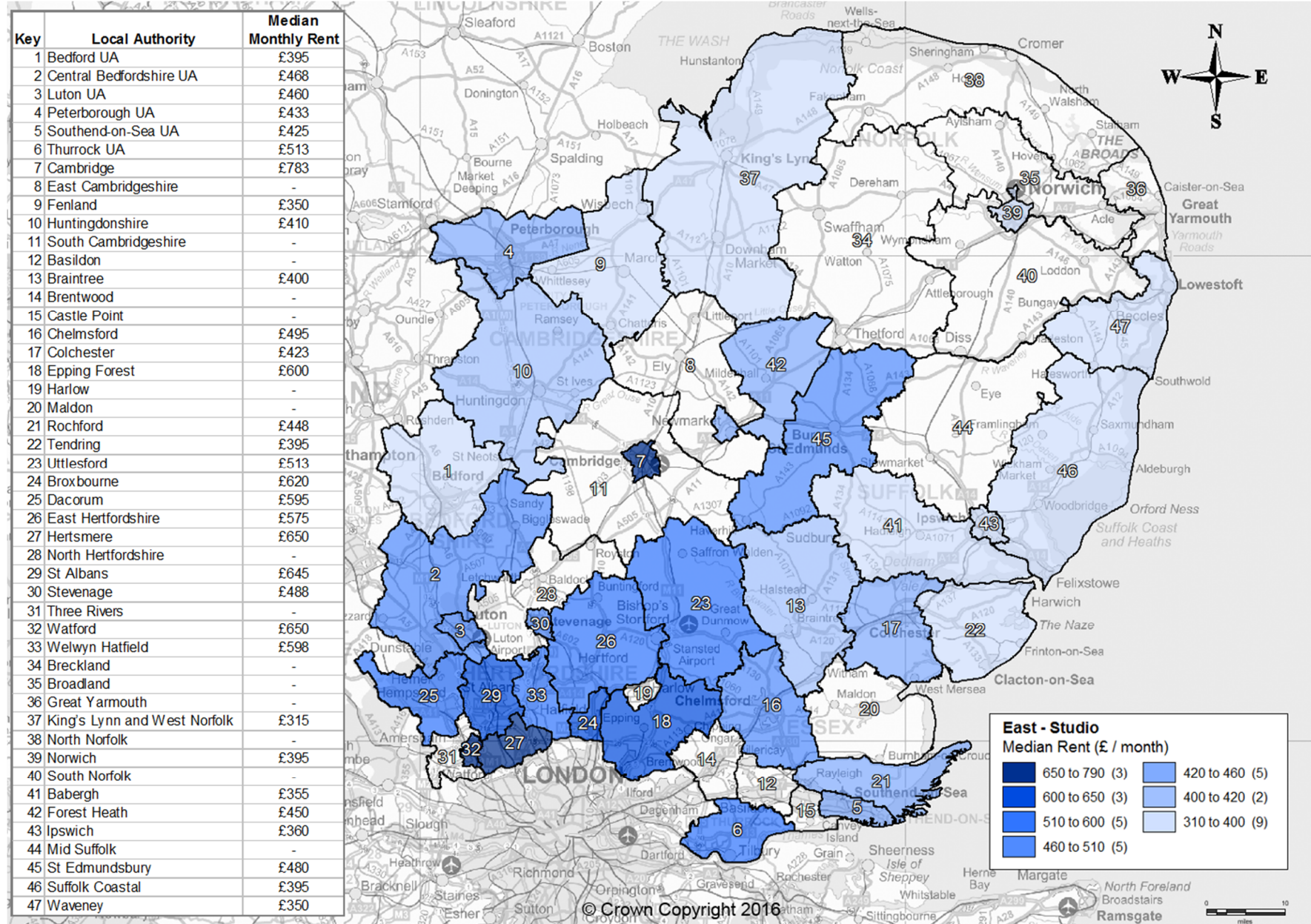


## Private Rental Market Summary Statistics, 'Studio' monthly rents recorded between 1 October 2014 and 30 September 2015 for East



Statistics derived from fewer than 10 observations have been suppressed and denoted by '-'. The data used to generate these statistics are based on a sample of rental information, collected by Rent Officers from landlords and letting agents. The composition of this sample changes over time therefore it is not possible to compare median rents provided in this publication with statistics in previous publications to infer trends in the rental market over time. Any differences in median rent may be due to differences in the sample rather than true changes in the rental market

The full range of statistics and methodology can be found at: <https://www.gov.uk/government/statistics/private-rental-market-summary-statistics-england-2014-15>