



Marine
Management
Organisation

Sustainability Appraisal Scoping Report

**North East Inshore and Offshore
North West Inshore and Offshore
South East Inshore
South West Inshore and Offshore
Marine Plans**

Map Annex

Post Consultation

June 2016



Marine
Management
Organisation

Sustainability Appraisal Scoping Report (North East Inshore and Offshore, North West Inshore and Offshore, South West Inshore and Offshore and South East Inshore Marine Plans)

Post Consultation

Map Annex

June 2016

Report prepared by: Ramboll Environ, Marine Planning Consultants and ClearLead Consulting Ltd.



Project funded by: Marine Management Organisation

Version	Author	Note
2.0	Emma Jones	Final report

© Marine Management Organisation 2016

You may use and re-use the information featured on this website (not including logos) free of charge in any format or medium, under the terms of the Open Government Licence. Visit www.nationalarchives.gov.uk/doc/open-government-licence/ to view the licence or write to:

Information Policy Team
The National Archives
Kew
London
TW9 4DU
Email: psi@nationalarchives.gsi.gov.uk

Information about this publication and further copies are available from:

Marine Management Organisation
Lancaster House
Hampshire Court
Newcastle upon Tyne
NE4 7YH

Tel: 0300 123 1032
Email: info@marinemanagement.org.uk
Website: www.gov.uk/mmo

If referencing this document, please cite it as: MMO (2016) Marine Plan Areas Sustainability Appraisal Scoping Report. Post Consultation Map Annex. A report produced for the Marine Management Organisation

1. Introduction

The Marine Management Organisation (MMO) is currently preparing the North East Inshore and Offshore, North West Inshore and Offshore, South East Inshore and South West Inshore and Offshore mEnglish marine plans. These will set out how the UK Marine Policy Statement will be implemented in these plan areas.

The marine plans will be subject to an integrated Sustainability Appraisal (hereafter referred to as SA) and Strategic Environmental Assessment (SEA) in line with the requirements of Statutory Instrument 2004 No. 1633: The Environmental Assessment of Plans and Programmes Regulations 2004.

A SA scoping report has been produced which provides baseline information on the environmental, social and economic characteristics of the marine plan areas. This map annex forms part of that scoping report and has been prepared by Ramboll Environ, Marine Planning Consultants and ClearLead Consulting Ltd on behalf of the MMO.

If you have any queries relating to this report or the marine planning process, please contact the Marine Planning Team planning@marinemanagement.org.uk

This annex includes a selection of mapped data that helps to set the context for the SA, helps readers to interpret the baseline database and will also be used to inform the appraisal of the marine plans. The maps that have been produced are a sample of the range of maps that are available from the MMO and other sources. Please note that this Annex is not meant to be comprehensive. The MMO (and others) hold a large amount of mapped data. The MMO data is outlined in the [Master Data Register](#) and within the [Marine Planning Evidence Base](#). Because of the availability of the Marine Planning Evidence Base (which is kept updated and is publicly available) it has not been necessary to reproduce comprehensive baseline maps for the SA scoping report.



Figure 1.1: Marine Plan Areas

Coordinate System: GCS ETRS 1989 Not to be used for navigation.

- Marine Plan Areas
- 1 - North East inshore
- 2 - North East offshore
- 3 - East inshore (not included as part of this report)
- 4 - East offshore (not included as part of this report)
- 5 - South East inshore
- 6 - South inshore (not included as part of this report)
- 7 - South offshore (not included as part of this report)
- 8 - South West inshore
- 9 - South West offshore
- 10 - North West inshore
- 11 - North West offshore

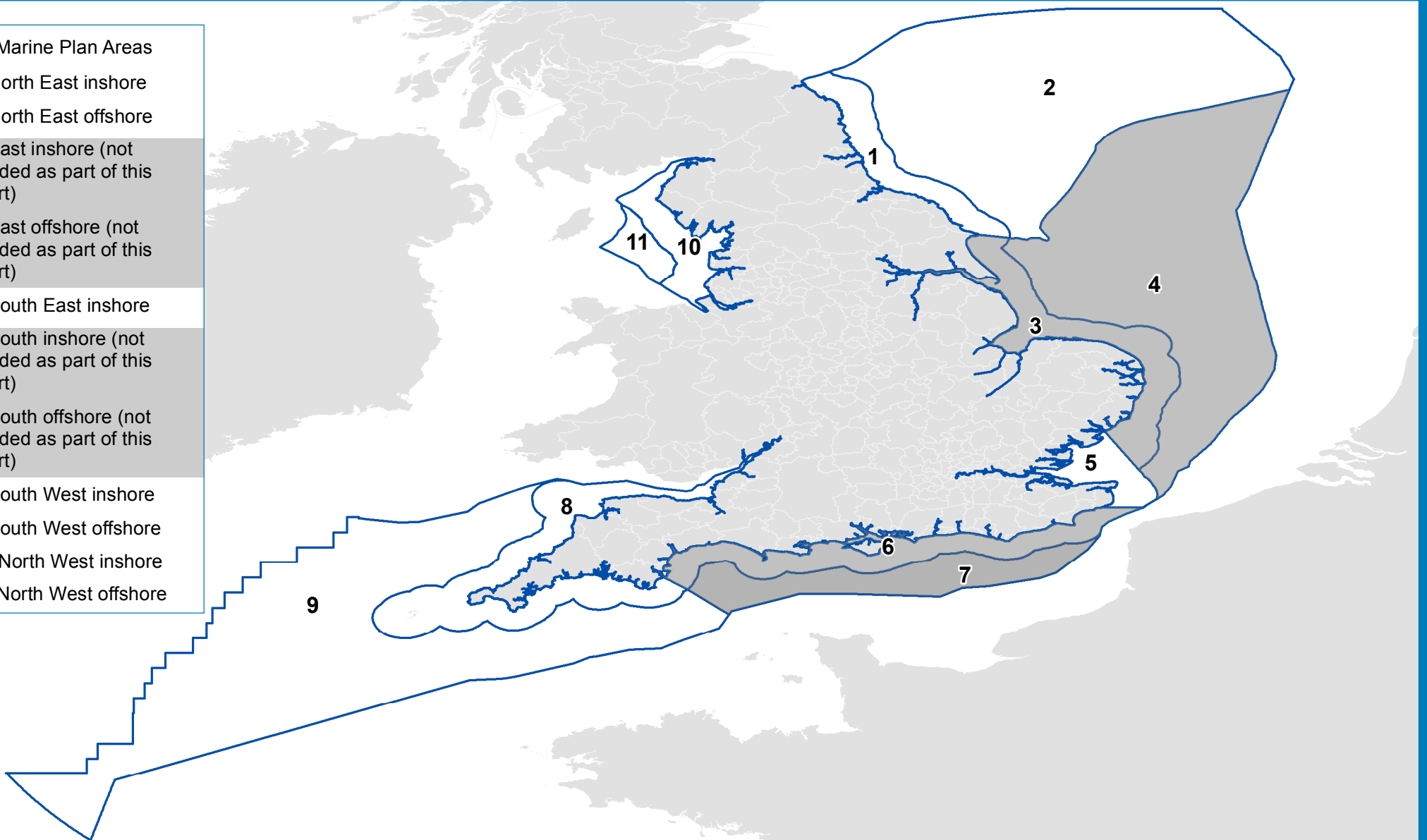




Figure 1.2: Heritage Assets

Coordinate System: GCS ETRS 1989 Not to be used for navigation.

- Marine Plan Areas
- Areas of Outstanding Natural Beauty
- Heritage Coast
- Protected Wreck
- World Heritage Site

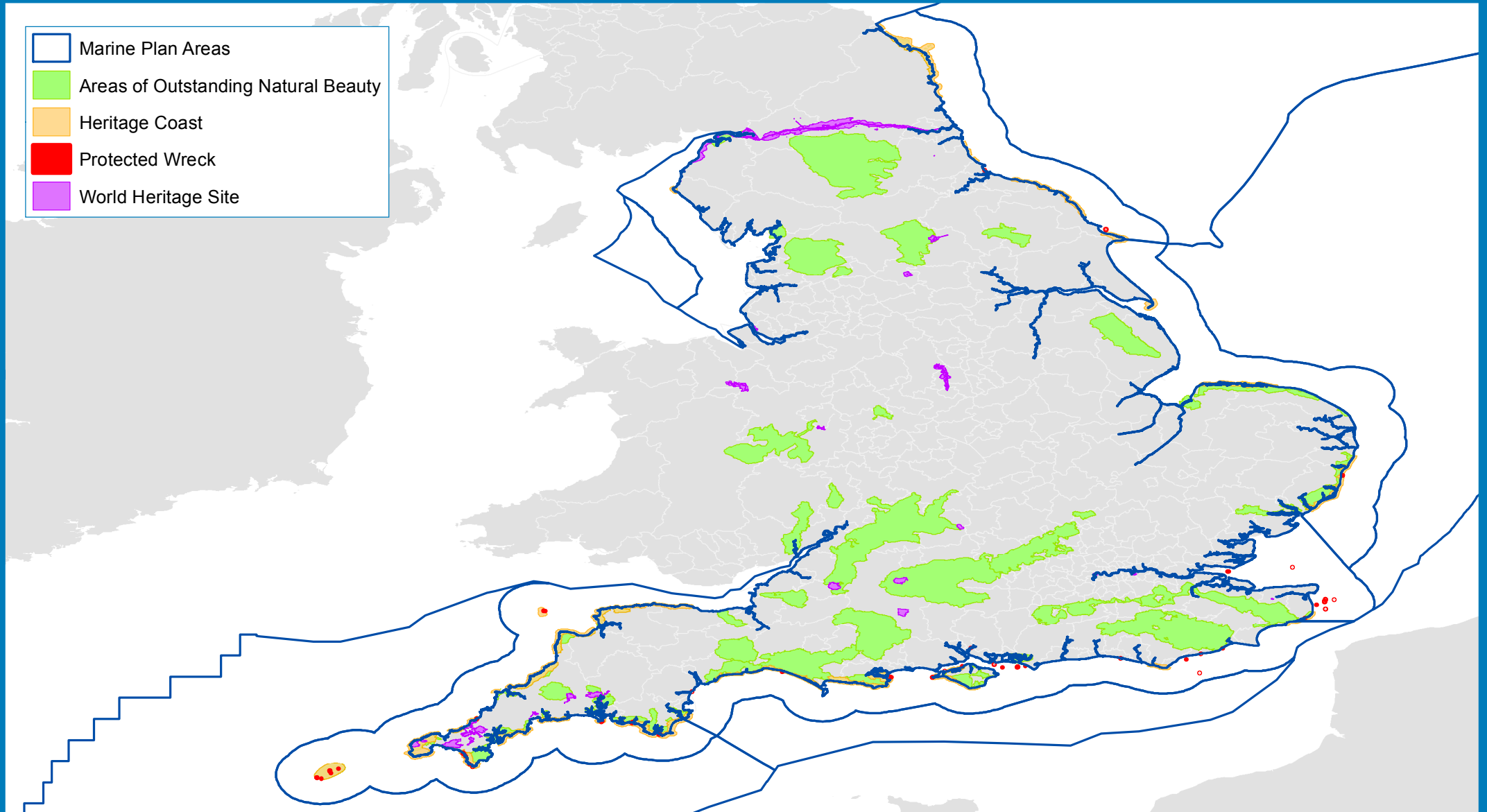




Figure 3.1: National Character Areas

Coordinate System: GCS ETRS 1989 Not to be used for navigation.

 Marine Plan Areas

For maps and descriptions of the National Character Areas see
<http://publications.naturalengland.org.uk/category/587130>

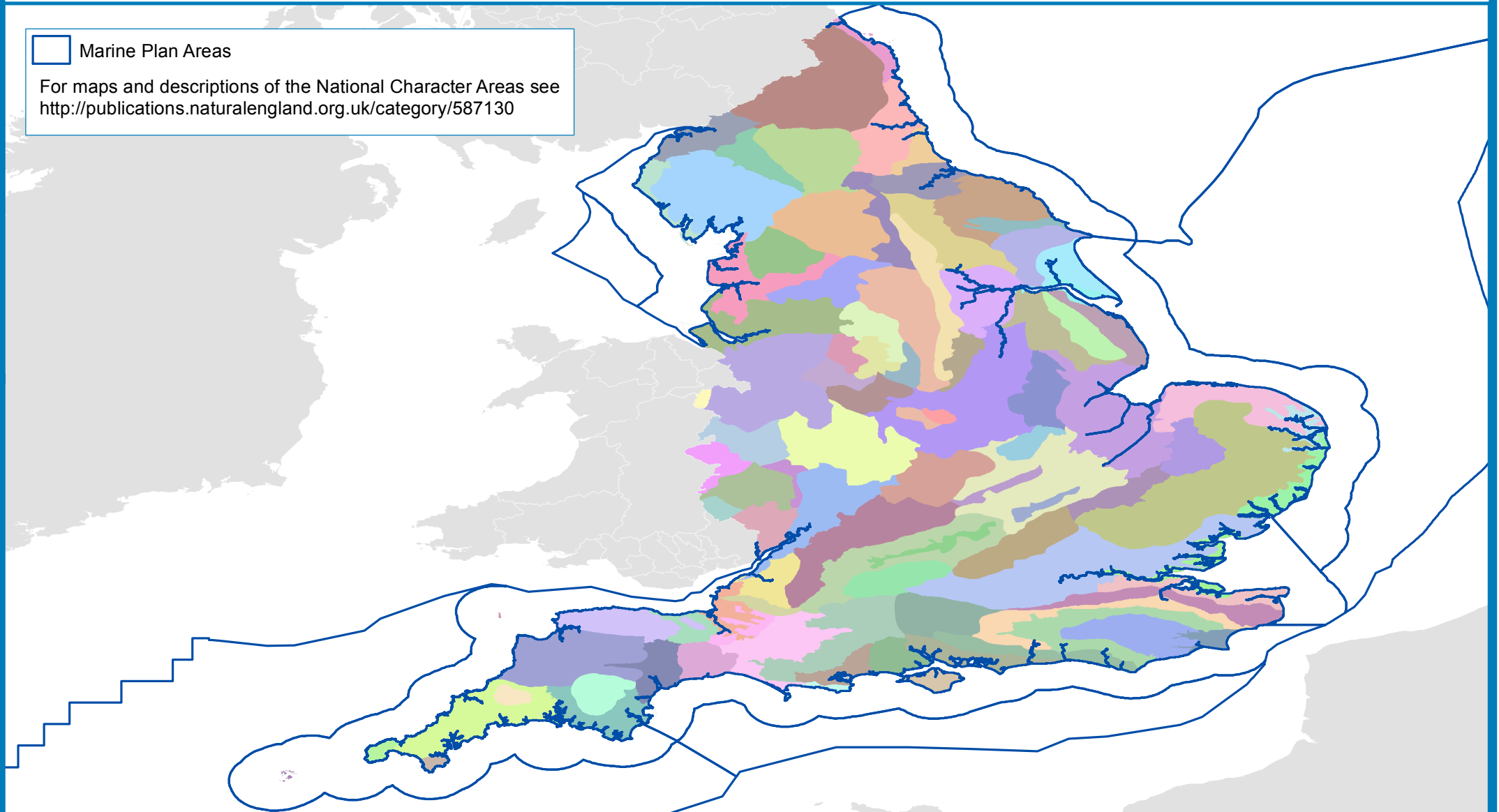




Figure 3.2: Seascape Characterisation Areas (included as an example – this refers to the East Plan area and South Plan area)

Coordinate System: GCS ETRS 1989 Not to be used for navigation.

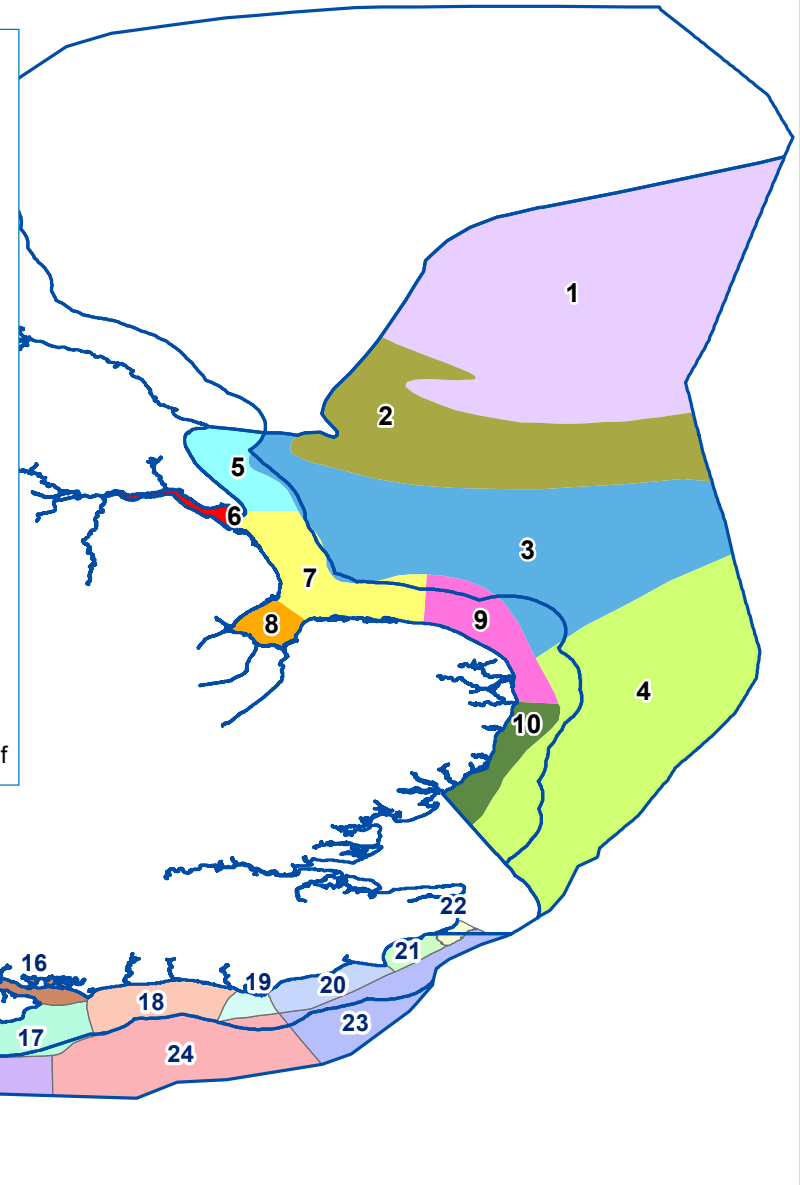
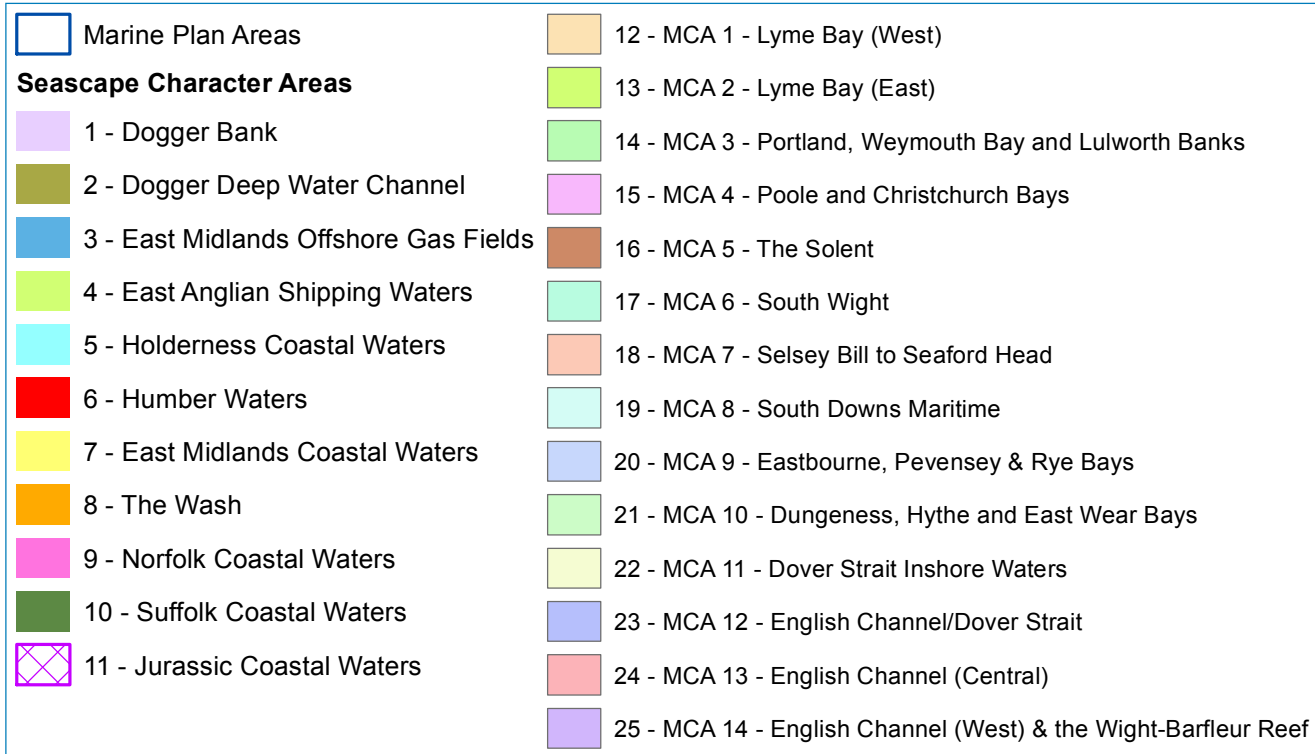




Figure 4.1: Water Framework Directive Coastal Waterbodies and Transitional Waterbodies

Coordinate System: GCS ETRS 1989 Not to be used for navigation.

- Marine Plan Areas
- WFD - Coastal Waterbodies
- Transitional (Estuarine) Waterbodies

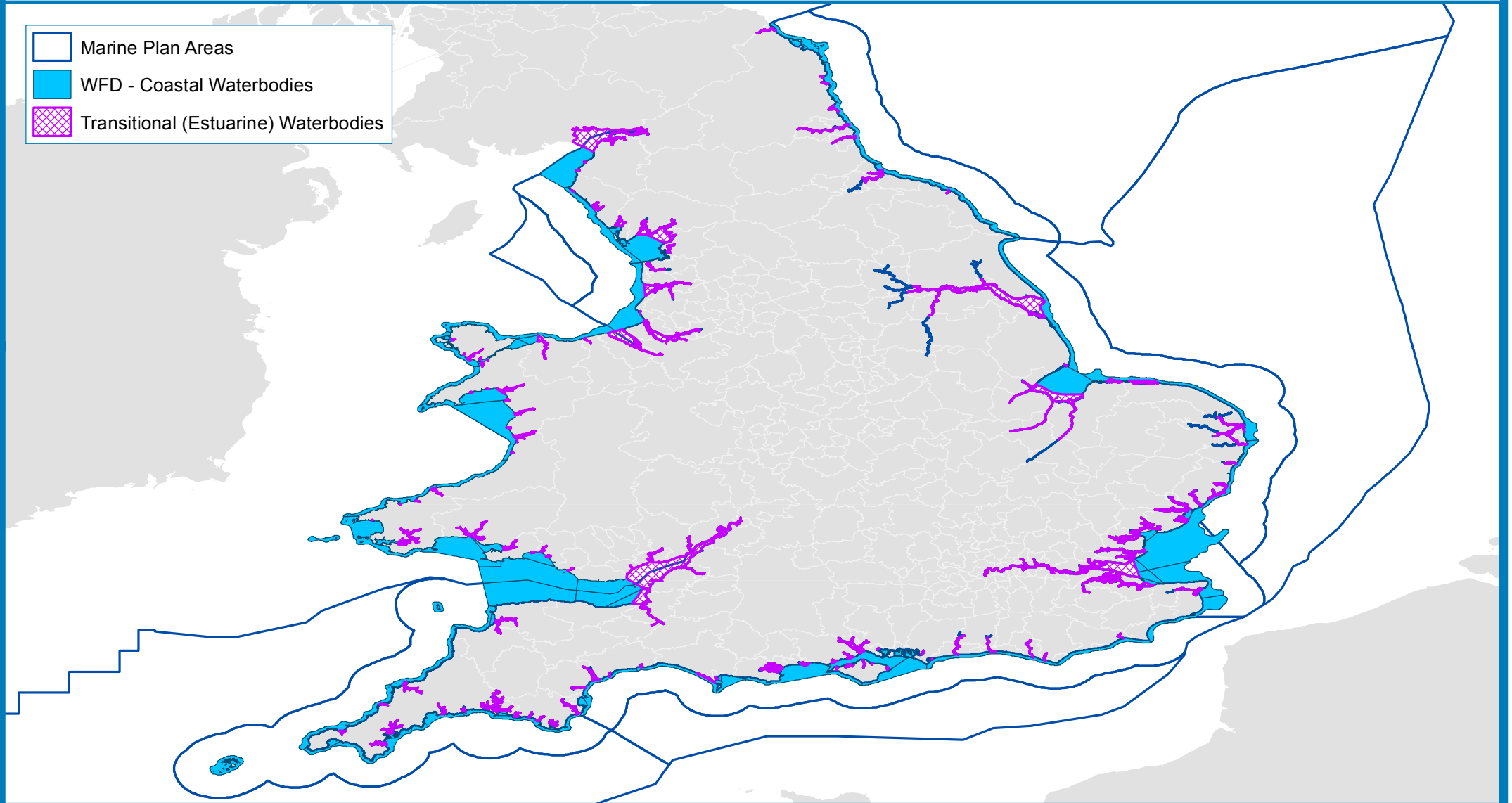




Figure 5.1: Ports

Coordinate System: GCS ETRS 1989 Not to be used for navigation.

- Marine Plan Areas
- UK Major Ports Group Ports
- 2014 Ports (MMO)

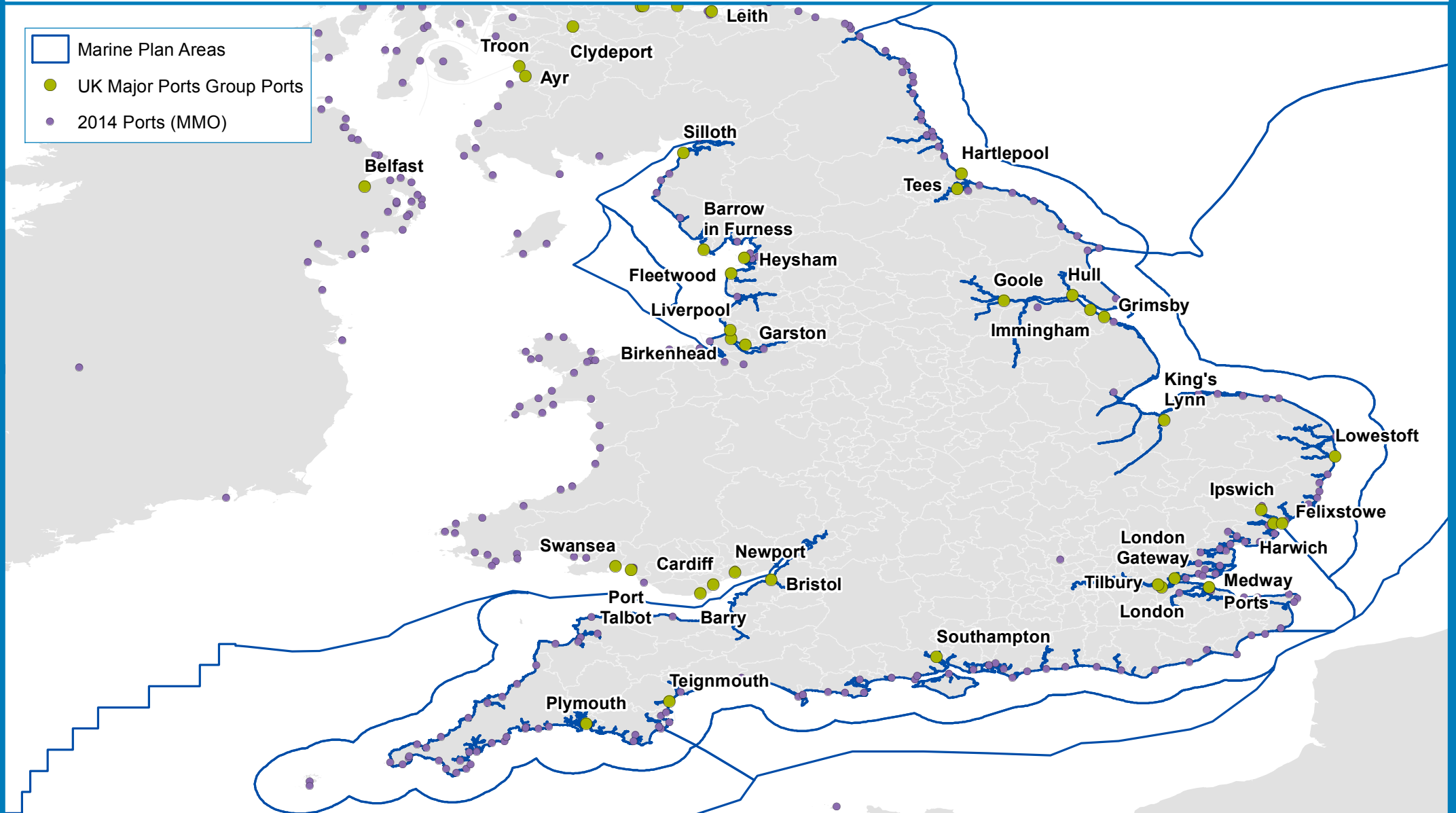
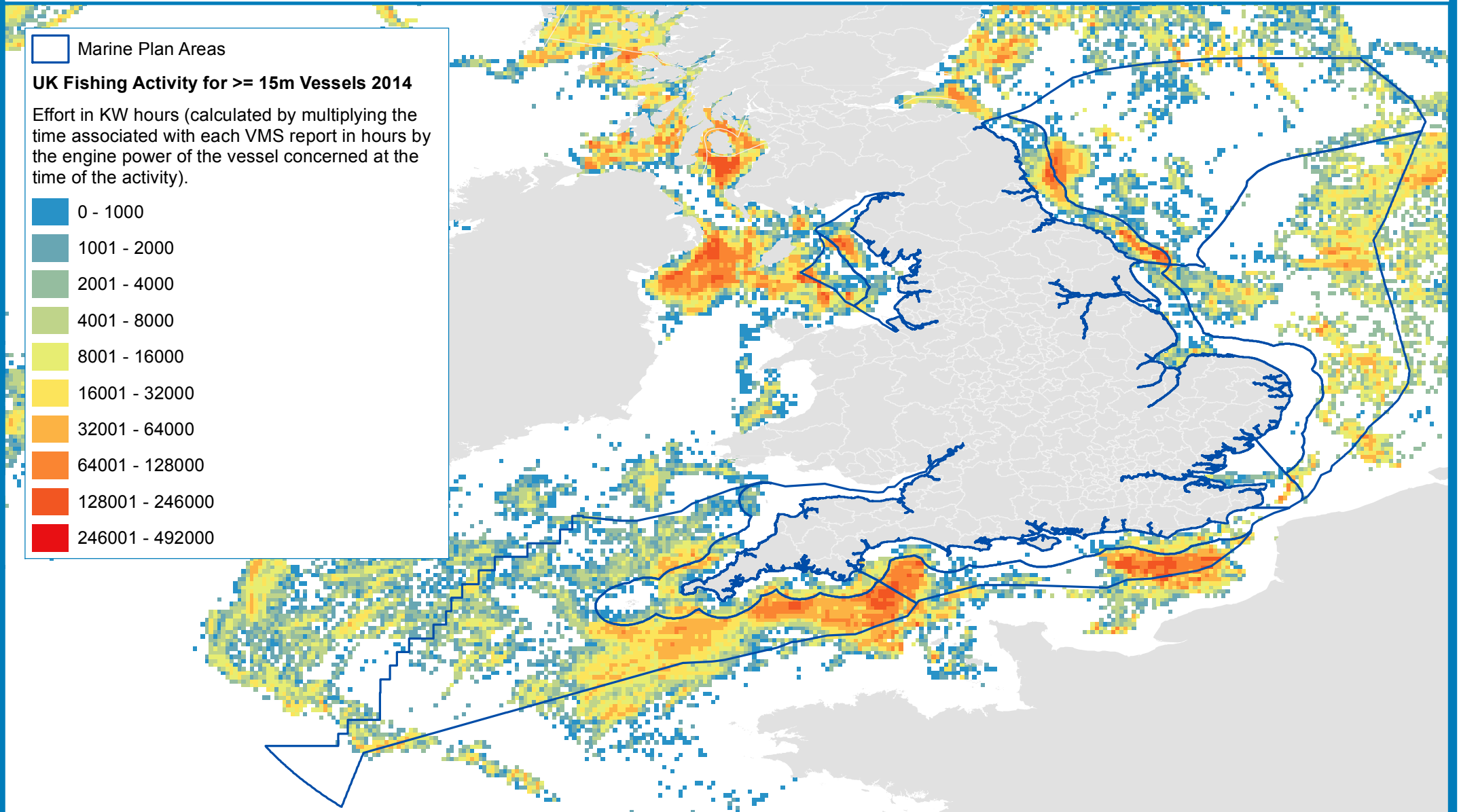




Figure 8.1: UK Fishing Effort

Coordinate System: GCS ETRS 1989 Not to be used for navigation.





Marine
Management
Organisation

Figure 8.2: Area Between International Maritime Organisation Routeing Areas (included as an example – this refers to the South Plan area)

Coordinate System: GCS ETRS 1989 Not to be used for navigation.

- Marine Plan Areas
- Area Between IMO Routeing Areas

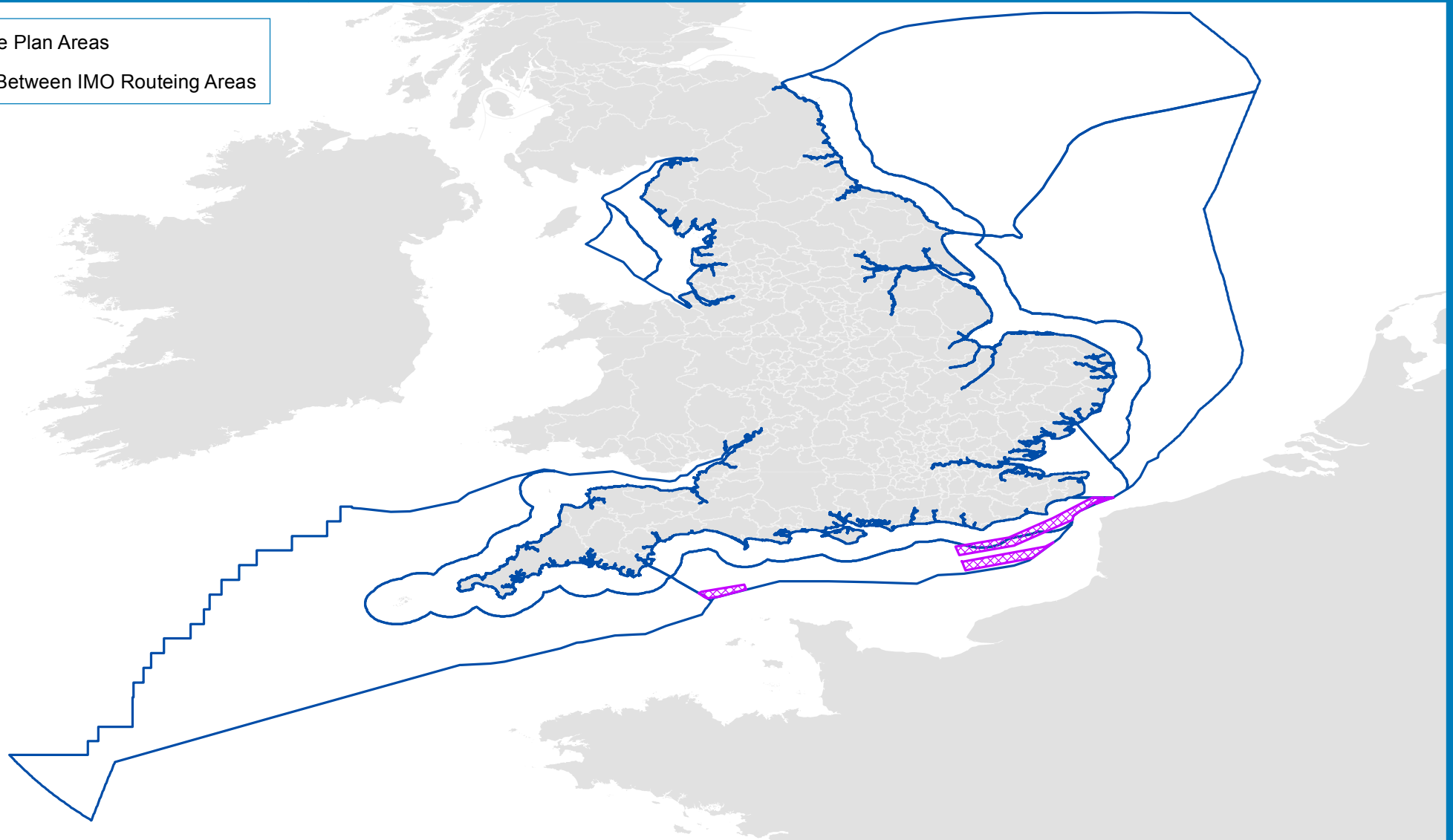




Figure 8.3: Current Aquaculture Potential and Mussel Farm Lease Sites (included as an example – this refers to the East Plan area and a small portion of the South Plan area)

Coordinate System: GCS ETRS 1989 Not to be used for navigation.

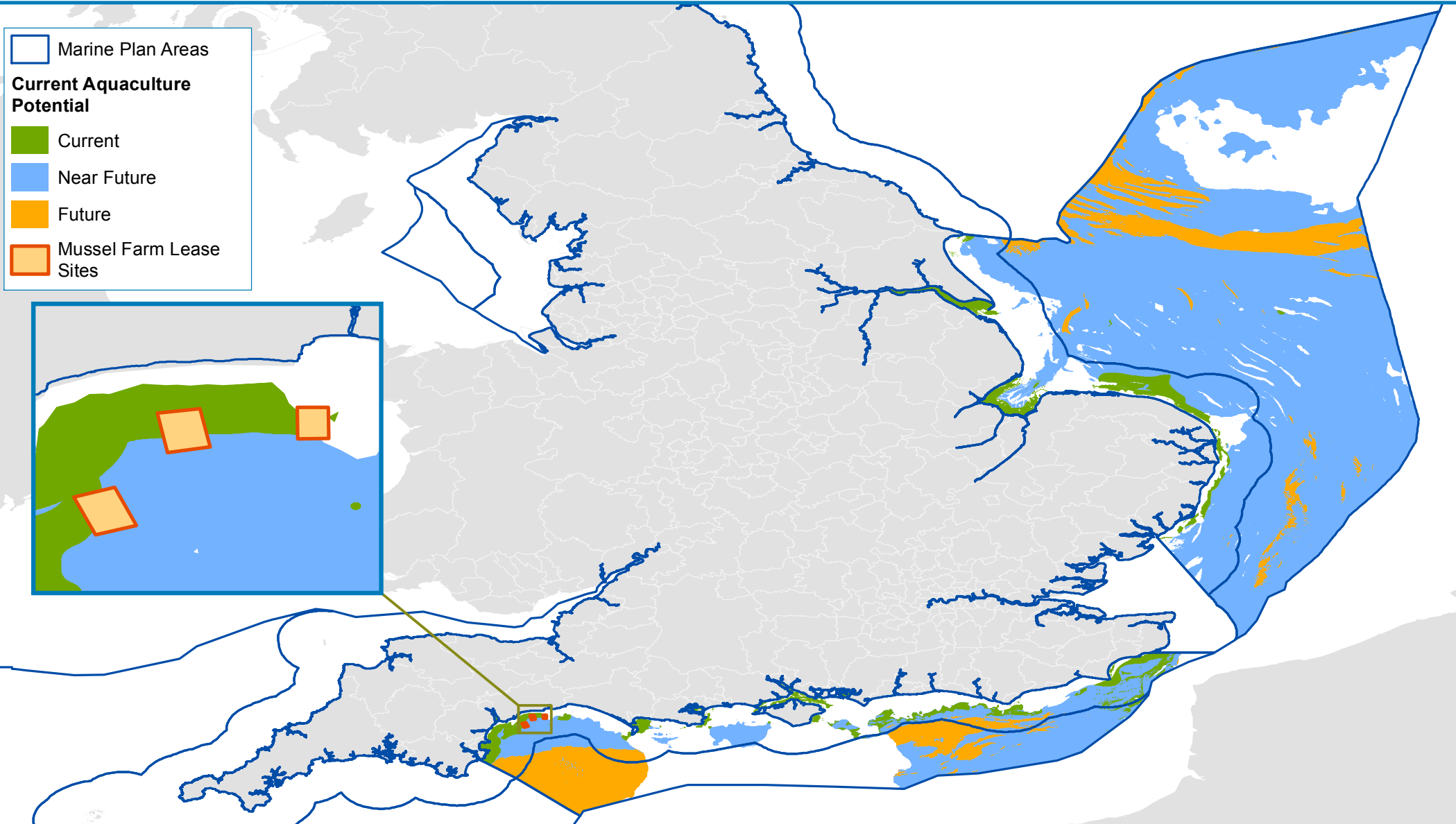




Figure 8.4: Shellfisheries Bivalve Classification

Coordinate System: GCS ETRS 1989 Not to be used for navigation.

 Marine Plan

Bivalve Classification

-  Class A
-  Class B
-  Class C
-  Prohibited
-  Long Term Class B
-  Seasonal Class B/C

For detailed maps see
<https://www.cefas.co.uk/cefas-data-hub/food-safety/classification-and-microbiological-monitoring/england-and-wales-classification-and-monitoring/classification-zone-maps/>

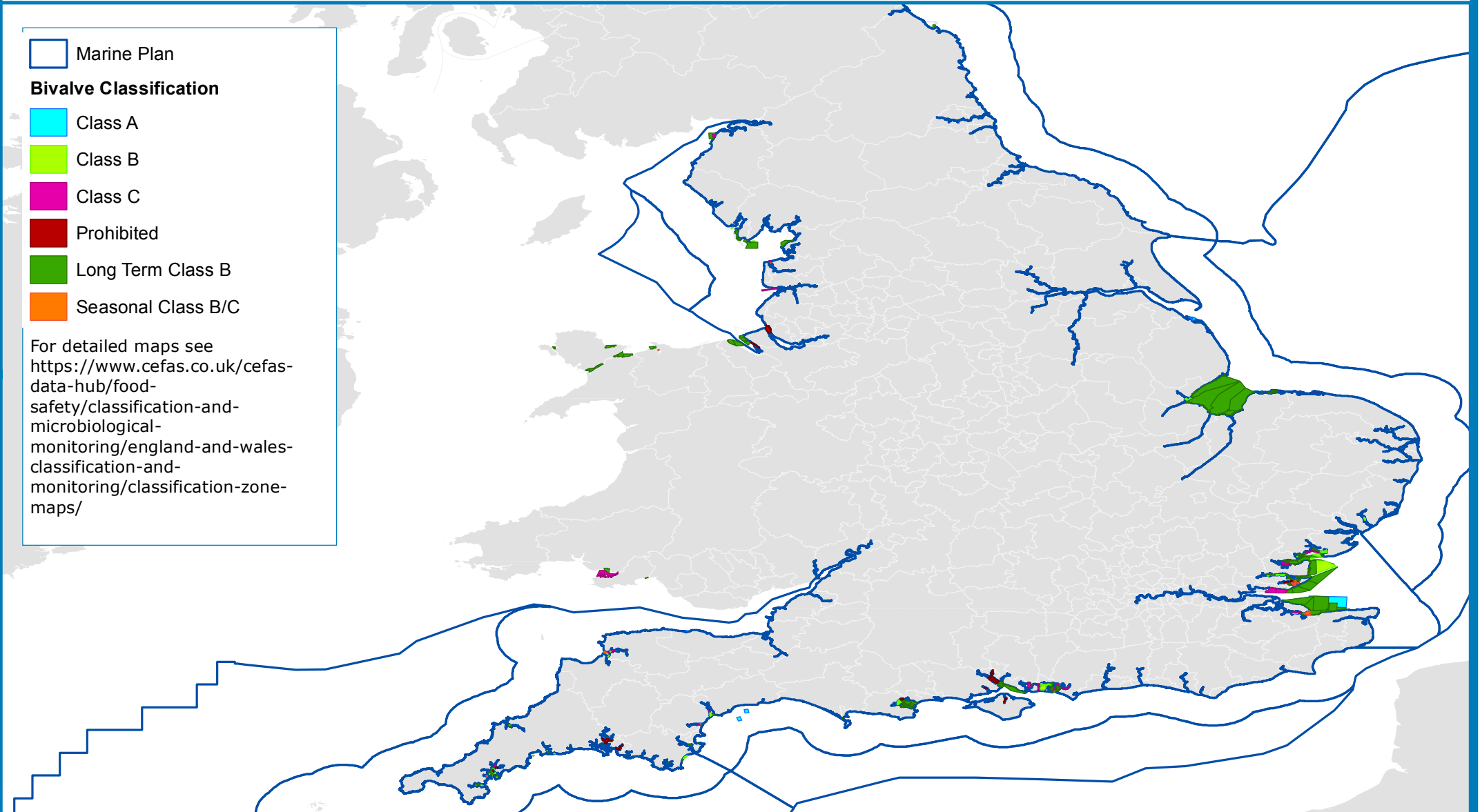




Figure 9.1: Seabird Winter Density

Coordinate System: GCS ETRS 1989 Not to be used for navigation.

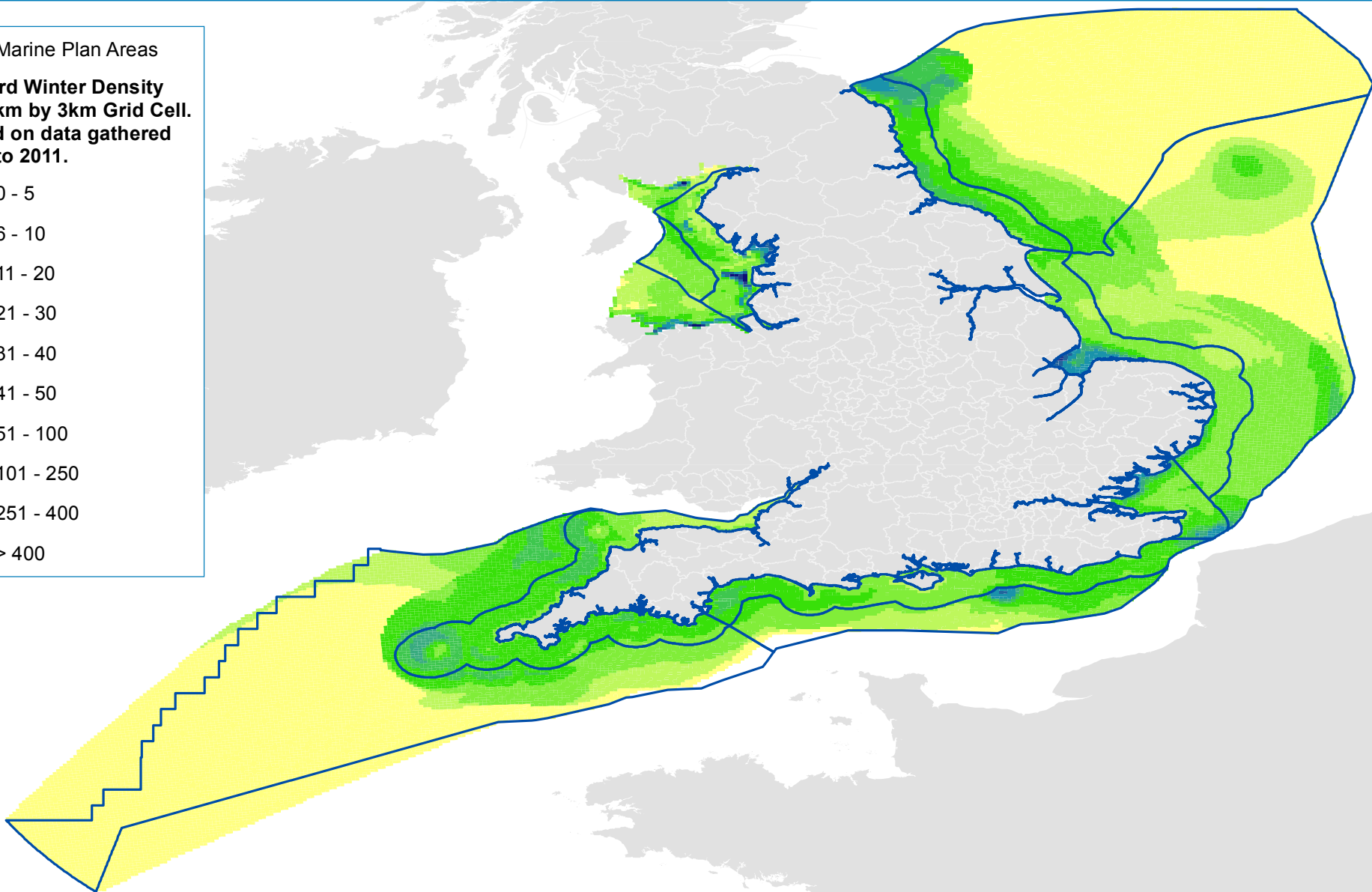
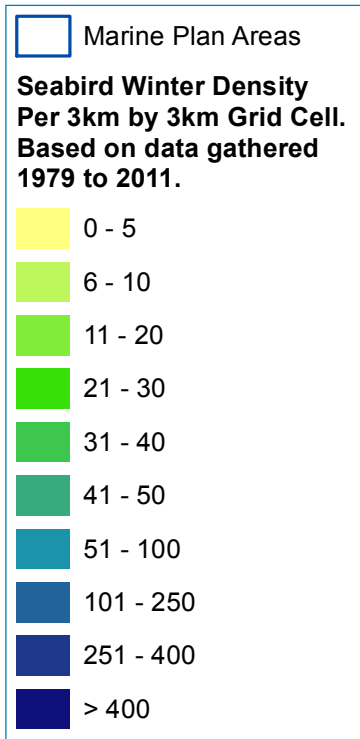




Figure 9.2: Seabird Summer Density

Coordinate System: GCS ETRS 1989 Not to be used for navigation.

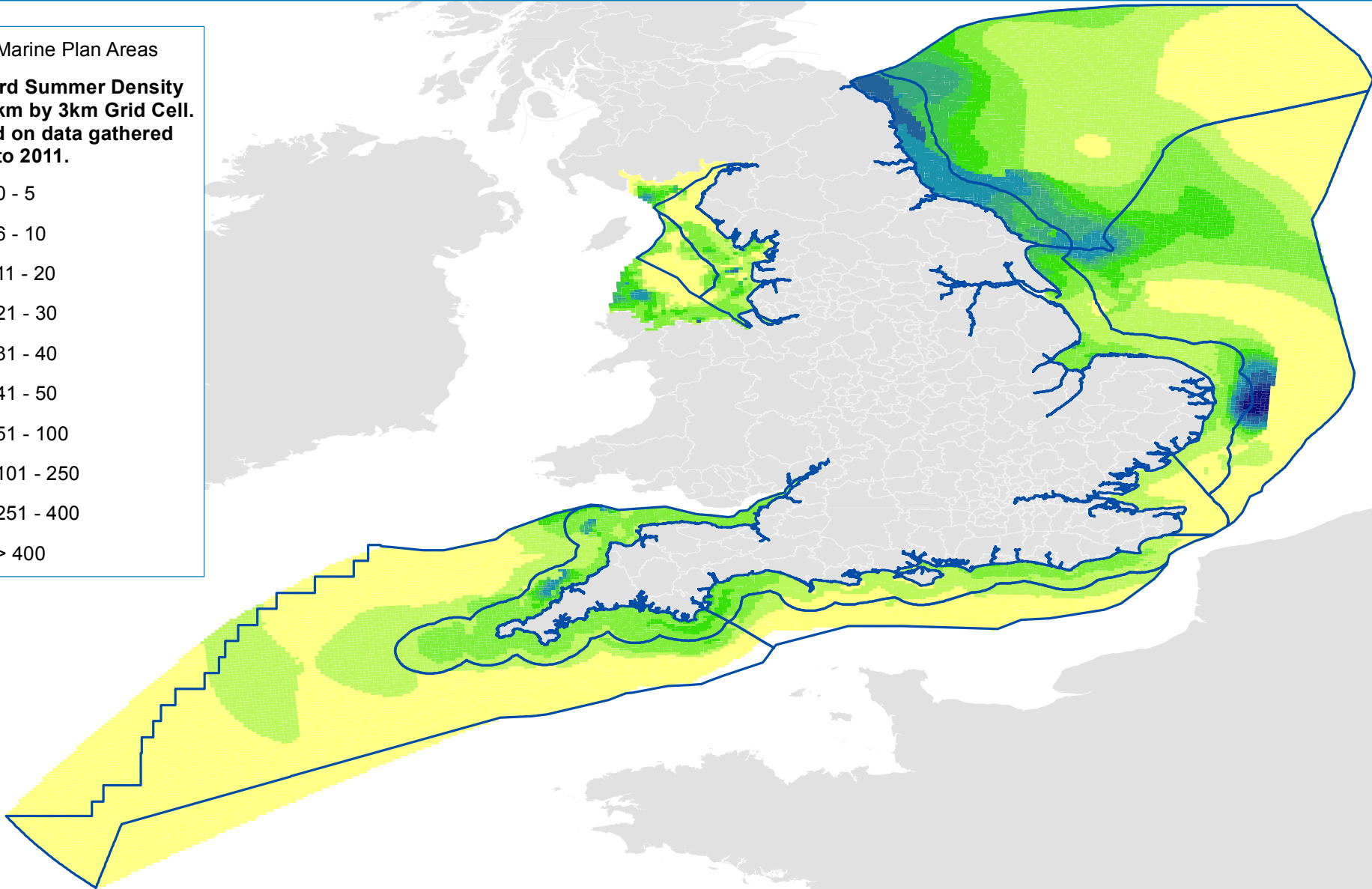
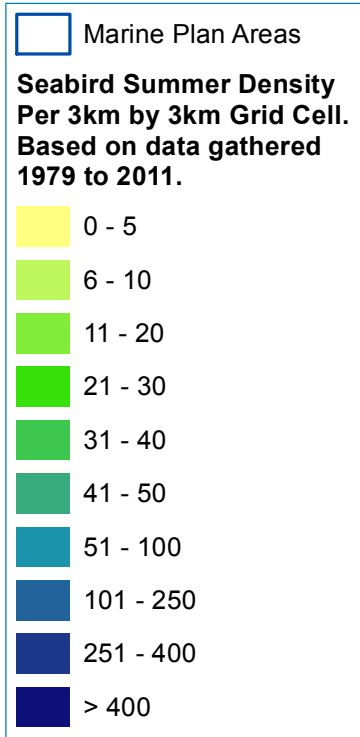




Figure 9.3: Royal Society for the Protection of Birds - Important Bird Areas

Coordinate System: GCS ETRS 1989 Not to be used for navigation.

- Marine Plan Areas
- Important Bird Area

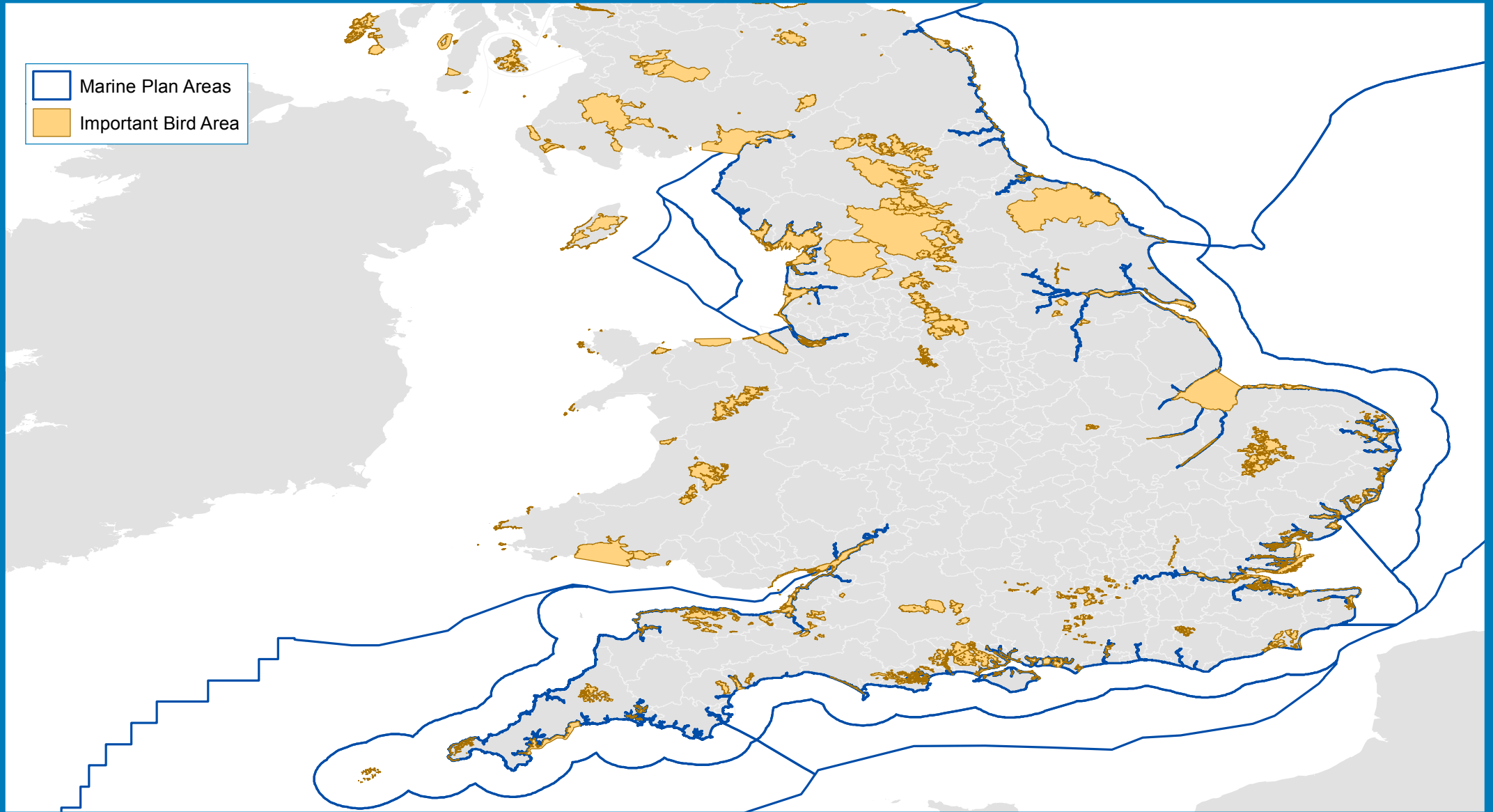




Figure 9.4: Marine Protected Areas

Coordinate System: GCS ETRS 1989 Not to be used for navigation.

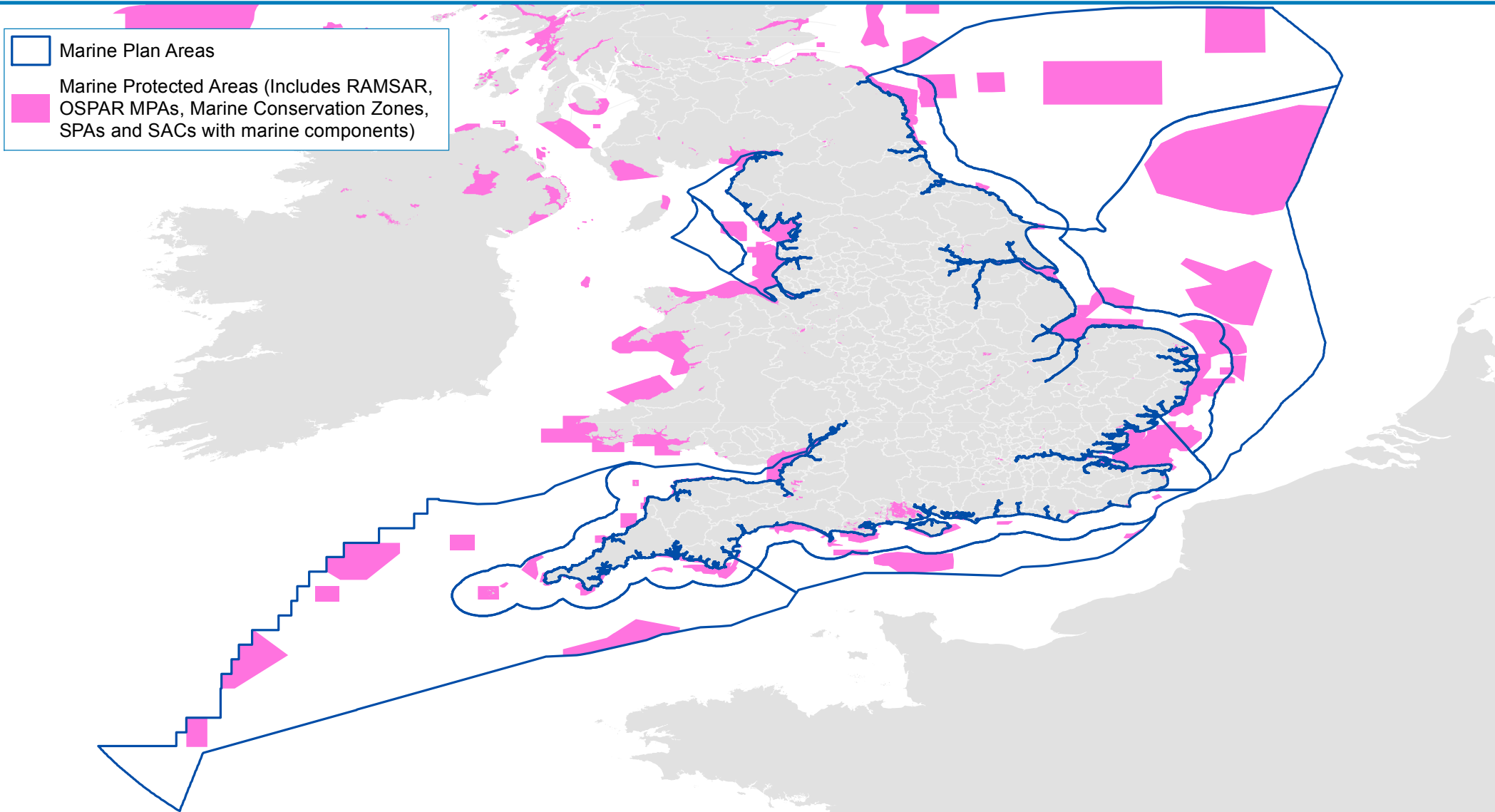






Figure 9.5: Important Bass Nursery Areas in Marine Plan Areas

Coordinate System: GCS ETRS 1989 Not to be used for navigation.

-  Marine Plan Areas
-  Important Bass Nursery Areas in Marine Plan Areas
- 1 - Blyth Power Station
 - 2 - Bradwell Power Station Outfall
 - 3 - Chichester Harbour
 - 4 - Dungeness
 - 5 - Fal Estuary
 - 7 - Grain Power Station Outfall
 - 8 - Helford River
 - 9 - Heysham Power Station Outfall
 - 10 - Kingsnorth Power Station Outfall
 - 11 - Langstone Harbour
 - 12 - Percuil River
 - 14 - Poole Harbour
 - 15 - Portsmouth Harbour
 - 16 - River Avon, Devon
 - 17 - River Camel
 - 18 - River Dart
 - 19 - River Dee
 - 20 - River Exe, Devon
 - 21 - River Fowey
 - 22 - River Taw
 - 23 - River Teign
 - 24 - River Torridge
 - 25 - River Yealm
 - 26 - Salcombe Harbour
 - 27 - Southampton Water
 - 28 - The Fleet

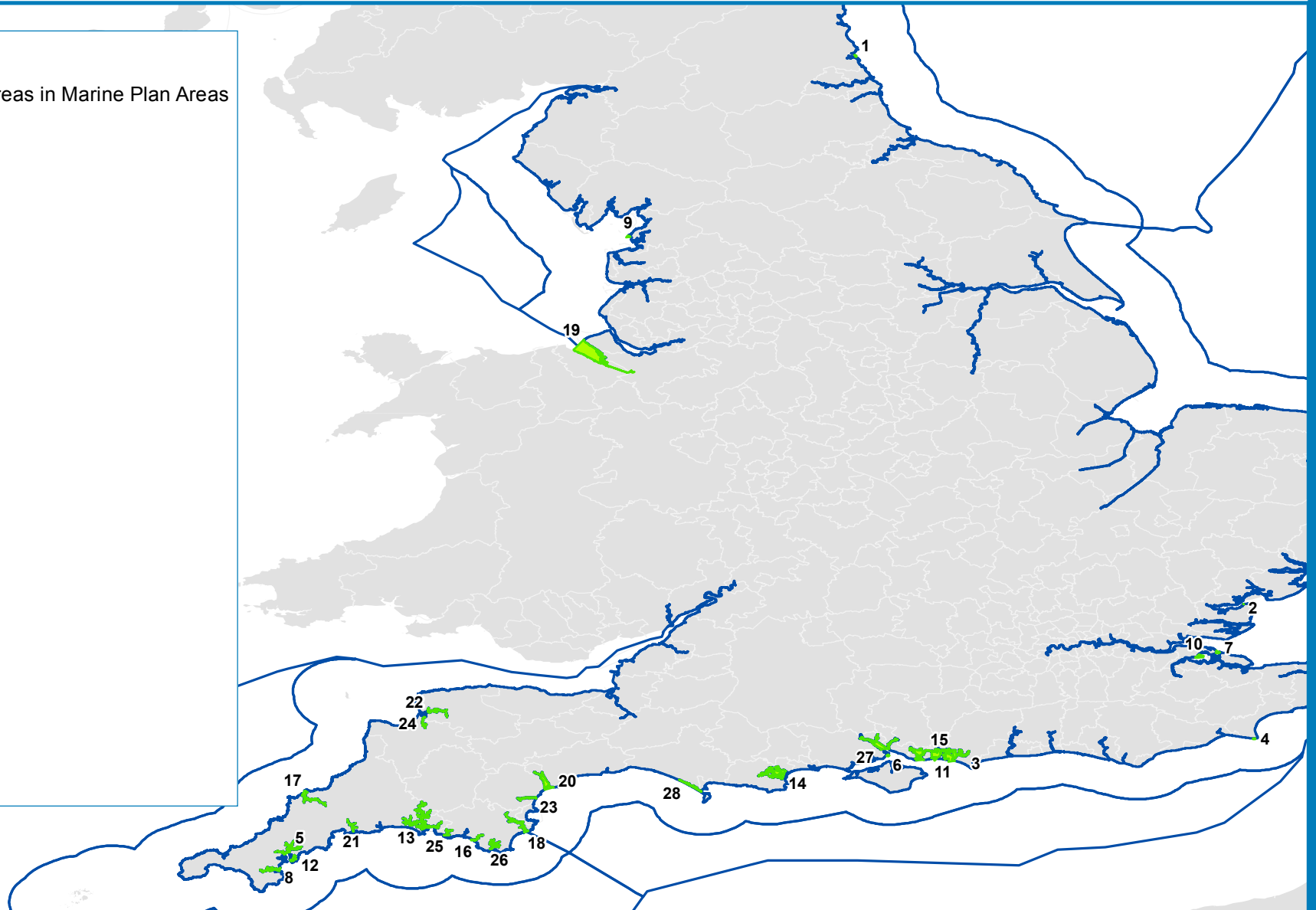




Figure 9.6: Grey seal average at-sea densities (seals per 5x5km)

Coordinate System: GCS ETRS 1989 Not to be used for navigation.

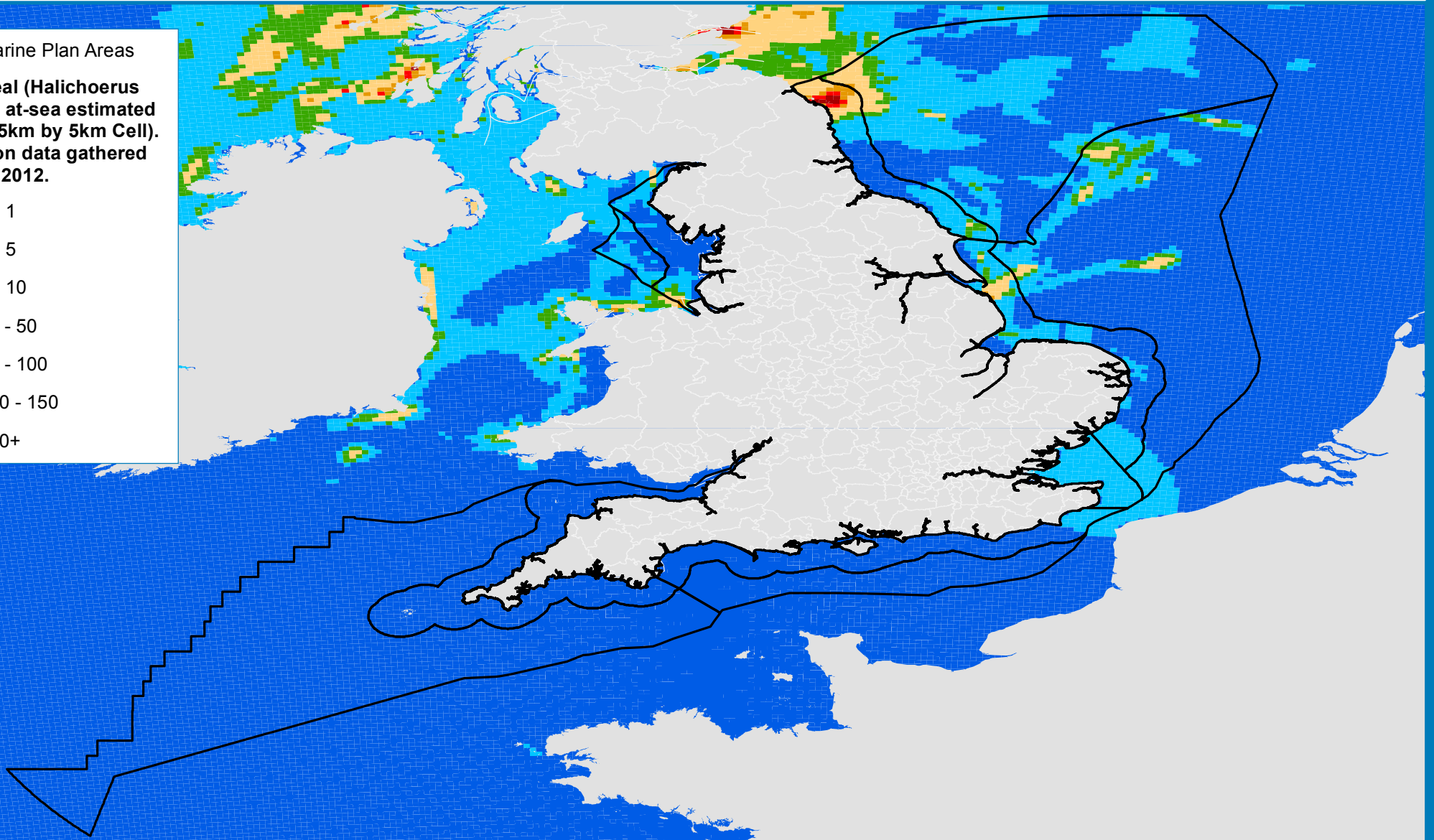
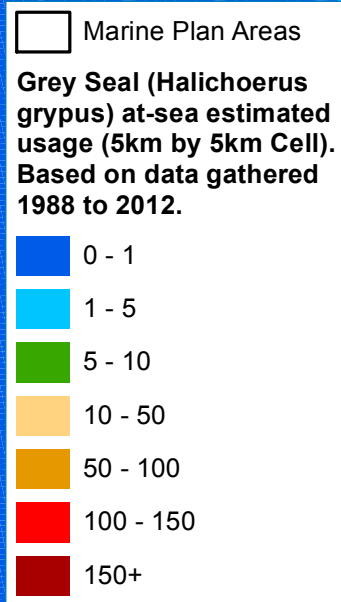




Figure 9.7: Grey seal average total at-sea and hauled-out densities (seals per 5x5km)

Coordinate System: GCS ETRS 1989 Not to be used for navigation.

□ Marine Plan Areas

Grey seal (*Halichoerus grypus*) total estimated usage (5km by 5km Cell). Based on data gathered 1988 to 2012.

- 0 - 1
- 1 - 5
- 5 - 10
- 10 - 50
- 50 - 100
- 100 - 150
- 150+

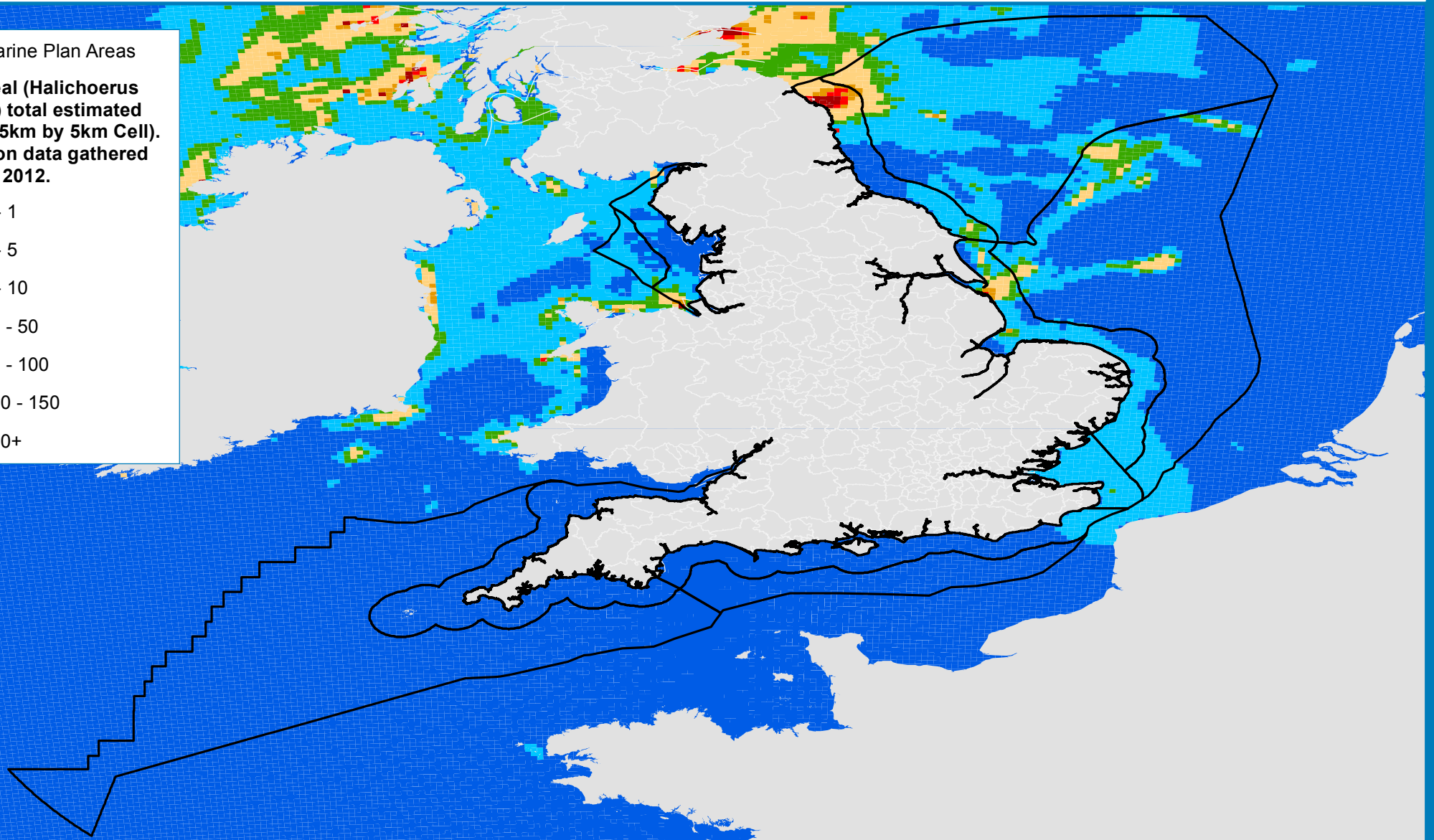




Figure 9.8: Harbour seal average at-sea usage (seals per 5x5km)

Coordinate System: GCS ETRS 1989 Not to be used for navigation.

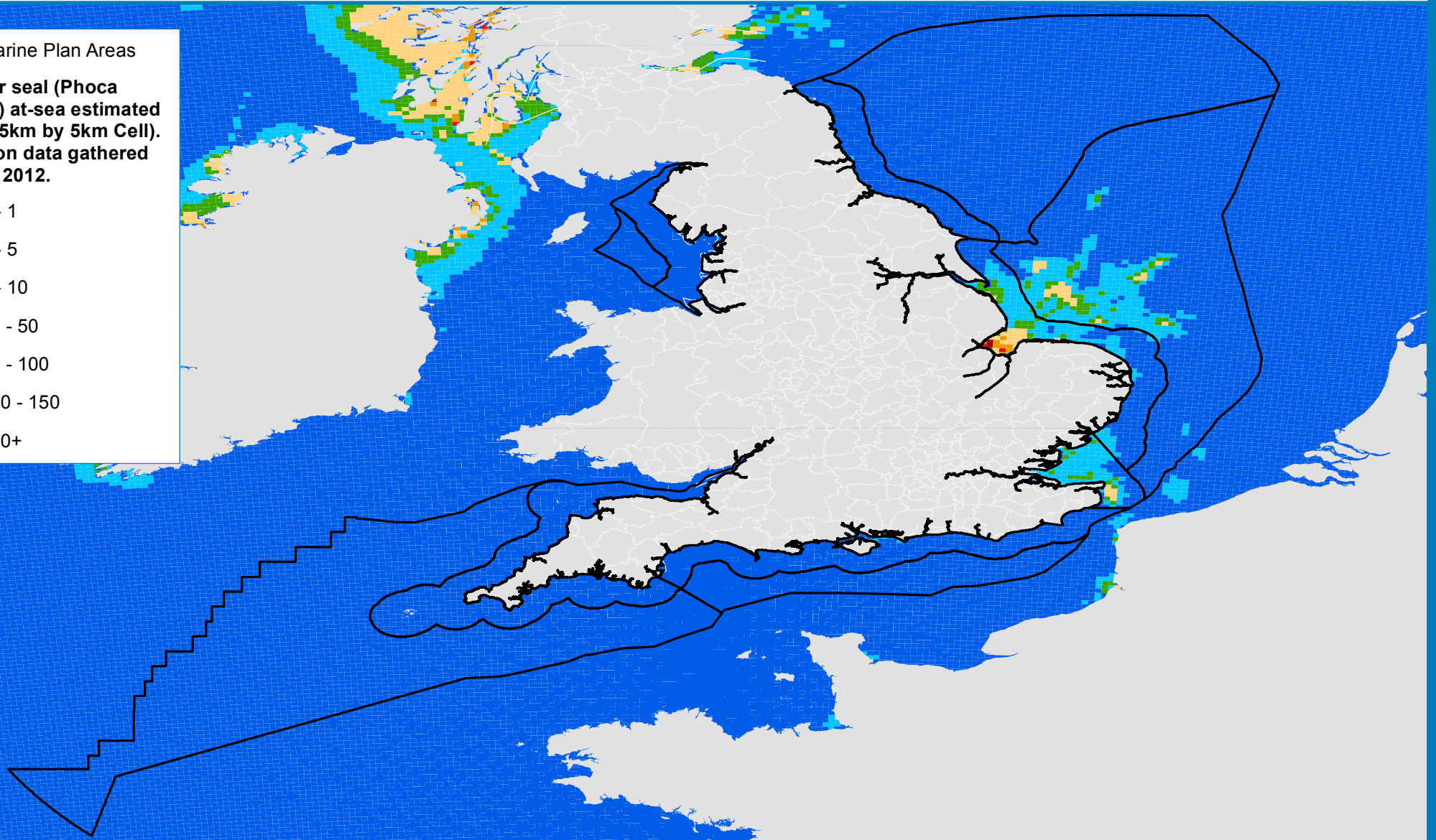
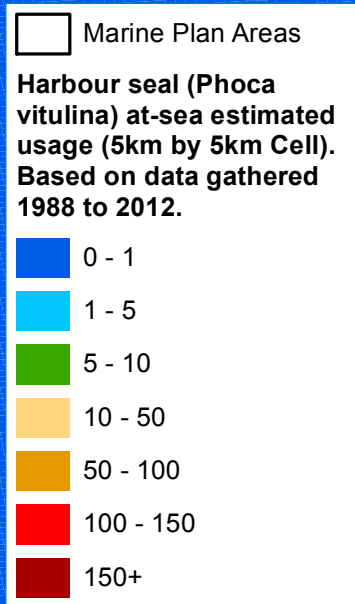




Figure 9.9: Harbour seal average total at-sea and hauled-out densities (seals per 5x5km)

Coordinate System: GCS ETRS 1989 Not to be used for navigation.

