

2014 SCHEME FOR THE ALTERATION OF THE BOUNDARIES OF THE NORTH LEVEL DISTRICT (2010) INTERNAL DRAINAGE DISTRICT

1) This Scheme shall come into force on the day after the day on which the Order confirming this scheme as made.

2) In this Scheme:-

“the Additional Land” means all the land in the City of Peterborough, the parishes of Elm, Peakirk, Thorney, Whittlesey, Wisbech St Mary, coloured orange and yellow on the Map (2014).

“the Commencement Date” means the date on which this Scheme comes into force.

“the Map (2014)” means the map sealed by the Environment Agency and dated August 2014 entitled “North Level District (2010) Internal Drainage Board; Boundary Alteration 2014” and deposited at the Environment Agency, Kingfisher House, Goldhay Way, Orton Goldhay, Peterborough, PE2 5ZR.

“the North Level District (2010) Internal Drainage Board” means the internal drainage board^(a) constituted by the scheme confirmed by the North Level District (2010) Internal Drainage Board Order^(b) (hereinafter called the “2010

^(a) Deemed by section 1(4) of the Land Drainage Act 1930 (20 & 21 Geo. 5. c.44) to have been constituted under that Act for the purposes of that Act.

^(b) S.I 2010/2011

Order”) and “the North Level District (2010) Internal Drainage District” means the internal drainage district constituted by that scheme.

- 3) As from the Commencement Date, the boundaries of the North Level District (2010) Internal Drainage District shall be altered to include the Additional Land.

- 4) As from the Commencement Date paragraph 4(2) of the 2010 Order is amended as follows

“4(2) The North Level District (2010) Internal Drainage District is divided into 2 Electoral Divisions as specified in the first column of the table below and as defined in the second column by reference to the Map (2014), and the number of members by which each Electoral Division is to be represented is provided in the third column of the table.

Electoral Divisions	Defined by the Map	Number of Members
North Level Western District	In Pink and Orange	8
North Level Eastern District	In Blue and Yellow	6”

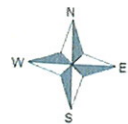
- 5) The Scheme confirmed by the 2010 Order shall apply to the Additional Land

2014

Robert M. M. M.

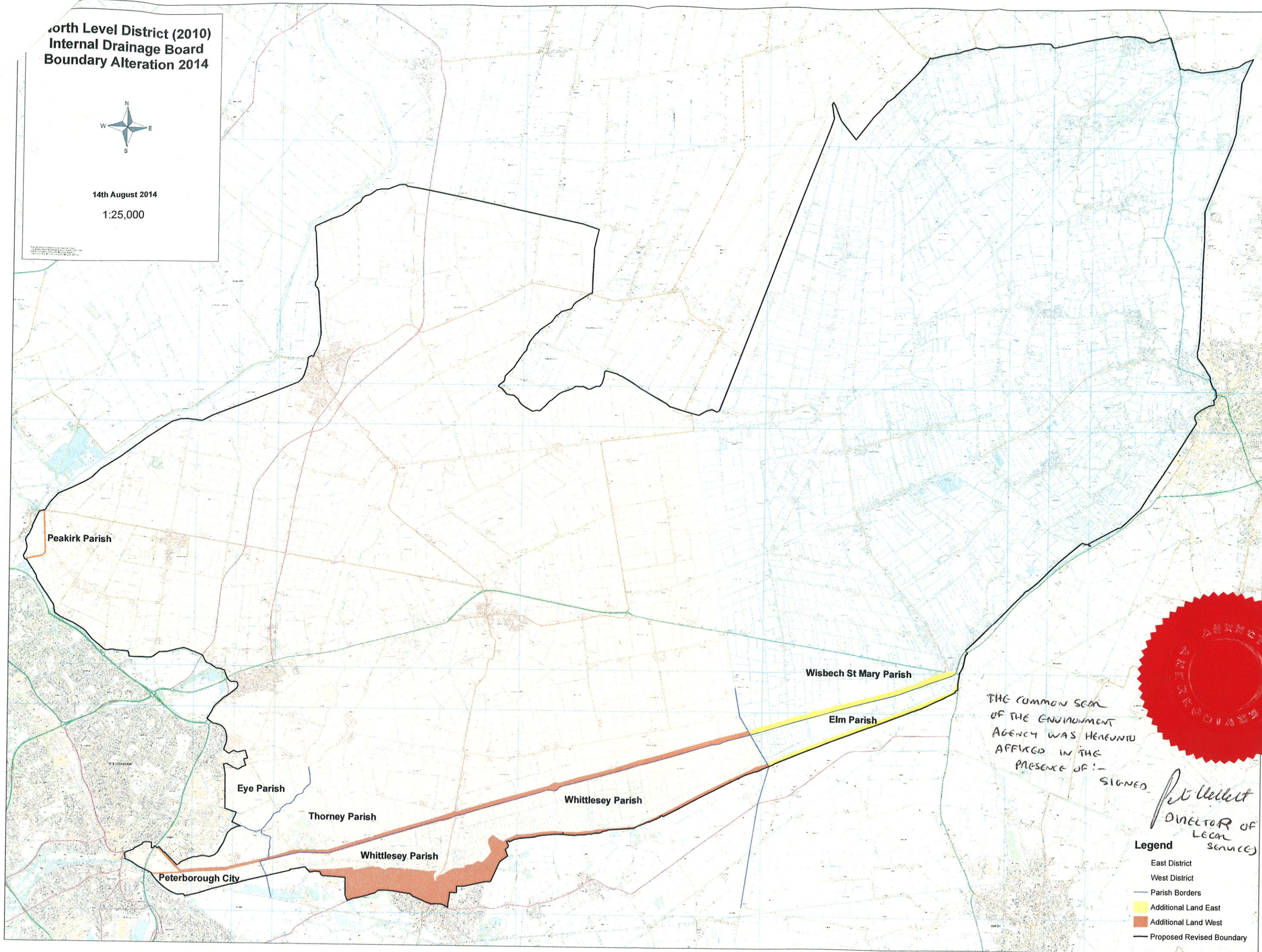
DIRECTOR OF LEGAL SERVICES

**North Level District (2010)
Internal Drainage Board
Boundary Alteration 2014**



14th August 2014

1:25,000



THE COMMON SEAL
OF THE ENVIRONMENT
AGENCY WAS HEREONTO
AFFIXED IN THE
PRESENCE OF:-

SIGNED

P. J. Bell
DIRECTOR OF
LEGAL
SERVICES

Legend

- East District
- West District
- Parish Borders
- Additional Land East
- Additional Land West
- Proposed Revised Boundary