

# HS2 Heritage Sub-Group

Generic Written Scheme of Investigation  
for the investigation and archaeological recording of historic buildings and structures

---

Andrew Harris

24 June 2014

# Introduction

---

- Background and context
- Aims of the GWSI
- Structure of GWSI
- The Site Specific WSIs
- Next steps
- Questions



# Background and context

---

- Current extent of works  
Desk top assessment to support ES
- The hybrid Bill and schedule 17 – designated assets  
Dis-applies LBC – replaced with Heritage Deeds
- Environmental minimum requirements (EMRs)  
Suite of documents setting out approach including heritage memorandum, LEMP and CoCP

# Environmental Minimum Requirements (EMRs)

---



# Heritage Memorandum, CoCP and LEMP

---

## Heritage Memorandum

sets out how historic environment is to be addressed during design and construction

all works to be undertaken by suitably qualified persons / organisations,  
all works undertaken to best practice and standards

Requirement for GWSI to set principals of works

## CoCP

sets out how the contractor will seek to minimise impact to heritage assets and includes requirement for GWSI on which WSI will be based

## LEMP

Summarise extent of works within each LPA and that works to be undertaken in accordance with the WSI

# Relationship to project phasing

---

## Planning

ES

Hybrid Bill; EMRs



## Design Development

continued design and mitigation refinement, development of GWSI and WSI, additional assessment works



## Construction

Implementation of heritage works according to WSI

# The Generic WSI – Aims and scope

---

- Aims

Sets out how the arrangements and controls set out in Heritage memorandum and CoCP are to be met during design and construction phases

Establishes a set of principals and standards to be adopted in the site specific WSIs to ensure conformity across the project in terms of scope content format and quality of information

- Scope

applies to all works that may affect historic buildings,  
applies to all works of design development and construction including early and enabling works

# Professional codes, standards and guidance

---

## All work to be:

- carried out by suitably qualified, and competent professionals experienced in building investigation and archaeological building recording
- undertaken by organisations with appropriate quality management systems
- Undertaken in consideration of policy objective for conservation of historic environment and the codes of practice guidance of IfA, IHBC, EH etc.





# The GWSI sets out the project strategy for....

---

## Desk based assessment

- Undertaken as part of ES, in many cases sufficient to enable drafting of WSI

## Specialist assessment

- to provide additional information - intrusive
- to inform an appropriate programme of investigation
- appropriate for assets subject to heritage deeds
- enables drafting of heritage method statements for works incorporating WSI.

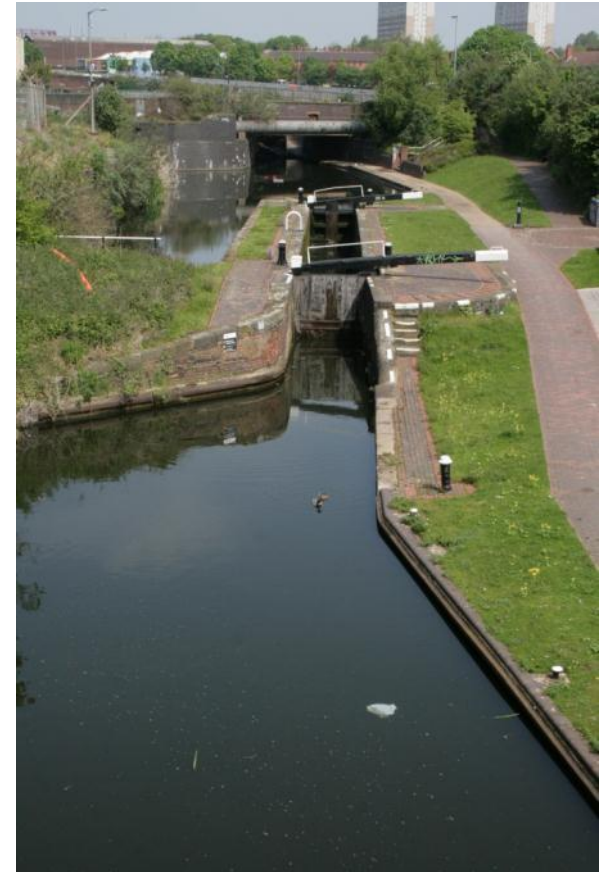
## Site based investigation and recording

- Level of investigation to be determined in consideration of significance and impact
- Levels of recording and scope of recording defined in relation to EH levels of recording
- The WSI will set out the specific requirements and scope

## Post survey works and archive deposition

- Standards for document format and content
- Standards for archive compilation
- Standards and opportunity for professional and public publication

## Engagement with EH and the local authorities



# site-specific WSIs

---

- Detailed requirements determined on outcomes from DBA and further specialist assessment
- Describe asset and its significance and define scope of works
- Set out the phasing of the works and interfaces with other elements of the project and activities
- All works designed with a strong emphasis on health and safety
- Developed in consultation with LPA (approval required for works subject to heritage deed)
- Evolving documents – to be updated as the engineering design progresses and the extent of archaeology is understood



# Purpose of site specific WSIs

Site-specific WSIs serve a dual purpose:

- to provide a specification for archaeological investigations
- To provide accurate information for Principal Contractors so they can:
  - understand their responsibilities in facilitating archaeological works safely
  - programme their activities accurately
  - design temporary works and attendances required safely



## Next steps

---

1. Draft Generic WSI to be reviewed internally
2. Issued to the Heritage sub-group for review
3. Six week review period
4. Comments will be reviewed and a final draft of the document will be published



# Questions?

---