



Department of Energy & Climate Change (DECC) Letter of Approval .....	1
<b>1. Operations within the Schiehallion Field .....</b>	<b>2</b>
<b>1.1. Hydrocarbon Release Response Interface .....</b>	<b>2</b>
1.1.1 Communications Offshore .....	2
1.1.2 Communications Onshore .....	2
1.1.3 Nearby Installations .....	3
1.1.4 Oil Spill Response Limited Capability Statement .....	3
<b>1.2. BP IMT Activation .....</b>	<b>3</b>
<b>1.3. Well Intervention Vessel / MODU Activities within the Schiehallion Field .....</b>	<b>4</b>
<b>1.4. ERRV Details .....</b>	<b>4</b>

**Department of Energy & Climate Change (DECC) Letter of Approval**

As approved under the Merchant Shipping (Oil Pollution Preparedness, Response and Co-Operation Convention) Regulations 1998 & the Offshore Installations (Emergency Pollution Control) Regulations 2002.

**1939 - 01.08.06.05/188c**

**THE MERCHANT SHIPPING (OIL POLLUTION PREPAREDNESS,  
RESPONSE AND CO-OPERATION CONVENTION) REGULATIONS 1998  
THE OFFSHORE INSTALLATIONS (EMERGENCY POLLUTION CONTROL)  
REGULATIONS 2002**

**APPROVAL OF OIL POLLUTION EMERGENCY PLAN**

Pursuant to the above-mentioned Regulations, the Secretary of State hereby approves the **BP Schiehallion Off-Station Addendum, BP Schiehallion Off-Station Addendum** oil pollution emergency plan which was submitted by **Petrofac** and received by the Department on **June 3, 2013** and updated **July 5, 2013**.

For and on behalf of the Secretary of State



Authorised to act in that behalf

**July 10, 2013**

## 1. Operations within the Schiehallion Field


This addendum has been prepared by BP Exploration Operating Company Limited (“BP”) to cover activities within the Schiehallion field following the departure of the Schiehallion FPSO. It is expected that the Schiehallion FPSO will depart from the field in August 2013 and the new FPSO will arrive during 2015. During the intervening period intermittent work will be conducted by Multi-Purpose Work Vessels to prepare the field for the arrival of the new FPSO. The ERRV will remain in place to provide 24 hours emergency cover to the Schiehallion and Foinaven fields.

This Addendum details the roles and responsibilities of BP and the communication pathways to be followed, in the event of a hydrocarbon release to sea following the departure of the Schiehallion FPSO. This Addendum should be referred to jointly with the **Schiehallion Oil Pollution Emergency Plan (OPEP) (SCH-EM-002)** and **BP UKCS Fields Onshore OPEP (UKCS-EM-002A)** and has been the subject of consultation and been approved by the relevant statutory authorities.

### 1.1. Hydrocarbon Release Response Interface

#### 1.1.1 Communications Offshore

In the event of a hydrocarbon release to sea, (see **Schiehallion OPEP ROFF 1.5** and **ROFF 1.6** for field hydrocarbon inventories) the ERRV Vessel Master or BP Work Site Representative (if present at the field) will notify the BP response organisation through the Dyce Control Room (“DCR”) of such an event. Initial notifications will be completed onshore by the DCR and confirmed to the BP IMT if mobilised. The ePON1 will be completed offshore by either the ERRV Vessel Master or BP Work Site Representative (**ROff 1.12 ePON1 –Offshore Reporting**). Alternatively if the Oil Portal is unavailable the PON1 may be completed offshore and sent to the DCR who will subsequently forward to the relevant authorities in accordance with the **Schiehallion OPEP - ROff 1.11, Notification Matrix**. In addition to the authorities detailed in **ROff 1.11**, Marine Scotland will also receive a copy of the PON1.

Regulatory Body	Spill Criteria in Tonnes			Tel No	Fax No
	< 1	1 – 25	> 25		
<b>Marine Scotland</b> Submit PON1 for all spills. See note <sup>1</sup>				N / A	01224 295524
Revert to fax if the ePON1 is unavailable.					

#### 1.1.2 Communications Onshore

Once mobilised, the BP IMT will manage all communications to and from statutory authorities, the ERRV and any other vessel in the field at the relevant time, surrounding installations and response contractors e.g. OSRL (as per the **Schiehallion OPEP**). All command decisions concerning strategies,

<sup>1</sup>The BP onshore response team will undertake any required telephone notifications with Marine Scotland as appropriate.



mobilisation and movement of resources will be decided by the BP IMT in conjunction with the relevant authorities.

**1.1.3 Nearby Installations**

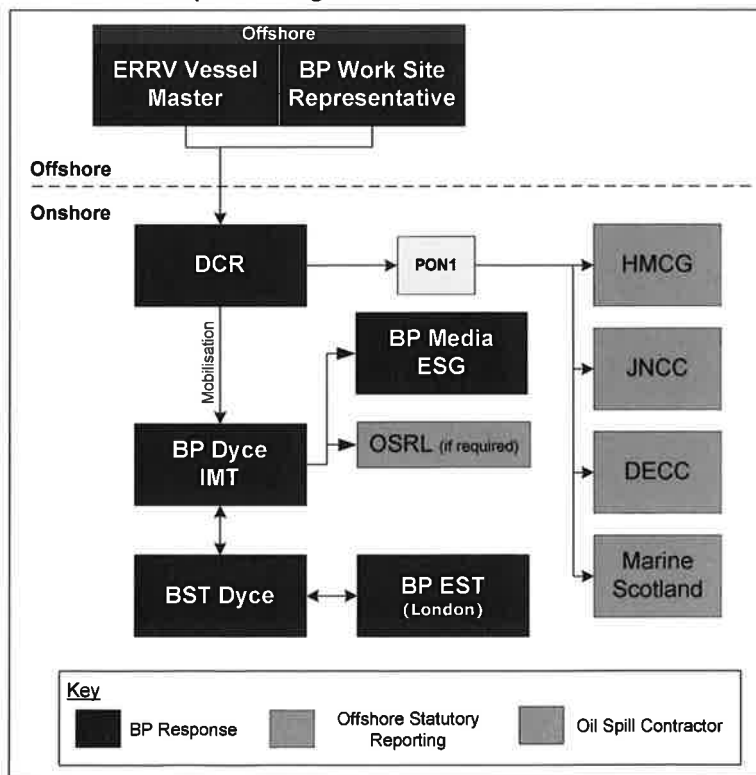
Asset	Company	Contact Details
Foinaven	BP	*****REDACTED*****
Clair	BP	*****REDACTED*****

**1.1.4 Oil Spill Response Limited Capability Statement**

OSRL Aerial Surveillance & Dispersant Spraying Capability Statement	Mobilised By	Further Details
Tier 2 & 3 response services such as the UKCS aerial surveillance service and aerial dispersant capability is provided by Oil Spill Response Limited. To mobilise these services call+44 (0) 2380 331551 and ask for the Duty Manager. (to be done by the Onshore IMT)	BP Dyce IMT	For more details on these services including specific response times follow the link below: <a href="http://www.oilspillresponse.com/activate-us/ukcs-capability-statement">http://www.oilspillresponse.com/activate-us/ukcs-capability-statement</a>

**1.2. BP IMT Activation**

In the event of a hydrocarbon release to sea from the Schiehallion Field the ERRV Vessel Master or BP Work Site Representative, if present in the field, will contact BP Dyce Control Room (“DCR”) \*\*\*\*\*REDACTED\*\*\*\*\*. The DCR is a 24 hour manned facility, which will in turn notify the BP IMT Duty Manager. Once the extent of the event is known, the BP IMT Duty Manager will either fully or partially mobilise the BP Duty IMT via pager. As a minimum, this will include the DPO. Once assembled, the BP IMT Manager will assume overall command. The diagram below illustrates the initial offshore response notification chain that mobilises the onshore response organisation.





### 1.3. Well Intervention Vessel / MODU Activities within the Schiehallion Field

Any work to be carried out by Well Intervention Vessel or Mobile Offshore Drilling Unit within the Schiehallion Field will be detailed in a separate Addendum covering the specific scope of work and associated communications roles and responsibilities and pathways.

### 1.4. ERRV Details

ERRV Details	
ERRV Name	Vos Vigilant
ERRV Owner	Vroon Offshore
ERRV Diesel Inventory	555 m <sup>3</sup>
Dispersant Type & Volume	10m <sup>3</sup> of Type 2/3

# Petroleum Operations Notice No.1

Pro-forma for reporting Oil and Chemical Spills/discharges from Offshore Installations and Pipelines

**Fax To:**

**Aberdeen Coastguard Stn** Fax: 01224 575920 (Alternative Fax No: 01224 212862)(Telephone Nearest MRCC Station)  
**DECC Aberdeen** Fax: 01224 254100 (Emergency Only - Tel 01224 254058/Out of hours – 0207 215 3505/3234)  
**JNCC** Fax: 01224 896170 (and other SNCA's as per PON1 Guidance and/or Oil Pollution Emergency Plan)

<b>Identity of Observer/Reporter</b>		
<b>Full Name:</b>		<b>Organisation/Company:</b>
<b>Contact Telephone No:</b>		<b>Contact E-Mail:</b>
<b>Incident Details</b>		
<b>Operator/Organisation/Company Responsible for Incident:</b>		
<b>Date of Incident:</b>		<b>Time of Incident:</b>
<b>Installation/Facility:</b>	<b>Fixed / Mobile</b> (delete as applicable)	<b>Field Name:</b>
<b>Latitude:</b>	<b>Longitude:</b>	<b>Quad &amp; Block No.:</b>
<b>Oil Release / Chemical Release or Permitted Discharge Notification (tick below and complete column details as applicable)</b>		
<b>Oil Release Notification:</b> <input type="checkbox"/>	<b>Chemical Release Notification:</b> <input type="checkbox"/>	<b>Permitted Discharge Notification:</b> <input type="checkbox"/>
<b>Max Released (tonnes):</b>	<b>Quantity Released (kg):</b>	<b>Max oil discharged (tonnes):</b>
<b>Min Released (tonnes):</b>	<b>Chemical Name:</b>	<b>Min oil discharged (tonnes):</b>
<b>Type of Oil:</b>	<b>Chemical Use:</b>	<b>Type of Oil:</b>
<b>Tier of Response (1,2 or 3):</b> (As per Oil Pollution Emergency Plan)	<b>% oil if OBM or base oil:</b>	<b>Oil Conc. in discharge:</b>
	<b>Warning label:</b>	<b>Discharge rate m<sup>3</sup>/hr:</b>
<b>Appearance:</b>	<b>Appearance:</b>	<b>Appearance:</b>
<b>Approx. release area on sea surface (m<sup>2</sup> or km<sup>2</sup>):</b>	<b>Approx. release area on sea surface (m<sup>2</sup> or km<sup>2</sup>):</b>	<b>Approx. sheen area on sea surface (m<sup>2</sup> or km<sup>2</sup>):</b>
<b>Is Release Ongoing? YES / NO (If YES PON1 must be updated &amp; reported each 24 hr period unless otherwise directed by DECC/MCA)</b>		
Release since last report (tonnes):		Total Release to date (tonnes):
<b>Source of pollution:</b>		
<b>Cause of pollution:</b>		
<b>Steps taken to prevent re-occurrence/respond to incident:</b>		
<b>Release likely to reach Median line YES / NO : Shore YES / NO If YES approx location/time:</b>		
<b>Photographs taken:</b> YES / NO		<b>Samples taken for Analysis:</b> YES / NO
<b>Weather Conditions</b>		
<b>Wind Speed (knots):</b>		<b>Wind Direction (0-360<sup>0</sup>):</b>
<b>Beaufort Scale (1-12):</b>		<b>Wave Height (metres):</b>

**Intentionally Left Blank**