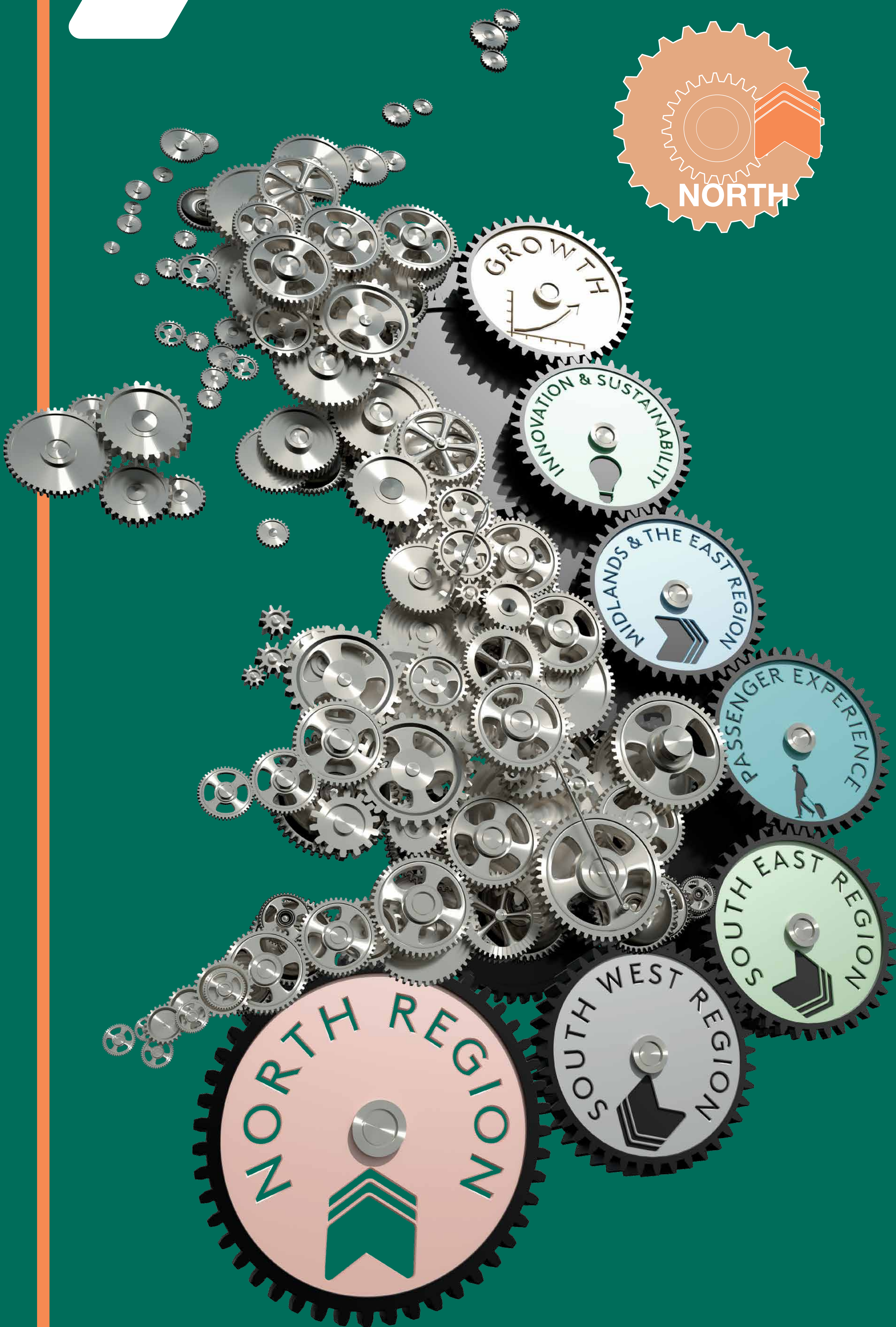




Moving Britain Ahead



- We established Transport for the North to bring together transport authorities in the North of England and worked with them to set out plans to revolutionise travel in the north. The 'Northern Transport Strategy' is designed to connect up the north, create a single economy and allow northern towns and cities to pool their strengths.
- Over £1bn of investment for rail in the North, including electrification and delivery of the Northern Hub, will increase capacity and improve connectivity between Liverpool, Manchester, Leeds, Newcastle and Sheffield. The North of England programme is part of the Government's long-term plan to rebalance the economy and boost growth across the country.
- We've laid the foundations for delivery of HS2 – Britain's new North-South railway – setting out a clear strategy and winning Parliamentary backing. HS2 will help rebalance our economy – underpinning up to 400,000 jobs and generating over £2 of benefits for every £1 spent – with the North and Midlands benefiting more than London.
- Electrification in the North of England will help make journeys faster, quieter and more reliable. Electric trains started running between Manchester Airport and Scotland in May 2014; between Liverpool and Manchester Airport in March 2015.
- Modernising and improving facilities for passengers of the Tyne and Wear Metro through a £350m investment that includes refurbished trains and stations.
- A new Hitachi rail vehicle assembly facility at Newton Aycliffe, County Durham, is expected to create hundreds of jobs locally and support thousands more across the UK supply chain.
- Bidders for Northern franchise are required to provide plans to replace outdated Pacer trains.
- Improving access to ports through highway schemes such as the A160/A180 and A63 improvement schemes in the Humber and the A5036 Princess Way and Heyham Link Road schemes in the North West.
- Improving access to airports through schemes such as the A6 to Manchester Airport Relief Road, which will also serve the Airport City Enterprise Zone, relieve congestion and help create up to 13,000 new jobs.
- Significant funding and flexibility has been awarded to the Leeds City Region for its £1bn West Yorkshire plus York Transport Fund. Schemes planned to benefit from the fund include a programme of junction improvements on A1237 York Outer Ring Road and Wakefield Eastern Relief Road.
- Improving east-west linkages across the Pennines by investing in Smart Motorways that will add an extra running lane from junction 8 of the M60 to Junction 20 of the M62 in the North West and between junctions 25 and 30 of the M62 in West Yorkshire.

- Investing in better travel choices for tourists and local people by electrifying the rail line in the Lake District between Windermere and the West Coast Main Line along with a £4.9m investment for sustainable transport in the National Park.
- Improving facilities for cycling in Newcastle, Manchester and Leeds city region – major Northern cities benefitting from a £55m investment in cycle cities. This work includes segregated cycle paths and new links to join up existing networks.



Department
for Transport