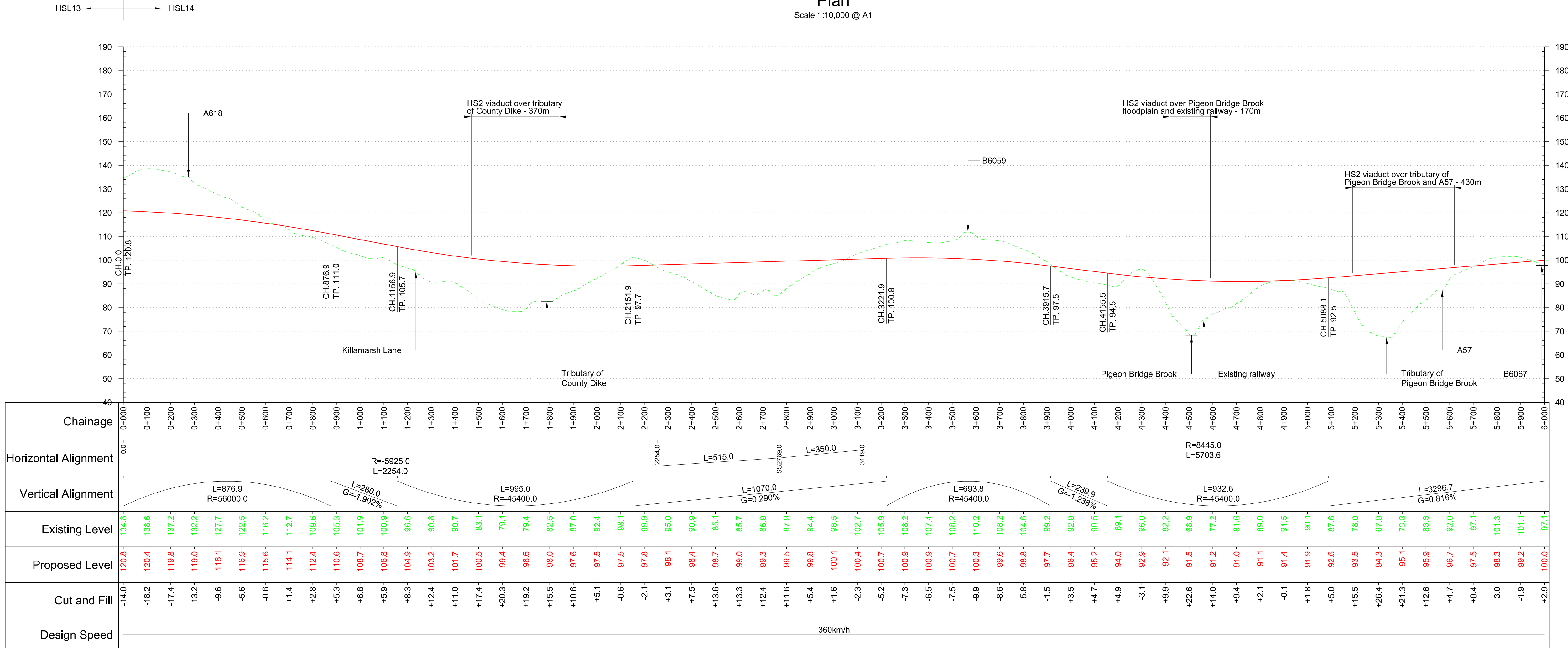
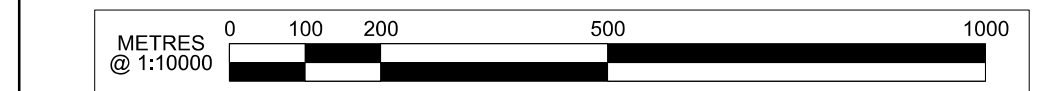


Plan  
Scale 1:10,000 @ A1



Profile  
Scale H:1:10,000 V:1:1000 @ A1

**Fit for Acceptance**



P01	First Issue	JV 17/06/16	AR 20/06/16	MM 20/06/16	
Rev	Description	Drawn	Checked	Con App	HS2 App

HS2 accepts no responsibility for any circumstances which arise from the reproduction of this document after alteration, amendment or abbreviation or if it is issued in part or issued incompletely in any way.

© Crown Copyright and database right 2015. All rights reserved. Ordnance Survey Licence number 100049190

© Crown Copyright material is reproduced with the permission of Land Registry under delegated authority from the Controller of HMSO.

This material was last updated on 2015 and may not be copied, distributed, sold or published without the formal permission of Land Registry. Only an official copy of a title plan or register obtained from the Land Registry may be used for legal or other official purposes.

Scale with caution as distortion can occur.

- Key Environmental Features Legend**
- World Heritage Site
  - Ramsar
  - Special Areas of Conservation
  - Special Protection Areas
  - SSSI
  - National Nature Reserves
  - Area of Outstanding Natural Beauty
  - National Park
  - Major Development Sites
  - Scheduled Monuments
  - Registered Parks and Gardens
  - Historical Battlefields
  - Active and/or Authorised Landfill
  - Historical Landfill
  - Flood Zones
  - Listed Building Grade I
  - Listed Building Grade II\*
  - Listed Building Grade II

- Legend**
- Track Centrelines
  - Viaduct
  - Tunnel
  - Fully Retained Cutting/Fill
  - Major Contour
  - Ground Profile
  - Track Profile
  - Minor Contour
  - Node
  - Engineering Earthworks
  - Railway Cutting
  - Railway Embankment
  - HS2 Depot/Station Operational Boundary

Registered in England  
Registration No. 06791686  
Registered office:  
One Canada Square,  
London, E14 5AB

Creator/Organiser  
**Mott MacDonald**

Zone	Leeds Leg Central
Design Stage	Pre-Consultation
Drawing Title	HSL14 M18 / Eastern Route
Sheet	Sheet 1 of 3

Project/Contract		West Midlands to Leeds Route	
Discipline/Function		Railway Track	
Drawn	Checked	Approved	
JV	AR	MM	
Date	Scale	Size	
17/06/2016	1:10000	A1	
Drawing No.		Rev.	
C321-MMD-RT-DPP-120-581401		P01	