



Skills Funding Agency

Apprenticeship qualification achievement rates 2014/2015

Producing the dataset and data definitions

Date of issue 18 February 2016

Contents

Section 1 – Introduction	2
Purpose of document	2
Purpose of qualification achievement rates	2
Apprenticeship qualification achievement-rate methodology	3
Apprenticeship business rules	3
Exclusions from Apprenticeship qualification achievement rates	4
Section 2 – Processing standard files	6
Process flow diagram	6
Identifying Apprenticeship programme aims	7
Processing further-education college mergers	7
Processing learner reference number changes	8
Merging programme aims across years	8
Qualification achievement-rate calculations	9
Calculating the percentage of leavers below the minimum standards threshold	10
Further Information	11
Section 3 – Contents of the qualification achievement-rates dataset for records created from the ILR	12
Source or derivation of fields in the qualification achievement-rates dataset	12
Section 4 – Contents of the qualification achievement-rates dataset for records created from the LEOP dataset	22
Source or derivation of fields in the qualification achievement-rates dataset	22
Changes from the 2013/2014 document	30
Changes made from version 1.0 (dated 16 June 2015)	32
Changes made from version 1.1 (dated 18 November 2015)	33

Skills Funding Agency

Cheylesmore House, Quinton Road, Coventry, CV1 2WT

T 0845 377 5000 www.skillsfundingagency.bis.gov.uk

A partner organisation of the Department for Business, Innovation & Skills

Section 1 – Introduction

Purpose of document

1. This document provides technical information about how information provided in Individualised Learner Records and Large Employer Outcome Pilot records is processed to produce the qualification achievement-rates dataset from which the Apprenticeship 2014/2015 qualification achievement-rate and minimum-standards reports are produced. This document also provides information about where the information included in the qualification achievement-rate and minimum-standards reports comes from.
2. In preparation for the introduction of a broader range of success measures in the future the name of qualification success rates has changed to qualification achievement rates.
3. A number of changes have been made to the qualification achievement-rates dataset.
 - The implementation of changes to the qualification achievement-rate business rules that affect the creation of the achievement-rates dataset or the calculation of achievement rates.
 - The identification of the following types of aims as exclusions:
 - ~~Planned breaks;~~
 - ~~Transfers;~~
 - Access to Apprenticeship aims where the learner is not employed;
 - Classroom learning provision reported through the employer responsive funding stream;
 - Frameworks which are not funded;
 - Frameworks where the learner has withdrawn from the framework within the funding qualifying period, and the learning aim is not achieved.
 - The identification of the subcontractor of the main assessment aim or competency aim.
 - Changes to the derivations for some fields.
4. The changes to the qualification achievement-rates dataset from that produced for the 2013/2014 qualification success rates are explained in paragraphs 51 to 54.

Purpose of qualification achievement rates

5. The Apprenticeship qualification achievement rate is a measure of the quality of the Apprenticeship programmes that a provider ran in a particular academic year. Qualification achievement rates are used to identify provision that falls below the minimum quality standards. Provision which falls below the minimum quality standards is one of the factors, as identified in the document 'New Challenges, New Chances' (at www.gov.uk/government/uploads/system/uploads/attachment_data/file/145449/11-1213-new-challenges-new-chances-implementing-further-education-reform.pdf), that will prompt us to take action under our Approach to Intervention process (at <https://www.gov.uk/government/publications/sfa-minimum-standards-2014-to-2015>).
6. Qualification achievement rates are used in the National Achievement Rate Tables to show apprentices and employers the relative quality of provision. The Office for Standards in Education, Children's Services and Skills (Ofsted) also use them as part of their inspection process.

Apprenticeship qualification achievement-rate methodology

7. The apprenticeship qualification achievement-rate methodology has two qualification achievement-rate measures – the ‘overall’ qualification achievement rate and the ‘timely’ qualification achievement rate.
8. We use the overall qualification achievement rate to formally assess whether a provider meets minimum quality standards.
9. The overall qualification achievement rate is based on the hybrid end year (the actual end year or the planned end year of an apprenticeship framework, whichever is later). The apprenticeship frameworks considered for the 2014/2015 overall qualification achievement rate are those that were either ended or were planned to end in the academic year ending 31 July 2015.
10. The timely qualification achievement rate is based on the planned end year of an apprenticeship framework. The apprenticeship frameworks considered for the 2014/2015 timely qualification achievement-rate measure are those with a planned end date in the academic year ending 31 July 2015. In the timely qualification achievement-rate measure an apprenticeship framework is counted as achieved if the achievement date is:
 - on or before the planned end date; or
 - no more than 90 days after it.
11. There can be a delay between an Apprenticeship framework being completed and the notification that the Apprenticeship framework has been achieved. To make sure that all achievements that count towards the overall and timely achievement rate are included, information from return R04 of the 2015/2016 Individualised Learner Record (ILR) is used to identify frameworks that have been achieved ~~no more than 90 days after their planned end date~~ but which could not be recorded in the final return of the 2014/2015 ILR. For the timely achievement rate the frameworks must have been achieved no more than 90 days after their planned end date.
12. Providers who no longer have a contract with us for 2015/2016 cannot provide achievement information in R04 of the 2015/2016 ILR return. This can reduce their timely qualification achievement rate.
13. Providers without a contract because their previous contract that was less than the minimum contract level, can become subcontractors. For those providers who became subcontractors for 2015/2016, the achievement information is obtained from the prime provider’s R04 return, if:
 - the prime provider has entered the subcontractor’s UKPRN in the ILR field ‘UKPRN in previous year’; and
 - the Learner Reference Number on the prime provider’s aim record is the same as that on the subcontractor’s aim record.

Apprenticeship business rules

14. We produce the qualification achievement-rate business rules (at <https://www.gov.uk/government/publications/sfa-qualification-achievement-rate-2014-to-2015>) that describe how the qualification achievement rates will be calculated, and which apprenticeship frameworks will not be included in the qualification achievement-rate calculations.
15. A number of apprenticeship frameworks are not included when calculating the qualification achievement rates in order to make the results more credible and

appropriate. The main reasons for not including a particular apprenticeship framework are that it:

- would not be fair to the provider (for example, if qualification achievement rates would be affected by circumstances beyond the provider's control);
- is not funded by us or by the Education Funding Agency; or
- relates to an Access to Apprenticeship framework and the learner is not employed.

Exclusions from Apprenticeship qualification achievement rates

16. The report pack for the qualification achievement-rate reports includes a file containing the apprenticeship frameworks that are not included in the qualification achievement-rate calculations. This file also shows the reason why they are not included.

17. The way that the apprenticeship frameworks that are not included in the calculations (excluded frameworks) are identified is described below.

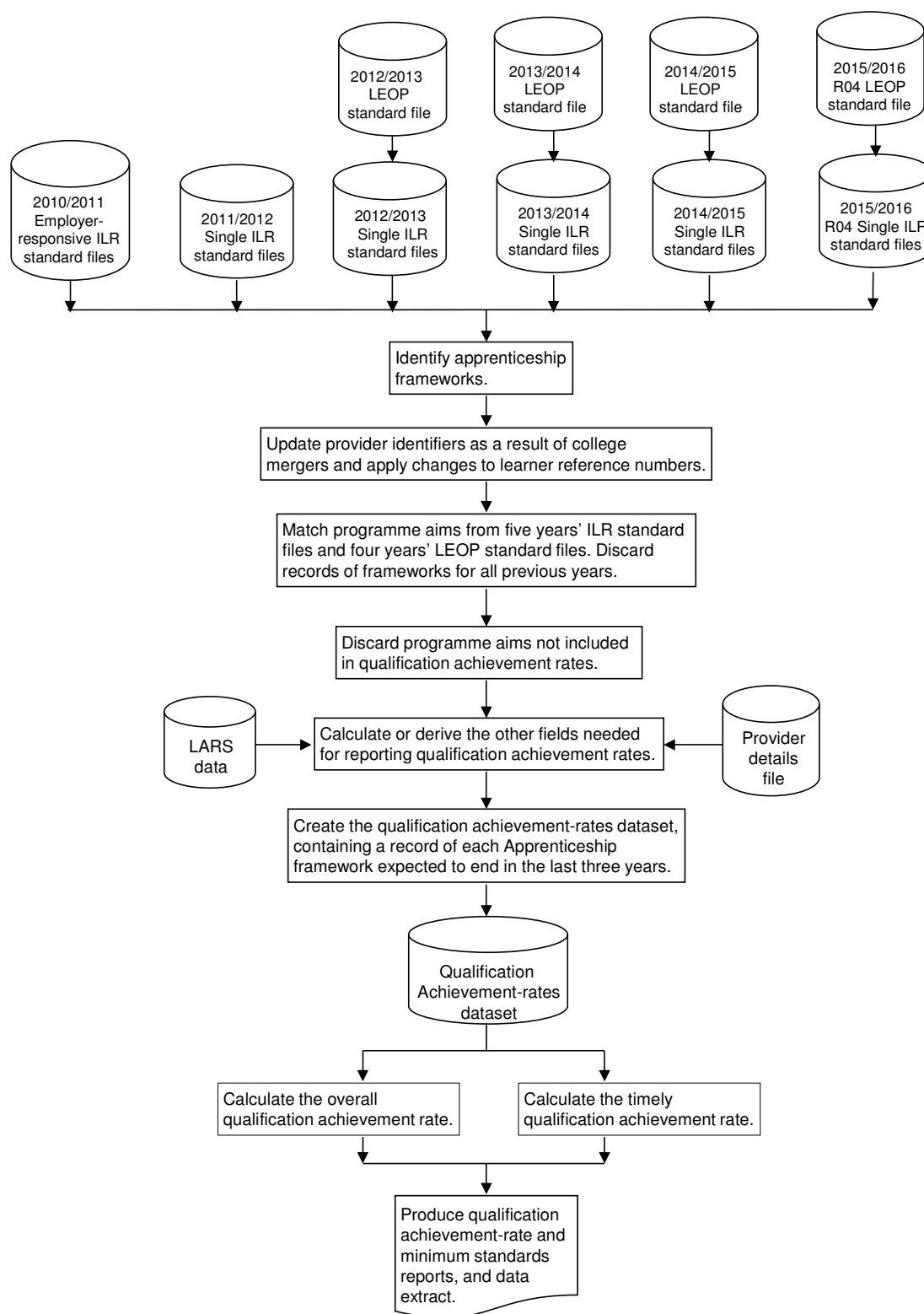
Type of excluded framework	Rules for identifying the excluded framework
Frameworks where an apprentice has transferred to a new provider because of intervention from us or the Education Funding Agency.	For ILR files for 2010/2011 to 2012/2013, programme aims where P_Prog_Status is 10 and Withdrawal Reason is not 41. For ILR files for 2013/2014, programme aims where P_ProgStatus is 10 and Withdrawal Reason is not 41. For ILR files for 2014/2015 onwards, programme aims where D_SuccessRateStatus is 10 and Withdrawal Reason is not 41.
For the overall qualification achievement rate, frameworks where the apprentice has transferred to a different programme with the same provider.	For ILR files for 2010/2011 to 2012/2013, programme aims where P_Prog_Status is 7 or 8 and the Learning Actual End Date (A31) is before 1st August of the relevant year. For ILR files for 2013/2014, programme aims where P_ProgStatus is 7 or 8 and the Learning Actual End Date (A31) is before 1st August of the relevant year. For ILR files for 2014/2015 onwards, programme aims where D_SuccessRateStatus is 7 or 8 and the Learning Actual End Date (A31) is before 1st August of the relevant year.
For the timely qualification achievement rate, frameworks where the apprentice has transferred to a different programme with the same provider before the planned end date or no more than 90 days after it.	For ILR files for 2010/2011 to 2012/2013, programme aims where P_Prog_Status is 7 or 8 and the Learning Actual End Date (A31) is on or before the Learning Planned End Date (A28), or no more than 90 days after it. For ILR files for 2013/2014, programme aims where P_ProgStatus is 7 or 8 and the Learning Actual End Date (A31) is on or before the Learning Planned End Date (A28), or no more than 90 days after it. For ILR files for 2014/2015 onwards, programme aims where D_SuccessRateStatus is 7 or 8 and the Learning Actual End Date (A31) is on or before the Learning Planned End Date (A28), or no more than 90 days after it.
For the overall qualification achievement rate, frameworks where the apprentice has temporarily withdrawn from the framework due to an agreed break in learning.	For ILR files for 2010/2011 to 2012/2013, programme aims where P_Prog_Status is 11 or 12. For ILR files for 2013/2014, programme aims where P_ProgStatus is 11 or 12. For ILR files for 2014/2015 onwards, programme aims where D_SuccessRateStatus is 11 or 12.

Type of excluded framework	Rules for identifying the excluded framework
For the timely qualification achievement rate, frameworks where the apprentice has temporarily withdrawn from the framework due to an agreed break in learning before the planned end date or no more than 90 days after it.	<p>For ILR files for 2010/2011 to 2012/2013, programme aims where (P_Prog_Status) is 11 or 12 and the Learning Actual End Date (A31) is on or before the Learning Planned End Date (A28) or no more than 90 days after it.</p> <p>For ILR files for 2013/2014, programme aims where (P_ProgStatus) is 11 or 12 and the Learning Actual End Date (A31) is on or before the Learning Planned End Date (A28) or no more than 90 days after it.</p> <p>For ILR files for 2014/2015 onwards, programme aims where (D_SuccessRateStatus) is 11 or 12 and the Learning Actual End Date (A31) is on or before the Learning Planned End Date (A28) or no more than 90 days after it.</p>
Frameworks where the learner has withdrawn from the framework within the funding qualifying period, and the learning aim is not achieved.	<p>Programme aims where:</p> <ul style="list-style-type: none"> the planned duration is 168 days or more; the actual duration is less than 42 days; and the Completion Status (A34) is 3 (withdrawal). <p>Programme aims where:</p> <ul style="list-style-type: none"> the planned duration is between 14 and 167 days; the actual duration is less than 14 days; and the Completion Status (A34) is 3 (withdrawal). <p>The planned duration of the aim, in days, is the difference between the Learning Start Date (A27) and the Learning Planned End Date (A28).</p> <p>The actual duration of the aim, in days, is the difference between the Learning Start Date (A27) and the Learning Actual End Date (A31).</p>
Frameworks with a planned end date after the last day of the QAR reporting period (31st July 2015).	Programme aims where the Learning Planned End Date (A28) is later than 31 July 2015.
Apprentices who are on an Access to Apprenticeship scheme but are not employed.	<p>For ILR files for 2012/2013, programme aims where any of the Learning Delivery Monitoring Codes (A46a, A46b or A46c) is 127 and A_ATA_EMP is not 1.</p> <p>For ILR files for 2013/2014 onwards, programme aims where any of the Learning Delivery Monitoring Codes (A46a, A46b, A46c or A46d) is 127 and D_AccToEmpEmpd is not 1.</p>
Classroom learning provision reported through the employer responsive funding stream.	Programme aims where any of the Learning Delivery Monitoring Codes (A46a, A46b, A46c or A46d) is 125.
Frameworks which are not funded by us.	Programme aims where the Funding Model (A10) is equal to 99 in all years.

Section 2 – Processing standard files

Process flow diagram

18. This flow diagram below shows how Individualised Learner Record (ILR) and Large Employer Outcome Pilot (LEOP) information for multiple academic years is processed to produce the qualification achievement-rates dataset, which is the source of the information used for the qualification achievement-rate and minimum-standards reports.



Identifying Apprenticeship programme aims

19. The method of identifying Apprenticeship programme aims for 2010/2011 in the ILR is different to the method for 2011/2012 onwards. This is a result of the employer responsive ILR collection being replaced with the single ILR for 2011/2012. The employer responsive collection contained only Apprenticeship programme aims and workplace learning aims, whereas the single ILR also includes classroom learning aims.
20. The method for identifying Apprenticeship programme aims for each academic year in the ILR and LEOP datasets is.

Source and year	Rules for identifying Apprenticeship programme aims
ILRs for 2010/2011	Programme aims where: <ul style="list-style-type: none">the Data Set Identifier Code (A10) is 35; andthe Programme Type (A15) is 2, 3 or 10.
ILR for 2011/2012 and 2012/2013	Programme aims where: <ul style="list-style-type: none">the Aim Type is 1; andthe Programme Type (A15) is 2, 3, 10, 20 or 21.
ILR for 2013/2014 onwards	Programme aims where: <ul style="list-style-type: none">the Aim Type is 1; andthe Programme Type (A15) is 2, 3, 10, 20, 21, 22 or 23.
LEOP for 2011/2012 and 2012/2013	Programme aims where: <ul style="list-style-type: none">the Aim Type is 1; andthe Programme Type is 2, 3, 10, 20 or 21.
LEOP for 2013/2014 onwards	Programme aims where: <ul style="list-style-type: none">the Aim Type is 1; andthe Programme Type is 2, 3, 10, 20, 21, 22 or 23.

21. The main aims or component aims of an apprenticeship programme are also selected from the ILR in order to identify the subcontractor of the competency aim. These aims are then discarded and are not held on the achievement-rate dataset.
22. The method for identifying the main assessment learning aim or the component aims of an apprenticeship programme aims for each academic year in the ILR dataset is:

Source and year	Rules for identifying apprenticeship main assessment or component aims
ILRs for 2010/2011	The main assessment aim cannot be identified.
ILR for 2011/2012 and 2012/2013	Aims where: <ul style="list-style-type: none">the Aim Type is 2 (main learning aim); andthe Programme Type (A15) is 2, 3, 10, 20 or 21.
ILR for 2013/2014 onwards	Aims where: <ul style="list-style-type: none">the Aim Type is 3 (component aim); andthe Programme Type (A15) is 2, 3, 10, 20, 21, 22 or 23.

Processing further-education college mergers

23. In the year after two or more further-education colleges merge to form a new college, the qualification achievement-rate methodology combines the programme aims for all colleges in the previous two years under the new merged college and produces qualification achievement rates for the new college. This allows the new college to compare their current year's qualification achievement rate with a comparable qualification achievement rate for the previous two years.

24. Programme aims are combined by changing the provider numbers (UPIN and UKPRN) of the old colleges to be that of the new college's provider number. The original provider numbers are kept in the qualification achievement-rates dataset in the UPIN_orig and UKPRN_orig fields.
25. Note that this merger process only applies to further-education colleges. It does not apply to the mergers of any other types of provider (for example, private training providers).

Processing learner reference number changes

26. The learner reference number is used when matching programme aims across years. The learner reference number is assigned by the provider, and providers (or their software) will occasionally change them, either within an academic year or between years.
27. If the learner reference number is changed, the process of matching programme aims does not work correctly and two records are created in the qualification achievement-rates dataset for the same programme aim – one using the old learner reference number and one the new learner reference. As the programme aim from the earlier year's ILR file will not have any achievement data, it will reduce the provider's qualification achievement rate unless this matching issue is addressed.
28. To address this issue, we introduced the learner reference number mapping spreadsheet which allowed a provider to provide a cross reference mapping from the old and new learner reference numbers. For 2013/2014 the requirement to complete the spreadsheet was replaced by a mechanism where the provider completes the 'Learner reference in the previous year' field in the ILR.
29. The information in the learner reference number mapping spreadsheet and the 'Learner reference in the previous year' field is used to change the learner reference numbers for previous years to the latest learner reference number. The original learner reference number is kept in the qualification achievement-rates dataset in the LearnRefNumber_orig field.

Merging programme aims across years

30. Many apprenticeship programmes take more than one year to complete. This means that the same programme aim for a particular apprentice can appear in more than one ILR or LEOP file. Programme aims can be completed earlier than planned, and some programme aims are not marked as completed.
31. As apprenticeship qualification achievement rates are based on the programme aim's planned end date, the ILR files from all years have to be merged together in order to identify all the programme aims that are planned to be completed in the years being reported on.
32. The ILR files and the LEOP files for an academic year are combined into a single file before the yearly files are merged.
33. Various combinations of variables are used to make sure that the correct programme aims are matched. The matching process uses Provider Number (L01), Learner Reference Number (L03), Programme Type (A15) and Framework Code (A26) together with the following combinations, in the following sequence.

- Learning Start Date (A27), Learning Planned End Date (A28) and Achievement Date (A40)
 - Learning Start Date and Learning Planned End Date
 - Learning Start Date and Achievement Date
 - Learning Start Date
34. A final match of Provider Number, Learner Reference Number, Programme Type and Framework Code is made when matching data to 2013/2014 from previous years.
35. When matching between ILR data files for 2013/2014 to 2014/2015, and 2014/2015 to 2015/2016 the final match is Provider Number, Learner Reference Number, Programme Type, Framework Code and Learning Start Date.
36. Once programme aim records have been matched, those from previous years are discarded, leaving just the latest information of the programme aim in the qualification achievement-rates dataset.

Qualification achievement-rate calculations

37. The main fields from the qualification achievement-rates dataset that are used in calculating the overall qualification achievement rates are as follows.
- Hybrid End Year (P_Hybridendyr).
This field is the actual learning end year (P_Actendyr) or the expected learning end year (P_Expendyr), whichever is later.
 - P_Frm_Ach_Overall
This field is used in the overall qualification achievement-rate calculation and indicates whether a programme aim has been achieved.
 - P_Count_Overall
This field is used in the overall qualification achievement-rate calculation and indicates whether the programme aim has been completed.
38. For a given academic year the overall qualification achievement-rate percentage is calculated as follows.

$$\frac{\text{Number of programmes that have been achieved at any time}}{\text{Number of programmes that have finished}} \times 100$$

In terms of the variables on the qualification achievement-rates dataset, for a given hybrid end year (P_Hybridendyr) the overall qualification achievement-rate percentage is calculated as follows.

$$\frac{\text{Number of programme aims where P_Frm_Ach_Overall is 1}}{\text{Number of programme aims where P_Count_Overall is 1}} \times 100$$

39. The main fields from the qualification achievement-rate dataset that are used in calculating the timely qualification achievement rate are as follows.
- Expected End Year (P_Expendyr)
This field is the first calendar year of the academic period the Learning Planned End Date (A28) falls in. For example, if the Learning Planned End Date falls within the 2012/2013 academic year, P_Expendyr is '2012'.

- **P_Frm_Ach_Timely**
This field is used in the timely qualification achievement-rate calculation and indicates whether a programme aim has been achieved.
- **P_Count_Timely**
This field is used in the timely qualification achievement-rate calculation and indicates whether the programme aim was expected to be completed in a particular academic year.

40. For a given academic year the timely qualification achievement-rate percentage is calculated as follows.

$$\frac{\text{Number of programmes that have been achieved by their planned end date or within 90 days after it}}{\text{Number of programmes expected to be finished}} \times 100$$

In terms of the variables on the qualification achievement-rates dataset, for a given expected end year (P_Expendyr) the timely qualification achievement-rate percentage is calculated as follows.

$$\frac{\text{Number of programme aims where P_Frm_Ach_Timely is 1}}{\text{Number of programme aims where P_Count_Timely is 1}} \times 100$$

Calculating the percentage of leavers below the minimum standards threshold

41. Minimum standards uses the overall qualification achievement rate and uses data for hybrid end year 2014/2015 only.
42. The first stage in working out the percentage of provision that is below minimum standards is to identify whether the all-age overall qualification achievement rate for the apprenticeship level of an apprenticeship framework is below the minimum standards threshold. For 2014/2015 this threshold is 55% for all apprenticeship levels.
43. If the all-age overall qualification achievement rate of the apprenticeship level of an apprenticeship framework is below the minimum standard threshold, all the programme aims for that framework and apprenticeship level are classified as being below the minimum standards threshold.
44. The programme aims below the minimum standard threshold are then added together for all apprenticeship frameworks and apprenticeship levels to give a figure for the total number of programme aims below the minimum standards threshold for the provider.
45. The percentage of programme aims below the minimum standard threshold is then calculated as follows.

$$\frac{\text{The total number of programme aims below the minimum standard threshold}}{\text{The total number of learning aims where P_Count_Overall is 1}} \times 100$$

46. The percentage of programme aims below the minimum standard threshold is then compared to the minimum standards tolerance level, which is 40%.
47. If the percentage of programme aims below the minimum standard threshold is equal to or greater than the minimum standards tolerance, the provider's apprenticeship provision

is below minimum standards and there may be formal intervention by us, as set out in the Approach to Intervention process (at www.gov.uk/government/publications/sfa-when-and-how-the-sfa-will-formally-intervene-with-providers).

Further Information

48. If you need more information you can phone the service desk on 0370 267 0001 or email servicedesk@sfa.bis.gov.uk . Please provide a detailed explanation of your query.

Section 3 – Contents of the qualification achievement-rates dataset for records created from the ILR

Source or derivation of fields in the qualification achievement-rates dataset

49. The three reference files used in some of the derivations are as follows.

- a) The 2014/2015 Framework lookup file – this file holds programme-aim information from the Learning Aims Reference System (LARS) and the Learning Aims Reference Application (LARA), as at the ‘hard close’ of the 2014/2015 ILR (25 October 2015).
- b) The 2014/2015 Provider Details file – this file holds providers’ details from the Provider and Organisation Information Management System (PIMS), as at 31 July 2015.
- c) The look-up used to determine the delivery region and delivery local authority of a delivery location postcode is obtained from the National Statistics Postcode Lookup (UK) May 2015. This can be downloaded from the Office Of National Statistics website (at <https://geoportal.statistics.gov.uk/geoportal/catalog/search/resource/details.page?uuid=%7BAFA00CD3-5F55-4980-8EC5-D94C68CED977%7D>)

Data item	Description	Data values	Source (ILR)	Derivation
A2A_Excl	Indicates that the programme aim is an Access to Apprenticeship aim but the apprentice is not employed. Access to Apprenticeship aims where the apprentice is not employed are not included in qualification achievement rates.	0 or 1	Derived	<p>For ILR files for 2010/2011 set to 0.</p> <p>For ILR files for 2011/2012 and 2012/2013, set to 1 if:</p> <ul style="list-style-type: none"> the Data Set Identifier Code (A04) is 35; the Programme Type (A15) is 2, 3, 10, 20 or 21; the National Learning Aim Monitoring Code (A46a, A46b, A46c) is 127; and the Access to Apprenticeship employment status (A_ATA_EMP) is not 1. <p>For ILR files for 2013/2014 onwards, set to 1 if:</p> <ul style="list-style-type: none"> the Data Set Identifier Code (A04) is 35; the Programme Type (A15) is 2, 3, 10, 20, 21, 22 or 23; the National Learning Aim Monitoring Code (A46a, A46b, A46c or A46d) is 127; and the Access to Apprenticeship employment status (D_AccToAppEmpd) is not 1. <p>Otherwise set to 0.</p>
Age_Band	A banding of the age on the start of the apprenticeship programme.	1 = 16 to 18 2 = 19 to 23	Derived	<p>Set to 1 if D_AgeAimStart is 0 to 18.</p> <p>Set to 2 if D_AgeAimStart is 19 to 23.</p>

Data item	Description	Data values	Source (ILR)	Derivation
		3 = 24 or more		Set to 3 if D_AgeAimStart or 24 or greater, or unknown.
ClassLearn_Excl	Indicates that the programme aim is a classroom learning aim reported through the employer responsive funding stream. Classroom learning aims reported through the employer responsive funding stream are not included in qualification achievement rates.			For ILR files for 2010/2011 set to 0. For ILR files for 2011/2012 and 2012/2013, set to 1 if the Programme Type (A15) is 2, 3, 10, 20 or 21 and there is a Learning Delivery Funding and Monitoring Type of 'LDM' with a Learning Delivery Funding and Monitoring Code (A46a, A46b or A46c) of 125. For ILR files for 2013/2014 onwards, set to 1 if the Programme Type (A15) is 2, 3, 10, 20, 21; 22 or 23 and there is a Learning Delivery Funding and Monitoring Type of 'LDM' with a Learning Delivery Funding and Monitoring Code (A46a, A46b, A46c or A46d) of 125. Otherwise set to 0.
CompStatus	The completion status of the programme aim.		ILR standard files	Set to Completion Status (A34).
D_AchieveRateStatus	The status of the learning aim for calculating qualification achievement rates.		ILR standard files / Derived	For ILR files for 2010/2011 to 2012/2013, set to the value of the ILR derived variable P_Prog_Status . For ILR files for 2013/2014, set to the value of the ILR derived variable P_ProgStatus . For ILR files for 2014/2015 onwards, set to the value of the ILR derived variable D_SuccessRateStatus .
D_AgeAimStart	The age of the apprentice on the start date of the programme aim.		ILR standard files	For ILR files for 2010/2011 to 2012/2013, set to the value of the ILR derived variable A_Agest . For ILR files for 2013/2014 onwards, set to the value of the ILR derived variable D_AgeAimStart .
D_Total_Payment	This is the total of all payments made to the provider over the life of the programme aim. (Note: it is the learning aims that make up an Apprenticeship framework that hold the funding information. There is no funding information held on the programme aim.)		Derived	Enter the sum of the ILR derived variables A_Total_Payment_Y2D (for years 2010/2011 to 2012/2013) and D_TotalPayment_Y2D (for years 2013/2014 onwards) for each of the component aims that make up the Apprenticeship framework, for the years that the programme aim is present on the ILR.
Datasource	The source of the record on the qualification achievement-rates dataset, which is either the ILR or the LEOP dataset.	ILR	Derived	Set to 'ILR'.
DelLocPostCode	The postcode of the delivery location.		ILR standard files	Set to Delivery Location Postcode (A23).

Data item	Description	Data values	Source (ILR)	Derivation
DelLocPostCode_GOR	The delivery location postcode Government office region.		Postcode lookup	Obtained from the National Statistics Postcode Lookup (UK) May 2015.
DelLocPostCode_LocalAuthority	The delivery location postcode local authority district .		Postcode lookup	Obtained from the National Statistics Postcode Lookup (UK) May 2015.
Ethnicity	The apprentice's ethnic background.		ILR standard files	Set to Ethnicity (L12).
Fund_Qual_Excl	Indicates that the learner has withdrawn from a learning aim before the qualifying number of days for funding has been met (Note: the qualifying period for funding aims with a planned duration of less than 14 days is 1 day. Fund_Qual_Excl is always set to 0 for aims with a planned duration of less than 14 days.)	0 or 1	Derived	The planned duration of the aim, in days, is the difference between the Learning Start Date (A27) and the Learning Planned End Date (A28). The actual duration of the aim, in days is the difference between the Learning Start Date (A27) and the Learning Actual End Date (A31). Set to 1 if the planned duration is 168 days or more, the actual duration is less than 42 days and the Completion Status (A34) is 3 (withdrawal). Set to 1 If the planned duration is between 14 and 167 days, the actual duration is less than 14 days and the Completion Status (A34) is 3 (withdrawal). Otherwise set to 0.
FworkCode	Framework code.		ILR standard files	Set to Framework Code (A26).
FworkName	Framework name.		Derived	Set to FworkName from the framework lookup.
L_Disability	The apprentice's disability.		ILR standard files	For ILR files for 2010/2011, set to Disability (L15). For ILR files for 2011/2012 onwards, set to LLDD and Health Problem Code where the LLDD and Health Problem Type is 'DS'.
L_LearnDiff	The apprentice's learning difficulty.		ILR standard files	For ILR files for 2010/2011, set to Learning Difficulty (L16). For ILR files for 2011/2012 onwards, set to LLDD and Health Problem Code where the LLDD and Health Problem Type is 'LD'.
L_PriorPcode	The apprentice's home postcode.		ILR standard files	For ILR files for 2010/2011, set to Home Postcode (L17). For ILR files for 2011/2012 onwards, set to Postcode where Locator Type is 2 and Contact Type is 1.
L_PriorPcode_GOR	The apprentice's home postcode Government office region.		Postcode lookup	Obtained from the National Statistics Postcode Lookup (UK) May 2015.

Data item	Description	Data values	Source (ILR)	Derivation
L_PriorPcode_LocalAuthority	The apprentice's home postcode local authority district .		Postcode lookup	Obtained from the National Statistics Postcode Lookup (UK) May 2015.
LearnActEndDate	The learning actual end date (DDMMYYYY).		ILR standard files	Set to Learning Actual End Date (A31).
LearnAimBelowMS	Indicates whether the programme aim is classified as being below the minimum standards threshold.	0 or 1	Derived	See paragraphs 41 and 47 for details of how the classification below minimum standards is derived.
LearnPlanEndDate	The learning planned end date (DDMMYYYY).		ILR standard files	Set to Learning Planned End Date (A28).
LearnRefNumber	The learner reference number.		ILR standard files	Set to Learner Reference Number (L03).
LearnRefNumberAnon	The anonymised learner reference number.		Derived	The processing that creates the qualification achievement rates dataset assigns a unique anonymised value to each learner.
LearnRefNumber_Orig	The learner reference number of the programme aim before the college merger process was applied to a provider's data.		Derived	See paragraphs 23 to 25 for information on setting this field.
LearnStartDate	The learning start date (DDMMYYYY).		ILR standard files	Set to Learning Start Date (A27).
LLDDHealthProb	Indicates whether the apprentice considers that they have a learning difficulty, disability or health problem.		ILR standard files	Set to LLDD and Health Problem (L14).
Not_Funded_Excl	Identifies whether an Apprenticeship has ever received funding from us. Non funded aims are not included in qualification achievement rates.	0 or 1	Derived	Set to 10 if the Funding Model (A10) is not 99 in any year. Otherwise set to 01 .
Outcome	The learning outcome of the programme aim.		ILR standard files	Set to Outcome Indicator (A35).
P_Actendyr	The actual end year of the programme aim (20__).		Derived	Set to the first calendar year of the academic period the Learning Actual End Date (A31) falls in. (For example, if the Learning Actual End Date falls in the 2013/2014 academic year, P_Actendyr has the value of 2013.)
P_Count_Overall	For the overall qualification achievement-rate measure, this indicates whether the record should be counted towards the overall qualification achievement rate.	0 or 1	Derived	Set to 1 if: <ul style="list-style-type: none"> P_Trans_Overall is 0; P_Plan_Break_Overall is 0; Learning Actual End Date (A31) is present; and the Learning Actual End Date (A31) is no later than 31 July 2015. Otherwise set to 0.
P_Count_Timely	For the timely qualification achievement-rate measure, this indicates whether the record should be counted towards the timely qualification achievement rate.	0 or 1	Derived	Set to 1 if: <ul style="list-style-type: none"> P_Trans_Timely is 0; P_Plan_Break_Timely is 0; and

Data item	Description	Data values	Source (ILR)	Derivation
				<ul style="list-style-type: none"> the Learning Planned End Date (A28) is no later than 31 July 2015 Otherwise set to 0.
P_Expndyr	The expected end year of the programme aim (20_ _).		Derived	Set to the value of the first calendar year of the academic period the Learning Planned End Date (A28) falls in. (For example, if the Learning Planned End Date falls in the 2012/2013 academic year, P_Expndyr has the value of 2012.)
P_Frm_Ach_Overall	For the overall qualification achievement-rate measure, this indicates whether the programme aim has been achieved.	0 or 1	Derived	Set to 1 if: <ul style="list-style-type: none"> P_Trans_Overall is 0; P_Plan_Break_Overall is 0; D_AchieveRateStatus is 1 (achieved); and the Learning Actual End Date (A31) is not later than 31 July 2015. Otherwise set to 0.
P_Frm_Ach_Timely	For the timely qualification achievement-rate measure, this indicates whether the programme aim has been achieved.	0 or 1	Derived	Set to 1 if: <ul style="list-style-type: none"> P_Trans_Timely is 0; P_Plan_Break_Timely is 0; D_AchieveRateStatus is 1 (achieved); the Learning Planned End Date (A28) is not later than 31 July 2015; and the Learning Actual End Date (A31) is on or before the Learning Planned End Date (A28), or no more than 90 days after it. Otherwise set to 0.
P_Hybridendyr	The hybrid end year of the programme aim (20_ _).		Derived	Set to: <ul style="list-style-type: none"> the actual learning end year (P_Actendyr); or the expected learning end year (P_Expndyr); whichever is higher.
P_Plan_Break_Overall	For the overall qualification achievement-rate measure, this indicates whether the apprentice is on a planned break.	0 or 1	Derived	Set to 1 if: <ul style="list-style-type: none"> D_AchieveRateStatus is 11 or 12; and the Learning Actual End Date (A31) is not later than 31 July 2015. Otherwise set to 0.
P_Plan_Break_Timely	For the timely qualification achievement-rate measure, this indicates whether the apprentice is on a planned break.	0 or 1	Derived	Set to 1 if: <ul style="list-style-type: none"> D_AchieveRateStatus is 11 or 12; the Learning Planned End Date (A31) is not later than 31 July 2015; and

Data item	Description	Data values	Source (ILR)	Derivation
				<ul style="list-style-type: none"> the Learning Actual End Date (A28) is on or before the Learning Planned End Date (A28), or no more than 90 days after it. Otherwise set to 0.
P_Startyr	The start year of the programme aim (20_ _).		Derived	Set to the value of the first calendar year of the academic period the Learning Start Date (A27) falls in. (For example, if the Learning Start Date falls in the 2012/2013 academic year, P_Startyr is set to 2012.)
P_Trans_Overall	For the overall qualification achievement-rate measure, this indicates whether an apprentice has transferred to another programme within the same provider.	0 or 1	Derived	Set to 1 if: <ul style="list-style-type: none"> (D_AchieveRateStatus is 7 or 8 or (D_AchieveRateStatus 10 and Withdrawal Reason is not 41)); and the Learning Actual End Date (A31) is not later 31 July 2015. Otherwise set to 0.
P_Trans_Timely	For the timely qualification achievement-rate measure, this indicates whether an apprentice has transferred to another programme within the same provider.	0 or 1	Derived	Set to 1 if: <ul style="list-style-type: none"> (D_AchieveRateStatus is 7 or 8 or (D_AchieveRateStatus 10 and Withdrawal Reason is not 41)); and; the Learning Planned End Date (A28) is not later than 31 July 2015; and the Learning Actual End Date (A31) is on or before the Learning Planned End Date (A28), or no more than 90 days after it. Otherwise set to 0.
Plan_Break_Overall_Excl	For the overall qualification achievement-rate measure, this indicates whether the apprentice is on a planned break. Planned break aims are not included in qualification achievement rates.	0 or 1	Derived	Set to 1 if: <ul style="list-style-type: none"> D_AchieveRateStatus is 11 or 12; and the Learning Actual End Date (A31) is not later than 31 July 2015. Otherwise set to 0.
Plan_Break_Timely_Excl	For the timely qualification achievement-rate measure, this indicates whether the apprentice is on a planned break. Planned break aims are not included in qualification achievement rates.	0 or 1	Derived	Set to 1 if: <ul style="list-style-type: none"> D_AchieveRateStatus is 11 or 12; the Learning Actual End Date (A31) is not later than 31 July 2015; and the Learning Planned End Date (A28) is on or before the Learning Planned End Date (A28), or no more than 90 days after it. Otherwise set to 0.

Data item	Description	Data values	Source (ILR)	Derivation
PriorAttain	The learner's prior attainment level.		ILR standard files	Set to Prior Attainment (L35).
ProgType	The programme type.		ILR standard files	Set to Programme Type (A15).
Prv_Group	The provider's provider group		ILR 2014/2015 provider-details file	Obtained from the ILR 2014/2015 provider-details file.
Prv_Name	The provider's name.		ILR 2014/2015 provider-details file	Obtained from the ILR 2014/2015 provider-details file.
Prv_Type	The type of provider.		ILR 2014/2015 provider-details file	Obtained from the ILR 2014/2015 provider-details file.
PathwayCode	The pathway of the Apprenticeship framework being undertaken.			Not populated for ILR files for 2011/2012. For ILR files for 2012/2013 onwards set to Apprenticeship Pathway .
PathwayName	The pathway name		Derived	Set to PathwayName from the framework lookup.
QAR_Status	Indicates whether or not the record is included in the provider's qualification achievement-rate calculations.	QAR Inclusions QAR Exclusions	Derived	Set to 'QAR Exclusions' if the aim is not included in overall qualification achievement-rate calculations. Otherwise set to 'QAR Inclusions'. For most excluded aims, a specific exclusion flag will also be set.
QAR_Status_Overall	Indicates whether or not the record is included in the provider's overall qualification achievement-rate calculations.	QAR Inclusions QAR Exclusions	Derived	Set to 'QAR Exclusions' if the aim is not included in overall qualification achievement-rate calculations. Otherwise set to 'QAR Inclusions'. For most excluded aims, a specific exclusion flag will also be set.
QAR_Status_Timely	Indicates whether or not the record is included in the provider's timely qualification achievement-rate calculations.	QAR Inclusions QAR Exclusions	Derived	Set to 'QAR Exclusions' if the aim is not included in timely qualification achievement-rate calculations. Otherwise set to 'QAR Inclusions'. For most excluded aims, a specific exclusion flag will also be set.
SectorSubjectAreaTier1	Sector subject area – the broad (tier 1) classification of the subject of the programme aim.		Derived	Set to SectorSubjectAreaTier1 from the framework lookup.
SectorSubjectAreaTier2	The more specialised classification (tier 2) of the subject of the programme aim.		Derived	Set to SectorSubjectAreaTier2 from the framework lookup.

Data item	Description	Data values	Source (ILR)	Derivation
Sex	The apprentice's sex.		ILR standard files	Set to Sex (L13).
Subcontractor_Name	The subcontractor's name.		ILR 2014/2015 provider-details file	The name of the subcontracting provider, from the ILR 2014/2015 provider-details file.
Subcontractor_UKPRN	The UKPRN of the partner provider which delivered the main assessment aim or competency aim of an apprenticeship.		Derived	<p>For ILR files for 2010/2011 set to null.</p> <p>For ILR files for 2011/2012 and 2012/2013, set to the Subcontracted or Partnership UKPRN of the main learning aim of the apprenticeship. The main learning aim for an apprenticeship programme is where:</p> <ul style="list-style-type: none"> • Aim Type is 2; • UKPRN is the same as the UKPRN of the programme aim; • Learner Reference Number is the same as the Learner Reference Number of the programme aim; • Programme Type is the same as the Programme Type of the programme aim; and • Learning Start Date is the same as the Learning Start Date of the programme aim. <p>For ILR files for 2013/2014 onwards, set to the Subcontracted or Partnership UKPRN of the competency learning aim of the apprenticeship. The competency learning aims is identified from the LARS Framework Aims table.</p> <p>The component aims of an apprenticeship programme are those where:</p> <ul style="list-style-type: none"> • Aim Type is 3; • UKPRN is the same as the UKPRN of the programme aim; • Learner Reference Number is the same as the Learner Reference Number of the programme aim; • Framework Code is the same as the Framework Code of the programme aim; • Programme Type is the same as the Programme Type of the programme aim; and • Learning Start Date is the same as the Learning Start Date of the programme aim.

Data item	Description	Data values	Source (ILR)	Derivation
				<p>Each component aim of the apprenticeship is checked against the LARS Framework Aims table. The component competency learning aim is the competency component aim where:</p> <ul style="list-style-type: none"> • Learning Aim Reference is the same as LearnAimRef on the LARS Framework Aims table; • Framework Code is the same as FworkCode on the LARS Framework Aims table; • Programme Type is the same as ProgType on the LARS Framework Aims table; • Apprenticeship Pathway is the same as PwayCode on the LARS Framework Aims table; and • FrameworkComponentType on the LARS Framework Aims table is 1.
SWSupAimID	The software supplier's aim identifier of the aim.		ILR standard files	For ILR files for 2014/2015 onwards set to SWSupAimID . (This field is not present for ILR files for 2010/2011 to 2013/2014.)
Transfer_Overall_Excl	For the overall qualification achievement rate measure, this indicates whether an apprentice has transferred to another programme within the same provider. Transfer aims are not included in qualification achievement rates.	0 or 1	Derived	<p>Set to 1 if:</p> <ul style="list-style-type: none"> • (D_AchieveRateStatus is 7 or 8 or (D_AchieveRateStatus 10 and Withdrawal Reason is not 41)); and • the Learning Actual End Date (A31) is not later 31 July 2015. <p>Otherwise set to 0.</p>
Transfer_Timely_Excl	For the timely qualification achievement rate measure, this indicates whether an apprentice has transferred to another programme within the same provider. Transfer aims are not included in qualification achievement rates.	0 or 1	Derived	<p>Set to 1 if:</p> <ul style="list-style-type: none"> • (D_AchieveRateStatus is 7 or 8 or (D_AchieveRateStatus 10 and Withdrawal Reason is not 41)); and; • the Learning Planned End Date (A28) is not later than 31 July 2015; and • the Learning Actual End Date (A31) is on or before the Learning Planned End Date (A28), or no more than 90 days after it. <p>Otherwise set to 0.</p>
UKPRN	The UK provider reference number (UKPRN).		ILR standard files	Set to UK Provider Reference Number (L46).
UKPRN_orig	The UKPRN of the programme aim before the college merger process was applied to a provider's data.		Derived	See paragraphs 23 to 25 for information on setting this field.

Data item	Description	Data values	Source (ILR)	Derivation
ULN	Unique learner number.		ILR standard files	Set to Unique Learner Number (L45).
UPIN	Provider UPIN.	(For example, 105000)	ILR standard files	For ILR files for 2010/2011, set to Provider Number (L01). For ILR files for 2011/2012 onwards, set to UPIN from the PIMS that corresponds to the UK Provider Reference Number .
UPIN_Orig	The UPIN of the programme aim before the college merger process was applied to a provider's data.		Derived	See paragraphs 23 to 25 for information on setting this field.
WithdrawalReason	The reason learning ended.		ILR standard files	Set to Withdrawal Reason (A50).
Year	The current academic year for the qualification achievement-rates dataset.	2014/15	Derived	Set to '2014/15'.
YearAimSubmitted	The academic year which the aim was submitted in.		Derived	Set to '2010/11' if the learning aim is taken from the 2010/2011 ILR. Set to '2011/12' if the learning aim is taken from the 2011/2012 ILR. Set to '2012/13' if the learning aim is taken from the 2012/2013 ILR. Set to '2013/14' if the learning aim is taken from the 2013/2014 ILR. Set to '2014/15' if the learning aim is taken from the 2014/2015 ILR. Set to '2015/16' if the learning aim is taken from the 2015/2016 ILR.

Section 4 – Contents of the qualification achievement-rates dataset for records created from the LEOP dataset

Source or derivation of fields in the qualification achievement-rates dataset

50. The two reference files used in some of the derivations are as follows.

- a) The 2014/2015 Framework lookup file – this file holds programme-aim information from the Learning Aims Reference System (LARS) and the Learning Aims Reference Application (LARA), as at the ‘hard close’ of the 2014/2015 ILR (23 October 2015).
- b) The 2014/2015 Provider Details file – this file holds providers’ details from the Provider and Organisation Information Management System (PIMS), as at 31 July 2015.
- c) The look-up used to determine the delivery region and delivery local authority of a delivery location postcode is obtained from the National Statistics Postcode Lookup (UK) May 2015. This can be downloaded from the Office Of National Statistics website (at <https://geoportal.statistics.gov.uk/geoportal/catalog/search/resource/details.page?uuid=%7BAFA00CD3-5F55-4980-8EC5-D94C68CED977%7D>)

Data item	Description	Data values	Source (LEOP)	Derivation
A2A_Excl	Indicates that the programme aim is an Access to Apprenticeship aim but the apprentice is not employed. Access to Apprenticeship aims where the apprentice is not employed are not included in qualification achievement rates.	0	Derived	Set to 0.
Age_Band	A banding of the apprentice’s age at the start of the Apprenticeship programme.	1 = 16 to 18 2 = 19 to 23 3 = 24 or more	Derived	Set to 1 if D_AgeAimStart is 0 to 18. Set to 2 if D_AgeAimStart is 19 to 23. Set to 3 if D_AgeAimStart is 24 or greater.
ClassLearn_Excl	Indicates that the learning aim is a classroom learning aim reported through the employer responsive funding stream. Classroom learning aims reported through the employer responsive funding stream are not included in qualification achievement rates.	0	Derived	Set to 0.
CompStatus	The completion status of the programme aim.		LEOP standard files	Set to Completion Status .
D_AchieveRateStatus	The status of the learning aim for calculating qualification achievement rates.		ILR standard files / Derived	Set the value as follows. <ul style="list-style-type: none"> Set to 0 (continuing) if the Learning Actual End Date is not populated.

Data item	Description	Data values	Source (LEOP)	Derivation
				<ul style="list-style-type: none"> Set to 1 (achieved) if the Learning Actual End Date is populated and the Learning Outcome is 1. Set to 11 (apprentice is taking a planned break from learning) if the Completion Status is 6. Set to 8 (transfer to a new programme at the same provider) if the Completion Status is 4 or 5. <p>If none of the conditions above apply, set to 6 (not achieved).</p> <p>(Note: as the LEOP dataset does not include a 'Reason Learning Ended' D_AchieveRateStatus, values of 9 (transfer to new provider) and 10 (transfer to a new provider forced by SFA or EFA intervention) cannot be determined.</p>
D_AgeAimStart	The age of the apprentice on the start date of the programme aim.		LEOP standard files	Set to A_Agest .
D_Total_Payment	The total funding a provider could potentially receive.	Not populated	–	–
Datasource	The source of the record on the qualification achievement-rates dataset, which is either the ILR or the LEOP dataset.	LEOP	Derived	Set to LEOP.
DelLocPostCode	The postcode of the delivery location.		LEOP standard files	Set to Delivery Location Postcode .
DelLocPostCode_GOR	The delivery location postcode Government office region.		Postcode lookup	Obtained from the National Statistics Postcode Lookup (UK) May 2015.
DelLocPostCode_LocalAuthority	The delivery location postcode local authority.		Postcode lookup	Obtained from the National Statistics Postcode Lookup (UK) May 2015.
Ethnicity	The apprentice's ethnic background.		LEOP standard files	Set to Learner Ethnicity .
Fund_Qual_Excl	<p>Indicates that the learner has withdrawn from a learning aim before the qualifying number of days for funding has been met</p> <p>(Note: the qualifying period for funding aims with a planned duration of less than 14 days is 1 day. Fund_Qual_Excl is always set to 0 for aims with a planned duration of less than 14 days.)</p>	0	Derived	Set to 0.

Data item	Description	Data values	Source (LEOP)	Derivation
FworkCode	Framework code		LEOP standard files.	Set to Framework Code .
FworkName	Framework name		Derived	Set to FworkName from the framework lookup.
L_Disability	The apprentice's disability.	Not populated	–	–
L_LearnDiff	The apprentice's learning difficulty.	Not populated	–	–
L_PriorPcode	The apprentice's home postcode.		LEOP standard files	Set to Learner Home Postcode .
L_PriorPcode_GOR	The apprentice's home postcode Government office region.		Postcode lookup	Obtained from the National Statistics Postcode Lookup (UK) May 2015.
L_PriorPcode_LocalAuthority	The apprentice's home postcode local authority.		Postcode lookup	Obtained from the National Statistics Postcode Lookup (UK) May 2015.
LearnActEndDate	The learning actual end date (DDMMYYYY).		LEOP standard files	Set to Learning Actual End Date .
LearnAimBelowMS	Indicates whether the learning aim is classified as being below the minimum standards threshold	0 or 1	Derived	See paragraphs 41 and 47 for details of how the classification below minimum standards is derived.
LearnPlanEndDate	The learning planned end date (DDMMYYYY).		LEOP standard files	Set to Learning Planned End Date .
LearnRefNumber	The learner reference number.		Derived	Looked up from the Learning Records Service using the ULN .
LearnRefNumberAnon	The anonymised learner reference number.		Derived	The processing that creates the qualification achievement rates dataset assigns a unique anonymised value to each learner.
LearnRefNumber_Orig	The learner reference number of the programme aim before the college merger process was applied to a provider's data.		Derived	Set to the LearnRefNumber value.
LearnStartDate	The learning start date (DDMMYYYY).		LEOP standard files	Set to Learning Start Date .
LLDDHealthProb	Indicates whether the apprentice considers that they have a learning difficulty, disability or health problem.		LEOP standard files	Set to LLD and Health Problem Indicator .
Outcome	The learning outcome of the programme aim.		LEOP standard files	Set to Outcome Indicator .
P_Actendyr	The actual end year of the programme aim (20__).		Derived	Set to the first calendar year of the academic period the Learning Actual End Date falls in. (For example, if the Learning Actual End Date falls in the 2014/2015 academic year, P_Actendyr has the value of 2014.)

Data item	Description	Data values	Source (LEOP)	Derivation
P_Count_Overall	For the overall qualification achievement-rate measure, this indicates whether the record should be counted towards the overall qualification achievement rate.	0 or 1	Derived	Set to 1 if: <ul style="list-style-type: none"> • P_Trans_Overall is 0; • P_Plan_Break_Overall is 0; • Learning Actual End Date is populated; and • the Learning Actual End Date is no later than 31 July 2015. Otherwise set to 0.
P_Count_Timely	For the timely qualification achievement-rate measure, this indicates whether the record should be counted towards the timely qualification achievement rate.	0 or 1	Derived	Set to 1 if: <ul style="list-style-type: none"> • P_Trans_Timely is 0; • P_Plan_Break_Timely is 0; and • the Learning Planned End Date is no later than 31 July 2015 31 July 2015. Otherwise set to 0.
P_Expendyr	The expected end year of the programme aim (20__).		Derived	Set to the value of the first calendar year of the academic period the Learning Planned End Date falls in. (For example, if the Learning Planned End Date falls in the 2012/2013 academic year, P_Expendyr has the value of 2012.)
P_Frm_Ach_Overall	For the overall qualification achievement-rate measure, this indicates whether the apprentice has achieved the framework.	0 or 1	Derived	Set to 1 if: <ul style="list-style-type: none"> • P_Trans_Overall is 0; • P_Plan_Break_Overall is 0; • D_AchieveRateStatus is 1 (achieved); and • the Learning Actual End Date is not later than 31 July 2015. Otherwise set to 0.
P_Frm_Ach_Timely	For the timely qualification achievement-rate measure, this indicates whether the apprentice has achieved the framework.	0 or 1	Derived	Set to 1 if; <ul style="list-style-type: none"> • P_Trans_Timely is 0; • P_Plan_Break_Timely is 0; • D_AchieveRateStatus is 1 (achieved); • the Learning Planned End Date is not later than 31 July 2015; and • the Learning Actual End Date is on or before the Learning Planned End Date, or no more than 90 days after it. Otherwise set to 0.
P_Hybridendyr	The hybrid end year of the programme aim (20__).		Derived	Set to: <ul style="list-style-type: none"> • the actual learning end year (P_Actendyr); or • the expected learning end year (P_Expendyr); whichever is higher.

Data item	Description	Data values	Source (LEOP)	Derivation
P_Plan_Break_Overall	For the overall qualification achievement-rate measure, this indicates whether the apprentice is on a planned break. Planned break aims are not included in qualification achievement rates.	0 or 1	Derived	Set to 1 if: <ul style="list-style-type: none"> D_AchieveRateStatus is 11; and the Learning Actual End Date is not later than 31 July 2015. Otherwise set to 0.
P_Plan_Break_Timely	For the timely qualification achievement-rate measure, this indicates whether the apprentice is on a planned break. Planned break aims are not included in qualification achievement rates.	0 or 1	Derived	Set to 1 if; <ul style="list-style-type: none"> D_AchieveRateStatus is 11; the Learning Planned End Date is not later than 31 July 2015; and the Learning Actual End Date is on or before the Learning Planned End Date, or no more than 90 days after it. Otherwise set to 0.
P_Startyr	The start year of the programme aim (20_ _).		Derived	Set to the value of the first calendar year of the academic period the LearnStartDate falls in. (For example, if the LearnStartDate falls in the academic year 2012/2013 P_Startyr is set to 2012.)
P_Trans_Overall	For the overall qualification achievement-rate measure, this indicates whether an apprentice has transferred to another programme within the same provider. Transfer aims are not included in qualification achievement rates.	0 or 1	Derived	Set to 1 if: <ul style="list-style-type: none"> D_AchieveRateStatus is 8; and the Learning Actual End Date is not later than 31 July 2015. Otherwise set to 0.
P_Trans_Timely	For the timely qualification achievement-rate measure, this indicates whether an apprentice has transferred to another programme within the same provider. Transfer aims are not included in qualification achievement rates.	0 or 1	Derived	Set to 1 if: <ul style="list-style-type: none"> D_AchieveRateStatus is 8; the Learning Planned End Date is not later than 31 July 2015; and the Learning Actual End Date is on or before the Learning Planned End Date, or no more than 90 days after it. Otherwise set to 0.
Plan_Break_Overall_Excl	For the overall qualification achievement-rate measure, this indicates whether the apprentice is on a planned break. Planned break aims are not included in qualification achievement rates.	0 or 1	Derived	Set to 1 if: <ul style="list-style-type: none"> D_AchieveRateStatus is 11; and the Learning Actual End Date is not later than 31 July 2015. Otherwise set to 0.
Plan_Break_Timely_Excl	For the timely qualification achievement-rate measure, this indicates whether the apprentice is on a planned break. Planned break aims are not included in qualification achievement rates.	0 or 1	Derived	Set to 1 if; <ul style="list-style-type: none"> D_AchieveRateStatus is 11;

Data item	Description	Data values	Source (LEOP)	Derivation
				<ul style="list-style-type: none"> the Learning Planned End Date is not later than 31 July 2015; and the Learning Actual End Date is on or before the Learning Planned End Date, or no more than 90 days after it. Otherwise set to 0.
PriorAttain	The learner's prior attainment level.	Not populated	–	–
ProgType	The type of programme.		LEOP standard files	Set to Programme Type .
Prv_Group	The provider's provider group		ILR 2014/2015 provider-details file	Obtained from the ILR 2014/2015 provider-details file.
Prv_Name	The provider's name.		ILR 2014/2015 provider-details file	Obtained from the ILR 2014/2015 provider-details file.
Prv_Type	The type of provider.		ILR 2014/2015 provider-details file	Obtained from the ILR 2014/2015 provider-details file.
PathwayCode	The pathway of the Apprenticeship framework being undertaken.	Not populated	–	–
PathwayName	The pathway name	Not populated	–	–
QAR_Status	Indicates whether or not the record is included in the provider's qualification achievement-rate calculations.	QAR Inclusions QAR Exclusions	Derived	Set to 'QAR Exclusions' if the aim is not included in overall qualification achievement-rate calculations. Otherwise set to 'QAR Inclusions'. For most excluded aims, a specific exclusion flag will also be set.
QAR_Status_Overall	Indicates whether or not the record is included in the provider's overall qualification achievement-rate calculations.	QAR Inclusions QAR Exclusions	Derived	Set to 'QAR Exclusions' if the aim is not included in overall qualification achievement-rate calculations. Otherwise set to 'QAR Inclusions'. For most excluded aims, a specific exclusion flag will also be set.
QAR_Status_Timely	Indicates whether or not the record is included in the provider's timely qualification achievement-rate calculations.	QAR Inclusions QAR Exclusions	Derived	Set to 'QAR Exclusions' if the aim is not included in timely qualification achievement-rate calculations. Otherwise set to 'QAR Inclusions'. For most excluded aims, a specific exclusion flag will also be set.

Data item	Description	Data values	Source (LEOP)	Derivation
SectorSubjectAreaTier1	Sector subject area – the broad (tier 1) classification of the subject of the programme aim.		Derived	Set to SectorSubjectAreaTier1 from the framework lookup.
SectorSubjectAreaTier2	The more specialised classification (tier 2) of the subject of the programme aim.		Derived	Set to SectorSubjectAreaTier2 from the framework lookup.
Sex	The apprentice's sex.		LEOP standard files	Set to Gender .
Subcontractor_Name	The subcontractor's name.	Not populated	–	–
Subcontractor_UKPRN	The UKPRN of the partner provider which delivered the main assessment aim or competency aim of an apprenticeship.	Not populated	–	–
SWSupAimID	The software supplier's aim identifier of the aim.	Not populated	–	–
Transfer_Overall_Excl	For the overall qualification achievement rate measure, this indicates whether an apprentice has transferred to another programme within the same provider. Transfer aims are not included in qualification achievement rates.	0 or 1	Derived	Set to 1 if: <ul style="list-style-type: none"> • D_AchieveRateStatus is 8; and • the Learning Actual End Date is not later than 31 July 2015. Otherwise set to 0.
Transfer_Timely_Excl	For the timely qualification achievement rate measure, this indicates whether an apprentice has transferred to another programme within the same provider. Transfer aims are not included in qualification achievement rates.	0 or 1	Derived	Set to 1 if: <ul style="list-style-type: none"> • D_AchieveRateStatus is 8; • the Learning Planned End Date is not later than 31 July 2015; and • the Learning Actual End Date is on or before the Learning Planned End Date, or no more than 90 days after it. Otherwise set to 0.
UKPRN	UK provider reference number (UKPRN).		LEOP standard files	Set to UKPRN .
UKPRN_orig	The UKPRN of the programme aim before the college merger process was applied to a provider's data.		Derived	Set to the UKPRN value.
ULN	Unique learner number (ULN)		LEOP standard files	Set to ULN .
UPIN	Provider number		ILR 2014/2015 provider-details file	Looked up from PIMS using the UKPRN .

Data item	Description	Data values	Source (LEOP)	Derivation
UPIN_Orig	The UPIN of the programme aim before the college merger process was applied to a provider's data.		Derived.	Set to the UPIN value.
WithdrawalReason	The reason learning ended.	Not populated	–	–
Year	The current academic year for the qualification achievement-rates dataset.	2014/15	Derived.	Set to '2014/15'.
YearAimSubmitted	The academic year which the aim was submitted in.		Derived	Set to '2011/12' if the learning aim is taken from the 2011/2012 LEOP dataset. Set to '2012/13' if the learning aim is taken from the 2012/2013 LEOP dataset. Set to '2013/14' if the learning aim is taken from the 2013/2014 LEOP dataset. Set to '2014/15' if the learning aim is taken from the 2014/2015 LEOP dataset. Set to '2015/16' if the learning aim is taken from the 2015/2016 LEOP dataset.

Changes from the 2013/2014 document

51. The reasons for excluding aims from the achievement rate calculations are now present in the dataset as exclusions. These reasons are:

- Apprentices who are on an Access to Apprenticeship scheme but are not employed.
- Classroom learning provision reported through the employer responsive funding stream.
- Frameworks where the learner has withdrawn from the framework within the funding qualifying period, and the learning aim is not achieved.
- Frameworks which are not funded.
- Frameworks where the apprentice has temporarily withdrawn from the framework due to an agreed break in learning.
- Frameworks where the apprentice has transferred to a different programme with the same provider.

52. The rules for choosing aims from the 2014/2015 ILR files have been added.

53. The inclusion of the subcontractor of the main assessment or competency aim.

54. The changes made to the qualification achievement-rates dataset are listed below.

New fields

Field name	Reason for including it
A2A_Excl	To allow access to apprenticeship aims, where the apprentice is not employed, to be excluded from qualification achievement rate calculations.
CL_Excl	To allow classroom learning aims to be excluded from qualification achievement rate calculations.
D_AchieveRateStatus	To hold the status of a programme aim.
DelLocPostCode_GOR	To allow the identification of the Government office region of the delivery location postcode.
DelLocPostCode_LocalAuthority	To allow reporting by the local authority of the delivery location postcode.
Fund_Qual_Excl	To allow classroom learning aims to be excluded from qualification achievement rate calculations.
LearnAimBelowMS	To allow the identification of aims that are below the minimum standards threshold.
L_PriorPcode_GOR	To allow the identification of the Government office region of the learner's home postcode.
L_PriorPcode_LocalAuthority	To allow reporting by the local authority of the learner's home postcode.
Not_Funded_Excl	To allow non-funded aims to be excluded from qualification achievement rate calculations.
Plan_Break_Overall_Excl	To allow planned breaks to be excluded from overall qualification achievement rate calculations.
Plan_Break_Timely_Excl	To allow planned breaks to be excluded from timely qualification achievement rate calculations.

Field name	Reason for including it
QAR_Status_Overall	To identify the aims that are included in a provider's overall qualification achievement rate calculations.
QAR_Status_Timely	To identify the aims that are included in a provider's timely qualification achievement rate calculations.
Subcontractor_Name	The name of the subcontractor that has delivered the main assessment aim of an apprenticeship.
Subcontractor_UKPRN	To identify the subcontractor that has delivered the main assessment aim of an apprenticeship.
SWSupAimID	To identify the identifier the software gave to the aim.
Transfer_Overall_Excl	To allow transfers to be excluded from overall qualification achievement rate calculations.
Transfer_Timely_Excl	To allow transfers to be excluded from timely qualification achievement rate calculations.
YearAimSubmitted	To identify the academic year which the aim was submitted in.

Removed fields

Field name	Reason for removing it
AchDate	This is not needed for qualification achievement reporting.
Collection	This is not needed for qualification achievement reporting.
D_EmplID	This is not needed for qualification achievement reporting.
D_AgeAimStart_Band	D_AgeAimStart_Band is not required. Age_Band is now derived from D_AgeAimStart.
DateOfBirth	This is not needed for qualification achievement reporting.
Funded	This field has been replaced with Not_Funded_Excl.
LDM_1	This is not needed for qualification achievement reporting.
LDM_2	This is not needed for qualification achievement reporting.
LDM_3	This is not needed for qualification achievement reporting.
LDM_4	This is not needed for qualification achievement reporting.
P_In_0910	Data from the 2009/2010 ILR is not used to create the dataset.
P_In_1011	This is not needed for qualification achievement reporting.
P_In_1112	This is not needed for qualification achievement reporting.
P_In_1213	This is not needed for qualification achievement reporting.
P_In_1314	This is not needed for qualification achievement reporting.
P_In_1415	This is not needed for qualification achievement reporting.
P_In_1516	This is not needed for qualification achievement reporting.
P_Period_End_Overall	This is not used in field derivations.
P_Period_End_Timely	This is not used in field derivations.
P_Plan_Break_Overall	This field has been replaced with Plan_Break_Overall_Excl.
P_Plan_Break_Timely	This field has been replaced with Plan_Break_Timely_Excl.
P_ProgStatus	This field has been replaced with D_AchieveRateStatus.
P_Trans_Overall	This field has been replaced with Transfer_Overall_Excl.
P_Trans_Timely	This field has been replaced with Transfer_Timely_Excl.
Pst_LA	This field has been replaced with DelLocPostCode_LocalAuthority.
Transaction_ID	This is not needed for qualification achievement reporting.

Fields whose derivation has changed

Field name	Reason for change
Age_Band	The derivation has changed to use D_AgeAimStart instead of D_AgeAimStart_Band .
P_Frm_Ach_Overall	The derivation has changed to use D_AchieveRateStatus instead of P_ProgStatus .
P_Frm_Ach_Timely	The derivation has changed to use D_AchieveRateStatus instead of P_ProgStatus .

Changes made from version 1.0 (dated 16 June 2015)

Changes from version 1.0 are highlighted in green

Paragraph 3 Planned breaks and transfers are not classified as exclusions.

Paragraph 11. Achievement information from the R04 is also used in the calculation of the overall achievement rate.

Fields whose derivation has changed

Field name	Reason for the change
AgeBand	Frameworks with an unknown age are placed in the 24+ category.
Not_Funded_Excl	The condition when the field is set to 1 has been amended
P_Frm_Ach_Overall	The derivation has changed to also check the value of P_Trans_Overall and P_Plan_Break_Overall. Field renamed as P_Ach_Overall so that it has the same name as in the education and training achievement rates dataset.
P_Frm_Ach_Timely	The derivation has changed to also check the value of P_Trans_Overall and P_Plan_Break_Overall. Field renamed as P_Ach_Timely so that it has the same name as in the education and training achievement rates dataset.
P_Count_Overall	The derivation has changed to also check the value of P_Trans_Overall and P_Plan_Break_Overall.
P_Count_Timely	The derivation has changed to also check the value of P_Trans_Overall and P_Plan_Break_Overall.

New fields

Field name	Reason for including it
P_Plan_Break_Overall	Overall planned breaks are not identified using an exclusion flag.
P_Plan_Break_Timely	Timely planned breaks are not identified using an exclusion flag.
P_Trans_Overall	Overall transfers are not identified using an exclusion flag.
P_Trans_Timely	Timely transfers are not identified using an exclusion flag.
PriorAttain	To show the learner's level of attainment prior to commencing the apprenticeship
Prv_Group	To allow provider group to be included on reports
QAR_Status	Planned breaks and transfers are not identified by exclusion flags. Separate overall and timely status fields are not needed and have been replaced by a single status field - QAR_Status.

Fields whose name has changed

Field name	Reason for the change
CL_Excl	Changed to ClassLearn_Excl to avoid confusion with the community learning exclusion field in the education & training dataset
PwayCode	Changed to PathwayCode to match the name in LARS
PwayName	Changed to PathwayName to match the name in LARS
SecSubAreaTier2	Changed to SectorSubjectAreaTier1 to match the name in LARS
SecSubAreaTier2	Changed to SectorSubjectAreaTier2 to match the name in LARS

Removed fields

Field name	Reason for removing it
Plan_Break_Overall_Excl	Overall planned breaks are not identified using an exclusion flag.
Plan_Break_Timely_Excl	Timely planned breaks are not identified using an exclusion flag.
QAR_Status_Overall	Planned breaks and transfers are not identified by exclusion flags. Separate overall and timely status fields are not needed and have been replaced by a single status field - QAR_Status.
QAR_Status_Timely	Planned breaks and transfers are not identified by exclusion flags. Separate overall and timely status fields are not needed and have been replaced by a single status field - QAR_Status.
SWSupAimID	The software supplier's aim identifier is not included in the achievement rate dataset.
Transfer_Overall_Excl	Overall transfers are not identified using an exclusion flag.
Transfer_Timely_Excl	Timely transfers are not identified using an exclusion flag.

Fields used in derivations whose name has changed

Original field name	Reason for the change
PwayCode	Changed to PathwayCode to match the name in LARS
PwayName	Changed to PathwayName to match the name in LARS
SecSubAreaTier2	Changed to SectorSubjectAreaTier1 to match the name in LARS
SecSubAreaTier2	Changed to SectorSubjectAreaTier2 to match the name in LARS

Changes made from version 1.1 (dated 18 November 2015)

Changes from version 1.1 are highlighted in blue

Fields whose derivation has changed

Field name	Reason for the change
Not_Funded_Excl	Definition corrected.

Author	Skills Funding Agency
Date created	18 February 2016
Document ref.	Apprenticeship QAR Data Set Production and Data Definition
Version	1.2