

Royal Navy and Royal Marines Monthly Personnel Situation Report for February 2016



Ministry of Defence

(Published 10 March 2016)

Statistical Release

Issued by:
Defence Statistics

The statistician responsible for this report is the Defence Statistics (Navy) Head of Branch.

Email:
Defstrat-stat-navy-hd@mod.uk

If you would like to be informed by email of updates to this publication please subscribe via email:
Defstrat-stat-Navy@mod.uk

We welcome feedback, comments and queries on this report. Please contact us on the above email

The Background Quality Report for this publication can be found at:
[Background Quality Report](#)

Links to other publications which may be of interest

[UK Armed Forces Redundancy Programme Statistics](#) This publication contains information on the number of UK Armed Forces personnel either applying or being selected for redundancy in the various tranches. Please note that not all of those who applied were selected and not all of those that were selected had applied for redundancy.

[Royal Navy Quarterly Pocket Brief](#) This quarterly publication contains information on strengths, requirements, intakes and outflows from the Royal Navy service

This publication is a monthly report providing information on the number of Royal Navy and Royal Marine personnel joining and leaving the Regular service. It also shows the strengths of the Regular and Full Time Reserves Service (FTRS) Royal Navy and Royal Marines by rank and Length of Service. This publication is complemented by the [Royal Navy Quarterly Pocket Brief](#) which also shows breakdown of ethnicity in the RN/RM, Army and RAF.

Information about some of the tables used in this report The Royal Marine Aircrew-men are included with Warfare (Air); Royal Marine Medical Assistants are included with Medical. Where an RM/RN total split is given they are included with the RM. Warfare Officers include Royal Marine pilots. From August 2015 Communication and Information Specialists are now counted towards Engineer Technician (Weapon Engineer) having moved from Warfare branch. This has implications for tables 1a, 9b, 10b and 12b. FTRS are only included in table 1, unless otherwise stated.

Voluntary Outflow (VO) Voluntary Outflow exit rates are calculated using the 12 month total VO divided by the average strength, which is calculated using a 12 month centred rolling average. This centres the data and gets a midpoint month. 13 months of strengths are used, starting mid-way through one month and ending mid-way through the same month a year later. This way the moving average VO rate falls on a specific month rather than being in between months.

Key Points for February 2016

Strengths

- The trained regular strength of the RN/RM including FTRS Regulars was 29,720 giving a deficit of 1.8% against the liability as shown in Table 1a.
- The trained regular strength excluding FTRS regulars was 29,440, a decrease of 90 from the previous month, also shown in Table 1a.

Outflows

- The total outflow from the trained regular strength excluding FTRS, was 2,710 in the 12 months to 1 February 2016, made up of 2,260 Ratings and 460 Officers as shown in Tables 9a and 9b.

Royal Navy and Royal Marines Monthly Personnel Situation Report - Contents List

[Summary of NATO Ranks](#)

[Glossary of Terms and Definitions used within this publication](#)

[Revisions](#)

[Data Sources](#)

[Data Issues - Strengths and Weaknesses](#)

[Rounding Policy](#)

[Liability](#)

[Feedback](#)

Current and Historic Trained Strengths

- 1a. Trained strengths and liability
- 1b. Summary of RN/RM strengths by service and arm
- 1c. Graph of historic trained regular trained strengths and liability by Quarter
- 1d. Graph of historic trained regular trained strengths and liability by Month

Trained strengths by Branch, Specialisation and Arm

- 2a. Trained regular Officer strengths and liability by Branch, Specialisation and Arm
- 2b. Trained regular Ratings strengths and liability by Branch, Specialisation and Arm
- 2c. FTRS Officers (regular and non-regular) strengths and liability by Branch, Specialisation and Arm
- 2d. FTRS Ratings (regular and non-regular) strengths and liability by Branch, Specialisation and Arm

Trained regular strengths by branch and paid rank

- 3a. Trained regular Officer strengths and liability
- 3b. Trained regular Ratings strengths and liability
- 3c. Graphs of trained regular Officer surplus/deficit by paid rank
- 3d. Graphs of trained regular Ratings surplus/deficit by paid rank
- 3e. FTRS Officer strengths by branch and paid rank
- 3f. FTRS ratings strengths by branch and paid rank

Trained regular strengths by branch specialisation, arm and paid rank

- 4a. (GS) Trained regular Officer General Service strengths by Branch, Specialisation, Arm and paid rank
- 4a. (SM) Trained regular Officer Submariner strengths by Branch, Specialisation, Arm and paid rank
- 4a. (FAA) Trained regular Officer Fleet Air Arm Branch, Specialisation, Arm and paid rank
- 4b. (GS) Trained regular Ratings General Service strengths by Branch, Specialisation, Arm and paid rank
- 4b. (SM) Trained regular Ratings Submariner strengths by Branch, Specialisation, Arm and paid rank
- 4b. (FAA) Trained regular Ratings Fleet Air Arm strengths by Branch, Specialisation, Arm and paid rank

Untrained regular strengths by branch and Paid Rank

- 5a. Untrained regular Officer strengths by Branch and paid rank
- 5b. Untrained regular Ratings strengths by Branch and paid rank

Trained regular strengths by Top Level Budget (TLB) and paid rank

- 6a. Trained regular strength by TLB and paid rank

Trained regular length of service (LoS)

- 7a. Trained regular length of service by rank
- 7b. Graph of trained regular Officer length of service by paid rank split by RN and RM
- 7c. Graph of regular Ratings and length of service by paid rank split by RN and RM

Trained regular Officer and Rating due outflow over the next 12 months

- This table was removed from the publication in July 2013

Trained regular outflow

- 9a. Trained regular Officer outflow
- 9b. Trained Regular Rating outflow

Trained Regular Voluntary Outflow

- 10a. Trained Regular Officer voluntary outflow exits by paid rank
- 10b. Trained Regular Rating voluntary outflow exits by paid rank

Trained regular promotion to substantive rank

- 11a. Trained regular Officer promotions to substantive rank
- 11b. Trained regular Ratings promotions to substantive rank

Gains to the Trained Strength (GTS)

- 12a. Gains to the Officer trained strength by Branch showing the last 4 full financial years and the last 12 months.
- 12b. Gains to the Ratings trained strength by Branch showing the last 4 full financial years and the last 12 months

Trained Intake from 'Civil Life' or 'Another Service'

- 13a. Trained intake to the regular service showing the last 4 full financial years, the last 12 months and the last month

Summary of NATO Ranks

| Officers | | | | |
|-----------|----------------------|---|---|--------------------------------|
| NATO Rank | Royal Navy | Royal Marines | Army | RAF |
| OF10 | Admiral of The Fleet | N/A | Field Marshal | Marshal of the RAF |
| OF9 | Admiral of The Fleet | General | General | Air Chief Marshal |
| OF8 | Vice Admiral | Lieutenant General | Lt – General | Air Marshal |
| OF7 | Rear Admiral | Major General | Major General | Air Vice Marshal |
| OF6 | Commodore | Brigadier | Brigadier | Air Commodore |
| OF5 | Captain | Colonel | Colonel | Group Captain |
| OF4 | Commander | Lt Colonel | Lt Colonel | Wing Commander |
| OF3 | Lieutenant Commander | Major | Major | Squadron Leader |
| OF2 | Lieutenant | Captain | Captain | Flight Lieutenant |
| OF1 | Sub-Lieutenant | Lieutenant / 2 nd Lieutenant | Lieutenant / 2 nd Lieutenant | Flying Officer / Pilot Officer |
| OFD | Officer Designate | Officer Designate | N/A | N/A |

| Ratings | | | | |
|-----------|------------------------|---|-------------------|-----------------|
| NATO Rank | Royal Navy | Royal Marines | Army | RAF |
| OR9 | Warrant Officer 1 | Warrant Officer 1 | Warrant Officer 1 | Warrant Officer |
| OR8 | Warrant Officer 2 | Warrant Officer 2 | Warrant Officer 2 | N/A |
| OR7 | Chief Petty Officer | Colour Sergeant | Staff Sergeant | Flight Sergeant |
| OR6 | Petty Officer | Sergeant | Sergeant | Sergeant |
| OR5 | N/A | N/A | N/A | N/A |
| OR4 | Leading Rate | Corporal | Corporal | Corporal |
| OR3 | N/A | Lance Corporal | Lance Corporal | N/A |
| OR2 | Able Rate | Marine (1 st Class) | Private | JT/LAC/SAC/AC |
| OR1* | Ordinary Rate / Junior | Marine (2 nd Class) / Junior | N/A | N/A |

* Now obsolete

Glossary of Terms and Specialisations used within this publication

| Term | Definition |
|-----------------------|---|
| Officer | An officer is a member of the Armed Forces holding the Queen's Commission to lead and command elements of the forces. Officers form the middle and senior management of the Armed Forces. This includes ranks from Sub-Lt/2nd Lt/Pilot Officer up to Admiral of the Fleet/Field Marshal/Marshal of the Royal Air Force, but excludes Non-Commissioned Officers |
| Other Ranks / Ratings | Other Ranks are members of the Royal Marines who are not Officers (but Other Ranks do include Non-Commissioned Officers). The equivalent group in the Royal Navy is known as "Ratings". |
| Ministry of Defence | The Ministry of Defence (MOD) is the United Kingdom government department responsible for the development and implementation of government defence policy and is the headquarters of the British Armed Forces. The principal objective of the MOD is to defend the United Kingdom and its interests. The MOD also manages day to day running of the armed forces, contingency planning and defence procurement. |
| RNR | Royal Naval Reserve is the Volunteer Reserve element of the Royal Navy. Together with the Royal Marine Reserve they make up the Maritime Reserve . |
| RMR | Royal Marine Reserve is the Volunteer Reserve element of the Royal Marines. Together with the Royal Naval Reserve they make up the Maritime Reserve . |
| Maritime Reserve | Is the Volunteer Reserve element of the Naval Service that count towards the Future Reserve 2020 (FR20) programme. They comprise the Royal Naval Reserve and the Royal Marine Reserve and include mobilised and High Readiness Maritime Reserve personnel, plus Maritime Reserve personnel serving on FTRS and ADC contracts. The FR20 Trained Strength target for the Maritime Reserve is 3,100. |
| FTRS | FTRS (Full-Time Reserve Service) are personnel who fill Service posts for a set period on a full-time basis (this is different from mobilisation) while being a member of one of the Reserve Forces, either as an ex-regular or as a volunteer. Each Service uses FTRS personnel differently. The Naval Service predominantly uses FTRS to backfill gapped regular posts. However, they do have a small number of FTRS personnel that are not deployable for operations overseas. |
| FTRS Regular | FTRS Personnel counted against the Regular Liability |
| FTRS Non Regular | FTRS Personnel not counted against the Regular Liability |
| Transfer Trainees | Trained Personnel undergoing further training in an alternative discipline |
| GS | General Service - Surface Fleet |
| SM | Submarine - Submarines |

| | |
|--------------------|---|
| FAA | Fleet Air Arm – The Royal Navy’s Aviation branch. |
| VO | Voluntary Outflow - all voluntarily generated exits from trained personnel |
| TX | Time Expiry - personnel who leave service at the end of their engagement |
| OW | Other Wastage - outflow from trained strength due to a number of reasons, including (but not limited to) disciplinary, death, medical |
| JPA | Joint Personnel Administration: the system used by the Armed Forces to deal with matters of pay, leave and other personnel administrative tasks. JPA replaced the Naval Service IT system in November 2006 |
| QARNNS | Queen Alexandra's Royal Naval Nursing Service - the Nursing branch of the Royal Navy which work alongside the Royal Navy Medical branch |
| Strength | the number of personnel (for each Service, strength is partially determined by its requirement) |
| Trained Strength | Comprises military personnel who have completed Phase 1 and Phase 2 training: Phase 1 training includes all new entry training to provide basic military skills Phase 2 training includes initial individual specialisation, sub-specialisation and technical training following Phase 1 training prior to joining the trained strength |
| Untrained Strength | Comprises military personnel who have yet to complete Phase 2 training |

Outflow Tables 9a, 9b, 10a, 10b

The outflow tables presented in this report give a true reflection of the number of service personnel who have left the Royal Navy or the Royal Marines from each of the branches .

The corresponding figures at the top of each of the tables show how many personnel have left the Royal Navy or the Royal Marines as a summation of the outflows of all of the branches.

The very top line of each table shows the sum of the exits from the Royal Navy and the Royal Marines. As a result, this total figure includes the number of people who have transferred between the Royal Navy and Royal Marines.

The UK Armed Forces Monthly Personnel Statistics, produced by Defence Statistics (Tri Service) reports on the total number of outflows from each of the three services (Royal Navy and Royal Marines are reported together as a single service) in tables 5c and 5d. Since the Tri Service report does not include transfers between the Royal Navy and Royal Marines, the figures reported will differ between the two publications, with the UK Armed Forces Monthly Personnel Statistics indicating a lower number of outflows.

Background Information

Revisions

Defence Statistics has undertaken a major review of all Armed Forces personnel data from the Joint Personnel Administration System (JPA). This has resulted in changes to the strengths, intake and outflow reported in this publication, the periods affected are: FLOWS – from period ending 31 March 2009 to the period ending 31 October 2011, changes to monthly outflow range from fewer than 10 to around 50. STRENGTHS – from 1 May 2009 to 1 November 2011 (inclusive), changes of around 20 per month have been made to the headline strengths. The revised data are considered finalised and are therefore no longer marked provisional. Data for 1 November 2011 and subsequent data are considered final.

The number of trained regular outflows (tables 9a, 9b, 10a and 10b) and promotions (table 11a) for financial years 2010/11, 2011/12 was reported incorrectly in previous situation reports dating from November 2012 to August 2014. Correct figures are reported in September 2014 and subsequent situation reports. No previous publications have been revised.

Data Sources

Royal Navy/ Royal Marines statistics prior to March 2006 are compiled from pay records held by the Service Personnel and Veterans Agency (SPVA, formerly the Armed Forces Personnel Administration Agency). In March 2006 the transfer of all Regular Service personnel records to the Joint Personnel Administration (JPA) system began. Statistics are compiled from JPA for the Royal Navy/ Royal Marines from November 2006.

Rounding Policy

All totals are rounded in accordance with the Defence Statistics rounding policy; therefore totals may not equal the sum of their parts. All numbers are rounded to the nearest 10 with numbers ending in 5 rounded to the nearest multiple of 20 to avoid bias. Numbers that would be rounded to 0 are represented by '~'.

Liability

Liability is also known as requirement. The liability used in this publication is taken from the Planning Liability PL 2-15, scaled to DP15.

Feedback

At Defence Statistics we welcome feedback on our statistical products, if you have any comments or questions about this publication or about the statistics produced by Defence Statistics in general, please contact us as follows:

Contact: **Defence Statistics**

Email: DefStrat-Stat-Navy@mod.uk

Visit our website: www.gov.uk/organisations/ministry-of-defence/about/statistics

1a

Royal Navy and Royal Marines Trained Strengths and Liability

| | Apr-12 | Apr-13 | Apr-14 | Apr-15 |
|-----------------------|--------|--------|--------|--------|
| RN/RM Regulars | 33,190 | 31,280 | 30,310 | 29,800 |
| FTRS "Regulars" * | 100 | 150 | 200 | 250 |
| FTRS "Non-Regulars" * | 260 | 250 | 300 | 350 |

| Aug-15 | Sep-15 | Oct-15 | Nov-15 | Dec-15 | Jan-16 | Feb-16 |
|--------|--------|--------|--------|--------|--------|--------|
| 29,640 | 29,550 | 29,450 | 29,490 | 29,470 | 29,530 | 29,440 |
| 260 | 260 | 260 | 270 | 270 | 270 | 270 |
| 360 | 360 | 380 | 380 | 390 | 390 | 390 |

| | | | | | |
|-------|-----------------------------|--------|--------|--------|--------|
| Total | <i>RN/RM Strength</i> | 33,290 | 31,420 | 30,510 | 30,060 |
| | Royal Navy | 25,970 | 24,430 | 23,260 | 22,790 |
| | Royal Marines | 7,220 | 6,850 | 7,050 | 7,020 |
| | FTRS "Regulars" * | 100 | 150 | 200 | 250 |
| | Liability | 34,800 | 30,530 | 30,340 | 30,290 |
| | Regular Surplus/Deficit | -1,610 | 750 | -40 | -480 |
| | Regular Surplus/Deficit (%) | -4.6% | 2.4% | -0.1% | -1.6% |
| | Total Surplus/Deficit | -1,510 | 890 | 160 | -230 |
| | Total Surplus/Deficit (%) | -4.3% | 2.9% | 0.5% | -0.7% |

| | | | | | | |
|--------|--------|--------|--------|--------|--------|--------|
| 29,900 | 29,810 | 29,710 | 29,760 | 29,740 | 29,800 | 29,720 |
| 22,630 | 22,540 | 22,480 | 22,550 | 22,560 | 22,580 | 22,540 |
| 7,000 | 7,010 | 6,970 | 6,940 | 6,910 | 6,950 | 6,910 |
| 260 | 260 | 260 | 270 | 270 | 270 | 270 |
| 30,260 | 30,260 | 30,250 | 30,240 | 30,240 | 30,230 | 30,220 |
| -620 | -710 | -800 | -750 | -770 | -700 | -780 |
| -2.1% | -2.3% | -2.6% | -2.5% | -2.5% | -2.3% | -2.6% |
| -360 | -440 | -540 | -490 | -500 | -430 | -510 |
| -1.2% | -1.5% | -1.8% | -1.6% | -1.7% | -1.4% | -1.7% |

| | | | | | |
|----------|-------------------------------|-------|-------|-------|-------|
| Officers | | 6,410 | 6,240 | 6,100 | 6,000 |
| | Royal Navy | 5,560 | 5,400 | 5,250 | 5,150 |
| | Royal Marines General Service | 780 | 750 | 750 | 750 |
| | Royal Marines Band Service | 10 | 10 | 10 | 10 |
| | Transfer Trainees | 20 | 10 | 10 | 10 |
| | FTRS "Regulars" * | 40 | 60 | 80 | 80 |
| | Liability | 6,500 | 5,810 | 5,850 | 5,950 |
| | Surplus/Deficit | -90 | 420 | 240 | 60 |
| | Surplus/Deficit (%) | -1.4% | 7.3% | 4.1% | 1.0% |

| | | | | | | |
|-------|-------|-------|-------|-------|-------|-------|
| 5,920 | 5,930 | 5,900 | 5,890 | 5,870 | 5,910 | 5,900 |
| 5,090 | 5,090 | 5,070 | 5,070 | 5,060 | 5,050 | 5,040 |
| 730 | 720 | 720 | 710 | 700 | 750 | 740 |
| 10 | 10 | 10 | 10 | 10 | 10 | 10 |
| 10 | 10 | 10 | 10 | 10 | 10 | 10 |
| 80 | 90 | 90 | 90 | 90 | 90 | 90 |
| 5,950 | 5,950 | 5,960 | 5,960 | 5,960 | 5,960 | 5,960 |
| -30 | -20 | -60 | -60 | -80 | -50 | -60 |
| -0.5% | -0.4% | -0.9% | -1.1% | -1.4% | -0.8% | -1.0% |

| | | | | | |
|---------|-------------------------------|--------|--------|--------|--------|
| Ratings | | 26,880 | 25,190 | 24,410 | 24,050 |
| | Warfare (General Service) | 5,140 | 4,720 | 4,480 | 4,450 |
| | Warfare (Submarine) | 830 | 790 | 760 | 780 |
| | Warfare (Air) | 790 | 730 | 690 | 690 |
| | Engineering (General Service) | 4,490 | 4,100 | 3,740 | 3,540 |
| | Engineering (Submarine) | 2,130 | 2,060 | 1,970 | 1,920 |
| | Engineering (Air) | 3,260 | 3,110 | 3,030 | 2,970 |
| | Logistics | 2,880 | 2,680 | 2,630 | 2,560 |
| | Medical | 950 | 920 | 900 | 890 |
| | Royal Marines General Service | 5,960 | 5,630 | 5,720 | 5,700 |
| | Royal Marines Band Service | 340 | 340 | 340 | 340 |
| | FTRS "Regulars" * | 60 | 90 | 120 | 170 |
| | Unknown | - | - | - | - |
| | Transfer Trainees | 50 | 30 | 30 | 40 |
| | Liability | 28,300 | 24,720 | 24,490 | 24,340 |
| | Surplus/Deficit | -1,420 | 470 | -80 | -280 |
| | Surplus/Deficit (%) | -5.0% | 1.9% | -0.3% | -1.2% |

| | | | | | | |
|--------|--------|--------|--------|--------|--------|--------|
| 23,970 | 23,880 | 23,810 | 23,860 | 23,860 | 23,890 | 23,820 |
| 3,740 | 3,780 | 3,770 | 3,770 | 3,810 | 3,810 | 3,800 |
| 580 | 580 | 570 | 570 | 570 | 570 | 570 |
| 680 | 640 | 640 | 630 | 650 | 650 | 650 |
| 4,250 | 4,220 | 4,210 | 4,250 | 4,260 | 4,270 | 4,260 |
| 2,100 | 2,080 | 2,070 | 2,080 | 2,070 | 2,060 | 2,080 |
| 2,920 | 2,900 | 2,890 | 2,910 | 2,900 | 2,900 | 2,890 |
| 2,540 | 2,530 | 2,520 | 2,520 | 2,510 | 2,520 | 2,510 |
| 860 | 860 | 870 | 870 | 880 | 890 | 880 |
| 5,730 | 5,740 | 5,700 | 5,680 | 5,660 | 5,660 | 5,620 |
| 340 | 340 | 350 | 340 | 340 | 340 | 340 |
| 180 | 170 | 180 | 180 | 180 | 180 | 180 |
| - | - | - | - | - | - | - |
| 50 | 50 | 50 | 50 | 40 | 40 | 40 |
| 24,310 | 24,300 | 24,290 | 24,290 | 24,280 | 24,270 | 24,270 |
| -340 | -420 | -480 | -420 | -420 | -380 | -450 |
| -1.4% | -1.7% | -2.0% | -1.7% | -1.7% | -1.6% | -1.8% |

Feb-16 Edition.

From Jan 10 and elsewhere in this document, Liability split by Officer/Rating, Branch & Spec is taken from the relevant Planning Liability (currently PL 2-15) scaled to DP15. Monthly liability figures are calculated using a straight line interpolation between the relevant PL April points (currently April 15 and April 16).

* In this table only, the FTRS Strength has been split into those that are counted against the Regular Liability (FTRS "Regulars"), and those that are not (FTRS "Non-Regulars").

1b

Summary of Royal Navy and Royal Marines Strength by Service and Arm

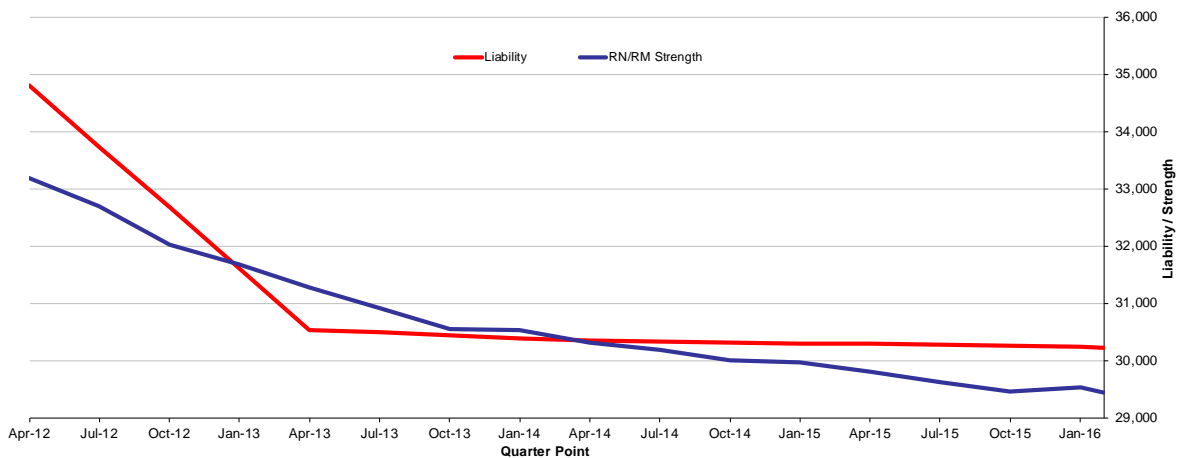
| | |
|---------------|---------------|
| Total | 29,720 |
| Royal Navy | 22,780 |
| Royal Marines | 6,940 |

| | Officers Ratings | |
|---------------|-------------------------|---------------|
| Total | 5,900 | 23,820 |
| Royal Navy | 5,130 | 17,650 |
| Royal Marines | 770 | 6,170 |

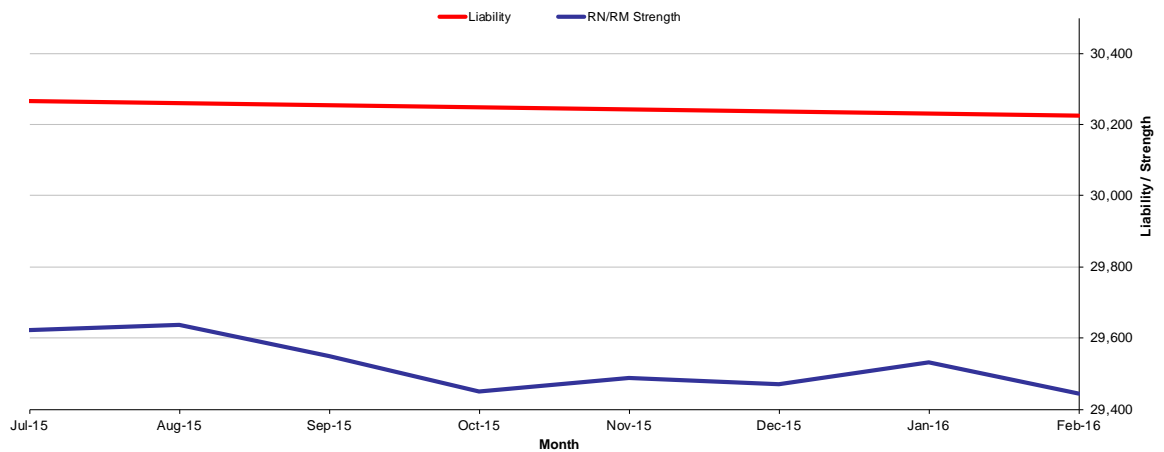
| | GS | SM | FAA |
|---------------|---------------|--------------|--------------|
| Total | 20,860 | 4,050 | 4,810 |
| Royal Navy | 13,990 | 4,050 | 4,740 |
| Royal Marines | 6,870 | - | 70 |

The strength shown is the total trained Regular and FTRS Regular Personnel
RN/RM figures are the Royal Navy and Royal Marines combined

1c Historic Trained Regular Royal Navy and Royal Marines Strengths and Liability by Quarter



1d Recent Trained Regular Royal Navy and Royal Marines Strengths and Liability by Month



2a

Trained Regular Royal Navy and Royal Marine Officer Strengths* and Liability** by Branch, Specialisation and Arm

| Branch | Specialisation | GS | SM | FAA | Total | Liability Surplus/Deficit |
|----------------------|------------------------------------|--------------|------------|--------------|--------------|---------------------------|
| Total | | 3,770 | 850 | 1,170 | 5,790 | -170 |
| Warfare | | 1,330 | 310 | 890 | 2,530 | 2,610 |
| | Air Traffic Control | - | - | 70 | 70 | |
| | Aviation | - | - | 40 | 40 | |
| | Communications | 20 | - | - | 20 | |
| | Intelligence Officer | 130 | - | - | 130 | |
| | Fighter Controller | 40 | - | - | 40 | |
| | General Service Warfare | 280 | - | - | 280 | |
| | Hydrographic/Meteorological | 160 | - | - | 160 | |
| | Mine Clearance Diver | 80 | - | - | 80 | |
| | Mine Warfare | 20 | - | - | 20 | |
| | Observer | - | - | 310 | 310 | |
| | Pilot | - | - | 440 | 440 | |
| | RM Pilot | - | - | 40 | 40 | |
| | Principal Warfare Officer (PWO) | 220 | - | - | 220 | |
| | PWO (Above Water) | 150 | - | - | 150 | |
| | PWO (Communications) | 60 | - | - | 60 | |
| | PWO (Navigation) | 70 | - | - | 70 | |
| | PWO (Under Water) | 80 | - | - | 80 | |
| | Royal Navy Police | 20 | - | - | 20 | |
| | Submariner | - | 310 | - | 310 | |
| | Unspecified | - | - | - | - | |
| Engineer | | 830 | 450 | 280 | 1,550 | 1,600 |
| | Air Engineer | - | - | 280 | 280 | |
| | Engineer (Information Systems) | 50 | - | - | 50 | |
| | Engineer (Info Systems Submarines) | - | ~ | - | ~ | |
| | Engineer (Training Manager) | 200 | - | - | 200 | |
| | Eng (Training Manager Submarines) | - | 20 | - | 20 | |
| | Marine Engineer | 250 | - | - | 250 | |
| | Marine Engineer (Submarines) | - | 230 | - | 230 | |
| | Weapons Engineer | 330 | - | - | 330 | |
| | Weapons Engineer (Submarines) | - | 190 | - | 190 | |
| | Unspecified | - | - | - | - | |
| Logistics | | 400 | 100 | - | 500 | 470 |
| | Barrister | 40 | ~ | - | 40 | |
| | Chartered Management Accountant | 20 | ~ | - | 20 | |
| | Logistics | 340 | 90 | - | 440 | |
| | Logistics Family Services | ~ | - | - | ~ | |
| Medical | | 440 | - | - | 440 | 530 |
| | Medical Officer | 250 | - | - | 250 | |
| | Medical Services | 60 | - | - | 60 | |
| | Dental Services | 50 | - | - | 50 | |
| | QARNNS | 80 | - | - | 80 | |
| Chaplain | | 60 | - | - | 60 | 60 |
| Royal Marines | | 720 | - | - | 720 | 690 |
| | Band Service | 10 | - | - | 10 | |
| | General Service | 710 | - | - | 710 | |

* The Trained Strength shown in this table does not include the Transfer Trainee Strength, hence the slightly lower figures.

** Smoothed Planning Liability 2-15 has been used and scaled to the interpolated monthly DP15 total figure.

Feb-16 Edition.

2b

Trained Regular Royal Navy and Royal Marines Rating Strengths* and Liability** by Branch, Specialisation and Arm

| Branch | Specialisation | GS | SM | FAA | Total | Liability | Surplus/Deficit |
|--|------------------------------------|---------------|--------------|--------------|---------------|---------------|-----------------|
| Total | | 16,870 | 3,120 | 3,600 | 23,600 | 24,270 | -670 |
| Warfare (General Service) | | 3,740 | - | 60 | 3,800 | 4,000 | -210 |
| | Warfare Specialist (WS) | 30 | - | - | 30 | | |
| | WS (Above Water Tactical) | 510 | - | - | 510 | | |
| | WS (Above Water Warfare) | 440 | - | - | 440 | | |
| | WS (Under Water) | 270 | - | - | 270 | | |
| | WS (Electronic Warfare) | 370 | - | - | 370 | | |
| | Hydrographic/Meteorological (H/M) | 10 | - | - | 10 | | |
| | H/M (Hydrographic) | 100 | - | - | 100 | | |
| | H/M (Meteorological) | 80 | - | 20 | 100 | | |
| | Mine Warfare | 320 | - | - | 320 | | |
| | Diver | 360 | - | - | 360 | | |
| | Seaman Specialist | 620 | - | - | 620 | | |
| | Naval Airman (Photographer) | - | - | 40 | 40 | | |
| | Physical Training Instructor | 200 | - | - | 200 | | |
| | Royal Navy Police | 220 | - | - | 220 | | |
| | Communications Technician | 220 | - | - | 220 | | |
| Warfare (Submarine) | | - | 570 | - | 570 | 580 | -10 |
| | Coxswain (Submarines) | - | 30 | - | 30 | | |
| | Warfare Spec (Sensors Submarines) | - | 320 | - | 320 | | |
| | Warfare Spec (Tactical Submarines) | - | 230 | - | 230 | | |
| Warfare (Air) | | - | - | 650 | 650 | 720 | -60 |
| | Aircrewman | - | - | 90 | 90 | | |
| | Naval Airman (Aircraft Control) | - | - | 110 | 110 | | |
| | Naval Airman (Aircraft Handler) | - | - | 410 | 410 | | |
| | Royal Marines Aircrewman | - | - | 40 | 40 | | |
| Engineer General Service | | 4,260 | - | - | 4,260 | 4,700 | -450 |
| | Marine Engineer Mechanic | 100 | - | - | 100 | | |
| | Weapon Engineer Mechanic | 30 | - | - | 30 | | |
| | Eng Technician (Marine Engineers) | 1,980 | - | - | 1,980 | | |
| | Eng Technician (Weapon Engineers) | 2,150 | - | - | 2,150 | | |
| Engineer Submariner | | - | 2,080 | - | 2,080 | 2,200 | -120 |
| | Eng Tech (Marine Eng Submarines) | - | 1,080 | - | 1,080 | | |
| | Eng Tech (Weapon Eng Submarines) | - | 980 | - | 980 | | |
| | Marine Engineer Mechanic | - | 20 | - | 20 | | |
| | Weapon Engineer Mechanic | - | - | - | - | | |
| Air Engineer | | - | - | 2,890 | 2,890 | 2,840 | 50 |
| | Air Engineer Artificer | - | - | 60 | 60 | | |
| | Air Engineer Mechanic | - | - | 80 | 80 | | |
| | Air Engineer Technician | - | - | 2,610 | 2,610 | | |
| | Naval Airman (Survival Equipment) | - | - | 140 | 140 | | |
| Logistics | | 2,120 | 390 | - | 2,510 | 2,560 | -60 |
| | Caterer | 70 | 10 | - | 80 | | |
| | Chef | 520 | 140 | - | 660 | | |
| | Family Service | 30 | - | - | 30 | | |
| | Steward | 290 | 70 | - | 360 | | |
| | Supply Chain | 480 | 100 | - | 580 | | |
| | Writer | 640 | 80 | - | 720 | | |
| | Royal Marines Chef | 80 | - | - | 80 | | |
| Medical | | 800 | 80 | - | 880 | 920 | -40 |
| | Dental Hygienist | 10 | - | - | 10 | | |
| | Dental Surgery Assistant | 80 | - | - | 80 | | |
| | Medical Assistant | 440 | 80 | - | 520 | | |
| | Medical Technician | 50 | - | - | 50 | | |
| | Naval Nurse | 160 | - | - | 160 | | |
| | Royal Marines Medical Assistant | 60 | - | - | 60 | | |
| Royal Marines (excl Chefs, Med Asst & Aircrewmen) | | 5,960 | - | - | 5,960 | 5,730 | 230 |
| | Band Service | 270 | - | - | 270 | | |
| | Bugler | 70 | - | - | 70 | | |
| | General Service | 5,620 | - | - | 5,620 | | |

* The Trained Strength shown in this table does not include the Transfer Trainee Strength, hence the slightly lower figures.

** Smoothed Planning Liability 2-15 has been used and scaled to the interpolated monthly DP15 total figure.

**Royal Navy and Royal Marines FTRS Officer
(Regular and Non-Regular) Strengths by Branch,
Specialisation and Arm**

| Branch | Specialisation | GS | SM | FAA | Total |
|-------------------------------|------------------------------------|------------|-----------|-----------|------------|
| Total | | 160 | 20 | 20 | 200 |
| Warfare | | 60 | 10 | 20 | 90 |
| | Air Traffic Control | - | - | ~ | ~ |
| | Aviation | - | - | ~ | ~ |
| | Communications | ~ | - | - | ~ |
| | Intelligence Officer | - | - | - | - |
| | Fighter Controller | - | - | - | - |
| | General Service Warfare | 10 | - | - | 10 |
| | Hydrographic/Meteorological | - | - | - | - |
| | Mine Clearance Diver | ~ | - | - | ~ |
| | Mine Warfare | 10 | - | - | 10 |
| | Observer | - | - | 10 | 10 |
| | Pilot | - | - | 10 | 10 |
| | RM Pilot | - | - | - | - |
| | Principal Warfare Officer (PWO) | 10 | - | - | 10 |
| | PWO (Above Water) | 10 | - | - | 10 |
| | PWO (Communications) | ~ | - | - | ~ |
| | PWO (Navigation) | ~ | - | - | ~ |
| | PWO (Under Water) | 10 | - | - | 10 |
| | Royal Navy Police | - | - | - | - |
| | Submariner | - | 10 | - | 10 |
| | Unspecified | ~ | ~ | - | ~ |
| Engineer | | 20 | ~ | ~ | 20 |
| | Air Engineer | - | - | ~ | ~ |
| | Engineer (Information Systems) | ~ | - | - | ~ |
| | Engineer (Info Systems Submarines) | - | - | - | - |
| | Engineer (Training Manager) | ~ | - | - | ~ |
| | Eng (Training Manager Submarines) | - | - | - | - |
| | Marine Engineer | ~ | - | - | ~ |
| | Marine Engineer (Submarines) | - | ~ | - | ~ |
| | Weapons Engineer | ~ | - | - | ~ |
| | Weapons Engineer (Submarines) | - | ~ | - | ~ |
| | Unspecified | - | - | - | - |
| Logistics | | 20 | - | - | 20 |
| | Barrister | - | - | - | - |
| | Chartered Management Accountant | - | - | - | - |
| | Logistics | 20 | - | - | 20 |
| | Logistics Family Services | - | - | - | - |
| Medical | | ~ | - | - | ~ |
| | Medical Officer | ~ | - | - | ~ |
| | Medical Services | - | - | - | - |
| | Dental Services | - | - | - | - |
| | QARNNS | ~ | - | - | ~ |
| Chaplain | | ~ | - | - | ~ |
| Careers | | ~ | - | - | ~ |
| Royal Marines | | 10 | - | - | 10 |
| | Band Service | - | - | - | - |
| | General Service | 10 | - | - | 10 |
| Royal Navy Reserves | | 50 | - | - | 50 |
| Royal Marines Reserves | | - | - | - | - |

Royal Navy and Royal Marines FTRS Rating (Regular and Non-Regular) Strengths by Branch, Specialisation and Arm

| Branch | Specialisation | GS | SM | FAA | Total |
|--|-----------------------------------|------------|-----------|-----------|------------|
| Total | | 390 | 60 | 20 | 470 |
| Warfare (General Service) | | 90 | - | 10 | 90 |
| | Warfare Specialist (WS) | - | - | - | - |
| | WS (Above Water Tactical) | 10 | - | - | 10 |
| | WS (Above Water Warfare) | 20 | - | - | 20 |
| | WS (Under Water) | ~ | - | - | ~ |
| | WS (Electronic Warfare) | ~ | - | - | ~ |
| | Hydrographic/Meteorological (H/M) | ~ | - | - | ~ |
| | H/M (Hydrographic) | - | - | - | - |
| | H/M (Meteorological) | - | - | ~ | ~ |
| | Mine Warfare | ~ | - | - | ~ |
| | Diver | 10 | - | - | 10 |
| | Seaman Specialist | 20 | - | - | 20 |
| | Weapons Analyst | ~ | - | - | ~ |
| | Naval Airman (Photographer) | - | - | ~ | ~ |
| | Physical Training Instructor | 10 | - | - | 10 |
| | Royal Navy Police | 10 | - | - | 10 |
| | Communications Technician | ~ | - | - | ~ |
| | Unspecified | - | - | - | - |
| Warfare (Submarine) | | - | 10 | - | 10 |
| | Coxswain (Submarines) | - | ~ | - | ~ |
| | Warfare Specialist (Sensors Sub) | - | ~ | - | ~ |
| | Warfare Specialist (Tactical Sub) | - | ~ | - | ~ |
| Warfare (Air) | | - | - | ~ | ~ |
| | Aircrewman | - | - | ~ | ~ |
| | Naval Airman (Aircraft Control) | - | - | ~ | ~ |
| | Naval Airman (Aircraft Handler) | - | - | ~ | ~ |
| | RM Aircrewman | - | - | - | - |
| | Unspecified | - | - | - | - |
| Engineer General Service | | 50 | - | - | 50 |
| | Marine Engineer Mechanic | 10 | - | - | 10 |
| | Weapon Engineer Mechanic | 10 | - | - | 10 |
| | Eng Technician (Marine Engineer) | 10 | - | - | 10 |
| | Eng Technician (Weapon Engineer) | 20 | - | - | 20 |
| | Unspecified | - | - | - | - |
| Engineer Submariner | | - | 50 | - | 50 |
| | Eng Technician (Marine Eng Sub) | - | 30 | - | 30 |
| | Eng Technician (Weapon Eng Sub) | - | 20 | - | 20 |
| | Marine Engineer Mechanic | - | ~ | - | ~ |
| | Weapon Engineer Mechanic | - | - | - | - |
| Air Engineer | | - | - | ~ | ~ |
| | Air Engineer Artificer | - | - | ~ | ~ |
| | Air Engineer Mechanic | - | - | ~ | ~ |
| | Air Engineer Technician | - | - | - | - |
| | Naval Airman (Survival Equipment) | - | - | ~ | ~ |
| Logistics | | 30 | ~ | - | 30 |
| | Caterer | 10 | ~ | - | 10 |
| | Chef | ~ | ~ | - | ~ |
| | Family Service | - | - | - | - |
| | Steward | ~ | - | - | ~ |
| | Supply Chain | 10 | ~ | - | 10 |
| | Writer | 10 | - | - | 10 |
| | Unspecified | - | - | - | - |
| Medical | | ~ | - | - | ~ |
| | Dental Hygienist | - | - | - | - |
| | Dental Surgery Assistant | - | - | - | - |
| | Medical Assistant | ~ | - | - | ~ |
| | Medical Technician | - | - | - | - |
| | RM Medical Assistant | - | - | - | - |
| | Naval Nurse | ~ | - | - | ~ |
| | Unspecified | - | - | - | - |
| Royal Marines (excl Chefs, Med Asst & Aircrewmen) | | 40 | - | - | 40 |
| | Band Service | - | - | - | - |
| | Bugler | - | - | - | - |
| | General Service | 40 | - | - | 40 |
| Royal Navy Reserves | | ~ | - | - | ~ |
| Royal Marines Reserves | | - | - | - | - |
| Careers | | 170 | - | - | 170 |

Trained* Regular Royal Navy and Royal Marine Officer Strengths and Liability
by Branch and Paid Rank*****

| Branch | | OF7 and above | OF-6 | OF-5 | OF-4 | OF-3 | OF-2 | OF-1 | Total |
|--------------------------------------|---------------------|------------------|--------|---------|--------|--------|--------|------|--------|
| Total | Strength | 40 | 80 | 280 | 1,000 | 2,010 | 2,140 | 240 | 5,790 |
| | Liability | 30 | 80 | 260 | 1,010 | 1,990 | 2,580 | - | 5,960 |
| | Surplus / Deficit | ~ | ~ | 20 | -10 | 20 | -440 | 240 | -170 |
| Warfare | | | | | | | | | |
| | Strength | 20 | 30 | 110 | 370 | 910 | 1,000 | 80 | 2,530 |
| | Liability | 20 | 30 | 100 | 370 | 870 | 1,210 | - | 2,610 |
| | Surplus / Deficit | 10 | ~ | ~ | 10 | 40 | -210 | 80 | -80 |
| | % Surplus / Deficit | 36.1% | -12.2% | 4.4% | 1.8% | 4.8% | -17.4% | - | -3.1% |
| Engineer | | | | | | | | | |
| | Strength | 10 | 20 | 90 | 270 | 550 | 580 | 40 | 1,550 |
| | Liability | 10 | 20 | 70 | 250 | 550 | 690 | - | 1,600 |
| | Surplus / Deficit | -10 | ~ | 10 | 10 | ~ | -110 | 40 | -50 |
| | % Surplus / Deficit | -45.4% | -8.0% | 16.9% | 4.8% | 0.3% | -15.5% | - | -3.3% |
| Logistics | | | | | | | | | |
| | Strength | ~ | 10 | 30 | 80 | 170 | 190 | 20 | 500 |
| | Liability | - | 10 | 20 | 90 | 160 | 200 | - | 470 |
| | Surplus / Deficit | ~ | ~ | 10 | ~ | 10 | -10 | 20 | 30 |
| | % Surplus / Deficit | - | 54.0% | 42.7% | -4.8% | 6.8% | -6.2% | - | 6.6% |
| Medical | | | | | | | | | |
| | Strength | ~ | ~ | 30 | 110 | 170 | 110 | 10 | 440 |
| | Liability | ~ | 10 | 30 | 140 | 200 | 150 | - | 530 |
| | Surplus / Deficit | ~ | ~ | ~ | -30 | -40 | -40 | 10 | -90 |
| | % Surplus / Deficit | 2.7% | -63.6% | -12.5% | -21.9% | -22.7% | 5.9% | - | -17.8% |
| Chaplain | | | | | | | | | |
| | Strength | ~ | ~ | - | 50 | - | - | - | 60 |
| | Liability | ~ | ~ | ~ | 60 | - | - | - | 60 |
| | Surplus / Deficit | ~ | ~ | ~ | ~ | - | - | - | ~ |
| | % Surplus / Deficit | 2.7% | - | -100.0% | -6.0% | - | - | - | -5.6% |
| Royal Marines General Service | | | | | | | | | |
| | Strength | ~ | 10 | 30 | 120 | 210 | 250 | 90 | 710 |
| | Liability | ~ | 10 | 30 | 110 | 210 | 330 | - | 680 |
| | Surplus / Deficit | see note 1 | ~ | ~ | 10 | ~ | -80 | 90 | 30 |
| | % Surplus / Deficit | see note 1 | 34.4% | -4.9% | 7.4% | 2.4% | -23.7% | - | 4.2% |
| Royal Marines Band Service | | | | | | | | | |
| | Strength | - | - | - | ~ | ~ | 10 | ~ | 10 |
| | Liability | - | - | - | ~ | ~ | ~ | - | 10 |
| | Surplus / Deficit | - | - | - | ~ | ~ | ~ | ~ | ~ |
| | % Surplus / Deficit | - | - | - | 2.6% | 29.9% | 24.4% | - | 34.8% |
| Careers/Other | | | | | | | | | |
| | Strength | - | - | - | - | - | - | - | - |
| | Liability | - | - | - | - | - | - | - | - |
| | Surplus / Deficit | - | - | - | - | - | - | - | - |
| | % Surplus / Deficit | - | - | - | - | - | - | - | - |
| Unspecified | | | | | | | | | |
| | Strength | - | - | - | - | - | - | - | - |
| | Liability | - | - | - | - | - | - | - | - |

Feb-16 Edition.

* The Trained Strength shown in this table does not include the Transfer Trainee Strength, hence the slightly lower figures.

** Smoothed Planning Liability 2-15 has been used and scaled to the interpolated monthly DP15 total figure.

*** Figures exclude FTRS personnel in regular posts.

¹ At OF7+ RM GS Officers are assigned under the same regime as their RN counterparts, occupying common appointments where liability is attributable across the RN/RM OF7+ population.

| Branch | | OR-9 | OR-8 ³ | OR-7 | OR-6 | OR-4 | OR-3 | OR-2 | Total |
|---|---------------------|--------|-------------------|--------|--------|--------|----------------|--------|---------------|
| Total | | | | | | | | | |
| | Strength | 880 | 430 | 2,820 | 3,610 | 5,510 | 680 | 9,670 | 23,600 |
| | Liability | 890 | 220 | 2,950 | 4,450 | 6,120 | see note 2 670 | 9,640 | 24,270 |
| | Surplus / Deficit | ~ | 200 | -120 | -840 | -610 | 680 | 30 | -670 |
| Warfare (General Service) | | | | | | | | | |
| | Strength | 140 | ~ | 480 | 660 | 970 | - | 1,550 | 3,800 |
| | Liability | 130 | - | 480 | 780 | 1,180 | - | 1,440 | 4,000 |
| | Surplus / Deficit | 10 | ~ | ~ | -120 | -210 | - | 110 | -210 |
| | % Surplus / Deficit | 10.9% | - | 0.4% | -15.6% | -17.6% | - | 7.4% | -5.1% |
| Warfare (Submarine) | | | | | | | | | |
| | Strength | 30 | - | 80 | 80 | 120 | - | 270 | 570 |
| | Liability | 30 | - | 80 | 90 | 130 | - | 260 | 580 |
| | Surplus / Deficit | ~ | - | ~ | -10 | -10 | - | 10 | -10 |
| | % Surplus / Deficit | 19.4% | - | -5.9% | -9.2% | -9.3% | - | 2.7% | -2.2% |
| Warfare (Air) | | | | | | | | | |
| | Strength | 20 | - | 80 | 140 | 160 | - | 260 | 650 |
| | Liability | 30 | - | 90 | 170 | 240 | - | 200 | 720 |
| | Surplus / Deficit | ~ | - | -10 | -30 | -80 | - | 60 | -60 |
| | % Surplus / Deficit | -13.8% | - | -11.8% | -17.9% | -34.3% | - | 31.1% | -8.9% |
| Engineering (General Service) | | | | | | | | | |
| | Strength | 310 | 40 | 670 | 700 | 940 | - | 1,590 | 4,260 |
| | Liability | 310 | - | 770 | 1,030 | 1,090 | - | 1,500 | 4,700 |
| | Surplus / Deficit | ~ | 40 | -110 | -330 | -150 | - | 90 | -450 |
| | % Surplus / Deficit | 0.9% | - | -13.8% | -31.8% | -13.4% | - | 6.0% | -9.5% |
| Engineering (Submarine) | | | | | | | | | |
| | Strength | 90 | 140 | 330 | 270 | 490 | - | 770 | 2,080 |
| | Liability | 140 | - | 380 | 530 | 510 | - | 640 | 2,200 |
| | Surplus / Deficit | -50 | 140 | -50 | -270 | -20 | - | 130 | -120 |
| | % Surplus / Deficit | -33.0% | - | -12.6% | -49.7% | -4.8% | - | 20.4% | -5.4% |
| Engineering (Air) | | | | | | | | | |
| | Strength | 100 | 10 | 440 | 610 | 730 | - | 1,000 | 2,890 |
| | Liability | 90 | - | 440 | 610 | 740 | - | 960 | 2,840 |
| | Surplus / Deficit | ~ | 10 | ~ | ~ | -10 | - | 40 | 50 |
| | % Surplus / Deficit | 5.5% | - | -0.4% | 0.2% | -0.9% | - | 4.1% | 1.7% |
| Logistics | | | | | | | | | |
| | Strength | 60 | ~ | 240 | 400 | 730 | 10 | 1,070 | 2,510 |
| | Liability | 60 | - | 220 | 420 | 770 | - | 1,090 | 2,560 |
| | Surplus / Deficit | ~ | ~ | 20 | -30 | -40 | 10 | -20 | -60 |
| | % Surplus / Deficit | 1.5% | - | 6.9% | -6.0% | -4.6% | - | -1.8% | -2.2% |
| Medical | | | | | | | | | |
| | Strength | 30 | ~ | 110 | 160 | 260 | ~ | 310 | 880 |
| | Liability | 30 | - | 120 | 190 | 320 | - | 260 | 920 |
| | Surplus / Deficit | ~ | ~ | -10 | -30 | -60 | ~ | 50 | -40 |
| | % Surplus / Deficit | -11.5% | - | -5.4% | -13.4% | -17.6% | - | 17.2% | -4.3% |
| Royal Marines General Service Excludes RM Med Assistant, RM Aircrewman, RM Band, RM Careers Service and RM Chefs | | | | | | | | | |
| | Strength | 90 | 220 | 370 | 550 | 1,050 | 670 | 2,660 | 5,620 |
| | Liability | 70 | 210 | 340 | 580 | 1,100 | see note 2 670 | 3,090 | 5,400 |
| | Surplus / Deficit | 20 | 10 | 30 | -40 | -40 | 670 | -430 | 220 |
| | % Surplus / Deficit | 26.5% | 5.7% | 9.6% | -6.2% | -4.0% | - | -13.9% | 4.1% |
| Royal Marines Band Service | | | | | | | | | |
| | Strength | 10 | 10 | 30 | 50 | 60 | - | 180 | 340 |
| | Liability | ~ | 10 | 20 | 50 | 60 | - | 180 | 330 |
| | Surplus / Deficit | ~ | ~ | ~ | ~ | ~ | - | ~ | 10 |
| | % Surplus / Deficit | 45.3% | 25.3% | 18.1% | -5.3% | 3.6% | - | 0.1% | 2.6% |
| Unspecified | | | | | | | | | |
| | Strength | - | - | - | - | - | - | - | - |
| CAPPS | | | | | | | | | |
| | Liability | - | - | - | - | - | - | - | - |

Feb-16 Edition.

* The Trained Strength shown in this table does not include the Transfer Trainee Strength, hence the slightly lower figures.

** Smoothed Planning Liability 2-15 has been used and scaled to the interpolated monthly DP15 total figure.

*** Figures exclude FTRS personnel in regular posts.

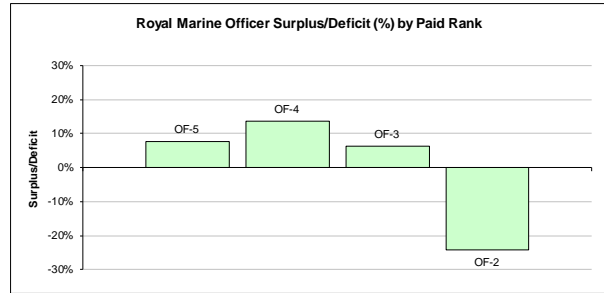
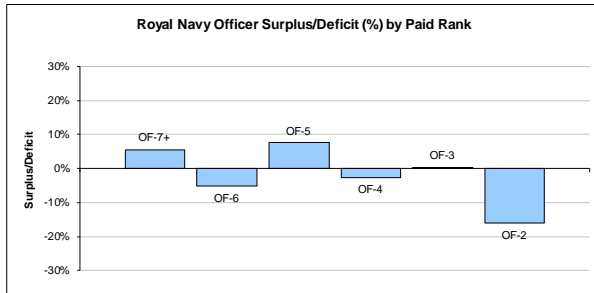
² Royal Marines are the only part of the RN/RM Service to currently contain OR3 strength.

As no separate liability for OR3 is produced for the RN/RM, the liability for OR2 also includes OR3.

³ The latest liability (PL2-15) no longer includes RN OR8. This rank will still be reflected in RN strength.

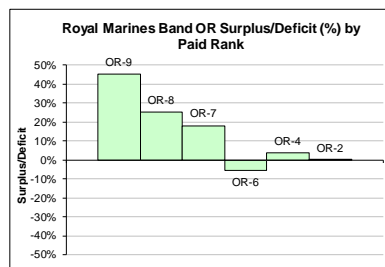
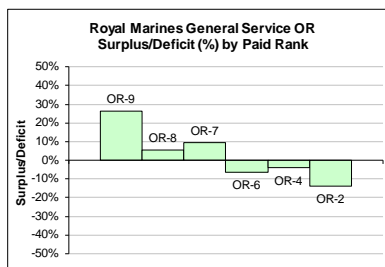
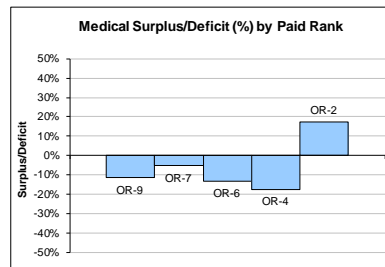
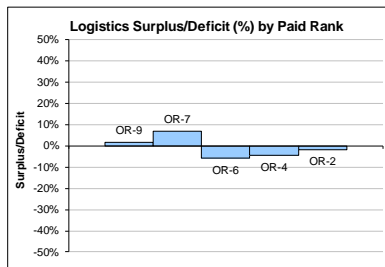
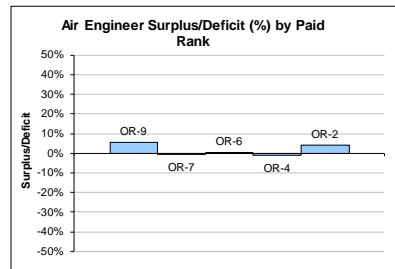
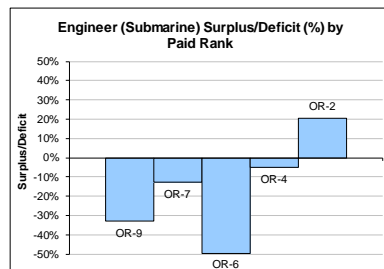
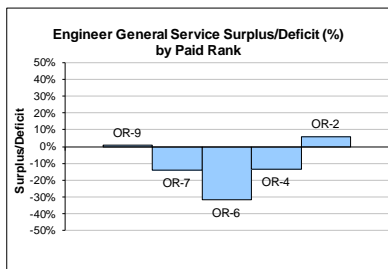
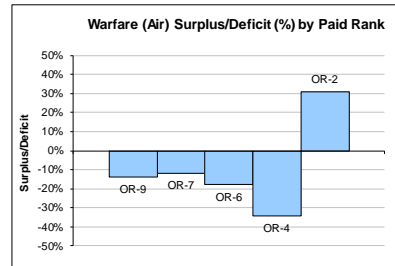
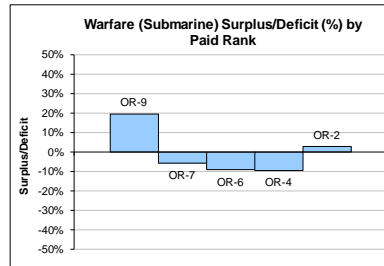
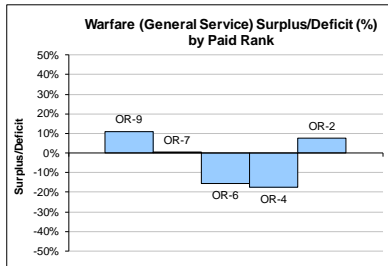
3c

Trained Regular Royal Navy and Royal Marine Officer Surplus/Deficit by Paid Rank



3d

Trained Regular Royal Navy and Royal Marine Rating Surplus/Deficit by Paid Rank



| 3e Royal Navy and Royal Marine Officer FTRS (Regular and Non-Regular) Strength by Branch and Paid Rank | | | | | | | | |
|---|------|-----|-----|-----|-----|-----|-----|-------|
| Branch | OF7+ | OF6 | OF5 | OF4 | OF3 | OF2 | OF1 | Total |
| Total | - | ~ | 10 | 50 | 100 | 40 | ~ | 200 |
| Warfare | - | - | ~ | 20 | 50 | 10 | - | 90 |
| Engineer | - | - | ~ | ~ | 10 | ~ | - | 20 |
| Logistics | - | ~ | ~ | ~ | 10 | - | ~ | 20 |
| Medical | - | - | - | ~ | ~ | - | - | ~ |
| Medical Services | - | - | - | - | - | - | - | - |
| Dental | - | - | - | - | - | - | - | - |
| QARNNS | - | - | - | - | - | ~ | - | ~ |
| Chaplain | - | - | - | ~ | - | - | - | ~ |
| Royal Marines General Service | - | - | ~ | ~ | 10 | ~ | - | 10 |
| Royal Marines Band Service | - | - | - | - | - | - | - | - |
| Royal Navy Reserves | - | - | ~ | 10 | 30 | 10 | - | 50 |
| Royal Marines Reserves | - | - | - | - | - | - | - | - |
| Careers/Other | - | - | - | - | - | ~ | - | ~ |

Feb-16 Edition.

| 3f Royal Navy and Royal Marine Rating FTRS (Regular and Non-Regular) Strength by Branch and Paid Rank | | | | | | | | |
|--|-----|-----|-----|-----|-----|-----|-----|-------|
| Branch | OR9 | OR8 | OR7 | OR6 | OR4 | OR3 | OR2 | Total |
| Total | 60 | 20 | 190 | 170 | 20 | ~ | 10 | 470 |
| Warfare (General Service) | 10 | ~ | 40 | 30 | 10 | - | ~ | 90 |
| Warfare (Submarine) | ~ | - | ~ | ~ | ~ | - | - | 10 |
| Warfare (Air) | - | - | ~ | - | - | - | - | ~ |
| Engineering (General Service) | 10 | ~ | 30 | 10 | ~ | - | - | 50 |
| Engineering (Submarine) | ~ | ~ | 20 | 10 | ~ | - | - | 50 |
| Engineering (Air) | ~ | - | ~ | ~ | - | - | - | ~ |
| Logistics | ~ | - | 20 | 10 | ~ | - | - | 30 |
| Medical | ~ | - | - | ~ | ~ | - | - | ~ |
| Royal Marines General Service | ~ | ~ | 20 | 10 | ~ | ~ | 10 | 40 |
| <i>Excludes RM Med Assistant, RM Aircrewman, RM Band and RM Careers Service</i> | | | | | | | | |
| Royal Marines Band Service | - | - | - | - | - | - | - | - |
| Royal Navy Reserves | ~ | - | ~ | - | - | - | - | ~ |
| Royal Marines Reserves | - | - | - | - | - | - | - | - |
| Career | 30 | ~ | 50 | 90 | - | - | - | 170 |
| Unspecified | - | - | - | - | - | - | - | - |

4a (GS) Trained* Regular Royal Navy and Royal Marine Officer General Service Strengths by Branch and Specialisation and Paid Rank

| Branch | Specialisation | OF-7 and above | OF-6 | OF-5 | OF-4 | OF-3 | OF-2 | OF-1 | Total |
|----------------------|---------------------------------|-------------------|-----------|------------|------------|--------------|--------------|------------|--------------|
| Total | | 20 | 60 | 180 | 670 | 1,320 | 1,330 | 200 | 3,770 |
| Warfare | | 10 | 20 | 50 | 190 | 490 | 520 | 50 | 1,330 |
| | Communications | - | - | - | ~ | 10 | 20 | - | 20 |
| | Intelligence Officer | - | - | - | 10 | 50 | 70 | ~ | 130 |
| | Fighter Controller | - | - | - | - | ~ | 30 | - | 40 |
| | General Service Warfare | - | - | - | ~ | 20 | 220 | 40 | 280 |
| | Hydrographic/Meteorological | - | - | ~ | 20 | 60 | 80 | ~ | 160 |
| | Mine Clearance Diver | - | - | - | ~ | 30 | 40 | ~ | 80 |
| | Mine Warfare | - | - | - | - | ~ | 10 | - | 20 |
| | Principal Warfare Officer (PWO) | ~ | - | 10 | 30 | 160 | 20 | - | 220 |
| | PWO (Above Water) | ~ | 10 | 20 | 60 | 50 | - | - | 150 |
| | PWO (Communications) | ~ | ~ | ~ | 20 | 30 | ~ | - | 60 |
| | PWO (Navigation) | ~ | ~ | ~ | 20 | 30 | 10 | - | 70 |
| | PWO (Under Water) | ~ | ~ | 10 | 30 | 30 | - | - | 80 |
| | Royal Navy Police | - | - | - | ~ | 10 | 10 | ~ | 20 |
| | Unspecified | - | - | - | - | - | - | - | - |
| Engineer | | ~ | 10 | 40 | 140 | 310 | 300 | 20 | 830 |
| | Engineer (Information Systems) | - | - | ~ | 10 | 30 | 10 | - | 50 |
| | Engineer (Training Manager) | - | ~ | 10 | 20 | 80 | 80 | 10 | 200 |
| | Marine Engineer | ~ | ~ | 20 | 50 | 100 | 80 | 10 | 250 |
| | Weapons Engineer | - | 10 | 20 | 60 | 120 | 120 | 10 | 330 |
| | Unspecified | - | - | - | - | - | - | - | - |
| Logistics | | - | 10 | 20 | 60 | 140 | 150 | 20 | 400 |
| | Barrister | - | ~ | ~ | 10 | 20 | ~ | - | 40 |
| | Chartered Management Accountant | - | - | ~ | ~ | 10 | - | - | 20 |
| | Logistics | - | ~ | 10 | 40 | 110 | 150 | 20 | 340 |
| | Logistics Family Services | - | - | - | - | ~ | ~ | - | ~ |
| Medical | | ~ | ~ | 30 | 110 | 170 | 110 | 10 | 440 |
| | Medical Officer | ~ | ~ | 20 | 80 | 100 | 50 | - | 250 |
| | Medical Services | - | - | ~ | 10 | 20 | 20 | ~ | 60 |
| | Dental Services | - | - | 10 | 20 | 20 | 10 | - | 50 |
| | QARNNS | - | ~ | ~ | 10 | 30 | 30 | 10 | 80 |
| Chaplain | | ~ | ~ | - | 50 | - | - | - | 60 |
| Other | | - | - | - | - | - | - | - | - |
| Royal Marines | | ~ | 10 | 30 | 120 | 220 | 250 | 90 | 720 |
| | Band Service | - | - | - | ~ | ~ | 10 | ~ | 10 |
| | General Service | ~ | 10 | 30 | 120 | 210 | 250 | 90 | 710 |

* The Trained Strength shown in this table does not include the Transfer Trainee Strength, hence the slightly lower figures.

Feb-16 Edition.

4a (SM)**Trained* Regular Royal Navy and Royal Marines Officer Submarine Strengths by Branch and Specialisation and Paid Rank**

| Branch | Specialisation | OF-7 and above | OF-6 | OF-5 | OF-4 | OF-3 | OF-2 | OF-1 | Total |
|------------------|------------------------------------|-------------------|-----------|-----------|------------|------------|------------|-----------|------------|
| Total | | 10 | 10 | 50 | 150 | 260 | 350 | 20 | 850 |
| Warfare | | ~ | 10 | 20 | 40 | 90 | 130 | 20 | 310 |
| | Submariner | ~ | 10 | 20 | 40 | 90 | 130 | 20 | 310 |
| Engineer | | 10 | 10 | 30 | 80 | 140 | 180 | ~ | 450 |
| | Engineer (Info Systems Submarines) | - | - | - | - | ~ | ~ | - | ~ |
| | Engineer (Training Mgr Submarines) | - | - | ~ | 10 | ~ | 10 | - | 20 |
| | Marine Engineer (Submarines) | ~ | ~ | 10 | 40 | 70 | 100 | - | 230 |
| | Weapons Engineer (Submarines) | ~ | ~ | 20 | 30 | 60 | 80 | ~ | 190 |
| | Unspecified | - | - | - | - | - | - | - | - |
| Logistics | | ~ | ~ | ~ | 30 | 30 | 40 | - | 100 |
| | Barrister | - | - | - | ~ | ~ | - | - | ~ |
| | Chartered Management Accountant | - | - | - | ~ | ~ | - | - | ~ |
| | Logistics | ~ | ~ | ~ | 20 | 30 | 40 | - | 90 |
| | Logistics Family Services | - | - | - | - | - | - | - | - |
| Other | | - | - | - | - | - | - | - | - |

* The Trained Strength shown in this table does not include the Transfer Trainee Strength, hence the slightly lower figures.

4a (FAA)**Trained* Regular Royal Navy and Royal Marine Officer Fleet Air Arm Strengths by Branch and Specialisation and Paid Rank**

| Branch | Specialisation | OF-7 and above | OF-6 | OF-5 | OF-4 | OF-3 | OF-2 | OF-1 | Total |
|-----------------|---------------------|-------------------|-----------|-----------|------------|------------|------------|-----------|--------------|
| Total | | 10 | 10 | 50 | 180 | 440 | 460 | 20 | 1,170 |
| Warfare | | 10 | 10 | 40 | 140 | 340 | 360 | 10 | 890 |
| | Air Traffic Control | - | - | ~ | ~ | 20 | 40 | ~ | 70 |
| | Aviation | - | - | - | ~ | 10 | 20 | 10 | 40 |
| | Observer | ~ | ~ | 10 | 70 | 120 | 110 | - | 310 |
| | Pilot | ~ | ~ | 20 | 60 | 170 | 190 | - | 440 |
| | RM Pilot | - | - | ~ | 10 | 20 | 10 | - | 40 |
| | Unspecified | - | - | - | - | - | - | - | - |
| Engineer | | - | ~ | 10 | 50 | 100 | 100 | 10 | 280 |
| | Air Engineer | - | ~ | 10 | 50 | 100 | 100 | 10 | 280 |
| Other | | - | - | - | - | - | - | - | - |

* The Trained Strength shown in this table does not include the Transfer Trainee Strength, hence the slightly lower figures.

Feb-16 Edition.

4b (GS)
**Trained* Regular Rating General Service Strengths
by Branch and Specialisation and Paid Rank**

| Branch | Specialisation | OR-9 | OR-8 | OR-7 | OR-6 | OR-4 | OR-3 | OR-2 | Total |
|----------------------|-----------------------------------|------------|------------|--------------|--------------|--------------|------------|--------------|---------------|
| Total | | 640 | 280 | 1,830 | 2,420 | 3,870 | 680 | 7,160 | 16,870 |
| Warfare | | 140 | ~ | 460 | 640 | 950 | - | 1,540 | 3,740 |
| | Warfare Specialist (WS) | - | - | - | - | - | - | 30 | 30 |
| | WS (Above Water Tactical) | 20 | - | 70 | 100 | 120 | - | 200 | 510 |
| | WS (Above Water Warfare) | 20 | - | 70 | 80 | 110 | - | 160 | 440 |
| | WS (Under Water) | 10 | - | 30 | 50 | 60 | - | 120 | 270 |
| | WS (Electronic Warfare) | 10 | - | 40 | 60 | 80 | - | 180 | 370 |
| | Hydrographic/Meteorological (H/M) | - | - | - | - | - | - | 10 | 10 |
| | H/M (Hydrographic) | ~ | - | 10 | 10 | 20 | - | 50 | 100 |
| | H/M (Meteorological) | - | - | ~ | 10 | 30 | - | 40 | 80 |
| | Mine Warfare | 10 | - | 20 | 50 | 60 | - | 180 | 320 |
| | Diver | 10 | - | 20 | 50 | 90 | - | 180 | 360 |
| | Seaman Specialist | 20 | - | 40 | 50 | 120 | - | 380 | 620 |
| | Physical Training Instructor | 10 | - | 30 | 60 | 100 | - | - | 200 |
| | Royal Navy Police | 10 | - | 40 | 80 | 100 | - | - | 220 |
| | Communications Technician | 20 | ~ | 90 | 40 | 50 | - | 20 | 220 |
| | Unspecified | - | - | - | - | - | - | - | - |
| Engineer | | 310 | 40 | 670 | 700 | 940 | - | 1,590 | 4,260 |
| | Marine Engineer Mechanic | 30 | - | 50 | 20 | - | - | - | 100 |
| | Weapon Engineer Mechanic | 10 | - | 20 | 10 | - | - | - | 30 |
| | Eng Technician (Marine Engineer) | 150 | 10 | 240 | 320 | 460 | - | 780 | 1,980 |
| | Eng Technician (Weapon Engineer) | 120 | 30 | 360 | 350 | 480 | - | 810 | 2,150 |
| | Unspecified | - | - | - | - | - | - | - | - |
| Logistics | | 60 | ~ | 200 | 330 | 630 | 10 | 880 | 2,120 |
| | Caterer | 20 | - | 30 | 20 | - | - | - | 70 |
| | Steward | - | - | 10 | 20 | 100 | - | 170 | 290 |
| | Chef | ~ | - | 20 | 70 | 170 | - | 260 | 520 |
| | Writer | 10 | - | 70 | 110 | 190 | - | 260 | 640 |
| | Supply Chain | 20 | - | 50 | 80 | 160 | - | 180 | 480 |
| | Family Services | ~ | - | 10 | 20 | - | - | - | 30 |
| | Royal Marine Chef | ~ | ~ | 10 | 20 | 20 | 10 | 20 | 80 |
| Medical | | 30 | ~ | 100 | 140 | 230 | ~ | 290 | 800 |
| | Dental Hygienist | - | - | ~ | ~ | 10 | - | - | 10 |
| | Dental Surgery Assistant | ~ | - | ~ | 10 | 30 | - | 40 | 80 |
| | Medical Assistant | 20 | - | 50 | 60 | 100 | - | 220 | 440 |
| | Naval Nurse | ~ | - | 30 | 40 | 70 | - | ~ | 160 |
| | Royal Marines Medical Assistant | ~ | - | - | 10 | 10 | ~ | 40 | 60 |
| | Medical Technician | ~ | ~ | 20 | 20 | 20 | - | ~ | 50 |
| Other | | - | - | - | - | - | - | - | - |
| Royal Marines | | 100 | 240 | 400 | 600 | 1,110 | 670 | 2,850 | 5,960 |
| | Royal Marines Band Service | 10 | 10 | 30 | 50 | 60 | - | 180 | 340 |
| | Royal Marines General Service | 90 | 220 | 370 | 550 | 1,050 | 670 | 2,660 | 5,620 |

* The Trained Strength shown in this table does not include the Transfer Trainee Strength, hence the slightly lower figures.

Feb-16 Edition.

4b (SM)**Trained* Regular Rating Submarine Strengths
by Branch and Specialisation and Paid Rank**

| Branch | Specialisation | OR-9 | OR-8 | OR-7 | OR-6 | OR-4 | OR-3 | OR-2 | Total |
|------------------|-----------------------------------|------------|------------|------------|------------|------------|------|--------------|--------------|
| Total | | 120 | 140 | 450 | 440 | 730 | - | 1,250 | 3,120 |
| Warfare | | 30 | - | 80 | 80 | 120 | - | 270 | 570 |
| | Coxswain (Submarines) | 10 | - | 20 | - | - | - | - | 30 |
| | Warfare Spec (Sensors Submarine) | 10 | - | 30 | 50 | 70 | - | 150 | 320 |
| | Warfare Spec (Tactical Submarine) | 10 | - | 30 | 30 | 40 | - | 120 | 230 |
| | Unspecified | - | - | - | - | - | - | - | - |
| Engineer | | 90 | 140 | 330 | 270 | 490 | - | 770 | 2,080 |
| | Marine Engineer Mechanic | - | - | 20 | - | - | - | - | 20 |
| | Weapon Engineer Mechanic | - | - | - | - | - | - | - | - |
| | Eng Technician (Marine Engineer) | 50 | 90 | 180 | 120 | 240 | - | 390 | 1,080 |
| | Eng Technician (Weapon Engineer) | 40 | 40 | 130 | 150 | 240 | - | 380 | 980 |
| | Unspecified | - | - | - | - | - | - | - | - |
| Logistics | | - | - | 30 | 70 | 100 | - | 190 | 390 |
| | Caterer | - | - | 10 | - | - | - | - | 10 |
| | Steward | - | - | - | 10 | 20 | - | 40 | 70 |
| | Chef | - | - | 10 | 30 | 40 | - | 70 | 140 |
| | Writer | - | - | 10 | 20 | 20 | - | 30 | 80 |
| | Supply Chain | - | - | 10 | 20 | 20 | - | 50 | 100 |
| | Family Services | - | - | - | - | - | - | - | - |
| Medical | | - | - | 10 | 20 | 30 | - | 20 | 80 |
| | Medical Assistant | - | - | 10 | 20 | 30 | - | 20 | 80 |
| Other | | - | - | - | - | - | - | - | - |

* The Trained Strength shown in this table does not include the Transfer Trainee Strength, hence the slightly lower figures.

4b (FAA)**Trained* Regular Rating Fleet Air Arm Strengths
by Branch and Specialisation and Paid Rank**

| Branch | Specialisation | OR-9 | OR-8 | OR-7 | OR-6 | OR-4 | OR-3 | OR-2 | Total |
|----------------------------------|-----------------------------------|------------|-----------|------------|------------|------------|------|--------------|--------------|
| Total | | 120 | 10 | 540 | 760 | 910 | - | 1,260 | 3,600 |
| Warfare (Air) | | 20 | - | 80 | 140 | 160 | - | 260 | 650 |
| | Aircrewmen | 10 | - | 20 | 40 | 20 | - | - | 90 |
| | Naval Airman (Aircraft Control) | - | - | 20 | 30 | 40 | - | 20 | 110 |
| | Naval Airman (Aircraft Handler) | 10 | - | 30 | 50 | 90 | - | 240 | 410 |
| | RM Aircrewmen | - | - | 10 | 10 | 10 | - | - | 40 |
| | Unspecified | - | - | - | - | - | - | - | - |
| Warfare (General Service) | | - | - | 20 | 20 | 20 | - | - | 60 |
| | H/M (Meteorological) | - | - | 10 | - | - | - | - | 20 |
| | Naval Airman (Photographer) | - | - | 10 | 10 | 20 | - | - | 40 |
| Engineer | | 100 | 10 | 440 | 610 | 730 | - | 1,000 | 2,890 |
| | Air Engineer Artificer | - | - | 60 | - | - | - | - | 60 |
| | Air Engineer Mechanic | 10 | - | 30 | 40 | - | - | - | 80 |
| | Air Engineer Technician | 80 | 10 | 340 | 550 | 680 | - | 950 | 2,610 |
| | Naval Airman (Survival Equipment) | - | - | 10 | 20 | 50 | - | 50 | 140 |
| Other | | - | - | - | - | - | - | - | - |

Feb-16 Edition.

* The Trained Strength shown in this table does not include the Transfer Trainee Strength, hence the slightly lower figures.

5a

Untrained Regular Royal Navy and Royal Marines Officer Strengths by Branch and Paid Rank

| | OF4+ | OF3 | OF2 | OF1 | OFD | Total |
|--|------|-----|-----|-----|-----|-------|
|--|------|-----|-----|-----|-----|-------|

| | | | | | | |
|--------------|----------|----------|------------|------------|------------|--------------|
| Total | ~ | - | 160 | 610 | 220 | 1,000 |
|--------------|----------|----------|------------|------------|------------|--------------|

| | | | | | | |
|---------------------------|---|---|----|-----|-----|------------|
| Warfare | - | - | 90 | 320 | 130 | 540 |
| Engineer | - | - | 20 | 140 | 70 | 240 |
| Logistics | - | - | ~ | 30 | 20 | 60 |
| Medical | - | - | 40 | 50 | - | 80 |
| Chaplain | ~ | - | - | - | - | ~ |
| No Specialisation | - | - | - | - | - | - |
| RM General Service | - | - | - | 60 | - | 60 |
| RM Band Service | - | - | - | ~ | - | ~ |
| Careers/Other | - | - | - | - | - | - |

Feb-16 Edition.

Note: Midshipmen are counted as OF-D

| 5b Untrained Regular Royal Navy and Royal Marine Rating Strengths by Branch and Paid Rank | | | | | |
|---|------|-----|-----|--------------|--------------|
| | OR6+ | OR4 | OR3 | OR2 | Total |
| Total | - | - | - | 2,120 | 2,120 |
| Warfare (General Service) | - | - | - | 330 | 330 |
| Warfare Specialist | - | - | - | 40 | 40 |
| Warfare Specialist (Above Water Tactical) | - | - | - | 70 | 70 |
| Hydrographic/Meteorological | - | - | - | 20 | 20 |
| H/M (Hydrographic) | - | - | - | ~ | ~ |
| H/M (Meteorological) | - | - | - | - | - |
| Mine Warfare | - | - | - | 30 | 30 |
| Diver | - | - | - | 40 | 40 |
| Seaman Specialist | - | - | - | 100 | 100 |
| Naval Airman (Photographer) | - | - | - | - | - |
| Communications Technician | - | - | - | 30 | 30 |
| Unspecified | - | - | - | - | - |
| Warfare (Submarine) | - | - | - | 40 | 40 |
| Warfare Specialist (Sensors Submarine) | - | - | - | 20 | 20 |
| Warfare Specialist (Tactical Submarine) | - | - | - | 30 | 30 |
| Unspecified | - | - | - | - | - |
| Warfare (Air) | - | - | - | 60 | 60 |
| Aircrewman | - | - | - | 20 | 20 |
| Naval Airman (Aircraft Control) | - | - | - | ~ | ~ |
| Naval Airman (Aircraft Handler) | - | - | - | 40 | 40 |
| Unspecified | - | - | - | - | - |
| Engineer General Service | - | - | - | 420 | 420 |
| Eng Technician (Marine Engineer) | - | - | - | 240 | 240 |
| Eng Technician (Weapon Engineer) | - | - | - | 180 | 180 |
| Unspecified | - | - | - | - | - |
| Engineer Submariner | - | - | - | 190 | 190 |
| Eng Technician (Marine Engineer Sub) | - | - | - | 110 | 110 |
| Eng Technician (Weapon Engineer Sub) | - | - | - | 80 | 80 |
| Unspecified | - | - | - | - | - |
| Air Engineer | - | - | - | 300 | 300 |
| Air Engineer Technician | - | - | - | 290 | 290 |
| Naval Airman (Survival Equipment) | - | - | - | 10 | 10 |
| Unspecified | - | - | - | ~ | ~ |
| Logistics | - | - | - | 100 | 100 |
| Chef | - | - | - | 40 | 40 |
| Steward | - | - | - | 20 | 20 |
| Supply Chain | - | - | - | 30 | 30 |
| Writer | - | - | - | 20 | 20 |
| Unspecified | - | - | - | - | - |
| Medical | - | - | - | 80 | 80 |
| Dental Surgery Assistant | - | - | - | ~ | ~ |
| Medical Assistant | - | - | - | 60 | 60 |
| Medical Technician | - | - | - | ~ | ~ |
| Naval Nurse | - | - | - | 20 | 20 |
| Unspecified | - | - | - | - | - |
| Royal Marines General Service | - | - | - | 520 | 520 |
| Royal Marines Band Service | - | - | - | 60 | 60 |
| Band | - | - | - | 60 | 60 |
| Bugler | - | - | - | ~ | ~ |
| Unspecified | - | - | - | - | - |
| Unknown | - | - | - | - | - |

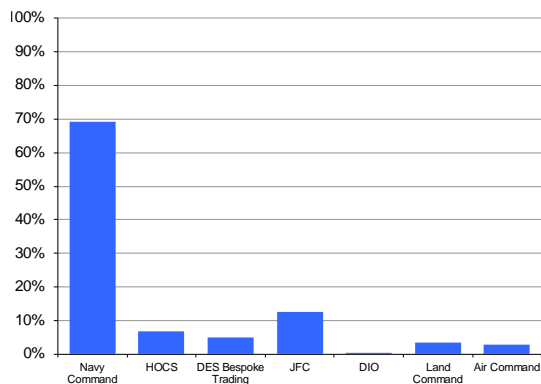
Officers

| ILB | OF9 | OF8 | OF7 | OF6 | OF5 | OF4 | OF3 | OF2 | OF1 | Total | % of Total Trained Strength |
|---------------------|-----|-----|-----|-----|-----|-------|-------|-------|-----|-------|-----------------------------------|
| Total | ~ | 10 | 30 | 80 | 280 | 1,000 | 2,010 | 2,140 | 240 | 5,790 | 100.0% |
| Navy Command | ~ | ~ | 20 | 40 | 120 | 530 | 1,420 | 1,660 | 210 | 4,000 | 69.1% |
| HOCS | - | ~ | 10 | 20 | 60 | 160 | 120 | 40 | ~ | 400 | 6.9% |
| DES Bespoke Trading | - | ~ | ~ | 10 | 40 | 70 | 90 | 90 | ~ | 300 | 5.1% |
| JFC | - | ~ | ~ | 20 | 60 | 200 | 250 | 180 | 20 | 720 | 12.5% |
| DIO | - | - | - | - | ~ | ~ | ~ | - | - | ~ | 0.1% |
| Land Command | - | - | - | - | ~ | 20 | 80 | 100 | 10 | 210 | 3.6% |
| Air Command | - | - | - | ~ | ~ | 20 | 60 | 80 | ~ | 160 | 2.8% |

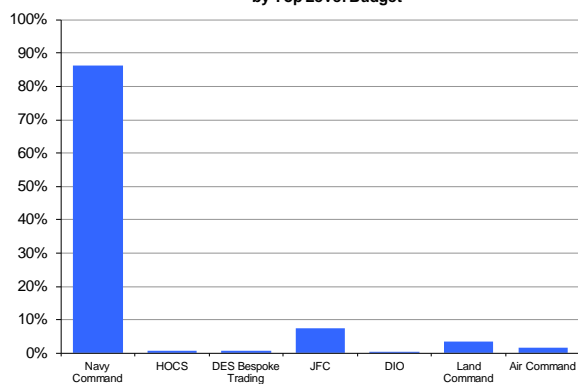
Ratings

| ILB | OR9 | OR8 | OR7 | OR6 | OR4 | OR3 | OR2 | Total | % of Total Trained Strength |
|---------------------|-----|-----|-------|-------|-------|-----|-------|--------|-----------------------------------|
| Total | 880 | 430 | 2,820 | 3,610 | 5,510 | 680 | 9,670 | 23,600 | 100.0% |
| Navy Command | 700 | 350 | 2,160 | 2,940 | 4,760 | 530 | 8,940 | 20,380 | 86.3% |
| HOCS | 20 | ~ | 60 | 50 | 40 | - | 20 | 190 | 0.8% |
| DES Bespoke Trading | 60 | 10 | 60 | ~ | ~ | - | ~ | 150 | 0.6% |
| JFC | 60 | 40 | 290 | 310 | 460 | 130 | 440 | 1,740 | 7.4% |
| DIO | - | - | - | - | ~ | - | - | ~ | 0.0% |
| Land Command | 20 | ~ | 130 | 200 | 170 | 20 | 240 | 780 | 3.3% |
| Air Command | 20 | 10 | 120 | 110 | 80 | - | 20 | 360 | 1.5% |

Trained* Regular Royal Navy and Royal Marine Officer strength by Top Level Budget



Trained* Regular Royal Navy and Royal Marine Ratings strength by Top Level Budget



* The Trained Strength shown in this table does not include the Transfer Trainee Strength, hence the slightly lower figures.

7a Trained Regular Royal Navy and Royal Marines Length of Service by Rank

Royal Navy Officers

| Rank | | Average LOS on Promotion | Current Average LOS | Average LOS on Exit | | | |
|----------------|----------------|-----------------------------|------------------------|---------------------|-------------|-------------|-------------|
| | | | | Overall | VO | TX | OW |
| OF7+ | Admiral | 32.7 | 33.6 | 35.1 | 37.0 | 34.9 | N/A |
| OF6 | Commodore | 28.1 | 31.3 | 31.3 | 29.0 | 35.9 | N/A |
| OF5 | Captain | 25.1 | 29.3 | 32.6 | 31.3 | 34.7 | 32.3 |
| OF4 | Commander | 19.3 | 23.4 | 27.3 | 25.5 | 30.3 | 27.6 |
| OF3 | Lt Commander | 13.3 | 16.7 | 18.9 | 18.1 | 21.4 | 15.0 |
| OF2 | Lieutenant | 7.4 | 10.8 | 13.1 | 13.1 | 15.2 | 11.2 |
| OF1 | Sub-Lieutenant | N/A | 8.4 | 4.2 | N/A | N/A | 4.2 |
| OFD | Midshipman | N/A | N/A | N/A | N/A | N/A | N/A |
| Overall | | 15.9 | 16.4 | 20.0 | 18.7 | 24.8 | 14.2 |

Royal Marine Officers

| Rank | | Average LOS on Promotion | Current Average LOS | Average LOS on Exit | | | |
|----------------|-------------------------|-----------------------------|------------------------|---------------------|-------------|-------------|-------------|
| | | | | Overall | VO | TX | OW |
| OF7+ | Major General and Above | N/A | 32.8 | 34.1 | N/A | 34.1 | N/A |
| OF6 | Brigadier | 26.4 | 29.7 | 31.4 | 29.3 | 35.6 | N/A |
| OF5 | Colonel | 21.2 | 25.9 | 28.5 | 28.5 | N/A | N/A |
| OF4 | Lt Colonel | 17.7 | 21.2 | 29.3 | 27.7 | 33.4 | N/A |
| OF3 | Major | 16.1 | 15.6 | 15.9 | 14.0 | 17.3 | 21.1 |
| OF2 | Captain | 14.6 | 11.1 | 14.1 | 12.5 | 17.5 | 13.2 |
| OF1 | Lieutenant | 3.9 | 5.3 | 2.0 | N/A | N/A | 2.0 |
| Overall | | 16.5 | 14.5 | 18.4 | 17.5 | 22.0 | 13.8 |

Royal Navy Ratings

| Rank | | Average LOS on Promotion | Current Average LOS | Average LOS on Exit | | | | |
|----------------|---------------------------|-----------------------------|------------------------|---------------------|-------------|-------------|------------|-------------|
| | | | | Overall | VO | TX | OW | PTO |
| OR-9 | Warrant Officer 1st Class | 26.3 | 28.8 | 29.8 | 28.3 | 32.3 | 22.3 | N/A |
| OR-8 | Warrant Officer 2nd Class | 20.9 | 25.1 | 27.6 | 27.0 | 28.9 | 25.7 | 16.2 |
| OR-7 | Chief Petty Officer | 19.5 | 21.0 | 22.7 | 22.0 | 25.8 | 18.6 | 15.6 |
| OR-6 | Petty Officer | 12.5 | 15.9 | 19.0 | 18.5 | 23.5 | 15.7 | 12.4 |
| OR-4 | Leading Hand | 6.9 | 10.2 | 12.4 | 11.0 | 19.6 | 13.0 | 8.3 |
| OR-2 | Able Rating | N/A | 4.3 | 6.2 | 6.6 | 6.5 | 5.6 | 3.4 |
| Overall | | 13.2 | 11.4 | 13.0 | 11.9 | 23.3 | 8.6 | 11.7 |

Royal Marine Ratings

| Rank | | Average LOS on Promotion | Current Average LOS | Average LOS on Exit | | | | |
|----------------|---------------------------|-----------------------------|------------------------|---------------------|------------|-------------|------------|-------------|
| | | | | Overall | VO | TX | OW | PTO |
| OR-9 | Warrant Officer 1st Class | 24.8 | 27.6 | 27.4 | 26.9 | 29.0 | 24.3 | 25.3 |
| OR-8 | Warrant Officer 2nd Class | 19.1 | 24.3 | 24.4 | 24.4 | 24.8 | 23.6 | 22.6 |
| OR-7 | Colour Sergeant | 16.9 | 20.3 | 21.9 | 24.4 | 22.6 | 26.5 | 15.8 |
| OR-6 | Sergeant | 13.0 | 15.2 | 16.2 | 14.3 | 22.9 | 15.4 | 14.0 |
| OR-4 | Corporal | 8.3 | 10.6 | 12.3 | 10.1 | 22.3 | 12.9 | N/A |
| OR-3 | Lance Corporal | N/A | 6.4 | N/A | N/A | N/A | N/A | N/A |
| OR-2 | Marine | N/A | 4.8 | 7.5 | 6.8 | 20.1 | 7.8 | 1.8 |
| Overall | | 12.4 | 9.4 | 10.4 | 8.4 | 23.2 | 9.8 | 15.2 |

Notes

- 1 Flows data are for the last 12 months
- 2 LOS is taken from entry into the RN/RM
- 3 RN Rating and RM Other Rank exits include Promotion to Officer
- 4 Paid rank has been used for the current average LOS, but all other calculations feature substantive rank

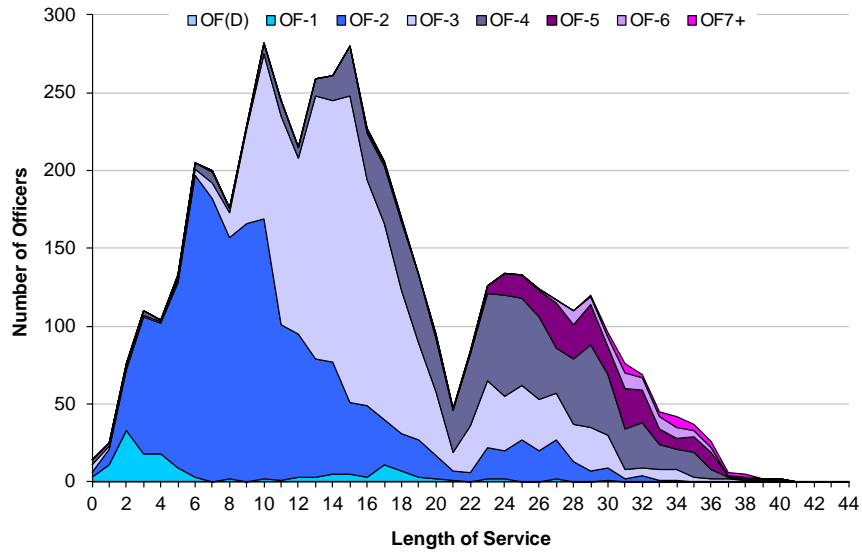
Key

- VO Voluntary Outflow
TX Time Expiry
OW Other Wastage
PTO Promotion to Officer

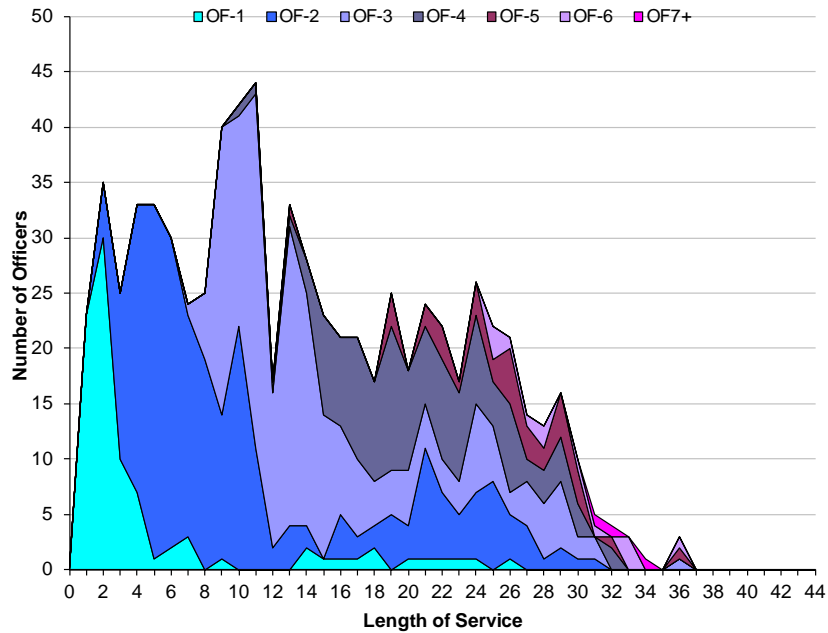
7b

Trained Regular Officer Length of Service by Paid Rank

Royal Navy Officer Strength by Rank and Length of Service



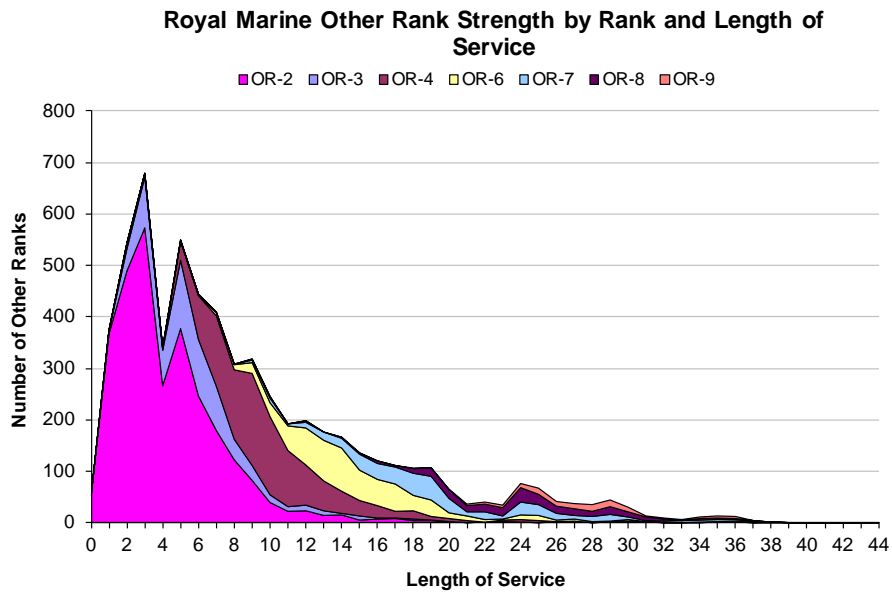
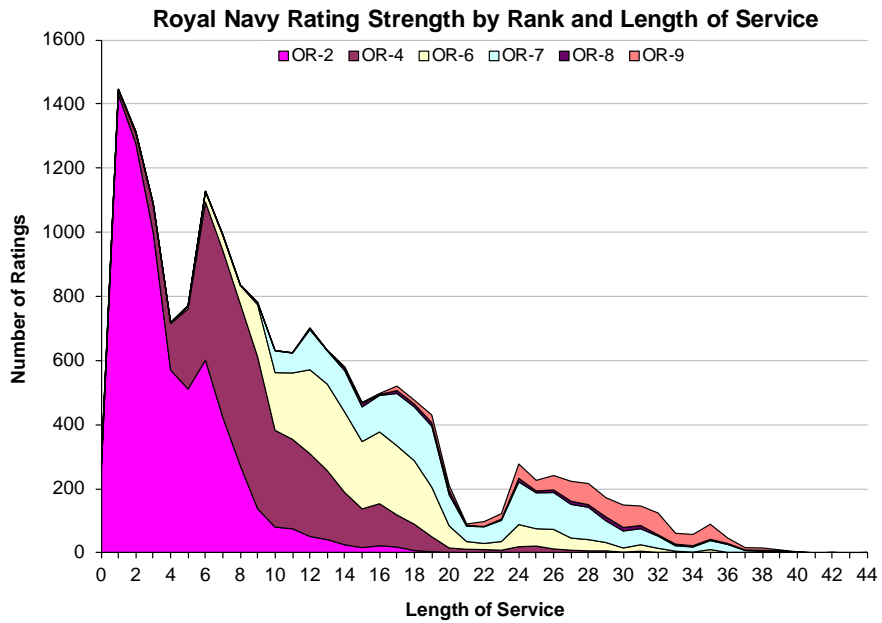
Royal Marine Officer Strength by Rank and Length of Service



Feb-16 Edition.

7c

Trained Regular RN Rating and RM Other Ranks Length of Service by Paid Rank



Feb-16 Edition.

| | | 2011/2012 | | 2012/2013 | | 2013/2014 | | 2014/2015 | | 12 Mths to 1st Feb 16 | | Actual Jan 16 |
|--------------------------------------|-------------------|------------|--------------|------------|--------------|------------|--------------|------------|-------------|-----------------------|-------------|---------------|
| | | Nos. | % | Nos. | % | Nos. | % | Nos. | % | Nos. | % | |
| Total Officers | | 510 | 7.9% | 540 | 8.5% | 460 | 7.6% | 430 | 7.2% | 460 | 7.8% | 30 |
| Royal Navy Officers | | | | | | | | | | | | |
| | Total | 450 | 8.0% | 460 | 8.3% | 410 | 7.6% | 380 | 7.3% | 400 | 7.8% | 30 |
| | Voluntary Outflow | 180 | 3.2% | 200 | 3.7% | 230 | 4.3% | 230 | 4.4% | 240 | 4.7% | 20 |
| | Other Wastage | 40 | 0.7% | 40 | 0.7% | 30 | 0.6% | 30 | 0.7% | 40 | 0.7% | ~ |
| | Time Expiry | 170 | 3.0% | 150 | 2.7% | 140 | 2.7% | 120 | 2.2% | 120 | 2.3% | 10 |
| | Redundancy | 60 | 1.1% | 70 | 1.2% | ~ | 0.1% | ~ | 0.0% | 10 | 0.1% | - |
| Royal Marine Officers | | | | | | | | | | | | |
| | Total | 60 | 7.6% | 80 | 10.5% | 60 | 7.4% | 50 | 6.7% | 60 | 8.0% | ~ |
| | Voluntary Outflow | 20 | 3.0% | 30 | 4.1% | 40 | 5.0% | 20 | 2.9% | 30 | 4.5% | ~ |
| | Other Wastage | 10 | 1.0% | 10 | 1.7% | 10 | 1.1% | 10 | 1.7% | 10 | 1.1% | ~ |
| | Time Expiry | 30 | 3.3% | 20 | 2.9% | 10 | 1.3% | 20 | 2.0% | 20 | 2.4% | ~ |
| | Redundancy | ~ | 0.3% | 10 | 1.8% | - | 0.0% | - | 0.0% | - | 0.0% | - |
| Warfare | | | | | | | | | | | | |
| | Total | 210 | 7.5% | 190 | 7.1% | 200 | 7.4% | 190 | 7.4% | 190 | 7.4% | 10 |
| | Voluntary Outflow | 80 | 3.0% | 90 | 3.1% | 100 | 3.8% | 120 | 4.4% | 110 | 4.4% | 10 |
| | Other Wastage | 20 | 0.8% | 20 | 0.7% | 20 | 0.8% | 20 | 0.8% | 20 | 0.6% | ~ |
| | Time Expiry | 80 | 2.8% | 70 | 2.7% | 70 | 2.8% | 60 | 2.2% | 60 | 2.4% | ~ |
| | Redundancy | 20 | 0.8% | 20 | 0.5% | ~ | 0.0% | - | 0.0% | - | 0.0% | - |
| Engineer | | | | | | | | | | | | |
| | Total | 140 | 7.7% | 150 | 8.6% | 140 | 8.7% | 130 | 8.0% | 130 | 8.5% | 10 |
| | Voluntary Outflow | 60 | 3.2% | 90 | 5.0% | 100 | 5.7% | 80 | 4.6% | 90 | 5.8% | ~ |
| | Other Wastage | 10 | 0.6% | 10 | 0.6% | ~ | 0.3% | 10 | 0.5% | 10 | 0.7% | ~ |
| | Time Expiry | 50 | 2.9% | 50 | 2.8% | 40 | 2.6% | 50 | 2.8% | 30 | 2.0% | ~ |
| | Redundancy | 20 | 1.0% | ~ | 0.2% | - | 0.0% | - | 0.0% | - | 0.0% | - |
| Logistics | | | | | | | | | | | | |
| | Total | 60 | 10.1% | 70 | 12.7% | 20 | 4.8% | 30 | 5.7% | 30 | 5.4% | ~ |
| | Voluntary Outflow | 20 | 2.7% | 10 | 2.6% | 10 | 2.6% | 20 | 3.9% | 20 | 3.6% | ~ |
| | Other Wastage | ~ | 0.3% | ~ | 0.7% | ~ | 0.4% | ~ | 0.2% | - | 0.0% | - |
| | Time Expiry | 20 | 2.7% | 10 | 1.3% | 10 | 1.6% | 10 | 1.6% | 10 | 1.8% | ~ |
| | Redundancy | 20 | 4.3% | 40 | 8.0% | ~ | 0.2% | - | 0.0% | - | 0.0% | - |
| Medical | | | | | | | | | | | | |
| | Total | 40 | 15.2% | 40 | 8.2% | 40 | 7.6% | 30 | 6.1% | 50 | 9.7% | ~ |
| | Voluntary Outflow | 20 | 6.7% | 20 | 3.5% | 20 | 3.0% | 20 | 3.9% | 20 | 4.6% | ~ |
| | Other Wastage | ~ | 1.1% | 10 | 1.1% | 10 | 1.4% | ~ | 1.0% | 10 | 2.0% | ~ |
| | Time Expiry | 20 | 7.4% | 10 | 2.6% | 10 | 2.6% | ~ | 0.8% | 10 | 2.0% | ~ |
| | Redundancy | - | 0.0% | ~ | 0.9% | ~ | 0.6% | ~ | 0.4% | 10 | 1.2% | - |
| Chaplain | | | | | | | | | | | | |
| | Total | 10 | 17.0% | ~ | 5.3% | ~ | 7.0% | ~ | 7.0% | ~ | 8.9% | ~ |
| | Voluntary Outflow | ~ | 6.8% | ~ | 1.8% | ~ | 3.5% | ~ | 3.5% | ~ | 3.6% | ~ |
| | Other Wastage | ~ | 0.0% | ~ | 0.0% | ~ | 0.0% | ~ | 0.0% | ~ | 0.0% | ~ |
| | Time Expiry | 10 | 10.2% | ~ | 3.5% | ~ | 3.5% | ~ | 3.5% | ~ | 5.3% | ~ |
| | Redundancy | - | 0.0% | - | 0.0% | - | 0.0% | - | 0.0% | - | 0.0% | - |
| Other / No Spec | | | | | | | | | | | | |
| | Total | - | N/A | - | N/A | - | N/A | - | N/A | - | N/A | - |
| | Voluntary Outflow | - | N/A | - | N/A | - | N/A | - | N/A | - | N/A | - |
| | Other Wastage | - | N/A | - | N/A | - | N/A | - | N/A | - | N/A | - |
| | Time Expiry | - | N/A | - | N/A | - | N/A | - | N/A | - | N/A | - |
| | Redundancy | - | N/A | - | N/A | - | N/A | - | N/A | - | N/A | - |
| Royal Marines General Service | | | | | | | | | | | | |
| | Total | 60 | 7.1% | 80 | 10.0% | 50 | 7.2% | 50 | 6.2% | 50 | 7.4% | ~ |
| | Voluntary Outflow | 20 | 3.1% | 30 | 3.7% | 40 | 4.8% | 20 | 2.6% | 30 | 3.8% | ~ |
| | Other Wastage | 10 | 1.0% | 10 | 1.6% | 10 | 1.1% | 10 | 1.6% | 10 | 1.1% | ~ |
| | Time Expiry | 20 | 3.0% | 20 | 2.9% | 10 | 1.4% | 20 | 2.0% | 20 | 2.5% | ~ |
| | Redundancy | - | 0.0% | 10 | 1.8% | - | 0.0% | - | 0.0% | - | 0.0% | - |
| Royal Marines Band Service | | | | | | | | | | | | |
| | Total | - | 0.0% | ~ | 16.9% | ~ | 17.9% | - | 0.0% | - | 0.0% | - |
| | Voluntary Outflow | - | 0.0% | ~ | 8.5% | ~ | 17.9% | - | 0.0% | - | 0.0% | - |
| | Other Wastage | - | 0.0% | ~ | 8.5% | - | 0.0% | - | 0.0% | - | 0.0% | - |
| | Time Expiry | - | 0.0% | - | 0.0% | - | 0.0% | - | 0.0% | - | 0.0% | - |
| | Redundancy | - | 0.0% | - | 0.0% | - | 0.0% | - | 0.0% | - | 0.0% | - |
| Career | | | | | | | | | | | | |
| | Total | ~ | N/A | - | N/A | - | N/A | - | N/A | - | N/A | - |
| | Voluntary Outflow | - | N/A | - | N/A | - | N/A | - | N/A | - | N/A | - |
| | Other Wastage | - | N/A | - | N/A | - | N/A | - | N/A | - | N/A | - |
| | Time Expiry | ~ | N/A | - | N/A | - | N/A | - | N/A | - | N/A | - |
| | Redundancy | - | N/A | - | N/A | - | N/A | - | N/A | - | N/A | - |

* Total Figures in this table may deviate from those found in the UK Armed Forces Monthly Personnel Statistics. Please see the front pages for a comment on this.

9b

Trained Regular Royal Navy and Royal Marine Rating Outflow*

| | | 2011/2012 | | 2012/2013 | | 2013/2014 | | 2014/2015 | | 12 Mths to 1st Feb 16 | | Actual Jan 16 |
|-------------------------------|-------|-----------|-------|-----------|-------|-----------|-------|-----------|-------|-----------------------|------|---------------|
| | | Nos. | % | Nos. | % | Nos. | % | Nos. | % | Nos. | % | |
| Total Ratings | | 3,360 | 12.0% | 3,290 | 12.7% | 2,760 | 11.2% | 2,560 | 10.7% | 2,260 | 9.5% | 200 |
| Royal Navy Ratings | | | | | | | | | | | | |
| Total | 2,670 | 12.4% | 2,390 | 12.1% | 2,280 | 12.4% | 2,000 | 11.2% | 1,740 | 9.9% | 140 | |
| Voluntary Outflow | 870 | 4.0% | 1,060 | 5.3% | 1,190 | 6.4% | 1,160 | 6.5% | 980 | 5.6% | 80 | |
| Other Wastage | 640 | 3.0% | 400 | 2.1% | 380 | 2.1% | 400 | 2.2% | 400 | 2.3% | 30 | |
| Time Expiry | 510 | 2.4% | 530 | 2.7% | 610 | 3.3% | 380 | 2.1% | 280 | 1.6% | 20 | |
| Promotion to Officer | 50 | 0.2% | 50 | 0.2% | 70 | 0.4% | 60 | 0.3% | 70 | 0.4% | ~ | |
| Redundancy | 590 | 2.8% | 350 | 1.8% | 40 | 0.2% | - | 0.0% | - | 0.0% | - | |
| Royal Marine Ratings | | | | | | | | | | | | |
| Total | 690 | 10.6% | 900 | 14.6% | 480 | 7.7% | 570 | 9.0% | 520 | 8.4% | 60 | |
| Voluntary Outflow | 380 | 5.8% | 560 | 9.0% | 240 | 3.8% | 340 | 5.3% | 300 | 4.9% | 30 | |
| Other Wastage | 180 | 2.8% | 190 | 3.1% | 130 | 2.1% | 130 | 2.1% | 160 | 2.5% | 10 | |
| Time Expiry | 120 | 1.8% | 140 | 2.3% | 80 | 1.4% | 80 | 1.3% | 50 | 0.8% | 10 | |
| Promotion to Officer | 20 | 0.3% | 10 | 0.2% | 20 | 0.4% | 20 | 0.3% | 20 | 0.2% | 10 | |
| Redundancy | - | 0.0% | - | 0.0% | - | 0.0% | - | 0.0% | - | 0.0% | - | |
| Warfare (General Service) | | | | | | | | | | | | |
| Total | 660 | 12.2% | 710 | 14.5% | 550 | 12.1% | 520 | 11.6% | 380 | 9.4% | 30 | |
| Voluntary Outflow | 260 | 4.9% | 320 | 6.6% | 300 | 6.6% | 310 | 7.0% | 240 | 5.8% | 20 | |
| Other Wastage | 170 | 3.2% | 110 | 2.2% | 110 | 2.5% | 110 | 2.4% | 80 | 1.9% | 10 | |
| Time Expiry | 130 | 2.4% | 140 | 2.7% | 130 | 2.8% | 90 | 2.1% | 50 | 1.3% | ~ | |
| Promotion to Officer | ~ | 0.1% | 10 | 0.2% | 10 | 0.2% | 10 | 0.2% | 10 | 0.3% | ~ | |
| Redundancy | 90 | 1.6% | 140 | 2.7% | ~ | 0.1% | - | 0.0% | - | 0.0% | - | |
| Warfare (Submarine) | | | | | | | | | | | | |
| Total | 80 | 9.0% | 80 | 9.4% | 80 | 9.8% | 70 | 8.7% | 60 | 9.0% | ~ | |
| Voluntary Outflow | 30 | 3.7% | 30 | 4.0% | 30 | 4.0% | 40 | 4.5% | 30 | 4.1% | - | |
| Other Wastage | 20 | 2.0% | 20 | 2.2% | 20 | 2.1% | 20 | 2.3% | 20 | 2.3% | - | |
| Time Expiry | 30 | 3.3% | 30 | 3.2% | 20 | 3.2% | 10 | 1.7% | 20 | 2.4% | - | |
| Promotion to Officer | - | 0.0% | - | 0.0% | ~ | 0.5% | ~ | 0.1% | ~ | 0.3% | ~ | |
| Redundancy | - | 0.0% | - | 0.0% | - | 0.0% | - | 0.0% | - | 0.0% | - | |
| Warfare (Air) | | | | | | | | | | | | |
| Total | 80 | 9.3% | 100 | 13.0% | 80 | 11.5% | 70 | 9.4% | 60 | 8.7% | 10 | |
| Voluntary Outflow | 30 | 3.5% | 20 | 2.6% | 40 | 5.0% | 40 | 5.3% | 30 | 5.1% | ~ | |
| Other Wastage | 10 | 1.3% | 10 | 1.8% | 10 | 1.4% | 10 | 2.0% | 20 | 2.4% | - | |
| Time Expiry | 10 | 1.6% | 20 | 2.0% | 20 | 2.7% | 10 | 1.9% | ~ | 0.6% | - | |
| Promotion to Officer | - | 0.0% | ~ | 0.5% | ~ | 0.4% | ~ | 0.3% | ~ | 0.6% | ~ | |
| Redundancy | 20 | 2.8% | 50 | 6.0% | 10 | 2.0% | - | 0.0% | - | 0.0% | - | |
| Engineering (General Service) | | | | | | | | | | | | |
| Total | 760 | 15.6% | 600 | 14.1% | 680 | 17.4% | 550 | 15.1% | 440 | 11.1% | 30 | |
| Voluntary Outflow | 240 | 5.0% | 310 | 7.3% | 430 | 10.9% | 330 | 9.0% | 240 | 6.2% | 20 | |
| Other Wastage | 180 | 3.7% | 80 | 1.9% | 90 | 2.2% | 110 | 2.9% | 110 | 2.7% | 10 | |
| Time Expiry | 140 | 2.8% | 120 | 2.7% | 150 | 3.9% | 100 | 2.7% | 70 | 1.7% | ~ | |
| Promotion to Officer | 20 | 0.4% | 10 | 0.3% | 20 | 0.4% | 20 | 0.5% | 20 | 0.4% | ~ | |
| Redundancy | 180 | 3.8% | 80 | 2.0% | - | 0.0% | - | 0.0% | - | 0.0% | - | |
| Engineering (Submarine) | | | | | | | | | | | | |
| Total | 160 | 7.4% | 200 | 9.5% | 240 | 11.8% | 240 | 12.6% | 210 | 10.7% | 10 | |
| Voluntary Outflow | 60 | 2.7% | 110 | 5.2% | 120 | 5.9% | 140 | 7.1% | 120 | 5.9% | ~ | |
| Other Wastage | 40 | 2.1% | 30 | 1.5% | 50 | 2.3% | 40 | 2.2% | 50 | 2.4% | 10 | |
| Time Expiry | 50 | 2.4% | 60 | 2.7% | 70 | 3.4% | 60 | 3.0% | 40 | 2.0% | ~ | |
| Promotion to Officer | ~ | 0.2% | ~ | 0.2% | ~ | 0.2% | ~ | 0.3% | 10 | 0.3% | - | |
| Redundancy | - | 0.0% | - | 0.0% | - | 0.0% | - | 0.0% | - | 0.0% | - | |
| Engineering (Air) | | | | | | | | | | | | |
| Total | 460 | 13.1% | 240 | 7.7% | 280 | 9.0% | 260 | 8.7% | 290 | 9.8% | 30 | |
| Voluntary Outflow | 100 | 2.7% | 110 | 3.3% | 120 | 4.0% | 170 | 5.7% | 180 | 6.3% | 20 | |
| Other Wastage | 100 | 2.7% | 50 | 1.6% | 50 | 1.5% | 30 | 1.1% | 40 | 1.4% | ~ | |
| Time Expiry | 60 | 1.7% | 70 | 2.2% | 80 | 2.8% | 40 | 1.3% | 50 | 1.6% | 10 | |
| Promotion to Officer | 10 | 0.4% | 10 | 0.2% | 20 | 0.7% | 20 | 0.5% | 10 | 0.4% | ~ | |
| Redundancy | 200 | 5.6% | 10 | 0.3% | - | 0.0% | - | 0.0% | - | 0.0% | - | |

* Total Figures in this table may deviate from those found in the UK Armed Forces Monthly Personnel Statistics. Please see the front pages for a comment on this.

Feb-16 Edition.

| | | 2011/2012 | | 2012/2013 | | 2013/2014 | | 2014/2015 | | 12 Mths to 1st Feb 16 | | Actual Jan 16 |
|--------------------------------------|----------------------|------------|--------------|------------|--------------|------------|--------------|------------|-------------|-----------------------|-------------|---------------|
| | | Nos. | % | Nos. | % | Nos. | % | Nos. | % | Nos. | % | |
| Logistics | Total | 380 | 12.4% | 340 | 12.2% | 290 | 11.2% | 240 | 9.0% | 240 | 9.4% | 20 |
| | Voluntary Outflow | 110 | 3.7% | 110 | 3.9% | 110 | 4.3% | 110 | 4.4% | 110 | 4.2% | 10 |
| | Other Wastage | 90 | 3.0% | 80 | 2.9% | 50 | 1.8% | 60 | 2.5% | 80 | 3.3% | ~ |
| | Time Expiry | 80 | 2.4% | 90 | 3.3% | 110 | 4.2% | 50 | 2.0% | 40 | 1.5% | ~ |
| | Promotion to Officer | 10 | 0.2% | ~ | 0.1% | 10 | 0.3% | ~ | 0.2% | 10 | 0.3% | ~ |
| | Redundancy | 100 | 3.1% | 60 | 2.1% | 20 | 0.7% | - | 0.0% | - | 0.0% | ~ |
| | | | | | | | | | | | | |
| Medical | Total | 100 | 10.6% | 120 | 12.5% | 90 | 10.2% | 90 | 9.5% | 90 | 9.8% | 10 |
| | Voluntary Outflow | 40 | 4.2% | 50 | 5.1% | 40 | 4.8% | 40 | 4.4% | 40 | 4.6% | ~ |
| | Other Wastage | 30 | 3.3% | 20 | 2.1% | 20 | 2.3% | 20 | 2.3% | 20 | 2.8% | ~ |
| | Time Expiry | 20 | 1.9% | 20 | 2.5% | 20 | 2.4% | 20 | 2.2% | 10 | 1.6% | ~ |
| | Promotion to Officer | 10 | 0.6% | 10 | 1.0% | ~ | 0.5% | ~ | 0.6% | 10 | 0.8% | ~ |
| | Redundancy | 10 | 0.6% | 20 | 1.8% | ~ | 0.2% | - | 0.0% | - | 0.0% | ~ |
| | | | | | | | | | | | | |
| Other / No Spec | Total | ~ | N/A | - | N/A | - | N/A | - | N/A | - | N/A | - |
| | Voluntary Outflow | - | N/A | - | N/A | - | N/A | - | N/A | - | N/A | ~ |
| | Other Wastage | - | N/A | - | N/A | - | N/A | - | N/A | - | N/A | ~ |
| | Time Expiry | ~ | N/A | - | N/A | - | N/A | - | N/A | - | N/A | ~ |
| | Promotion to Officer | - | N/A | - | N/A | - | N/A | - | N/A | - | N/A | ~ |
| | Redundancy | - | N/A | - | N/A | - | N/A | - | N/A | - | N/A | ~ |
| | | | | | | | | | | | | |
| Royal Marines General Service | Total | 680 | 11.1% | 870 | 15.2% | 440 | 7.7% | 520 | 9.0% | 480 | 8.3% | 60 |
| | Voluntary Outflow | 370 | 6.1% | 540 | 9.5% | 220 | 3.9% | 310 | 5.4% | 280 | 4.9% | 30 |
| | Other Wastage | 180 | 2.9% | 180 | 3.2% | 120 | 2.2% | 120 | 2.1% | 140 | 2.5% | 10 |
| | Time Expiry | 110 | 1.8% | 140 | 2.4% | 70 | 1.3% | 70 | 1.2% | 40 | 0.7% | 10 |
| | Promotion to Officer | 20 | 0.3% | 10 | 0.1% | 20 | 0.4% | 20 | 0.3% | 10 | 0.2% | 10 |
| | Redundancy | - | 0.0% | - | 0.0% | - | 0.0% | - | 0.0% | - | 0.0% | ~ |
| | | | | | | | | | | | | |
| Royal Marines Band Service | Total | 10 | 3.9% | 20 | 5.3% | 30 | 7.6% | 20 | 7.3% | 20 | 5.8% | ~ |
| | Voluntary Outflow | 10 | 1.8% | 10 | 1.8% | 10 | 2.6% | 10 | 4.1% | 10 | 2.6% | ~ |
| | Other Wastage | ~ | 0.3% | ~ | 1.5% | ~ | 1.2% | - | 0.0% | ~ | 0.6% | ~ |
| | Time Expiry | 10 | 1.8% | ~ | 1.5% | 10 | 3.2% | 10 | 2.9% | 10 | 2.3% | ~ |
| | Promotion to Officer | - | 0.0% | ~ | 0.6% | ~ | 0.6% | ~ | 0.3% | ~ | 0.3% | ~ |
| | Redundancy | - | 0.0% | - | 0.0% | - | 0.0% | - | 0.0% | - | 0.0% | ~ |
| | | | | | | | | | | | | |
| Career | Total | - | N/A | - | N/A | - | N/A | - | N/A | - | N/A | - |
| | Voluntary Outflow | - | N/A | - | N/A | - | N/A | - | N/A | - | N/A | ~ |
| | Other Wastage | - | N/A | - | N/A | - | N/A | - | N/A | - | N/A | ~ |
| | Time Expiry | - | N/A | - | N/A | - | N/A | - | N/A | - | N/A | ~ |
| | Promotion to Officer | - | N/A | - | N/A | - | N/A | - | N/A | - | N/A | ~ |
| | Redundancy | - | N/A | - | N/A | - | N/A | - | N/A | - | N/A | ~ |
| | | | | | | | | | | | | |

* Total Figures in this table may deviate from those found in the UK Armed Forces Monthly Personnel Statistics. Please see the front pages for a comment on this.

Feb-16 Edition.

| | 2011/2012 | | 2012/2013 | | 2013/2014 | | 2014/2015 | | 12 Months to 1st Feb 16 | | Actual |
|------------------------------|------------|-------------|------------|-------------|------------|-------------|------------|-------------|-------------------------|-------------|-----------|
| | Nos. | % | Nos. | % | Nos. | % | Nos. | % | Nos. | % | Jan 16 |
| Total Officers | 200 | 3.1% | 240 | 3.7% | 260 | 4.3% | 250 | 4.2% | 270 | 4.6% | 20 |
| Royal Navy Officers | | | | | | | | | | | |
| Total | 180 | 3.2% | 200 | 3.7% | 230 | 4.3% | 230 | 4.4% | 240 | 4.7% | 20 |
| OF9 | - | - | - | - | - | - | - | - | - | - | - |
| OF8 | - | - | - | - | - | - | - | - | - | - | - |
| OF7 | - | - | - | - | - | - | - | - | ~ | 3.6% | - |
| OF6 | 10 | 10.1% | 10 | 10.2% | 10 | 13.9% | 10 | 9.1% | ~ | 2.9% | ~ |
| OF5 | 10 | 5.5% | 10 | 5.3% | 20 | 6.4% | 20 | 8.1% | 20 | 6.9% | ~ |
| OF4 | 30 | 3.4% | 40 | 4.3% | 40 | 4.8% | 50 | 5.2% | 50 | 5.3% | ~ |
| OF3 | 70 | 3.7% | 70 | 3.9% | 80 | 4.3% | 80 | 4.4% | 80 | 4.7% | 10 |
| OF2 | 50 | 2.3% | 70 | 3.1% | 80 | 3.7% | 80 | 3.7% | 90 | 4.4% | ~ |
| OF1 | ~ | 1.1% | - | - | - | - | ~ | 1.0% | - | - | - |
| Royal Marine Officers | | | | | | | | | | | |
| Total | 20 | 3.0% | 30 | 4.1% | 40 | 5.0% | 20 | 2.9% | 30 | 4.5% | ~ |
| OF9 | - | - | - | - | - | - | - | - | - | - | - |
| OF8 | - | - | - | - | - | - | - | - | - | - | - |
| OF7 | - | - | - | - | - | - | - | - | - | - | - |
| OF6 | - | - | ~ | 27.3% | - | - | ~ | 7.7% | ~ | 14.9% | - |
| OF5 | - | - | - | - | ~ | 5.8% | ~ | 9.8% | ~ | 9.4% | - |
| OF4 | ~ | 4.1% | 10 | 5.1% | 10 | 7.0% | - | - | ~ | 4.0% | - |
| OF3 | 10 | 3.3% | 10 | 3.9% | 10 | 4.7% | ~ | 1.7% | 10 | 3.9% | - |
| OF2 | 10 | 3.3% | 10 | 4.3% | 20 | 5.2% | 10 | 4.9% | 20 | 5.7% | ~ |
| OF1 | - | - | - | - | - | - | - | - | - | - | - |

* Total Figures in this table may deviate from those found in the UK Armed Forces Monthly Personnel Statistics. Please see the front pages for a comment on this.

Feb-16 Edition.

| | 2011/2012 | | 2012/2013 | | 2013/2014 | | 2014/2015 | | 12 Months to 1st Feb 16 | | Actual Jan 16 |
|--------------------------------------|--------------|-------------|--------------|-------------|--------------|--------------|--------------|-------------|-------------------------|-------------|------------------|
| | Nos. | % | Nos. | % | Nos. | % | Nos. | % | Nos. | % | |
| Total Ratings | 1,250 | 4.5% | 1,610 | 6.2% | 1,420 | 5.8% | 1,490 | 6.2% | 1,280 | 5.4% | 110 |
| Warfare (General Service) | | | | | | | | | | | |
| Total | 260 | 4.9% | 320 | 6.6% | 300 | 6.6% | 310 | 7.0% | 240 | 5.8% | 20 |
| OR9 | 10 | 4.8% | 10 | 8.8% | ~ | 3.3% | 10 | 6.2% | 10 | 7.1% | - |
| OR8 | ~ | 10.6% | ~ | 13.4% | ~ | 9.3% | ~ | 16.1% | ~ | 28.9% | - |
| OR7 | 30 | 4.6% | 40 | 6.4% | 20 | 4.2% | 20 | 4.1% | 30 | 4.9% | - |
| OR6 | 20 | 1.8% | 40 | 4.4% | 30 | 3.5% | 20 | 3.3% | 30 | 3.8% | ~ |
| OR4 | 30 | 2.2% | 60 | 4.4% | 60 | 5.2% | 70 | 5.7% | 60 | 5.4% | ~ |
| OR2 | 180 | 7.7% | 180 | 8.7% | 180 | 9.8% | 180 | 10.3% | 120 | 7.1% | 10 |
| Warfare (Submarine) | | | | | | | | | | | |
| Total | 30 | 3.7% | 30 | 4.0% | 30 | 4.0% | 40 | 4.5% | 30 | 4.1% | - |
| OR9 | ~ | 5.0% | ~ | 11.5% | ~ | 3.1% | - | - | ~ | 3.1% | - |
| OR8 | - | - | - | - | - | - | - | - | - | - | - |
| OR7 | ~ | 2.9% | ~ | 2.9% | 10 | 7.2% | ~ | 4.2% | ~ | 3.6% | - |
| OR6 | ~ | 3.3% | ~ | 1.6% | ~ | 3.4% | ~ | 0.9% | - | - | - |
| OR4 | ~ | 2.7% | ~ | 2.3% | ~ | 0.6% | ~ | 1.8% | - | - | - |
| OR2 | 20 | 4.4% | 20 | 5.2% | 20 | 4.9% | 30 | 7.4% | 20 | 7.3% | - |
| Warfare (Air) | | | | | | | | | | | |
| Total | 30 | 3.5% | 20 | 2.6% | 40 | 5.0% | 40 | 5.3% | 30 | 5.1% | ~ |
| OR9 | ~ | 2.8% | ~ | 3.1% | ~ | 13.7% | 10 | 21.9% | ~ | 17.0% | - |
| OR8 | - | - | - | - | - | - | - | - | - | - | - |
| OR7 | 10 | 7.7% | ~ | 5.7% | ~ | 6.2% | 10 | 10.0% | ~ | 6.5% | - |
| OR6 | ~ | 3.1% | ~ | 1.9% | 10 | 5.3% | ~ | 3.4% | ~ | 1.4% | - |
| OR4 | 10 | 2.4% | ~ | 1.7% | 10 | 3.7% | ~ | 2.5% | 10 | 5.7% | ~ |
| OR3 | - | - | - | - | - | - | - | - | - | - | - |
| OR2 | 10 | 3.5% | 10 | 2.9% | 10 | 4.5% | 10 | 5.4% | 10 | 5.2% | ~ |
| Engineering (General Service) | | | | | | | | | | | |
| Total | 240 | 5.0% | 310 | 7.3% | 430 | 10.9% | 330 | 9.0% | 240 | 6.2% | 20 |
| OR9 | 10 | 5.6% | 20 | 12.3% | 10 | 6.7% | 10 | 5.6% | 10 | 3.4% | - |
| OR8 | 20 | 6.9% | 30 | 12.8% | 40 | 15.4% | 10 | 15.3% | 10 | 18.6% | ~ |
| OR7 | 40 | 3.9% | 50 | 5.5% | 70 | 9.0% | 50 | 7.2% | 40 | 5.8% | - |
| OR6 | 40 | 4.3% | 50 | 7.0% | 70 | 11.0% | 50 | 9.7% | 20 | 3.6% | ~ |
| OR4 | 20 | 2.7% | 50 | 5.6% | 80 | 9.3% | 70 | 9.2% | 60 | 7.1% | ~ |
| OR2 | 110 | 6.9% | 120 | 8.0% | 170 | 12.7% | 120 | 9.7% | 100 | 7.2% | 10 |
| Engineering (Submarine) | | | | | | | | | | | |
| Total | 60 | 2.7% | 110 | 5.2% | 120 | 5.9% | 140 | 7.1% | 120 | 5.9% | ~ |
| OR9 | ~ | 5.9% | ~ | 4.8% | ~ | 1.7% | ~ | 1.4% | ~ | 1.2% | - |
| OR8 | ~ | 1.6% | 10 | 4.0% | ~ | 1.2% | 10 | 6.1% | ~ | 1.4% | - |
| OR7 | 10 | 2.5% | 30 | 6.0% | 40 | 7.9% | 30 | 8.7% | 20 | 6.1% | ~ |
| OR6 | 20 | 4.1% | 30 | 9.0% | 30 | 11.9% | 30 | 11.0% | 20 | 5.9% | - |
| OR4 | 10 | 1.8% | 20 | 5.3% | 20 | 5.8% | 40 | 10.7% | 40 | 9.2% | ~ |
| OR2 | 20 | 2.4% | 20 | 2.9% | 20 | 3.8% | 30 | 3.7% | 40 | 5.1% | - |
| Engineering (Air) | | | | | | | | | | | |
| Total | 100 | 2.7% | 110 | 3.3% | 120 | 4.0% | 170 | 5.7% | 180 | 6.3% | 20 |
| OR9 | ~ | 7.0% | ~ | 5.5% | ~ | 7.2% | ~ | 3.9% | ~ | 4.3% | - |
| OR8 | ~ | 5.9% | ~ | 2.0% | ~ | 5.4% | ~ | 2.8% | - | - | - |
| OR7 | 20 | 3.2% | 20 | 3.5% | 20 | 3.9% | 30 | 6.5% | 20 | 5.0% | ~ |
| OR6 | 20 | 2.1% | 20 | 3.0% | 30 | 4.0% | 30 | 4.5% | 30 | 4.6% | - |
| OR4 | 10 | 1.3% | 20 | 3.1% | 10 | 1.7% | 30 | 3.3% | 30 | 4.3% | - |
| OR2 | 50 | 3.3% | 40 | 3.6% | 60 | 5.6% | 80 | 8.1% | 100 | 9.7% | 10 |

* Total Figures in this table may deviate from those found in the UK Armed Forces Monthly Personnel Statistics. Please see the front pages for a comment on this.

| | 2011/2012 | | 2012/2013 | | 2013/2014 | | 2014/2015 | | 12 Months to 1st Feb 16 | | Actual |
|--------------------------------------|------------|-------------|------------|-------------|------------|-------------|------------|-------------|-------------------------|-------------|-----------|
| | Nos. | % | Nos. | % | Nos. | % | Nos. | % | Nos. | % | Jan 16 |
| Logistics | | | | | | | | | | | |
| Total | 110 | 3.7% | 110 | 3.9% | 110 | 4.3% | 110 | 4.4% | 110 | 4.2% | 10 |
| OR9 | ~ | 5.6% | ~ | 6.5% | ~ | 8.7% | ~ | 1.6% | ~ | 8.0% | ~ |
| OR8 | - | - | - | - | - | - | - | - | - | - | - |
| OR7 | 10 | 5.6% | 10 | 4.1% | 10 | 5.5% | ~ | 2.2% | 10 | 3.5% | - |
| OR6 | 10 | 2.6% | 10 | 2.1% | 10 | 3.5% | 10 | 2.0% | 10 | 1.7% | - |
| OR4 | 20 | 2.4% | 30 | 3.4% | 20 | 3.2% | 30 | 4.5% | 20 | 2.6% | ~ |
| OR3 | - | - | - | - | - | - | - | - | ~ | 14.9% | - |
| OR2 | 60 | 4.4% | 60 | 4.5% | 60 | 4.9% | 60 | 5.7% | 70 | 6.1% | 10 |
| Medical | | | | | | | | | | | |
| Total | 40 | 4.2% | 50 | 5.1% | 40 | 4.8% | 40 | 4.4% | 40 | 4.6% | ~ |
| OR9 | ~ | 11.4% | ~ | 11.2% | ~ | 11.1% | ~ | 3.6% | ~ | 6.8% | - |
| OR8 | - | - | - | - | - | - | - | - | - | - | - |
| OR7 | ~ | 2.4% | ~ | 3.3% | ~ | 4.3% | 10 | 5.1% | ~ | 4.2% | ~ |
| OR6 | ~ | 1.6% | ~ | 2.8% | ~ | 1.7% | 10 | 4.7% | 10 | 4.9% | - |
| OR4 | 20 | 5.0% | 20 | 5.6% | 20 | 7.2% | 10 | 4.3% | 10 | 2.9% | - |
| OR3 | ~ | 11.0% | - | - | - | - | - | - | - | - | - |
| OR2 | 20 | 4.8% | 20 | 6.4% | 10 | 4.1% | 10 | 4.3% | 20 | 6.0% | ~ |
| Royal Marines General Service | | | | | | | | | | | |
| Total | 370 | 6.1% | 540 | 9.5% | 220 | 3.9% | 310 | 5.4% | 280 | 4.9% | 30 |
| OR9 | ~ | 5.3% | 10 | 10.2% | ~ | 1.2% | ~ | 3.5% | ~ | 2.4% | - |
| OR8 | 10 | 3.5% | 10 | 4.0% | 10 | 3.9% | ~ | 1.3% | 10 | 2.6% | - |
| OR7 | 10 | 2.1% | 20 | 3.9% | 10 | 1.9% | 10 | 1.6% | ~ | 1.4% | ~ |
| OR6 | 10 | 1.9% | 30 | 5.3% | 10 | 1.1% | ~ | 0.7% | 10 | 1.6% | - |
| OR4 | 90 | 7.4% | 140 | 12.7% | 30 | 2.5% | 30 | 2.8% | 40 | 3.3% | ~ |
| OR3 | 30 | 4.8% | 20 | 3.0% | 20 | 2.6% | 20 | 3.5% | 20 | 3.4% | ~ |
| OR2 | 220 | 7.1% | 330 | 11.8% | 160 | 5.6% | 240 | 8.5% | 200 | 7.3% | 20 |
| Royal Marines Band Service | | | | | | | | | | | |
| Total | 10 | 1.8% | 10 | 1.8% | 10 | 2.6% | 10 | 4.1% | 10 | 2.6% | - |
| OR9 | - | - | - | - | - | - | - | - | - | - | - |
| OR8 | - | - | - | - | - | - | ~ | 8.2% | - | - | - |
| OR7 | - | - | - | - | - | - | ~ | 3.2% | - | - | - |
| OR6 | - | - | - | - | ~ | 3.9% | ~ | 2.1% | ~ | 2.0% | - |
| OR4 | ~ | 1.7% | - | - | ~ | 1.7% | - | - | ~ | 1.6% | - |
| OR3 | - | - | - | - | - | - | - | - | - | - | - |
| OR2 | ~ | 2.8% | 10 | 3.3% | 10 | 3.3% | 10 | 5.9% | 10 | 3.8% | - |

* Total Figures in this table may deviate from those found in the UK Armed Forces Monthly Personnel Statistics. Please see the front pages for a comment on this.

| 11a Trained Regular Royal Navy and Royal Marine Officer Promotions to Substantive Rank | | | | | |
|--|------------|------------|------------|------------|-------------------------|
| | 2011/2012 | 2012/2013 | 2013/2014 | 2014/2015 | 12 Months to 1st Feb 16 |
| Total Officers | 480 | 490 | 510 | 560 | 580 |
| OF7 and Above | 20 | 10 | 10 | 10 | 10 |
| OF6 | 20 | 20 | 20 | 30 | 10 |
| OF5 | 40 | 30 | 50 | 70 | 50 |
| OF4 | 100 | 100 | 90 | 110 | 130 |
| OF3 | 180 | 210 | 220 | 240 | 290 |
| OF2 | 110 | 120 | 120 | 100 | 80 |
| OF1 | N/A | N/A | N/A | N/A | N/A |

| 11b Trained Regular Royal Navy and Royal Marine Rating and Other Rank Promotions to Substantive Rank | | | | | |
|--|--------------|--------------|--------------|--------------|-------------------------|
| | 2011/2012 | 2012/2013 | 2013/2014 | 2014/2015 | 12 Months to 1st Feb 16 |
| Total Ratings | 1,880 | 1,530 | 2,660 | 1,990 | 2,400 |
| OR9 | 70 | 30 | 110 | 80 | 230 |
| OR8 | 110 | 30 | 150 | 100 | 130 |
| OR7 | 360 | 300 | 420 | 360 | 380 |
| OR6 | 550 | 410 | 740 | 560 | 650 |
| OR4 | 800 | 760 | 1,220 | 900 | 1,010 |
| OR3 | ~ | ~ | - | - | - |

Feb-16 Edition.

12a Gains to the Trained Regular Royal Navy and Royal Marines Officer Strength from Untrained by Branch

| | | 2011/2012 | 2012/2013 | 2013/2014 | 2014/2015 | 12 Months to 1st Feb 16 |
|----------------------|-------------------------------|------------|------------|------------|------------|-------------------------|
| Royal Navy | Officers | | | | | |
| | Total | 290 | 290 | 240 | 280 | 250 |
| Royal Marines | Officers | | | | | |
| | Total | 40 | 50 | 50 | 60 | 60 |
| | Warfare | 160 | 140 | 110 | 140 | 120 |
| | Engineer | 70 | 100 | 80 | 100 | 70 |
| | Logistics | 30 | 20 | 20 | 30 | 20 |
| | Medical | 30 | 20 | 20 | 20 | 40 |
| | Chaplain | - | - | - | - | - |
| | Other | - | - | - | - | - |
| | Royal Marines General Service | 40 | 50 | 50 | 60 | 60 |
| | Royal Marines Band Service | - | - | - | - | - |

| | | Feb-15 | Mar-15 | Apr-15 | May-15 | Jun-15 | Jul-15 | Aug-15 | Sep-15 | Oct-15 | Nov-15 | Dec-15 | Jan-16 |
|----------------------|-------------------------------|-----------|-----------|-----------|-----------|-----------|----------|-----------|-----------|-----------|----------|-----------|-----------|
| Royal Navy | Officers | | | | | | | | | | | | |
| | Total | 10 | 40 | 10 | 30 | 30 | - | 30 | 20 | 40 | - | 30 | 20 |
| Royal Marines | Officers | | | | | | | | | | | | |
| | Total | 20 | - | - | - | - | - | - | - | - | - | 40 | - |
| | Warfare | - | 30 | - | 10 | 10 | - | 10 | - | 30 | - | 20 | - |
| | Engineer | - | 10 | - | 10 | - | - | 10 | 10 | - | - | 10 | 20 |
| | Logistics | - | - | - | 10 | 10 | - | - | 10 | - | - | - | - |
| | Medical | - | - | 10 | - | 10 | - | - | - | - | - | - | - |
| | Chaplain | - | - | - | - | - | - | - | - | - | - | - | - |
| | Other | - | - | - | - | - | - | - | - | - | - | - | - |
| | Royal Marines General Service | 20 | - | - | - | - | - | - | - | - | - | 40 | - |
| | Royal Marines Band Service | - | - | - | - | - | - | - | - | - | - | - | - |

Feb-16 Edition.

12b Gains to the Trained Regular Royal Navy and Royal Marine Rating Strength from Untrained

| | | 2011/2012 | 2012/2013 | 2013/2014 | 2014/2015 | 12 Months to 1st Feb 16 |
|---------------------------------|---|------------|------------|--------------|--------------|-------------------------|
| Royal Navy | Ratings | | | | | |
| | Total | 910 | 980 | 1,230 | 1,580 | 1,530 |
| Royal Marines | Other Ranks | | | | | |
| | Total | 530 | 540 | 650 | 520 | 390 |
| Warfare | Total | 240 | 270 | 310 | 450 | 420 |
| (General Service) | Warfare Specialist (WS) | 70 | 120 | 120 | 160 | 160 |
| | WS (Above Water Tactical) | ~ | - | - | - | ~ |
| | WS (Above Water Warfare) | - | - | - | - | - |
| | WS (Electronic Warfare) | - | - | - | - | - |
| | WS (Under Water) | - | - | - | - | ~ |
| | Comms Info Systems Specialist | 40 | 40 | 40 | 80 | 30 |
| | Hydrographic/Meteorological (H/M) | 10 | 20 | 20 | 20 | 20 |
| | H/M (Hydrographic) | - | - | - | - | - |
| | H/M (Meteorological) | - | ~ | - | - | - |
| | Mine Warfare | 20 | 40 | 50 | 50 | 40 |
| | Diver | 20 | 20 | 30 | 30 | 30 |
| | Seaman Specialist | 60 | 20 | 40 | 100 | 110 |
| | Naval Airman (Photographer) | - | - | - | - | - |
| | Physical Training Instructor | ~ | - | - | - | - |
| | Royal Navy Police | - | - | - | - | - |
| | Communications Technician | 10 | 10 | 10 | 10 | 20 |
| | Unspecified | - | - | - | - | - |
| Warfare | Total | 40 | 40 | 50 | 80 | 70 |
| (Submarine) | Coxswain (Submarines) | - | - | - | - | - |
| | Warfare Specialist (Sensors Submarines) | 20 | 20 | 30 | 40 | 30 |
| | Warfare Specialist (Tactical Submarines) | - | 10 | 10 | 20 | 40 |
| | Comms Info Systems Spec (Submarines) | 20 | 10 | 10 | 20 | 10 |
| | Unspecified | - | - | - | - | - |
| Warfare (Air) | Total | 20 | 20 | 30 | 70 | 70 |
| | Aircrewman | - | - | ~ | - | - |
| | Naval Airman (Aircraft Control) | 10 | 10 | ~ | 10 | 20 |
| | Naval Airman (Aircraft Handler) | 20 | 10 | 30 | 60 | 50 |
| | Royal Marines Aircrewman | - | - | - | - | - |
| | Unspecified | - | - | - | - | - |
| Engineering | Total | 160 | 210 | 310 | 350 | 390 |
| (General Service) | Marine Engineer Mechanic | - | - | - | - | - |
| | Weapon Engineer Mechanic | - | - | - | - | - |
| | Engineer Technician (Marine Engineer) | 90 | 150 | 200 | 190 | 200 |
| | Engineer Technician (Weapon Engineer) | 70 | 60 | 120 | 160 | 190 |
| | Unspecified | - | - | - | - | - |
| Engineering | Total | 130 | 130 | 150 | 190 | 130 |
| (Submarine) | Marine Engineer Mechanic | - | - | - | - | - |
| | Weapon Engineer Mechanic | - | - | - | - | - |
| | Engineer Technician (Marine Engineer Sub) | 60 | 90 | 90 | 110 | 60 |
| | Engineer Tech (Weapon Engineer Sub) | 70 | 40 | 70 | 80 | 70 |
| Engineering (Air) | Total | 190 | 100 | 190 | 200 | 210 |
| | Air Engineer Artificer | - | - | - | - | - |
| | Air Engineer Mechanic | - | - | - | - | - |
| | Air Engineer Technician | 180 | 100 | 180 | 190 | 200 |
| | Naval Airman (Survival Equipment) | ~ | - | 10 | 10 | 20 |
| | Unspecified | - | - | - | - | - |
| Logistics | Total | 90 | 140 | 120 | 180 | 180 |
| | Caterer | - | - | - | - | - |
| | Chef | 40 | 40 | 50 | 90 | 60 |
| | Steward | 10 | 20 | 30 | 10 | 10 |
| | Supply Chain | 10 | 30 | 30 | 40 | 50 |
| | Writer | 30 | 50 | 20 | 30 | 50 |
| | Family Service | - | - | - | - | - |
| | Unspecified | - | - | - | - | - |
| Medical | Total | 50 | 60 | 60 | 60 | 60 |
| | Dental Hygienist | - | - | - | - | - |
| | Dental Surgery Assistant | ~ | ~ | ~ | ~ | ~ |
| | Medical Assistant | 40 | 40 | 50 | 40 | 40 |
| | Naval Nurse | 10 | 10 | ~ | 20 | 10 |
| | Medical Technician | - | ~ | ~ | - | ~ |
| | Royal Marines Medical Assistant | - | - | - | - | - |
| | Unspecified | - | - | - | - | - |
| RM General Service Total | | 510 | 520 | 630 | 490 | 370 |
| RM Band Service | Total | 20 | 20 | 20 | 30 | 20 |
| | Band | 20 | 20 | 20 | 30 | 10 |
| | Bugler | ~ | ~ | 10 | ~ | ~ |

12b Gains to the Trained Regular Royal Navy and Royal Marines Rating Strength from Untrained by Branch and Specialisation (Cont)

| | | Feb-15 | Mar-15 | Apr-15 | May-15 | Jun-15 | Jul-15 | Aug-15 | Sep-15 | Oct-15 | Nov-15 | Dec-15 | Jan-16 |
|--|---|------------|------------|-----------|------------|------------|------------|-----------|------------|------------|------------|------------|------------|
| Royal Navy | Ratings | | | | | | | | | | | | |
| | Total | 120 | 200 | 20 | 140 | 160 | 200 | 10 | 140 | 200 | 130 | 120 | 100 |
| Royal Marines | Other Ranks | | | | | | | | | | | | |
| | Total | 30 | 30 | 20 | 50 | 50 | 40 | 40 | 30 | 40 | 20 | 20 | 20 |
| Warfare (General Service) | Total | 40 | 70 | ~ | 40 | 50 | 50 | 10 | 30 | 30 | 50 | 30 | 20 |
| | Warfare Specialist (WS) | 10 | 20 | ~ | 10 | 20 | 30 | - | 10 | 10 | 10 | 10 | 10 |
| | WS (Above Water Tactical) | - | - | - | - | - | - | - | - | - | - | - | ~ |
| | WS (Above Water Warfare) | - | - | - | - | - | - | - | - | - | - | - | - |
| | WS (Under Water) | - | - | - | - | - | - | - | - | - | - | - | - |
| | WS (Electronic Warfare) | - | - | - | - | - | - | - | - | ~ | - | - | - |
| | Comms Info Systems Specialist | - | 10 | ~ | 10 | ~ | - | - | - | - | - | - | - |
| | Hydrographic/Meteorological (H/M) | ~ | 10 | - | - | 10 | 10 | - | - | - | - | - | ~ |
| | H/M (Hydrographic) | - | - | - | - | - | - | - | - | - | - | - | - |
| | H/M (Meteorological) | - | - | - | - | - | - | - | - | - | - | - | - |
| | Mine Warfare | - | 10 | - | - | 10 | - | - | - | ~ | 10 | 10 | - |
| | Diver | 10 | - | - | - | 10 | - | 10 | - | - | 10 | - | - |
| | Seaman Specialist | 10 | 20 | - | 10 | - | 10 | - | 10 | 10 | 10 | 10 | - |
| | Naval Airman (Photographer) | - | - | - | - | - | - | - | - | - | - | - | - |
| | Physical Training Instructor | - | - | - | - | - | - | - | - | - | - | - | - |
| | Royal Navy Police | - | - | - | - | - | - | - | - | - | - | - | - |
| | Communications Technician | - | - | - | - | 10 | - | - | - | - | 10 | - | - |
| | Unspecified | - | - | - | - | - | - | - | - | - | - | - | - |
| Warfare (Submarine) | Total | 10 | 10 | - | 10 | 10 | 10 | - | ~ | 10 | - | ~ | ~ |
| | Coxswain (Submarines) | - | - | - | - | - | - | - | - | - | - | - | - |
| | Warfare Specialist (Sensors Submarines) | - | 10 | - | 10 | ~ | ~ | - | ~ | ~ | - | ~ | ~ |
| | Warfare Specialist (Tactical Submarines) | 10 | 10 | - | ~ | 10 | 10 | - | - | 10 | - | ~ | - |
| | Comms Info Sys Specialist (Submarines) | ~ | ~ | - | 10 | - | - | - | - | - | - | - | - |
| | Unspecified | - | - | - | - | - | - | - | - | - | - | - | - |
| Warfare (Air) | Total | 10 | 20 | - | - | - | 10 | - | - | - | 20 | - | 10 |
| | Aircrewman | - | - | - | - | - | - | - | - | - | - | - | - |
| | Naval Airman (Aircraft Control) | 10 | ~ | - | - | - | - | - | - | - | - | - | 10 |
| | Naval Airman (Aircraft Handler) | - | 20 | - | - | - | 10 | - | - | - | 20 | - | - |
| | Royal Marines Aircrewman | - | - | - | - | - | - | - | - | - | - | - | - |
| | Unspecified | - | - | - | - | - | - | - | - | - | - | - | - |
| Engineering (General Service) | Total | 40 | 30 | - | 50 | 30 | 60 | - | 40 | 70 | 40 | 40 | 10 |
| | Marine Engineer Mechanic | - | - | - | - | - | - | - | - | - | - | - | - |
| | Weapon Engineer Mechanic | - | - | - | - | - | - | - | - | - | - | - | - |
| | Engineer Technician (Marine Engineer) | 30 | ~ | - | 40 | ~ | 40 | - | - | 40 | 20 | 20 | - |
| | Engineer Technician (Weapon Engineer) | ~ | 20 | - | 10 | 20 | 20 | - | 40 | 30 | 20 | 10 | 10 |
| | Unspecified | - | - | - | - | - | - | - | - | - | - | - | - |
| Engineering (Submarine) | Total | 10 | ~ | ~ | 10 | 10 | 30 | - | 10 | 30 | - | 10 | 30 |
| | Marine Engineer Mechanic | - | - | - | - | - | - | - | - | - | - | - | - |
| | Weapon Engineer Mechanic | - | - | - | - | - | - | - | - | - | - | - | - |
| | Engineer Technician (Marine Engineer Sub) | - | - | - | - | - | 20 | - | ~ | 20 | - | - | 20 |
| | Engineer Tech (Weapon Engineer Sub) | 10 | ~ | ~ | 10 | 10 | 10 | - | 10 | 10 | - | 10 | 10 |
| Engineering (Air) | Total | 20 | 20 | - | 20 | 30 | 20 | - | 30 | 30 | 20 | 20 | 20 |
| | Air Engineer Artificer | - | - | - | - | - | - | - | - | - | - | - | - |
| | Air Engineer Mechanic | - | - | - | - | - | - | - | - | - | - | - | - |
| | Air Engineer Technician | 10 | 20 | - | 20 | 30 | 20 | - | 30 | 30 | 20 | 20 | 10 |
| | Naval Airman (Survival Equipment) | 10 | - | - | - | - | - | - | - | - | - | - | 10 |
| | Unspecified | - | - | - | - | - | - | - | - | - | - | - | - |
| Logistics | Total | 10 | 30 | 10 | 10 | 20 | 20 | ~ | 10 | 20 | ~ | 20 | 10 |
| | Caterer | - | - | - | - | - | - | - | - | - | - | - | - |
| | Chef | 10 | 10 | - | 10 | ~ | 10 | - | ~ | ~ | - | 10 | 10 |
| | Steward | - | - | - | - | 10 | - | - | ~ | ~ | - | ~ | - |
| | Supply Chain | ~ | 20 | 10 | ~ | ~ | ~ | ~ | 10 | 10 | - | ~ | - |
| | Writer | - | ~ | 10 | ~ | 10 | 10 | - | - | 10 | ~ | 10 | ~ |
| | Family Service | - | - | - | - | - | - | - | - | - | - | - | - |
| | Unspecified | - | - | - | - | - | - | - | - | - | - | - | - |
| Medical | Total | ~ | 10 | ~ | ~ | 10 | 10 | - | 10 | 10 | ~ | 10 | ~ |
| | Dental Hygienist | - | - | - | - | - | - | - | - | - | - | - | - |
| | Dental Surgery Assistant | - | - | - | - | - | ~ | - | - | - | - | ~ | - |
| | Medical Assistant | ~ | 10 | ~ | ~ | 10 | ~ | - | 10 | 10 | - | - | - |
| | Naval Nurse | - | - | - | ~ | - | - | - | 10 | ~ | - | ~ | ~ |
| | Medical Technician | - | - | - | - | - | - | - | - | - | ~ | - | - |
| | Royal Marines Medical Assistant | - | - | - | - | - | - | - | - | - | - | - | - |
| | Unspecified | - | - | - | - | - | - | - | - | - | - | - | - |
| RM General Service Total | | 30 | 30 | 20 | 50 | 50 | 40 | 40 | 20 | 40 | 20 | 20 | 20 |
| RM Band Service | Total | - | - | ~ | - | - | - | - | 10 | - | - | - | ~ |
| | Band | - | - | ~ | - | - | - | - | 10 | - | - | - | ~ |
| | Bugler | - | - | ~ | - | - | - | - | ~ | - | - | - | ~ |

| | 2011/2012 | 2012/2013 | 2013/2014 | 2014/2015 | 12 Months to 1st Feb 16 | Actual Jan 16 |
|-------------------------------|-----------|-----------|-----------|-----------|----------------------------|------------------|
| Total Officers | ~ | 10 | ~ | 10 | 10 | ~ |
| Warfare | ~ | ~ | ~ | ~ | ~ | - |
| Engineer | - | ~ | ~ | ~ | ~ | ~ |
| Logistics | - | ~ | - | - | - | - |
| Medical | ~ | - | ~ | - | 10 | ~ |
| Chaplain | - | - | ~ | ~ | - | - |
| Royal Marines General Service | ~ | ~ | ~ | ~ | - | - |
| Royal Marines Band Service | - | - | - | - | - | - |
| No Value | - | - | - | - | - | - |
| Total Ratings | 40 | 60 | 70 | 60 | 70 | 10 |
| Warfare (General Service) | 20 | 20 | 10 | 10 | 20 | - |
| Warfare (Submarine) | ~ | - | - | ~ | ~ | - |
| Warfare (Air) | ~ | ~ | ~ | ~ | ~ | - |
| Engineering (General Service) | ~ | ~ | 10 | ~ | 20 | ~ |
| Engineering (Submarine) | ~ | - | ~ | ~ | ~ | ~ |
| Engineering (Air) | - | ~ | 10 | ~ | ~ | ~ |
| Logistics | ~ | ~ | ~ | 10 | 10 | ~ |
| Medical | ~ | ~ | ~ | 10 | 10 | - |
| Royal Marines General Service | 10 | 20 | 30 | 10 | ~ | - |
| Royal Marines Band Service | - | ~ | ~ | - | - | - |
| No Value | - | - | - | - | ~ | - |

The figures above show trained intake to the regular strength from Civil Life, from Another Service, from LTA, To Other Ranks from Officer and To Officer from Other Ranks

Feb-16 Edition.