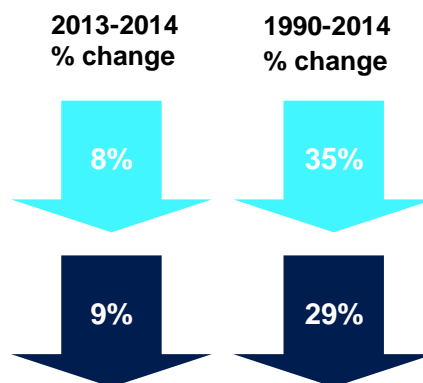
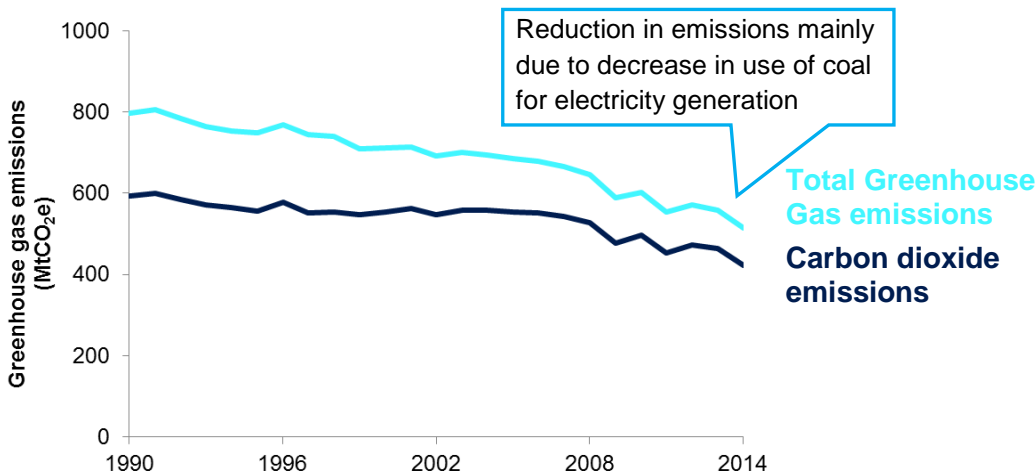
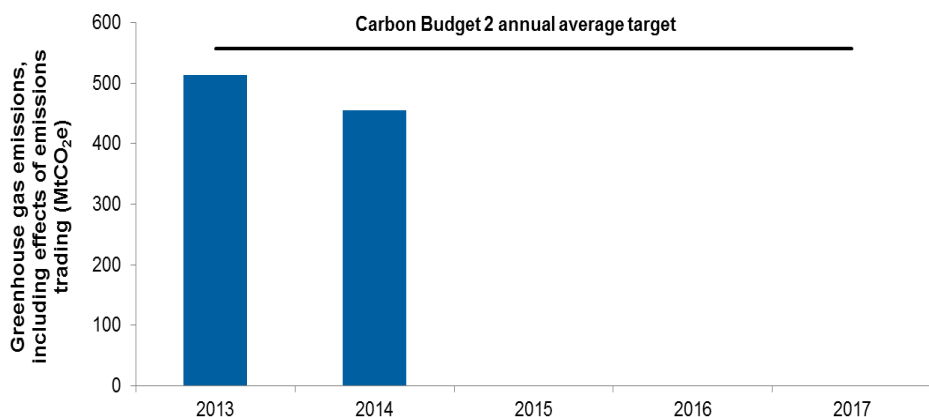


UK Greenhouse gas emissions for 2014 at record low



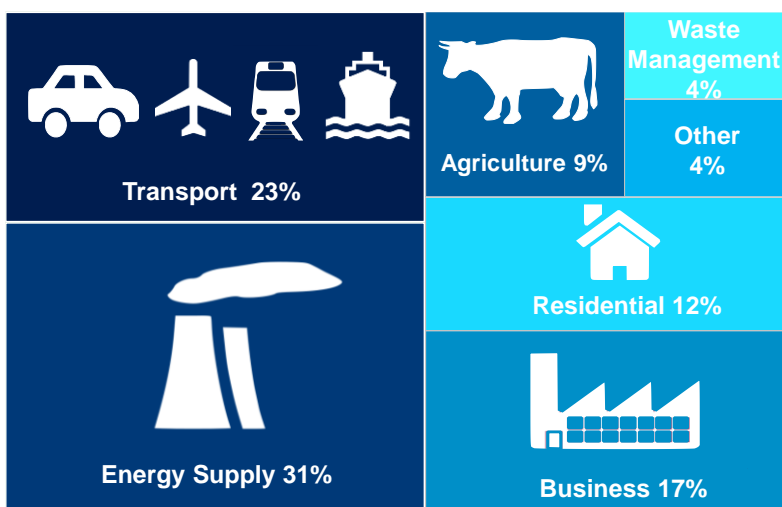
The UK is on track to meet the Second Carbon Budget



2nd Carbon Budget (2013-17) level 2,782 MtCO₂e

The second Carbon Budget figures will not be finalised until end of budgetary period reporting in 2019.

Energy Supply remains the largest emitting sector of UK 2014 Greenhouse gas emissions



Other includes Public and Industrial Process sectors (the Land Use, Land Use Change and Forestry (LULUCF) sector is excluded from the sector statistics above as it acted as a net sink of emissions)

Residential and Energy Supply sectors experienced the largest reductions in emissions from 2013 to 2014

	2013-2014 % change	1990-2014 % change
Residential	17%	20%
Energy Supply	14%	41%
Waste Management	11%	73%
Other	6%	71%
Business	3%	23%
Transport	1%	3%
Agriculture	2%	16%