



Permit with introductory note

Pollution Prevention and Control (England & Wales) Regulations 2000

Didcot A Power Station

**RWE npower plc
Didcot A Power Station
Didcot
Oxfordshire
OX11 7HA**

**Permit number
YP3030LR**

Didcot A Power Station Permit Number YP3030LR

Introductory note

This introductory note does not form a part of the permit

A non-technical description of the installation (the site) is given in the Application, but the main features of the site are as follows.

Didcot A Power Station is predominantly coal-fired, but also burns gas and biomass, produces a maximum of 2000MW of electricity and is operated by RWE npower plc. The site covers an area of 97.3 hectares centred at National Grid Reference SU 5127 9175.

It is located within a semi rural agricultural area of south Oxfordshire, interspersed with gravel extraction pits and to the south of the River Thames. Didcot B Power Station lies to the west on an adjacent site. The nearest residential areas are the villages of Sutton Courtenay, Appleford, Harwell, Milton and the town of Didcot. Immediately to the east of the site is a light industrial estate and sewage treatment works.

The site is underlain by Alluvium and River Terrace Gravels classified as minor aquifers and further underlain by impermeable Gault Clay classified as a non-aquifer.

The power station comprises:

Four predominantly coal fired boilers each of 1492.5 MW thermal input with combustion gases passing through electrostatic precipitators (EP's) before being released to air from the top of a 199m high four single flue combined windshield stack (LCP Windshield 1). Alternative fuels include biomass, propane, heavy fuel oil and natural gas.

Four gas oil fired open cycle gas turbines (OCGT's) each of 98 MW thermal input used for start-up and system support with combustion gases released to air from the top of a 101m high combined single flue stack (LCP Windshield 2).

The Power Station has opted out from the main provisions of the Large Combustion Plant Directive (LCPD) and is limited to a total of 20,000 operating hours between 1st January 2008 and 31st December 2015.

The main emissions of concern to air are:

Sulphur dioxide (SO₂) released directly as a result of the sulphur content and amount of the fuels burned.

Oxides of nitrogen (NO_x) comprising nitric oxide and nitrogen dioxide created by the chemical combination of atmospheric oxygen and nitrogen in the high temperature furnace combustion zone.

Particulate matter being residual pulverised fuel ash (PFA) not captured by the EP's.

Each substance is continuously monitored under Annex VIII of the LCPD.

The installation comprises a number of distinct operational activities supporting the combustion process and these include:

Raw materials reception and storage

Four steam turbine driven electricity generators and associated electrical substation which connects across to the National Grid.

PFA handling and storage system.

Steam turbine condensers and associated natural draught cooling towers.

Towns water purification plant supplying boiler make up water.

Water is abstracted from the River Thames to replace cooling tower evaporative and purge losses. The purge is combined with boiler water blow-down and neutralised ion exchange resin bed regeneration flushings prior to return to the River Thames.

Surface and other site drainage water is discharged via interceptors to the Moor Ditch which flows into the River Thames.

The main potential waste from the site is PFA collected by the EP's. Typically, any not sold for industrial use is slurried and pumped to Radley ash lagoons.

Within 15 km of the site there are two Special Areas of Conservation.

The site has an Environmental Management System accredited to ISO 14001: 2004 and is a participant in the EU Emissions Trading Scheme.

The site is also subject to The Control of Major Accident Hazard Regulations (SI 1999 No.743) as the quantity of hydrazine solution held on site is above the prescribed threshold.

Status Log of the permit

Detail	Date	Response Date
Application YP3030LR	Duly made 31/03/06	
Submission of additional air dispersion modelling results	05/09/06	
Submission of site plan for permit	23/11/06	
Permit determined	28/03/07	

Superseded or Partially Superseded Licences/Authorisations/Consents relating to this installation

Holder	Reference Number	Date of Issue	Fully or Partially Superseded
RWE npower (IPC Authorisation)	AA3107 as varied	08/04/93	Fully superseded

Other existing Licences/Authorisations/Registrations relating to this site

Holder	Reference Number	Date of issue
RWE npower (Water Abstraction Licence)	28/39/18/59	17/05/00

End of Introductory Note

28 March 2007



Permit

**Pollution Prevention and Control
(England and Wales) Regulations 2000**

Permit

Permit number
YP3030LR

The Environment Agency (the Agency) in exercise of its powers under Regulation 10 of the Pollution Prevention and Control (England and Wales) Regulations 2000 (SI 2000 No 1973) hereby authorises

RWE npower plc ("the operator"),

whose registered office is

**Windmill Hill Business Park
Whitehill Way
Swindon
Wiltshire
SN5 6PB**

Company registration number 3892782


to operate an installation at

**Didcot A Power Station
Didcot
Oxfordshire
OX11 7HA**

to the extent authorised by and subject to the conditions of this permit.

Signed

Date

	28 March 2007
---	---------------

P Butler

Authorised to sign on behalf of the Agency

Conditions

1 Management

1.1 General management

1.1.1 The activities shall be managed and operated:

- (a) in accordance with a management system, which identifies and minimises risks of pollution, including those arising from operations, maintenance, accidents, incidents and non-conformances and those drawn to the attention of the operator as a result of complaints; and
- (b) by sufficient persons who are competent in respect of the responsibilities to be undertaken by them in connection with the operation of the activities.

1.1.2 Records demonstrating compliance with condition 1.1.1 shall be maintained.

1.1.3 Any person having duties that are or may be affected by the matters set out in this permit shall have convenient access to a copy of it kept at or near the place where those duties are carried out.

1.2 Accident management plan

1.2.1 The operator shall:

- (a) maintain and implement an accident management plan;
- (b) review and record at least every 4 years or as soon as practicable after an accident, (whichever is the earlier) whether changes to the plan should be made;
- (c) make any appropriate changes to the plan identified by a review.

1.3 Energy efficiency

1.3.1 The operator shall:

- (a) take appropriate measures to ensure that energy is used efficiently in the activities;
- (b) review and record at least every 4 years whether there are suitable opportunities to improve the energy efficiency of the activities; and
- (c) take any further appropriate measures identified by a review.

1.4 Efficient use of raw materials

1.4.1 The operator shall:

- (a) take appropriate measures to ensure that raw materials and water are used efficiently in the activities;
- (b) maintain records of raw materials and water used in the activities;

- (c) review and record at least every 4 years whether there are suitable alternative materials that could reduce environmental impact or opportunities to improve the efficiency of raw material and water use; and
- (d) take any appropriate further measures identified by a review.

1.5 Avoidance, recovery and disposal of wastes produced by the activities

1.5.1. The operator shall:

- (a) take appropriate measures to ensure that waste produced by the activities is avoided or reduced, or where waste is produced it is recovered wherever practicable or otherwise disposed of in a manner which minimises its impact on the environment;
- (b) review and record at least every 4 years whether changes to those measures should be made; and
- (c) take any further appropriate measures identified by a review.

1.6 Site security

1.6.1. Site security measures shall prevent unauthorised access to the site, as far as practicable.

2. Operations

2.1 Permitted activities

2.1.1 The operator is authorised to carry out the activities specified in schedule 1 table S1.1 (the "activities").

2.2 The site

2.2.1 The activities shall not extend beyond the site, being the land shown edged in red on the site plan at schedule 2 to this permit.

2.3 Operating techniques

2.3.1 The activities shall, subject to the conditions of this permit, be operated using the techniques and in the manner described in the documentation specified in schedule 1 table S1.2, unless otherwise agreed in writing by the Agency.

2.3.2 No raw materials or fuels listed in schedule 3 table S3.1 shall be used unless they comply with the specifications set out in that table.

2.3.3 Waste shall only be accepted if:

- (a) it is of a type and quantity listed in schedule 3 table S3.2; and
- (b) it conforms to the description in the documentation supplied by the producer and holder.

2.3.4 Records shall be kept of all waste accepted onto the site.

- 2.3.5 The activities shall not be operated for more than 20,000 operational hours (excluding start-up and shutdown) between 1st January 2008 and 31st December 2015.
- 2.3.6 From 1st January 2008, the following conditions apply where there is a malfunction or breakdown of any abatement equipment, subject to the provisions of "A Protocol for dealing with malfunction or breakdown of abatement equipment at coal fired power stations from 1st January 2008 to 31st December 2015" dated 15 November 2006 or any subsequent revision to this protocol agreed in writing with the Agency
- 2.3.6.1 The operator shall notify the Agency within 48 hours of any such malfunction or breakdown unless notification has already been made under condition 4.3.1.
- 2.3.6.2 Unless otherwise agreed in writing by the Agency:
- (a) if a return to normal operation is not achieved within 24 hours, the operator shall reduce or close down operations, or shall operate the plant using low polluting fuels; and
 - (b) the cumulative duration of unabated operation in any twelve month period shall not exceed 120 hours.

2.4 Off-site conditions

- 2.4.1 There are no off-site conditions under this section.

2.5 Improvement programme

- 2.5.1 The operator shall complete the improvements specified in schedule 1 table S1.3 by the date specified in that table unless otherwise agreed in writing by the Agency.
- 2.5.2 Except in the case of an improvement which consists only of a submission to the Agency, the operator shall notify the Agency within 14 days of completion of each improvement.

2.6 Pre-operational conditions

- 2.6.1 There are no pre-operational conditions in this permit.

2.7 Closure and decommissioning

- 2.7.1 The operator shall maintain and operate the activities so as to prevent or where that is not practicable, to minimise, any pollution risk on closure and decommissioning.
- 2.7.2 The operator shall maintain a site closure plan which demonstrates how the activities can be decommissioned to avoid any pollution risk and return the site to a satisfactory state.
- 2.7.3 The operator shall carry out and record a review of the site closure plan at least every 4 years.
- 2.7.4 The site closure plan (or relevant part thereof) shall be implemented on final cessation or decommissioning of the activities or part thereof.

2.8 Site protection and monitoring programme

- 2.8.1 The operator shall, within 2 months of the issue of this permit, submit a site protection and monitoring programme.

- 2.8.2 The operator shall implement and maintain the site protection and monitoring programme and shall carry out and record a review of it at least every 4 years.

3. Emissions and monitoring

3.1 Emissions to water, air or land

- 3.1.1 There shall be no point source emissions to water; air or land except from the sources and emission points listed in schedule 4 tables S4.1, S4.2 and S4.3.
- 3.1.2 The limits given in schedule 4 shall not be exceeded except where otherwise stated in the conditions of this permit.

3.2 Transfers off-site

- 3.2.1 Records of all the wastes sent off site from the activities, for either disposal or recovery, shall be maintained.

3.3 Fugitive emissions of substances

- 3.3.1 Fugitive emissions of substances (excluding odour, noise and vibration) shall not cause pollution. The operator shall not be taken to have breached this condition if appropriate measures, including those specified in schedule 1 table S1.4, have been taken to prevent or where that is not practicable, to minimise, those emissions
- 3.3.2 All liquids, whose emission to water or land could cause pollution, shall be provided with secondary containment, unless the operator has used other appropriate measures to prevent or where that is not practicable, to minimise, leakage and spillage from the primary container.

3.4 Odour

- 3.4.1 Emissions from the activities shall be free from odour at levels likely to cause annoyance outside the site, as perceived by an authorised officer of the Agency, unless the operator has used appropriate measures to prevent or where that is not practicable to minimise the odour.

3.5 Noise and vibration

- 3.5.1 Emissions from the activities shall be free from noise and vibration at levels likely to cause annoyance outside the site, as perceived by an authorised officer of the Agency, unless the operator has used appropriate measures, including those specified in schedule 1 table S1.5, to prevent or where that is not practicable to minimise the noise and vibration.

3.6 Monitoring

- 3.6.1 The operator shall, unless otherwise agreed in writing by the Agency, undertake the monitoring specified in the following tables in schedule 4 to this permit:
- (a) point source emissions specified in tables S4.1, S4.2 and S4.3;
 - (b) annual limits specified in table S4.4; and

(c) process monitoring specified in table S4.5.

- 3.6.2 The operator shall maintain records of all monitoring required by this permit including records of the taking and analysis of samples, instrument measurements (periodic and continual), calibrations, examinations, tests and surveys and any assessment or evaluation made on the basis of such data.
- 3.6.3 Monitoring equipment, techniques, personnel and organisations employed for the emissions monitoring programme specified in condition 3.6.1 shall have either MCERTS certification or MCERTS accreditation (as appropriate) unless otherwise agreed in writing by the Agency.
- 3.6.4 Permanent means of access shall be provided to enable sampling/monitoring to be carried out in relation to the emission points specified in schedule 4 tables S4.1, S4.2 and S4.3 unless otherwise specified in that schedule.
- 3.6.5 Within 6 months of the issue of this permit (unless otherwise agreed in writing by the Agency) the site reference data identified in the site protection and monitoring programme shall be collected and submitted to the Agency.

3.7 Monitoring for the purposes of the Large Combustion Plant Directive

- 3.7.1 All monitoring required by this permit shall be carried out in accordance with the provisions of Annex VIII of the Large Combustion Plant Directive.
- 3.7.2 If the monitoring results for more than 10 days a year are invalidated within the meaning set out in Schedule 4, the Operator shall:
- (a) within 28 days of becoming aware of this fact, review the causes of the invalidations and submit to the Agency for approval, proposals for measures to improve the reliability of the continuous measurement systems, including a timetable for the implementation of those measures; and
 - (b) implement the approved measures.
- 3.7.3 Continuous measurement systems on release points from the LCP shall be subject to quality control by means of parallel measurements with reference methods at least once every calendar year.
- 3.7.4 Unless otherwise agreed in writing by the Agency in accordance with condition 3.7.5 below, the Operator shall carry out the methods, including the reference measurement methods, to use and calibrate continuous measurement systems in accordance with the appropriate CEN standards.
- 3.7.5 If CEN standards are not available, ISO standards, national or international standards which will ensure the provision of data of an equivalent scientific quality shall be used, as agreed in writing with the Agency.
- 3.7.6 Where required by a condition of this permit to check the measurement equipment, the operator shall submit a report to the Agency in writing, within 28 days of the completion of the check.

3.8 Air Quality Management Plan

3.8.1 The emissions from the activities shall not result in exceedance of EU air quality standards or contribute significantly to a failure to meet national air quality standards for sulphur dioxide, oxides of nitrogen and particulate matter (PM₁₀).

3.8.2 The activities shall be operated in accordance with the Air Quality Management Plan dated June 2001 (or any subsequent revision to this plan agreed in writing with the Agency), except that the following methodologies (including any subsequent revisions to the methodologies agreed in writing with the Agency) will be used:

- (a) Methodology for the Use and Interpretation of Monitoring and Modelling for AQS Management Plans (Issue 5, January 2002)
- (b) Technical Methodology for Dispersion Modelling Related to Power Station AQS Management Plans (Issue 4, January 2003)
- (c) Monitoring To Assess Power Station Compliance With AQS Objectives Technical Methodology (Issue 6, March 2003)
- (d) Generic Methodology for Compiling Station Hourly Emission Datasets from Generation Data (Issue 4, January 2003).

4. Information

4.1 Records

4.1.1 All records required to be made by this permit shall:

- (a) be legible;
- (b) be made as soon as reasonably practicable;
- (c) if amended, be amended in such a way that the original and any subsequent amendments remain legible, or are capable of retrieval; and
- (d) be retained, unless otherwise agreed in writing by the Agency, for at least 6 years from the date when the records were made, or in the case of the following records until permit surrender:
 - (i) the site protection and monitoring programme.

4.1.2 Any records required to be made by this permit shall be supplied to the Agency within 14 days where the records have been requested in writing by the Agency.

4.1.3 All records required to be held by this permit shall be held on the installation and shall be available for inspection by the Agency at any reasonable time.

4.2 Reporting

- 4.2.1 A report or reports on the performance of the activities over the previous year shall be submitted to the Agency by 31 January (or other date agreed in writing by the Agency) each year. The report(s) shall include as a minimum:
- (a) a review of the results of the monitoring and assessment carried out in accordance with this permit against the relevant assumptions, parameters and results in the assessment of the impact of the emissions submitted with the application;
 - (b) where the operator's management system encompasses annual improvement targets, a summary report of the previous year's progress against such targets;
 - (c) the annual production /treatment data set out in schedule 5 table S5.2;
 - (d) the performance parameters set out in schedule 5 table S5.3 using the forms specified in table S5.4 of that schedule; and
 - (e) details of any contamination or decontamination of the site which has occurred.
- 4.2.2 Within 28 days of the end of the reporting period the operator shall, unless otherwise agreed in writing by the Agency, submit reports of the monitoring and assessment carried out in accordance with the conditions of this permit, as follows:
- (a) in respect of the parameters and emission points specified in schedule 5 table S5.1;
 - (b) for the reporting periods specified in schedule 5 table S5.1 and using the forms specified in schedule 5 table S5.4 ; and
 - (c) giving the information from such results and assessments as may be required by the forms specified in those tables.
- 4.2.3 The operator shall, unless notice under this condition has been served within the preceding 4 years, submit to the Agency, within 6 months of receipt of a written notice, a report assessing whether there are other appropriate measures that could be taken to prevent, or where that is not practicable, to minimise pollution.
- 4.2.4 All reports and notifications required by the permit shall be sent to the Agency using the contact details supplied in writing by the Agency
- 4.2.5 The results of reviews and any changes made to the site protection and monitoring programme shall be reported to the Agency, within 1 month of the review or change.
- 4.2.6 The operator shall by 1st October in each Assessment Year submit to the Agency a completed Form SO₂ (as referred to in Schedule 5, table S5.4) indicating the initial sulphur dioxide process B limits applicable for the next assessment year, subject to Agency approval.
- 4.2.7 From 1st January 2008, the operator shall submit revised forms SO₂ and NO₂ (as referred to in Schedule 5, table S5.4) within 28 days of the date of the closure of a relevant LCP.
- 4.2.8 The Operator shall by 1st October in each assessment year submit to the Agency a completed form NO₂ (as referred to in Schedule 5, table S5.4) indicating the initial oxides of nitrogen process B limits applicable for the next assessment year, subject to Agency approval.

4.3 Notifications

4.3.1 The Agency shall be notified without delay following the detection of:

- (a) any malfunction, breakdown or failure of equipment or techniques, accident, or fugitive emission which has caused, is causing or may cause significant pollution;
- (b) the breach of a limit specified in the permit;
- (c) any significant adverse environmental effects.

4.3.2 Any information provided under condition 4.3.1 shall be confirmed by sending the information listed in schedule 6 to this permit within the time period specified in that schedule.

4.3.3 Prior written notification shall be given to the Agency of the following events and in the specified timescales:

- (a) as soon as practicable prior to the permanent cessation of any of the activities;
- (b) cessation of operation of part or all of the activities for a period likely to exceed 1 year; and
- (c) resumption of the operation of part or all of the activities after a cessation notified under (b) above.

4.3.4 The Agency shall be given at least 14 days notice before implementation of any part of the site closure plan.

4.3.5 Where the Agency has requested in writing that it shall be notified when the operator is to undertake monitoring and/or spot sampling, the operator shall inform the Agency when the relevant monitoring is to take place. The operator shall provide this information to the Agency at least 14 days before the date the monitoring is to be undertaken.

4.3.6 The Agency shall be notified within 14 days of the occurrence of the following matters, except where such disclosure is prohibited by Stock Exchange rules:

- (a) any change in the operator's trading name, registered name or registered office address;
- (b) any change to particulars of the operator's ultimate holding company (including details of an ultimate holding company where an operator has become a subsidiary); and
- (c) any steps taken with a view to the operator going into administration, entering into a company voluntary arrangement or being wound up.

Notification of Closure of Large Combustion Plant

4.3.7 From 1st January 2008, the operator shall inform the Agency of the closure of a relevant LCP within 28 days of the date of closure.

4.4 Interpretation

4.4.1 In this permit the expressions listed in schedule 7 shall have the meaning given in that schedule.

Schedule 1 - Operations

Table S1.1 activities

Activity listed in Schedule 1 of the PPC Regulations	Description of specified activity	Limits of specified activity
Section 1.1 A(1) (a)	Burning any fuel in an appliance with a rated thermal input of 50 MW or more in 4 generating units and 4 open cycle gas turbines.	Receipt of coal and solid biomass at the coal mills and the supply of gas and oil to the combustion units, through to the discharge of exhaust gases from the stacks, ash removal and the export of steam to the steam system.
Section 3.5 B (f)	Pulverised Fuel Ash (PFA) handling and storage.	Receipt of ash from the combustion process and cooling water purge to despatch off site.
Directly Associated Activity	Description of specified activity	Limits of specified activity
	Fuel storage	Receipt and handling of coal, oil, gas and biomass up to the delivery of coal and solid biomass to the coal mills and delivery of oil and gas to the combustion units.
	The generation and export of electricity.	Receipt of steam at the steam turbine to the export of electricity to the national grid and the direct generation of electricity from the gas turbines.
	The use of water from the River Thames to condense steam.	Pumping, filtering and chemical treatment of the water, its use in six natural draught cooling towers and one forced draught purge water cooler, to the discharge of cooling water to ash handling and back to the River Thames.
	Water treatment	Receipt of town's water and regeneration chemicals to supply of treated water and releases to effluent water treatment and waste storage.
	Surface water drainage and process effluent	Handling and storage of site drainage from rainwater collection system, settlement lagoons, sumps and drains to discharge to the Moor Ditch.
	Waste handling and storage	Waste generation, storage and monitoring to waste despatch.

Table S1.2 Operating techniques

Description	Parts	Date Received
Application	The response to section B 2.1 and B 2.2 in the Application.	31/03/06

Table S1.3 Improvement programme requirements

Reference	Requirement	Date
IC1	<p>A written report shall be submitted to the Agency for approval. The report shall include the results of an assessment of whether there are other appropriate measures that could be taken to prevent, or where that is not practicable, to minimise pollution for the activities covered by this permit. The report shall be in sufficient detail to allow a permit review. The report shall also contain a timescale for the implementation of any individual measures identified to improve the performance of the installation, including emissions control performance, as appropriate following the review.</p> <p>The notification requirements of condition 2.5.2 shall be deemed to have been complied with on submission of the report.</p> <p>The individual measures detailed in the report shall be implemented by the operator from the date of approval in writing by the Agency.</p>	28/03/11
IC2	<p>A written report shall be submitted to the Agency for approval. The report shall contain a protocol detailing the methodology for measuring the fraction of PM10 and PM2.5 within the release of total particulate matter from the combustion process. The protocol shall include but not be restricted to a variety of operating scenarios including start up and shut down, changes in operating loads and patterns and types of abatement. The report shall also contain a proposed time-scale within which the proposed sampling program contained within the protocol will be completed.</p> <p>The notification requirements of condition 2.5.2 shall be deemed to have been complied with on submission of the report.</p> <p>The program shall be implemented by the operator from the date of approval in writing by the Agency.</p>	01/04/09
IC3	<p>A written report shall be submitted to the Agency for approval. The report shall include a detailed assessment, including economic factors, of the options to increase firing of biomass fuels. Where appropriate, the report shall contain dates for the implementation of individual measures.</p> <p>The notification requirements of condition 2.5.2 shall be deemed to have been complied with on submission of the report.</p> <p>The individual measures detailed in the report shall be implemented by the operator from the date of approval in writing by the Agency.</p>	01/04/08
IC4	<p>A written report shall be submitted to the Agency for approval. The report shall include the results of a water efficiency audit in accordance with section 2.4.3 of the Combustion Technical Guidance Note. The report shall also contain a timescale for the implementation of any individual measures identified to address any deficiencies.</p> <p>The notification requirements of condition 2.5.2 shall be deemed to have been complied with on submission of the report.</p> <p>The individual measures detailed in the report shall be implemented by the operator from the date of approval in writing by the Agency.</p>	28/03/09
IC5	<p>A written report shall be submitted to the Agency for approval. The report shall include the results of a waste minimisation audit in accordance with section 2.4.2 of the Combustion Technical Guidance Note. The report shall also contain a timescale for the implementation of any individual measures identified to address any deficiencies.</p> <p>The notification requirements of condition 2.5.2 shall be deemed to have been complied with on submission of the report.</p> <p>The individual measures detailed in the report shall be implemented by the operator from the date of approval in writing by the Agency.</p>	28/03/09
IC6	<p>The Operator shall confirm in writing to the Agency for approval, the method to be used for calculation of mass flowrate of emissions to air from the installation for reporting purposes.</p> <p>The notification requirements of condition 2.5.2 shall be deemed to have been complied with on submission of the report.</p> <p>The method shall be implemented by the operator from the date of approval in writing by the Agency.</p>	01/12/07

Table S1.3 Improvement programme requirements (continued)

Reference	Requirement	Date
IC7	<p>A written report shall be submitted to the Agency for approval detailing the results of a survey of hard-standing, kerbing and secondary containment for raw material and waste storage areas. The report shall assess the foregoing against the requirements of sections 2.2.6, 2.2.7 and 2.2.9 of the Combustion Technical Guidance Note. The report shall contain dates for the implementation of individual measures.</p> <p>The notification requirements of condition 2.5.2 shall be deemed to have been complied with on submission of the report.</p> <p>The individual measures identified by the report shall be implemented by the operator from the date of approval in writing by the Agency.</p>	28/03/08
IC8	<p>A written site closure plan shall be prepared and submitted to the Agency for approval to demonstrate that, in its current state, the installation can be decommissioned to avoid any pollution risk and the site of operation returned into a satisfactory state. The plan should comply with the requirements of section 2.11 of the Combustion Technical Guidance Note.</p> <p>The notification requirements of condition 2.5.2 shall be deemed to have been complied with on submission of the plan.</p> <p>The plan shall be implemented by the operator from the date of approval in writing by the Agency.</p>	28/03/08
IC9	<p>A written procedure shall be submitted to the agency detailing the measures to be used so that monitoring equipment, personnel and organisations employed for the emissions monitoring program shall have either MCERTS certification or accreditation in accordance with condition 3.6.3.</p> <p>The notification requirements of condition 2.5.2 shall be deemed to have been complied with on submission of the procedure.</p> <p>The procedure shall be implemented by the operator from the date of approval in writing by the Agency.</p>	28/03/08

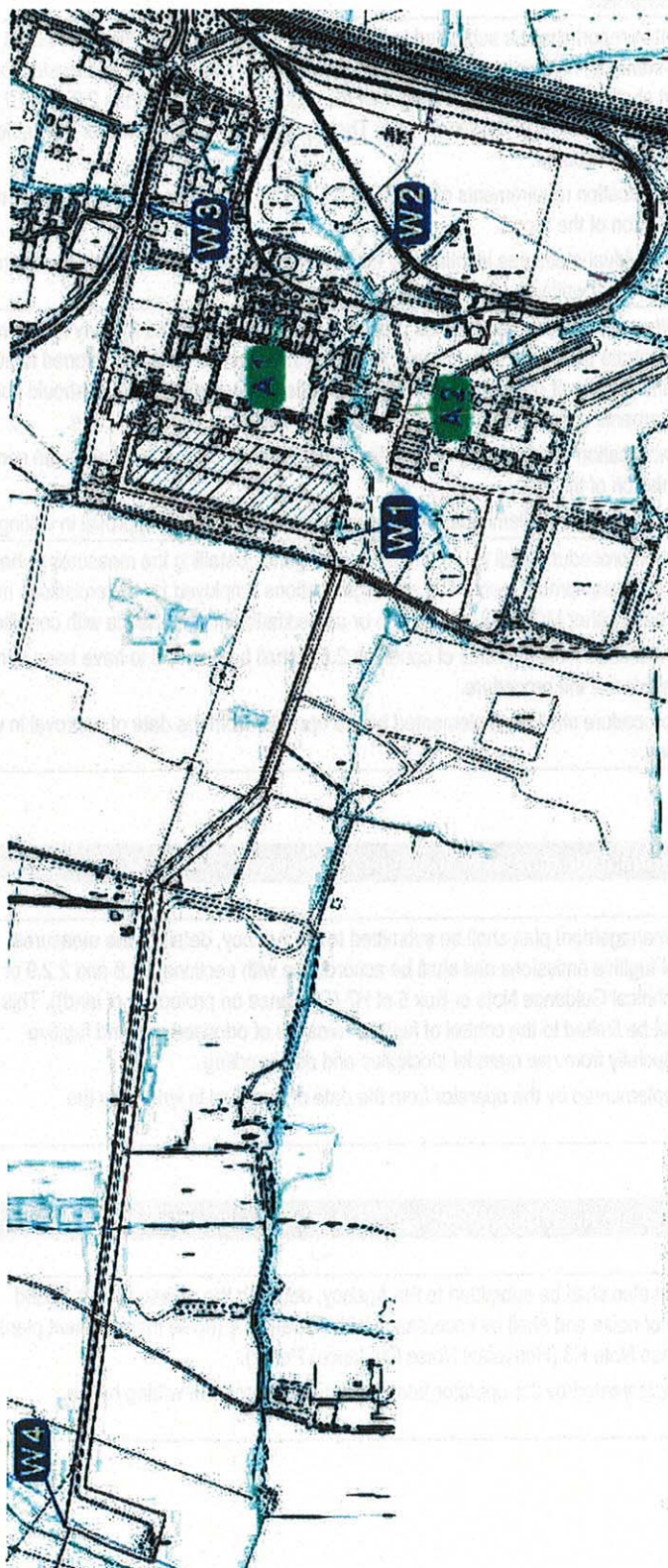
Table S1.4 Appropriate measures for fugitive emissions

Measure	Dates
<p>A fugitive emission management plan shall be submitted to the Agency, detailing the measures to be used to control fugitive emissions and shall be accordance with sections 2.2.8 and 2.2.9 of the Combustion Technical Guidance Note or Box 5 of H7 (Guidance on protection of land)). This shall consider but not be limited to the control of fugitive releases of odourised gas and fugitive releases of dust especially from raw material stockpiles and ash handling.</p> <p>The plan shall be implemented by the operator from the date of approval in writing by the Agency</p>	The plan shall be submitted by 28/06/08.

Table S1.5 Appropriate measures for noise

Measure	Dates
<p>A noise management plan shall be submitted to the Agency, detailing the measures to be used to control emissions of noise and shall be accordance with Appendix 4 (noise management plan) of Horizontal Guidance Note H3 (Horizontal Noise Guidance) Part 2).</p> <p>The plan shall be implemented by the operator from the date of approval in writing by the Agency.</p>	The plan shall be submitted by 28/06/08

Schedule 2 - Site plan



Reproduced from the Ordnance Survey map with the permission of the Controller of Her Majesty's Stationery Office
©Crown Copyright 2000. Unauthorised reproduction infringes Crown Copyright and may lead to prosecution or civil proceedings

Schedule 3 - Waste types, raw materials and fuels

Table S3.1 Raw materials and fuels

Raw materials and fuel description	Specification
Heavy Fuel Oil	Sulphur 1% w/w maximum
Gas Oil until 31/12/2007	Sulphur 0.2% w/w maximum
Gas Oil from 01/01/08	Sulphur 0.1% w/w maximum
Biomass fuels	As defined in Article 2(11) of EU Directive 2001/80/EC and included in the application or otherwise approved in writing by the Agency

Table S3.2 Permitted waste types and quantities for the use of fuels

Waste codes	
EWC Code	Description
Relevant exempt biomass	Biomass fuels exempt from the requirements of the WID and LCPD (as defined in Article 2(11) of the EU Directive 2001/80/EC and Article 2 of EU Directive 2000/76/EC)
Relevant exempt waste	Other fuels exempt from the requirements of the WID 2000/76/EC and approved in writing by the Agency for use in the installation.

Schedule 4 – Emissions and monitoring

For the purposes of this Schedule, the following interpretations shall apply:

- For the continuous measurement systems fitted to the LCP release points defined in Table S4.1 the validated hourly, daily and monthly averages shall be determined from the measured valid hourly average values after having subtracted the value of the 95% confidence interval.
- The 95% confidence interval for nitrogen oxides and sulphur dioxide of a single measured result shall be taken to be 20%.
- The 95% confidence interval for dust releases of a single measured result shall be taken to be 30%
- An invalid hourly average means an hourly average period invalidated due to malfunction of, or maintenance work being carried out on, the continuous measurement system. However, to allow some discretion for zero and span gas checking, or cleaning (by flushing), an hourly average period will count as valid as long as data has been accumulated for at least two thirds of the period (40 minutes). Such discretionary periods are not to exceed more than 5 in any one 24-hour period unless agreed in writing. Where plant may be operating for less than the 24-hour period, such discretionary periods are not to exceed more than one quarter of the overall valid hourly average periods unless agreed in writing.
- Any day, in which more than three hourly average values are invalid, shall be invalidated.

Table S4.1 Point source emissions to air – emission limits and monitoring requirements

Emission point ref. & location	Parameter	Source	Limit ^a (including unit)	Reference period	Monitoring frequency	Monitoring standard or method
Windshield 1 (A1, A2, A3, A4 [Point A1 on site plan in Schedule 2])	Particulate Matter	Large Combustion Plant (Boilers) ^f	50mg/m ³	Monthly average	Continuous	BS EN13284-2 ^{1,2}
			70mg/m ³	24hour average as 97 th ile		
			100mg/m ³	Hourly average as 97 th ile		
A1, A2, A3, A4 [Point A1 on site plan in Schedule 2]		Boiler Plant (until 31/12/07)	50mg/m ³	Monthly average		
			80mg/m ³	24hour average as 97 th ile		
			120mg/m ³	Hourly average as 97 th ile		
Windshield 2 (A5, A6, A7, A8 [Point A2 on site plan in Schedule 2])	No parameters set	Large Combustion Plant (Gas Turbines)	-	-	-	Permanent sampling access not required
Methane vents		Natural gas supply to boilers				
Hydrogen vents		Steam turbine generator cooling				
Emergency pressure relief vents		Pressure vessels				
Tank Vents		Chemicals and fuels storage tanks				
Minor combustion exhausts		Domestic boiler and fire pump				

^a Excludes start up and shut down

^f The large combustion plant limit applies as an average across all unabated units when two or more such units are operating

¹ Subject to the detailed requirements and interpretations agreed with the Environment Agency in the Joint Environmental Programme, Joint Industry/Environment Agency Working Group In stack monitoring, publication **“Monitoring SO₂, NO_x and Dust Emissions from Power Stations. A Guide to Current Best Practice for the Operators of Coal and Oil Fired Boilers”** PT/06/BE1916/R, Graham, D.P., December 2006 (or any subsequent revision to this agreed in writing with the Agency)

² Subject to the detailed requirements and interpretations agreed with the Environment Agency in the Joint Environmental Programme, Joint Industry/Environment Agency Working Group In stack monitoring publication **“Use of CEMs for Reporting Emissions of SO₂, NO_x and Dust under PPC and the LCPD. A Guide to Current Best Practice for the Operators of Coal and Oil Fired Boilers”** Graham, D.P., Salway, A.G., PT/06/BE1917/R, December 2006 (or any subsequent revision to this agreed in writing with the Agency)

Table S4.2 Point Source emissions to water (other than sewer) – emission limits and monitoring requirements

Emission point ref. & location	Source	Parameter	Limit (incl. unit)	Reference period	Monitoring frequency	Monitoring standard or method
W1 on site plan in schedule 2 (NGR SU 511 923) to River Thames via common outfall	Cooling towers blowdown, condensate, effluent from ash quenching and sluicing, water treatment plant and boiler blowdown	Total suspended solids	Content in intake water plus 85 mg/litre (max)(1 st November to 31 st March inclusive)	Spot	Weekly	BS EN 872
		Total suspended solids	Content in intake water plus 50 mg/litre (max) (1 st April to 31 st October inclusive)	Spot	Weekly	BS EN 872
		pH	6.5-9 (inclusive)	Instantaneous	Continuous	BS6068-2.50
		Oil or grease	20mg/litre (max) ¹	Spot	Weekly	SCA Blue book 77 ISBN 011751728
		Temperature	27 deg C (max)	Instantaneous	Continuous	Thermocouple
		BOD	10 mg/litre (max)	Spot	Monthly	SCA blue book 130. ISBN 011752212 0
		Flow	136,380 m ³ /day (max)	Day	Continuous	BS3680
		Copper and its compounds, expressed as copper (Total Cu)	225µg/litre (max)	Spot	Monthly	BS EN ISO 11885-1998 BS 6068-2.60:1998
		Zinc and its compounds, expressed as zinc (Total Zn)	150µg/litre (max)	Spot	Monthly	
		Sulphate (as SO ₄)	Twice the intake water value plus 460 mg/litre (max) but not exceeding 700 mg/litre total.	Spot	Monthly	SCA blue book 136. ISBN 011752240 6
		Total chlorine (as TRO)	100 µg/litre	Spot	Monthly	SCA blue book 27. ISBN 011751493 4
		Dissolved oxygen	Not less than 80% saturation.	Spot	Weekly	SCA blue book 16 ISBN 011751442 X

Table S4.2 Continued

W2 on site plan in schedule 2 (NGR SU 510 914) to Moor Ditch	Coal run-off water and surface water from Milton Heights and Didcot Spur Road	Total suspended solids	30 mg/litre (max)	Spot	Weekly	BS EN 872
		pH	6.5-9 (inclusive)	Spot	Weekly	SCA blue book 14. ISBN 011751428 4
		Oil or grease	20mg/litre (max) ¹	Spot	Weekly	SCA Blue book 77 ISBN 011751728
W3 on site plan in schedule 2 (NGR SU 515 915) to Moor Ditch	Site drainage including from the heavy fuel oil unloading area, the turbine hall and boiler house basement.	Total suspended solids	30 mg/litre (max)	Spot	Weekly	BS EN 872
		pH	6.5-9 (inclusive)	Spot	Weekly	SCA blue book 14. ISBN 011751428 4
		Oil or grease	20mg/litre (max) ¹	Spot	Weekly	SCA Blue book 77 ISBN 011751728
		BOD	20 mg/litre (max)	Spot	Monthly	SCA blue book 130. ISBN 011752212 0
W4 on site plan in schedule 2 (NGR SU 519 945) common outfall to River Thames.	Combined effluent W1 from Didcot A and W1 from Didcot B	pH	6.5-9 (inclusive)	Spot	Weekly	SCA blue book 14. ISBN 011751428 4
		Oil or grease	20mg/litre (max) ¹	Spot	Weekly	SCA Blue book 77 ISBN 011751728
		Temperature	27 deg C (max)			Thermocouple
		Flow	136,380 m ³ /day (max)	Day	Calculated	

¹ Oil and grease to be non-visible on the surface of the receiving waters in the immediate vicinity of the release points.

Table S4.3 Point source emissions to sewer, effluent treatment plant or other transfers off-site- emission limits and monitoring requirements

Emission point ref. & location	Parameter	Source	Limit (incl. Unit)	Reference period	Monitoring frequency	Monitoring standard or method
-	-	-	-	-	-	-

Table S4.4 Annual limits (Excluding start up and shut down except where otherwise stated).

Substance	Medium	Assessment year	Limit (including unit)	Release Points
Sulphur dioxide	Air		Installation A Limit (Includes start up and shut down)	A1, A2, A3, A4, (Windshield 1)A5, A6, A7, A8, (Windshield 2)(Boilers and OCGT's)
		01/10/06-31/12/07	87,100 tonnes	
		01/01/08-31/12/08 and subsequent years	67,000tonnes	
Sulphur dioxide	Air		Operator B limit^a	Relevant processes
		01/10/06-31/12/07	103,610 tonnes	
		01/01/08-31/12/08 and subsequent years	46,142 tonnes	
Sulphur dioxide	Air		Process B limit	A1, A2, A3, A4 (Windshield 1)
		01/10/06-31/12/07	As defined in schedule 7	
		01/01/08-31/12/08 and subsequent years		
Sulphur dioxide	Air		Annual ELV limit	Average across all boiler plant not fitted with FGD at all Relevant Processes ^b
		01/10/06-31/12/07	9.5 tSO ₂ /GWh	
		01/01/08-31/12/08 and subsequent years	7.5 tSO ₂ /GWh	
Oxides of nitrogen	Air		Installation Annual Release Limit (Includes start up and shut down)	A1, A2, A3, A4, (Windshield 1)A5, A6, A7, A8, (Windshield 2)(Boilers and OCGT's)
		01/10/06-31/12/07	35,750 tonnes	
		01/01/08-31/12/08 and subsequent years	27,500 tonnes	
Oxides of nitrogen	Air	01/01/08-31/12/08 and subsequent years	Operator B Limit^a	Relevant processes
Oxides of nitrogen	Air	01/01/08-31/12/08 and subsequent years	Process B limit	A1, A2, A3, A4 (Windshield 1)
Oxides of nitrogen	Air	01/01/08-31/12/08 and subsequent years	As defined in schedule 7	
Oxides of nitrogen	Air	01/01/08-31/12/08 and subsequent years	Annual ELV limit	Average across A1, A2, A3, A4 (Windshield 1)
			1.8 tNO _x /GWh	

^a or such other limit for that year as has been approved by the Agency following notification by the operator on form SO1 or NO1 (as referred to in Schedule 5, table S5.4).

^b In the case of an installation which contains boiler plant with and without FGD fitted in any assessment year the tSO₂/GWhr limit shall apply on the basis of an appropriate pro-rating, subject to prior approval by the Agency of the basis of the calculation.

Table S4.5 Process monitoring requirements

Emission point reference or source or description of point of measurement	Parameter	Monitoring frequency	Monitoring standard or method	Other specifications
River Thames intake water	Total suspended solids	Spot weekly	BS EN 872	
	Sulphate (as SO ₄)	Spot monthly	SCA Blue Book 136	

Schedule 5 - Reporting

Parameters, for which reports shall be made, in accordance with conditions of this permit, are listed below.

Table S5.1 Reporting of monitoring data

Parameter	Emission or monitoring point/reference	Reporting period	Period begins
Extractive sampling for SO ₂ , NO _x and particulate matter	A1, A2, A3, A4	Annually	01/04/07
Mass emission data for SO ₂ , NO _x and particulate matter including sulphur content of fuels.(including start up and shut down)	Windshield 1 & 2	Monthly	01/04/07
Mass emission data for SO ₂ , NO _x and particulate matter (excluding start up and shut down)	Windshield 1	Monthly	01/04/07
Mass emission data for SO ₂ , NO _x and particulate matter.(including start up and shut down)	Windshield 1 & 2	Annually	01/04/07
Particulate matter compliance	Windshield 1	Monthly	01/04/07
Emission to water sample and analysis results	W1, W2, W3, W4	Monthly	01/04/07
Sulphur dioxide Operator B Limit	Relevant processes	When an Operator wishes to make a transfer	Permit issue
Sulphur dioxide Process B Limit	Windshield 1	Required with Form SO1	Permit issue
Nitrogen oxides Operator B Limit	Relevant processes	When an Operator wishes to make a transfer	Permit issue
Nitrogen oxides Process B Limit	Windshield 1	Required with Form NO1	Permit issue

Table S5.2: Annual production/treatment

Parameter	Units
Power generated	GWh

Table S5.3 Performance parameters

Parameter	Frequency of assessment	Units
Abstracted River Water usage and specific usage	Annually	m ³ and m ³ /unit output
Towns Water usage and specific usage	Annually	m ³ and m ³ /unit output
Coal usage	Annually	MJ related to net cv
Coal usage	Monthly	t
Natural Gas usage	Annually	MJ related to net cv
Natural Gas usage	Monthly	T
Propane usage	Annually	MJ related to net cv
Propane usage	Monthly	T
Gas Oil usage	Annually	MJ related to net cv
Gas Oil usage	Monthly	T
Heavy Fuel Oil usage	Annually	MJ related to net cv
Heavy Fuel Oil usage	Monthly	T
Solid Biomass usage	Annually	MJ related to net cv
Solid Biomass usage	Monthly	T
Liquid Biomass usage	Annually	MJ related to net cv
Liquid Biomass usage	Monthly	t
Operating hours	Monthly	h
CEM Invalidation	Annually	

Table S5.4 Reporting forms

Media/ parameter	Reporting format	Starting Point	Agency recipient	Date of form
Air / Installation monthly fuel use and releases	Form ESI/01 or other form as agreed in writing by the Agency	01/04/07	SI & Central Office	Permit issue
Air/ LCP1 monthly and cumulative releases	Form ESI/02 or other form as agreed in writing by the Agency	01/04/07	SI & Central Office	Permit issue
Air/ LCP1 monthly mean concentrations and operational hours	Form ESI/03 or other form as agreed in writing by the Agency	01/04/07	SI & Central Office	Permit issue
Air/ Installation energy input and releases	Form ESI/04 or other form as agreed in writing by the Agency	01/04/07	SI and Central Office	Permit issue
Air/ LCP1 Extractive sampling results	Form ESI/05 or other form as agreed in writing by the Agency	01/04/07	SI and Central Office	Permit issue
Air/ LCP1 Reporting of continuous measurement systems invalidation	Form ESI/06 or other form as agreed in writing by the Agency	Permit Issue	SI & Central office	Permit Issue
Water/ Emission to water sample and analysis results	Form W1 or other form as agreed in writing by the Agency	01/04/07	SI	Permit issue
Sulphur dioxide Operator B Limit	Form SO1 or other form as agreed in writing by the Agency	Permit issue	SI & Central Office	Permit issue
Sulphur dioxide Process B Limit	Form SO2 or other form as agreed in writing by the Agency	Permit issue	SI & Central Office	Permit issue
Nitrogen oxides Operator B Limit	Form NO1 or other form as agreed in writing by the Agency	Permit issue	SI & Central Office	Permit issue
Nitrogen oxides Process B Limit	Form NO2 or other form as agreed in writing by the Agency	Permit issue	SI & Central Office	Permit issue

Schedule 6 - Notification

These pages outline the information that the operator must provide.

Units of measurement used in information supplied under Part A and B requirements shall be appropriate to the circumstances of the emission. Where appropriate, a comparison should be made of actual emissions and authorised emission limits.

If any information is considered commercially confidential, it should be separated from non-confidential information, supplied on a separate sheet and accompanied by an application for commercial confidentiality under the provisions of the PPC Regulations.

Part A

Permit Number	YP3030LR
Name of operator	RWE npower plc
Location of Installation	Didcot A Power Station
Time and date of the detection	

(a) Notification requirements for any malfunction, breakdown or failure of equipment or techniques, accident, or fugitive emission which has caused, is causing or may cause significant pollution	
To be notified within 24 hours of detection	
Date and time of the event	
Reference or description of the location of the event	
Description of where any release into the environment took place	
Substances(s) potentially released	
Best estimate of the quantity or rate of release of substances	
Measures taken, or intended to be taken, to stop any emission	
Description of the failure or accident.	

(b) Notification requirements for the breach of a limit	
To be notified within 24 hours of detection unless otherwise specified below	
Emission point reference/ source	
Parameter(s)	
Limit	
Measured value and uncertainty	
Date and time of monitoring	
Measures taken, or intended to be taken, to stop the emission	

Time periods for notification following detection of a breach of a limit	
Parameter	Notification period

(c) Notification requirements for the detection of any significant adverse environmental effect	
To be notified within 24 hours of detection	
Description of where the effect on the environment was detected	
Substances(s) detected	
Concentrations of substances detected	
Date of monitoring/sampling	

Part B - to be submitted as soon as practicable

Any more accurate information on the matters for notification under Part A.	
Measures taken, or intended to be taken, to prevent a recurrence of the incident	
Measures taken, or intended to be taken, to rectify, limit or prevent any pollution of the environment which has been or may be caused by the emission	
The dates of any unauthorised emissions from the installation in the preceding 24 months.	

Name*	
Post	
Signature	
Date	

* authorised to sign on behalf of RWE npower plc

Schedule 7 - Interpretation

"*accident*" means an accident that may result in pollution.

"*annually*" means once every year.

"*Agency recipient*" means -where this is "SI" - the Agency site inspector for the installation and where this is "Central Office" this is to an address of an Agency national function separately notified to the operator.

"*assessment year*" means any complete calendar year except that the first assessment year for the purposes of this permit shall run from 1 October 2006 until 31st December 2007

"*application*" means the application for this permit, together with any additional information supplied by the operator as part of the application and any response to a notice served under Schedule 4 to the PPC Regulations.

"*authorised officer*" means any person authorised by the Agency under section 108(1) of The Environment Act 1995 to exercise, in accordance with the terms of any such authorisation, any power specified in section 108(4) of that Act.

"*Combustion Technical Guidance Note*" means IPPC Sector Guidance Note Combustion Activities, version 2.03 dated 27th July 2005 published by Environment Agency.

"*emissions to land*", includes emissions to groundwater.

"*fugitive emission*" means an emission to air, water or land from the activities which is not controlled by an emission limit.

"*groundwater*" means all water, which is below the surface of the ground in the saturation zone and in direct contact with the ground or subsoil.

"*installation*" means the process subject to this permission.

"*land protection guidance*", means Agency guidance "H7 - Guidance on the protection of land under the PPC Regime: application site report and site protection monitoring programme".

"*large combustion plant*" or "*LCP*" is a combustion plant or group of combustion plants discharging waste gases through a common windshield or stack, where the total thermal input is 50 MWth or more, based on gross calorific value.

"*Large Combustion Plant Directive*" means Directive 2001/80/EC of the European Parliament and of the Council of 23 October 2001 on the limitation of emissions of certain pollutants into the air from large combustion plants.

"*MCERTS*" means the Environment Agency's Monitoring Certification Scheme.

"*notify without delay*" / "*notified without delay*," means that a telephone call can be used, whereas all other reports and notifications must be supplied in writing, either electronically or on paper.

"*operational hours*" are whole hours commencing from the first unit ending start up and ending when the last unit commences shut down.

"*operator B Limit*" means the limit for the assessment year in question specified in column 3 of Table S4.4 in Schedule 4 or such other limit for that year as has been approved by the Agency following notification by the operator on form SO1 or NO1, as referred to in Schedule 5, table S5.4.

"*process B limit*" means such limit for the assessment year in question, as has been approved by the Agency following a notification by the operator on form SO2 or NO2, as referred to in Schedule 5, table S5.4

"*PPC Regulations*" means the Pollution, Prevention and Control (England and Wales) Regulations SI 2000 No.1973 and words and expressions used in this permit which are also used in the Regulations have the same meanings as in those Regulations.

"quarter" means a calendar year quarter commencing on 1 January, 1 April, 1 July or 1 October.

"relevant processes" means the combustion processes at Didcot A Power Station and those at Aberthaw Power Station, Fawley Power Station, Littlebrook Power Station and Tilbury Power Station carried on by RWE npower plc which are subject to permits requiring compliance with an operator B limit and "relevant process" means any one such process carried on by RWE npower plc.

"shut down" is defined as when the output from last unit within an LCP has fallen below SOP in accordance with "Principles for Determining MSG and SOP Thresholds for a Unit" Issue 3.0, 23 October 2006 or any subsequent revision to this protocol agreed in writing with the Agency

"site protection and monitoring programme" means a document which meets the requirements for site protection and monitoring programmes described in the Land Protection Guidance.

"start up" is defined as when the first unit within an LCP has started up in accordance with "Principles for Determining MSG and SOP Thresholds for a Unit" Issue 3.0, 23 October 2006 or any subsequent revision to this protocol agreed in writing with the Agency

"t SO₂/GWh" in Table S4.4 is given by the following equation,

$$t.SO_2/GWh = Tot_s/G_e$$

Where:

Tot_s is the total mass of SO₂ released over an Assessment Year.

G_e is the total electricity generated using fuels combusted at the power station expressed as GWh over an Assessment Year.

In the absence of an agreed protocol based on the continuous measurement of sulphur dioxide or other method agreed in writing with the Agency, the release of sulphur dioxide shall be calculated in accordance with the formula:

$$\text{Sulphur dioxide released (Tot}_s\text{)(tonnes) = } [(Sc \times Tc \times 0.95) + (So \times To) + (Sg \times Tg)] \times 0.02$$

where -

Sc	=	sulphur content of solid fuel (% w/w);
So	=	sulphur content of liquid fuel (% w/w);
Sg	=	sulphur content of gas (% w/w);
Tc	=	solid fuel burned (tonnes);
To	=	liquid fuel burned (tonnes);
Tg	=	gaseous fuel burned (tonnes)

"waste code" means the six digit code referable to a type of waste in accordance with the List of Wastes (England) Regulations 2005, or List of Wastes (Wales) Regulations 2005, as appropriate, and in relation to hazardous waste, includes the asterisk.

"year" means calendar year ending 31 December.

Where a minimum limit is set for any emission parameter, for example pH, reference to exceeding the limit shall mean that the parameter shall not be less than that limit.

Unless otherwise stated, any references in this permit to concentrations of substances in emissions into air means:

- (a) in relation to emissions from combustion processes, the concentration in dry air at a temperature of 273K, at a pressure of 101.3 kPa and with an oxygen content of 3% dry for liquid and gaseous fuels, 6% dry for solid fuels, 15% dry for gas turbines; and/or
- (b) in relation to emissions from non-combustion sources, the concentration at a temperature of 273K and at a pressure of 101.3 kPa, with no correction for water vapour content

END OF PERMIT



**ENVIRONMENT
AGENCY**

Variation Notice with introductory note

Pollution Prevention and Control (England & Wales) Regulations 2000

Didcot A Power Station

RWE npower plc
Didcot A Power Station
Didcot
Oxfordshire
OX11 7HA

Variation Notice Number
KP3238XZ

Permit number
YP3030LR

Didcot A Power Station Permit Number YP3030LR

Introductory note

This introductory note does not form a part of the permit

The following notice is issued under regulation 17 of The Pollution Prevention and Control (England and Wales) Regulations 2000 (S.I.2000 No. 1973 (as amended) (the Regulations) to vary the conditions of a permit issued under the Regulations to operate an installation. The notice comprises schedule 1 containing conditions to be deleted, schedule 2 conditions to be amended and schedule 3 conditions to be added.

This notice amends the particulate matter emission limit values to bring them into line with the windshield definition of Large Combustion Plant under the Large Combustion Plant Directive.

Status Log of the permit		
Detail	Date	Response Date
Application YP3030LR	Duly made 31/03/06	
Submission of additional air dispersion modelling results	05/09/06	-
Submission of site plan for permit	23/11/06	-
Permit determined	28/03/07	-
Variation notice KP3238XZ issued	03/03/08	-

Other PPC permits relating to this installation		
Operator	Permit Number	Date of Issue
NONE		

Superseded or Partially Superseded Licences/Authorisations/Consents relating to this installation			
Holder	Reference Number	Date of Issue	Fully or Partially Superseded
RWE npower (IPC Authorisation)	AA3107 as varied	08/04/93	Fully superseded

Other existing Licences/Authorisations/Registrations relating to this site		
Holder	Reference Number	Date of issue
RWE npower (Water Abstraction Licence)	28/39/18/59	17/05/00

End of Introductory Note

Variation Notice

Pollution Prevention and Control
(England and Wales) Regulations 2000

Variation Notice

Permit number

YP3030LR

Variation number

KP3238XZ

The Environment Agency (the Agency) in exercise of its powers under Regulation 17 of the Pollution Prevention and Control (England and Wales) Regulations 2000 (SI 2000 No 1973) hereby varies the permit held by you

RWE npower plc ("the operator"),

whose registered office (or principal office) is

Windmill Hill Business Park

Whitehill Way

Swindon

Wiltshire

SN5 6PB

company registration number **3892782**

to operate an installation at

Didcot A Power Station

Didcot

Oxfordshire

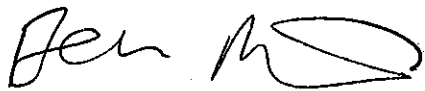
OX11 7HA

to the extent set out in schedules 1 to 3 of this variation notice .

The notice shall take effect from 03/03/08

Signed

Date

	5/3/08
---	---------------

Mr B Morrish

Authorised to sign on behalf of the Agency

SCHEDULE 1 – CONDITIONS TO BE DELETED

None

SCHEDULE 2 – CONDITIONS TO BE AMENDED

1. The following conditions are amended as follows :
 - 3.7.6 Where required by a condition of this permit to check the measurement equipment, the operator shall submit a report to the Agency in writing, within 56 days of the completion of the check.

 - 4.2.1 A report or reports on the performance of the activities over the previous year shall be submitted to the Agency by 28 February (or other date agreed in writing by the Agency) each year. The report(s) shall include as a minimum:
 - (a) a review of the results of the monitoring and assessment carried out in accordance with this permit against the relevant assumptions, parameters and results in the assessment of the impact of the emissions submitted with the application;
 - (b) where the operator's management system encompasses annual improvement targets, a summary report of the previous year's progress against such targets;
 - (c) the annual production /treatment data set out in schedule 5 table S5.2;
 - (d) the performance parameters set out in schedule 5 table S5.3 using the forms specified in table S5.4 of that schedule; and
 - (e) details of any contamination or decontamination of the site which has occurred.

2. The following tables are amended as follows :

Table S4.1 Point source emissions to air – emission limits and monitoring requirements

Emission point ref. & location	Parameter	Source	Limit ^a (including unit)	Reference period	Monitoring frequency	Monitoring standard or method
Windshield 1 (A1, A2, A3, A4 [Point A1 on site plan in Schedule 2])	Particulate Matter	Large Combustion Plant (Boilers)	50mg/m ³	Monthly average	Continuous	BS EN13284-2 ^{1,2}
A1, A2, A3, A4 [Point A1 on site plan in Schedule 2]		Boiler Plant (until 31/12/07)	50mg/m ³	Monthly average		
			80mg/m ³	24hour average as 97%ile		
			120mg/m ³	Hourly average as 97%ile		
Windshield 2 (A5, A6, A7, A8 [Point A2 on site plan in Schedule 2])	No parameters set	Large Combustion Plant (Gas Turbines)	-	-	-	Permanent sampling access not required
Methane vents		Natural gas supply to boilers				
Hydrogen vents		Steam turbine generator cooling				
Emergency pressure relief vents		Pressure vessels				
Tank Vents		Chemicals and fuels storage tanks				
Minor combustion exhausts		Domestic boiler and fire pump				

^aExcludes start up and shut down.

1) Subject to the detailed requirements and interpretations agreed with the Environment Agency in the Joint Environmental Programme, Joint Industry/Environment Agency Working Group In stack monitoring, publication "**Monitoring SO₂ and NO_x and Dust Emissions from Power Stations – A Guide to Current Best Practice for the Operators of Coal and Oil Fired Boilers**" PT/06/BE1916/R, D.P.Graham, December 2006 (or any subsequent revision to this agreed in writing with the Environment Agency)

2) Subject to the detailed requirements and interpretations agreed with the Environment Agency in the Joint Environmental Programme, Joint Industry/Environment Agency Working Group In stack monitoring publication "**Use of CEMs for Reporting Emissions of SO₂, NO_x and Dust under PPC and the LCPD. A Guide to Current Best Practice for the Operators of Coal and Oil Fired Boilers**" Graham, D.P., Salway, G, PT/06/BE1917/R, December 2006" (or any subsequent revision to this agreed in writing with the Environment Agency)

Table S4.2 Point Source emissions to water (other than sewer) – emission limits and monitoring requirements

Emission point ref. & location	Source	Parameter	Limit (incl. unit)	Reference period	Monitoring frequency	Monitoring standard or method
W1 on site plan in schedule 2 (NGR SU 511 923) to River Thames via common outfall	Cooling towers blowdown, condensate, effluent from ash quenching and sluicing, water treatment plant and boiler blowdown	Total suspended solids	Content in intake water plus 85 mg/litre (max)(1 st November to 31 st March inclusive)	Spot	Weekly	BS EN 872
		Total suspended solids	Content in intake water plus 50 mg/litre (max) (1 st April to 31 st October inclusive)	Spot	Weekly	BS EN 872
		pH	6.5-9 (inclusive)	Instantaneous	Continuous	BS6068-2.50
		Oil or grease	20mg/litre (max) ¹	Spot	Weekly	SCA Blue book 77 ISBN 011751728
		Temperature	27 deg C (max)	Instantaneous	Continuous	Thermocouple
		BOD	10 mg/litre (max)	Spot	Monthly	SCA blue book 130. ISBN 011752212 0
		Flow	136,380 m ³ /day (max)	Day	Continuous	BS3680
		Copper and its compounds, expressed as copper (Total Cu)	225µg/litre (max)	Spot	Monthly	BS EN ISO 11885-1998 BS 6068-2.60:1998
		Zinc and its compounds, expressed as zinc (Total Zn)	150µg/litre (max)	Spot	Monthly	
		Sulphate (as SO ₄)	Twice the intake water value plus 460 mg/litre (max) but not exceeding 700 mg/litre total.	Spot	Monthly	SCA blue book 136. ISBN 011752240 6
Total chlorine (as TRO)	100 µg/litre	Spot	Monthly	SCA blue book 27. ISBN 011751493 4		
Dissolved oxygen	Not less than 80% saturation.	Spot	Weekly	SCA blue book 16 ISBN 011751442 X		

Table S4.2 Continued

W2 on site plan in schedule 2 (NGR SU 510 914) to Moor Ditch	Coal run-off water and surface water from Milton Heights and Didcot Spur Road	Total suspended solids	30 mg/litre (max)	Spot	Weekly	BS EN 872
		pH	6.5-9 (inclusive)	Spot	Weekly	SCA blue book 14. ISBN 011751428 4
		Oil or grease	20mg/litre (max) ¹	Spot	Weekly	SCA Blue book 77 ISBN 011751728
W3 on site plan in schedule 2 (NGR SU 515 915) to Moor Ditch	Site drainage including from the heavy fuel oil unloading area, the turbine hall and boiler house basement.	Total suspended solids	30 mg/litre (max)	Spot	Weekly	BS EN 872
		pH	6.5-9 (inclusive)	Spot	Weekly	SCA blue book 14. ISBN 011751428 4
		Oil or grease	20mg/litre (max) ¹	Spot	Weekly	SCA Blue book 77 ISBN 011751728
		BOD	20 mg/litre (max)	Spot	Monthly	SCA blue book 130. ISBN 011752212 0
W4 on site plan in schedule 2 (NGR SU 519 945) common outfall to River Thames.	Combined effluent W1 from Didcot A and W1 from Didcot B	pH	6.5-9 (inclusive)	Spot	Weekly	SCA blue book 14. ISBN 011751428 4
		Oil or grease	20mg/litre (max) ¹	Spot	Weekly	SCA Blue book 77 ISBN 011751728
		Temperature	27 deg C (max)			Thermocouple
		Flow	136,380 m ³ /day (max)	Day	Calculated	

The Monitoring methods referred to in Schedule S4.2 are to be used unless otherwise agreed in writing with the Agency.

Table S4.4 Annual limits (Excluding start up and shut down except where otherwise stated).

Substance	Medium	Assessment year	Limit (including unit) ¹	Release Points
Sulphur dioxide	Air		Installation A Limit (Includes start up and shut down)	A1, A2, A3, A4, (Windshield 1)A5, A6, A7, A8, (Windshield 2)(Boilers and OCGT's)
		01/10/06-31/12/07	87,100 tonnes	
		01/01/08-31/12/08 and subsequent years	67,000tonnes	
Sulphur dioxide	Air		Operator B limit^a	Relevant processes
		01/10/06-31/12/07	103,610 tonnes	
		01/01/08-31/12/08 and subsequent years	46,142 tonnes	
Sulphur dioxide	Air		Process B limit	A1, A2, A3, A4 (Windshield 1)
		01/10/06-31/12/07	As defined in schedule 7	
		01/01/08-31/12/08 and subsequent years		
Sulphur dioxide	Air		Annual ELV limit	Average across all boiler plant not fitted with FGD at all Relevant Processes ^b
		01/10/06-31/12/07	9.5 tSO ₂ /GWh	
		01/01/08-31/12/08 and subsequent years	7.5 tSO ₂ /GWh	
Oxides of nitrogen	Air		Installation Annual Release Limit (Includes start up and shut down)	A1, A2, A3, A4, (Windshield 1)A5, A6, A7, A8, (Windshield 2)(Boilers and OCGT's)
		01/10/06-31/12/07	35,750 tonnes	
		01/01/08-31/12/08 and subsequent years	27,500 tonnes	
Oxides of nitrogen	Air		Operator B Limit^a	Relevant processes
		01/01/08-31/12/08 and subsequent years	68,710 tonnes	
Oxides of nitrogen	Air		Process B limit	A1, A2, A3, A4 (Windshield 1)
		01/01/08-31/12/08 and subsequent years	As defined in schedule 7	
Oxides of nitrogen	Air		Annual ELV limit	Average across A1, A2, A3, A4 (Windshield 1)
		01/01/08-31/12/08 and subsequent years	1.8 tNO _x /GWh	

^a or such other limit for that year as has been approved by the Agency following notification by the operator on form SO1 or form NO1(as referred to in Schedule 5, table S5.4).

^b In the case of an installation which contains boiler plant with and without FGD fitted in any assessment year the tSO₂/GWhr limit shall apply on the basis of an appropriate pro-rating, subject to prior approval by the Agency of the basis of the calculation.

¹ According to compliance requirements under Article 12 and Annex VIII of the Large Combustion Plant Directive, and the monitoring methods, procedures, definitions, treatment of data and interpretations approved by the Environment Agency, as appropriate, in:

i) The Joint Environmental Programme, Joint Industry/Environment Agency Working Group In stack monitoring, publication "Monitoring SO₂ and NO_x and Dust Emissions from Power Stations –

A Guide to Current Best Practice for the Operators of Coal and Oil Fired Boilers”

PT/06/BE1916/R, D.P. Graham, December 2006 (or any subsequent revision to this approved in writing with the Environment Agency)

ii) The Joint Environmental Programme, Joint Industry/Environment Agency Working Group In stack monitoring publication **“Use of CEMs for Reporting Emissions of SO₂, NO_x and Dust under PPC and the LCPD. A Guide to Current Best Practice for the Operators of Coal and Oil Fired Boilers”** Graham, D.P., Salway, G, PT/06/BE1917/R, December 2006 (or any subsequent revision to this approved in writing by the Environment Agency)

Table S5.1 Reporting of monitoring data			
Parameter	Emission or monitoring point/reference	Reporting period	Period begins
Mass emission data for SO ₂ , NO _x and particulate matter including sulphur content of fuels.(including start up and shut down)	Windshield 1 & 2	Monthly	01/04/07
Mass emission data for SO ₂ , NO _x and particulate matter (excluding start up and shut down)	Windshield 1	Monthly	01/04/07
Mass emission data for SO ₂ , NO _x and particulate matter.(including start up and shut down)	Windshield 1 & 2	Annually	01/04/07
Particulate matter compliance	Windshield 1	Monthly	01/04/07
Emission to water sample and analysis results	W1, W2, W3, W4	Monthly	01/04/07
Sulphur dioxide Operator B Limit	Relevant processes	When an Operator wishes to make a transfer	Permit issue
Sulphur dioxide Process B Limit	Windshield 1	Required with Form SO1	Permit issue
Nitrogen oxides Operator B Limit	Relevant processes	When an Operator wishes to make a transfer	Permit issue
Nitrogen oxides Process B Limit	Windshield 1	Required with Form NO1	Permit issue

Table S5.4 Reporting forms				
Media/ parameter	Reporting format	Starting Point	Agency recipient	Date of form
Air/ Installation monthly fuel use and releases	Form ESI/01 or other form as agreed in writing by the Agency	01/04/07	SI & Central Office	Permit issue
Air/ LCP1 monthly and cumulative releases	Form ESI/02 or other form as agreed in writing by the Agency	01/04/07	SI & Central Office	Permit issue
Air/ LCP1 monthly mean concentrations and operational hours	Form ESI/03 or other form as agreed in writing by the Agency	01/04/07	SI & Central Office	Permit issue
Air/ Installation energy input and releases	Form ESI/04 or other form as agreed in writing by the Agency	01/04/07	SI and Central Office	Permit issue
Water/ Emission to water sample and analysis results	Form W1 or other form as agreed in writing by the Agency	01/04/07	SI	Permit issue
Sulphur dioxide Operator B Limit	Form SO1 or other form as agreed in writing by the Agency	Permit issue	SI & Central Office	Permit issue
Sulphur dioxide	Form SO2 or other form as	Permit	SI & Central	Permit

Process B Limit	agreed in writing by the Agency	issue	Office	issue
Nitrogen oxides Operator B Limit	Form NO1 or other form as agreed in writing by the Agency	Permit issue	SI & Central Office	Permit issue
Nitrogen oxides Process B Limit	Form NO2 or other form as agreed in writing by the Agency	Permit issue	SI & Central Office	Permit issue

SCHEDULE 3 – CONDITIONS TO BE ADDED

1. None

Pollution Prevention and Control (England and Wales) Regulations 2000 (S.I. 2000 No. 1973) as amended

TECHNICAL TRAIL

VARIATION OF AUTHORISATION YP3030LR

UNDER Regulation 17 of the PPC regulations (England and Wales) 2000 (S.I. 2000 No. 1973) as amended

Applicant: RWE npower plc

Premises to which application applies: Didcot A Power Station
Didcot
Oxfordshire
OX11 7HA

Description of Process: Predominately coal fired power station with four units each producing 400MW of electrical energy. The station has opted to take the 20,000hrs derogation and will close when those hours are used or by 2015 whichever is earlier. The station also has standby gas turbines that are used to provide a black start capability in the event of an electrical grid collapse.

Brief Description of Variation:

Agency initiated variation to amend table S4.1 particulate limits to 50mg/m³ averaged over the four flues. Minor amendments to other tables and conditions to incorporate minor changes agreed by exchange of letter.

Authorisation Number: YP3030LR

Variation Number: KP3238XZ

1. OVERVIEW

The variation has been initiated centrally to amend Schedule 4 table S4.1 in the permit. For the purpose of :

1) bringing the monitoring requirements in line with the Future Regulatory Framework - ie by setting only a monthly average dust emission limit value of 50mg/m³ across the windshield and to remove the annual extractive test (this is now covered by QAL3)

2) to strengthen the reference to the monitoring protocols. I have done this by inserting a reference to the protocols in table 4.4. Superscript 1 applies to the limit column ie all the limits must be applied in accordance with the protocols. Prior to this change the operators could argue that the only reference was via the particulate limit in table 4.1.

In addition the opportunity has been taken to amend several conditions to reflect minor changes agreed by exchange of letters.

3. DETERMINATION OF WHETHER SUBSTANTIAL CHANGE

This is a non-substantial/minor variation. No major changes have taken place at the installation. This is a non chargeable variation.

4. IMPLICATIONS FOR OTHER LEGISLATION

There are no further issues concerning waste management licensing.
No other legislation is affected.

5. SUMMARY OF CHANGES TO PERMIT

- 3.7.6 amended time to submit to 56 days from check. The completion of the check is taken to be the day that the sampling is completed. This give sufficient time for the contractor to produce a valid report and for it to be submitted to Agency.
- 4.2.1 amended date for submission to 28 February each year. This was agreed as the report has to be collated and approved by the board. This cannot be accomplished by 31 January. We believe that an improved quality of report will be submitted by waiting until 28 February.
- Schedule 4 table 4.1 the amended table has been reproduced. This requires the limit to be averaged across the Large Combustion plant. The emission limit is 50mg/m³. This now reflects BAT as described in the Future Regulatory Framework Document.
- In schedule 4 table S4.4 specific reference to the agreed protocols is added to strengthen the link between the protocols and the permit.
- Schedule 4 table S4.2 the references to the methods to be used for analysis have been updated to reflect the methods agreed in letter date 5 November 2007. Some of the original methods were not current and could not be reproduced in the laboratory. The methods chosen are all BS EN or nearest equivalent.
- Schedule 5 Table 5.1 empty lines removed
- Schedule 5 Table 5.1 reference to redundant forms removed.

The variation was reviewed by the Operator. Suggestions made have been incorporated as appropriate.

The Variation has been peer reviewed by Mr G Elliot and appropriate changes made.

Produced by: D Rowlands

Date : 1/02/08

Notice of variation with introductory note

Environmental Permitting (England & Wales) Regulations 2010

RWE npower plc

Didcot A Power Station
Didcot
Oxfordshire
OX11 7HA

Variation application number
EPR/YP3030LR/V003

Permit number
EPR/YP3030LR

Didcot A Power Station

Permit number EPR/YP3030LR

Introductory note

This introductory note does not form a part of the notice

The following notice gives notice of the variation of an environmental permit.

This variation has been issued in response to an application made by the operator and amends the operational boundary of Didcot A Power Station (the site). This boundary amendment now excludes the open cycle gas turbines, supporting infrastructure and control from Didcot A's Permit. It also now excludes the cooling water pump house and the route of the cooling water pipes through to the River Thames. The control and responsibility for these assets will transfer to Didcot B Power Station, whose permit is being varied in parallel to incorporate these assets. This variation will enable the continued operation of the open gas cycle turbines in a national grid support capacity whilst remaining under the control and safeguards of Didcot B power station Permit (YP3930LZ).

The variation also removes most monitoring and reporting requirements for the power station as it has now shut down.

The schedules specify the changes made to the permit.

The status log of a permit sets out the permitting history, including any changes to the permit reference number.

Status log of the permit		
Description	Date	Comments
Application YP3030LR	Duly made 31/03/06	
Submission of additional air dispersion modelling.	05/09/06	
Submission of site plan for permit	23/03/07	
Permit determined	28/03/07	Original permit issued to RWE npower plc.
Variation Notice KP3238XZ issued	03/03/08	
Variation application EPR/YP3030LR/V003	Duly made 13/05/13	
Variation determined EPR/YP3030LR	07/08/13	Varied permit issued

Other existing Licences/Authorisations/Registration relating to this site

Holder	Reference Number	Date of Issue
RWE npower (Water Abstraction)	28/39/18/59	17/05/00

End of introductory note

Notice of variation

Environmental Permitting (England and Wales) Regulations 2010

The Environment Agency in exercise of its powers under regulation 20 of the Environmental Permitting (England and Wales) Regulations 2010 varies

Permit number
EPR/YP3030LR

issued to:
RWE npower (“the operator”)

whose registered office is RWE npower PLC
Windmill Hill Business Park
Whitehill Way
Swindon
Wiltshire
SN5 6PB

company registration number 03892782

to operate a regulated facility at

Didcot A Power Station
Didcot,
Oxfordshire
OX11 7HA

to the extent set out in the schedules.

The notice shall take effect from 07/08/2013

Name	Date
A.J. Nixon	07 August 2013

Authorised on behalf of the Environment Agency

Schedule 1 – conditions to be deleted

The following conditions are deleted as a result of the application made by the operator

1. Condition 4.2.6
2. Condition 4.2.8

Schedule 2 – conditions to be amended

The following tables and conditions are amended as a result of the application made by the operator:

1. Table S1.1 amended to remove reference to the OCGTs

Table S1.1 activities		
Activity listed in Schedule 1 of the PPC Regulation	Description of specified activity	Limits of specified activity
Section 1.1 A(1) (a)	Burning any fuel in an appliance with a rated thermal input of 50 MW or more.	Receipt of coal and solid biomass at the coal mills and the supply of gas and oil to the combustion units, through to the discharge of exhaust gases from the stacks, ash removal and the export of steam to the steam system.
Section 3.5 B (f)	Pulverised Fuel Ash (PFA) handling and storage.	Receipt of ash from the combustion process and cooling water purge to despatch off site.
Directly Associated Activity.	Description of specified Activity.	Limits of specified.
	Water Treatment	Receipt of town's water and regeneration chemicals to supply and treated water and release to effluent water treatment and waste storage.
	Surface water drainage and process effluent.	Handling and storage of site drainage from rainwater collection system, settlement

		lagoons, sumps and drains to discharge to the Moor Ditch.
	Waste handling and storage.	Waste generation, storage and monitoring to waste despatch.

2. Table S1.2 amended to exclude operating techniques for the OCGT's.

Table S1.2 Operating techniques

Description	Parts	Date
Application	The response to section B2.1 and B2.2 in the Application. Excluding any reference to the operation of the open cycle gas turbines.	31/03/06

3. Table S4.1 amended to remove emission points, monitoring and reporting requirements as the the plant has closed down

Table S4.1 Point source emission to air- emission limits and monitoring requirements

Emission point ref. & location	Parameter	Source	Limit ^a (including unit)	Reference period	Monitoring frequency	Monitoring standard or method
-						

4. Table S4.2 amended to remove emission points W1 and W4

Table S4.2 Point source emission to water (other than sewer)- emission limits and monitoring requirements

Emission point ref. & location	Source	Parameter	Limit (incl. unit)	Reference period	Monitoring frequency	Monitoring standard or method
W2 on the site plan in schedule 2 (NGR SU 510 914) to Moor Ditch	Coal run-off water and surface water from Milton Heights and Didcot Spur Road	Total suspended solids	30 mg/litre (max)	Spot	Weekly	BS EN 872
		pH	6.5-9 (inclusive)	Spot	Weekly	SCA blue book14. ISBN 0117514284
		Oil or grease	20mg/litre (max) ¹	Spot	Weekly	SCA Blue book 77 ISBN 011751728
W3 on site plan in schedule 2 (NGR SU 515 915) to Moor Ditch	Site drainage including from the heavy fuel oil unloading area, the turbine hall and boiler house basement.	Total suspended solids	30 mg/litre (max)	Spot	Weekly	BS EN 872
		pH	6.5-9 (inclusive)	Spot	Weekly	SCA blue Book 14. ISBN 0117514284
		Oil or grease	20mg/litre (max) ¹	Spot	Weekly	SCA Blue book 77 ISBN 011751728
		BOD	20mg/litre (max)	Spot	Monthly	SCA blue book 130 ISBN 01175122120

¹ Oil and grease to be non-visible on the surface of the receiving waters in the immediate vicinity of the release points.

5. Table S4.4 amended to remove all emission limits as the plant has now shut down

Table S4.4 Annual limits (excluding start up and shut down except where otherwise stated.

Substance	Medium	Assessment year	Limit (including unit)	Release point
-----------	--------	-----------------	------------------------	---------------

-

6. Table S4.5 amended to remove all process monitoring requirements as the plant has now shut down

Table S4.5 Process monitoring requirements

Emission point reference or source or description of point of measurement	Parameter	Monitoring frequency	Monitoring standard or method
---	-----------	----------------------	-------------------------------

-

7. Table S5.1 amended to remove all reporting other than from emission points W2 and W3

Table S5.1 Reporting of monitoring data

Parameter	Emission or monitoring point/reference	Reporting period	Period begins
Emission to water sample and analysis result	W2 & W3	Monthly	01/04/13

8. Table S5.4 amended to remove all reporting forms other than form W1

Table S5.4 Reporting forms

Media/parameter	Reporting format	Starting point	Agency recipient	Date of form
Water/ emission to water sample and analysis results	Form Water 1or other form as agreed in writing by the Agency	01/04/13	SI	Permit issue

9. Condition 2.2.1 amended to reflect that the installation is now edged in green on the site plan

2.2.1. The activates shall not extend beyond the site, being the land shown edged in green on the site plan at schedule 4 to this permit.

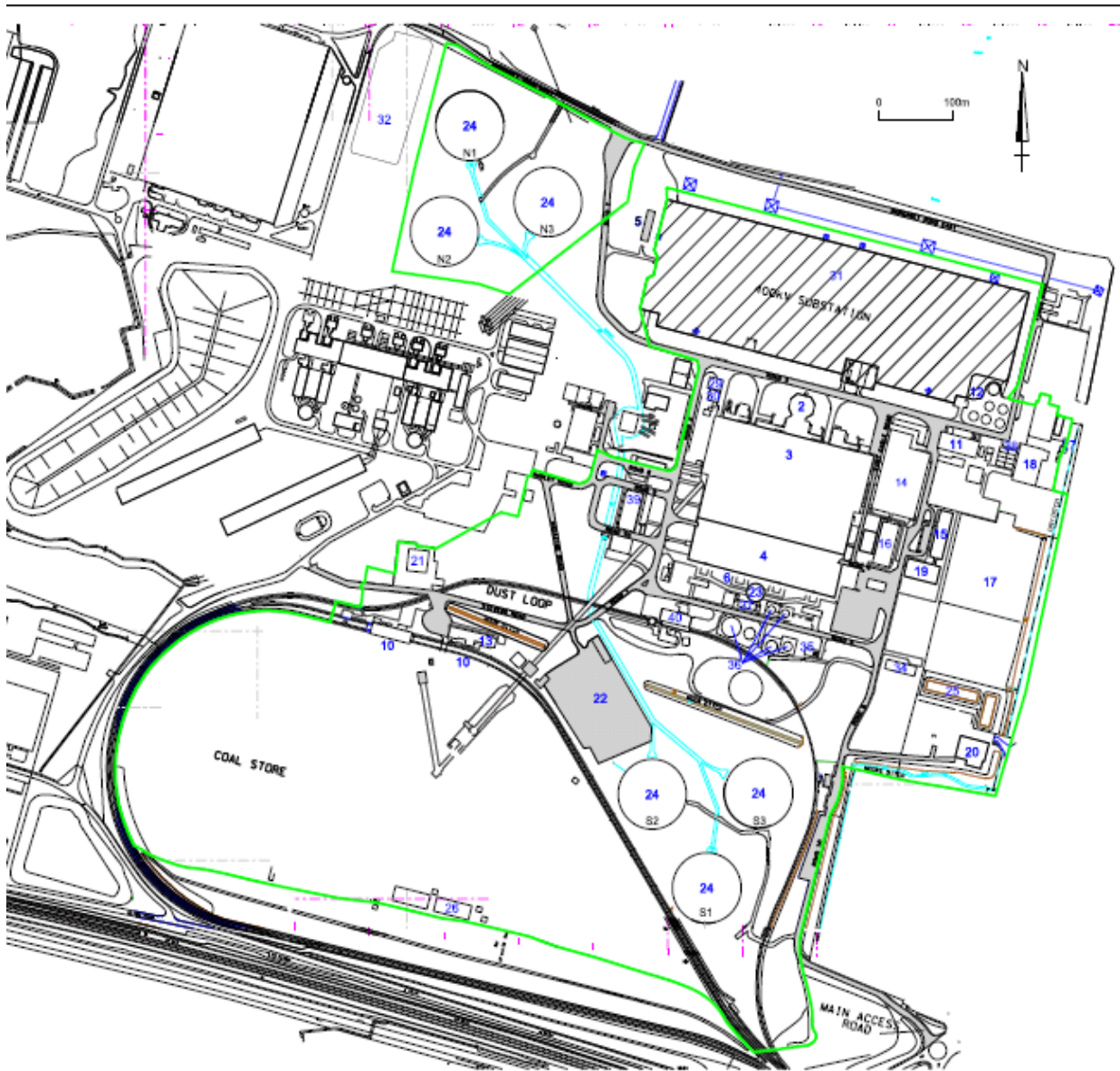
Schedule 3 – conditions to be added

10. Improvement condition IC10 added to table S1.3

Table S1.3 Improvement programme requirements

Reference	Requirement	Date
IC10	The operator should provide an updated Site Condition Report, prepared in line with Agency guidance note H5.	Within 3 months of date of issue

Schedule 4 – amended plan



Surrender notice with introductory note

The Environmental Permitting (England & Wales) Regulations 2010

RWE Generation UK plc

Didcot A Power Station

Didcot

Oxfordshire

OX11 7HA

Surrender application number

EPR/YP3030LR/S004

Permit number

EPR/YP3030LR

Didcot A Power Station

Permit number EPR/YP3030LR

Introductory note

This introductory note does not form a part of the notice.

The following notice gives notice of the surrender in part of an environmental permit.

This partial surrender has been issued in response to an application made by the Operator relating to the closure and decommissioning of the 2,000MW coal-fired Didcot A Power Station and the cessation of electricity generation at this installation since 31 March 2013. This partial surrender relates to the coal stockpile area and three cooling towers in the southern part of the site. The main generation and station area in the northern part of the site is currently undergoing separate demolition which is expected to be completed by the end of 2016. Final permit surrender for the remainder of the main site is likely to be sought after all the demolition has been completed.

The Didcot A Power Station permit area is bisected west to east by Moor Ditch which also represents the natural divide between two site managed surface water drainage systems:

- north of Moor Ditch: main station via W3
- south of Moor Ditch: coal plant via W2.

A purchase agreement has been reached for the southern section of Didcot A Power Station land holding associated with the coal plant (W2). It is this southern permitted section of the site that RWE Generation UK plc is seeking to surrender. The boundary between these two sections will be securely fenced in consultation with the new land owner to ensure distinct delineation between the surrendered and permitted parts of this site. The remaining northern permitted area of Didcot A Power Station will be enclosed by the new installation boundary and equate to around 47 hectares.

In June 2014 'RWE Npower plc' became 'RWE Generation UK plc' as the energy generation business was separated from the UK retail business in 2013. This is the only change associated with the legal registration details of the Operator and there are no other changes in the company registration details.

Any changes made as a result of the surrender in part are set out in the schedules.

The status log of a permit sets out the permitting history, including any changes to the permit reference number.

Status log of the permit		
Description	Date	Comments
Application EPR/YP3030LR/A001	Duly made 31/03/2006	
Submission of additional air dispersion modelling	05/09/2006	
Submission of site plan for permit	23/11/2006	
Permit determined EPR/YP3030LR	28/03/2007	Original permit issued to RWE npower plc.
Variation Notice KP3238XZ issued	03/03/2008	
Variation application EPR/YP3030LR/V003	Duly made 13/05/2013	
Variation determined EPR/YP3030LR	07/08/2013	Varied permit issued.

Status log of the permit		
Description	Date	Comments
Part surrender application EPR/YP3030LR/S004	Duly made 06/10/2014	Application to partially surrender the permitted area south of Moor Ditch at Didcot A Power Station. Company name change to RWE Generation UK plc.
Part surrender determined EPR/YP3030LR PAS billing ref: TP3638WU	09/01/2015	Part surrender complete.

Other existing licences/authorisations/registrations relating to this site		
Operator	Permit number	Date of issue
RWE npower (Water Abstraction)	28/39/18/59	17/05/2000

End of introductory note

Notice of surrender

The Environmental Permitting (England and Wales) Regulations 2010

The Environment Agency in exercise of its powers under regulation 25 of the Environmental Permitting (England and Wales) Regulations 2010 accepts the surrender in part of

Permit number

EPR/YP3030LR

Issued to

RWE Generation UK plc (“the operator”)

whose registered office is

Windmill Hill Business Park

Whitehill Way

Swindon

Wiltshire

SN5 6PB

company registration number 03892782

to operate a regulated facility at

Didcot A Power Station

Didcot

Oxfordshire

OX11 7HA

to the extent set out in the schedules.

This notice shall take effect from 09/01/2015.

Name	Date
A.J. Nixon	09 January 2015

Authorised on behalf of the Environment Agency

Schedule 1 – conditions to be deleted

None.

Schedule 2 – conditions to be amended

The following tables are amended, as detailed, as a result of the application made by the Operator. The scheduled activity S3.5 (B)(f) relating to Pulverised Fuel Ash (PFA) handling and storage and reference to Outlet W2 have been removed from Table S1.1 as a result of the site closure and partial surrender application.

Table S1.1 Activities		
Activity listed in Schedule 1 of the EP Regulations	Description of specified activity	Limits of specified activity
S1.1 A(1)(a)	Burning any fuel in an appliance with a rated thermal input of 50MW or more.	Receipt of coal and solid biomass at the coal mills and the supply of gas and oil to the combustion units, through to the discharge of exhaust gases from the stack, ash removal and the export of steam to the steam system.
Directly Associated Activity		
	Surface water drainage and process effluent.	Handling and storage of site drainage from rainwater collection system, settlement lagoons, sumps and drains to Moor Ditch via outlet W3 only.
	Waste handling and storage.	Waste generation, storage and monitoring to waste despatch.

Table S1.2 is amended to include the partial surrender application documents.

Table S1.2 Operating techniques		
Description	Parts	Date Received
Application EPR/YP3030LR/V003	The response to section B 2.1 and B 2.2 in the Application, Excluding any reference to the operation of the open cycle gas turbines, the coal stockpile area and three cooling towers in the southern part of the site	31/03/2006

Table S4.2 is amended to remove all reference to Outlet W2.

Table S4.2 Point Source emissions to water (other than sewer) and land – emission limits and monitoring requirements						
Emission point ref. & location	Source	Parameter	Limit (incl. unit)	Reference Period	Monitoring frequency	Monitoring standard or method
W3 on site plan in Schedule 2 to Moor Ditch NGR SU 515 915	Site drainage including from the heavy fuel oil unloading area, the turbine hall and boiler house basement	Total Suspended Solids	30mg/l (max)	Spot	Weekly	BS EN 872
		pH	6.5 to 9 (inclusive)	Spot	Weekly	SCA Blue Book 14. ISBN 0117514284
		* Oil or Grease	20mg/l (max)	Spot	Weekly	SCA Blue Book 77 ISBN 011751728
		BOD	20mg/l (max)	Spot	Weekly	SCA Blue Book 130 ISBN 01175122120

* - Oil & grease to be non-visible on the surface of the receiving waters in the immediate vicinity of the release points.

Table S5.1 is amended to remove all reference to Outlet W2. Parameters, for which reports shall be made, in accordance with conditions of this permit, are listed below.

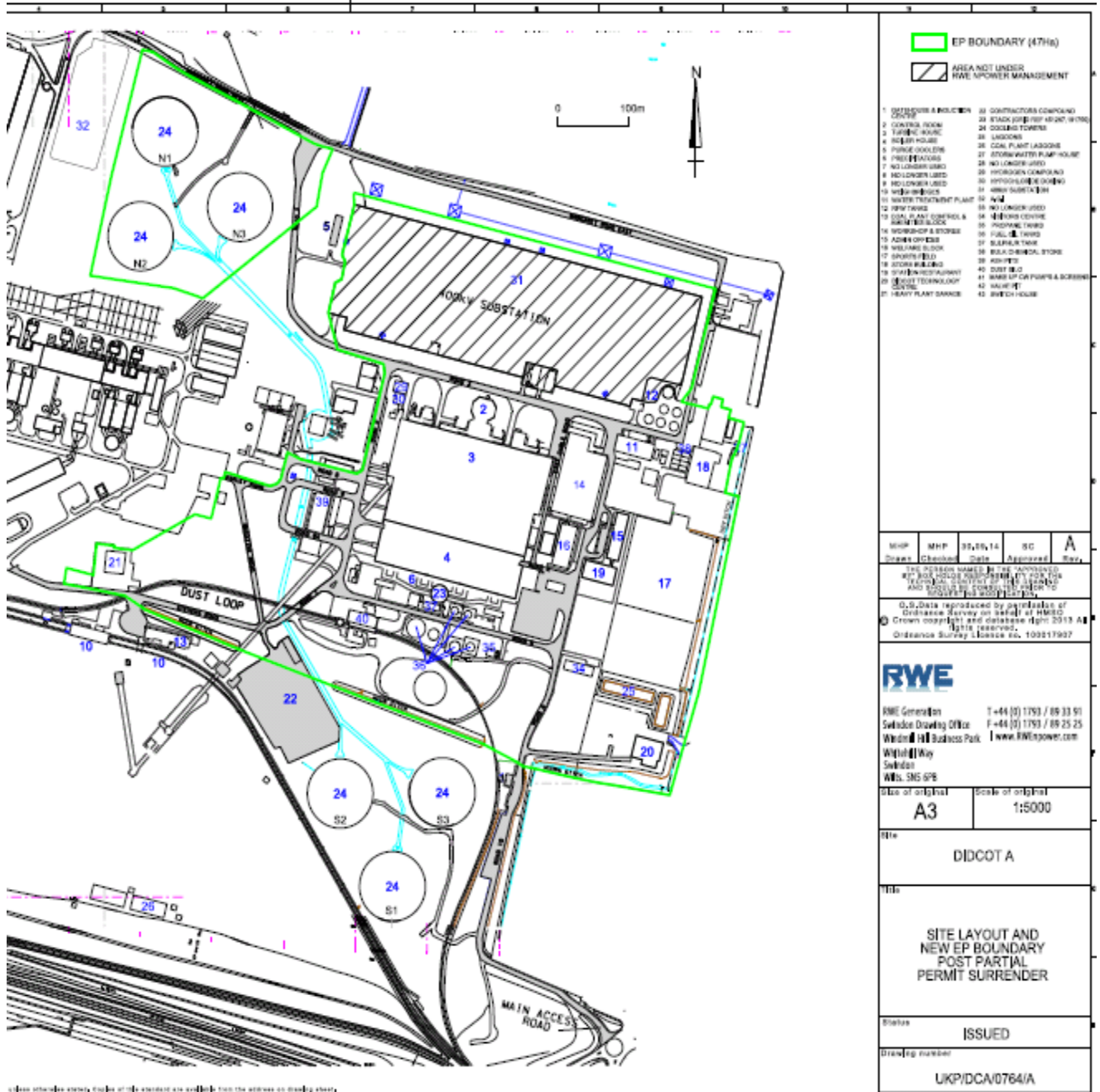
Table S5.1 Reporting of monitoring data			
Parameter	Emission or monitoring point/reference	Reporting period	Period begins
Emission to water sample and analysis result	W3	Quarterly	01 April 2013

Schedule 3 – conditions to be added

None.

Schedule 4 – amended plan

The area of the site is reduced to that shown in the attached amended plan.



END OF PERMIT