



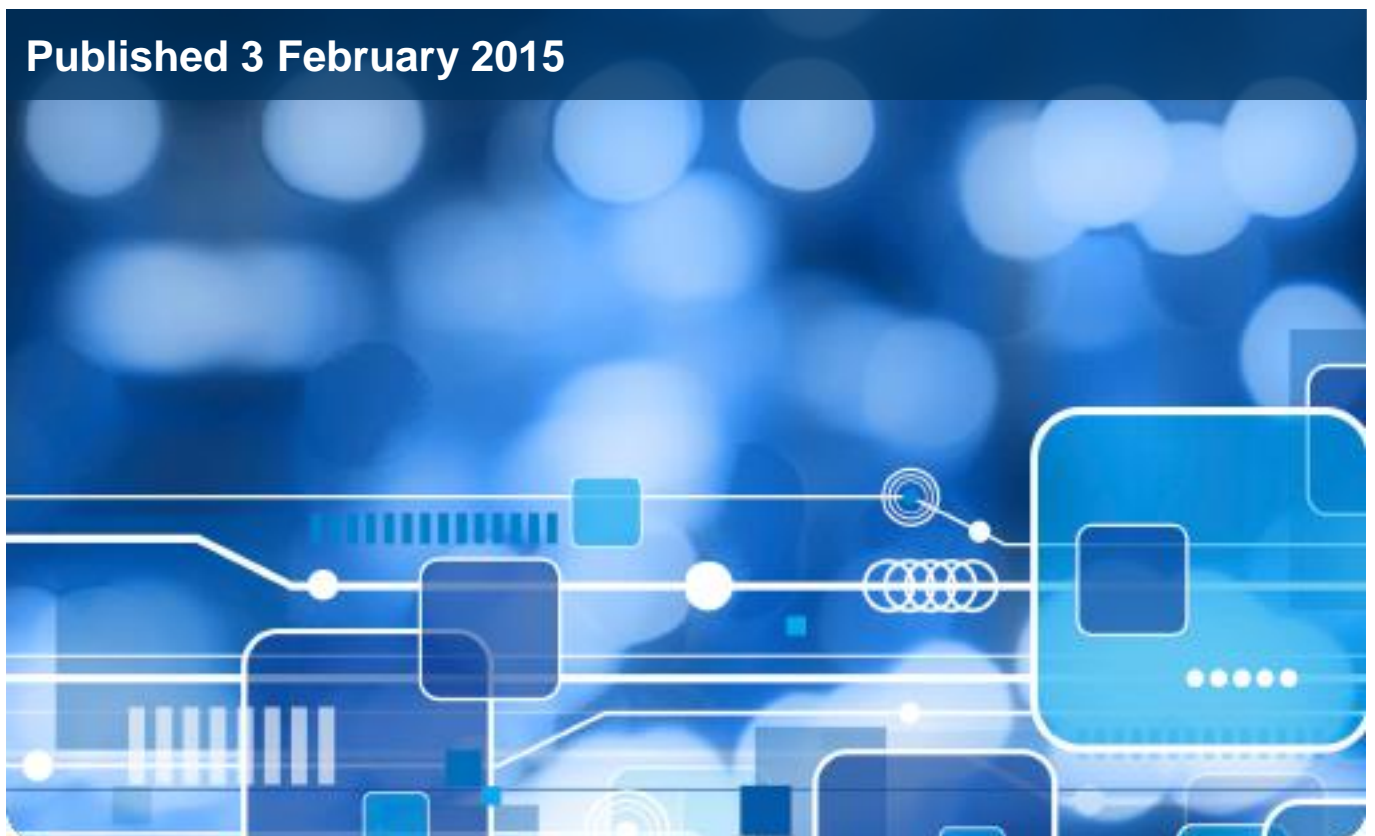
Health & Social Care
Information Centre

Mental Capacity Act 2005, Deprivation of Liberty Safeguards (England) Quarter 3 Return, 2014-15

1 October – 31 December, 2014-15

Key Findings and Data Quality Statement

Published 3 February 2015



**We are the trusted
national provider of
high-quality information,
data and IT systems for
health and social care.**

www.hscic.gov.uk

enquiries@hscic.gov.uk

 **[@hscic](https://twitter.com/hscic)**

This report may be of interest to members of the public, policy officials and other stakeholders to make local and national comparisons and to monitor the quality and effectiveness of services.

Author: Adult Social Care Statistics Team,
Health and Social Care Information Centre

Responsible statistician: Pritpal Rayat, Section Head

Version: V1.0

Date of publication: 3 February 2015

Contents

Background Information	4
Key Facts	5
Quarter 3 (1 October to 31 December 2014)	5
Update to Quarter 2 (1 July to 30 September 2014)	5
Update to Quarter 1 (1 April to 30 June 2014)	6
Summary of all quarters	8
Data Quality	10
Relevance	10
Accuracy and reliability	10
Steps to ensure accuracy	10
England coverage	11
Timeliness and punctuality	15
Accessibility and clarity	15
Coherence and comparability	16
Performance, cost and respondent burden	17
Confidentiality, transparency and security	17
Appendix A	18

Background Information

Since 2009, care homes and hospitals have had to seek authorisation from their Local Authority if they need to deprive an individual who lacks capacity of their liberty as part of their care and/or treatment. The Health and Social Care Information Centre (HSCIC) currently collects data from Councils with Social Services Responsibilities (CASSRs or councils) on Deprivation of Liberty Safeguards (DoLS) at a case level on an annual basis. This information is then published in the annual report 'Mental Capacity Act, 2005, Deprivation of Liberty Safeguards'. From 2013-14 the annual report is based on record level data, rather than in aggregate form as in previous years. The 2013-14 report was published on 3 September 2014 and can be found at the link below:

<http://www.hscic.gov.uk/pubs/mentcap1314annual>

Supreme Court judgments handed down on 19 March 2014 led to a substantial increase in the number of Deprivation of Liberty (DoL) applications received by councils. As a result of this situation, the Department of Health (DH) introduced a temporary, voluntary data collection which was approved by the DH/ADASS Outcomes and Information Development Board (OIDB) and the HSCIC Programme and Service Delivery Board. This quarterly collection enables stakeholders to monitor the scale of the Supreme Court judgements' impact on councils in a timely manner, and allows for any increase in the number of DoL applications to be quantified and evidenced.

In order to minimise the burden on councils only three data items are collected by each council on a quarterly basis including a monthly breakdown, at an aggregate level. The fields collected are the number of DoL application requests made, and of these, the number of requests granted and not granted. Data is collected on a quarterly basis, covering the period 1 April 2014 – 30 September 2015.

This release relates to quarter 3 of the collection, which covers 1 October – 31 December 2014, and also includes updated figures for quarter 1 (1 April to 30 June 2014) and quarter 2 (1 July to 30 September 2014). The data shows the position on 16 January 2015, when the returns were submitted and may need to be updated by councils in future collections as further applications are completed.

Councils have been encouraged to revise the data submitted for quarter 1 and quarter 2 during the submission period for quarter 3. This is to take account of any changes in the data since the original submissions for quarter 1 and quarter 2 (further details can be found in the Data Quality Statement).

Details for the quarter 1 report, published on 2 October 2014, can be found at <http://www.hscic.gov.uk/pubs/dols1415q1>

Details for the quarter 2 report, published on 5 November 2014 can be found at <http://www.hscic.gov.uk/pubs/dols1415q2>

Key Facts

Quarter 3 (1 October to 31 December 2014)

- 126 out of 152 councils (83 percent of all councils) submitted data for quarter 3.
- The total number of DoL applications in quarter 3 2014-15 was 33,600. Of these 9,000 (27 per cent) were granted, 2,700 (8 per cent) not granted and 21,900 (65 per cent) not yet signed off by the Supervisory Body or were withdrawn.¹
- During quarter 3 there were 12,200 DoL applications in October, 11,400 applications in November and 9,900 applications in December from 126 submitting councils.
- During quarter 3 there was an average of 79 applications per 100,000 people. The average number of applications per 100,000 population in October was 35, in November 32 and in December 28.

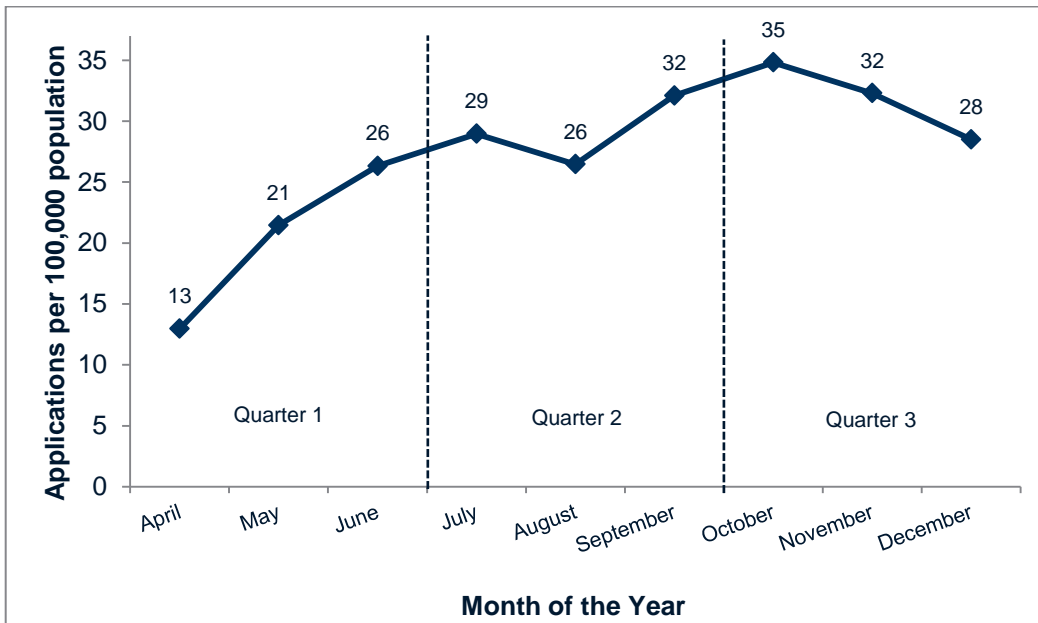
Update to Quarter 2 (1 July to 30 September 2014)

- Additional returns during the quarter 3 collection period mean that we now have 142 out of 152 councils (93 percent of all councils) having submitted data for quarter 2 (1 July – 30 September 2014), compared to the 132 councils who originally submitted data for quarter 2.
- An additional 10 councils have submitted data relating to quarter 2 and 39 councils have revised their original quarter 2 data, further details can be found in the Data Quality Statement.
- The total number of DoL applications from 142 submitting councils in quarter 2 2014-15 was 33,000, an increase of 1,800 applications compared to the 31,300 applications reported by the original 132 councils. Of these 11,600 (35 per cent) were granted, 3,200 (10 per cent) not granted and 18,200 (55 per cent) not yet signed off by the Supervisory Body or were withdrawn.^{1,2}
- During quarter 2 there were 11,400 DoL applications in July, 10,300 applications in August and 11,300 applications in September from 142 submitting councils.²
- During quarter 2 there was an average of 78 applications per 100,000 people. The average number of applications per 100,000 population in July was 29, in August 26, and in September 32.

Update to Quarter 1 (1 April to 30 June 2014)

- Additional returns during the quarter 3 collection period mean that we now have 143 out of 152 councils (94 percent of all councils) having submitted data for quarter 1 (1 April – 30 June 2014), compared to the 130 councils who originally submitted data for quarter 1.
- In total an additional 13 councils have submitted data relating to quarter 1 and 41 councils have revised their original quarter 1 data, further details can be found in the Data Quality Statement.
- The total number of DoL applications from the 143 councils for quarter 1 2014-15 was 24,100, an increase of 2,500 applications compared to the 21,600 applications reported by the original 130 councils. Of these 13,000 (54 per cent) were granted, 3,200 (13 per cent) not granted and 7,900 (33 per cent) not yet signed off by the Supervisory Body or were withdrawn.^{1,2,3}
- During quarter 1 there were 4,900 DoL applications in April, 8,500 applications in May and 10,600 applications in June.^{2,3}
- During quarter 1 there was an average of 57 applications per 100,000 people. The average number of applications per 100,000 population in April was 13, this increased to 21 applications per 100,000 in May and 26 in June.
- Figure 1 shows the number of applications for each month per 100,000 population. Table 1 shows the number of applications and outcome for each quarter. Figure 2 shows the percentage of applications that were granted, not granted or not yet signed off or withdrawn for each quarter.

Figure 1: Average number of applications each month per 100,000 population for April to December 2014



Data Source: DoLS Quarterly collection 2014-15

1. Rates per 100,000 population are rounded to the nearest whole number

2. Dashed lines indicate different quarterly collections. Not all councils submitted data for each quarter; 143 councils submitted data for quarter 1, 142 councils for quarter 2 and 126 councils for quarter 3.

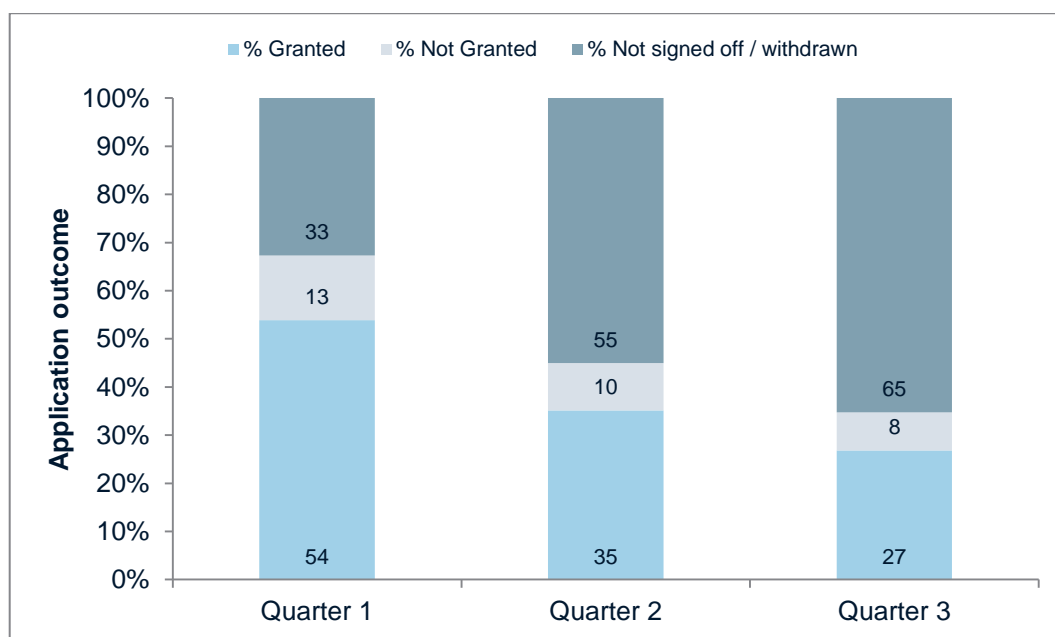
Table 1: Number of applications and outcome for each quarter (April to December 2014)

	Number of Applications	Number Granted	% Granted	Number Not Granted	% Not Granted	Number Not Signed Off or Withdrawn	% Not signed Off or Withdrawn
Quarter 1	24,100	13,000	54	3,200	13	7,900	33
Quarter 2	33,000	11,600	35	3,200	10	18,200	55
Quarter 3	33,600	9,000	27	2,700	8	21,900	65
Total	90,600	33,600	37	9,100	10	47,900	53

Data Source: DoLS Quarterly collection 2014-15

1. Percentages may not total 100 due to rounding.
2. Numbers are rounded to the nearest 100
3. Not all councils submitted data for each quarter; 143 councils submitted data for quarter 1, 142 councils for quarter 2 and 126 councils for quarter 3.

Figure 2: Application outcome for each quarter (April- December 2014)



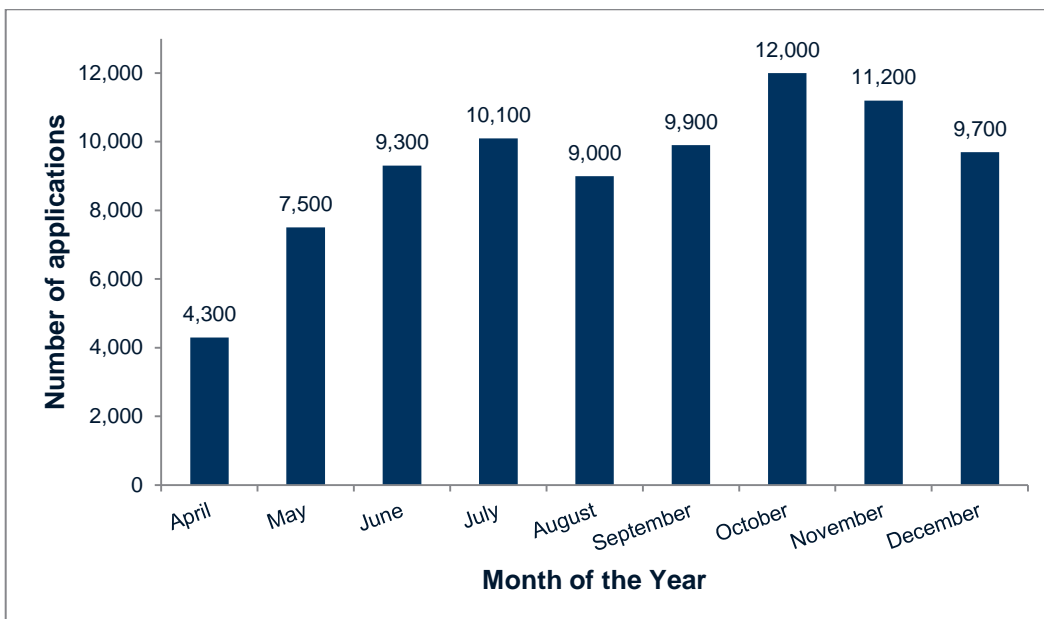
Data Source: DoLS Quarterly collection 2014-15

1. Percentages may not total 100 due to rounding.
2. Not all councils submitted data for each quarter; 143 councils submitted data for quarter 1, 142 councils for quarter 2 and 126 councils for quarter 3. All 152 councils submitted data for 2013-14. Councils were able to update quarter 1 and quarter 2 to take account of any changes in the data since the original submissions for quarter 1 and quarter 2.

Summary of all quarters

- 122 out of 152 councils (80 percent of all councils) submitted data for all three quarters, covering the period 1 April – 31 December 2014.
- For the 122 councils there were 21,200 applications in quarter 1, 29,000 applications in quarter 2 and 32,900 in quarter 3.
- There were 7,900 more applications in quarter 2 compared to quarter 1, representing a 37 per cent increase in the number of applications between quarter 1 and 2. In quarter 3 there were 3,900 more applications compared to quarter 2, representing a 13 per cent increase in the number of applications between quarter 2 and 3. Overall there was a 56 per cent increase in the number of applications (11,700) between quarter 1 and quarter 3.
- April had the lowest number of applications (4,300) and October the largest number (12,000). Figure 3 illustrates the number of applications per month for April to December 2014 for the 122 councils.
- Between April and December 2014 (9 months) there were 83,100 DoL applications, of which 36 per cent were granted, 10 per cent not granted and 54 per cent were not yet signed off by the Supervisory Body or were withdrawn.¹ Table 2 shows the number of applications and the percentage of applications that were granted, not granted or were not yet signed off by the Supervisory Body or were withdrawn for each quarter.
- In 2013-14 (12 months) the total number of applications for these 122 councils was 11,300 of which 56 per cent (6,400) were granted, 41 per cent (4,600) were not granted and 3 per cent (300) were not yet signed off by the Supervisory Body or were withdrawn⁴.

Figure 3: Number of applications per month for 122 councils that submitted data for all three quarters



Data Source: DoLS Quarterly collection 2014-15

1. Numbers are rounded to the nearest 100.

Table 2: Number of applications and outcome for 122 councils that submitted data for all three quarters (1 April to 31 December 2014)

	Number of Applications	Number Granted	% Granted	Number Not Granted	% Not Granted	Number Not Signed Off or Withdrawn	% Not signed Off or Withdrawn
Quarter 1	21,200	11,100	52	2,900	14	7,200	34
Quarter 2	29,000	10,000	35	2,900	10	16,100	55
Quarter 3	32,900	8,900	27	2,600	8	21,400	65
Total	83100	30,000	36	8,400	10	44,700	54

Data Source: DoLS Quarterly collection 2014-15

1. Numbers are rounded to the nearest 100.
2. Percentages may not total 100 due to rounding.

¹The total number of DoL applications does not equate to the total number of DoL applications granted and not granted as some applications, as of 16 January 2015, were not yet signed off by the Supervisory Body or were withdrawn.

²These include revised figures submitted in the quarter 3 collection

³These include revised figures submitted in the quarter 2 collection

⁴This relates to those applications that were received during the 2013-14 reporting year and were granted, not granted or were not yet signed off by the Supervisory Body or were withdrawn as of 31 March 2014.

Numbers are rounded to the nearest 100.

Percentages may not total 100 due to rounding.

Data Quality

Relevance

This dimension covers the degree to which the statistical product meets user needs in both coverage and content.

Since 2009, care homes and hospitals have had to seek authorisation from their Local Authority if they need to deprive an individual who lacks capacity of their liberty as part of their care and/or treatment. Supreme Court judgments handed down on 19 March 2014 led to a substantial increase in the number of Deprivation of Liberty (DoL) applications received by councils. As a result of this situation, the Department of Health introduced a temporary, voluntary quarterly data collection to cover the period 1 April 2014 to 30 September 2015. This quarterly collection enables stakeholders to monitor the scale of the Supreme Court judgements' impact on councils in a timely manner, and allows for any increase in the number of DoL applications to be quantified and evidenced.

The background information, key facts and data files contain the following types of information about DoLS from participating councils in England:

- Background to the DoLS quarterly return
- The total number of DoL applications and outcome in quarter 3 2014-15
- The total number of DoL applications and outcome in quarter 1 2014-15 (amended in quarter 2 and/or quarter 3)
- The total number of DoL applications and outcome in quarter 2 2014-15 (amended in quarter 3)
- The total number of DoL applications and outcome in quarter 1, quarter 2 and quarter 3 2014-15 for councils which submitted data for all three quarters.
- The percentage of participating councils by region for quarter 1, quarter 2 and quarter 3.
- The percentage of participating councils by type of Local Authority for quarter 1, quarter 2 and quarter 3.
- A list of councils that have not submitted data for each quarter.
- The total number of DoL applications, including those granted and not granted for the previous year, 2013-14.

Information in this statement will be of interest to organisations monitoring DoL applications in England, such as the Department of Health, the Care Quality Commission, hospitals and care homes. It may also be useful to mental health charities, individuals being deprived of their liberty and their families who are interested in more information about DoLS and the extent of its use.

Accuracy and reliability

This dimension looks at factors affecting the accuracy and completeness of the data.

Steps to ensure accuracy

In Omnibus, the total number of granted and not granted applications was automatically calculated to ensure accuracy. Following this, the HSCIC ran a number of validation checks on the data submissions sent via Omnibus. The validations checked the calculated total was less than or equal to the number of applications reported.

England coverage

The DoLS quarterly collection is a voluntary collection, all 152 CASSRs in England were invited to submit a return. Councils have been encouraged to revise the data submitted for quarter 1 and quarter 2 during the submission period for quarter 3. This is to take account of any changes in the data since the original submissions for quarter 1 and quarter 2. The sections below outline how many councils submitted data for each quarter and any revisions made.

Quarter 3 (1 October to 31 December 2014)

Of the 152 councils in England, 126 submitted a timely return for quarter 3. Of the remaining 26 councils that didn't submit quarter 3 data, the main reasons for this were due to heavy workloads or relevant DoLS contacts being absent during the submission time. See Appendix A for those councils that have not submitted a return.

Updates to quarter 1 (1 April to 30 June)

130 of the 152 councils in England submitted a return in the quarter 1 submission period. During the submission period for quarter 2, eleven councils which did not initially submit data for quarter 1 added a return, and a further two councils added a return during the quarter 3 submission period. This gives a total of 143 submitting councils for quarter 1 (See Appendix A for those councils that have not submitted a return). Table 1A shows the additional 13 councils that submitted quarter 1 data during either the quarter 2 or quarter 3 submission periods. In total there were 2,280 applications for quarter 1 from these 13 councils.

Table 1A: Quarter 1 additional submissions in Quarter 2 and Quarter 3

LA Code	LA Name	Number of Applications	Number Granted	Number Not Granted	When Submitted
102	Cumbria	97	45	47	Quarter 2
212	Leeds	257	184	52	Quarter 2
218	North Yorkshire	249	67	7	Quarter 2
304	Bolton	20	Quarter 2
307	Oldham	48	Quarter 2
327	Cheshire West and Chester	472	114	12	Quarter 2
617	Slough	128	95	18	Quarter 2
710	Southwark	48	29	8	Quarter 2
714	City of London	0	0	0	Quarter 2
902	Cornwall	835	75	53	Quarter 2
914	Torbay	35	24	..	Quarter 2
108	North Tyneside	38	Quarter 3
727	Hillingdon	53	Quarter 3
	TOTAL	2,280	783	208	

Numbers lower than 6 have been suppressed to avoid the risk of disclosure.

Where small numbers have been suppressed, this is indicated by ..

If either the Granted or Not Granted columns were less than 6, where appropriate, both columns have been suppressed to prevent calculation of the missing value.

Councils 218 North Yorkshire and 304 Bolton also made amendments to their Quarter 1 data during the Quarter 3 submission period (see Annex B).

In total, 41 councils have made amendments to quarter 1 data; 25 councils revised their quarter 1 data during the quarter 2 submission period, and 33 councils during the quarter 3 submission period:

- 30 councils amended their original quarter 1 application data, with 21 increasing their number of applications and 9 reducing the number, accounting for an overall increase of 209 applications.
- 38 councils amended their original Q1 Granted data, with 32 increasing the granted number and 6 reducing it, accounting for an overall increase of 1085 granted applications.
- 30 councils amended their original Q1 Not Granted data, with 24 increasing the number and 6 reducing it, accounting for an overall increase of 359 Not Granted applications.

The number of applications for quarter 1 increased by 2,311 from quarter 1 to quarter 2, with a further increase of 178 in quarter 3 (an overall increase of 2,489 applications). For Granted applications the increase was 959 in quarter 2 and 909 in quarter 3 (1,868 overall) and for Not Granted applications it was 301 in quarter 2 and 266 in quarter 3 (567 overall).

Table 2A shows the 41 councils which made amendments to quarter 1 data during either quarter 2 or quarter 3. Annex B contains the revisions or additions made to quarter 1 data.

Table 2A Quarter 1 amendments in Quarter 2 and Quarter 3

LA Code	LA Name	Revised during Quarter 2	Revised during Quarter 3
107	Newcastle upon Tyne		Yes
110	Sunderland		Yes
116	Durham	Yes	Yes
204	Barnsley		Yes
209	Bradford	Yes	Yes
214	East Riding of Yorkshire	Yes	
216	North East Lincolnshire	Yes	Yes
218	North Yorkshire		Yes
304	Bolton		Yes
316	Liverpool	Yes	
322	Warrington		Yes
404	Warwickshire		Yes
406	Birmingham	Yes	Yes
408	Dudley		Yes
413	Staffordshire	Yes	Yes
416	Worcestershire	Yes	Yes
417	Shropshire	Yes	Yes
503	Lincolnshire		Yes
504	Northamptonshire		Yes
506	Derbyshire	Yes	Yes
511	Nottinghamshire		Yes
606	Hertfordshire	Yes	Yes
609	Suffolk	Yes	
615	West Berkshire		Yes

Mental Capacity Act 2005, Deprivation of Liberty Safeguards (England) Quarter 3 Return, 2014-15

620	Essex	Yes	Yes
623	Cambridgeshire	Yes	
624	Peterborough	Yes	
704	Hackney	Yes	Yes
717	Barnet		Yes
725	Harrow		Yes
805	Surrey		Yes
810	Bournemouth	Yes	Yes
811	Poole	Yes	
812	Hampshire	Yes	Yes
815	East Sussex	Yes	Yes
817	Wiltshire	Yes	Yes
820	Kent	Yes	
821	Medway Towns	Yes	Yes
909	Bristol	Yes	Yes
911	South Gloucestershire	Yes	
912	Devon		Yes

Updates to quarter 2 (1 July to 30 September)

132 of the 152 councils in England submitted a return in the quarter 2 submission period. During the submission period for quarter 3, ten councils which did not initially submit data for quarter 2 added a return. This gives a total of 142 submitting councils for quarter 2 (See Appendix A for those councils that have not submitted a return). Table 4A shows the additional 10 councils that submitted quarter 2 data during the quarter 3 submission period. In total there were 1,232 applications for quarter 2 from these 10 councils.

Table 4A Quarter 2 additional submissions in Quarter 3

LA Code	LA Name	Number of Applications	Number Granted	Number Not Granted	When submitted
108	North Tyneside	129	115	9	Quarter 3
317	Sefton	132	13	35	Quarter 3
702	Camden	105	90	15	Quarter 3
703	Greenwich	82	52	12	Quarter 3
705	Hammersmith and Fulham	48	23	..	Quarter 3
707	Kensington and Chelsea	58	15	8	Quarter 3
713	Westminster	61	24	12	Quarter 3
721	Croydon	100	43	17	Quarter 3
727	Hillingdon	79	Quarter 3
807	West Sussex	438	151	33	Quarter 3
	TOTAL	1,232	601	148	

Numbers lower than 6 have been suppressed to avoid the risk of disclosure.

Where small numbers have been suppressed, this is indicated by ..

If either the Granted or Not Granted columns were less than 6, where appropriate, both columns have been suppressed to prevent calculation of the missing value.

During the quarter 3 submission period thirty nine councils revised their quarter 2 data:

- 27 councils amended their existing quarter 2 application data, with 24 increasing their number of applications and 3 reducing the number, accounting for an overall increase of 523 applications.
- 39 councils amended their existing Q2 Granted data, with all 39 increasing the granted number, accounting for an overall increase of 1,562 granted applications.
- 34 councils amended their existing Q2 Not Granted data, with 32 increasing the number and 2 reducing it, accounting for an overall increase of 713 Not Granted applications.

Table 5A shows the councils which made amendments to quarter 2 data during the quarter 3 submission period. Annex B contains the revisions or additions made to quarter 2 data (49 councils).

Table 5A Quarter 2 amendments in Quarter 3

LA Code	LA Name	Revised during Quarter 3
107	Newcastle upon Tyne	Yes
110	Sunderland	Yes
116	Durham	Yes
204	Barnsley	Yes
209	Bradford	Yes
216	North East Lincolnshire	Yes
218	North Yorkshire	Yes
304	Bolton	Yes
322	Warrington	Yes
325	Blackpool	Yes
404	Warwickshire	Yes
406	Birmingham	Yes
408	Dudley	Yes
413	Staffordshire	Yes
416	Worcestershire	Yes
417	Shropshire	Yes
503	Lincolnshire	Yes
504	Northamptonshire	Yes
506	Derbyshire	Yes
511	Nottinghamshire	Yes
606	Hertfordshire	Yes
614	Bracknell Forest	Yes
615	West Berkshire	Yes
620	Essex	Yes
623	Cambridgeshire	Yes
704	Hackney	Yes
709	Lewisham	Yes
711	Tower Hamlets	Yes
716	Barking and Dagenham	Yes

717	Barnet	Yes
725	Harrow	Yes
805	Surrey	Yes
810	Bournemouth	Yes
811	Poole	Yes
812	Hampshire	Yes
815	East Sussex	Yes
817	Wiltshire	Yes
821	Medway	Yes
906	Isles of Scilly	Yes

Appendix A shows the councils which have not made a submission for any quarter in any of the three submission periods.

Timeliness and punctuality

Timeliness refers to the time gap between publication and the reporting period. Punctuality refers to the gap between planned and actual publication dates.

This statement contains data for the first, second and third quarters in the 2014-15 reporting year, which covers the period 1 April to 30 June 2014, 1 July to 30 September 2014 and 1 October to 31 December 2014. This statement was published on 3 February 2015. Table 6A shows the Report period, Collection period and Publication dates for the three quarters collected during 2014-15.

Table 6A DoLS Quarterly Timeline

	Report period	Collection period	Publication date
Quarter 1	1 April - 30 June 2014	1 - 12 September 2014	02 October 2014
Quarter 2	1 July - 30 September 2014	1 - 14 October 2014	05 November 2014
Quarter 3	1 October - 31 December 2014	5 - 16 January 2015	03 February 2015
Quarter 4	1 January – 31 March 2015	1 April – 10 April 2015	12 May 2015

Collection of quarter 3 data opened on the 5th January 2015 and remained open for two weeks. Councils could submit quarter 3 data and submit or amend quarter 1 and/or quarter 2 data during this time. The collection closed on 16th January 2015, with no submissions being accepted after this date.

The statement was published on the planned date and is therefore deemed to be punctual.

Accessibility and clarity

Accessibility is the ease with which users are able to access the data, also reflecting the format in which the data are available and the availability of supporting information. Clarity refers to the quality and sufficiency of the metadata, illustrations and accompanying advice.

Accessibility

The background information and key facts are available from the HSCIC website at the below address:

<http://www.hscic.gov.uk/pubs/dols1415q3>

Annex A (data file) and Annex B (revisions and additions) are also available as excel files from the same address, along with a .csv file of the quarterly data.

Reuse of our data is subject to conditions outlined here:

<http://www.hscic.gov.uk/data-protection/terms-and-conditions>

Clarity

A list of the data items collected in quarter 1, 2 and 3, together with their definitions, can be found in the guidance document available at the link below. This can be used to see what data has been collected from councils:

<http://www.hscic.gov.uk/socialcarecollections2015>

Coherence and comparability

Coherence is the degree to which data which have been derived from different sources or methods but refer to the same topic are similar. Comparability is the degree to which data can be compared over time and domain.

Coherence

Data has been taken from the Mental Capacity Act 2005, Deprivation of Liberty Safeguards (England) Annual Report 2013-14¹. The annual report was based on the number of DoL applications completed within 2013-14. However for the purposes of comparison with the quarterly 2014-15 data, analysis has been focussed on the number of DoL applications received in the 2013-14 reporting year, and the number of those applications that were granted, not granted or not yet signed off or withdrawn as of 31st March 2014, therefore numbers will vary slightly to those reported in the 2013-14 Annual report¹.

Comparability

As this is a new collection of quarterly data, currently there are no other sources collecting the same information with which this analysis can be compared.

Following the collection of quarter 3 data, comparisons have been made with the quarter 1 and quarter 2 data. Data for quarter 1 and quarter 2 contained in the quarter 3 publication is more up to date than previously published due to amendments made during the January 2015 collection period.

(Quarter 1 report published on 2 October - <http://www.hscic.gov.uk/pubs/dols1415q1>)

(Quarter 2 report published on 5 November - <http://www.hscic.gov.uk/pubs/dols1415q2>)

Other sources of data where the impact of the Supreme Court judgement is assessed can be found via the links below:

Association of Directors of Adult Social Services (ADASS) survey in June 2014 on the impact of the Supreme Court ruling in June 2014:

<http://www.adass.org.uk/number-of-dols-referrals-rise-tenfold-since-supreme-court-ruling-jun-14/>

¹ <http://www.hscic.gov.uk/pubs/mentcap1314annual>

Community Care on-line journal comments:

<http://www.communitycare.co.uk/2014/10/01/50-deprivation-liberty-safeguards-cases-breaching-legal-timescales/>

Performance, cost and respondent burden

This dimension describes the effectiveness, efficiency and economy of the statistical output.

Submission of quarterly DoLS data is voluntary for all 152 councils in England. Councils are requested to record summary figures about applications for each month within the quarter and submit these data to the HSCIC at the end of the quarter. Data is submitted via Omnibus, a secure web based data collection system.

Confidentiality, transparency and security

The procedures and policy used to ensure sound confidentiality, security and transparent practices.

All statistics are subject to a standard HSCIC risk assessment prior to issue. The risk assessment considers the sensitivity of the data and whether reporting products might disclose information about specific individuals. Methods of disclosure control are discussed and the most appropriate methods implemented.

The HSCIC aims to be transparent in all its activities. Any issues with the quality of the quarterly DoLS data are documented in the **Accuracy and reliability** section of this document.

The DoLS data is returned to the HSCIC through a secure data collection system called Omnibus. The submitted data is downloaded from Omnibus and stored on a secure network with restricted access folders. Only a limited number of analysts can access the DoLS folders.

Please see links below for more information about related HSCIC policies.

Statistical Governance Policy (see link in 'user documents' on right hand side of page):

<http://www.hscic.gov.uk/pubs/calendar>

Freedom of Information Process:

<http://www.hscic.gov.uk/foi>

Data Access and Information Sharing Policy:

<http://portal/Documents/Policies/DAIS%20Policy%20Final%204.0%20updated.pdf>

Privacy and data Protection:

<http://www.hscic.gov.uk/privacy>

Appendix A

Councils which have not made a data submission for each quarter

LA code	LA name	Quarter1	Quarter 2	Quarter 3
110	Sunderland			No
111	Hartlepool			No
206	Rotherham			No
207	Sheffield			No
212	Leeds			No
306	Manchester	No	No	No
307	Oldham			No
311	Tameside	No		
315	Knowsley	No	No	No
317	Sefton			No
319	Wirral		No	No
409	Sandwell		No	No
410	Solihull			No
411	Walsall	No	No	No
412	Wolverhampton			No
414	Stoke-on-Trent	No	No	No
508	Leicestershire			No
510	Rutland			No
609	Suffolk			No
616	Reading	No	No	No
621	Southend-on-Sea	No	No	No
718	Bexley		No	
719	Brent	No	No	No
720	Bromley			No
722	Ealing	No		No
726	Havering			No
733	Richmond upon Thames			No
803	Isle of Wight			No

**Published by the Health and Social Care Information Centre
Part of the Government Statistical Service**

Responsible Statistician

Pritpal Rayat, Section Head

ISBN 978-1-78386-310-5

This publication may be requested in large print or other formats.

For further information

www.hscic.gov.uk

0300 303 5678

enquiries@hscic.gov.uk

Copyright © 2015 Health and Social Care Information Centre. All rights reserved.

This work remains the sole and exclusive property of the Health and Social Care Information Centre and may only be reproduced where there is explicit reference to the ownership of the Health and Social Care Information Centre.

This work may be re-used by NHS and government organisations without permission.