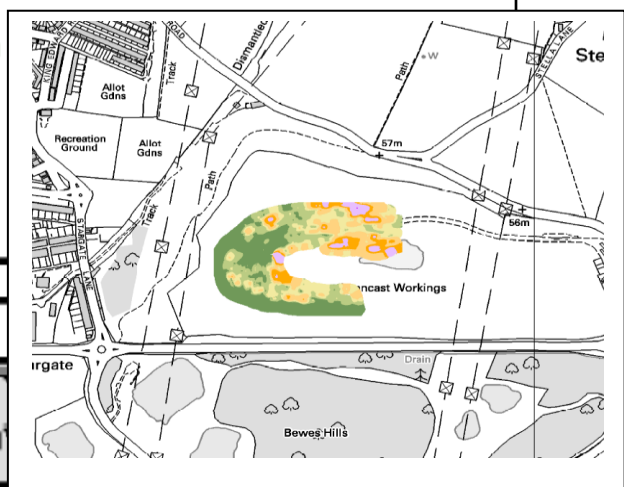
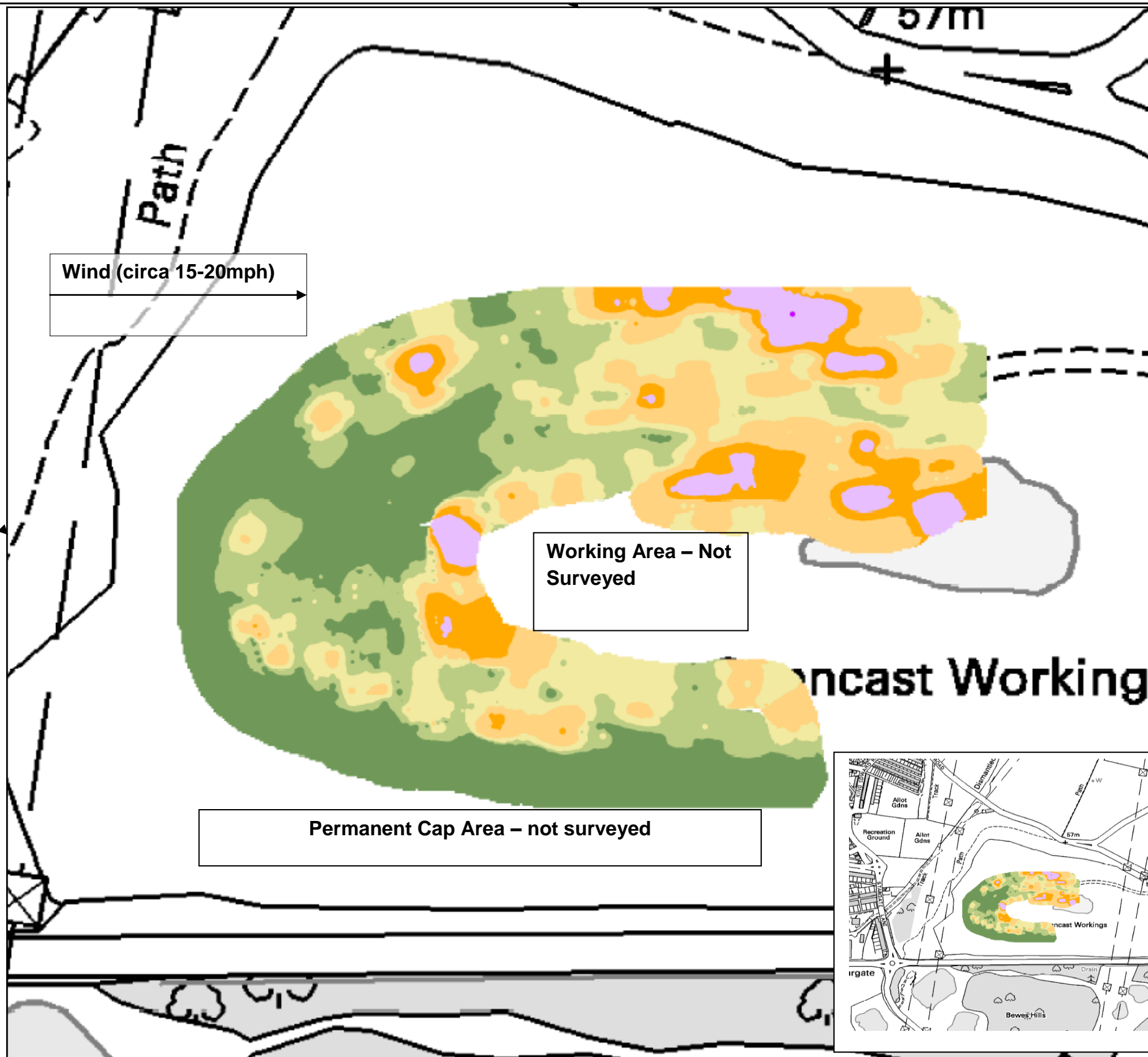


Path Head Landfill Site – Cell3

CH4 Surface Emissions Survey

03 May 2016



Key

CH4 Concentration

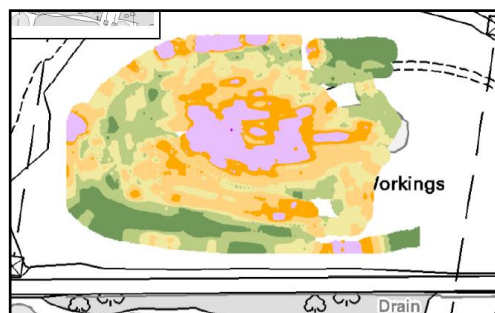
- <5ppm
- 5-10ppm
- 10-20ppm
- 20-50ppm
- 50-100ppm
- 100-1000ppm
- 1000ppm-1%v/v
- >1%v/v

Commentary:

The UK background CH4 concentration is typically 1.8ppm.

Cell 3 is an operational cell with both permanent deep gas extraction infrastructure and temporary horizontal collectors in place. The south and south western sections of the cell are permanently capped

This survey has been undertaken as a follow-up to that previously completed in October 2015 (see below), following installation of a temporary clay cap and additional gas extraction wells.



Generally emissions across the cell were lower, particularly in the western plateau of the cell. Some elevated emission still remains across the north-eastern section of the cell.

Notes:

Methane concentrations were measured using a TDL-500 tuneable diode laser and were geo-logged every 3 seconds. The contour plot was produced in ArcMap® using an Inverse Distance Weighted (IDW) interpolation.

Point coordinates were transposed using a WGS84 to OSGB36 transformation.