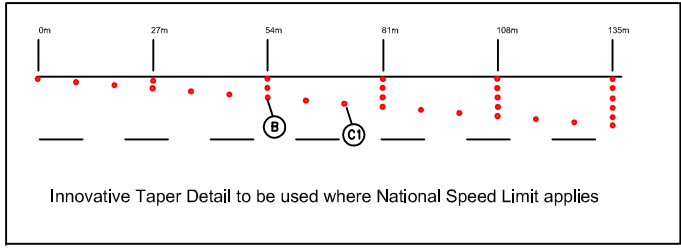
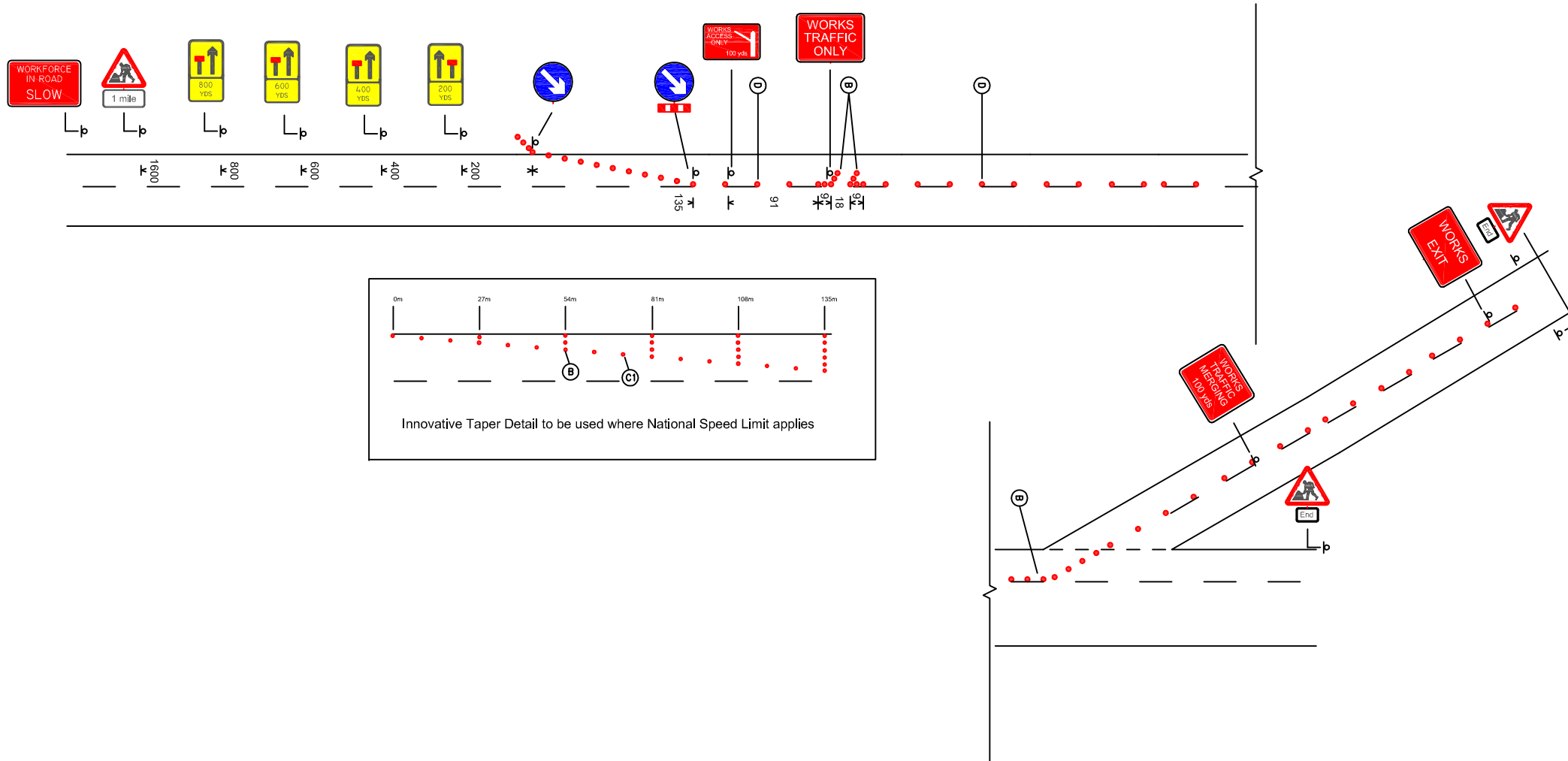
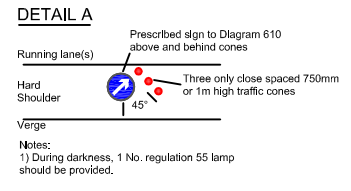


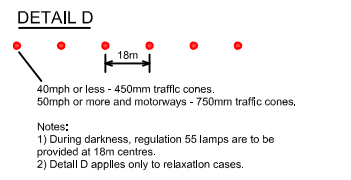
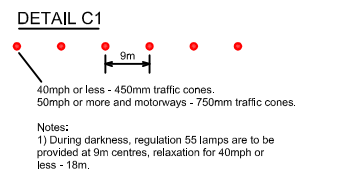
Work Area 178/2A to 180/5J



- KEY**
- Traffic sign
 - Traffic cone/cylinder
 - Traffic signals to Diagram 3000.1



- DETAIL B**
- 40mph or less - 450mm traffic cones, spacing 1.5m.
 - 50mph or more - 750mm traffic cones, spacing 1.5m.
 - Motorways and NSL dual with hardshoulders - 750mm traffic cones, spacing 1.5m, relaxation 3m.
- Notes:
1) During darkness, regulation 55 lamps should be provided at 9m centres, relaxation for 40mph or less - 18m.
2) 45° tapers have 1.5m spacing, no relaxations.
3) On motorways and NSL dual with hardshoulders use 1m cones for lead tapers and facing wall of lane changes.



REV	DESCRIPTION	BY	DATE
-----	-------------	----	------

Lane 1 closure on A14 and
Lane 1 closure on exit slip J53 EB



Hereward Rise
Halesowen
West Midlands
B62 8AN
Tel: 0121 550 3445
Fax: 0121 550 4640

Drawn by L Tipper	Date 30/9/15	Project No XXX	Dwg No 2Lhs L1
Checked by PM	Date XXX	Plot date XXX	Scale NTS