

# Royal Navy and Royal Marines Monthly Personnel Situation Report for 1 November 2016



Ministry of Defence

(Published 8 December 2016)

## Statistical Release

Issued by:  
Defence Statistics

The statistician responsible for this report is the Defence Statistics (Navy) Head of Branch.

Email:  
[Defstrat-stat-navy-hd@mod.uk](mailto:Defstrat-stat-navy-hd@mod.uk)

If you would like to be informed by email of updates to this publication please subscribe via email:  
[Defstrat-stat-Navy@mod.uk](mailto:Defstrat-stat-Navy@mod.uk)

We welcome feedback, comments and queries on this report. Please contact us on the above email

The Background Quality Report for this publication can be found at:  
[Background Quality Report](#)

## Links to other publications which may be of interest

[UK Armed Forces Monthly Personnel Statistics](#) This publication provides information on the number of Military Personnel in (defined as the strength), joining (intake) and leaving (outflow) the UK Armed Forces. Detail is provided for both the Full-time Armed Forces and Reserves

[Royal Navy Quarterly Pocket Brief](#) This quarterly publication contains information on strengths, requirements, intakes and outflows from the Royal Navy service

This publication is a monthly report providing information on the number of Royal Navy and Royal Marine personnel joining and leaving the Regular service. It also shows the strengths of the Regular and Full Time Reserves Service (FTRS) Royal Navy and Royal Marines by rank and Length of Service. This publication is complemented by the [Royal Navy Quarterly Pocket Brief](#) which also shows breakdown of ethnicity in the RN/RM, Army and RAF.

**Information about some of the tables used in this report** The Royal Marine Aircrew-men are included with Warfare (Air); Royal Marine Medical Assistants are included with Medical. Where an RM/RN total split is given they are included with the RM. Warfare Officers include Royal Marine pilots. From August 2015 Communication and Information Specialists are now counted towards Engineer Technician (Weapon Engineer) having moved from Warfare branch. This has implications for tables 1a, 9b, 10b and 12b. FTRS are only included in table 1, unless otherwise stated.

**Voluntary Outflow (VO)** Voluntary Outflow exit rates are calculated using the 12 month total VO divided by the average strength, which is calculated using a 12 month centered rolling average. This centres the data and gets a midpoint month. 13 months of strengths are used, starting mid-way through one month and ending mid-way through the same month a year later. This way the moving average VO rate falls on a specific month rather than being in between months.

## **Key points for November 2016**

### **Strengths**

- The trained regular strength of the RN/RM including FTRS Regulars was 29,440 giving a deficit of 2.4% against the liability as shown in Table 1a.
- The trained regular strength excluding FTRS regulars was 29,130, a decrease of 70 from the previous month, also shown in Table 1a.

### **Outflows**

- The total outflow from the trained regular strength excluding FTRS, was 2,430 in the 12 months to 1 November 2016, made up of 2,060 Ratings and 370 Officers as shown in Tables 9a and 9b.

# Royal Navy and Royal Marines Monthly Personnel Situation Report - Contents List

[Summary of NATO Ranks](#)

[Glossary of Terms and Definitions used within this publication](#)

[Revisions](#)

[Data Sources](#)

[Data Issues - Strengths and Weaknesses](#)

[Rounding Policy](#)

[Liability](#)

[Feedback](#)

## **Current and Historic Trained Strengths**

- 1a. Trained strengths and liability
- 1b. Summary of RN/RM strengths by service and arm
- 1c. Graph of historic Trained Regular strengths and liability by Quarter
- 1d. Graph of recent Trained Regular strengths and liability by Month

## **Trained strengths by Branch, Specialisation and Arm**

- 2a. Trained Regular Officer strengths and liability by Branch, Specialisation and Arm
- 2b. Trained Regular Ratings strengths and liability by Branch, Specialisation and Arm
- 2c. FTRS Officers (Regular and Non Regular) strengths by Branch, Specialisation and Arm
- 2d. FTRS Ratings (Regular and Non Regular) strengths by Branch, Specialisation and Arm

## **Trained Regular strengths by Branch and Paid Rank**

- 3a. Trained Regular Officer strengths and liability by Branch and Paid Rank
- 3b. Trained Regular Ratings strengths and liability by Branch and Paid Rank
- 3c. Graphs of Trained Regular Officer surplus/deficit by Paid Rank
- 3d. Graphs of Trained Regular Ratings surplus/deficit by Paid Rank
- 3e. FTRS Officer (Regular and Non Regular) strengths by Branch and Paid Rank
- 3f. FTRS Ratings (Regular and Non Regular) strengths by Branch and Paid Rank

## **Trained Regular strengths by Branch Specialisation, Arm and Paid Rank**

- 4a. (GS) Trained Regular Officer General Service strengths by Branch, Specialisation, Arm and Paid Rank
- 4a. (SM) Trained Regular Officer Submarine strengths by Branch, Specialisation, Arm and Paid Rank
- 4a. (FAA) Trained Regular Officer Fleet Air Arm Branch, Specialisation, Arm and Paid Rank
- 4b. (GS) Trained Regular Ratings General Service strengths by Branch, Specialisation, Arm and Paid Rank
- 4b. (SM) Trained Regular Ratings Submarine strengths by Branch, Specialisation, Arm and Paid Rank
- 4b. (FAA) Trained Regular Ratings Fleet Air Arm strengths by Branch, Specialisation, Arm and Paid Rank

**Untrained Regular strengths by branch and Paid Rank**

- 5a. Untrained Regular Officer strengths by Branch and Paid Rank
- 5b. Untrained Regular Ratings strengths by Branch and Paid Rank

**Trained Regular strengths by Top Level Budget (TLB) and Paid Rank**

- 6a. Trained Regular strength by TLB and Paid Rank

**Trained Regular length of service (LoS)**

- 7a. Trained Regular length of service by rank
- 7b. Graph of Trained Regular Officer length of service by paid rank split by RN and RM
- 7c. Graph of Trained Regular Rating length of service by paid rank split by RN and RM

**Trained Regular outflow**

- 9a. Trained Regular Officer outflow
- 9b. Trained Regular Rating outflow

**Trained Regular Voluntary Outflow**

- 10a. Trained Regular Officer voluntary outflow exits by Paid Rank
- 10b. Trained Regular Rating voluntary outflow exits by Paid Rank

**Trained regular promotion to Substantive Rank**

- 11a. Trained Regular Officer promotions to Substantive Rank
- 11b. Trained Regular Ratings promotions to Substantive Rank

**Gains to the Trained Strength (GTS)**

- 12a. Gains to the Officer Trained strength by Branch
- 12b. Gains to the Ratings trained strength by Branch and Specialisation

**Trained Intake from 'Civil Life' or 'Another Service'**

- 13a. Trained intake to the regular service

## Summary of NATO Ranks

Officers				
NATO Rank	Royal Navy	Royal Marines	Army	RAF
OF10	Admiral of The Fleet	N/A	Field Marshal	Marshal of the RAF
OF9	Admiral of The Fleet	General	General	Air Chief Marshal
OF8	Vice Admiral	Lieutenant General	Lt – General	Air Marshal
OF7	Rear Admiral	Major General	Major General	Air Vice Marshal
OF6	Commodore	Brigadier	Brigadier	Air Commodore
OF5	Captain	Colonel	Colonel	Group Captain
OF4	Commander	Lt Colonel	Lt Colonel	Wing Commander
OF3	Lieutenant Commander	Major	Major	Squadron Leader
OF2	Lieutenant	Captain	Captain	Flight Lieutenant
OF1	Sub-Lieutenant	Lieutenant / 2 <sup>nd</sup> Lieutenant	Lieutenant / 2 <sup>nd</sup> Lieutenant	Flying Officer / Pilot Officer
OFD	Officer Designate	Officer Designate	N/A	N/A

Ratings				
NATO Rank	Royal Navy	Royal Marines	Army	RAF
OR9	Warrant Officer 1	Warrant Officer 1	Warrant Officer 1	Warrant Officer
OR8	Warrant Officer 2	Warrant Officer 2	Warrant Officer 2	N/A
OR7	Chief Petty Officer	Colour Sergeant	Staff Sergeant	Flight Sergeant
OR6	Petty Officer	Sergeant	Sergeant	Sergeant
OR5	N/A	N/A	N/A	N/A
OR4	Leading Rate	Corporal	Corporal	Corporal
OR3	N/A	Lance Corporal	Lance Corporal	N/A
OR2	Able Rate	Marine (1 <sup>st</sup> Class)	Private	JT/LAC/SAC/AC
OR1*	Ordinary Rate / Junior	Marine (2 <sup>nd</sup> Class) / Junior	N/A	N/A

\* Now obsolete

## Glossary of Terms and Specialisations used within this publication

Term	Definition
Officer	An officer is a member of the Armed Forces holding the Queen's Commission to lead and command elements of the forces. Officers form the middle and senior management of the Armed Forces. This includes ranks from Sub-Lt/2nd Lt/Pilot Officer up to Admiral of the Fleet/Field Marshal/Marshal of the Royal Air Force, but excludes Non-Commissioned Officers
Other Ranks / Ratings	Other Ranks are members of the Royal Marines who are not Officers (but Other Ranks do include Non-Commissioned Officers). The equivalent group in the Royal Navy is known as "Ratings".
Ministry of Defence	The Ministry of Defence (MOD) is the United Kingdom government department responsible for the development and implementation of government defence policy and is the headquarters of the UK Armed Forces. The principal objective of the MOD is to defend the United Kingdom and its interests. The MOD also manages day to day running of the armed forces, contingency planning and defence procurement.
RNR	Royal Naval Reserve is the Volunteer Reserve element of the Royal Navy. Together with the Royal Marine Reserve they make up the <b>Maritime Reserve</b> .
RMR	Royal Marine Reserve is the Volunteer Reserve element of the Royal Marines. Together with the Royal Naval Reserve they make up the <b>Maritime Reserve</b> .
Maritime Reserve	Is the Volunteer Reserve element of the Naval Service that count towards the Future Reserve 2020 (FR20) programme. They comprise the Royal Naval Reserve and the Royal Marine Reserve and include mobilised and High Readiness Maritime Reserve personnel, plus Maritime Reserve personnel serving on FTRS and ADC contracts. The FR20 Trained Strength target for the Maritime Reserve is 3,100.
FTRS	<b>FTRS (Full-Time Reserve Service)</b> are personnel who fill Service posts for a set period on a full-time basis (this is different from mobilisation) while being a member of one of the Reserve Forces, either as an ex-regular or as a volunteer.  Each Service uses FTRS personnel differently. The Naval Service predominantly uses FTRS to backfill gapped regular posts. However, they do have a small number of FTRS personnel that are not deployable for operations overseas.
FTRS Regular	FTRS Personnel counted against the Regular Liability
FTRS Non Regular	FTRS Personnel not counted against the Regular Liability
Transfer Trainees	Trained Personnel undergoing further training in an alternative discipline
GS	General Service - Surface Fleet
SM	Submarine Service

FAA	Fleet Air Arm – The Royal Navy’s Aviation branch.
VO	Voluntary Outflow - all voluntarily generated exits from trained personnel
TX	Time Expiry - personnel who leave service at the end of their engagement
OW	Other Wastage - outflow from trained strength due to a number of reasons, including (but not limited to) disciplinary, death, medical
JPA	Joint Personnel Administration: the system used by the Armed Forces to deal with matters of pay, leave and other personnel administrative tasks. JPA replaced the Naval Service IT system in November 2006
QARNNS	Queen Alexandra's Royal Naval Nursing Service - the Nursing branch of the Royal Navy which work alongside the Royal Navy Medical branch
Strength	The number of personnel (for each Service, strength is partially determined by its requirement)
Trained Strength	Comprises military personnel who have completed Phase 1 and Phase 2 training: Phase 1 training includes all new entry training to provide basic military skills Phase 2 training includes initial individual specialisation, sub-specialisation and technical training following Phase 1 training prior to joining the trained strength
Untrained Strength	Comprises military personnel who have yet to complete Phase 2 training

#### **Outflow Tables                    9a, 9b, 10a, 10b**

The outflow tables presented in this report give a true reflection of the number of service personnel who have left the Royal Navy or the Royal Marines from each of the branches .

The corresponding figures at the top of each of the tables show how many personnel have left the Royal Navy or the Royal Marines as a summation of the outflows of all of the branches.

The very top line of each table shows the sum of the exits from the Royal Navy and the Royal Marines. As a result, this total figure includes the number of people who have transferred between the Royal Navy and Royal Marines.

The UK Armed Forces Monthly Personnel Statistics, produced by Defence Statistics (Tri Service) reports on the total number of outflows from each of the three services (Royal Navy and Royal Marines are reported together as a single service) in tables 5c and 5d. Since the Tri Service report does not include transfers between the Royal Navy and the other services, the figures reported will differ between the two publications, with the UK Armed Forces Monthly Personnel Statistics indicating a lower number of outflows.

## Background Information

### Revisions

Corrections to the published statistics will be made if errors are found, or if figures change as a result of improvements to methodology or changes to definitions. When making corrections, we will follow the Ministry of Defence [Statistics Revisions and Corrections Policy](#). All corrected figures will be identified by the symbol “r”, and an explanation will be given of the reason for and size of the revision. Corrections which would have a significant impact on the utility of the statistics will be corrected as soon as possible, by reissuing the publication. Minor errors will also be corrected, but for convenience these corrections may be timed to coincide with the next release of the publication.

Marked figures in table 1a have been revised to represent Defence Planning Liability 2016, which was in use from April 2016 and is therefore the appropriate liability against which to measure 1 April 2016 strength. This is consistent with the [UK Armed Forces Monthly Service Personnel Statistics](#).

### Data Sources

Royal Navy/ Royal Marines statistics prior to March 2006 are compiled from pay records held by the Service Personnel and Veterans Agency (SPVA, formerly the Armed Forces Personnel Administration Agency). In March 2006 the transfer of all Regular Service personnel records to the Joint Personnel Administration (JPA) system began. Statistics are compiled from JPA for the Royal Navy/ Royal Marines from November 2006.

### Rounding Policy

All totals are rounded as a means of disclosure control and to improve the clarity of outputs, therefore totals may not equal the sum of their parts. All numbers are rounded to the nearest 10 with numbers ending in 5 rounded to the nearest multiple of 20 to avoid bias. Numbers that would be rounded to 0 are represented by ‘~’.

### Liability

Liability is also known as requirement. The liability used in this publication is taken from the Planning Liability PL 2-16, scaled to Defence Planning Liability 2016.

**Feedback**

At Defence Statistics we welcome feedback on our statistical products, if you have any comments or questions about this publication or about the statistics produced by Defence Statistics in general, please contact us as follows:

Contact: **Defence Statistics**

Email: [DefStrat-Stat-Navy@mod.uk](mailto:DefStrat-Stat-Navy@mod.uk)

Visit our website: [www.gov.uk/organisations/ministry-of-defence/about/statistics](http://www.gov.uk/organisations/ministry-of-defence/about/statistics)



## 1a

## Royal Navy and Royal Marines Trained Strengths and Liability

	Apr-13	Apr-14	Apr-15	Apr-16
RN/RM Regulars	31,280	30,310	29,800	29,400
FTRS "Regulars" *	150	200	250	310
FTRS "Non-Regulars" *	250	300	350	380

May-16	Jun-16	Jul-16	Aug-16	Sep-16	Oct-16	Nov-16
29,360	29,270	29,340	29,360	29,200	29,200	29,130
300	310	310	320	320	310	310
400	400	410	410	420	430	440

Total	<i>RN/RM Strength</i>	31,420	30,510	30,060	29,700
	Royal Navy	24,430	23,260	22,790	22,510
	Royal Marines	6,850	7,050	7,020	6,880
	FTRS "Regulars" *	150	200	250	310
	Liability	30,530	30,340	30,280	30,100
	Regular Surplus/Deficit	750	-40	-480	-700
	Regular Surplus/Deficit (%)	2.4%	-0.1%	-1.6%	-2.3%
	Total Surplus/Deficit	890	160	-230	-400
	Total Surplus/Deficit (%)	2.9%	0.5%	-0.7%	-1.3%

29,650	29,580	29,650	29,680	29,520	29,520	29,440
22,480	22,430	22,490	22,510	22,390	22,400	22,350
6,870	6,840	6,850	6,850	6,810	6,800	6,780
300	310	310	320	320	310	310
30,110	30,120	30,120	30,130	30,140	30,150	30,160
-750	-850	-780	-770	-940	-950	-1,030
-2.5%	-2.8%	-2.6%	-2.6%	-3.1%	-3.1%	-3.4%
-450	-540	-480	-450	-620	-640	-710
-1.5%	-1.8%	-1.6%	-1.5%	-2.1%	-2.1%	-2.4%

Officers		6,240	6,100	6,000	5,920
	Royal Navy	5,400	5,250	5,150	5,040
	Royal Marines General Service	750	750	750	750
	Royal Marines Band Service	10	10	10	10
	Transfer Trainees	10	10	10	10
	FTRS "Regulars" *	60	80	80	100
	Liability	5,810	5,850	5,950	5,940
	Surplus/Deficit	420	240	60	-20
	Surplus/Deficit (%)	7.3%	4.1%	1.0%	-0.3%

5,920	5,940	5,950	5,920	5,890	5,900	5,880
5,050	5,070	5,080	5,060	5,030	5,050	5,030
750	740	740	730	730	720	720
10	10	10	10	10	10	10
10	10	10	10	10	10	10
100	100	100	100	100	100	100
5,940	5,940	5,940	5,870	5,870	5,870	5,870
-20	~	10	50	30	40	10
-0.3%	0.0%	0.1%	0.9%	0.4%	0.6%	0.2%

Ratings		25,190	24,410	24,050	23,780
	Warfare (General Service)	4,720	4,480	4,450	3,840
	Warfare (Submarine)	790	760	780	570
	Warfare (Air)	730	690	690	660
	Engineering (General Service)	4,100	3,740	3,540	4,230
	Engineering (Submarine)	2,060	1,970	1,920	2,070
	Engineering (Air)	3,110	3,030	2,970	2,880
	Logistics	2,680	2,630	2,560	2,480
	Medical	920	900	890	880
	Royal Marines General Service	5,630	5,720	5,700	5,590
	Royal Marines Band Service	340	340	340	340
	FTRS "Regulars" *	90	120	170	210
	Unknown	-	-	-	-
	Transfer Trainees	30	30	40	40
	Liability	24,720	24,490	24,340	24,160
	Surplus/Deficit	470	-80	-280	-380
	Surplus/Deficit (%)	1.9%	-0.3%	-1.2%	-1.6%

23,730	23,640	23,700	23,760	23,620	23,610	23,570
3,810	3,800	3,820	3,840	3,820	3,820	3,810
570	560	570	580	570	560	560
660	660	660	660	660	660	660
4,210	4,190	4,210	4,220	4,200	4,230	4,220
2,080	2,070	2,090	2,100	2,090	2,090	2,090
2,860	2,840	2,810	2,810	2,790	2,780	2,770
2,490	2,490	2,480	2,480	2,470	2,470	2,460
880	880	860	860	850	850	850
5,590	5,560	5,570	5,580	5,540	5,530	5,520
340	340	340	340	340	340	340
200	210	210	220	210	210	210
-	-	-	-	-	-	-
40	40	80	80	80	80	70
24,170	24,180	24,180	24,270	24,270	24,280	24,290
-440	-540	-480	-500	-650	-670	-720
-1.8%	-2.2%	-2.0%	-2.1%	-2.7%	-2.8%	-3.0%

## Nov-16 Edition.

From Jan 10 and elsewhere in this document, liability split by Officer/Rating, Branch & Spec is taken from the relevant Planning Liability (currently PL 2-16) scaled to DP16. Monthly liability figures are calculated using a straight line interpolation between the relevant April points (currently April 2016 and April 2017).

\* In this table only, the FTRS Strength has been split into those that are counted against the Regular liability (FTRS "Regulars"), and those that are not (FTRS "Non-Regulars").

1b

## Summary of Royal Navy and Royal Marines Strength by Service and Arm

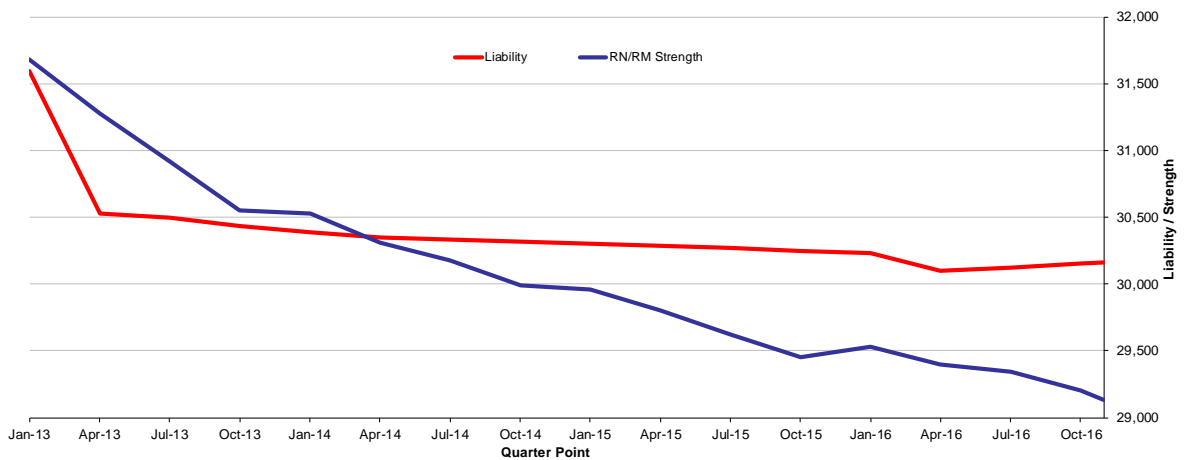
<b>Total</b>	<b>29,440</b>
Royal Navy	22,620
Royal Marines	6,830

	<b>Officers Ratings</b>	
<b>Total</b>	<b>5,880</b>	<b>23,570</b>
Royal Navy	5,140	17,480
Royal Marines	740	6,090

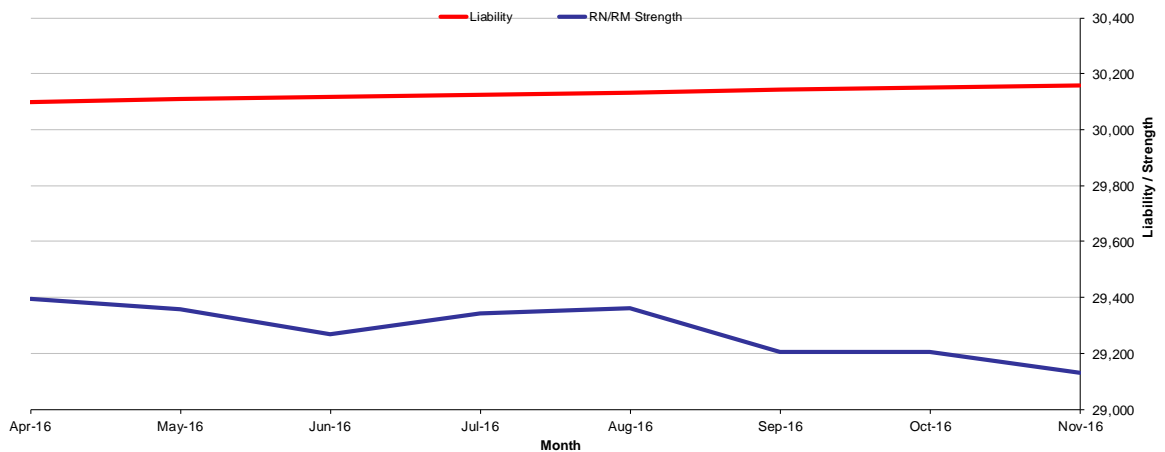
	<b>GS</b>	<b>SM</b>	<b>FAA</b>
<b>Total</b>	<b>20,740</b>	<b>4,060</b>	<b>4,640</b>
Royal Navy	13,990	4,060	4,570
Royal Marines	6,750	-	80

The strength shown is the total trained Regular and FTRS Regular Personnel  
RN/RM figures are the Royal Navy and Royal Marines combined

## 1c Historic Trained Regular Royal Navy and Royal Marines Strengths and Liability by Quarter



## 1d Recent Trained Regular Royal Navy and Royal Marines Strengths and Liability by Month



2a

## Trained Regular Royal Navy and Royal Marine Officer Strengths\* and Liability\*\* by Branch, Specialisation and Arm

Branch	Specialisation	GS	SM	FAA	Total	Liability	Surplus/Deficit
<b>Total</b>		<b>3,770</b>	<b>840</b>	<b>1,150</b>	<b>5,760</b>	<b>5,870</b>	<b>-110</b>
<b>Warfare</b>		<b>1,340</b>	<b>300</b>	<b>880</b>	<b>2,520</b>	<b>2,610</b>	<b>-80</b>
	Air Traffic Control	-	-	70	70		
	Aviation	-	-	40	40		
	Communications	20	-	-	20		
	Intelligence Officer	130	-	-	130		
	Fighter Controller	30	-	-	30		
	General Service Warfare	310	-	-	310		
	Hydrographic/Meteorological	180	-	-	180		
	Mine Clearance Diver	70	-	-	70		
	Mine Warfare	20	-	-	20		
	Observer	-	-	310	310		
	Pilot	-	-	430	430		
	RM Pilot	-	-	40	40		
	Principal Warfare Officer (PWO)	210	-	-	210		
	PWO (Above Water)	150	-	-	150		
	PWO (Communications)	60	-	-	60		
	PWO (Navigation)	70	-	-	70		
	PWO (Under Water)	80	-	-	80		
	Royal Navy Police	20	-	-	20		
	Submariner	-	300	-	300		
	Unspecified	-	-	-	-		
<b>Engineer</b>		<b>820</b>	<b>440</b>	<b>270</b>	<b>1,530</b>	<b>1,600</b>	<b>-70</b>
	Air Engineer	-	-	270	270		
	Engineer (Information Systems)	40	-	-	40		
	Engineer (Info Systems Submarines)	-	~	-	~		
	Engineer (Training Manager)	200	-	-	200		
	Eng (Training Manager Submarines)	-	20	-	20		
	Marine Engineer	240	-	-	240		
	Marine Engineer (Submarines)	-	230	-	230		
	Weapons Engineer	340	-	-	340		
	Weapons Engineer (Submarines)	-	190	-	190		
	Unspecified	-	-	-	-		
<b>Logistics</b>		<b>410</b>	<b>100</b>	<b>-</b>	<b>510</b>	<b>480</b>	<b>30</b>
	Barrister	40	~	-	40		
	Chartered Management Accountant	20	~	-	20		
	Logistics	360	90	-	450		
	Logistics Family Services	~	-	-	~		
<b>Medical</b>		<b>440</b>	<b>-</b>	<b>-</b>	<b>440</b>	<b>430</b>	<b>10</b>
	Medical Officer	260	-	-	260		
	Medical Services	60	-	-	60		
	Dental Services	40	-	-	40		
	QARNNS	80	-	-	80		
<b>Chaplain</b>		<b>60</b>	<b>-</b>	<b>-</b>	<b>60</b>	<b>60</b>	<b>~</b>
<b>Royal Marines</b>		<b>700</b>	<b>-</b>	<b>-</b>	<b>700</b>	<b>700</b>	<b>~</b>
	Band Service	10	-	-	10		
	General Service	680	-	-	680		

\* The Trained Strength shown in this table does not include the Transfer Trainee Strength, hence the slightly lower figures.

\*\* Smoothed Planning Liability 2-16 has been used and scaled to the interpolated monthly DP16 total figure.

Nov-16 Edition.

2b

### Trained Regular Royal Navy and Royal Marines Rating Strengths\* and Liability\*\* by Branch, Specialisation and Arm

Branch	Specialisation	GS	SM	FAA	Total	Liability	Surplus/Deficit
<b>Total</b>		<b>16,710</b>	<b>3,140</b>	<b>3,440</b>	<b>23,290</b>	<b>24,290</b>	<b>-1,000</b>
<b>Warfare (General Service)</b>		<b>3,790</b>	-	<b>20</b>	<b>3,810</b>	<b>3,970</b>	<b>-160</b>
	Warfare Specialist (WS)	~	-	-	~		
	WS (Above Water Tactical)	540	-	-	540		
	WS (Above Water Warfare)	430	-	-	430		
	WS (Under Water)	250	-	-	250		
	WS (Electronic Warfare)	350	-	-	350		
	Hydrographic/Meteorological (H/M)	-	-	-	-		
	H/M (Hydrographic)	110	-	-	110		
	H/M (Meteorological)	90	-	20	100		
	Mine Warfare	340	-	-	340		
	Diver	370	-	-	370		
	Seaman Specialist	650	-	-	650		
	Naval Airman (Photographer)	40	-	~	40		
	Physical Training Instructor	180	-	-	180		
	Royal Navy Police	220	-	-	220		
	Communications Technician	210	-	-	210		
<b>Warfare (Submarine)</b>		-	<b>560</b>	-	<b>560</b>	<b>610</b>	<b>-40</b>
	Coxswain (Submarines)	-	30	-	30		
	Warfare Spec (Sensors Submarines)	-	300	-	300		
	Warfare Spec (Tactical Submarines)	-	230	-	230		
<b>Warfare (Air)</b>		-	-	<b>660</b>	<b>660</b>	<b>690</b>	<b>-30</b>
	Aircrewman	-	-	80	80		
	Naval Airman (Aircraft Control)	-	-	110	110		
	Naval Airman (Aircraft Handler)	-	-	430	430		
	Royal Marines Aircrewman	-	-	40	40		
<b>Engineer General Service</b>		<b>4,220</b>	-	-	<b>4,220</b>	<b>4,670</b>	<b>-450</b>
	Marine Engineer Mechanic	100	-	-	100		
	Weapon Engineer Mechanic	30	-	-	30		
	Eng Technician (Marine Engineers)	2,010	-	-	2,010		
	Eng Technician (Weapon Engineers)	2,090	-	-	2,090		
<b>Engineer Submariner</b>		-	<b>2,090</b>	-	<b>2,090</b>	<b>2,250</b>	<b>-150</b>
	Eng Tech (Marine Eng Submarines)	-	1,080	-	1,080		
	Eng Tech (Weapon Eng Submarines)	-	990	-	990		
	Marine Engineer Mechanic	-	20	-	20		
	Weapon Engineer Mechanic	-	-	-	-		
<b>Air Engineer</b>		-	-	<b>2,770</b>	<b>2,770</b>	<b>2,820</b>	<b>-50</b>
	Air Engineer Artificer	-	-	40	40		
	Air Engineer Mechanic	-	-	60	60		
	Air Engineer Technician	-	-	2,540	2,540		
	Naval Airman (Survival Equipment)	-	-	130	130		
<b>Logistics</b>		<b>2,070</b>	<b>390</b>	-	<b>2,460</b>	<b>2,620</b>	<b>-160</b>
	Caterer	20	-	-	20		
	Chef	540	150	-	690		
	Family Service	30	-	-	30		
	Steward	290	70	-	360		
	Supply Chain	480	100	-	580		
	Writer	630	80	-	700		
	Royal Marines Chef	70	-	-	70		
<b>Medical</b>		<b>760</b>	<b>90</b>	-	<b>850</b>	<b>940</b>	<b>-90</b>
	Dental Hygienist	10	-	-	10		
	Dental Surgery Assistant	70	-	-	70		
	Medical Assistant	410	90	-	500		
	Medical Technician	60	-	-	60		
	Naval Nurse	150	-	-	150		
	Royal Marines Medical Assistant	60	-	-	60		
<b>Royal Marines (excl Chefs, Med Asst &amp; Aircrewmen)</b>		<b>5,860</b>	-	-	<b>5,860</b>	<b>5,730</b>	<b>140</b>
	Band Service	270	-	-	270		
	Bugler	70	-	-	70		
	General Service	5,520	-	-	5,520		

\* The Trained Strength shown in this table does not include the Transfer Trainee Strength, hence the slightly lower figures.

\*\* Smoothed Planning Liability 2-16 has been used and scaled to the interpolated monthly DP16 total figure.

**2c Royal Navy and Royal Marines FTRS Officer  
(Regular and Non-Regular) Strengths by Branch,  
Specialisation and Arm**

Branch	Specialisation	GS	SM	FAA	Total
<b>Total</b>		<b>170</b>	<b>20</b>	<b>30</b>	<b>210</b>
<b>Warfare</b>		<b>60</b>	<b>10</b>	<b>30</b>	<b>90</b>
	Air Traffic Control	-	-	~	~
	Aviation	-	-	10	10
	Communications	~	-	-	~
	Intelligence Officer	-	-	-	-
	Fighter Controller	-	-	-	-
	General Service Warfare	10	-	-	10
	Hydrographic/Meteorological	~	-	-	~
	Mine Clearance Diver	~	-	-	~
	Mine Warfare	10	-	-	10
	Observer	-	-	10	10
	Pilot	-	-	10	10
	RM Pilot	-	-	-	-
	Principal Warfare Officer (PWO)	~	-	-	~
	PWO (Above Water)	10	-	-	10
	PWO (Communications)	~	-	-	~
	PWO (Navigation)	-	-	-	-
	PWO (Under Water)	10	-	-	10
	Royal Navy Police	-	-	-	-
	Submariner	-	10	-	10
	Unspecified	-	~	-	~
<b>Engineer</b>		<b>20</b>	<b>~</b>	<b>~</b>	<b>20</b>
	Air Engineer	-	-	~	~
	Engineer (Information Systems)	~	-	-	~
	Engineer (Info Systems Submarines)	-	-	-	-
	Engineer (Training Manager)	10	-	-	10
	Eng (Training Manager Submarines)	-	~	-	~
	Marine Engineer	~	-	-	~
	Marine Engineer (Submarines)	-	~	-	~
	Weapons Engineer	~	-	-	~
	Weapons Engineer (Submarines)	-	~	-	~
	Unspecified	-	-	-	-
<b>Logistics</b>		<b>20</b>	<b>-</b>	<b>-</b>	<b>20</b>
	Barrister	-	-	-	-
	Chartered Management Accountant	-	-	-	-
	Logistics	20	-	-	20
	Logistics Family Services	-	-	-	-
<b>Medical</b>		<b>~</b>	<b>-</b>	<b>-</b>	<b>~</b>
	Medical Officer	~	-	-	~
	Medical Services	~	-	-	~
	Dental Services	-	-	-	-
	QARNNS	~	-	-	~
<b>Chaplain</b>		<b>~</b>	<b>-</b>	<b>-</b>	<b>~</b>
<b>Careers</b>		<b>~</b>	<b>-</b>	<b>-</b>	<b>~</b>
<b>Royal Marines</b>		<b>10</b>	<b>-</b>	<b>-</b>	<b>10</b>
	Band Service	-	-	-	-
	General Service	10	-	-	10
<b>Royal Navy Reserves</b>		<b>60</b>	<b>-</b>	<b>-</b>	<b>60</b>
<b>Royal Marines Reserves</b>		<b>-</b>	<b>-</b>	<b>-</b>	<b>-</b>

**Royal Navy and Royal Marines FTRS Rating (Regular and Non-Regular) Strengths by Branch, Specialisation and Arm**

Branch	Specialisation	GS	SM	FAA	Total
Total		460	70	10	540
<b>Warfare (General Service)</b>		<b>100</b>	-	~	<b>100</b>
	Warfare Specialist (WS)	-	-	-	-
	WS (Above Water Tactical)	10	-	-	10
	WS (Above Water Warfare)	20	-	-	20
	WS (Under Water)	~	-	-	~
	WS (Electronic Warfare)	~	-	-	~
	Hydrographic/Meteorological (H/M)	~	-	-	~
	H/M (Hydrographic)	-	-	-	-
	H/M (Meteorological)	~	-	~	~
	Mine Warfare	-	-	-	-
	Diver	10	-	-	10
	Seaman Specialist	20	-	-	20
	Weapons Analyst	~	-	-	~
	Naval Airman (Photographer)	10	-	-	10
	Physical Training Instructor	10	-	-	10
	Royal Navy Police	10	-	-	10
	Communications Technician	~	-	-	~
	Unspecified	-	-	-	-
<b>Warfare (Submarine)</b>		-	<b>10</b>	-	<b>10</b>
	Coxswain (Submarines)	-	~	-	~
	Warfare Specialist (Sensors Sub)	-	~	-	~
	Warfare Specialist (Tactical Sub)	-	~	-	~
<b>Warfare (Air)</b>		-	-	~	~
	Aircrewman	-	-	~	~
	Naval Airman (Aircraft Control)	-	-	~	~
	Naval Airman (Aircraft Handler)	-	-	~	~
	RM Aircrewman	-	-	-	-
	Unspecified	-	-	-	-
<b>Engineer General Service</b>		<b>70</b>	-	-	<b>70</b>
	Marine Engineer Mechanic	10	-	-	10
	Weapon Engineer Mechanic	10	-	-	10
	Eng Technician (Marine Engineer)	20	-	-	20
	Eng Technician (Weapon Engineer)	30	-	-	30
	Unspecified	-	-	-	-
<b>Engineer Submariner</b>		-	<b>60</b>	-	<b>60</b>
	Eng Technician (Marine Eng Sub)	-	30	-	30
	Eng Technician (Weapon Eng Sub)	-	20	-	20
	Marine Engineer Mechanic	-	~	-	~
	Weapon Engineer Mechanic	-	~	-	~
<b>Air Engineer</b>		-	-	<b>10</b>	<b>10</b>
	Air Engineer Artificer	-	-	~	~
	Air Engineer Mechanic	-	-	-	-
	Air Engineer Technician	-	-	~	~
	Naval Airman (Survival Equipment)	-	-	~	~
<b>Logistics</b>		<b>40</b>	~	-	<b>40</b>
	Caterer	10	~	-	10
	Chef	~	~	-	~
	Family Service	-	-	-	-
	Steward	~	-	-	~
	Supply Chain	20	~	-	20
	Writer	10	-	-	10
	Unspecified	-	-	-	-
<b>Medical</b>		~	~	-	~
	Dental Hygienist	-	-	-	-
	Dental Surgery Assistant	-	-	-	-
	Medical Assistant	~	~	-	~
	Medical Technician	-	-	-	-
	RM Medical Assistant	-	-	-	-
	Naval Nurse	~	-	-	~
	Unspecified	-	-	-	-
<b>Royal Marines (excl Chefs, Med Asst &amp; Aircrewmen)</b>		<b>60</b>	-	-	<b>60</b>
	Band Service	~	-	-	~
	Bugler	-	-	-	-
	General Service	60	-	-	60
<b>Royal Navy Reserves</b>		<b>10</b>	-	-	<b>10</b>
<b>Royal Marines Reserves</b>		-	-	-	-
<b>Careers</b>		<b>180</b>	-	-	<b>180</b>

**Trained\* Regular Royal Navy and Royal Marine Officer Strengths and Liability\*\*  
by Branch and Paid Rank\*\*\***

Branch		OF7 and above	OF-6	OF-5	OF-4	OF-3	OF-2	OF-1	Total
Total	Strength	40	90	270	1,040	2,040	1,980	320	5,760
	Liability	30	80	260	1,000	1,940	2,550	-	5,870
	Surplus / Deficit	~	10	10	30	100	-570	320	-110
<b>Warfare</b>									
	Strength	20	40	100	380	940	920	120	2,520
	Liability	20	40	100	370	880	1,200	-	2,610
	Surplus / Deficit	~	~	~	10	60	-280	120	-80
	% Surplus / Deficit	1.1%	-1.2%	-2.6%	3.7%	7.0%	-23.2%	-	-3.2%
<b>Engineer</b>									
	Strength	10	20	90	270	550	540	50	1,530
	Liability	10	20	80	250	540	680	-	1,600
	Surplus / Deficit	~	~	10	20	~	-140	50	-70
	% Surplus / Deficit	-28.5%	2.7%	7.8%	8.1%	0.7%	-21.2%	-	-4.3%
<b>Logistics</b>									
	Strength	~	10	20	90	170	180	40	510
	Liability	-	10	20	90	160	210	-	480
	Surplus / Deficit	~	~	10	~	10	-30	40	30
	% Surplus / Deficit	-	36.6%	28.4%	5.0%	6.7%	-14.7%	-	7.3%
<b>Medical</b>									
	Strength	~	~	30	120	160	120	10	440
	Liability	-	~	20	130	140	140	-	430
	Surplus / Deficit	~	~	~	-10	20	-20	10	10
	% Surplus / Deficit	-	35.3%	16.4%	-6.7%	13.5%	-15.0%	-	2.1%
<b>Chaplain</b>									
	Strength	~	~	-	60	-	-	-	60
	Liability	~	~	~	50	-	-	-	60
	Surplus / Deficit	~	~	~	~	-	-	-	~
	% Surplus / Deficit	1.5%	-	-100.0%	2.4%	-	-	-	2.4%
<b>Royal Marines General Service</b>									
	Strength	~	10	30	110	210	220	90	680
	Liability	~	10	30	110	210	320	-	690
	Surplus / Deficit	see note 1	~	~	~	~	-100	90	~
	% Surplus / Deficit	see note 1	-1.0%	2.3%	2.6%	-0.1%	-31.9%	-	-0.5%
<b>Royal Marines Band Service</b>									
	Strength	-	-	-	~	~	10	~	10
	Liability	-	-	-	~	~	~	-	10
	Surplus / Deficit	-	-	-	~	~	~	~	~
	% Surplus / Deficit	-	-	-	4.3%	32.1%	26.5%	-	47.6%
<b>Careers/Other</b>									
	Strength	-	-	-	-	-	-	-	-
	Liability	-	-	-	-	-	-	-	-
	Surplus / Deficit	-	-	-	-	-	-	-	-
	% Surplus / Deficit	-	-	-	-	-	-	-	-
<b>Unspecified</b>									
	Strength	-	-	-	-	-	-	-	-
	Liability	-	-	-	-	-	-	-	-

Nov-16 Edition.

\* The Trained Strength shown in this table does not include the Transfer Trainee Strength, hence the slightly lower figures.

\*\* Smoothed Planning Liability 2-16 has been used and scaled to the interpolated monthly DP16 total figure.

\*\*\* Figures exclude FTRS personnel in regular posts.

<sup>1</sup> At OF7+ RM GS Officers are assigned under the same regime as their RN counterparts, occupying common appointments where liability is attributable across the RN/RM OF7+ population.

**Trained\* Regular Royal Navy and Royal Marines Rating Strengths and Liability\*\*  
by Branch and Paid Rank\*\*\***

Branch		OR-9	OR-8 <sup>3</sup>	OR-7	OR-6	OR-4	OR-3	OR-2	Total
<b>Total</b>	Strength	950	410	2,790	3,720	5,460	730	9,230	<b>23,290</b>
	Liability	890	220	2,880	4,480	6,190	see note 2 710	9,630	<b>24,290</b>
	Surplus / Deficit	50	190	-80	-750	-730	730	-400	<b>-1,000</b>
<b>Warfare (General Service)</b>	Strength	150	~	480	690	960	-	1,530	<b>3,810</b>
	Liability	140	-	490	800	1,150	-	1,390	<b>3,970</b>
	Surplus / Deficit	10	~	-10	-110	-190	-	140	<b>-160</b>
	% Surplus / Deficit	8.0%	-	-3.0%	-13.9%	-16.6%	-	10.3%	<b>-4.1%</b>
<b>Warfare (Submarine)</b>	Strength	30	-	80	70	120	-	260	<b>560</b>
	Liability	30	-	80	90	130	-	280	<b>610</b>
	Surplus / Deficit	~	-	~	-10	-10	-	-10	<b>-40</b>
	% Surplus / Deficit	13.1%	-	-5.1%	-16.5%	-11.1%	-	-4.2%	<b>-6.8%</b>
<b>Warfare (Air)</b>	Strength	20	-	80	130	160	-	260	<b>660</b>
	Liability	30	-	80	160	220	-	210	<b>690</b>
	Surplus / Deficit	~	-	~	-20	-60	-	60	<b>-30</b>
	% Surplus / Deficit	-9.7%	-	-5.2%	-13.7%	-27.1%	-	27.1%	<b>-4.5%</b>
<b>Engineering (General Service)</b>	Strength	330	20	700	730	950	-	1,500	<b>4,220</b>
	Liability	300	-	730	990	1,130	-	1,520	<b>4,670</b>
	Surplus / Deficit	30	20	-30	-260	-180	-	-20	<b>-450</b>
	% Surplus / Deficit	10.0%	-	-4.5%	-26.4%	-15.9%	-	-1.5%	<b>-9.6%</b>
<b>Engineering (Submarine)</b>	Strength	120	150	280	300	490	-	750	<b>2,090</b>
	Liability	140	-	340	560	550	-	660	<b>2,250</b>
	Surplus / Deficit	-20	150	-60	-260	-60	-	90	<b>-150</b>
	% Surplus / Deficit	-15.8%	-	-17.1%	-46.8%	-10.8%	-	14.2%	<b>-6.9%</b>
<b>Engineering (Air)</b>	Strength	100	~	430	610	680	-	940	<b>2,770</b>
	Liability	90	-	430	610	740	-	950	<b>2,820</b>
	Surplus / Deficit	10	~	-10	10	-60	-	-10	<b>-50</b>
	% Surplus / Deficit	9.5%	-	-1.4%	0.9%	-7.6%	-	-1.1%	<b>-1.9%</b>
<b>Logistics</b>	Strength	60	~	240	410	730	~	1,010	<b>2,460</b>
	Liability	60	-	220	430	800	-	1,110	<b>2,620</b>
	Surplus / Deficit	~	~	10	-20	-60	~	-100	<b>-160</b>
	% Surplus / Deficit	4.2%	-	6.6%	-4.8%	-7.9%	-	-9.1%	<b>-6.1%</b>
<b>Medical</b>	Strength	30	-	120	160	270	~	270	<b>850</b>
	Liability	30	-	120	200	310	-	280	<b>940</b>
	Surplus / Deficit	~	-	~	-40	-40	~	~	<b>-90</b>
	% Surplus / Deficit	-14.5%	-	-1.3%	-18.4%	-14.3%	-	-1.2%	<b>-9.5%</b>
<b>Royal Marines General Service Excludes RM Med Assistant, RM Aircrewman, RM Band, RM Careers Service and RM Chefs</b>									
	Strength	90	220	370	570	1,040	710	2,520	<b>5,520</b>
	Liability	70	210	350	600	1,100	see note 2 710	3,060	<b>5,400</b>
	Surplus / Deficit	20	10	10	-30	-60	-	-540	<b>120</b>
	% Surplus / Deficit	32.3%	3.4%	3.8%	-4.8%	-5.7%	-	-17.7%	<b>2.3%</b>
<b>Royal Marines Band Service</b>									
	Strength	10	10	40	50	50	10	180	<b>340</b>
	Liability	~	10	20	50	60	-	180	<b>330</b>
	Surplus / Deficit	~	~	10	~	~	10	~	<b>10</b>
	% Surplus / Deficit	51.7%	16.8%	44.9%	-1.6%	-7.2%	-	-2.2%	<b>4.5%</b>
<b>Unspecified</b>	Strength	-	-	-	-	-	-	-	-
	Liability	-	-	-	-	-	-	-	-
<b>CAPPS</b>	Strength	-	-	-	-	-	-	-	-
	Liability	-	-	-	-	-	-	-	-

Nov-16 Edition.

\* The Trained Strength shown in this table does not include the Transfer Trainee Strength, hence the slightly lower figures.

\*\* Smoothed Planning Liability 2-16 has been used and scaled to the interpolated monthly DP16 total figure.

\*\*\* Figures exclude FTRS personnel in regular posts.

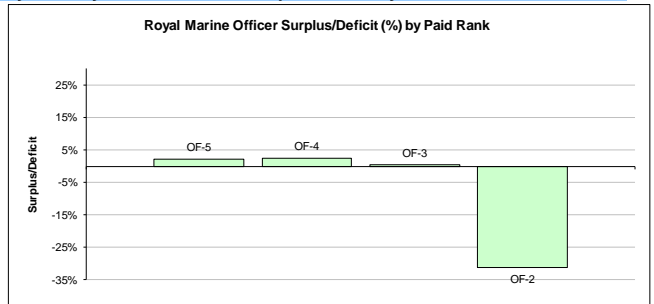
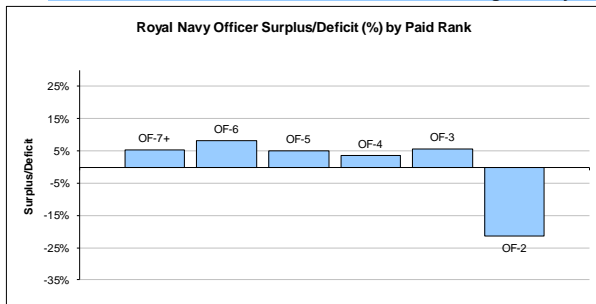
<sup>2</sup> Royal Marines are the only part of the RN/RM Service to currently contain OR3 strength.

As no separate liability for OR3 is produced for the RN/RM, the liability for OR2 also includes OR3.

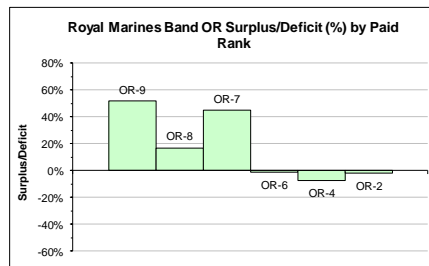
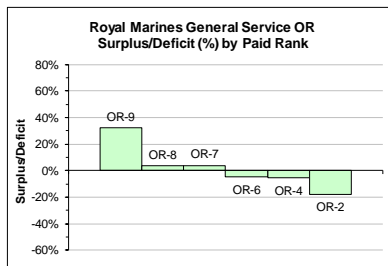
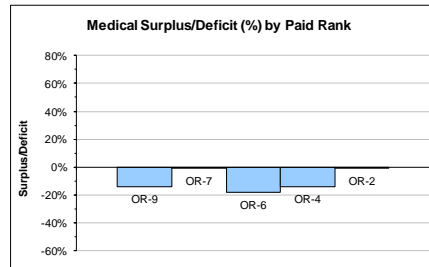
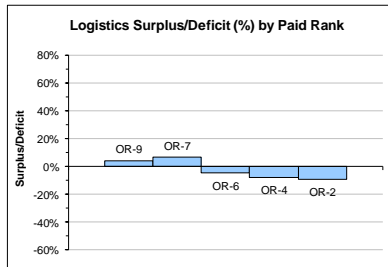
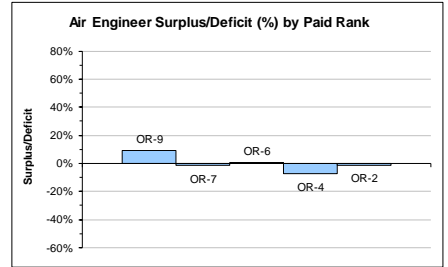
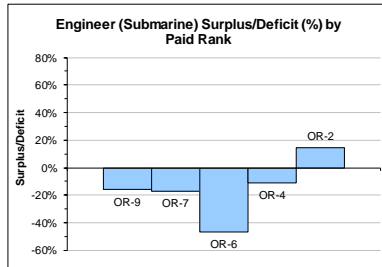
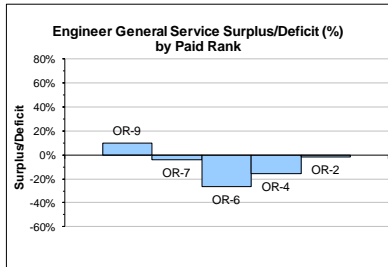
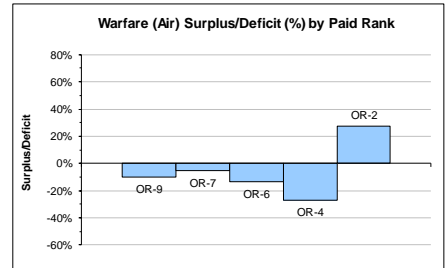
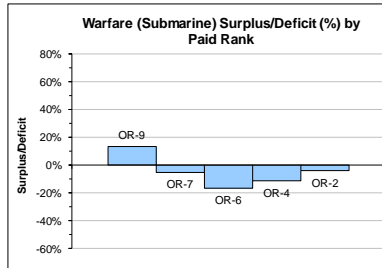
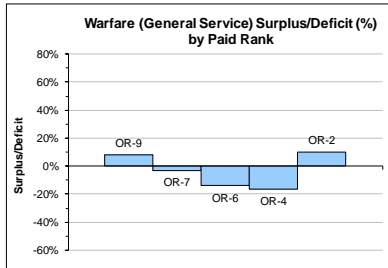
<sup>3</sup> The latest liability (PL2-16) no longer includes RN OR8. This rank will still be reflected in RN strength.



### 3c Trained Regular Royal Navy and Royal Marine Officer Surplus/Deficit by Paid Rank



### 3d Trained Regular Royal Navy and Royal Marine Rating Surplus/Deficit by Paid Rank



<b>3e Royal Navy and Royal Marine Officer FTRS (Regular and Non-Regular)</b> <b>Strength by Branch and Paid Rank</b>								
Branch	OF7+	OF6	OF5	OF4	OF3	OF2	OF1	Total
<b>Total</b>	-	~	10	50	110	40	-	210
Warfare	-	-	~	30	50	10	-	90
Engineer	-	-	~	~	10	10	-	20
Logistics	-	~	~	~	10	-	-	20
Medical	-	-	-	-	~	~	-	~
Chaplain	-	-	-	~	-	-	-	~
Royal Marines General Service	-	-	~	~	10	~	-	10
Royal Marines Band Service	-	-	-	-	-	-	-	-
Royal Navy Reserves	-	~	-	10	30	20	-	60
Royal Marines Reserves	-	-	-	-	-	-	-	-
Careers/Other	-	-	-	-	-	~	-	~

Nov-16 Edition.

<b>3f Royal Navy and Royal Marine Rating FTRS (Regular and Non-Regular)</b> <b>Strength by Branch and Paid Rank</b>								
Branch	OR9	OR8	OR7	OR6	OR4	OR3	OR2	Total
<b>Total</b>	70	10	220	180	40	~	20	540
Warfare (General Service)	20	-	40	40	10	-	~	110
Warfare (Submarine)	~	-	~	~	~	-	-	10
Warfare (Air)	-	-	~	~	-	-	-	~
Engineering (General Service)	10	~	40	10	10	-	~	70
Engineering (Submarine)	~	~	30	10	~	-	-	60
Engineering (Air)	~	-	~	~	~	-	-	10
Logistics	~	-	20	10	10	-	~	40
Medical	~	-	~	~	-	-	-	~
Royal Marines General Service	~	~	20	20	10	~	10	60
<i>Excludes RM Med Assistant, RM Aircrewman, RM Band and RM Careers Service</i>								
Royal Marines Band Service	-	-	~	-	-	-	-	~
Royal Navy Reserves	~	-	~	~	-	-	-	~
Royal Marines Reserves	-	-	-	-	-	-	-	-
Career	30	~	50	90	-	-	-	180
Unspecified	-	-	-	-	-	-	-	-

Nov-16 Edition.

**4a (GS) Trained\* Regular Royal Navy and Royal Marine Officer General Service Strengths by Branch and Specialisation and Paid Rank**

Branch	Specialisation	OF-7 and above	OF-6	OF-5	OF-4	OF-3	OF-2	OF-1	Total
<b>Total</b>		<b>20</b>	<b>60</b>	<b>180</b>	<b>690</b>	<b>1,330</b>	<b>1,220</b>	<b>280</b>	<b>3,770</b>
<b>Warfare</b>		<b>10</b>	<b>20</b>	<b>50</b>	<b>190</b>	<b>520</b>	<b>460</b>	<b>90</b>	<b>1,340</b>
	Communications	-	-	-	~	10	10	-	20
	Intelligence Officer	-	-	-	10	50	60	~	130
	Fighter Controller	-	-	-	-	10	30	-	30
	General Service Warfare	-	-	-	~	30	210	80	310
	Hydrographic/Meteorological	-	-	~	20	60	80	10	180
	Mine Clearance Diver	-	-	-	~	30	40	-	70
	Mine Warfare	-	-	-	-	~	20	-	20
	Principal Warfare Officer (PWO)	~	~	10	30	160	10	-	210
	PWO (Above Water)	~	10	20	60	60	~	-	150
	PWO (Communications)	~	~	~	20	30	-	-	60
	PWO (Navigation)	~	~	~	20	40	~	-	70
	PWO (Under Water)	~	~	10	30	30	-	-	80
	Royal Navy Police	-	-	-	~	10	10	~	20
	Unspecified	-	-	-	-	-	-	-	-
<b>Engineer</b>		<b>~</b>	<b>10</b>	<b>50</b>	<b>140</b>	<b>300</b>	<b>280</b>	<b>40</b>	<b>820</b>
	Engineer (Information Systems)	-	-	~	10	20	~	-	40
	Engineer (Training Manager)	-	~	10	30	70	80	10	200
	Marine Engineer	~	~	20	50	90	70	10	240
	Weapons Engineer	-	10	20	60	120	130	10	340
	Unspecified	-	-	-	-	-	-	-	-
<b>Logistics</b>		<b>-</b>	<b>10</b>	<b>20</b>	<b>60</b>	<b>140</b>	<b>140</b>	<b>40</b>	<b>410</b>
	Barrister	-	~	~	10	20	~	-	40
	Chartered Management Accountant	-	-	~	10	10	-	-	20
	Logistics	-	~	10	50	110	140	40	360
	Logistics Family Services	-	-	-	-	~	~	-	~
<b>Medical</b>		<b>~</b>	<b>~</b>	<b>30</b>	<b>120</b>	<b>160</b>	<b>120</b>	<b>10</b>	<b>440</b>
	Medical Officer	~	~	20	80	100	60	-	260
	Medical Services	-	-	~	10	20	20	10	60
	Dental Services	-	-	~	20	20	~	-	40
	QARNNS	-	~	~	10	20	30	10	80
<b>Chaplain</b>		<b>~</b>	<b>~</b>	<b>-</b>	<b>60</b>	<b>-</b>	<b>-</b>	<b>-</b>	<b>60</b>
<b>Other</b>		<b>-</b>	<b>-</b>	<b>-</b>	<b>-</b>	<b>-</b>	<b>-</b>	<b>-</b>	<b>-</b>
<b>Royal Marines</b>		<b>~</b>	<b>10</b>	<b>30</b>	<b>110</b>	<b>220</b>	<b>220</b>	<b>100</b>	<b>700</b>
	Band Service	-	-	-	~	~	10	~	10
	General Service	~	10	30	110	210	220	90	680

\* The Trained Strength shown in this table does not include the Transfer Trainee Strength, hence the slightly lower figures.

**Nov-16 Edition.**

#### 4a (SM) Trained\* Regular Royal Navy and Royal Marines Officer Submarine Strengths by Branch and Specialisation and Paid Rank

Branch	Specialisation	OF-7 and above	OF-6	OF-5	OF-4	OF-3	OF-2	OF-1	Total
<b>Total</b>		<b>10</b>	<b>20</b>	<b>50</b>	<b>160</b>	<b>270</b>	<b>320</b>	<b>30</b>	<b>840</b>
<b>Warfare</b>		~	10	10	40	90	120	20	300
	Submariner	~	10	10	40	90	120	20	300
<b>Engineer</b>		10	10	30	80	150	160	10	440
	Engineer (Info Systems Submarines)	-	-	-	-	~	-	-	~
	Engineer (Training Mgr Submarines)	-	-	~	10	~	10	-	20
	Marine Engineer (Submarines)	~	~	10	50	80	80	~	230
	Weapons Engineer (Submarines)	~	~	20	30	60	70	10	190
	Unspecified	-	-	-	-	-	-	-	-
<b>Logistics</b>		~	~	~	30	40	30	-	100
	Barrister	-	-	-	~	~	-	-	~
	Chartered Management Accountant	-	-	-	~	~	-	-	~
	Logistics	~	~	~	20	30	30	-	90
	Logistics Family Services	-	-	-	-	-	-	-	-
<b>Other</b>		-	-	-	-	-	-	-	-

\* The Trained Strength shown in this table does not include the Transfer Trainee Strength, hence the slightly lower figures.

#### 4a (FAA) Trained\* Regular Royal Navy and Royal Marine Officer Fleet Air Arm Strengths by Branch and Specialisation and Paid Rank

Branch	Specialisation	OF-7 and above	OF-6	OF-5	OF-4	OF-3	OF-2	OF-1	Total
<b>Total</b>		<b>10</b>	<b>20</b>	<b>40</b>	<b>190</b>	<b>440</b>	<b>440</b>	<b>20</b>	<b>1,150</b>
<b>Warfare</b>		~	10	30	140	340	340	10	880
	Air Traffic Control	-	-	~	~	20	40	~	70
	Aviation	-	-	-	~	10	20	10	40
	Observer	~	~	10	70	120	100	-	310
	Pilot	~	~	20	60	170	180	~	430
	RM Pilot	-	-	~	10	20	10	-	40
	Unspecified	-	-	-	-	-	-	-	-
<b>Engineer</b>		~	10	10	50	100	100	10	270
	Air Engineer	~	10	10	50	100	100	10	270
<b>Other</b>		-	-	-	-	-	-	-	-

\* The Trained Strength shown in this table does not include the Transfer Trainee Strength, hence the slightly lower figures.

Nov-16 Edition.

**4b (GS)**
**Trained\* Regular Rating General Service Strengths  
by Branch and Specialisation and Paid Rank**

Branch	Specialisation	OR-9	OR-8	OR-7	OR-6	OR-4	OR-3	OR-2	Total
<b>Total</b>		<b>670</b>	<b>250</b>	<b>1,870</b>	<b>2,510</b>	<b>3,870</b>	<b>730</b>	<b>6,810</b>	<b>16,710</b>
<b>Warfare</b>		<b>140</b>	<b>~</b>	<b>470</b>	<b>690</b>	<b>960</b>	<b>-</b>	<b>1,530</b>	<b>3,790</b>
	Warfare Specialist (WS)	-	-	-	-	-	-	~	~
	WS (Above Water Tactical)	20	-	60	100	110	-	240	540
	WS (Above Water Warfare)	20	-	80	80	100	-	150	430
	WS (Under Water)	10	-	40	50	50	-	100	250
	WS (Electronic Warfare)	10	-	40	60	80	-	150	350
	Hydrographic/Meteorological (H/M)	-	-	-	-	-	-	-	-
	H/M (Hydrographic)	~	-	10	20	30	-	60	110
	H/M (Meteorological)	-	-	~	10	30	-	40	90
	Mine Warfare	10	-	20	60	70	-	180	340
	Diver	20	-	30	50	90	-	180	370
	Seaman Specialist	20	-	40	60	130	-	400	650
	Physical Training Instructor	10	-	20	60	90	-	-	180
	Royal Navy Police	10	-	40	80	90	-	-	220
	Communications Technician	20	~	80	40	60	-	10	210
	Unspecified	-	-	-	-	-	-	-	-
<b>Engineer</b>		<b>330</b>	<b>20</b>	<b>700</b>	<b>730</b>	<b>950</b>	<b>-</b>	<b>1,500</b>	<b>4,220</b>
	Marine Engineer Mechanic	30	-	50	10	-	-	-	100
	Weapon Engineer Mechanic	10	-	20	~	-	-	-	30
	Eng Technician (Marine Engineer)	170	~	260	340	480	-	760	2,010
	Eng Technician (Weapon Engineer)	130	10	370	370	470	-	740	2,090
	Unspecified	-	-	-	-	-	-	-	-
<b>Logistics</b>		<b>60</b>	<b>~</b>	<b>200</b>	<b>340</b>	<b>630</b>	<b>~</b>	<b>830</b>	<b>2,070</b>
	Caterer	20	-	-	-	-	-	-	20
	Steward	-	-	10	30	100	-	150	290
	Chef	~	-	50	80	160	-	240	540
	Writer	20	-	70	110	190	-	240	630
	Supply Chain	20	-	50	80	160	-	180	480
	Family Services	~	-	10	20	-	-	-	30
	Royal Marine Chef	~	~	10	20	20	~	10	70
<b>Medical</b>		<b>30</b>	<b>-</b>	<b>100</b>	<b>140</b>	<b>240</b>	<b>~</b>	<b>250</b>	<b>760</b>
	Dental Hygienist	-	-	~	~	~	-	-	10
	Dental Surgery Assistant	~	-	~	10	20	-	30	70
	Medical Assistant	20	-	50	50	110	-	180	410
	Naval Nurse	~	-	30	40	70	-	~	150
	Royal Marines Medical Assistant	~	-	~	10	10	~	30	60
	Medical Technician	~	-	20	20	20	-	~	60
<b>Other</b>		<b>-</b>	<b>-</b>	<b>-</b>	<b>-</b>	<b>-</b>	<b>-</b>	<b>-</b>	<b>-</b>
<b>Royal Marines</b>		<b>100</b>	<b>230</b>	<b>400</b>	<b>620</b>	<b>1,090</b>	<b>720</b>	<b>2,700</b>	<b>5,860</b>
	Royal Marines Band Service	10	10	40	50	50	10	180	340
	Royal Marines General Service	90	220	370	570	1,040	710	2,520	5,520

\* The Trained Strength shown in this table does not include the Transfer Trainee Strength, hence the slightly lower figures.

**4b (SM)****Trained\* Regular Rating Submarine Strengths  
by Branch and Specialisation and Paid Rank**

Branch	Specialisation	OR-9	OR-8	OR-7	OR-6	OR-4	OR-3	OR-2	Total
<b>Total</b>		<b>150</b>	<b>150</b>	<b>410</b>	<b>460</b>	<b>750</b>	-	<b>1,220</b>	<b>3,140</b>
<b>Warfare</b>		<b>30</b>	-	<b>80</b>	<b>70</b>	<b>120</b>	-	<b>260</b>	<b>560</b>
	Coxswain (Submarines)	10	-	20	-	-	-	-	30
	Warfare Spec (Sensors Submarine)	10	-	40	50	70	-	140	300
	Warfare Spec (Tactical Submarine)	10	-	20	20	50	-	130	230
	Unspecified	-	-	-	-	-	-	-	-
<b>Engineer</b>		<b>120</b>	<b>150</b>	<b>280</b>	<b>300</b>	<b>490</b>	-	<b>750</b>	<b>2,090</b>
	Marine Engineer Mechanic	-	-	20	-	-	-	-	20
	Weapon Engineer Mechanic	-	-	-	-	-	-	-	-
	Eng Technician (Marine Engineer)	60	110	140	140	250	-	390	1,080
	Eng Technician (Weapon Engineer)	60	40	120	160	240	-	370	990
	Unspecified	-	-	-	-	-	-	-	-
<b>Logistics</b>		<b>~</b>	-	<b>30</b>	<b>70</b>	<b>110</b>	-	<b>180</b>	<b>390</b>
	Caterer	-	-	-	-	-	-	-	-
	Steward	-	-	~	10	20	-	40	70
	Chef	~	-	20	30	40	-	60	150
	Writer	~	-	10	20	20	-	30	80
	Supply Chain	-	-	10	20	30	-	40	100
	Family Services	-	-	-	-	-	-	-	-
<b>Medical</b>		<b>~</b>	-	<b>10</b>	<b>20</b>	<b>30</b>	-	<b>20</b>	<b>90</b>
	Medical Assistant	~	-	10	20	30	-	20	90
<b>Other</b>		-	-	-	-	-	-	-	-

\* The Trained Strength shown in this table does not include the Transfer Trainee Strength, hence the slightly lower figures.

**4b (FAA)****Trained\* Regular Rating Fleet Air Arm Strengths  
by Branch and Specialisation and Paid Rank**

Branch	Specialisation	OR-9	OR-8	OR-7	OR-6	OR-4	OR-3	OR-2	Total
<b>Total</b>		<b>130</b>	<b>~</b>	<b>520</b>	<b>750</b>	<b>840</b>	-	<b>1,200</b>	<b>3,440</b>
<b>Warfare (Air)</b>		<b>20</b>	-	<b>80</b>	<b>130</b>	<b>160</b>	-	<b>260</b>	<b>660</b>
	Aircrewmen	10	-	20	40	20	-	-	80
	Naval Airman (Aircraft Control)	10	-	20	30	30	-	20	110
	Naval Airman (Aircraft Handler)	10	-	30	50	100	-	240	430
	RM Aircrewmen	~	-	10	10	10	-	-	40
	Unspecified	-	-	-	-	-	-	-	-
<b>Warfare (General Service)</b>		<b>~</b>	-	<b>10</b>	-	-	-	<b>~</b>	<b>20</b>
	H/M (Meteorological)	~	-	10	-	-	-	~	20
	Naval Airman (Photographer)	~	-	-	-	-	-	-	~
<b>Engineer</b>		<b>100</b>	<b>~</b>	<b>430</b>	<b>610</b>	<b>680</b>	-	<b>940</b>	<b>2,770</b>
	Air Engineer Artificer	-	-	40	-	-	-	-	40
	Air Engineer Mechanic	10	-	30	20	-	-	~	60
	Air Engineer Technician	90	~	340	560	640	-	890	2,540
	Naval Airman (Survival Equipment)	~	-	20	20	40	-	50	130
<b>Other</b>		-	-	-	-	-	-	-	-

**Nov-16 Edition.**

\* The Trained Strength shown in this table does not include the Transfer Trainee Strength, hence the slightly lower figures.

5a

# Untrained Regular Royal Navy and Royal Marines Officer Strengths by Branch and Paid Rank

	OF4+	OF3	OF2	OF1	OFD	Total
<b>Total</b>	-	-	<b>130</b>	<b>540</b>	<b>370</b>	<b>1,030</b>
<b>Warfare</b>	-	-	70	290	190	<b>550</b>
<b>Engineer</b>	-	-	20	150	110	<b>270</b>
<b>Logistics</b>	-	-	-	20	20	<b>40</b>
<b>Medical</b>	-	-	40	40	-	<b>80</b>
<b>Chaplain</b>	-	-	-	-	-	-
<b>No Specialisation</b>	-	-	-	-	-	-
<b>RM General Service</b>	-	-	-	40	50	<b>90</b>
<b>RM Band Service</b>	-	-	-	-	-	-
<b>Careers/Other</b>	-	-	-	-	-	-

Nov-16 Edition.

Note: Midshipmen are counted as OF-D

5b Untrained Regular Royal Navy and Royal Marine Rating Strengths by Branch and Paid Rank					
	OR6+	OR4	OR3	OR2	Total
<b>Total</b>	~	<b>40</b>	-	<b>2,310</b>	<b>2,340</b>
<b>Warfare (General Service)</b>	-	-	-	<b>340</b>	<b>340</b>
Warfare Specialist	-	-	-	~	~
Warfare Specialist (Above Water Tactical)	-	-	-	60	60
Hydrographic/Meteorological	-	-	-	10	10
H/M (Hydrographic)	-	-	-	-	-
H/M (Meteorological)	-	-	-	-	-
Mine Warfare	-	-	-	20	20
Diver	-	-	-	50	50
Seaman Specialist	-	-	-	100	100
Naval Airman (Photographer)	-	-	-	-	-
Communications Technician	-	-	-	40	40
Unspecified	-	-	-	~	~
<b>Warfare (Submarine)</b>	-	-	-	<b>40</b>	<b>40</b>
Warfare Specialist (Sensors Submarine)	-	-	-	20	20
Warfare Specialist (Tactical Submarine)	-	-	-	20	20
Unspecified	-	-	-	-	-
<b>Warfare (Air)</b>	-	-	-	<b>70</b>	<b>70</b>
Aircrewman	-	-	-	40	40
Naval Airman (Aircraft Control)	-	-	-	10	10
Naval Airman (Aircraft Handler)	-	-	-	20	20
Unspecified	-	-	-	-	-
<b>Engineer General Service</b>	~	<b>20</b>	-	<b>500</b>	<b>520</b>
Eng Technician (Marine Engineer)	~	20	-	240	260
Eng Technician (Weapon Engineer)	-	-	-	260	260
Unspecified	-	-	-	~	~
<b>Engineer Submariner</b>	-	<b>20</b>	-	<b>240</b>	<b>260</b>
Eng Technician (Marine Engineer Sub)	-	20	-	120	140
Eng Technician (Weapon Engineer Sub)	-	~	-	120	120
Unspecified	-	-	-	-	-
<b>Air Engineer</b>	-	-	-	<b>360</b>	<b>360</b>
Air Engineer Technician	-	-	-	340	340
Naval Airman (Survival Equipment)	-	-	-	20	20
Unspecified	-	-	-	-	-
<b>Logistics</b>	-	-	-	<b>100</b>	<b>100</b>
Chef	-	-	-	50	50
Steward	-	-	-	~	~
Supply Chain	-	-	-	30	30
Writer	-	-	-	20	20
Unspecified	-	-	-	-	-
<b>Medical</b>	-	-	-	<b>90</b>	<b>90</b>
Dental Surgery Assistant	-	-	-	~	~
Medical Assistant	-	-	-	60	60
Medical Technician	-	-	-	~	~
Naval Nurse	-	-	-	20	20
Unspecified	-	-	-	-	-
<b>Royal Marines General Service</b>	-	-	-	<b>490</b>	<b>490</b>
<b>Royal Marines Band Service</b>	-	-	-	<b>80</b>	<b>80</b>
Band	-	-	-	70	70
Bugler	-	-	-	~	~
Unspecified	-	-	-	-	-
<b>Unknown</b>	-	-	-	-	-



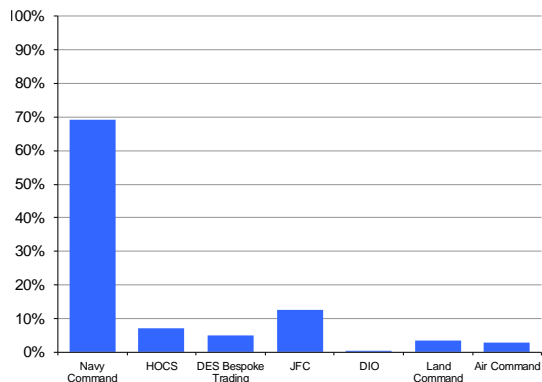
**Officers**

ILB	OF9	OF8	OF7	OF6	OF5	OF4	OF3	OF2	OF1	Total	% of Total Trained Strength
<b>Total</b>	~	10	30	90	270	1,040	2,040	1,980	320	5,760	100.0%
Navy Command	~	~	10	40	120	560	1,430	1,540	280	3,990	69.2%
HOCS	~	~	10	20	50	160	130	30	-	400	7.0%
DES Bespoke Trading	-	~	~	10	30	70	90	80	~	280	4.9%
JFC	-	~	~	20	60	200	260	170	20	730	12.7%
DIO	-	-	-	-	~	~	~	-	-	~	0.1%
Land Command	-	-	-	-	~	20	80	90	10	200	3.5%
Air Command	-	-	-	-	~	20	60	70	~	160	2.7%

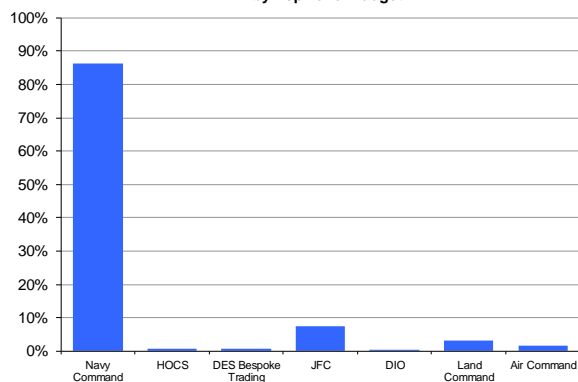
**Ratings**

ILB	OR9	OR8	OR7	OR6	OR4	OR3	OR2	Total	% of Total Trained Strength
<b>Total</b>	950	410	2,790	3,720	5,460	730	9,230	23,290	100.0%
Navy Command	750	340	2,140	3,060	4,710	580	8,550	20,130	86.4%
HOCS	20	~	60	50	40	-	10	180	0.8%
DES Bespoke Trading	70	10	60	10	~	-	~	160	0.7%
JFC	60	40	290	300	470	130	420	1,720	7.4%
DIO	-	-	~	-	~	-	~	~	0.0%
Land Command	20	~	120	190	160	10	220	720	3.1%
Air Command	20	10	120	120	70	-	30	380	1.6%

Trained\* Regular Royal Navy and Royal Marine Officer strength by Top Level Budget



Trained\* Regular Royal Navy and Royal Marine Ratings strength by Top Level Budget



\* The Trained Strength shown in this table does not include the Transfer Trainee Strength, hence the slightly lower figures.

## 7a Trained Regular Royal Navy and Royal Marines Length of Service by Rank

### Royal Navy Officers

Rank		Average LOS on Promotion	Current Average LOS	Average LOS on Exit			
				Overall	VO	TX	OW
OF7+	Admiral	34.2	34.1	35.9	N/A	35.9	N/A
OF6	Commodore	29.7	31.3	32.6	30.3	37.2	N/A
OF5	Captain	26.7	29.4	33.7	31.6	36.1	32.3
OF4	Commander	18.4	23.1	26.8	24.4	30.1	26.4
OF3	Lt Commander	14.7	17.0	19.0	19.4	18.9	16.1
OF2	Lieutenant	13.0	11.1	12.5	12.3	15.5	10.1
OF1	Sub-Lieutenant	9.0	5.8	4.8	N/A	N/A	4.8
OFD	Midshipman	N/A	N/A	N/A	N/A	N/A	N/A
<b>Overall</b>		<b>16.9</b>	<b>16.4</b>	<b>20.5</b>	<b>19.2</b>	<b>25.2</b>	<b>12.8</b>

### Royal Marine Officers

Rank		Average LOS on Promotion	Current Average LOS	Average LOS on Exit			
				Overall	VO	TX	OW
OF7+	Major General and Above	31.1	32.0	34.7	N/A	34.7	N/A
OF6	Brigadier	28.5	30.0	32.0	32.9	36.5	25.9
OF5	Colonel	21.3	26.6	14.2	14.2	N/A	N/A
OF4	Lt Colonel	16.5	21.5	23.1	24.4	21.8	18.6
OF3	Major	15.8	16.0	17.7	16.3	19.1	19.0
OF2	Captain	18.8	11.4	13.2	10.5	20.3	9.7
OF1	Lieutenant	N/A	7.7	N/A	N/A	N/A	N/A
<b>Overall</b>		<b>18.5</b>	<b>15.2</b>	<b>18.4</b>	<b>17.2</b>	<b>22.4</b>	<b>16.5</b>

### Royal Navy Ratings

Rank		Average LOS on Promotion	Current Average LOS	Average LOS on Exit				
				Overall	VO	TX	OW	PTO
OR-9	Warrant Officer 1st Class	25.1	28.9	30.7	30.4	32.5	24.5	15.3
OR-8	Warrant Officer 2nd Class	17.0	23.5	23.6	24.8	24.8	25.7	19.2
OR-7	Chief Petty Officer	18.6	21.4	23.5	23.1	26.8	21.7	14.8
OR-6	Petty Officer	12.3	15.8	18.5	18.0	24.0	16.7	13.5
OR-4	Leading Hand	7.0	10.1	11.4	9.9	19.7	12.8	10.3
OR-2	Able Rating	N/A	4.3	6.3	6.5	7.2	6.0	3.8
<b>Overall</b>		<b>12.3</b>	<b>11.5</b>	<b>12.1</b>	<b>10.8</b>	<b>24.1</b>	<b>9.1</b>	<b>11.8</b>

### Royal Marine Ratings

Rank		Average LOS on Promotion	Current Average LOS	Average LOS on Exit				
				Overall	VO	TX	OW	PTO
OR-9	Warrant Officer 1st Class	24.5	27.5	29.4	N/A	30.4	24.3	25.3
OR-8	Warrant Officer 2nd Class	19.7	24.3	27.5	26.4	28.0	30.0	22.6
OR-7	Colour Sergeant	17.2	20.6	21.5	24.9	22.5	21.4	15.8
OR-6	Sergeant	12.4	15.3	15.5	14.4	23.0	13.3	14.0
OR-4	Corporal	8.6	10.9	13.1	11.5	20.6	12.4	N/A
OR-3	Lance Corporal	8.4	6.4	N/A	N/A	N/A	N/A	N/A
OR-2	Marine	N/A	5.0	7.1	6.6	15.3	7.6	3.2
<b>Overall</b>		<b>12.6</b>	<b>9.7</b>	<b>10.5</b>	<b>8.3</b>	<b>23.8</b>	<b>9.4</b>	<b>13.3</b>

#### Notes

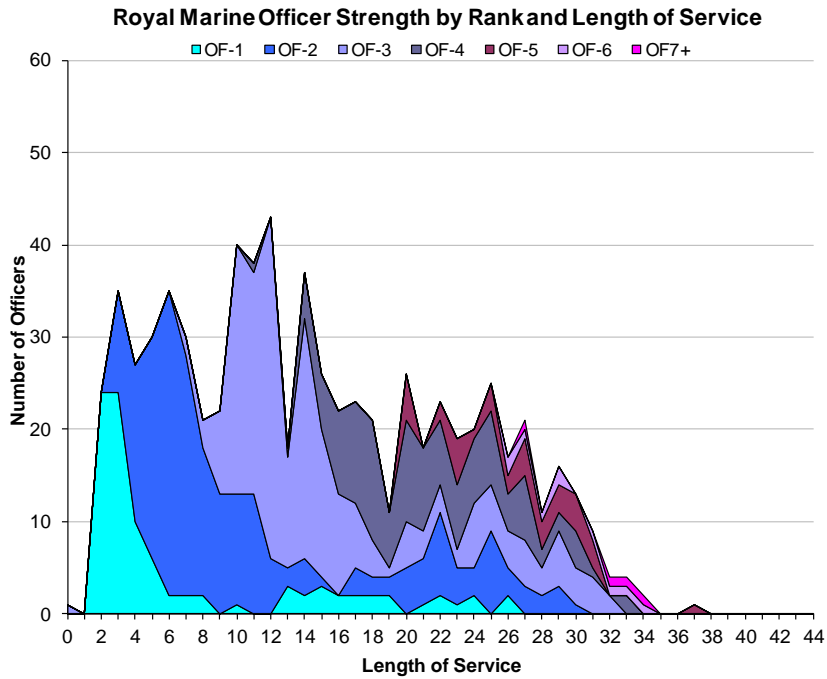
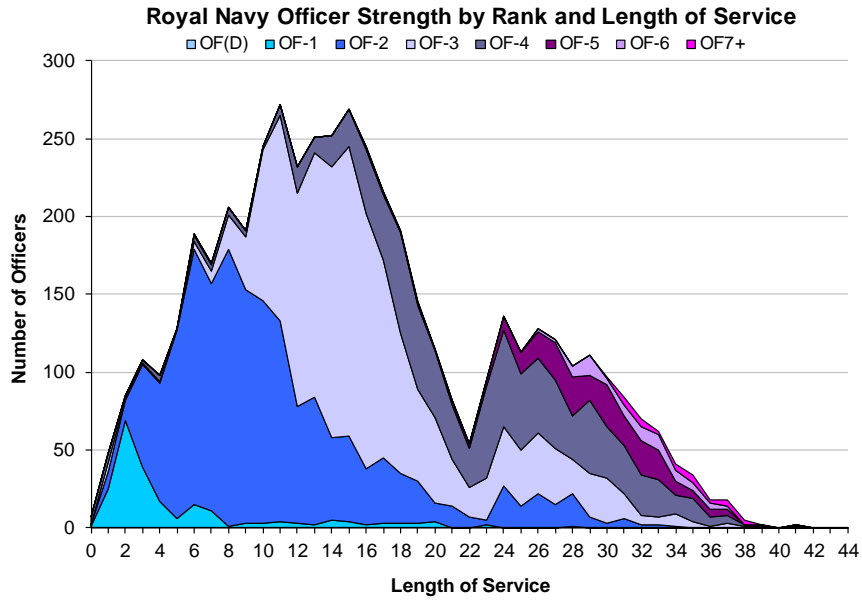
- 1 Flows data are for the last 12 months
- 2 LOS is taken from entry into the RN/RM
- 3 RN Rating and RM Other Rank exits include Promotion to Officer
- 4 Paid rank has been used for the current average LOS, but all other calculations feature substantive rank

#### Key

VO Voluntary Outflow  
TX Time Expiry  
OW Other Wastage  
PTO Promotion to Officer

7b

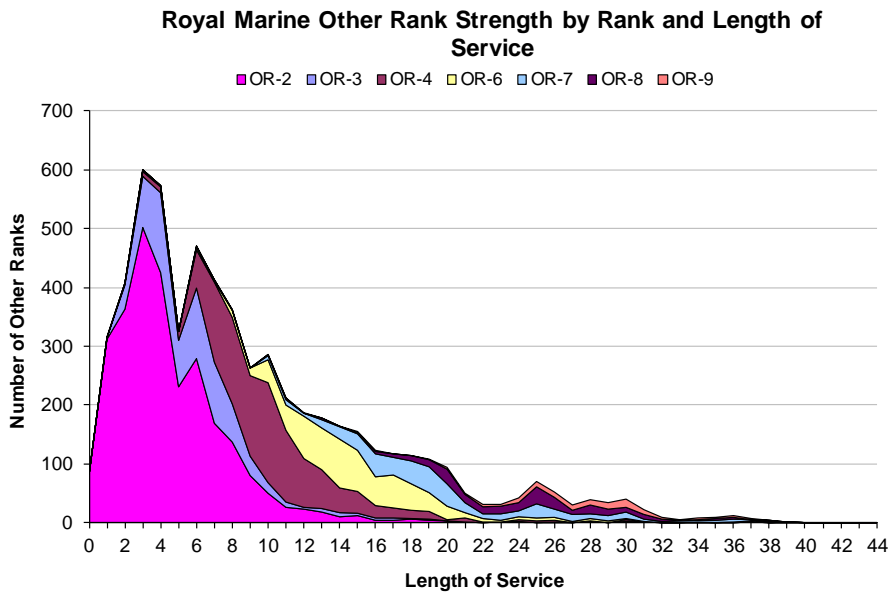
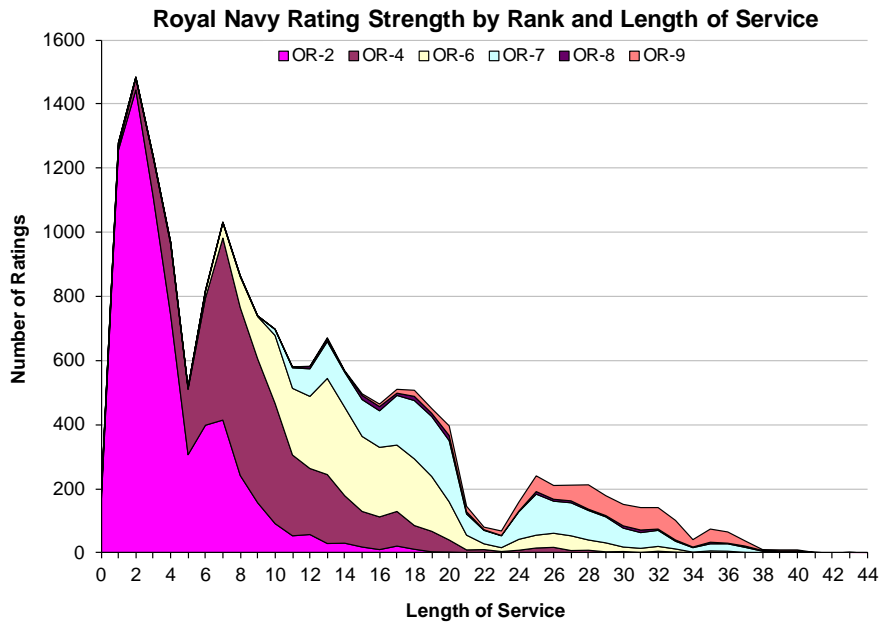
## Trained Regular Officer Length of Service by Paid Rank



Nov-16 Edition.

7c

Trained Regular RN Rating and RM Other Ranks Length of Service by Paid Rank



Nov-16 Edition.

		2012/2013		2013/2014		2014/2015		2015/2016		12 Mths to 1st Nov 16		Actual Oct 16
		Nos.	%	Nos.	%	Nos.	%	Nos.	%	Nos.	%	
<b>Total Officers</b>		<b>540</b>	<b>8.5%</b>	<b>460</b>	<b>7.6%</b>	<b>430</b>	<b>7.2%</b>	<b>420</b>	<b>7.1%</b>	<b>370</b>	<b>6.3%</b>	<b>40</b>
<b>Royal Navy Officers</b>												
	<b>Total</b>	<b>460</b>	<b>8.3%</b>	<b>410</b>	<b>7.6%</b>	<b>380</b>	<b>7.3%</b>	<b>360</b>	<b>7.1%</b>	<b>320</b>	<b>6.2%</b>	<b>30</b>
	Voluntary Outflow	200	3.7%	230	4.3%	230	4.4%	210	4.1%	180	3.5%	20
	Other Wastage	40	0.7%	30	0.6%	30	0.7%	30	0.7%	30	0.7%	10
	Time Expiry	150	2.7%	140	2.7%	120	2.2%	110	2.2%	100	2.1%	10
	Redundancy	70	1.2%	-	0.1%	-	0.0%	10	0.1%	-	0.0%	-
<b>Royal Marine Officers</b>												
	<b>Total</b>	<b>80</b>	<b>10.5%</b>	<b>60</b>	<b>7.4%</b>	<b>50</b>	<b>6.7%</b>	<b>60</b>	<b>7.4%</b>	<b>50</b>	<b>6.9%</b>	<b>-</b>
	Voluntary Outflow	30	4.1%	40	5.0%	20	2.9%	30	4.0%	30	4.0%	-
	Other Wastage	10	1.7%	10	1.1%	10	1.7%	10	1.1%	10	1.2%	-
	Time Expiry	20	2.9%	10	1.3%	20	2.0%	20	2.3%	10	1.7%	-
	Redundancy	10	1.8%	-	0.0%	-	0.0%	-	0.0%	-	0.0%	-
<b>Warfare</b>												
	<b>Total</b>	<b>190</b>	<b>7.1%</b>	<b>200</b>	<b>7.4%</b>	<b>190</b>	<b>7.4%</b>	<b>160</b>	<b>6.4%</b>	<b>150</b>	<b>6.0%</b>	<b>20</b>
	Voluntary Outflow	90	3.1%	100	3.8%	120	4.4%	90	3.6%	80	3.3%	10
	Other Wastage	20	0.7%	20	0.8%	20	0.8%	10	0.6%	20	0.7%	-
	Time Expiry	70	2.7%	70	2.8%	60	2.2%	60	2.3%	50	2.0%	-
	Redundancy	20	0.5%	-	0.0%	-	0.0%	-	0.0%	-	0.0%	-
<b>Engineer</b>												
	<b>Total</b>	<b>150</b>	<b>8.6%</b>	<b>140</b>	<b>8.7%</b>	<b>130</b>	<b>8.0%</b>	<b>130</b>	<b>8.3%</b>	<b>110</b>	<b>6.9%</b>	<b>10</b>
	Voluntary Outflow	90	5.0%	100	5.7%	80	4.6%	90	5.5%	70	4.3%	10
	Other Wastage	10	0.6%	-	0.3%	10	0.5%	10	0.6%	10	0.6%	-
	Time Expiry	50	2.8%	40	2.6%	50	2.8%	30	2.1%	30	2.1%	-
	Redundancy	-	0.2%	-	0.0%	-	0.0%	-	0.0%	-	0.0%	-
<b>Logistics</b>												
	<b>Total</b>	<b>70</b>	<b>12.7%</b>	<b>20</b>	<b>4.8%</b>	<b>30</b>	<b>5.7%</b>	<b>20</b>	<b>4.8%</b>	<b>20</b>	<b>4.9%</b>	<b>-</b>
	Voluntary Outflow	10	2.6%	10	2.6%	20	3.9%	20	3.2%	20	3.4%	-
	Other Wastage	-	0.7%	-	0.4%	-	0.2%	-	0.0%	-	0.2%	-
	Time Expiry	10	1.3%	10	1.6%	10	1.6%	10	1.6%	10	1.4%	-
	Redundancy	40	8.0%	-	0.2%	-	0.0%	-	0.0%	-	0.0%	-
<b>Medical</b>												
	<b>Total</b>	<b>40</b>	<b>9.6%</b>	<b>40</b>	<b>8.7%</b>	<b>30</b>	<b>7.0%</b>	<b>40</b>	<b>10.2%</b>	<b>30</b>	<b>7.0%</b>	<b>-</b>
	Voluntary Outflow	20	4.1%	20	3.4%	20	4.5%	20	4.3%	10	2.3%	-
	Other Wastage	10	1.3%	10	1.6%	-	1.1%	10	2.3%	10	1.6%	-
	Time Expiry	10	3.0%	10	3.0%	-	0.9%	10	2.3%	10	3.2%	-
	Redundancy	-	1.1%	-	0.7%	-	0.5%	10	1.4%	-	0.0%	-
<b>Chaplain</b>												
	<b>Total</b>	<b>-</b>	<b>5.3%</b>	<b>-</b>	<b>7.0%</b>	<b>-</b>	<b>7.0%</b>	<b>-</b>	<b>7.1%</b>	<b>10</b>	<b>10.6%</b>	<b>-</b>
	Voluntary Outflow	-	1.8%	-	3.5%	-	3.5%	-	1.8%	-	3.5%	-
	Other Wastage	-	0.0%	-	0.0%	-	0.0%	-	0.0%	-	0.0%	-
	Time Expiry	-	3.5%	-	3.5%	-	3.5%	-	5.3%	-	7.1%	-
	Redundancy	-	0.0%	-	0.0%	-	0.0%	-	0.0%	-	0.0%	-
<b>Other / No Spec</b>												
	<b>Total</b>	<b>-</b>	<b>N/A</b>	<b>-</b>	<b>N/A</b>	<b>-</b>	<b>N/A</b>	<b>-</b>	<b>N/A</b>	<b>-</b>	<b>N/A</b>	<b>-</b>
	Voluntary Outflow	-	N/A	-	N/A	-	N/A	-	N/A	-	N/A	-
	Other Wastage	-	N/A	-	N/A	-	N/A	-	N/A	-	N/A	-
	Time Expiry	-	N/A	-	N/A	-	N/A	-	N/A	-	N/A	-
	Redundancy	-	N/A	-	N/A	-	N/A	-	N/A	-	N/A	-
<b>Royal Marines General Service</b>												
	<b>Total</b>	<b>80</b>	<b>10.0%</b>	<b>50</b>	<b>7.2%</b>	<b>50</b>	<b>6.2%</b>	<b>50</b>	<b>7.1%</b>	<b>50</b>	<b>6.7%</b>	<b>-</b>
	Voluntary Outflow	30	3.7%	40	4.8%	20	2.8%	30	3.7%	30	3.9%	-
	Other Wastage	10	1.6%	10	1.1%	10	1.6%	10	1.1%	10	1.2%	-
	Time Expiry	20	2.9%	10	1.4%	20	2.0%	20	2.3%	10	1.5%	-
	Redundancy	10	1.8%	-	0.0%	-	0.0%	-	0.0%	-	0.0%	-
<b>Royal Marines Band Service</b>												
	<b>Total</b>	<b>-</b>	<b>16.9%</b>	<b>-</b>	<b>17.9%</b>	<b>-</b>	<b>0.0%</b>	<b>-</b>	<b>0.0%</b>	<b>-</b>	<b>0.0%</b>	<b>-</b>
	Voluntary Outflow	-	8.5%	-	17.9%	-	0.0%	-	0.0%	-	0.0%	-
	Other Wastage	-	8.5%	-	0.0%	-	0.0%	-	0.0%	-	0.0%	-
	Time Expiry	-	0.0%	-	0.0%	-	0.0%	-	0.0%	-	0.0%	-
	Redundancy	-	0.0%	-	0.0%	-	0.0%	-	0.0%	-	0.0%	-
<b>Career</b>												
	<b>Total</b>	<b>-</b>	<b>N/A</b>	<b>-</b>	<b>N/A</b>	<b>-</b>	<b>N/A</b>	<b>-</b>	<b>N/A</b>	<b>-</b>	<b>N/A</b>	<b>-</b>
	Voluntary Outflow	-	N/A	-	N/A	-	N/A	-	N/A	-	N/A	-
	Other Wastage	-	N/A	-	N/A	-	N/A	-	N/A	-	N/A	-
	Time Expiry	-	N/A	-	N/A	-	N/A	-	N/A	-	N/A	-
	Redundancy	-	N/A	-	N/A	-	N/A	-	N/A	-	N/A	-

\* Total Figures in this table may deviate from those found in the UK Armed Forces Monthly Personnel Statistics. Please see the front pages for a comment on this.

## 9b

## Trained Regular Royal Navy and Royal Marine Rating Outflow\*

		2012/2013		2013/2014		2014/2015		2015/2016		12 Mths to 1st Nov 16		Actual Oct 16
		Nos.	%	Nos.	%	Nos.	%	Nos.	%	Nos.	%	
Total Ratings		3,290	12.7%	2,760	11.2%	2,560	10.7%	2,180	9.2%	2,060	8.7%	190
Royal Navy Ratings												
Total	2,390	12.1%	2,280	12.4%	2,000	11.2%	1,670	9.6%	1,540	8.8%	140	
Voluntary Outflow	1,060	5.3%	1,190	6.4%	1,160	6.5%	960	5.5%	860	4.9%	70	
Other Wastage	400	2.1%	380	2.1%	400	2.2%	410	2.3%	400	2.3%	40	
Time Expiry	530	2.7%	610	3.3%	380	2.1%	240	1.3%	200	1.1%	10	
Promotion to Officer	50	0.2%	70	0.4%	60	0.3%	70	0.4%	80	0.5%	10	
Redundancy	350	1.8%	40	0.2%	-	0.0%	-	0.0%	-	0.0%	-	
Royal Marine Ratings												
Total	900	14.6%	480	7.7%	570	9.0%	500	8.1%	520	8.5%	50	
Voluntary Outflow	560	9.0%	240	3.8%	340	5.3%	280	4.5%	260	4.3%	20	
Other Wastage	190	3.1%	130	2.1%	130	2.1%	160	2.6%	180	2.9%	20	
Time Expiry	140	2.3%	80	1.4%	80	1.3%	40	0.7%	60	0.9%	10	
Promotion to Officer	10	0.2%	20	0.4%	20	0.3%	20	0.2%	20	0.3%	-	
Redundancy	-	0.0%	-	0.0%	-	0.0%	-	0.0%	-	0.0%	-	
Warfare (General Service)												
Total	710	14.5%	550	12.1%	520	11.6%	370	9.2%	340	9.0%	30	
Voluntary Outflow	320	6.6%	300	6.6%	310	7.0%	230	5.7%	200	5.1%	10	
Other Wastage	110	2.2%	110	2.5%	110	2.4%	80	2.1%	100	2.5%	10	
Time Expiry	140	2.7%	130	2.8%	90	2.1%	50	1.2%	40	1.0%	-	
Promotion to Officer	10	0.2%	10	0.2%	10	0.2%	10	0.4%	20	0.4%	-	
Redundancy	140	2.7%	-	0.1%	-	0.0%	-	0.0%	-	0.0%	-	
Warfare (Submarine)												
Total	80	9.4%	80	9.8%	70	8.7%	50	8.4%	40	7.5%	-	
Voluntary Outflow	30	4.0%	30	4.0%	40	4.5%	20	3.3%	20	2.8%	-	
Other Wastage	20	2.2%	20	2.1%	20	2.3%	10	2.1%	10	1.6%	-	
Time Expiry	30	3.2%	20	3.2%	10	1.7%	20	2.7%	10	2.3%	-	
Promotion to Officer	-	0.0%	-	0.5%	-	0.1%	-	0.3%	-	0.9%	-	
Redundancy	-	0.0%	-	0.0%	-	0.0%	-	0.0%	-	0.0%	-	
Warfare (Air)												
Total	100	13.0%	80	11.5%	70	9.4%	50	8.2%	50	7.4%	-	
Voluntary Outflow	20	2.6%	40	5.0%	40	5.3%	30	5.0%	30	3.9%	-	
Other Wastage	10	1.8%	10	1.4%	10	2.0%	20	2.4%	10	2.1%	-	
Time Expiry	20	2.0%	20	2.7%	10	1.9%	-	0.2%	-	0.8%	-	
Promotion to Officer	-	0.5%	-	0.4%	-	0.3%	-	0.6%	-	0.6%	-	
Redundancy	50	6.0%	10	2.0%	-	0.0%	-	0.0%	-	0.0%	-	
Engineering (General Service)												
Total	600	14.1%	680	17.4%	550	15.1%	420	10.3%	380	9.0%	40	
Voluntary Outflow	310	7.3%	430	10.9%	330	9.0%	250	6.3%	240	5.6%	20	
Other Wastage	80	1.9%	90	2.2%	110	2.9%	100	2.4%	90	2.2%	10	
Time Expiry	120	2.7%	150	3.9%	100	2.7%	50	1.3%	30	0.7%	-	
Promotion to Officer	10	0.3%	20	0.4%	20	0.5%	20	0.4%	20	0.4%	-	
Redundancy	80	2.0%	-	0.0%	-	0.0%	-	0.0%	-	0.0%	-	
Engineering (Submarine)												
Total	200	9.5%	240	11.8%	240	12.6%	200	9.9%	170	8.0%	20	
Voluntary Outflow	110	5.2%	120	5.9%	140	7.1%	100	5.1%	80	3.8%	10	
Other Wastage	30	1.5%	50	2.3%	40	2.2%	60	2.7%	50	2.5%	10	
Time Expiry	60	2.7%	70	3.4%	60	3.0%	40	1.8%	30	1.4%	-	
Promotion to Officer	-	0.2%	-	0.2%	-	0.3%	-	0.2%	10	0.3%	-	
Redundancy	-	0.0%	-	0.0%	-	0.0%	-	0.0%	-	0.0%	-	
Engineering (Air)												
Total	240	7.7%	280	9.0%	260	8.7%	280	9.5%	280	9.9%	20	
Voluntary Outflow	110	3.3%	120	4.0%	170	5.7%	180	6.0%	180	6.2%	10	
Other Wastage	50	1.6%	50	1.5%	30	1.1%	40	1.5%	50	1.8%	10	
Time Expiry	70	2.2%	80	2.8%	40	1.3%	40	1.3%	30	1.2%	-	
Promotion to Officer	10	0.2%	20	0.7%	20	0.5%	20	0.7%	20	0.7%	-	
Redundancy	10	0.3%	-	0.0%	-	0.0%	-	0.0%	-	0.0%	-	

\* Total Figures in this table may deviate from those found in the UK Armed Forces Monthly Personnel Statistics. Please see the front pages for a comment on this.

Nov-16 Edition.

		2012/2013		2013/2014		2014/2015		2015/2016		12 Mths to 1st Nov 16		Actual Oct 16
		Nos.	%	Nos.	%	Nos.	%	Nos.	%	Nos.	%	
<b>Logistics</b>	<b>Total</b>	<b>340</b>	<b>12.2%</b>	<b>290</b>	<b>11.2%</b>	<b>240</b>	<b>9.0%</b>	<b>240</b>	<b>9.6%</b>	<b>210</b>	<b>8.3%</b>	<b>20</b>
	Voluntary Outflow	110	3.9%	110	4.3%	110	4.4%	110	4.5%	100	3.9%	10
	Other Wastage	80	2.9%	50	1.8%	60	2.5%	90	3.5%	70	2.6%	10
	Time Expiry	90	3.3%	110	4.2%	50	2.0%	40	1.4%	40	1.5%	~
	Promotion to Officer	~	0.1%	10	0.3%	~	0.2%	10	0.3%	10	0.2%	~
	Redundancy	60	2.1%	20	0.7%	-	0.0%	-	0.0%	-	0.0%	-
<b>Medical</b>	<b>Total</b>	<b>120</b>	<b>12.5%</b>	<b>90</b>	<b>10.2%</b>	<b>90</b>	<b>9.5%</b>	<b>90</b>	<b>9.9%</b>	<b>90</b>	<b>10.1%</b>	<b>10</b>
	Voluntary Outflow	50	5.1%	40	4.8%	40	4.4%	40	4.9%	40	4.6%	~
	Other Wastage	20	2.1%	20	2.3%	20	2.3%	30	3.3%	30	3.1%	~
	Time Expiry	20	2.5%	20	2.4%	20	2.2%	10	0.9%	10	1.2%	~
	Promotion to Officer	10	1.0%	~	0.5%	~	0.6%	10	0.8%	10	1.1%	~
	Redundancy	20	1.8%	~	0.2%	-	0.0%	-	0.0%	-	0.0%	-
<b>Other / No Spec</b>	<b>Total</b>	-	<b>N/A</b>	-	<b>N/A</b>	-	<b>N/A</b>	-	<b>N/A</b>	-	<b>N/A</b>	-
	Voluntary Outflow	-	N/A	-	N/A	-	N/A	-	N/A	-	N/A	-
	Other Wastage	-	N/A	-	N/A	-	N/A	-	N/A	-	N/A	-
	Time Expiry	-	N/A	-	N/A	-	N/A	-	N/A	-	N/A	-
	Promotion to Officer	-	N/A	-	N/A	-	N/A	-	N/A	-	N/A	-
	Redundancy	-	N/A	-	N/A	-	N/A	-	N/A	-	N/A	-
<b>Royal Marines General Service</b>	<b>Total</b>	<b>870</b>	<b>15.2%</b>	<b>440</b>	<b>7.7%</b>	<b>520</b>	<b>9.0%</b>	<b>460</b>	<b>8.0%</b>	<b>480</b>	<b>8.6%</b>	<b>40</b>
	Voluntary Outflow	540	9.5%	220	3.9%	310	5.4%	260	4.6%	250	4.4%	20
	Other Wastage	180	3.2%	120	2.2%	120	2.1%	140	2.5%	160	2.9%	20
	Time Expiry	140	2.4%	70	1.3%	70	1.2%	40	0.7%	50	0.9%	~
	Promotion to Officer	10	0.1%	20	0.4%	20	0.3%	10	0.2%	20	0.3%	-
	Redundancy	-	0.0%	-	0.0%	-	0.0%	-	0.0%	-	0.0%	-
<b>Royal Marines Band Service</b>	<b>Total</b>	<b>20</b>	<b>5.3%</b>	<b>30</b>	<b>7.6%</b>	<b>20</b>	<b>7.3%</b>	<b>20</b>	<b>5.8%</b>	<b>20</b>	<b>4.7%</b>	<b>~</b>
	Voluntary Outflow	10	1.8%	10	2.6%	10	4.1%	10	2.6%	10	1.8%	~
	Other Wastage	~	1.5%	~	1.2%	-	0.0%	~	0.9%	~	1.5%	~
	Time Expiry	~	1.5%	10	3.2%	10	2.9%	10	2.0%	~	1.2%	-
	Promotion to Officer	~	0.6%	~	0.6%	~	0.3%	~	0.3%	~	0.3%	-
	Redundancy	-	0.0%	-	0.0%	-	0.0%	-	0.0%	-	0.0%	-
<b>Career</b>	<b>Total</b>	-	<b>N/A</b>	-	<b>N/A</b>	-	<b>N/A</b>	-	<b>N/A</b>	-	<b>N/A</b>	-
	Voluntary Outflow	-	N/A	-	N/A	-	N/A	-	N/A	-	N/A	-
	Other Wastage	-	N/A	-	N/A	-	N/A	-	N/A	-	N/A	-
	Time Expiry	-	N/A	-	N/A	-	N/A	-	N/A	-	N/A	-
	Promotion to Officer	-	N/A	-	N/A	-	N/A	-	N/A	-	N/A	-
	Redundancy	-	N/A	-	N/A	-	N/A	-	N/A	-	N/A	-

\* Total Figures in this table may deviate from those found in the UK Armed Forces Monthly Personnel Statistics. Please see the front pages for a comment on this.

Nov-16 Edition.

	2012/2013		2013/2014		2014/2015		2015/2016		12 Months to 1st Nov 16		Actual Oct 16
	Nos.	%	Nos.	%	Nos.	%	Nos.	%	Nos.	%	
<b>Total Officers</b>	<b>240</b>	<b>3.7%</b>	<b>260</b>	<b>4.3%</b>	<b>250</b>	<b>4.2%</b>	<b>240</b>	<b>4.1%</b>	<b>210</b>	<b>3.6%</b>	<b>20</b>
<b>Royal Navy Officers</b>											
<b>Total</b>	<b>200</b>	<b>3.7%</b>	<b>230</b>	<b>4.3%</b>	<b>230</b>	<b>4.4%</b>	<b>210</b>	<b>4.1%</b>	<b>180</b>	<b>3.5%</b>	<b>20</b>
OF9	-	-	-	-	-	-	-	-	-	-	-
OF8	-	-	-	-	-	-	-	-	-	-	-
OF7	-	-	-	-	-	-	~	3.7%	-	-	-
OF6	10	10.2%	10	13.9%	10	9.1%	~	2.9%	~	7.1%	-
OF5	10	5.3%	20	6.4%	20	8.1%	20	7.3%	10	5.8%	-
OF4	40	4.3%	40	4.8%	50	5.2%	30	3.8%	40	4.4%	~
OF3	70	3.9%	80	4.3%	80	4.4%	70	4.3%	60	3.3%	10
OF2	70	3.1%	80	3.7%	80	3.7%	80	4.1%	60	3.2%	10
OF1	-	-	-	-	~	1.0%	-	-	-	-	-
<b>Royal Marine Officers</b>											
<b>Total</b>	<b>30</b>	<b>4.1%</b>	<b>40</b>	<b>5.0%</b>	<b>20</b>	<b>2.9%</b>	<b>30</b>	<b>4.0%</b>	<b>30</b>	<b>4.0%</b>	<b>~</b>
OF9	-	-	-	-	-	-	-	-	-	-	-
OF8	-	-	-	-	-	-	-	-	-	-	-
OF7	-	-	-	-	-	-	-	-	-	-	-
OF6	~	27.3%	-	-	~	7.7%	~	15.2%	~	17.1%	~
OF5	-	-	~	5.8%	~	9.8%	~	9.2%	~	2.9%	~
OF4	10	5.1%	10	7.0%	-	-	~	4.0%	10	7.1%	~
OF3	10	3.9%	10	4.7%	~	1.7%	10	3.5%	10	3.5%	-
OF2	10	4.3%	20	5.2%	10	4.9%	10	4.6%	10	4.0%	-
OF1	-	-	-	-	-	-	-	-	-	-	-

\* Total Figures in this table may deviate from those found in the UK Armed Forces Monthly Personnel Statistics. Please see the front pages for a comment on this.

Nov-16 Edition.



**10b Trained Regular Royal Navy and Royal Marine Rating Voluntary Outflow Exits by Paid Rank\***

	2012/2013		2013/2014		2014/2015		2015/2016	
	Nos.	%	Nos.	%	Nos.	%	Nos.	%
<b>Total Ratings</b>	<b>1,610</b>	<b>6.2%</b>	<b>1,420</b>	<b>5.8%</b>	<b>1,490</b>	<b>6.2%</b>	<b>1,240</b>	<b>5.2%</b>
<b>Warfare (General Service)</b>								
<b>Total</b>	<b>320</b>	<b>6.6%</b>	<b>300</b>	<b>6.6%</b>	<b>310</b>	<b>7.0%</b>	<b>230</b>	<b>5.7%</b>
OR9	10	8.8%	~	3.3%	10	6.2%	10	6.4%
OR8	~	13.4%	~	9.3%	~	16.1%	~	32.9%
OR7	40	6.4%	20	4.2%	20	4.1%	20	4.3%
OR6	40	4.4%	30	3.5%	20	3.3%	20	3.4%
OR4	60	4.4%	60	5.2%	70	5.7%	50	4.9%
OR2	180	8.7%	180	9.8%	180	10.3%	120	7.4%
<b>Warfare (Submarine)</b>								
<b>Total</b>	<b>30</b>	<b>4.0%</b>	<b>30</b>	<b>4.0%</b>	<b>40</b>	<b>4.5%</b>	<b>20</b>	<b>3.3%</b>
OR9	~	11.5%	~	3.1%	-	-	~	3.2%
OR8	-	-	-	-	-	-	-	-
OR7	~	2.9%	10	7.2%	~	4.2%	~	3.7%
OR6	~	1.6%	~	3.4%	~	0.9%	-	-
OR4	~	2.3%	~	0.6%	~	1.8%	-	-
OR2	20	5.2%	20	4.9%	30	7.4%	20	5.7%
<b>Warfare (Air)</b>								
<b>Total</b>	<b>20</b>	<b>2.6%</b>	<b>40</b>	<b>5.0%</b>	<b>40</b>	<b>5.3%</b>	<b>30</b>	<b>5.0%</b>
OR9	~	3.1%	~	13.7%	10	21.9%	~	8.6%
OR8	-	-	-	-	-	-	-	-
OR7	~	5.7%	~	6.2%	10	10.0%	~	6.5%
OR6	~	1.9%	10	5.3%	~	3.4%	~	2.1%
OR4	~	1.7%	10	3.7%	~	2.5%	10	5.9%
OR3	-	-	-	-	-	-	-	-
OR2	10	2.9%	10	4.5%	10	5.4%	10	5.1%
<b>Engineering (General Service)</b>								
<b>Total</b>	<b>310</b>	<b>7.3%</b>	<b>430</b>	<b>10.9%</b>	<b>330</b>	<b>9.0%</b>	<b>250</b>	<b>6.3%</b>
OR9	20	12.3%	10	6.7%	10	5.6%	10	2.6%
OR8	30	12.8%	40	15.4%	10	15.3%	10	19.3%
OR7	50	5.5%	70	9.0%	50	7.2%	30	4.6%
OR6	50	7.0%	70	11.0%	50	9.7%	20	3.7%
OR4	50	5.6%	80	9.3%	70	9.2%	70	7.6%
OR2	120	8.0%	170	12.7%	120	9.7%	110	7.6%
<b>Engineering (Submarine)</b>								
<b>Total</b>	<b>110</b>	<b>5.2%</b>	<b>120</b>	<b>5.9%</b>	<b>140</b>	<b>7.1%</b>	<b>100</b>	<b>5.1%</b>
OR9	~	4.8%	~	1.7%	~	1.4%	~	1.1%
OR8	10	4.0%	~	1.2%	10	6.1%	~	0.7%
OR7	30	6.0%	40	7.9%	30	8.7%	20	5.7%
OR6	30	9.0%	30	11.9%	30	11.0%	10	4.6%
OR4	20	5.3%	20	5.8%	40	10.7%	40	8.1%
OR2	20	2.9%	20	3.8%	30	3.7%	30	4.5%
<b>Engineering (Air)</b>								
<b>Total</b>	<b>110</b>	<b>3.3%</b>	<b>120</b>	<b>4.0%</b>	<b>170</b>	<b>5.7%</b>	<b>180</b>	<b>6.0%</b>
OR9	~	5.5%	~	7.2%	~	3.9%	~	3.2%
OR8	~	2.0%	~	5.4%	~	2.8%	~	7.7%
OR7	20	3.5%	20	3.9%	30	6.5%	20	3.9%
OR6	20	3.0%	30	4.0%	30	4.5%	30	4.6%
OR4	20	3.1%	10	1.7%	30	3.3%	30	4.2%
OR2	40	3.6%	60	5.6%	80	8.1%	100	9.5%

12 Months to 1st Nov 16	
Nos.	%

Actual Oct 16
------------------

**1,120 4.8%**

**90**

<b>200</b>	<b>5.1%</b>
10	5.6%
~	50.0%
20	4.2%
20	2.4%
40	4.0%
110	7.2%
<b>20</b>	<b>2.8%</b>
~	3.3%
-	-
~	1.3%
-	-
~	1.7%
10	4.4%
<b>30</b>	<b>3.9%</b>
~	12.3%
-	-
~	1.3%
~	3.7%
~	3.1%
-	-
10	4.5%
<b>240</b>	<b>5.6%</b>
10	3.4%
~	7.6%
10	1.6%
20	2.4%
80	8.6%
120	7.4%
<b>80</b>	<b>3.8%</b>
~	2.8%
~	0.7%
10	2.6%
10	2.9%
40	8.6%
20	2.3%
<b>180</b>	<b>6.2%</b>
~	4.1%
~	12.2%
20	3.7%
30	4.3%
30	4.6%
100	9.8%

<b>10</b>
~
-
-
~
~
10
~
-
-
~
-
~
-
~
-
~
-
~
-
~
-
~
-
10

\* Total Figures in this table may deviate from those found in the UK Armed Forces Monthly Personnel Statistics. Please see the front pages for a comment on this.

**Nov-16 Edition.**

**10b Trained Regular Royal Navy and Royal Marine Rating Voluntary Outflow Exits by Paid Rank (continued)\***

	2012/2013		2013/2014		2014/2015		2015/2016		12 Months to 1st Nov 16		Actual
	Nos.	%	Nos.	%	Nos.	%	Nos.	%	Nos.	%	Oct 16
<b>Logistics</b>											
<b>Total</b>	<b>110</b>	<b>3.9%</b>	<b>110</b>	<b>4.3%</b>	<b>110</b>	<b>4.4%</b>	<b>110</b>	<b>4.5%</b>	<b>100</b>	<b>3.9%</b>	<b>10</b>
OR9	~	6.5%	~	8.7%	~	1.6%	~	8.1%	~	6.3%	-
OR8	-	-	-	-	-	-	-	-	-	-	-
OR7	10	4.1%	10	5.5%	~	2.2%	10	4.3%	10	2.6%	~
OR6	10	2.1%	10	3.5%	10	2.0%	10	2.0%	10	1.5%	-
OR4	30	3.4%	20	3.2%	30	4.5%	20	2.0%	10	1.9%	~
OR3	-	-	-	-	-	-	~	14.3%	-	-	-
OR2	60	4.5%	60	4.9%	60	5.7%	70	6.8%	70	6.4%	~
<b>Medical</b>											
<b>Total</b>	<b>50</b>	<b>5.1%</b>	<b>40</b>	<b>4.8%</b>	<b>40</b>	<b>4.4%</b>	<b>40</b>	<b>4.9%</b>	<b>40</b>	<b>4.6%</b>	<b>~</b>
OR9	~	11.2%	~	11.1%	~	3.6%	~	6.8%	~	3.4%	-
OR8	-	-	-	-	-	-	-	-	~	218.2%	-
OR7	~	3.3%	~	4.3%	10	5.1%	10	6.0%	~	4.3%	-
OR6	~	2.8%	~	1.7%	10	4.7%	10	4.9%	~	2.5%	-
OR4	20	5.6%	20	7.2%	10	4.3%	10	2.6%	10	2.3%	-
OR3	-	-	-	-	-	-	-	-	-	-	-
OR2	20	6.4%	10	4.1%	10	4.3%	20	6.6%	20	7.8%	~
<b>Royal Marines General Service</b>											
<b>Total</b>	<b>540</b>	<b>9.5%</b>	<b>220</b>	<b>3.9%</b>	<b>310</b>	<b>5.4%</b>	<b>260</b>	<b>4.6%</b>	<b>250</b>	<b>4.4%</b>	<b>20</b>
OR9	10	10.2%	~	1.2%	~	3.5%	~	2.3%	-	-	-
OR8	10	4.0%	10	3.9%	~	1.3%	10	2.7%	10	3.1%	~
OR7	20	3.9%	10	1.9%	10	1.6%	~	1.1%	10	1.6%	-
OR6	30	5.3%	10	1.1%	~	0.7%	10	1.8%	10	1.1%	~
OR4	140	12.7%	30	2.5%	30	2.8%	30	3.0%	20	2.4%	~
OR3	20	3.0%	20	2.6%	20	3.5%	20	3.5%	20	3.5%	~
OR2	330	11.8%	160	5.6%	240	8.5%	180	6.7%	180	6.9%	10
<b>Royal Marines Band Service</b>											
<b>Total</b>	<b>10</b>	<b>1.8%</b>	<b>10</b>	<b>2.6%</b>	<b>10</b>	<b>4.1%</b>	<b>10</b>	<b>2.6%</b>	<b>10</b>	<b>1.8%</b>	<b>~</b>
OR9	-	-	-	-	-	-	-	-	-	-	-
OR8	-	-	-	-	~	8.2%	-	-	-	-	-
OR7	-	-	-	-	~	3.2%	-	-	-	-	-
OR6	-	-	~	3.9%	~	2.1%	~	2.0%	-	-	-
OR4	-	-	~	1.7%	-	-	~	1.6%	~	6.9%	-
OR3	-	-	-	-	-	-	-	-	-	-	-
OR2	10	3.3%	10	3.3%	10	5.9%	10	3.8%	~	1.1%	~

\* Total Figures in this table may deviate from those found in the UK Armed Forces Monthly Personnel Statistics. Please see the front pages for a comment on this.

11a Trained Regular Royal Navy and Royal Marine Officer Promotions to Substantive Rank					
	2012/2013	2013/2014	2014/2015	2015/2016	12 Months to 1st Nov 16
<b>Total Officers</b>	<b>490</b>	<b>510</b>	<b>560</b>	<b>600</b>	<b>540</b>
OF7 and Above	10	10	10	10	10
OF6	20	20	30	10	20
OF5	30	50	70	50	40
OF4	100	90	110	130	130
OF3	210	220	240	290	240
OF2	120	120	100	100	100

11b Trained Regular Royal Navy and Royal Marine Rating and Other Rank Promotions to Substantive Rank					
	2012/2013	2013/2014	2014/2015	2015/2016	12 Months to 1st Nov 16
<b>Total Ratings</b>	<b>1,530</b>	<b>2,660</b>	<b>1,990</b>	<b>2,500</b>	<b>2,340</b>
OR9	30	110	80	260	190
OR8	30	150	100	150	90
OR7	300	420	360	440	370
OR6	410	740	560	670	650
OR4	760	1,220	900	990	1,030
OR3	~	-	-	-	~

Nov-16 Edition.

**12a Gains to the Trained Regular Royal Navy and Royal Marines Officer Strength from Untrained by Branch**

		2012/2013	2013/2014	2014/2015	2015/2016	12 Months to 1st Nov 16
<b>Royal Navy</b>	Officers					
	<b>Total</b>	<b>290</b>	<b>240</b>	<b>280</b>	<b>250</b>	<b>280</b>
<b>Royal Marines</b>	Officers					
	<b>Total</b>	<b>50</b>	<b>50</b>	<b>60</b>	<b>60</b>	<b>60</b>
	Warfare	140	110	140	100	120
	Engineer	100	80	100	80	80
	Logistics	20	20	30	20	30
	Medical	20	20	20	40	30
	Chaplain	~	~	-	10	10
	Other	-	-	-	-	-
	Royal Marines General Service	50	50	60	60	60
	Royal Marines Band Service	~	-	-	~	~

		Nov-15	Dec-15	Jan-16	Feb-16	Mar-16	Apr-16	May-16	Jun-16	Jul-16	Aug-16	Sep-16	Oct-16
<b>Royal Navy</b>	Officers												
	<b>Total</b>	~	30	20	20	20	40	40	40	~	~	60	~
<b>Royal Marines</b>	Officers												
	<b>Total</b>	-	40	~	10	-	-	-	-	-	-	-	-
	Warfare	~	20	~	10	10	20	20	10	~	~	30	~
	Engineer	~	10	20	10	10	~	10	10	-	~	10	~
	Logistics	-	-	-	-	-	10	~	10	-	-	10	-
	Medical	-	~	-	-	-	10	10	~	-	-	~	-
	Chaplain	-	-	-	~	-	-	-	-	-	-	~	-
	Other	-	-	-	-	-	-	-	-	-	-	-	-
	Royal Marines General Service	-	40	-	10	-	-	-	-	-	-	-	-
	Royal Marines Band Service	-	-	-	~	-	-	-	-	-	-	-	-

12b

## Gains to the Trained Regular Royal Navy and Royal Marine Rating Strength from Untrained by Branch and Specialisation

		2012/2013	2013/2014	2014/2015	2015/2016	12 Months to 1st Nov 16
<b>Royal Navy</b>	<b>Ratings</b>					
	<b>Total</b>	<b>980</b>	<b>1,230</b>	<b>1,580</b>	<b>1,440</b>	<b>1,310</b>
<b>Royal Marines</b>	<b>Other Ranks</b>					
	<b>Total</b>	<b>540</b>	<b>650</b>	<b>520</b>	<b>360</b>	<b>340</b>
<b>Warfare</b>	<b>Total</b>	<b>270</b>	<b>310</b>	<b>450</b>	<b>400</b>	<b>370</b>
<b>(General Service)</b>	Warfare Specialist (WS)	120	120	160	140	60
	WS (Above Water Tactical)	-	-	-	20	80
	WS (Above Water Warfare)	-	-	-	-	-
	WS (Electronic Warfare)	-	-	-	-	-
	WS (Under Water)	-	-	-	-	-
	Comms Info Systems Specialist	40	40	80	10	-
	Hydrographic/Meteorological (H/M)	20	20	20	20	10
	H/M (Hydrographic)	-	-	-	-	10
	H/M (Meteorological)	-	-	-	-	-
	Mine Warfare	40	50	50	40	50
	Diver	20	30	30	30	30
	Seaman Specialist	20	40	100	110	110
	Naval Airman (Photographer)	-	-	-	-	-
	Physical Training Instructor	-	-	-	-	-
	Royal Navy Police	-	-	-	-	-
	Communications Technician	10	10	10	20	20
	Unspecified	-	-	-	-	-
<b>Warfare</b>	<b>Total</b>	<b>40</b>	<b>50</b>	<b>80</b>	<b>60</b>	<b>40</b>
<b>(Submarine)</b>	Coxswain (Submarines)	-	-	-	-	-
	Warfare Specialist (Sensors Submarines)	20	30	40	20	10
	Warfare Specialist (Tactical Submarines)	10	10	20	30	20
	Comms Info Systems Spec (Submarines)	10	10	20	10	-
	Unspecified	-	-	-	-	-
<b>Warfare (Air)</b>	<b>Total</b>	<b>20</b>	<b>30</b>	<b>70</b>	<b>60</b>	<b>70</b>
	Aircrewman	-	-	-	-	-
	Naval Airman (Aircraft Control)	10	-	10	10	10
	Naval Airman (Aircraft Handler)	10	30	60	50	60
	Royal Marines Aircrewman	-	-	-	-	-
	Unspecified	-	-	-	-	-
<b>Engineering</b>	<b>Total</b>	<b>210</b>	<b>310</b>	<b>350</b>	<b>370</b>	<b>330</b>
<b>(General Service)</b>	Marine Engineer Mechanic	-	-	-	-	-
	Weapon Engineer Mechanic	-	-	-	-	-
	Engineer Technician (Marine Engineer)	150	200	190	200	200
	Engineer Technician (Weapon Engineer)	60	120	160	170	140
	Unspecified	-	-	-	-	-
<b>Engineering</b>	<b>Total</b>	<b>130</b>	<b>150</b>	<b>190</b>	<b>130</b>	<b>140</b>
<b>(Submarine)</b>	Marine Engineer Mechanic	-	-	-	-	-
	Weapon Engineer Mechanic	-	-	-	-	-
	Engineer Technician (Marine Engineer Sub)	90	90	110	60	80
	Engineer Tech (Weapon Engineer Sub)	40	70	80	70	60
<b>Engineering (Air)</b>	<b>Total</b>	<b>100</b>	<b>190</b>	<b>200</b>	<b>210</b>	<b>180</b>
	Air Engineer Artificer	-	-	-	-	-
	Air Engineer Mechanic	-	-	-	-	-
	Air Engineer Technician	100	180	190	200	170
	Naval Airman (Survival Equipment)	-	10	10	10	10
	Unspecified	-	-	-	-	-
<b>Logistics</b>	<b>Total</b>	<b>140</b>	<b>120</b>	<b>180</b>	<b>160</b>	<b>140</b>
	Caterer	-	-	-	-	-
	Chef	40	50	90	50	40
	Steward	20	30	10	20	20
	Supply Chain	30	30	40	50	40
	Writer	50	20	30	50	40
	Family Service	-	-	-	-	-
	Unspecified	-	-	-	-	-
<b>Medical</b>	<b>Total</b>	<b>60</b>	<b>60</b>	<b>60</b>	<b>50</b>	<b>40</b>
	Dental Hygienist	-	-	-	-	-
	Dental Surgery Assistant	-	-	-	-	10
	Medical Assistant	40	50	40	40	20
	Naval Nurse	10	-	20	10	10
	Medical Technician	-	-	-	-	-
	Royal Marines Medical Assistant	-	-	-	-	-
	Unspecified	-	-	-	-	-
<b>RM General Service Total</b>	<b>Total</b>	<b>520</b>	<b>630</b>	<b>490</b>	<b>350</b>	<b>330</b>
<b>RM Band Service</b>	<b>Total</b>	<b>20</b>	<b>20</b>	<b>30</b>	<b>20</b>	<b>20</b>
	Band	20	20	30	10	10
	Bugler	-	10	-	-	-

**12b Gains to the Trained Regular Royal Navy and Royal Marines Rating Strength from Untrained by Branch and Specialisation (Cont)**

		Nov-15	Dec-15	Jan-16	Feb-16	Mar-16	Apr-16	May-16	Jun-16	Jul-16	Aug-16	Sep-16	Oct-16
<b>Royal Navy</b>	Ratings												
	<b>Total</b>	<b>130</b>	<b>120</b>	<b>100</b>	<b>110</b>	<b>120</b>	<b>80</b>	<b>50</b>	<b>200</b>	<b>120</b>	<b>10</b>	<b>160</b>	<b>110</b>
<b>Royal Marines</b>	Other Ranks												
	<b>Total</b>	<b>20</b>	<b>20</b>	<b>20</b>	<b>40</b>	-	<b>40</b>	-	<b>60</b>	<b>50</b>	-	<b>70</b>	<b>30</b>
<b>Warfare (General Service)</b>	<b>Total</b>	<b>50</b>	<b>30</b>	<b>20</b>	<b>50</b>	<b>40</b>	-	<b>20</b>	<b>50</b>	<b>40</b>	-	<b>40</b>	<b>20</b>
	Warfare Specialist (WS)	10	10	10	10	10	-	10	-	-	-	-	-
	WS (Above Water Tactical)	-	-	-	10	10	-	10	10	10	-	30	-
	WS (Above Water Warfare)	-	-	-	-	-	-	-	-	-	-	-	-
	WS (Under Water)	-	-	-	-	-	-	-	-	-	-	-	-
	WS (Electronic Warfare)	-	-	-	-	-	-	-	-	-	-	-	-
	Comms Info Systems Specialist	-	-	-	-	-	-	-	-	-	-	-	-
	Hydrographic/Meteorological (H/M)	-	-	-	10	-	-	-	-	-	-	-	-
	H/M (Hydrographic)	-	-	-	-	-	-	-	-	10	-	-	-
	H/M (Meteorological)	-	-	-	-	-	-	-	-	-	-	-	-
	Mine Warfare	10	10	-	10	10	-	-	10	-	-	-	10
	Diver	10	-	-	10	-	-	-	10	10	-	-	-
	Seaman Specialist	10	10	-	10	20	-	10	10	10	-	10	10
	Naval Airman (Photographer)	-	-	-	-	-	-	-	-	-	-	-	-
	Physical Training Instructor	-	-	-	-	-	-	-	-	-	-	-	-
	Royal Navy Police	-	-	-	-	-	-	-	-	-	-	-	-
	Communications Technician	10	-	-	-	-	-	-	10	-	-	-	-
	Unspecified	-	-	-	-	-	-	-	-	-	-	-	-
<b>Warfare (Submarine)</b>	<b>Total</b>	-	-	-	-	-	<b>10</b>	-	<b>10</b>	<b>10</b>	-	-	-
	Coxswain (Submarines)	-	-	-	-	-	-	-	-	-	-	-	-
	Warfare Specialist (Sensors Submarines)	-	-	-	-	-	-	-	-	-	-	-	-
	Warfare Specialist (Tactical Submarines)	-	-	-	-	-	-	-	10	10	-	-	-
	Comms Info Sys Specialist (Submarines)	-	-	-	-	-	-	-	-	-	-	-	-
	Unspecified	-	-	-	-	-	-	-	-	-	-	-	-
<b>Warfare (Air)</b>	<b>Total</b>	<b>20</b>	-	<b>10</b>	-	<b>20</b>	-	-	<b>20</b>	-	-	-	-
	Aircrewman	-	-	-	-	-	-	-	-	-	-	-	-
	Naval Airman (Aircraft Control)	-	-	10	-	-	-	-	-	-	-	-	-
	Naval Airman (Aircraft Handler)	20	-	-	-	20	-	-	20	-	-	-	-
	Royal Marines Aircrewman	-	-	-	-	-	-	-	-	-	-	-	-
	Unspecified	-	-	-	-	-	-	-	-	-	-	-	-
<b>Engineering (General Service)</b>	<b>Total</b>	<b>40</b>	<b>40</b>	<b>10</b>	<b>20</b>	<b>20</b>	<b>10</b>	<b>10</b>	<b>60</b>	<b>30</b>	-	<b>60</b>	<b>30</b>
	Marine Engineer Mechanic	-	-	-	-	-	-	-	-	-	-	-	-
	Weapon Engineer Mechanic	-	-	-	-	-	-	-	-	-	-	-	-
	Engineer Technician (Marine Engineer)	20	20	-	20	20	10	-	40	10	-	30	20
	Engineer Technician (Weapon Engineer)	20	10	10	-	-	-	10	10	20	-	30	10
	Unspecified	-	-	-	-	-	-	-	-	-	-	-	-
<b>Engineering (Submarine)</b>	<b>Total</b>	-	<b>10</b>	<b>30</b>	-	-	<b>20</b>	-	<b>30</b>	<b>20</b>	-	<b>10</b>	<b>20</b>
	Marine Engineer Mechanic	-	-	-	-	-	-	-	-	-	-	-	-
	Weapon Engineer Mechanic	-	-	-	-	-	-	-	-	-	-	-	-
	Engineer Technician (Marine Engineer Sub)	-	-	20	-	-	20	-	20	20	-	10	10
	Engineer Tech (Weapon Engineer Sub)	-	10	10	-	-	10	-	10	-	-	-	10
<b>Engineering (Air)</b>	<b>Total</b>	<b>20</b>	<b>20</b>	<b>20</b>	<b>20</b>	<b>10</b>	<b>20</b>	<b>10</b>	<b>10</b>	<b>20</b>	-	<b>20</b>	<b>20</b>
	Air Engineer Artificer	-	-	-	-	-	-	-	-	-	-	-	-
	Air Engineer Mechanic	-	-	-	-	-	-	-	-	-	-	-	-
	Air Engineer Technician	20	20	10	20	10	20	10	10	20	-	20	20
	Naval Airman (Survival Equipment)	-	-	10	-	-	-	-	-	-	-	-	-
	Unspecified	-	-	-	-	-	-	-	-	-	-	-	-
<b>Logistics</b>	<b>Total</b>	-	<b>20</b>	<b>10</b>	<b>10</b>	<b>10</b>	<b>20</b>	<b>10</b>	<b>20</b>	<b>10</b>	-	<b>20</b>	-
	Caterer	-	-	-	-	-	-	-	-	-	-	-	-
	Chef	-	10	10	-	-	-	-	-	10	-	-	-
	Steward	-	-	-	-	10	-	-	-	-	-	-	-
	Supply Chain	-	-	-	10	-	10	-	10	-	-	10	-
	Writer	-	10	-	-	-	10	-	10	-	-	10	-
	Family Service	-	-	-	-	-	-	-	-	-	-	-	-
	Unspecified	-	-	-	-	-	-	-	-	-	-	-	-
<b>Medical</b>	<b>Total</b>	-	<b>10</b>	-	-	-	-	-	-	-	-	<b>10</b>	-
	Dental Hygienist	-	-	-	-	-	-	-	-	-	-	-	-
	Dental Surgery Assistant	-	-	-	-	-	-	-	-	-	-	-	-
	Medical Assistant	-	-	-	-	-	-	-	-	-	-	10	-
	Naval Nurse	-	-	-	-	-	-	-	-	-	-	-	-
	Medical Technician	-	-	-	-	-	-	-	-	-	-	-	-
	Royal Marines Medical Assistant	-	-	-	-	-	-	-	-	-	-	-	-
	Unspecified	-	-	-	-	-	-	-	-	-	-	-	-
<b>RM General Service Total</b>		<b>20</b>	<b>20</b>	<b>20</b>	<b>40</b>	-	<b>40</b>	-	<b>60</b>	<b>50</b>	-	<b>60</b>	<b>30</b>
<b>RM Band Service</b>	<b>Total</b>	-	-	-	-	-	-	-	-	-	-	<b>10</b>	-
	Band	-	-	-	-	-	-	-	-	-	-	10	-
	Bugler	-	-	-	-	-	-	-	-	-	-	-	-

	2012/2013	2013/2014	2014/2015	2015/2016	12 Months to 1st Nov 16	Actual Oct 16
<b>Total Officers</b>	<b>10</b>	<b>~</b>	<b>10</b>	<b>20</b>	<b>10</b>	<b>~</b>
Warfare	~	~	~	~	-	-
Engineer	~	~	~	~	~	-
Logistics	~	-	-	-	~	~
Medical	-	~	~	10	~	-
Chaplain	-	~	~	-	-	-
Royal Marines General Service	~	~	~	~	~	-
Royal Marines Band Service	-	-	-	-	-	-
No Value	-	-	-	-	-	-
<b>Total Ratings</b>	<b>60</b>	<b>70</b>	<b>60</b>	<b>80</b>	<b>90</b>	<b>10</b>
Warfare (General Service)	20	10	10	20	20	~
Warfare (Submarine)	-	-	~	~	~	-
Warfare (Air)	~	~	~	~	~	-
Engineering (General Service)	~	10	~	20	20	~
Engineering (Submarine)	-	~	~	~	10	-
Engineering (Air)	~	10	~	~	~	~
Logistics	~	~	10	10	20	-
Medical	~	~	10	10	10	-
Royal Marines General Service	20	30	10	~	10	~
Royal Marines Band Service	~	~	-	-	-	-
No Value	-	-	-	~	~	-

The figures above show trained intake to the regular strength from Civil Life, from Another Service, from LTA, To Other Ranks from Officer and To Officer from Other Ranks

**Nov-16 Edition.**