

HAMPSHIRE COUNTY COUNCIL

WILDLIFE AND COUNTRYSIDE ACT 1981

THE HAMPSHIRE DEFINITIVE MAP AND STATEMENT OF PUBLIC RIGHTS OF WAY (DATED 15TH DECEMBER 2007)

THE HAMPSHIRE (TEST VALLEY BOROUGH No. 53)
(PARISH OF CHILWORTH)
DEFINITIVE MAP MODIFICATION ORDER 2013

This Order is made by Hampshire County Council under Section 53(2)(b) of the Wildlife and Countryside Act 1981 ("the Act") because it appears to that authority that The Definitive Map and Statement of Public Rights of Way (Dated 15th December 2007) requires modification in consequence of the occurrence of an event specified in Section 53(3)(c)(ii) of the Act namely:-

The discovery by the authority of evidence which (when considered with all other relevant evidence available to them) shows

- (ii) that a highway shown in the map and statement as a highway of a particular description ought to be there shown as a highway of a different description;

The authority has consulted with every local authority whose area includes the land to which the Order relates.

Hampshire County Council hereby orders that:

1. For the purposes of the Order the relevant date is 5 December 2013.
2. The Hampshire Definitive Map and Statement of Public Rights of Way (Dated 15th December 2007) shall be modified as described in Part I and Part II of the Schedule as shown on the maps attached to the Order.
3. This Order shall take effect on the date it is made and may be cited as The Hampshire (Test Valley Borough No. 53)(Parish of Chilworth) Definitive Map Modification Order 2013.

GIVEN this 11th day of December 2013

THE COMMON SEAL of)
HAMPSHIRE COUNTY COUNCIL)
Was hereunto affixed in)
The presence of:-)

Authorised Signatory





36/5447

SCHEDULE

PART I

DESCRIPTION OF PUBLIC RIGHT OF WAY TO BE UPGRADED TO RESTRICTED BYWAY

From GR SU 4073 1828 to GR SU 4069 1799

That part of Chilworth Bridleway 2 (Chilworth Drove), which commences at a junction with U97, Manor Road (Point A), and runs in a southerly direction, to the bridge over the M27 motorway (Point B), as shown on the plan accompanying the Order.

A total length of 300 metres.

From GR SU 4070 1785 to GR SU 4058 1658

The entire length of Chilworth Footpath 3 (Lordswood Lane), which commences at a junction with Chilworth Bridleway 2 at the southern end of the bridge over the M27 motorway (Point C), and runs in a southerly direction to the County Boundary with Southampton City, and a junction with Southampton Restricted Byway 20, Coxford Road (Point E).

A total length of 1,310 metres.

PART II

MODIFICATION OF DEFINITIVE STATEMENT VARIATION OF PARTICULARS OF PATHS OR WAYS

The following addition shall be made to the Definitive Statement for the Parish of Chilworth:

Chilworth 2a	Restricted Byway	GR SU 4073 1828 to GR SU 4069 1799 6 metres wide
Chilworth 2b	Bridleway	GR SU 4069 1799 to GR SU 3996 1669
Chilworth 3	Restricted Byway	GR SU 4070 1785 to GR SU 4058 1658 3 metres wide

NOTE: ALL LENGTHS ARE APPROXIMATE

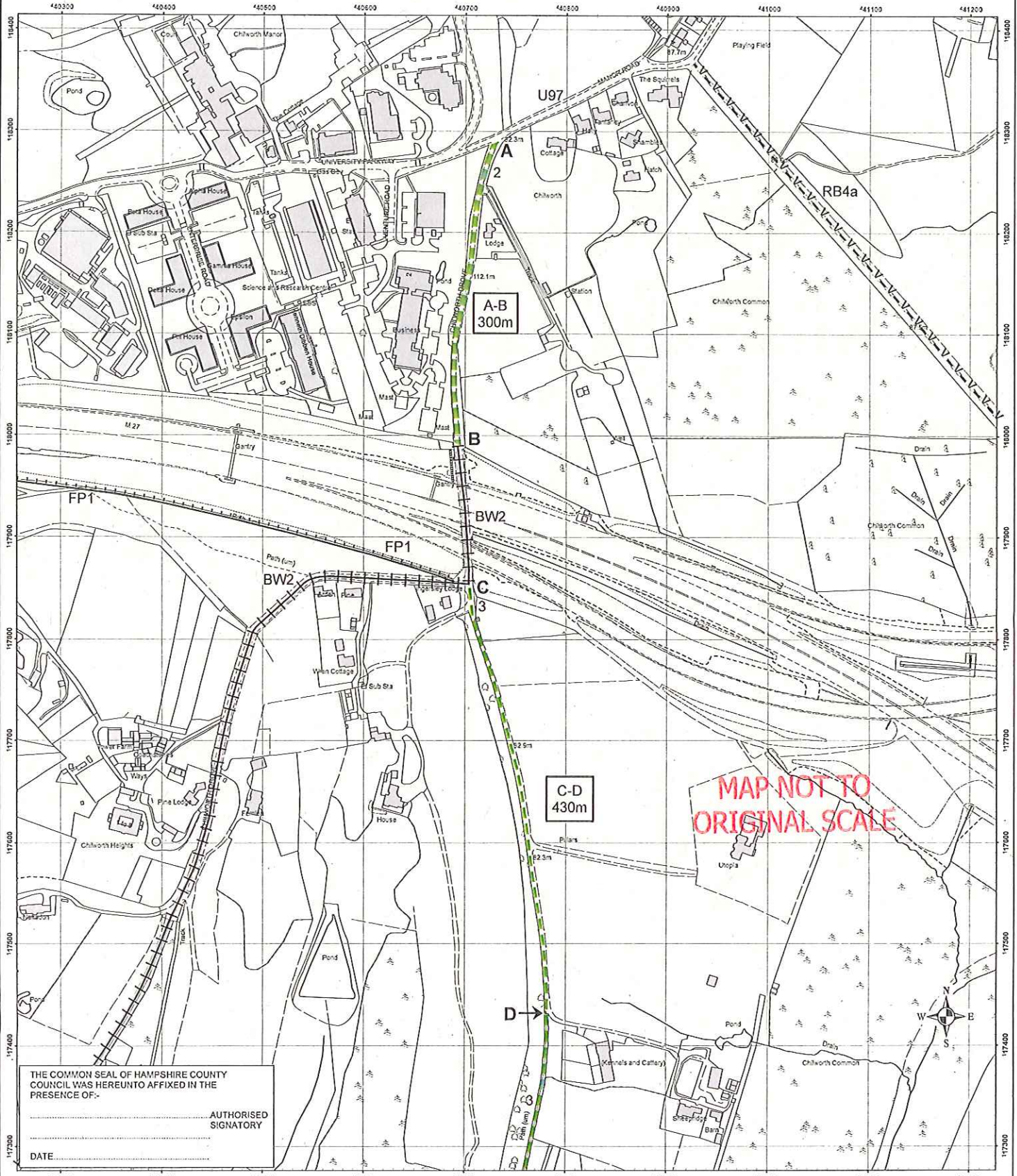
HAMPSHIRE COUNTY COUNCIL

WILDLIFE AND COUNTRYSIDE ACT 1981

MAP REFERRED TO IN THE HAMPSHIRE

(TEST VALLEY BOROUGH No.53) (PARISH OF CHILWORTH)
DEFINITIVE MAP MODIFICATION ORDER 2013

MAP NOT TO
ORIGINAL SCALE



MAP NOT TO
ORIGINAL SCALE

THE COMMON SEAL OF HAMPSHIRE COUNTY COUNCIL WAS HEREUNTO AFFIXED IN THE PRESENCE OF:-
 _____ AUTHORIZED SIGNATORY

 DATE _____

LEGEND SCALE 1:2500

ROUTE TO BE RECORDED AS RESTRICTED BYWAY (6 metres wide between points A and B) SHOWN:-

ROUTE TO BE RECORDED AS RESTRICTED BYWAY (3 metres wide between points C - D - E) SHOWN:-

EXISTING FOOTPATH TO BE RETAINED SHOWN:-

EXISTING BRIDLEWAY TO BE RETAINED SHOWN:-

EXISTING RESTRICTED BYWAY TO BE RETAINED SHOWN:-

REPRODUCED FROM THE O.S. MAPPING WITH THE PERMISSION OF THE CONTROLLER OF HMSO © CROWN. UNAUTHORISED REPRODUCTION INFRINGES © CROWN AND MAY LEAD TO PROSECUTION OR CIVIL PROCEEDINGS. HCC LICENCE No.100019160 DATE 25.11.13

KAREN MURRAY,
DIRECTOR OF CULTURE, COMMUNITIES AND BUSINESS SERVICES, WINCHESTER

MAP No.451 PRODUCED FROM DIGITAL DATA SUPPLIED BY ORDNANCE SURVEY

MAP NOT TO ORIGINAL SCALE

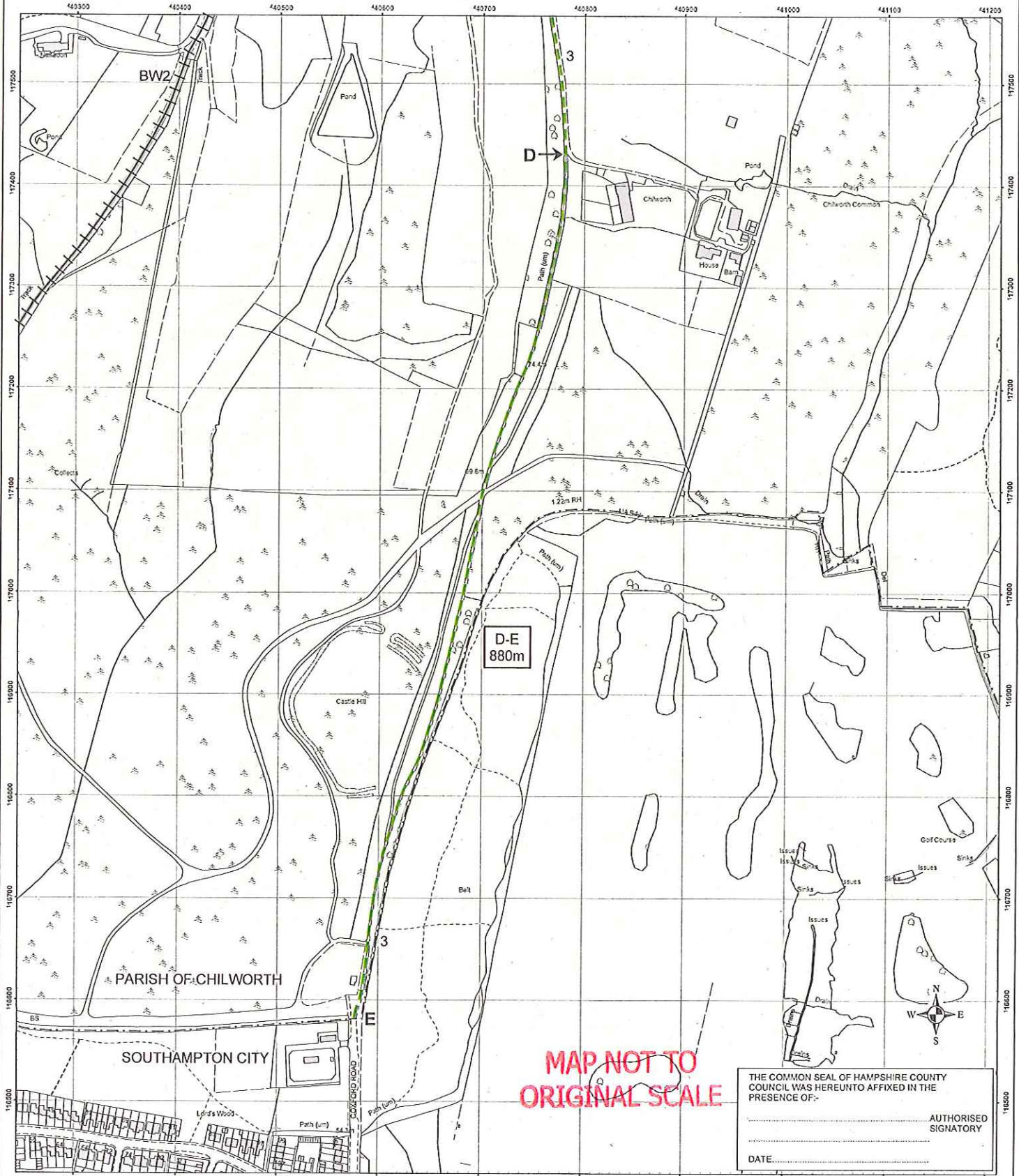
HAMPSHIRE COUNTY COUNCIL

WILDLIFE AND COUNTRYSIDE ACT 1981

MAP REFERRED TO IN THE HAMPSHIRE

(TEST VALLEY BOROUGH No.53) (PARISH OF CHILWORTH)

DEFINITIVE MAP MODIFICATION ORDER 2013



MAP NOT TO ORIGINAL SCALE

THE COMMON SEAL OF HAMPSHIRE COUNTY COUNCIL WAS HERETO AFFIXED IN THE PRESENCE OF:-

..... AUTHORIZED SIGNATORY

DATE:

LEGEND SCALE 1:2500

ROUTE TO BE RECORDED AS RESTRICTED BYWAY (6 metres wide between points A and B) SHOWN:-

ROUTE TO BE RECORDED AS RESTRICTED BYWAY (3 metres wide between points C - D - E) SHOWN:-

EXISTING FOOTPATH TO BE RETAINED SHOWN:-

EXISTING BRIDLEWAY TO BE RETAINED SHOWN:-

EXISTING RESTRICTED BYWAY TO BE RETAINED SHOWN:-

REPRODUCED FROM THE O.S. MAPPING WITH THE PERMISSION OF THE CONTROLLER OF HMSO © CROWN. UNAUTHORISED REPRODUCTION INFRINGES © CROWN AND MAY LEAD TO PROSECUTION OR CIVIL PROCEEDINGS. HCC LICENCE No.100919180 DATE 11.12.13

KAREN MURRAY,
DIRECTOR OF CULTURE, COMMUNITIES AND BUSINESS SERVICES, WINCHESTER

MAP No.451 PRODUCED FROM DIGITAL DATA SUPPLIED BY ORDNANCE SURVEY