

This content is no longer current and was archived on 28 June 2016.

For latest information from DCYP please visit:

<https://www.gov.uk/government/groups/directorate-children-and-young-people>.

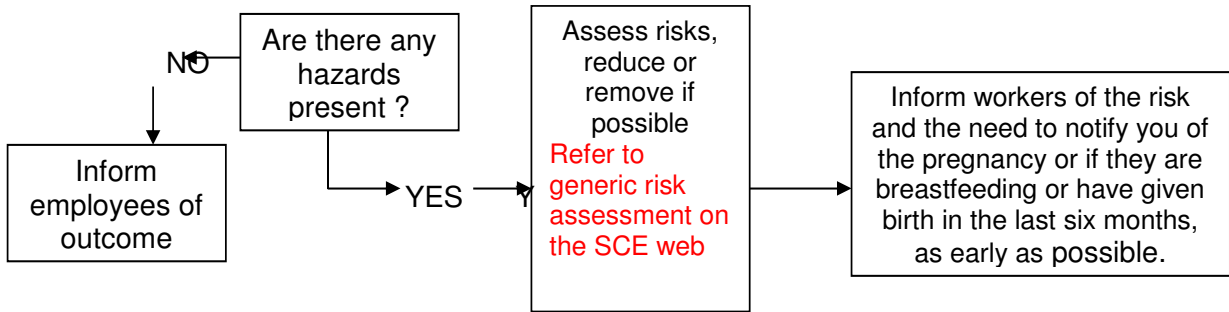
For latest information from SCE please visit:

<https://www.gov.uk/government/collections/service-childrens-education>.

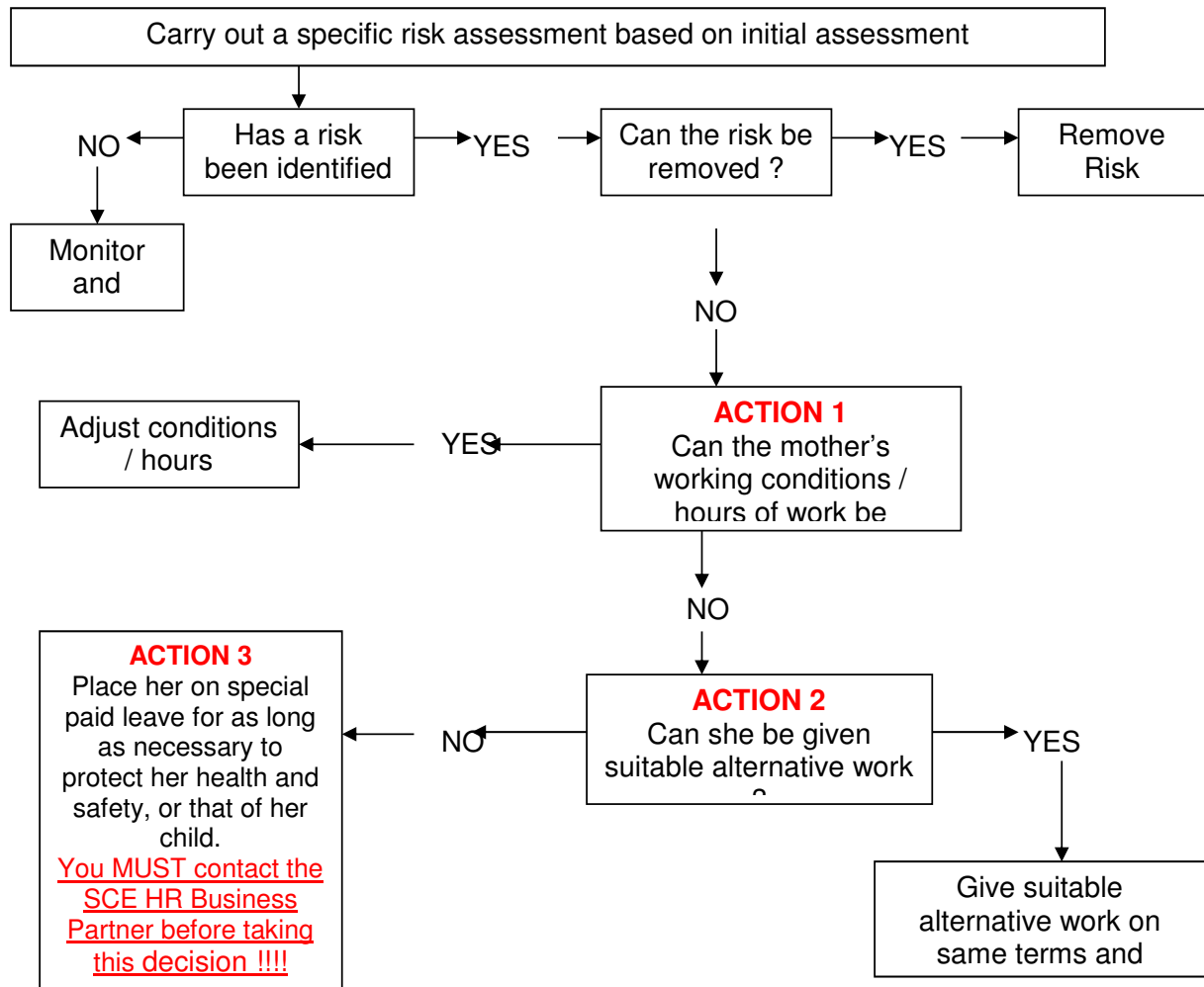
ANNEX A TO LEAFLET 9 TO PART 3 TO SHEF MANUAL

New and Expectant Mothers at Work - A Guide for Employers

STAGE ONE – INITIAL RISK ASSESSMENT



STAGE TWO – ON NOTIFICATION OF PREGNANCY, BIRTH OR BREASTFEEDING



ALL OF THE ABOVE ACTIONS SHOULD BE MONITORED AND REVIEWED ON A REGULAR