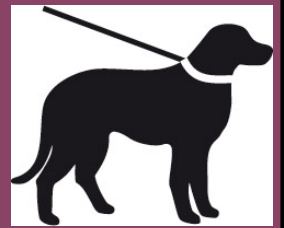


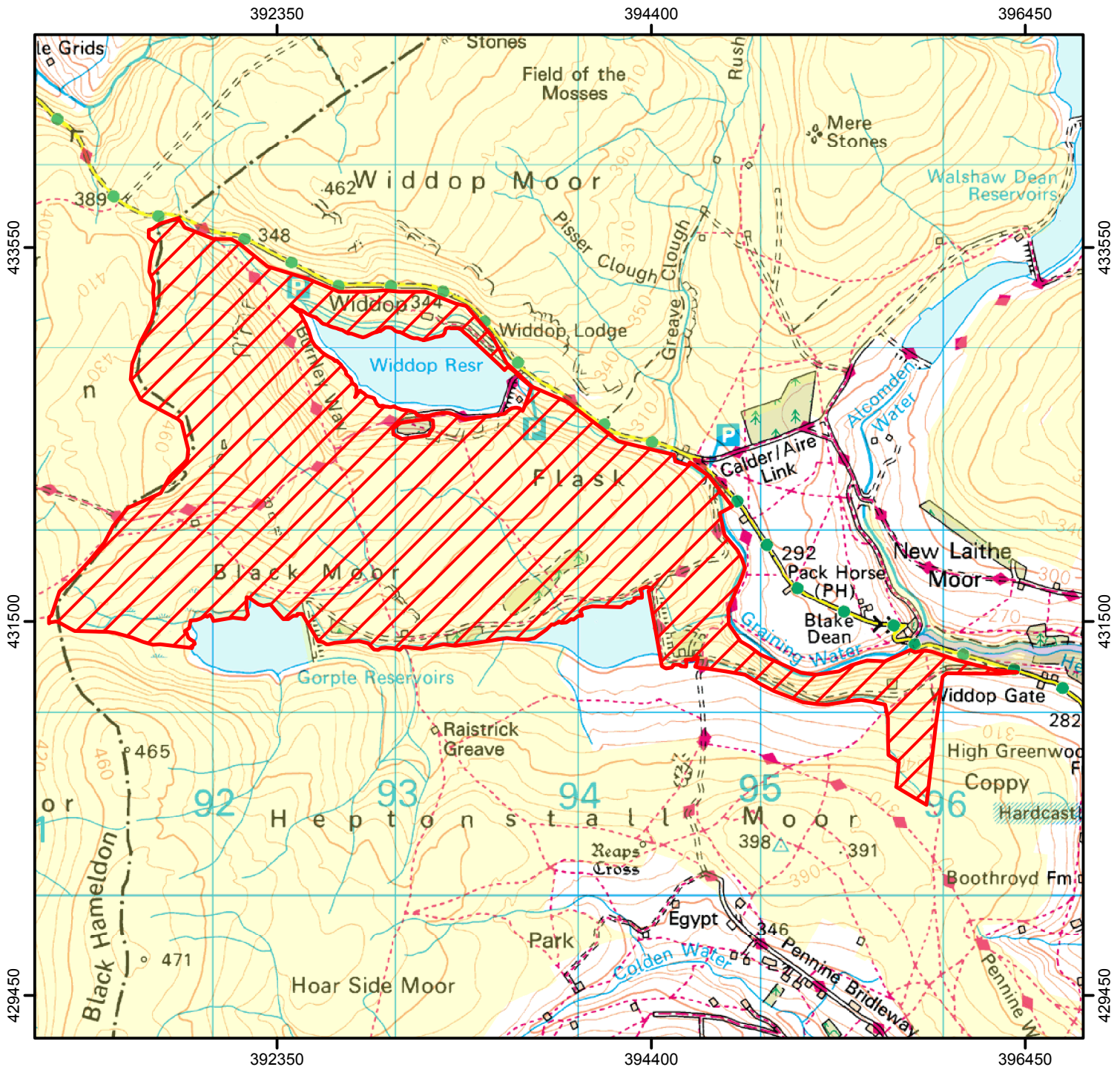
# DOGS MUST BE ON A SHORT LEAD



To avoid disturbance to game birds, dogs must be kept on a short lead on the open access land shown hatched on the map below. This does not affect Public Rights of Way

From: 1 March to 10 December (each year until 2020)

Case Number: 2004120067



0 250 500 1,000 1,500 2,000 Metres

© Crown Copyright and database right 2014. Ordnance Survey 100022021

Restricted Open Access Land

Open Access Land

For more information call the Open Access Contact Centre on 0845 100 3298 or visit our website at [www.naturalengland.org.uk/openaccess](http://www.naturalengland.org.uk/openaccess)