



Intellectual
Property
Office

Eight Great Technologies Satellites

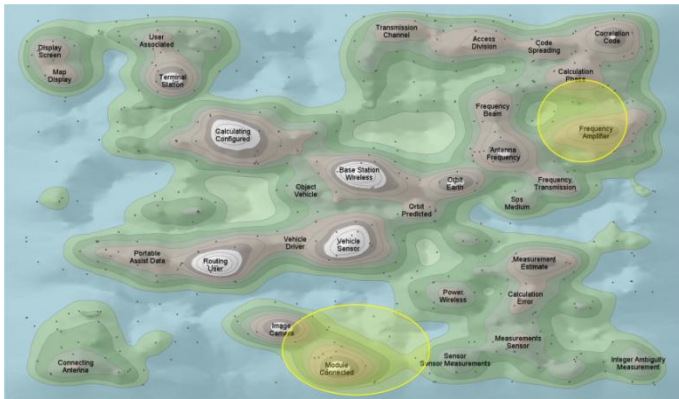
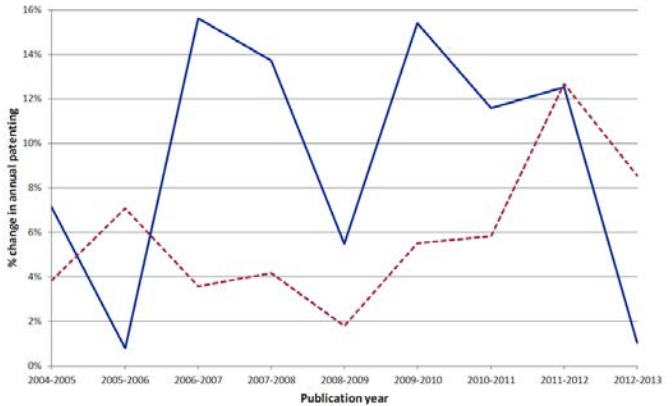
85,000

published patent
applications
(2004-2013)

which relate to

22,000

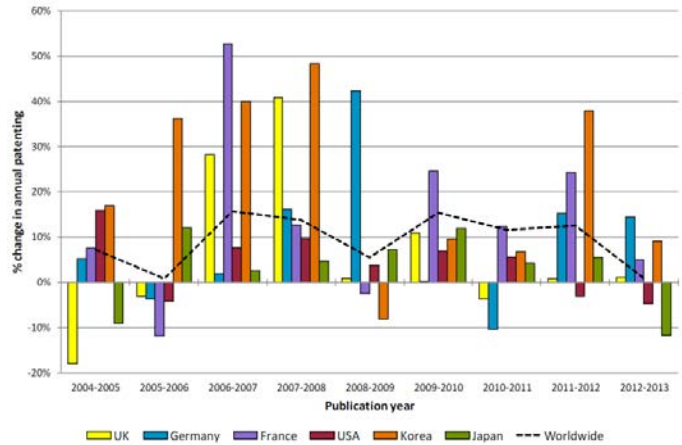
patent families
(inventions)



Faster growing

than the worldwide increase in
patenting across all technologies

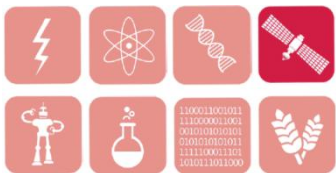
6.5% UK annual growth
in patenting activity
(Japan 3%, USA 4%)



Airbus UK top UK
applicant

Full patent landscape report available to download from

www.gov.uk/government/publications/eight-great-technologies-satellites



#8Great

www.ipso.gov.uk/informatics

informatics@ipso.gov.uk



Intellectual Property Office is an operating name of the Patent Office