



Workplace learning qualification success rates 2012/2013

Producing the dataset and Data Definitions

Date of issue 25 November 2013

Publication intent NOT PROTECTIVELY MARKED

Contents

Section 1 - Introduction	2
Purpose of document	2
Purpose of success rates	2
Workplace learning success rate methodology	2
Workplace learning business rules	2
Exclusions of workplace learning aims from the success rates dataset	3
Section 2 – Processing of ILR and LEOP Standard Files	5
Process flow diagram	5
Identifying workplace learning aims	6
Process further education college mergers	7
Process learner reference number changes	7
Merging of learning aims across years	8
Fields in the success rates dataset	8
Overall and timely success-rate calculations	9
Section 3 - Contents of the success-rates dataset for records created from the ILR	11
Source or derivation of fields in the success-rates dataset	11
Section 4 - Contents of the success-rates dataset for records created from the LEOP dataset	17
Source or derivation of fields in the success-rates dataset	17
Data items contained in the LEOP dataset	23
Section 5 - Derivation of the QCF_Size field in the success-rates dataset	24
Further information	25

Skills Funding Agency

Cheylesmore House, Quinton Road, Coventry, CV1 2WT
T 0845 377 5000 www.skillsfundingagency.bis.gov.uk

A partner organisation of the Department for Business, Innovation & Skills

Section 1 - Introduction

Purpose of document

1. This document provides technical information about how information provided in the Individualised Learner Records, and Large Employer Outcome Pilot records is processed in order to produce the success rates dataset which the workplace learning 2012/2013 qualification success rate and minimum standards reports are produced from. This document also provides information about where the information included with the success rate and minimum standards reports comes from.

Purpose of success rates

2. The workplace learning success rate is a measure of the quality of the workplace learning aims that a provider ran in a particular academic year. Success rates are used to identify provision that falls below the minimum standards quality standard. Provision which falls below the minimum standards quality standard is one of the factors that has been identified in 'New Challenges, New Chances' (at www.gov.uk/government/uploads/system/uploads/attachment_data/file/145449/11-1213-new-challenges-new-chances-implementing-further-education-reform.pdf), that will prompt us to take action under our Approach to Intervention process (at readingroom.lsc.gov.uk/SFA/Intervention_Statement.pdf).
3. Success rates are used in FE Choices and National Success Rate Tables to show learners and employers the relative quality of provision. The Office for Standards in Education, Children's Services and Skills (Ofsted) also use them as part of their inspection process.

Workplace learning success rate methodology

4. The Workplace learning success rate methodology has two measures - the 'overall' success rate measure and the 'timely' success rate measure.
5. The overall success rate measure is used by us to formally assess whether a provider meets minimum standards quality standard.
6. The overall success rate is based on a hybrid end year, which is the later of actual end year or the planned end year of the learning aim. The workplace learning aims in scope for the overall success rate for the 2012/2013 overall success rate are those that were either planned to end or actually did end in the academic year ending 31st July 2013.
7. The timely success rate is based on the planned end year of a learning aim. The learning aims in scope for the timely success rate measure are those with a planned end date up to the 31st July 2013. In the timely success rate measure a workplace learning aim is counted as achieved if the achievement date is on or before the planned end date, or up to 90 days after the planned end date.

Workplace learning business rules

8. Each year we produce the business rules that describe how the success rates will be calculated, and the workplace learning aims that will not be included in the success rate

calculations. The workplace learning business rules are published on the Data Service website (www.thedataservice.org.uk/Statistics/success_rates/success_rates_2012-13/).

9. A number of workplace learning aims are not included when calculating the success in order to make the results more credible and appropriate. The main reason for not including a particular learning aim is that it would not be fair to the provider (for example, if success rates would be affected by circumstances beyond the provider's control)

Exclusions of workplace learning aims from the success rates dataset

10. The report pack for the success-rate reports includes a file containing the data used in the overall and timely success-rate calculations. This data file only contains learning aims that are used to calculate the success rate.
11. The way that the workplace learning aims that are not included in the calculations (excluded aims) are identified is described below.

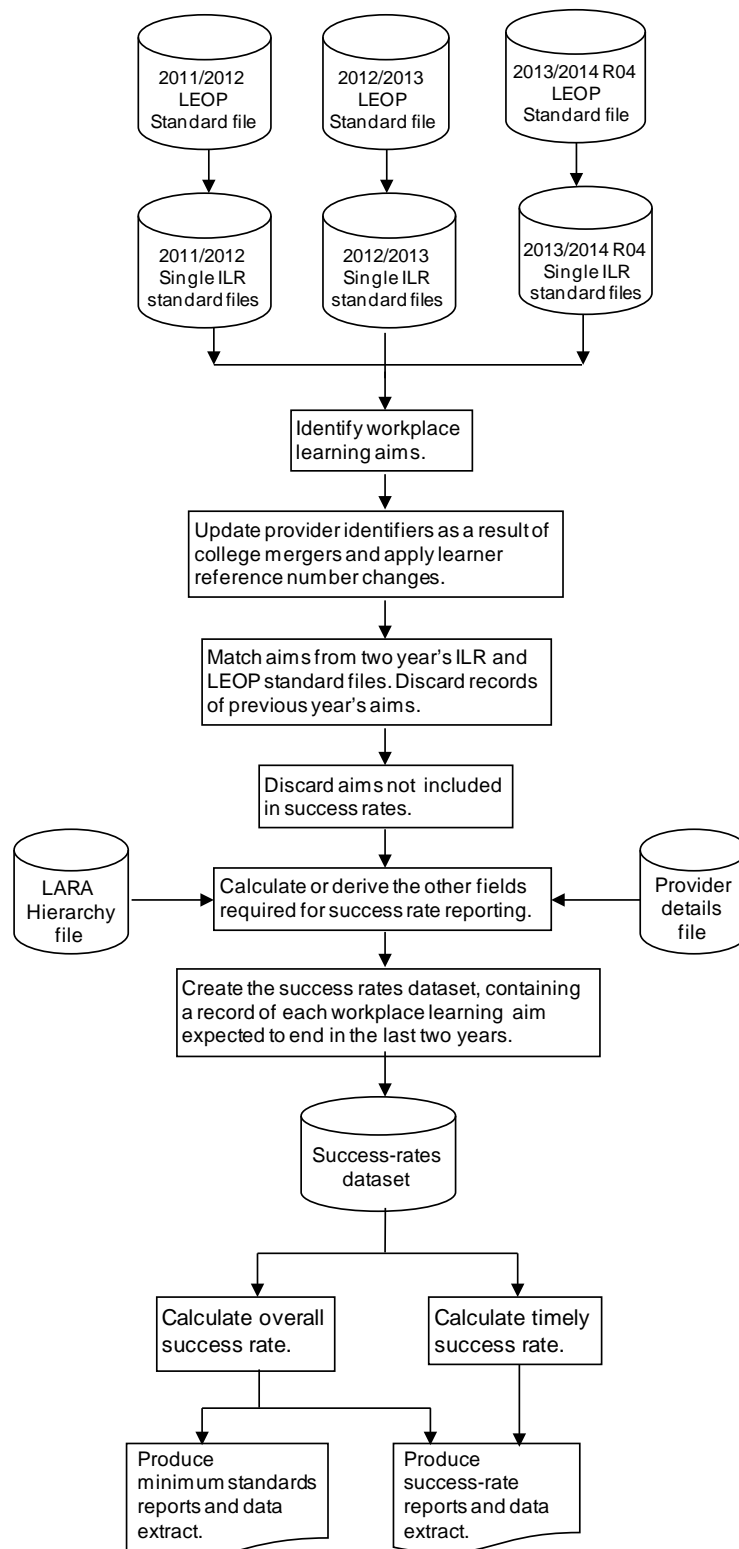
Type of excluded aim	Rules for Identifying the excluded aim
Learner who has transferred to a new provider as a consequence of intervention from us	Aims where the Withdrawal Reason (A50) is 7 or 41.
For the overall success rate, aims where the learner has transferred to a different aim with the same provider	Aims where Completion Status (A34) is 4 or 5 or the Withdrawal Reason (A50) is 40.
For the timely success rate, aims where the learner has transferred to a different aim with the same provider up to and including 90 days later than the planned end date	Aims where Completion Status (A34) is 4 or 5 or the Withdrawal Reason (A50) is 40 and the Learning Actual End Date (A31) occurs within 90 days of the end of the planned end date.
For the overall success rate, aims where the learner has temporarily withdrawn from the aim due to an agreed break in learning	Aims where Completion Status (A34) is 6.
For the timely success rate, aims where the learner has temporarily withdrawn from the aim due to an agreed break in learning up to and including 90 days later than the planned end date	Aims where Completion Status (A34) is 6 and the Learning Actual End Date (A31) occurs within 90 days of the end of the planned end date.
Aims that did not complete the qualifying period of 42 days (6 weeks)	Aims where the difference between the Learning Start Date (A27) and the Learning Actual End Date (A31) is less than 42 days (six weeks), and which have not been achieved (P_Prog_Status is not 1).
Employability Skills Programme (ESP) funded aims	Aims where National Learning Aim Monitoring Code (A46a, A46b, A46c) is 83.
Classroom learning aims reported via the employer responsive funding stream	Aims where the National Learning Aim Monitoring Code (A46a, A46b and A46c) is 125.
Innovation code aims	Aims where the Learning Aim Reference (A09) is ZINN0001, ZINN0002, ZINN0003, ZINN0004, ZINN0005 or ZINN0006.
Aims where there is a "fail" result after a learner transferred to an Apprenticeship under Government Strategy (as referenced in "Investing in Skills for Sustainable Growth" BIS, November 2010)	For the ILR files for 2012/2013 onwards only, aims where Withdrawal Reason (A50) is 41.
Aims where learners claiming Jobseeker's Allowance (JSA) or Employment and Support Allowance (ESA) in the Work Related Activity	For ILR files for 2011/2012 onwards only, aims where Planned End Date is later than 31st July 2012, Completion Status is not 1, Outcome is not

Type of excluded aim	Rules for Identifying the excluded aim
Group (WRAG) cannot continue their learning through to successful completion because they have started work	1, Employment Outcome is 1 or 2, and the latest ILR record for the learner has an Employment Status Monitoring Type of BSI and a Employment Status Monitoring Code of 1, 2 or 4.

Section 2 – Processing of ILR and LEOP Standard Files

Process flow diagram

12. This flow diagram below shows how Individualised Learner Record (ILR) and Large Employer Outcome Pilot (LEOP) information for multiple academic years is processed to produce the success-rates dataset, which is the source of the information used for the success-rate and minimum standards reports.



Identifying workplace learning aims

13. The method for identifying workplace learning aims from the 2011/2012 and 2012/2013 ILR is by selecting aims where the **Funding Model (A10)** is 45 (employer responsive). Access to Apprenticeships followed by learners who are not employed are also included in workplace learning success rates. Access to Apprenticeships programmes are identified where the **Data Set Identifier Code (A04)** is 35, the **Programme Type (A15)** is 2, 3, 10, 20 or 21, the **National**

Learning Aim Monitoring Code (A46a, A46b, A46c) is 127 and the Access to Apprenticeship employment status (**A_ATA_EMP**) is not 1.

14. The workplace learning aims from the LEOP dataset are identified as follows

- Aim Type is not 35.
- Programme Type (A15) is not 2, 3, 10, 20 or 21.
- Learning Aim Reference (A09) is not ZINN0001 to ZINN0006.

Process further education college mergers

15. In the year after two further education colleges merge to form a new college, the success rate methodology combines the learning aims for both colleges for the previous year under the new merged college and produces success rates for the new college. This allows the new college to compare their current year's success rate with a comparable success rate for the previous year.

16. Learning aims are combined by changing provider numbers (UPIN) of the old colleges to be that of the new colleges number. The original provider numbers are retained in the success rates dataset in the L01_orig field.

17. Note that this merger process only applies to further education colleges. It does not apply to the mergers of any other types of providers (for example, private training providers).

Process learner reference number changes

18. As described later, the learner reference number (L03) is used when matching learning aims across years. The learner reference number is assigned by the provider, and providers (or their software) will occasionally change them, either within a year or between years.

19. If the learner reference number is changed, the process of matching learning aims does not work correctly and two records are created in the success-rates dataset for the same learning aim – one using the old learner reference number and one the new learner reference number. As the learning aim from the earlier year's ILR file will not have any achievement data, it will reduce the provider's success rate unless this matching issue is addressed.

20. To address this issue, the Data Service introduced the learner reference number mapping spreadsheet (available on the Data Service website (www.thedataservice.org.uk/Statistics/success_rates/l03_change_process.htm)) which allows a provider to cross reference the old and new learner reference numbers.

21. The affected learner reference numbers are changed to those on the learner reference number mapping spreadsheet. The original learner reference number is kept in the success-rates dataset in the L03_orig field.

22. Providers who no longer have a contract with us for 2013/2014 because their previous contract was less than the minimum contract level do not have the ability to submit achievement information in return R04 of the 2013/2014 ILR. This can reduce their timely success rate. For those affected providers that have become subcontractors, if the prime

provider completes a learner reference number mapping spreadsheet identifying those learners who were previously studying at the provider, the achievement information present in return R04 of the prime provider is applied to the learning aims of the learners of the subcontractor.

Merging of learning aims across years

23. Many learning aims take more than one year to complete. This means that the same learning aims for a particular learner can appear in more than one ILR and LEOP file. Learning aims can be completed earlier than planned, and some learning aims are not marked as completed.

24. The ILR files and the LEOP files for an academic year are amalgamated into a single file before the yearly files are merged.

25. Various combinations of variables are used to ensure the correct learning aims matched. The matching process uses Provider Number (L01), Learner Reference Number (L03), Learning Aim Reference (A09) together with the following combinations, in the following sequence;

- Learning Start Date (A27), Learning Planned End Date (A28) and Achievement Date (A40)
- Learning Start Date (A27) and Learning Planned End Date (A28)
- Learning Start Date (A27) and Achievement Date (A40)
- Learning Start Date (A27)

26. Once the learning aim records have been matched those from previous years are discarded, leaving only the latest information of the learning aim record in the success-rates dataset.

Fields in the success rates dataset

27. A number of the fields on the success-rates dataset come directly from the ILR and LEOP files. The other fields are either derived or calculated. Sections 3 and 4 gives full details of the source, derivation or calculation of the fields on the success-rates dataset.

28. Two reference files are used in some of the derivations

- a) The 2012/2013 LARA Hierarchy file. This file holds the learning aim data sourced from the Learning Aims Reference Application (LARA), and holds the aim's information as at the close of the 2012/2013 ILR on 25th October 2013
- b) The 2012/2013 Provider Details file. This file holds provider details sourced from the Provider and Organisation Information Management System (PIMS), and holds the provider's information as at the 31st July 2013.

Overall and timely success-rate calculations

29. The main fields from the success-rate dataset that are used in the calculation of the overall success rates are as follows.

- Hybrid End Year (P_Hybridendyr).
This field the later of the actual learning end year (P_Actendyr) or the expected learning end year (P_Expendyr).
- P_Achieve_Overall
This field indicates whether a learning aim has been achieved.
- P_Count_Overall
This field indicates whether a learning aim has been completed.

30. For a given academic year the overall qualification success rate percentage is calculated as follows.

$$\frac{\text{Number of learning aims that have achieved at any time}}{\text{Number of learning aims that have completed}} \times 100$$

In terms of the variables on the success-rates dataset, for a given hybrid end year (P_Hybridendyr) the overall qualification success rate percentage is calculated as follows.

$$\frac{\text{The number of learning aims where P_Achieve_Overall is 1}}{\text{The number of learning aims where P_Count_Overall is 1}} \times 100$$

31. The main fields from the success-rate dataset that are used in the calculation of the timely success rate are;

- The Expected End Year (P_Expendyr).
This field is the first calendar year of the academic period in which the Learning Planned End Date (A28) falls.
- P_Achieve_Timely
This field indicates whether a learning aim has been achieved.
- P_Count_Timely
This field indicates whether a learning aim was expected to be completed in a particular academic year..

32. For a given academic year the timely qualification success rate percentage is calculated as follows.

$$\frac{\text{Number of learning aims that have achieved by their planned end date or within 90 days after their planned end date}}{\text{Number of learning aims expected to complete}} \times 100$$

In terms of the variables on the success-rates dataset, for a given expected end year (P_Expendyr) the timely qualification success rate percentage is calculated as follows.

$$100 \times \frac{\text{The number of learning aims where P_Achieve_Timely is 1}}{\text{The number of learning aims where P_Count_Timely is 1}}$$

Section 3 - Contents of the success-rates dataset for records created from the ILR

Source or derivation of fields in the success-rates dataset

Data Item	Field Description	Data Values	Source (ILR)	Derivation
A_Agest	The age of the learner as at the start date of the aim		ILR standard file	Set to the value of the ILR derived variable A_Agest .
A_Agestb	A banding of the learner as at the start date of aim.		ILR standard file	Set to the value of the ILR derived variable A_Agestb .
A_FullLevel2	Full level 2 aim		Derived	Set to 1 if A_L2wid is greater than or equal to 100 or if Programme Type (A15) is 3. Otherwise set to 0.
A_FullLevel3	Full level 3 aim		Derived	Set to 1 if A_L3wid is greater than or equal to 100 or 1 if Programme Type (A15) is 2, 10, 20 or 21. Otherwise set to 0.
A_L2cat	Full level 2 category		LARA hierarchy file	Set to Level2_Entitlement_Cat_Code .
A_L2pct	Full level 2 percentage		LARA hierarchy file	Set to Level2_Percentage .
A_L2wid	Level 2 width for full level 2 and GCSE aims		ILR standard file	Set to the value of the ILR derived variable A_L2wid .
A_L3cat	Full level 3 category		LARA hierarchy file	Set to Level3_Entitlement_Cat_Code .
A_L3pct	Full level 3 percentage		LARA hierarchy file	Set to Level3_Percentage .
A_L3wid	Level 2 width for full level 3 and AS A2 aims		ILR standard file	Set to the value of the ILR derived variable A_L3wid .
A_Leavep	Identifies period that an aim ended in		ILR standard file	Set to the value of the ILR derived variable A_Leave_ACM .
A_Notion	Notional NVQ level		LARA hierarchy file	Set to Notional_NVQ_Level_Code .
A_Oprov	Indicates whether the aim is other provision		ILR standard file	Set to the value of the ILR derived variable A_Oprov .
A_SFLP	Skills for Life participation flag		ILR standard file	Set to the value of the ILR derived variable A_SFLP .
A_SSA_T1	SSA tier 1 code		Derived	For workplace learning aims set to SSA_tier1_code from the LARA hierarchy file. For Access to Apprenticeship aims set to SSA_tier1_code from the framework lookup.
A_SSA_T2	SSA tier 2 code		Derived	For workplace learning aims set to SSA_tier2_code from the LARA hierarchy file. For Access to Apprenticeship aims set to SSA_tier2_code from the

Data Item	Field Description	Data Values	Source (ILR)	Derivation
				framework lookup.
A09	Learning aim reference		ILR standard file	Set to Learning Aim Reference (A09).
A22	Subcontractor / partnership UKPRN		ILR standard file	Set to Subcontracted or partnership UKPRN (A22).
A22_UKPRN_Name	The name of the subcontractor		ILR 2012/2013 provider-details file	The name of the subcontracting provider, from the ILR 2012/2013 provider-details file.
A23	Delivery location postcode		ILR standard file	Set to Delivery Location Postcode (A23).
A27	Learning start date (DDMMYYYY)		ILR standard file	Set to Learning Start Date (A27).
A28	Learning planned end date (DDMMYYYY)		ILR standard file	Set to Learning Planned End Date (A28).
A31	Learning actual end date (DDMMYYYY)		ILR standard file	Set to Learning Actual End Date (A31).
A34	Completion status		ILR standard file	Set to Completion Status (A34).
A35	Learning outcome		ILR standard file	Set to Outcome (A35).
A44	Employer identifier		ILR standard file	Set to Employer Identifier (A44).
A46A	National learning-aim monitoring – A		ILR standard file	For ILR files for 2008/2009 to 2010/2011 set to National Learning Monitoring Code A (A46A). For ILR files for 2011/2012 onwards, set to the first Learning Delivery Funding and Monitoring Code where the Learning Delivery Funding and Monitoring Type is 'LDM'.
A46B	National learning-aim monitoring – B		ILR standard file	For ILR files for 2008/2009 to 2010/2011 set to National Learning Monitoring Code B (A46B). For ILR files for 2011/2012, onwards set to the second Learning Delivery Funding and Monitoring Code where the Learning Delivery Funding and Monitoring Type is 'LDM'.
A46C	National learning-aim monitoring – C		ILR standard file	For ILR files for 2008/2009 to 2011/2012 set to National Learning Monitoring Code C (A46C). For ILR files for 2012/2013 onwards, set to the third Learning Delivery Funding and Monitoring Code where the Learning Delivery Funding and Monitoring Type is 'LDM'.
A50	Reason learning ended		ILR standard file	Set to Withdrawal Reason (A50).
A63	National Skills Academy		ILR standard file	For ILR files for 2009/2010 and 2010/2011 set to National Skills Academy (A63). For ILR files for 2011/2012 onwards set to Learning Delivery Funding and Monitoring Type and Code is 'NSA'.

Data Item	Field Description	Data Values	Source (ILR)	Derivation
Age_Band	Ages banded into 16-18, 19-24 and 25+ for reporting purposes	1 = 16-18 2 = 19-24 3 = 25+	Derived	Set to 1 if A_Agestb is 1 or 2. Set to 2 if A_Agestb is 3 or 4. Set to 3 or any other value of A_Agestb .
AimType	The type of aim, for reporting purposes		Derived	Set to 'Full Level 2' if A_FullLevel2 is 1. Set to 'Full Level 3' if A_FullLevel3 is 1. Set to 'Below Level 2 (excl SFL)' if Below_Level 2 is 1. Set to 'Skills for Life' if A_SFLP flag is 1. Otherwise set to 'Other'.
A_Total_Payment	This is the total payments made to the provider over the lifetime of the learning aim.		Derived	The sum of the ILR derived variable A_Total_Payment_Y2D for the years that the learning aim is present on the ILR.
Below_Level2	Used to identify an aim at entry level or level 1 that is not Skills for Life		Derived	Set to 1 if Notion_NVQ_Level_Code from the LARA hierarchy file is E or 1 and A_SFLP is 0.
Datasource	The source of the record on the success rates dataset, which is either the ILR or the LEOP dataset	ILR	Derived	Set to 'ILR'
IA_RETURN	The ILR return from which the success rates data has been sourced	14	Derived	Set to 14.
L_Age	Age of learner as at 31st August		ILR standard file	Set to the value of the ILR derived variable L_Age .
L01	Provider UPIN		ILR standard file	Set to Provider Number (L01) .
L01_Orig	The UPIN of the learning aim before the college merger process was applied to a provider's data		Derived	See paragraph 15 to 17 for the setting of this field by the further education college merger process.
L03	Learner reference number		ILR standard file	Set to Learner Reference Number (L03) .
L03_Orig	The learner reference number of the learning aim before the college merger process was applied to a provider's data		Derived	See paragraph 18 to 22 for the setting of this field by the learner reference number change process.
L11	Date of birth		ILR standard file	Set to Date of Birth (L11) .
L12	Ethnicity		ILR standard file	Set to Ethnicity (L12) .
L13	Sex		ILR standard file	Set to Sex (L13) .
L14	Whether the learner considers that they have a learning difficulty, disability or health problem		ILR standard file	Set to LLDD and health problem indicator (L14) .
L15	Disability		ILR standard file	Set to LLDD and Health Problem Code where the LLDD and Health

Data Item	Field Description	Data Values	Source (ILR)	Derivation
				Problem Type is 'DS'.
L16	Learning difficulty		ILR standard file	Set to LLDD and Health Problem Code where the LLDD and Health Problem Type is 'LD'.
L17	Home postcode		ILR standard file	Set to Postcode where Locator Type is 2 and Contact Type is 1.
L22	Current postcode		ILR standard file	Set to Postcode where Locator Type is 2 and Contact Type is 2.
Learning_Aim_Type	Code used by the Learner Aims Reference Application to assign learning aims to certain listed types of learning aim.		LARA hierarchy file	Set to Learning_Aim_Type_Code for the learning aim, from the LARA hierarchy file.
P_Ach_Overall	Used by the overall success rate measure. Indicates whether the learner has achieved the learning aim	0 or 1	Derived	Set to 1 if P_Prog_Status is 1 (achieved) and Learning Actual End Date (A31) occurs prior to the end of the overall period (p_period_end_overall). Otherwise set to 0.
P_Ach_Timely	Used by the timely success rate measure. Indicates whether the learner has achieved the learning aim	0 or 1	Derived	Set to 1 if P_Prog_Status is 1 (achieved) and Learning Actual End Date (A31) occurs prior to the end of the timely period (p_period_end_timely) and Learning Actual End Date (A31) is on or before the Learning Planned End Date (A28) or not more than 90 days after the Learning Planned End Date . Otherwise set to 0.
P_Actendyr	The actual end year of the learning aim (20_ _)		Derived	Set to the first calendar year of the academic period the Learning Actual End Date (A31) falls in. For example, if the Learning Actual End Date falls within the 2010/2011 academic year, P_Actendyr has the value of 2010.
P_Count_Overall	Indicates whether the record should be counted towards the overall success rate	0 or 1	Derived	Set to 1 if P_Leavers_Overall is 1 and P_Trans_Overall is 0 and P_Plan_Break_Overall is 0 and P_Hybridendyr is in the past 2 years. Otherwise set to 0.
P_Count_Timely	Indicates whether the record should be counted towards the timely success rate	0 or 1	Derived	Set to 1 if P_Trans_Timely is 0 and P_Plan_Break_Timely is 0 and P_Expendyr is in the past 2 years. Otherwise set to 0.
P_Expendyr	The expected end year of the learning aim (20_ _)		Derived	Set to the value of the first calendar year of the academic period the Learning Planned End Date (A28) falls in. For example, if the Learning Planned End Date falls within the 2012/2013 academic year, P_Expendyr has the value of 2012.

Data Item	Field Description	Data Values	Source (ILR)	Derivation
P_HYybridendyr	The hybrid end year of the learning aim (20_ _)		Derived	Set to the higher of the actual learning end year (P_Actendyr) or the expected learning end year (P_Expndyr).
P_IN_1112	Learning aim is in the 2011/2012 dataset	0 or 1	Derived	Set to 1 if the aim is taken from the 2011/2012 ILR. Otherwise set to 0.
P_IN_1213	Learning aim is in the 2012/2013 dataset	0 or 1	Derived	Set to 1 if the aim is taken from the 2012/2013 ILR. Otherwise set to 0.
P_Period_End_Overall	Last day of the overall reporting period (DDMMYYYY)		Derived	Set to the last day of the overall reporting period. For example, if the reporting period for the overall success rate for 2012/2013 is return 14, P_Period_End_Overall is set to 31/07/2013.
P_Period_End_Timely	Last day of the timely reporting period (DDMMYYYY)		Derived	Set to the last day of the timely reporting period. For example, if the reporting period for the timely success rate for 2012/2013 is return 14, P_Period_End_Timely is set to 31/07/2013.
P_Plan_Break_Overall	Used by the overall success rate measure. Indicates whether the learner is on a planned break	0 or 1	Derived	Set to 1 if P_Prog_Status is 11 or 12 and the Learning Actual End Date (A31) occurs prior to the end of the overall period (P_Period_End_Overall). Otherwise set to 0.
P_Plan_Break_Timely	Used by the timely success rate measure. Indicates whether the learner is on a planned break	0 or 1	Derived	Set to 1 if P_Prog_Status is 11 or 12 and Learning Actual End Date (A31) occurs prior to the end of the timely period (p_period_end_timely) and Learning Actual End Date (A31) is on or before the Learning Planned End Date (A28) or not more than 90 days after the Learning Planned End Date . Otherwise set to 0.
P_Prog_Status	To determine the status of the learning aims for calculating success rates		Derived	If the learning aim is an Access to Apprenticeship framework set to the ILR derived variable P_Prog_Status . If the learning aim is not an Access to Apprenticeship framework set as described below. Set to 0 (continuing) if the Learning Actual End Date (A31) is not present. Set to 1 (achieved) if the Learning Outcome (A35) is 1. Set to 11 (planned break) if the Completion Status (A34) is 6. Set to 10 (transfer to a new provider forced by SFA or EFA intervention) if the Withdrawal Reason (A50) is 7. Set to 8 (transfer to a new aim at the same provider) if the Withdrawal Reason (A50) is 41. Set to 8 (transfer to a new aim at the same provider) if the Completion Status (A34) is 3 and the Withdrawal Reason (A50) is 40. Set to 8 (transfer to a new aim at the same provider) if the Completion

Data Item	Field Description	Data Values	Source (ILR)	Derivation
				Status (A34) is 4. Set to 9 (not achieved) if the Withdrawal Reason (A50) is 2. If none of the conditions above apply set to 6 (not achieved).
P_Startyr	The start year of the learning aim (20_ _)		Derived	Set to the value of the first calendar year of the academic period in which the Learning Start Date (A27) falls. For example, if the Learning Start Date falls within the academic year 2011/2012 P_Startyr is set to 2011.
P_Trans_Overall	Used by the overall success rate measure. Indicates whether a learner has transferred to another learning aim	0 or 1	Derived	Set to 1 if P_Prog_Status is 7, 8 or 10 and the Learning Actual End Date (A31) occurs prior to the end of the overall period (P_Period_End_Overall). Otherwise set to 0.
P_Trans_Timely	Used by the timely success rate measure. Indicates whether a learner has transferred to another learning aim	0 or 1	Derived	Set to 1 if P_Prog_Status is 7, 8 or 10 and Learning Actual End Date (A31) occurs prior to the end of the timely period (p_period_end_timely) and Learning Actual End Date (A31) is on or before the Learning Planned End Date (A28) or not more than 90 days after the Learning Planned End Date . Otherwise set to 0.
Prv_Name	Provider name		ILR 2012/2013 provider-details file	Obtained from the ILR 2012/2013 provider-details file.
Prv_Type	Provider type		ILR 2012/2013 provider-details file	Obtained from the ILR 2012/2013 provider-details file.
Pst_LEA	The local authority derived from the delivery location postcode (A23)		ILR 2012/2013 provider-details file	Obtained from the ILR 2012/2013 provider-details file.
QCF_SIZE	A grouping of aims, based on the QCF sizes of 'unit', 'award', 'certificate' and 'diploma', used to categorise learning aims on the minimum standards reports		Derived	Refer to paragraph 34 for the derivation of QCF_Size.
ULN	Unique learner number		ILR standard file	Set to Unique Learner Number (L45).
Year	Current academic year for the success rates dataset		Derived	Set to '2012/13'.

Section 4 - Contents of the success-rates dataset for records created from the LEOP dataset

Source or derivation of fields in the success-rates dataset

Data Item	Field Description	Data Values	Source (LEOP)	Derivation
A_Agest	Age of the learner as at the start date of the aim		LEOP standard file	Set to the value of derived variable A_Agest .
A_Agestb	A banding of the learner as at the start date of aim.		Derived	Set to 1 if A_Agest is in the range 0 - 15 (inclusive). Set to 2 if A_Agest is in the range 16 - 18 (inclusive). Set to 3 if A_Agest is in the range 19 - 20 (inclusive). Set to 4 if A_Agest is in the range 21 - 24 (inclusive). Set to 5 if A_Agest is in the range 25 - 59 (inclusive). Set to 6 if A_Agest is in the range 60 - 120 (inclusive). Set to 9 for any other value of A_Agest .
A_FullLevel2	Full level 2 aim		Derived	Set to 1 if A_L2wid is greater than or equal to 100 or if Programme Type is 3. Otherwise set to 0.
A_FullLevel3	Full level 3 aim		Derived	Set to 1 if A_L3wid is greater than or equal to 100 or 1 if Programme Type is 2, 10, 20 or 21. Otherwise set to 0.
A_L2cat	Full level 2 category		LARA hierarchy file	Set to Level2_Entitlement_Cat_Code .
A_L2pct	Full level 2 percentage		LARA hierarchy file	Set to Level2_Percentage .
A_L2wid	Level 2 width for full level 2 and GCSE aims		LEOP standard file	Set to the value of derived variable A_L2wid .
A_L3cat	Full level 3 category		LARA hierarchy file	Set to Level3_Entitlement_Cat_Code .
A_L3pct	Full level 3 percentage		LARA hierarchy file	Set to Level3_Percentage .
A_L3wid	Level 2 width for full level 3 and AS A2 aims		LEOP standard file	Set to the value of derived variable A_L3wid .
A_Leavep	Identifies the period that an aim ended in		LEOP standard file	Set to the value of derived variable A_Leave_ACM .
A_NOTION	Notional NVQ level		LARA hierarchy file	Set to Notional_NVQ_Level_Code .
A_Oprov	Indicates whether the aim is other provision		LEOP standard file	Set to the value of derived variable A_Oprov .
A_SFLP	Skills for Life participation flag	0 or 1	LEOP standard file	Set to the value of derived variable A_SFLP .
A_SSA_T1	SSA tier 1 code		Derived	For workplace learning aims set to SSA_tier1_code from the LARA Hierarchy File. For Access to Apprenticeship aims set to SSA_tier1_code from the framework lookup.

Data Item	Field Description	Data Values	Source (LEOP)	Derivation
A_SSA_T2	SSA tier 2 code		Derived	For workplace learning aims set to SSA_tier2_code from the LARA Hierarchy File. For Access to Apprenticeship aims set to SSA_tier2_code from the framework lookup.
A09	Learning aim reference		LEOP standard file	Set to Learning Aim Reference .
A22	Subcontractor / partnership UKPRN	Not populated	-	Not present in LEOP dataset.
A22_UKPRN_Name	The name of the subcontractor	Not populated	-	Not present in LEOP dataset.
A23	Delivery location postcode		LEOP standard file	Set to Delivery Location Postcode .
A27	Learning start date (DDMMYYYY)		LEOP standard file	Set to Learning Start Date .
A28	Learning planned end date (DDMMYYYY)		LEOP standard file	Set to Learning Planned End Date .
A31	Learning actual end date (DDMMYYYY)		LEOP standard file	Set to Learning Actual End Date .
A34	Completion status		LEOP standard file	Set to Completion Status .
A35	Learning outcome		LEOP standard file	Set to Outcome Indicator .
A44	Employer identifier	Not populated	-	Not present in LEOP dataset.
A46A	National learning-aim monitoring – A	Not populated	-	Not present in LEOP dataset.
A46B	National learning-aim monitoring – B	Not populated	-	Not present in LEOP dataset.
A46C	National learning-aim monitoring – C	Not populated	-	Not present in LEOP dataset.
A50	Reason learning ended	Not populated	-	Not present in LEOP dataset.
A63	National Skills Academy	Not populated	-	Not present in LEOP dataset.
Age_Band	Ages banded into 16-18, 19-24 and 25+ for reporting purposes	1 = 16-18 2 = 19-24 3 = 25+	Derived	Set to 1 if A_Agestb is 1 or 2. Set to 2 if A_Agestb is 3 or 4. Set to 3 or any other value of A_Agestb .
AimType	The type of aim, for reporting purposes		Derived	Set to 'Full Level 2' if A_FullLevel2 is 1. Set to 'Full Level 3' if A_FullLevel3 is 1. Set to 'Below Level 2 (excl SFL)' if Below_Level 2 is 1. Set to 'Skills for Life' if A_SFLP flag is 1. Otherwise set to 'Other'.
A_Total_Payment	This is the total payments made to the provider over the lifetime of the learning aim.	Not populated	-	Payment information is not present on LEOP standard file.
Below_Level2	Used to identify an aim at entry level or		Derived	Set to 1 if Notion_NVQ_Level_Code from the LARA hierarchy file is

Data Item	Field Description	Data Values	Source (LEOP)	Derivation
	level 1 that is not Skills for Life			E or 1 and A_SFLP is 0.
Datasource	The source of the record on the success rates dataset, which is either the ILR or the LEOP dataset	'LEOP'	Derived	Set to 'LEOP'
IA_Return	The return that the success rates dataset has been produced for	12	Derived	Set to 12.
L_Age	Age of learner as at 31st August		LEOP standard file	Set to the value of the ILR derived variable L_Age .
L01	Provider UPIN		ILR 2012/2013 provider-details file	Looked up from PIMS using the UKPRN .
L01_Orig	The UPIN of the learning aim before the college merger process was applied to a provider's data		Derived	Set to the L01 value.
L03	Learner reference number		LEOP standard file	Set to Learner Reference .
L03_Orig	The learner reference number of the learning aim before the college merger process was applied to a provider's data		Derived	Set to the L03 value.
L11	Date of birth		LEOP standard file	Set to Date of Birth .
L12	Ethnicity		LEOP standard file	Set to Learner Ethnicity .
L13	Sex		LEOP standard file	Set to Gender .
L14	Whether the learner considers that they have a learning difficulty, disability or health problem		LEOP standard file	Set to LLDD and Health Problem Indicator .
L15	Disability	Not populated	-	Not present in LEOP dataset.
L16	Learning difficulty	Not populated	-	Not present in LEOP dataset.
L17	Home postcode		LEOP standard file	Set to Learner Home Postcode .
L22	Current postcode	Not populated	-	Not present in LEOP dataset.
Learning_Aim_Type	Code used by the Learner Aims Reference Application to assign learning aims to certain listed types of learning aim.		LARA hierarchy file	Set to Learning Aim Type Code for the learning aim, from the LARA hierarchy file.
P_Ach_Overall	Used by the overall success rate measure. Indicates whether the learner has achieved the learning aim	0 or 1	Derived	Set to 1 if P_Prog_Status is 1 (achieved) and Learning Actual End Date occurs prior to the end of the overall period (p_period_end_overall). Otherwise set to 0.

Data Item	Field Description	Data Values	Source (LEOP)	Derivation
P_Ach_Timely	Used by the timely success rate measure. Indicates whether the learner has achieved the learning aim	0 or 1	Derived	Set to 1 if P_Prog_Status is 1 (achieved) and Learning Actual End Date occurs prior to the end of the timely period (p_period_end_timely) and Learning Actual End Date is on or before the Learning Planned End Date (A28) or not more than 90 days after the Learning Planned End Date . Otherwise set to 0.
P_Actendyr	The actual end year of the learning aim (20_ _)		Derived	Set to the first calendar year of the academic period the Learning Actual End Date falls in. For example, if the Learning Actual End Date falls within the 2010/2011 academic year, P_Actendyr has the value of 2010.
P_Count_Overall	Indicates whether the record should be counted towards the overall success rate	0 or 1	Derived	Set to 1 if a date entered in the Learning Actual End Date (A31) and P_Trans_Overall is 0 and P_Plan_Break_Overall is 0 and P_Hybridendyr is in the past 2 years. Otherwise set to 0.
P_Count_Timely	Indicates whether the record should be counted towards the timely success rate	0 or 1	Derived	Set to 1 if P_Trans_Timely is 0 and P_Plan_Break_Timely is 0 and P_Expendyr is in the past 2 years. Otherwise set to 0.
P_Expendyr	The expected end year of the learning aim (20_ _)		Derived	Set to the value of the first calendar year of the academic period the Learning Planned End Date falls in. For example, if the Learning Planned End Date falls within the 2012/2013 academic year, P_Expendyr has the value of 2012.
P_Hybridendyr	The hybrid end year of the learning aim (20_ _)		Derived	Set to the higher of the actual learning end year (P_Actendyr) or the expected learning end year (P_Expendyr).
P_IN_1112	Learning aim is in the 2011/2012 dataset	0 or 1	Derived	Set to 1 if the aim is taken from the 2011/2012 LEOP dataset. Otherwise set to 0.
P_IN_1213	Learning aim is in the 2012/2013 dataset	0 or 1	Derived	Set to 1 if the aim is taken from the 2012/2013 LEOP dataset. Otherwise set to 0.
P_Period_End_Overall	Last day of the overall reporting period (DDMMYYYY)		Derived	Set to the last day of the overall reporting period. For example, if the reporting period for the overall success rate for 2012/2013 is return 14, P_Period_End_Overall is set to 31/07/2013.
P_Period_End_Timely	Last day of the timely reporting period (DDMMYYYY)		Derived	Set to the last day of the timely reporting period. For example, if the reporting period for the timely success rate for 2012/2013 is return 14, P_Period_End_Timely is set to 31/07/2013.

Data Item	Field Description	Data Values	Source (LEOP)	Derivation
P_Plan_Break_Overall	Used by the overall success rate measure. Indicates whether the learner is on a planned break	0 or 1	Derived	Set to 1 if P_Prog_Status is 11 and the Learning Actual End Date occurs prior to the end of the overall period (P_Period_End_Overall). Otherwise set to 0.
P_Plan_Break_Timely	Used by the timely success rate measure. Indicates whether the learner is on a planned break	0 or 1	Derived	Set to 1 if P_Prog_Status is 11 and Learning Actual End Date occurs prior to the end of the timely period (p_period_end_timely) and Learning Actual End Date is on or before the Learning Planned End Date or not more than 90 days after the Learning Planned End Date . Otherwise set to 0.
P_Prog_Status	To determine the status of the learning aims for calculating success rates		Derived	Set to 0 (continuing) if the Learning Actual End Date is not present. Set to 1 (achieved) if the Learning Outcome is 1. Set to 11 (planned break) if the Completion Status is 6. If none of the conditions above apply set to 6 (not achieved). Note. As the LEOP dataset does not include a Reason Learning Ended P_Prog_Status values of 8 (transfer to a new aim at the same provider), 9 (Not Achieved), 9 (Not Achieved), 9 (Not Achieved) and 10 (transfer to a new provider forced by SFA or EFA intervention) cannot be determined.
P_Startyr	The start year of the learning aim (20_ _)		Derived	Set to the value of the first calendar year of the academic period in which the Learning Start Date falls. For example, if the Learning Start Date falls within the academic year 2011/2012 P_Startyr is set to 2011.
P_Trans_Overall	Used by the overall success rate measure. Indicates whether a learner has transferred to another learning aim	0 or 1	Derived	Set to 1 if P_Prog_Status is 7 or 8 and the Learning Actual End Date occurs prior to the end of the overall period (P_Period_End_Overall). Otherwise set to 0.
P_Trans_Timely	Used by the timely success rate measure. Indicates whether a learner has transferred to another learning aim	0 or 1	Derived	Set to 1 if P_Prog_Status is 7 or 8 and Learning Actual End Date occurs prior to the end of the timely period (p_period_end_timely) and Learning Actual End Date is on or before the Learning Planned End Date or not more than 90 days after the Learning Planned End Date . Otherwise set to 0.
Prv_Name	Provider name		ILR 2012/2013 provider-details file	Obtained from the ILR 2012/2013 provider-details file.
Prv_Type	Provider type		ILR 2012/2013 provider-details file	Obtained from the ILR 2012/2013 provider-details file.

Data Item	Field Description	Data Values	Source (LEOP)	Derivation
Pst_LEA	The local authority derived from the delivery location postcode		ILR 2012/2013 provider-details file	Obtained from the ILR 2012/2013 provider-details file.
QCF_Size	A grouping of aims, based on the QCF sizes of 'unit', 'award', 'certificate' and 'diploma', used to categorise learning aims on the minimum standards reports		Derived	Refer to paragraph 34 for the derivation of QCF_Size.
ULN	Unique learner number		LEOP standard file	Set to ULN .
Year	Current academic year for the success rates dataset	2012/13	Default	Set to '2012/13'.

Data items contained in the LEOP dataset

33. This section lists the data items which are supplied by employers in the Large Employer Outcome Pilot dataset, or which are obtained from the Learning Records Service. It also lists selected derived variables calculated for the dataset which are used in the derivation of some of the fields on the success rates dataset. These derived variables are calculated using the same method as for the ILR.

Field	Source	Notes
UKPRN	Employers data file	
ULN	Employer's data file	Unique Learner Number
Family Name	Employer's data file	
First Name	Employer's data file	
Date of Birth	Learning Records Service	Looked up from the Learning Records Service using ULN, First Name and Family Name
Gender	Learning Records Service	Looked up from the Learning Records Service using ULN, First Name and Family Name
Learner Home Postcode	Learning Records Service	Looked up from the Learning Records Service using ULN, First Name and Family Name
Learner Ethnicity	Employer's data file	ILR 2012/2013 codes are used (i.e. codes based on the 2012 census)
Learning Aim Reference	Employer's data file	A valid learning aim reference in LARA
Aim Type	Employer's data file	ILR 2012/2013 codes used 1 - Programme aim 2 - Main learning aim within an apprenticeship programme 3 - Component learning aim within a programme 4 - Learning aim that is not part of a programme
Programme Type	Employer's data file	ILR 2011/2012 codes are used
Framework Code	Employer's data file	A valid framework code in LARA
Learning Start Date	Employer's data file	
Learning Planned End Date	Employer's data file	
Learning Actual End Date	Employer's data file	
Completion Status	Employer's data file	ILR 2012/2013 codes are used
Outcome Indicator	Employer's data file	ILR 2012/2013 codes are used
Proportion of Funding Remaining	Employer's data file	An integer value between 1 and 100 to indicate the percentage of funding for learners who are not entitled to full funding for the aim or programme.
LDD and Health Problem Indicator	Employer's data file	ILR 2012/2013 codes are used.
Delivery Location Postcode	Employer's data file	The rules specified for the 2012/2013 ILR are applied
A_Agest	Derived variable	
A_Leave_ACM	Derived variable	
A_SSA_T1	Derived variable	
A_SSA_T2	Derived variable	

Section 5 - Derivation of the QCF_Size field in the success-rates dataset

34. QCF_Size categorises aims based on the QCF sizes of Unit, Award, Certificate and Diploma. It is determined from the **Learning_Aim_Type_Code**, **Map_Code** and **Credit_Based_Type_Code** fields held on the Learning Aim table in LARA, and the **Regulated_Credit_Value** field held on the All Annual Values table in LARA.

a) For aims with a **Credit_Based_Type_Code** of 1, 2 or 3 and where **Regulated_Credit_Value** is non zero, QCF_Size is determined as follows:

Learning_Aim_Type_Code is 1448 (QCF Unit)	Set to 'QCF unit'
Regulated_Credit_Value of 1 to 12 and Learning_Aim_Type_Code is not 1448 (QCF Unit)	Set to 'Award'
Regulated_Credit_Value of 13 to 36 and Learning_Aim_Type_Code is not 1448 (QCF Unit)	Set to 'Certificate'
Regulated_Credit_Value of 37 or more and Learning_Aim_Type_Code is not 1448 (QCF Unit)	Set to 'Diploma'

b) For aims where:

- the **Credit_Based_Type_Code** is 1, 2 or 3 and **Regulated_Credit_Value** is zero or blank
- or the **Credit_Based_Type_Code** is X
- or the **Credit_Based_Type_Code** has no value

QCF_Size is determined as follows:

Learning_Aim_Type_Code is 0002, 1413, 1414, 1415, 1417, 1418, 1430, 1431, 1434, 1435 or 1453	Set to 'A Level'
Learning_Aim_Type_Code is 0001, 1416, 1432 or 1433	Set to 'AS Level'
Learning_Aim_Type_Code is 0003, 1081, 1422 or 2999 and Map_Code is B1220137 (English language) or B0220076 (mathematics)	Set to 'GCSE Maths and English'
Learning_Aim_Type_Code is 0003, 1081, 1422 or 2999 and Map_Code is not B1220137 (English language) or B0220076 (mathematics)	Set to 'GCSE Other'
Skills for Life Type Code field on the All Annual Values table in LARA is 1, 2, 19, 20, 27, 29 or 30 and Learning_Aim_Type_Code is not 0001, 0002, 0003, 1081, 1401, 1413, 1414, 1415, 1416, 1417, 1418, 1422, 1430, 1431, 1432, 1433, 1434, 1435, 1441, 1442, 1443, 1444, 1453 or 2999	Set to 'Skills for Life Qualification'
Skills for Life Type Code field on the All Annual Values table in LARA is 21, 22, 23, 28, 31 or 32 and Learning_Aim_Type_Code is not 0001, 0002, 0003, 1081, 1401, 1413, 1414, 1415, 1416, 1417, 1418, 1422, 1430, 1431, 1432, 1433, 1434, 1435, 1441, 1442, 1443, 1444, 1453 or 2999	Set to 'Skills for Life Unit'
Learning_Aim_Type_Code is 1441, 1442, 1443 or 1444	Set to 'Diploma (14-19)'
Learning_Aim_Type_Code is 1401	Set to 'International Baccalaureate'

For any learning aim not classified using the rules above, set to 'Other'.

Further information

35. The Data Service is responsible for producing the success-rate dataset in line with the methodology approved by us and the Education Funding Agency.
36. If you need more information, you can phone the Data Service on 0870 267 0001 or email servicedesk@thedata-service.org.uk. Please provide a detailed explanation of your query.

Author	The Data Service
Date created	26 November 2013
Document ref.	WPL QSR Data Set Production and Data Definitions
Version	1.1

