

Royal Navy and Royal Marines Monthly Personnel Situation Report for December 2014



Ministry of Defence

(Published 15 January 2015)

Statistical Release

Issued by:
Defence Statistics

The statistician responsible for this report is the Defence Statistics (Navy) Head of Branch.

Email:
Defstrat-stat-navy-hd@mod.uk

If you would like to be informed by email of updates to this publication please subscribe via email:
Defstrat-stat-Navy@mod.uk

We welcome feedback, comments and queries on this report. Please contact us on the above email

The Background Quality Report for this publication can be found at:
[Background Quality Report](#)

Links to other publications which may be of interest

[UK Armed Forces Redundancy Programme Statistics](#) This publication contains information on the number of UK Armed Forces personnel either applying or being selected for redundancy in the various tranches. Please note that not all of those who applied were selected and not all of those that were selected had applied for redundancy.

[Royal Navy Quarterly Pocket Brief](#) This quarterly publication contains information on strengths, requirements, intakes and outflows from the Royal Navy service

This publication is a monthly report providing information on the number of Royal Navy and Royal Marine personnel joining and leaving the Regular service. It also shows the strengths of the Regular and Full Time Reserves Service (FTRS) Royal Navy and Royal Marines by rank and Length of Service. This publication is complemented by the [Royal Navy Quarterly Pocket Brief](#) which also shows breakdown of ethnicity in the RN/RM, Army and RAF.

Information about some of the tables used in this report The Royal Marine Aircrew-men are included with XAV; Royal Marine Medical Assistants are included with Medical. Where an RM/RN total split is given they are included with the RM. Royal Marine Officers include Royal Marine pilots. Ratings and Officers whose specialisation has not yet been assigned are covered by 'No Spec' for Officers and 'No Trade' for the Ratings. FTRS are only included in Table 1, unless otherwise stated. Transfer trainees have been removed from the Trained Strength Tables.

Voluntary Outflow (VO) Voluntary Outflow exit rates are calculated using the 12 months total VO divided by the average strength, which is calculated using a 12 month centred rolling average. This centres the data and gets a midpoint month. 13 months of strengths are used, starting mid-way through one month and ending mid-way through the same month a year later. This way the moving average VO rate falls on a specific month rather than being in between months.

Key Points for December 2014

Strengths

- The trained regular strength of the RN/RM including FTRS Regulars was 30,200 giving a deficit of 0.3% against the liability as shown in Table 1a.
- The trained regular strength excluding FTRS regulars was 29,960, a decrease of 50 from the previous month, also shown in Table 1a.

Outflows

- The total outflow from the trained regular strength excluding FTRS, was 2,980 in the 12 months to 1 December 2014, made up of 2,580 Ratings and 400 Officers as shown in Tables 9a and 9b.

[Summary of NATO Ranks](#)

[Glossary of Terms and Definitions used within this publication](#)

[Revisions](#)

[Data Sources](#)

[Data Issues - Strengths and Weaknesses](#)

[Rounding Policy](#)

[Liability](#)

[Feedback](#)

Current and Historic Trained Strengths

- 1a. Trained strengths and liability
- 1b. Summary of RN/RM strengths by service and arm
- 1c. Graph of historic trained regular trained strengths and liability by Quarter
- 1d. Graph of historic trained regular trained strengths and liability by Month

Trained strengths by Branch, Specialisation and Arm

- 2a. Trained regular Officer strengths and liability by Branch, Specialisation and Arm
- 2b. Trained regular Ratings strengths and liability by Branch, Specialisation and Arm
- 2c. FTRS Officers (regular and non-regular) strengths and liability by Branch, Specialisation and Arm
- 2d. FTRS Ratings (regular and non-regular) strengths and liability by Branch, Specialisation and Arm

Trained regular strengths by branch and paid rank

- 3a. Trained regular Officer strengths and liability
- 3b. Trained regular Ratings strengths and liability
- 3c. Graphs of trained regular Officer surplus/deficit by paid rank
- 3d. Graphs of trained regular Ratings surplus/deficit by paid rank
- 3e. FTRS Officer strengths by branch and paid rank
- 3f. FTRS ratings strengths by branch and paid rank

Trained regular strengths by branch specialisation, arm and paid rank

- 4a. (GS) Trained regular Officer General Service strengths by Branch, Specialisation, Arm and paid rank
- 4a. (SM) Trained regular Officer Submariner strengths by Branch, Specialisation, Arm and paid rank
- 4a. (FAA) Trained regular Officer Fleet Air Arm Branch, Specialisation, Arm and paid rank
- 4b. (GS) Trained regular Ratings General Service strengths by Branch, Specialisation, Arm and paid rank
- 4b. (SM) Trained regular Ratings Submariner strengths by Branch, Specialisation, Arm and paid rank
- 4b. (FAA) Trained regular Ratings Fleet Air Arm strengths by Branch, Specialisation, Arm and paid rank

Untrained regular strengths by branch and Paid Rank

- 5a. Untrained regular Officer strengths by Branch and paid rank
- 5b. Untrained regular Ratings strengths by Branch and paid rank

Trained regular strengths by Top Level Budget (TLB) and paid rank

- 6a. Trained regular strength by TLB and paid rank

Trained regular length of service (LoS)

- 7a. Trained regular length of service by rank
- 7b. Graph of trained regular Officer length of service by paid rank split by RN and RM
- 7c. Graph of regular Ratings and length of service by paid rank split by RN and RM

Trained regular Officer and Rating due outflow over the next 12 months

- This table was removed from the publication in July 2013

Trained regular outflow

- 9a. Trained regular Officer outflow
- 9b. Trained Regular Rating outflow

Trained Regular Voluntary Outflow

- 10a. Trained Regular Officer voluntary outflow exits by paid rank
- 10b. Trained Regular Rating voluntary outflow exits by paid rank

Trained regular promotion to substantive rank

- 11a. Trained regular Officer promotions to substantive rank
- 11b. Trained regular Ratings promotions to substantive rank

Gains to the Trained Strength (GTS)

- 12a. Gains to the Officer trained strength by Branch showing the last 4 full financial years and the last 12 months.
- 12b. Gains to the Ratings trained strength by Branch showing the last 4 full financial years and the last 12 months

Trained Intake from 'Civil Life' or 'Another Service'

- 13a. Trained intake to the regular service showing the last 4 full financial years, the last 12 months and the last month

Summary of NATO Ranks

Officers				
NATO Rank	Royal Navy	Royal Marines	Army	RAF
OF10	Admiral of The Fleet	N/A	Field Marshal	Marshal of the RAF
OF9	Admiral of The Fleet	General	General	Air Chief Marshal
OF8	Vice Admiral	Lieutenant General	Lt – General	Air Marshal
OF7	Rear Admiral	Major General	Major General	Air Vice Marshal
OF6	Commodore	Brigadier	Brigadier	Air Commodore
OF5	Captain	Colonel	Colonel	Group Captain
OF4	Commander	Lt Colonel	Lt Colonel	Wing Commander
OF3	Lieutenant Commander	Major	Major	Squadron Leader
OF2	Lieutenant	Captain	Captain	Flight Lieutenant
OF1	Sub-Lieutenant	Lieutenant / 2 nd Lieutenant	Lieutenant / 2 nd Lieutenant	Flying Officer / Pilot Officer
OFD	Officer Designate	Officer Designate	N/A	N/A

Ratings				
NATO Rank	Royal Navy	Royal Marines	Army	RAF
OR9	Warrant Officer 1	Warrant Officer 1	Warrant Officer 1	Warrant Officer
OR8	Warrant Officer 2	Warrant Officer 2	Warrant Officer 2	N/A
OR7	Chief Petty Officer	Colour Sergeant	Staff Sergeant	Flight Sergeant
OR6	Petty Officer	Sergeant	Sergeant	Sergeant
OR5	N/A	N/A	N/A	N/A
OR4	Leading Rate	Corporal	Corporal	Corporal
OR3	N/A	Lance Corporal	Lance Corporal	N/A
OR2	Able Rate	Marine (1 st Class)	Private	JT/LAC/SAC/AC
OR1*	Ordinary Rate / Junior	Marine (2 nd Class) / Junior	N/A	N/A

* Now obsolete

Glossary of Terms and Specialisations used within this publication

Term	Definition
Officer	An officer is a member of the Armed Forces holding the Queen's Commission to lead and command elements of the forces. Officers form the middle and senior management of the Armed Forces. This includes ranks from Sub-Lt/2nd Lt/Pilot Officer up to Admiral of the Fleet/Field Marshal/Marshal of the Royal Air Force, but excludes Non-Commissioned Officers
Other Ranks / Ratings	Other Ranks are members of the Royal Marines who are not Officers (but Other Ranks do include Non-Commissioned Officers). The equivalent group in the Royal Navy is known as "Ratings".
Ministry of Defence	The Ministry of Defence (MOD) is the United Kingdom government department responsible for the development and implementation of government defence policy and is the headquarters of the British Armed Forces. The principal objective of the MOD is to defend the United Kingdom and its interests. The MOD also manages day to day running of the armed forces, contingency planning and defence procurement.
RNR	Royal Naval Reserve is the Volunteer Reserve element of the Royal Navy. Together with the Royal Marine Reserve they make up the Maritime Reserve .
RMR	Royal Marine Reserve is the Volunteer Reserve element of the Royal Marines. Together with the Royal Naval Reserve they make up the Maritime Reserve .
Maritime Reserve	Is the Volunteer Reserve element of the Naval Service that count towards the Future Reserve 2020 (FR20) programme. They comprise the Royal Naval Reserve and the Royal Marine Reserve and include mobilised and High Readiness Maritime Reserve personnel, plus Maritime Reserve personnel serving on FTRS and ADC contracts. The FR20 Trained Strength target for the Maritime Reserve is 3,100.
FTRS	FTRS (Full-Time Reserve Service) are personnel who fill Service posts for a set period on a full-time basis (this is different from mobilisation) while being a member of one of the Reserve Forces, either as an ex-regular or as a volunteer. An FTRS reservist on: Each Service uses FTRS personnel differently. The Naval Service predominantly uses FTRS to backfill gapped regular posts. However, they do have a small number of FTRS personnel that are not deployable for operations overseas.
FTRS Regular	FTRS Personnel counted against the Regular Liability
FTRS Non Regular	FTRS Personnel not counted against the Regular Liability
Transfer Trainees	Trained Personnel undergoing further training in an alternative discipline
GS	General Service - Surface Fleet
SM	Submarine - Submarines

FAA	Fleet Air Arm – The Royal Navy’s Aviation branch.
XR	Warfare General Service
XSM	Warfare Submarine
XAV	Warfare Aviation and RM Aircrew
EGS	General Service Engineers
ESM	Submarine Engineers
EAE	Aviation Engineers
QARNNS	Queen Alexandra’s Royal Naval Nursing Service – the Nursing branch of the Royal Navy which work alongside the Royal Navy Medical Branch
Strength	Is defined as the number of personnel (for each Service it is partially determined by its requirements)
Trained Strength	Comprises military personnel who have completed Phase 1 and 2 training. Phase 1 training includes all new entry training to provide basic military skills. Phase 2 training includes initial individual specialisation, sub-specialisation and technical training following Phase 1 training prior to joining the trained strength.
Untrained strength	Comprises military personnel who have yet to complete Phase 2 training.

Specialisation	Definition
AEA	Air Engineer Artificer
AEM	Air Engineer Mechanic
AET	Air Engineering Technician
CIS	Communications Information Systems
CISSM	Communications Information Systems Submarine
CMA	Chartered Management Accountant
CT	Communications Technician
Dental Hyg	Dental Hygienist
Dental SA	Dental Surgery Assistant
E(IS SM)	Engineer - Information Systems Submarine
E(IS)	Engineer - Information Systems
E(TM SM)	Engineering Training Manager Submarine
E(TM)	Engineering Training Manager
ET(ME)	Engineering Technician Marine Engineer
ET(MESM)	Engineering Technician Marine Engineer Submarine
ET(WE)	Engineering Technician Weapon Engineer
ET(WESM)	Engineering Technician Weapon Engineer Submarine
ETS	Education Training & Support
HM	Hydrographical Meteorological
HM(H)	HM(Hydrographic) (formally Survey Recorders)
HM(M)	HM(Meteorological) (formally NA(Meteorological))
Med Asst	Medical Assistant
Med Tech	Medical Technician

Specialisation	Definition
MEM	Marine Engineering Mechanic
NA(AC)	Naval Airman Aircraft Controller
NA(AH)	Naval Airman Aircraft Handler
NA(PHOT)	Naval Airman Photographer
NA(SE)	Naval Airman Survival Equipment
PT	Physical Training Instructor
PWO	Principal Warfare Officer
PWO(A)	Principal Warfare Officer (Air)
PWO(C)	Principal Warfare Officer (Communications)
PWO(N)	Principal Warfare Officer (Navigation)
PWO(U)	Principal Warfare Officer (Underwater)
WEM	Weapon Engineering Mechanic
WS	Warfare Specialist
WS(AWT)	Warfare Specialist - Above Water Tactical
WS(AWW)	Warfare Specialist - Above Water Warfare
WS(EW)	Warfare Specialist - Electronic Warfare
WS(SSM)	Warfare Specialist Sensors Submarine
WS(TSM)	Warfare Specialist Tactical Submarine
WS(UW)	Warfare Specialist - Underwater Warfare

Revisions

Defence Statistics has undertaken a major review of all Armed Forces personnel data from the Joint Personnel Administration System (JPA). This has resulted in changes to the strength's, intake and outflow reported in this publication, the periods affected are: FLOWS – from period ending 31 March 2009 to the period ending 31 October 2011, changes to monthly outflow range from fewer than 10 to around 50. STRENGTHS – from 1 May 2009 to 1 November 2011 (inclusive), changes of around 20 per month have been made to the headline strengths. The revised data are considered finalised and are therefore no longer marked provisional. Data for 1 November 2011 and subsequent data are considered final.

The number of trained regular outflows (tables 9a, 9b, 10a and 10b) and promotions (table 11a) for financial years 2010/11, 2011/12 was reported incorrectly in previous situation reports dating from November 2012 to August 2014. Correct figures are reported in September 2014 and subsequent situation reports. No previous publications have been revised. Corrections in September's publication are denoted by 'r'.

Data Sources

Royal Navy/ Royal Marines statistics prior to March 2006 are compiled from pay records held by the Service Personnel and Veterans Agency (SPVA, formerly the Armed Forces Personnel Administration Agency). In March 2006 the transfer of all Regular Service personnel records to the Joint Personnel Administration (JPA) system began. Statistics are compiled from JPA for the Royal Navy/ Royal Marines from November 2006.

Rounding Policy

All totals are rounded in accordance with the Defence Statistics rounding policy; therefore totals may not equal the sum of their parts. All numbers are rounded to the nearest 10 with numbers ending in 5 rounded to the nearest multiple of 20 to avoid bias. Numbers that would be rounded to 0 are represented by '~'.

Liability

Liability is also known as requirement. The liability used in this publication is taken from the Planning Liability PL 2-14, scaled to DP14. Liability for the Royal Navy / Royal Marines for 2013-14 have been reviewed and revised (see table 1a). This revision was due to an update made to the Royal Navy / Royal Marines liability between August 2013 and June 2014.

Corresponding revisions have also been made in the Quarterly Personnel Report and Monthly Personnel Report. No previously published publications have been revised.

Feedback

At Defence Statistics we welcome feedback on our statistical products, if you have any comments or questions about this publication or about the statistics produced by Defence Statistic in general, please contact us as follows:

Contact: **Defence Statistics**

Email: DefStrat-Stat-Navy@mod.uk

Visit our website: www.gov.uk/organisations/ministry-of-defence/about/statistics

1a

Royal Navy and Royal Marines Trained Strengths and Liability

	Apr-11	Apr-12	Apr-13	Apr-14
RN/RM Regulars	35,250	33,190	31,280	30,310
FTRS "Regulars" *	180	100	150	200
FTRS "Non-Regulars" *	250	260	250	300

	Jun-14	Jul-14	Aug-14	Sep-14	Oct-14	Nov-14	Dec-14
	30,100	30,180	30,210	30,040	29,990	30,020	29,960
	210	230	220	220	230	230	240
	310	310	320	330	330	330	330

Total	RN/RM Strength	35,420	33,290	31,420	30,510
	Royal Navy	27,860	25,970	24,430	23,260
	Royal Marines	7,380	7,220	6,850	7,050
	FTRS "Regulars" *	180	100	150	200
	Liability	35,700	34,800	30,530	30,340
	Regular Surplus/Deficit	-450	-1,610	750	-40
	Regular Surplus/Deficit (%)	-1.3%	-4.6%	2.4%	-0.1%
	Total Surplus/Deficit	-280	-1,510	890	160
	Total Surplus/Deficit (%)	-0.8%	-4.3%	2.9%	0.5%

	30,320	30,410	30,440	30,270	30,220	30,250	30,200
	23,100	23,150	23,140	23,020	22,960	22,950	22,900
	7,000	7,030	7,080	7,020	7,030	7,070	7,060
	210	230	220	220	230	230	240
	30,340	30,330	30,330	30,320	30,310	30,310	30,310
	-230	-150	-110	-270	-320	-290	-340
	-0.8%	-0.5%	-0.4%	-0.9%	-1.1%	-1.0%	-1.1%
	-20	80	110	-50	-90	-60	-100
	-0.1%	0.3%	0.4%	-0.2%	-0.3%	-0.2%	-0.3%

Officers	6,620	6,410	6,240	6,100
Royal Navy (inc Careers)	5,720	5,560	5,400	5,250
RM GS (inc Careers)	790	780	750	750
RM Band	10	10	10	10
Transfer Trainees	30	20	10	10
FTRS "Regulars" *	80	40	60	80
Liability	6,610	6,500	5,810	5,850
Surplus/Deficit	10	-90	420	240
Surplus/Deficit (%)	0.1%	-1.4%	7.3%	4.1%

	6,080	6,090	6,060	6,030	6,020	6,030	6,010
	5,250	5,250	5,230	5,200	5,200	5,200	5,200
	740	730	730	730	720	720	710
	10	10	10	10	10	10	10
	10	10	10	10	10	10	-
	80	80	80	80	80	80	80
	5,950	5,950	5,940	5,940	5,940	5,930	5,930
	130	140	120	90	90	90	80
	2.2%	2.4%	2.0%	1.5%	1.5%	1.6%	1.4%

Ratings	28,800	26,880	25,190	24,410
XR	5,530	5,140	4,720	4,480
XSM	860	830	790	760
XAV	820	790	730	690
Eng GS	5,100	4,490	4,100	3,740
Eng SM	2,150	2,130	2,060	1,970
Air Eng	3,530	3,260	3,110	3,030
Logistics	3,180	2,880	2,680	2,630
Medical	980	950	920	900
RM GS	6,130	5,960	5,630	5,720
RM Band	330	340	340	340
FTRS "Regulars" *	100	60	90	120
Unknown	-	-	-	-
Transfer Trainees	80	50	30	30
Liability	29,090	28,300	24,720	24,490
Surplus/Deficit	-290	-1,420	470	-80
Surplus/Deficit (%)	-1.0%	-5.0%	1.9%	-0.3%

	24,240	24,320	24,380	24,240	24,200	24,220	24,200
	4,440	4,430	4,450	4,430	4,420	4,410	4,420
	760	770	780	770	770	770	770
	700	720	710	710	700	690	690
	3,690	3,670	3,680	3,660	3,640	3,640	3,610
	1,940	1,980	1,950	1,930	1,940	1,920	1,920
	3,010	3,000	3,000	2,990	2,980	3,000	3,000
	2,600	2,600	2,600	2,600	2,600	2,580	2,580
	900	910	910	910	910	900	900
	5,690	5,720	5,780	5,740	5,720	5,780	5,770
	340	340	340	330	350	350	350
	130	150	140	140	140	150	160
	-	-	-	-	-	-	-
	30	30	30	30	30	30	40
	24,390	24,380	24,380	24,380	24,380	24,380	24,380
	-150	-70	-10	-140	-180	-160	-180
	-0.6%	-0.3%	0.0%	-0.6%	-0.7%	-0.6%	-0.7%

Dec-14 Edition.

From Jan 10 and elsewhere in this document, Liability split by Officer/Rating, Branch & Spec is taken from the relevant Planning Liability (currently PL 2-14) scaled to DP. Monthly liability figures are calculated using a straight line interpolation between the relevant PL April points (currently April 14 and April 15).

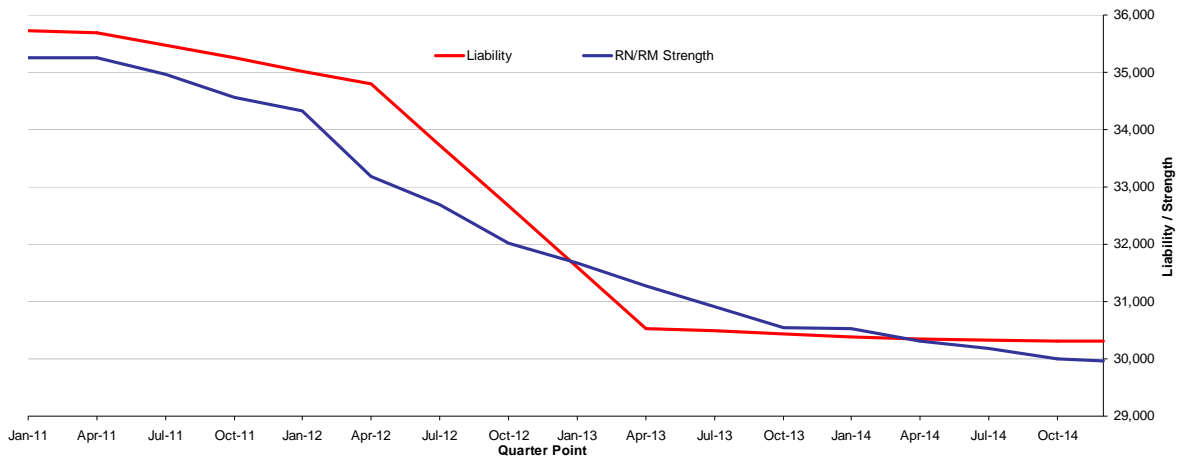
* In this table only, the FTRS Strength has been split into those that are counted against the Regular Liability (FTRS "Regulars"), and those that are not (FTRS "Non-Regulars").

1b Summary of Royal Navy and Royal Marines Strength by Service and Arm

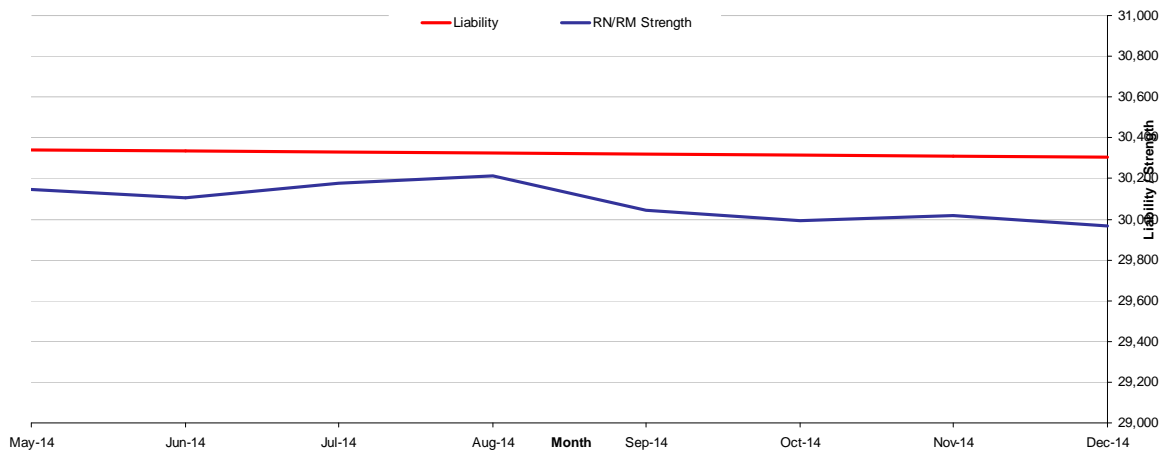
Total	30,200		
Royal Navy	23,110		
Royal Marines	7,100		
Officers Ratings			
Total	6,010	24,200	
Royal Navy	5,270	17,830	
Royal Marines	740	6,360	
GS SM FAA			
Total	21,080	4,090	5,040
Royal Navy	14,060	4,090	4,960
Royal Marines	7,010	-	90

The strength shown is the total trained Regular and FTRS Regular Personnel
RN/RM figures are the Royal Navy and Royal Marines combined

1c Historic Trained Regular Royal Navy and Royal Marines Strengths and Liability by Quarter



1d Recent Trained Regular Royal Navy and Royal Marines Strengths and Liability by Month



2a

Trained Regular Royal Navy and Royal Marine Officer Strengths* and Liability** by Branch, Specialisation and Arm

Branch	Specialisation	GS	SM	FAA	Total	Liability	Surplus/Deficit
Total		3,820	870	1,230	5,920	5,930	-10
Warfare		1,360	310	910	2,580	2,570	10
	Air Traffic Control	-	-	80	80		
	Aviation	-	-	40	40		
	Communicators	30	-	-	30		
	Intelligence Officer	120	-	-	120		
	Fighter Controller	40	-	-	40		
	General Service Warfare	320	-	-	320		
	HM	170	-	-	170		
	Mine Clearance Diver	70	-	-	70		
	Mine Warfare	20	-	-	20		
	Observer	-	-	320	320		
	Pilot	-	-	470	470		
	PWO	190	-	-	190		
	PWO(A)	160	-	-	160		
	PWO(C)	60	-	-	60		
	PWO(N)	70	-	-	70		
	PWO(U)	90	-	-	90		
	RN Police	20	-	-	20		
	Submariner	-	310	-	310		
	Unspecified	-	-	-	-		
Engineer		870	460	280	1,610	1,630	-20
	Air Engineer	-	-	280	280		
	E(IS)	50	-	-	50		
	E(IS SM)	-	-	-	-		
	E(TM)	200	-	-	200		
	E(TM SM)	-	20	-	20		
	Marine Engineer	260	-	-	260		
	Marine Engineer (SM)	-	240	-	240		
	Weapons Engineer	360	-	-	360		
	Weapons Engineer (SM)	-	200	-	200		
	Unspecified	-	-	-	-		
Logistics		410	100	-	510	490	20
	Barrister	40	-	-	40		
	CMA	20	-	-	20		
	Logistics	360	90	-	450		
	Logistics Family Services	-	-	-	-		
Medical		260	-	-	260	230	30
Medical Services		60	-	-	60	60	-
Dental Services		50	-	-	50	60	-10
QARNNS		70	-	-	70	100	-30
Chaplain		60	-	-	60	60	-
Royal Marines		680	-	40	720	720	-
	Band Service	10	-	-	10		
	General Service	670	-	-	670		
	Pilot	-	-	40	40		

* The Trained Strength shown in this table does not include the Transfer Trainee Strength, hence the slightly lower figures.

** Smoothed Planning Liability 2-14 has been used and scaled to the interpolated monthly DP14 total figure.

2b

Trained Regular Royal Navy and Royal Marines Rating Strengths* and Liability** by Branch, Specialisation and Arm

Branch	Specialisation	GS	SM	FAA	Total	Liability	Surplus/Deficit
Total		17,060	3,160	3,780	24,000	24,380	-380
XR		4,320	-	100	4,420	4,680	-260
	WS	360	-	-	360	-	-
	WS(AWT)	330	-	-	330	-	-
	WS(AWW)	320	-	-	320	-	-
	WS(UW)	260	-	-	260	-	-
	WS(EW)	360	-	-	360	-	-
	CIS	710	-	-	710	-	-
	HM	10	-	-	10	-	-
	HM(H)	90	-	-	90	-	-
	HM(M)	-	-	100	100	-	-
	Mine Warfare	320	-	-	320	-	-
	Diver	340	-	-	340	-	-
	Seaman Specialist	590	-	-	590	-	-
	Weapons Analyst	-	-	-	-	-	-
	PT	190	-	-	190	-	-
	RN Police	220	-	-	220	-	-
	CT	220	-	-	220	-	-
XSM		-	770	-	770	770	-
	Coxswain (SM)	-	30	-	30	-	-
	WS(SSM)	-	310	-	310	-	-
	WS(TSM)	-	210	-	210	-	-
	CISSM	-	220	-	220	-	-
XAV		-	-	690	690	750	-60
	Aircrewman	-	-	100	100	-	-
	NA(AC)	-	-	100	100	-	-
	NA(AH)	-	-	400	400	-	-
	NA(PHOT)	-	-	50	50	-	-
	RM Aircrewman	-	-	40	40	-	-
Engineer General Service		3,610	-	-	3,610	3,930	-320
	MEM	130	-	-	130	-	-
	WEM	40	-	-	40	-	-
	ET(ME)	2,020	-	-	2,020	-	-
	ET(WE)	1,420	-	-	1,420	-	-
	ETS	-	-	-	-	-	-
Engineer Submariner		-	1,920	-	1,920	2,010	-90
	ET(MESM)	-	1,110	-	1,110	-	-
	ET(WESM)	-	790	-	790	-	-
	MEM	-	20	-	20	-	-
	WEM	-	~	-	~	-	-
Air Engineer		-	-	3,000	3,000	2,860	140
	AEA	-	-	80	80	-	-
	AEM	-	-	100	100	-	-
	AET	-	-	2,680	2,680	-	-
	NA(SE)	-	-	140	140	-	-
Logistics		2,180	400	-	2,580	2,560	20
	Caterer	120	20	-	130	-	-
	Chef	500	130	-	630	-	-
	Family Service	30	-	-	30	-	-
	Steward	300	80	-	380	-	-
	Supply Chain	480	100	-	580	-	-
	Writer	650	80	-	730	-	-
	RM Chef	100	-	-	100	-	-
Medical		820	80	-	900	960	-60
	Dental Hyg	10	-	-	10	-	-
	Dental SA	80	-	-	80	-	-
	Med Assist	470	80	-	540	-	-
	Med Tech	40	-	-	40	-	-
	Naval Nurse	160	-	-	160	-	-
	RM Med Assist	60	-	-	60	-	-
Marines (excl MA & Acmn)		6,120	-	-	6,120	5,860	260
	Band	270	-	-	270	-	-
	Bugler	70	-	-	70	-	-
	General Service	5,770	-	-	5,770	-	-

* The Trained Strength shown in this table does not include the Transfer Trainee Strength, hence the slightly lower figures.

** Smoothed Planning Liability 2-14 has been used and scaled to the interpolated monthly DP14 total figure.

**2c Royal Navy and Royal Marines FTRS Officer
(Regular and Non-Regular) Strengths by
Branch, Specialisation and Arm**

Branch	Specialisation	GS	SM	FAA	Total
Total		130	10	20	160
Warfare		40	10	20	70
	Air Traffic Control	-	-	~	~
	Aviation	-	-	~	~
	Communications	~	-	-	~
	Intelligence Officer	-	-	-	-
	Fighter Controller	-	-	-	-
	General Service Warfare	10	-	-	10
	HM	~	-	-	~
	Mine Clearance Diver	~	-	-	~
	Mine Warfare	10	-	-	10
	Observer	-	-	~	~
	Pilot	-	-	~	~
	PWO	~	-	-	~
	PWO(A)	10	-	-	10
	PWO(C)	~	-	-	~
	PWO(N)	~	-	-	~
	PWO(U)	10	-	-	10
	RN Police	-	-	-	-
	Submariner	-	10	-	10
	Unspecified	~	~	-	~
Engineer		10	~	~	20
	Air Engineer	-	-	~	~
	E(IS)	~	-	-	~
	E(IS SM)	-	-	-	-
	E(TM)	~	-	-	~
	E(TM SM)	-	-	-	-
	Marine Engineer	~	-	-	~
	Marine Engineer (SM)	-	~	-	~
	Weapons Engineer	~	-	-	~
	Weapons Engineer (SM)	-	~	-	~
	Unspecified	-	-	-	-
Logistics		20	-	-	20
	Barrister	-	-	-	-
	CMA	-	-	-	-
	Logistics	20	-	-	20
	Logistics Family Services	-	-	-	-
Medical		-	-	-	-
Medical Services		-	-	-	-
Dental Services		-	-	-	-
QARNNS		~	-	-	~
Chaplain		~	-	-	~
Careers		~	-	-	~
Royal Marines		10	-	-	10
	Band Service	-	-	-	-
	General Service	10	-	-	10
	Pilot	-	-	-	-
RNR		40	-	-	40
RMR		-	-	-	-

**Royal Navy and Royal Marines FTRS Rating
(Regular and Non-Regular) Strengths by
Branch, Specialisation and Arm**

Branch	Specialisation	GS	SM	FAA	Total
Total		340	50	20	410
XR		80	-	-	90
	WS	-	-	-	-
	WS(AWT)	10	-	-	10
	WS(AWW)	10	-	-	10
	WS(UW)	-	-	-	-
	WS(EW)	-	-	-	-
	CIS	20	-	-	20
	HM	-	-	-	-
	HM(H)	-	-	-	-
	HM(M)	-	-	-	-
	Mine Warfare	-	-	-	-
	Diver	-	-	-	-
	Seaman Specialist	20	-	-	20
	Weapons Analyst	-	-	-	-
	PT	10	-	-	10
	RN Police	10	-	-	10
	CT	-	-	-	-
	Unspecified	-	-	-	-
XSM		-	10	-	10
	Coxswain (SM)	-	-	-	-
	WS(SSM)	-	-	-	-
	WS(TSM)	-	-	-	-
	CISSM	-	-	-	-
XAV		-	-	10	10
	Aircrewman	-	-	-	-
	NA(AC)	-	-	-	-
	NA(AH)	-	-	-	-
	NA(PHOT)	-	-	-	-
	RM Aircrewman	-	-	-	-
	Unspecified	-	-	-	-
Engineer General Service		20	-	-	20
	MEM	10	-	-	10
	WEM	10	-	-	10
	ET(ME)	10	-	-	10
	ET(WE)	-	-	-	-
	ETS	-	-	-	-
	Unspecified	-	-	-	-
Engineer Submariner		-	40	-	40
	ET(MESM)	-	20	-	20
	ET(WESM)	-	20	-	20
	MEM	-	-	-	-
	WEM	-	-	-	-
Air Engineer		-	-	10	10
	AEA	-	-	-	-
	AEM	-	-	-	-
	AET	-	-	-	-
	NA(SE)	-	-	-	-
Logistics		20	-	-	20
	Caterer	10	-	-	10
	Chef	-	-	-	-
	Family Service	-	-	-	-
	Steward	-	-	-	-
	Supply Chain	10	-	-	10
	Writer	10	-	-	10
	Unspecified	-	-	-	-
Medical		-	-	-	-
	Dental Hyg	-	-	-	-
	Dental SA	-	-	-	-
	Med Assist	-	-	-	-
	Naval Nurse	-	-	-	-
	RM Med Assist	-	-	-	-
	Med Tech	-	-	-	-
	Unspecified	-	-	-	-
Marines (excl MA & Acmn)		50	-	-	50
	Band	-	-	-	-
	Bugler	-	-	-	-
	General Service	50	-	-	50
RNR		-	-	-	-
RMR		-	-	-	-
Careers		160	-	-	160

3a Trained* Regular Royal Navy and Royal Marine Officer Strengths and Liability
by Branch and Paid Rank*****

Branch		OF7 and above	OF-6	OF-5	OF-4	OF-3	OF-2	OF-1	Total
Total	Strength	40	80	270	1,030	2,030	2,340	140	5,920
	Liability	30	70	250	1,010	2,000	2,570	-	5,930
	Surplus / Deficit	10	10	10	20	30	-230	140	-10
Warfare	Strength	20	30	110	360	890	1,100	70	2,580
	Liability	20	30	100	360	870	1,180	-	2,570
	Surplus / Deficit	10	~	~	~	20	-80	70	10
	% Surplus / Deficit	34.7%	-13.6%	3.5%	0.9%	2.0%	-6.8%	-	0.5%
Engineer	Strength	10	20	80	280	550	650	10	1,610
	Liability	10	20	80	270	560	690	-	1,630
	Surplus / Deficit	~	~	~	20	-10	-40	10	-20
	% Surplus / Deficit	-41.2%	-3.0%	3.8%	6.2%	-1.9%	-5.6%	-	-1.4%
Logistics	Strength	~	10	20	90	160	200	20	510
	Liability	-	10	20	100	160	210	-	490
	Surplus / Deficit	~	10	~	~	~	-10	20	20
	% Surplus / Deficit	-	97.9%	10.3%	-4.2%	0.5%	-3.1%	-	4.7%
Medical	Strength	~	~	20	80	110	50	-	260
	Liability	-	~	10	80	90	40	-	230
	Surplus / Deficit	~	~	10	~	10	~	-	30
	% Surplus / Deficit	-	54.3%	54.9%	0.9%	12.6%	11.2%	-	11.7%
Dental	Strength	-	-	10	10	20	10	-	50
	Liability	-	-	~	20	30	20	-	60
	Surplus / Deficit	-	-	~	~	~	-10	-	-10
	% Surplus / Deficit	-	-	82.0%	-20.0%	-6.6%	-63.6%	-	-20.6%
Medical Services	Strength	-	-	~	10	20	20	~	60
	Liability	-	-	~	10	20	30	-	60
	Surplus / Deficit	-	-	~	~	~	-10	~	~
	% Surplus / Deficit	-	-	1.1%	9.4%	-2.3%	-23.9%	-	-7.3%
QARNNS	Strength	-	-	~	10	30	30	~	70
	Liability	-	-	~	10	40	50	-	100
	Surplus / Deficit	-	-	~	~	-10	-20	~	-30
	% Surplus / Deficit	-	-	1.1%	-5.6%	-24.6%	-45.7%	-	-29.9%
Chaplain	Strength	~	~	-	50	-	-	-	60
	Liability	~	~	~	60	-	-	-	60
	Surplus / Deficit	~	~	~	~	-	-	-	~
	% Surplus / Deficit	1.1%	-	-100.0%	-6.1%	-	-	-	-2.4%
RM General Service	Strength	~	10	30	120	240	280	20	710
	Liability	~	10	30	110	220	340	-	710
	Surplus / Deficit	see note 1	10	~	10	20	-60	20	~
	% Surplus / Deficit	see note 1	65.5%	-7.1%	8.0%	9.9%	-18.2%	-	-0.2%
RM Band	Strength	-	-	-	~	~	~	~	10
	Liability	-	-	-	~	~	~	-	10
	Surplus / Deficit	-	-	-	~	~	~	~	~
	% Surplus / Deficit	-	-	-	2.7%	3.4%	3.3%	-	23.9%
Careers/Other	Strength	-	-	-	-	-	-	-	-
	Liability	-	-	-	-	-	-	-	-
	Surplus / Deficit	-	-	-	-	-	-	-	-
	% Surplus / Deficit	-	-	-	-	-	-	-	-
Unspecified	Strength	-	-	-	-	-	-	-	-
	Liability	-	-	-	-	-	-	-	-

Dec-14 Edition.

* The Trained Strength shown in this table does not include the Transfer Trainee Strength, hence the slightly lower figures.

** Smoothed Planning Liability 2-14 has been used and scaled to the interpolated monthly DP14 total figure.

*** Figures exclude FTRS personnel in regular posts.

¹ At OF7+ RM GS Officers are assigned under the same regime as their RN counterparts, occupying common appointments where liability is attributable across the RN/RM OF7+ population.

3b Trained* Regular Royal Navy and Royal Marines Rating Strengths and Liability
by Branch and Paid Rank*****

Branch		OR-9	OR-8 ³	OR-7	OR-6	OR-4	OR-3	OR-2	Total
Total	Strength	790	520	2,950	3,580	5,640	650	9,880	24,000
	Liability	910	230	3,140	4,350	6,010	see note 2	9,740	24,380
	Surplus / Deficit	-120	290	-190	-770	-380	650	140	-380
XR	Strength	140	~	580	750	1,150	-	1,800	4,420
	Liability	140	-	550	880	1,330	-	1,780	4,680
	Surplus / Deficit	10	~	30	-130	-180	-	20	-260
	% Surplus / Deficit	4.3%	-	5.0%	-15.2%	-13.7%	-	1.1%	-5.5%
XSM	Strength	30	-	100	110	170	-	360	770
	Liability	30	-	100	120	170	-	340	770
	Surplus / Deficit	~	-	~	-10	-10	-	20	~
	% Surplus / Deficit	3.7%	-	-2.4%	-9.4%	-3.9%	-	5.4%	-0.1%
XAV	Strength	30	-	80	140	200	-	240	690
	Liability	30	-	90	180	250	-	190	750
	Surplus / Deficit	~	-	-10	-40	-60	-	50	-60
	% Surplus / Deficit	-7.1%	-	-13.5%	-20.8%	-22.0%	-	26.3%	-7.8%
EGS	Strength	260	80	640	560	770	-	1,300	3,610
	Liability	310	-	720	920	830	-	1,150	3,930
	Surplus / Deficit	-60	80	-70	-360	-70	-	150	-320
	% Surplus / Deficit	-18.2%	-	-10.3%	-39.5%	-8.0%	-	13.4%	-8.2%
ESM	Strength	70	150	380	230	400	-	700	1,920
	Liability	140	-	520	380	420	-	550	2,010
	Surplus / Deficit	-70	150	-150	-150	-20	-	150	-90
	% Surplus / Deficit	-51.3%	-	-28.2%	-38.6%	-4.6%	-	27.0%	-4.6%
EAE	Strength	80	40	430	620	790	-	1,040	3,000
	Liability	90	-	460	610	730	-	970	2,860
	Surplus / Deficit	-20	40	-30	10	60	-	70	140
	% Surplus / Deficit	-16.7%	-	-6.0%	2.2%	8.7%	-	6.9%	5.0%
LOGS	Strength	60	~	230	400	760	10	1,120	2,580
	Liability	60	-	220	410	770	-	1,110	2,560
	Surplus / Deficit	10	~	10	-10	-10	10	10	20
	% Surplus / Deficit	11.9%	-	5.6%	-2.4%	-1.2%	-	0.7%	0.6%
MED	Strength	30	~	120	170	280	10	290	900
	Liability	30	-	110	200	320	-	300	960
	Surplus / Deficit	~	~	10	-30	-40	10	~	-60
	% Surplus / Deficit	-9.0%	-	6.2%	-15.3%	-13.3%	-	-1.2%	-6.5%
RM GS	<i>Excludes RM Med Assistant, RM Aircrewman, RM Band and RM Careers Service and RM Chets</i>								
	Strength	80	230	370	550	1,070	630	2,840	5,770
	Liability	70	220	350	590	1,130	see note 2	3,170	5,520
	Surplus / Deficit	10	10	20	-40	-60	630	-330	250
	% Surplus / Deficit	17.8%	5.3%	6.4%	-6.3%	-5.1%	-	-10.5%	4.6%
RM Band	Strength	10	10	30	40	60	-	190	350
	Liability	~	10	30	50	60	-	190	340
	Surplus / Deficit	~	~	10	-10	~	-	~	10
	% Surplus / Deficit	22.5%	22.9%	23.1%	-17.4%	3.7%	-	2.6%	2.0%
Unspecified	Strength	-	-	-	-	-	-	-	-
	Liability	-	-	-	-	-	-	-	-
CAPPS	Liability	-	-	-	-	-	-	-	-

Dec-14 Edition.

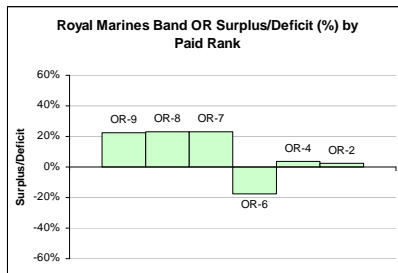
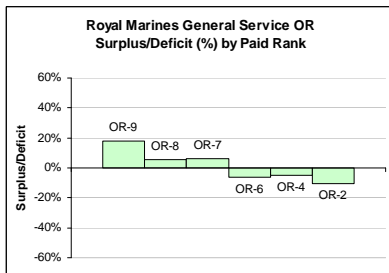
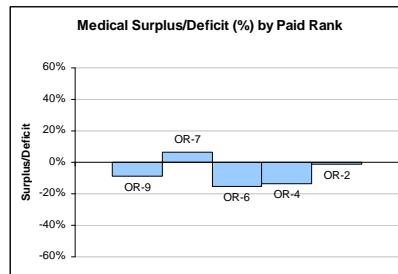
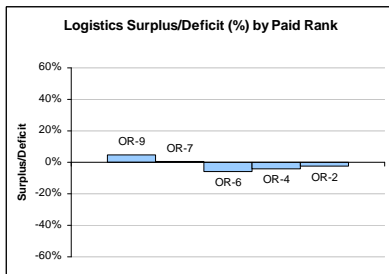
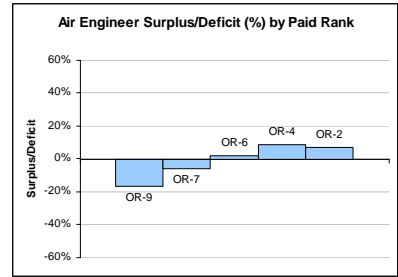
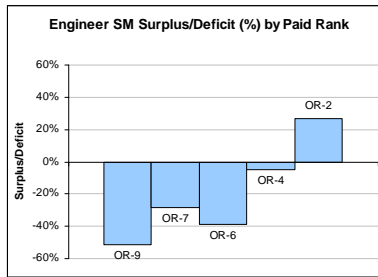
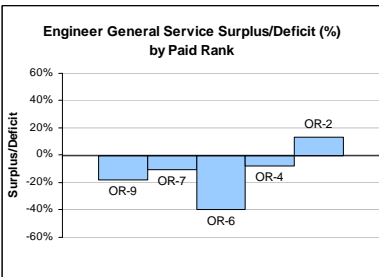
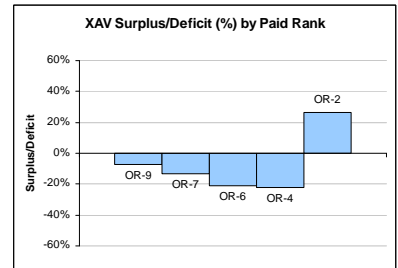
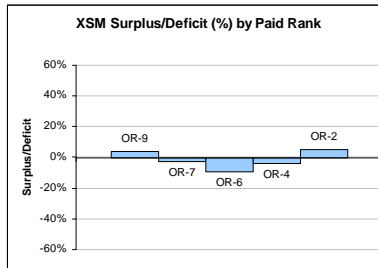
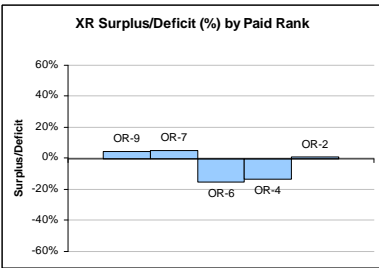
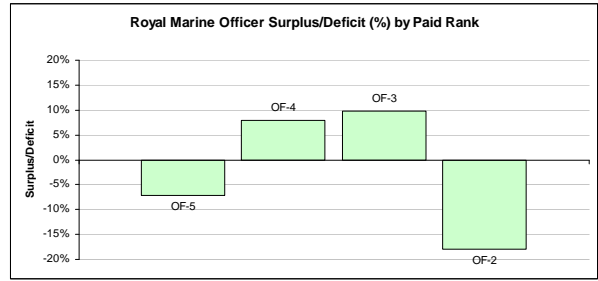
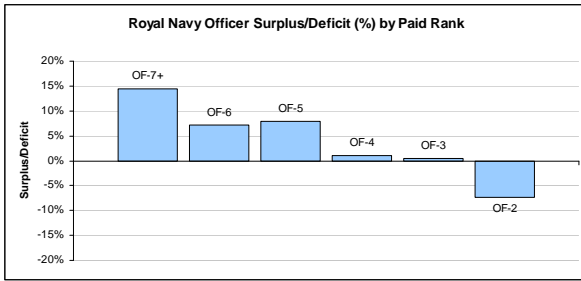
* The Trained Strength shown in this table does not include the Transfer Trainee Strength, hence the slightly lower figures.

** Smoothed Planning Liability 2-14 has been used and scaled to the interpolated monthly DP14 total figure.

*** Figures exclude FTRS personnel in regular posts.

² Royal Marines are the only part of the RN/RM Service to currently contain OR3 strength. As no separate liability for OR3 is produced for the RN/RM, the liability for OR2 also includes OR3.

³ The latest liability (PL2-14) no longer includes RN OR8. This rank will still be reflected in RN strength.



3e Royal Navy and Royal Marine Officer FTRS (Regular and Non-Regular) Strength by Branch and Paid Rank								
Branch	OF7+	OF6	OF5	OF4	OF3	OF2	OF1	Total
Total	-	-	10	50	80	20	-	160
Warfare	-	-	~	20	40	~	-	70
Engineer	-	-	~	~	~	~	-	20
Logistics	-	-	~	10	10	~	~	20
Medical	-	-	-	-	-	-	-	-
Medical Services	-	-	-	-	-	-	-	-
Dental	-	-	-	-	-	-	-	-
QARNNS	-	-	-	-	~	~	-	~
Chaplain	-	-	-	~	-	-	-	~
RM General Service	-	-	~	~	10	~	-	10
RM Band	-	-	-	-	-	-	-	-
RNR	-	-	~	10	20	10	-	40
RMR	-	-	-	-	-	-	-	-
Careers/Other	-	-	-	-	-	~	-	~

Dec-14 Edition.

3f Royal Navy and Royal Marine Rating FTRS (Regular and Non-Regular) Strength by Branch and Paid Rank								
Branch	OR9	OR8	OR7	OR6	OR4	OR3	OR2	Total
Total	50	20	160	140	10	~	20	410
XR	10	~	30	30	~	-	10	90
XSM	~	-	~	~	~	-	-	10
XAV	-	-	~	~	~	-	-	10
EGS	~	~	20	~	~	-	-	20
ESM	~	10	20	10	~	-	-	40
EAE	~	-	~	~	-	-	-	10
LOGS	~	-	10	~	~	-	-	20
MED	-	-	-	-	-	-	-	-
RM GS	~	~	10	10	~	~	20	50
<i>Excludes RM Med Assistant, RM Aircrewman, RM Band and RM Careers Service</i>								
RM Band	-	-	-	-	-	-	-	-
RNR	-	-	~	-	-	-	-	~
RMR	-	-	-	-	-	-	-	-
Career	30	10	50	70	-	-	-	160
Unspecified	-	-	-	-	-	-	-	-

Dec-14 Edition.

4a (GS)

**Trained* Regular Royal Navy and Royal Marine Officer General Service
Strengths by Branch and Specialisation and Paid Rank**

Branch	Specialisation	OF-7 and above	OF-6	OF-5	OF-4	OF-3	OF-2	OF-1	Total
Total		30	50	170	680	1,330	1,440	120	3,820
Warfare		20	10	60	190	480	550	50	1,360
	Communications	-	-	-	~	10	10	~	30
	Intelligence Officer	-	-	-	~	50	60	~	120
	Fighter Controller	-	-	-	-	10	30	~	40
	General Service Warfare	-	-	-	-	20	260	40	320
	HM	-	-	~	30	60	80	~	170
	Mine Clearance Diver	-	-	-	~	30	40	-	70
	Mine Warfare	-	-	-	-	10	10	-	20
	PWO	-	~	~	20	130	30	-	190
	PWO(A)	~	~	20	60	60	~	-	160
	PWO(C)	~	~	~	20	30	~	-	60
	PWO(N)	~	~	~	20	30	10	-	70
	PWO(U)	~	~	10	40	30	-	-	90
	RN Police	-	-	-	~	10	10	~	20
	Unspecified	-	-	-	-	-	-	-	-
Engineer		~	10	40	150	310	350	10	870
	E(IS)	-	-	~	10	30	10	-	50
	E(TM)	-	~	~	20	70	90	~	200
	Marine Engineer	~	~	10	50	100	90	~	260
	Weapons Engineer	-	~	20	60	110	150	~	360
	Unspecified	-	-	-	-	-	-	-	-
Logistics		~	10	20	60	140	160	20	410
	Barrister	~	~	~	10	10	~	-	40
	CMA	-	-	~	10	10	-	-	20
	Logistics	-	~	10	40	120	150	20	360
	Logistics Family Services	-	-	-	-	~	~	-	~
Medical		~	~	20	80	110	50	-	260
Medical Services		-	-	~	10	20	20	~	60
Dental Services		-	-	10	10	20	10	-	50
QARNNS		-	-	~	10	30	30	~	70
Chaplain		~	~	-	50	-	-	-	60
Other		-	-	-	-	-	-	-	-
Royal Marines		~	10	30	120	220	270	30	680
	Band Service	-	-	-	~	~	~	~	10
	General Service	~	10	30	110	220	270	20	670

* The Trained Strength shown in this table does not include the Transfer Trainee Strength, hence the slightly lower figures.

Dec-14 Edition.

**Trained* Regular Royal Navy and Royal Marines Officer Submarine Strengths
4a (SM) by Branch and Specialisation and Paid Rank**

Branch	Specialisation	OF-7 and above	OF-6	OF-5	OF-4	OF-3	OF-2	OF-1	Total
Total		10	20	50	160	270	360	10	870
Warfare		~	10	20	50	90	130	10	310
	Submariner	~	10	20	50	90	130	10	310
Engineer		~	10	30	80	150	190	~	460
	E(IS SM)	-	-	-	-	~	~	-	~
	E(TM SM)	-	-	~	10	~	10	~	20
	Marine Engineer (SM)	~	~	10	40	80	100	-	240
	Weapons Engineer (SM)	~	~	10	30	60	80	~	200
	Unspecified	-	-	-	-	-	-	-	-
Logistics		-	~	~	30	30	40	-	100
	Barrister	-	-	-	~	~	~	-	~
	CMA	-	-	-	~	~	-	-	~
	Logistics	-	~	~	20	20	40	-	90
	Logistics Family Services	-	-	-	-	-	-	-	-
Other		-	-	-	-	-	-	-	-

* The Trained Strength shown in this table does not include the Transfer Trainee Strength, hence the slightly lower figures.

**Trained* Regular Royal Navy and Royal Marine Officer Fleet Air Arm Strengths
4a (FAA) by Branch and Specialisation and Paid Rank**

Branch	Specialisation	OF-7 and above	OF-6	OF-5	OF-4	OF-3	OF-2	OF-1	Total
Total		10	10	40	180	430	540	10	1,230
Warfare		10	10	30	120	320	420	10	910
	Air Traffic Control	-	-	~	~	20	40	~	80
	Aviation	-	-	-	~	10	30	~	40
	Observer	~	~	10	70	110	120	~	320
	Pilot	~	10	20	50	170	230	-	470
	Unspecified	-	-	-	-	-	-	-	-
Engineer		-	~	10	50	100	110	-	280
	Air Engineer	-	~	10	50	100	110	-	280
Other		-	-	-	-	-	-	-	-
Royal Marines		-	-	~	10	20	10	-	40
	Pilot	-	-	~	10	20	10	-	40

* The Trained Strength shown in this table does not include the Transfer Trainee Strength, hence the slightly lower figures.

Dec-14 Edition.

4b (GS)

**Trained* Regular Rating General Service Strengths
by Branch and Specialisation and Paid Rank**

Branch	Specialisation	OR-9	OR-8	OR-7	OR-6	OR-4	OR-3	OR-2	Total
Total		580	330	1,910	2,380	3,920	650	7,290	17,060
Warfare		140	~	560	730	1,120	-	1,760	4,320
	WS	-	-	-	-	~	-	360	360
	WS(AWT)	10	-	70	90	140	-	20	330
	WS(AWW)	20	-	70	80	120	-	20	320
	WS(UW)	10	-	40	50	60	-	100	260
	WS(EW)	10	-	40	60	90	-	170	360
	CIS	20	-	90	110	170	-	320	710
	HM	-	-	-	-	-	-	10	10
	HM(H)	~	-	10	10	20	-	50	90
	Mine Warfare	10	-	30	50	70	-	160	320
	Diver	10	-	30	50	80	-	170	340
	Seaman Specialist	10	-	30	50	130	-	360	590
	Weapons Analyst	-	-	-	-	-	-	-	-
	PT	10	-	20	60	100	-	-	190
	RN Police	10	-	40	80	90	-	-	220
	CT	20	~	100	40	50	-	10	220
	Unspecified	-	-	-	-	-	-	-	-
Engineer		260	80	640	560	770	-	1,300	3,610
	MEM	20	-	60	40	-	-	-	130
	WEM	10	-	20	10	-	-	-	40
	ET(ME)	130	30	260	290	480	-	820	2,020
	ET(WE)	90	50	300	210	290	-	480	1,420
	ETS	-	-	-	-	-	-	-	-
	Unspecified	-	-	-	-	-	-	-	-
Logistics		60	~	200	340	650	10	910	2,180
	Caterer	20	-	50	40	-	-	-	120
	Steward	-	-	-	~	110	-	190	300
	Chef	~	-	~	60	160	-	260	500
	Writer	20	-	70	120	200	-	250	650
	Supply Chain	20	-	50	90	150	-	180	480
	Family Services	~	-	10	20	-	-	-	30
	RM Chef	~	~	10	20	20	10	40	100
Med		30	~	110	150	240	10	290	820
	Dental Hyg	-	-	~	~	10	-	-	10
	Dental SA	~	-	~	10	30	-	40	80
	Med Asst	20	-	50	80	120	-	200	470
	Naval Nurse	~	-	30	40	70	-	10	160
	RM Med Asst	-	-	~	10	10	10	30	60
	Med Techn	~	~	10	10	10	-	-	40
Other		-	-	-	-	-	-	-	-
Royal Marines		90	240	400	600	1,130	630	3,030	6,120
	RM Band	10	10	30	40	60	-	190	350
	RM GS	80	230	370	550	1,070	630	2,840	5,770

* The Trained Strength shown in this table does not include the Transfer Trainee Strength, hence the slightly lower figures.

Dec-14 Edition.

**Trained* Regular Rating Submarine Strengths
by Branch and Specialisation and Paid Rank**

Branch	Specialisation	OR-9	OR-8	OR-7	OR-6	OR-4	OR-3	OR-2	Total
Total		110	150	510	420	700	-	1,270	3,160
Warfare		30	-	100	110	170	-	360	770
	Coxswain (SM)	10	-	20	-	-	-	-	30
	WS(SSM)	10	-	30	50	70	-	150	310
	WS(TSM)	10	-	30	20	40	-	110	210
	CISSM	~	-	20	30	60	-	100	220
	Unspecified	-	-	-	-	-	-	-	-
Engineer		70	150	380	230	400	-	700	1,920
	MEM	-	-	20	-	-	-	-	20
	WEM	-	-	~	-	-	-	-	~
	ET(ME)	40	100	230	110	220	-	410	1,110
	ET(WE)	30	50	120	120	180	-	290	790
	Unspecified	-	-	-	-	-	-	-	-
LOGS		-	-	30	60	100	-	200	400
	Caterer	-	-	10	~	-	-	-	20
	Steward	-	-	-	~	20	-	50	80
	Chef	-	-	~	20	40	-	70	130
	Writer	-	-	~	20	20	-	40	80
	Supply Chain	-	-	10	20	20	-	50	100
	Family Services	-	-	-	-	-	-	-	-
MED		~	-	10	20	40	-	10	80
	Med Asst	~	-	10	20	40	-	10	80
Other		-	-	-	-	-	-	-	-

* The Trained Strength shown in this table does not include the Transfer Trainee Strength, hence the slightly lower figures.

**Trained* Regular Rating Fleet Air Arm Strengths
by Branch and Specialisation and Paid Rank**

Branch	Specialisation	OR-9	OR-8	OR-7	OR-6	OR-4	OR-3	OR-2	Total
Total		100	40	520	780	1,020	-	1,320	3,780
Warfare (XAV)		30	-	80	140	200	-	240	690
	Aircrewmen	10	-	20	40	30	-	~	100
	NA(AC)	10	-	20	30	40	-	10	100
	NA(AH)	10	-	20	40	90	-	230	400
	NA(PHOT)	~	-	10	20	20	-	-	50
	RM Aircrewmen	~	-	10	20	10	-	-	40
	Unspecified	-	-	-	-	-	-	-	-
Warfare (XR)		~	-	10	20	30	-	40	100
	HM(M)	~	-	10	20	30	-	40	100
Engineer		80	40	430	620	790	-	1,040	3,000
	AEA	-	-	80	-	-	-	-	80
	AEM	10	-	40	50	-	-	-	100
	AET	60	40	290	550	740	-	990	2,680
	NA(SE)	~	-	10	20	50	-	50	140
Other		-	-	-	-	-	-	-	-

Dec-14 Edition.

* The Trained Strength shown in this table does not include the Transfer Trainee Strength, hence the slightly lower figures.

5a

Untrained Regular Royal Navy and Royal Marines Officer Strengths by Branch and Paid Rank

	OF4+	OF3	OF2	OF1	OFD	Total
Total	-	-	220	460	220	900
Warfare	-	-	120	220	140	470
Engineer	-	-	60	80	60	210
Logistics	-	-	~	10	20	40
Medical	-	-	40	50	-	80
Medical Services	-	-	-	~	-	~
Dental	-	-	~	~	-	~
QARNNS	-	-	~	~	-	~
Chaplain	-	-	-	-	-	-
No Spec	-	-	-	-	-	-
RM General Service	-	-	-	100	-	100
RM Band	-	-	-	-	-	-
Careers/Other	-	-	-	-	-	-

Dec-14 Edition.

Note: Midshipmen are counted as OF-D

**Untrained Regular Royal Navy and Royal Marine Rating
Strengths by Branch and Paid Rank**

		OR6+	OR4	OR3	OR2	Total
Total		-	-	-	2,130	2,130
XR		-	-	-	380	380
	WS	-	-	-	100	100
	CIS	-	-	-	60	60
	HM	-	-	-	10	10
	Mine Warfare	-	-	-	30	30
	Diver	-	-	-	50	50
	Seaman Specialist	-	-	-	90	90
	CT	-	-	-	30	30
	Unspecified	-	-	-	~	~
XSM		-	-	-	100	100
	WS(SSM)	-	-	-	50	50
	WS(TSM)	-	-	-	30	30
	CISSM	-	-	-	20	20
	Unspecified	-	-	-	-	-
XAV		-	-	-	60	60
	Aircrewman	-	-	-	10	10
	NA(AC)	-	-	-	10	10
	NA(AH)	-	-	-	40	40
	NA(Phot)	-	-	-	-	-
	Unspecified	-	-	-	-	-
EGS		-	-	-	270	270
	ET(ME)	-	-	-	180	180
	ET(WE)	-	-	-	100	100
	Unspecified	-	-	-	-	-
ESM		-	-	-	180	180
	ET(MESM)	-	-	-	110	110
	ET(WESM)	-	-	-	70	70
	Unspecified	-	-	-	-	-
EAE		-	-	-	280	280
	AET	-	-	-	260	260
	NA(SE)	-	-	-	20	20
	Unspecified	-	-	-	~	~
LOGS		-	-	-	160	160
	Chef	-	-	-	70	70
	Steward	-	-	-	20	20
	Supply Chain	-	-	-	40	40
	Writer	-	-	-	40	40
	Unspecified	-	-	-	-	-
MED		-	-	-	80	80
	Dental SA	-	-	-	~	~
	Med Asst	-	-	-	60	60
	Naval Nurse	-	-	-	20	20
	Unspecified	-	-	-	-	-
RM GS		-	-	-	550	550
RM Band		-	-	-	60	60
	Band	-	-	-	60	60
	Bugler	-	-	-	10	10
	Unspecified	-	-	-	-	-
Unknown		-	-	-	-	-

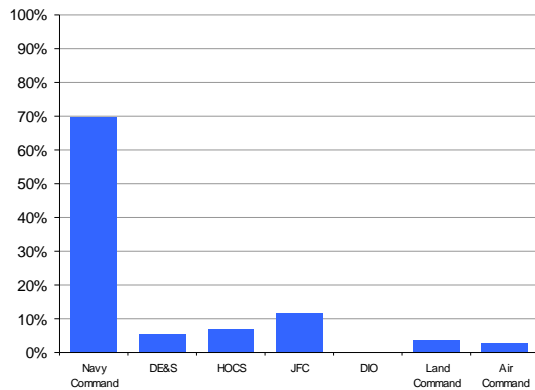
Officers

TLB										Total	% of Total Trained Strength
	OF9	OF8	OF7	OF6	OF5	OF4	OF3	OF2	OF1		
Total	~	10	30	80	270	1,030	2,030	2,340	140	5,920	100.0%
Navy Command	~	~	20	40	120	560	1,440	1,820	120	4,120	69.6%
DE&S	-	~	~	10	30	80	90	100	-	320	5.4%
HOCS	-	~	10	20	50	170	120	40	~	410	6.9%
JFC	-	~	~	10	60	180	250	180	10	700	11.8%
DIO	-	-	-	-	~	~	~	-	-	~	0.1%
Land Command	-	-	-	-	~	20	70	110	~	210	3.5%
Air Command	-	-	-	~	~	20	50	90	~	160	2.8%

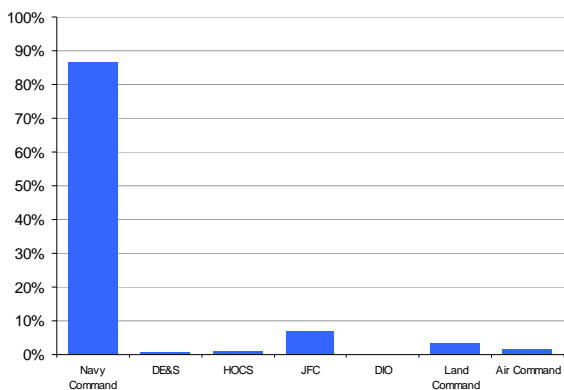
Ratings

TLB								Total	% of Total Trained Strength
	OR9	OR8	OR7	OR6	OR4	OR3	OR2		
Total	790	520	2,950	3,580	5,640	650	9,880	24,000	100.0%
Navy Command	630	420	2,270	2,910	4,870	520	9,160	20,790	86.6%
DE&S	50	20	70	10	~	-	~	160	0.7%
HOCS	20	~	70	40	40	-	20	200	0.8%
JFC	60	50	300	300	460	110	430	1,700	7.1%
DIO	-	-	-	-	~	-	-	~	0.0%
Land Command	20	~	120	200	190	20	250	810	3.4%
Air Command	20	20	110	110	70	-	20	340	1.4%

Trained* Regular Royal Navy and Royal Marine Officer strength by Top Level Budget



Trained* Regular Royal Navy and Royal Marine Ratings strength by Top Level Budget



* The Trained Strength shown in this table does not include the Transfer Trainee Strength, hence the slightly lower figures.

7a Trained Regular Royal Navy and Royal Marines Length of Service by Rank

Royal Navy Officers

Rank		Average LOS on Promotion	Current Average LOS	Average LOS on Exit			
				Overall	VO	TX	OW
OF7+	Admiral	33.1	33.6	37.0	N/A	37.0	N/A
OF6	Commodore	29.0	30.6	34.5	33.5	35.9	N/A
OF5	Captain	26.5	29.1	33.2	32.7	34.1	36.9
OF4	Commander	19.5	23.4	25.7	24.4	27.9	23.3
OF3	Lt Commander	12.4	16.4	20.3	19.4	21.6	19.8
OF2	Lieutenant	4.6	10.7	12.6	12.8	13.7	8.7
OF1	Sub-Lieutenant	2.0	7.6	4.8	4.8	N/A	N/A
OFD	Midshipman	N/A	N/A	N/A	N/A	N/A	N/A
Overall		15.6	16.1	20.4	19.5	22.9	16.3

Royal Marine Officers

Rank		Average LOS on Promotion	Current Average LOS	Average LOS on Exit			
				Overall	VO	TX	OW
OF7+	Major General and Above	31.5	32.5	34.8	N/A	34.8	N/A
OF6	Brigadier	27.6	30.0	28.6	22.5	34.7	N/A
OF5	Colonel	24.9	27.0	23.4	23.4	N/A	N/A
OF4	Lt Colonel	17.7	21.5	24.9	19.9	23.4	28.8
OF3	Major	14.3	14.7	19.1	17.4	16.4	23.3
OF2	Captain	3.8	10.6	10.6	10.4	10.3	11.3
OF1	Lieutenant	2.8	12.5	N/A	N/A	N/A	N/A
Overall		12.0	15.1	16.2	14.2	18.9	16.7

Royal Navy Ratings

Rank		Average LOS on Promotion	Current Average LOS	Average LOS on Exit				
				Overall	VO	TX	OW	PTO
OR-9	Warrant Officer 1st Class	26.4	28.5	31.0	29.1	32.8	30.8	25.9
OR-8	Warrant Officer 2nd Class	21.4	25.1	26.0	26.1	26.4	23.2	22.5
OR-7	Chief Petty Officer	18.6	20.6	22.7	21.1	25.3	24.3	15.4
OR-6	Petty Officer	12.2	16.1	19.7	18.1	23.3	18.6	14.4
OR-4	Leading Hand	6.6	10.4	12.8	11.1	20.9	12.1	7.2
OR-2	Able Rating	N/A	4.5	6.0	6.0	11.5	5.4	4.7
Overall		12.0	11.5	14.5	12.3	23.9	10.4	13.7

Royal Marine Ratings

Rank		Average LOS on Promotion	Current Average LOS	Average LOS on Exit				
				Overall	VO	TX	OW	PTO
OR-9	Warrant Officer 1st Class	23.3	27.3	28.9	28.4	29.8	N/A	24.7
OR-8	Warrant Officer 2nd Class	21.1	23.9	23.7	23.7	26.8	20.2	21.2
OR-7	Colour Sergeant	16.6	19.9	23.5	24.5	26.3	21.3	16.8
OR-6	Sergeant	12.9	14.8	19.7	21.6	21.3	17.8	15.0
OR-4	Corporal	7.8	10.2	13.6	10.8	21.8	14.3	6.5
OR-3	Lance Corporal	N/A	6.3	7.2	N/A	N/A	7.2	N/A
OR-2	Marine	N/A	4.5	6.9	6.3	10.1	7.5	3.8
Overall		11.8	8.9	10.8	8.1	18.7	10.3	15.4

Notes

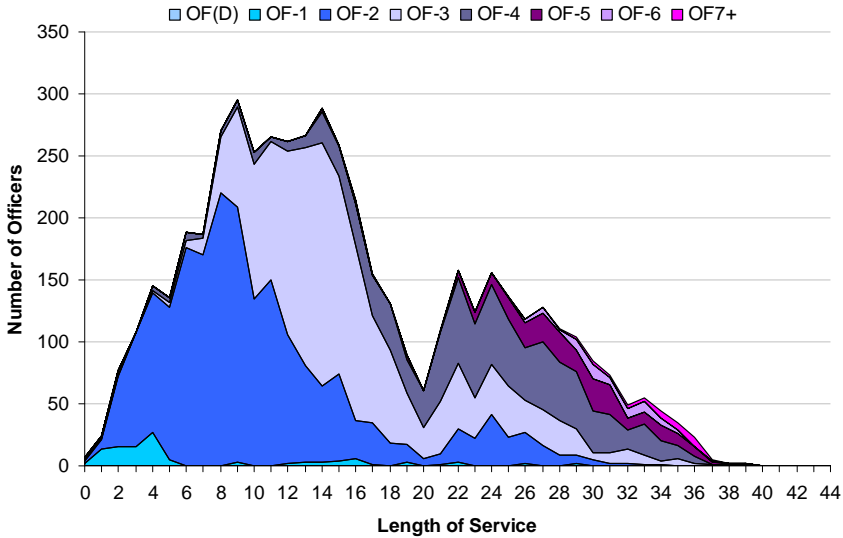
- 1 Flows data are for the last 12 months
- 2 LOS is taken from entry into the RN/RM
- 3 RN Rating and RM Other Rank exits include Promotion to Officer
- 4 Paid rank has been used for the current average LOS, but all other calculations feature substantive rank

Key

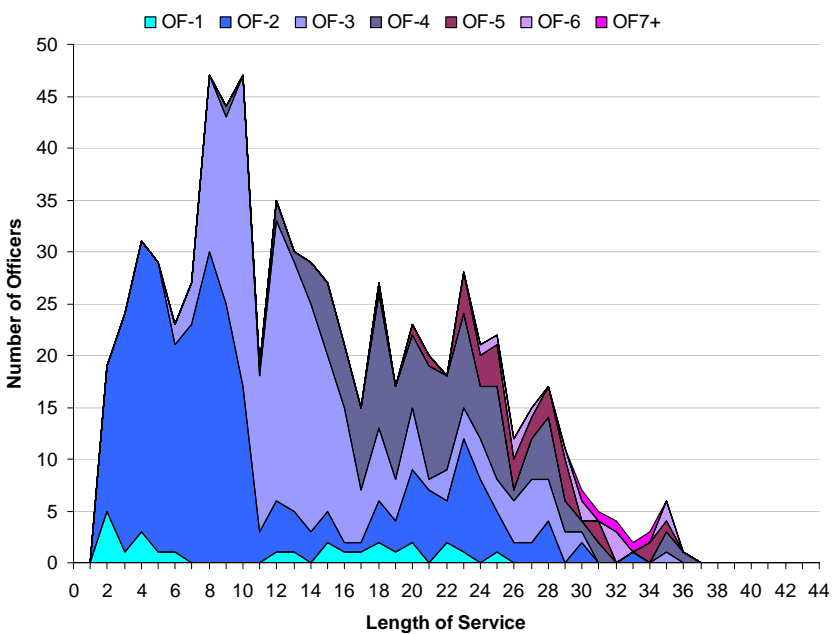
- VO Voluntary Outflow
- TX Time Expiry
- OW Other Wastage
- PTO Promotion to Officer

7b Trained Regular Officer Length of Service by Paid Rank

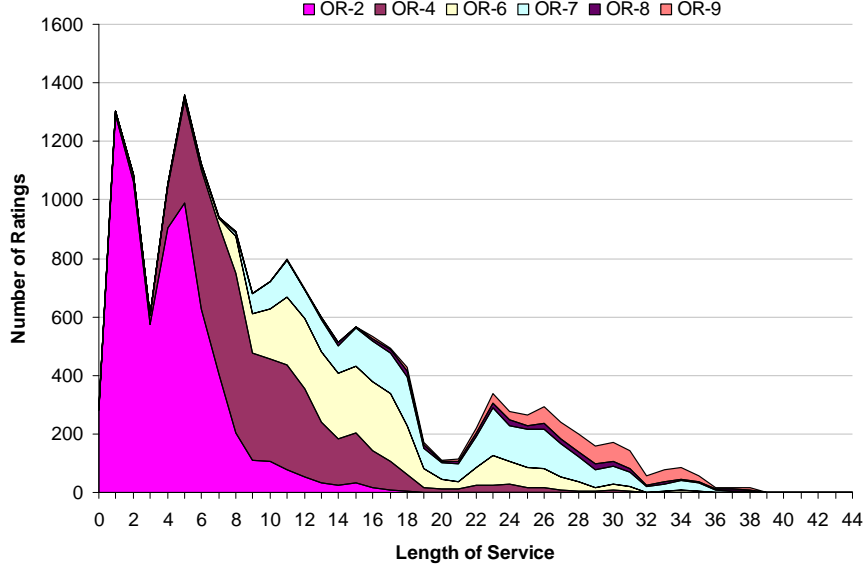
Royal Navy Officer Strength by Rank and Length of Service



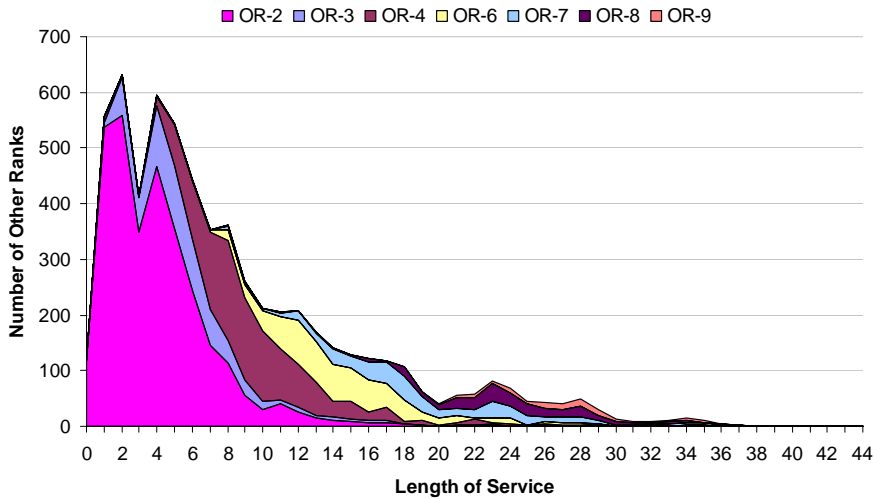
Royal Marine Officer Strength by Rank and Length of service



Royal Navy Rating Strength by Rank and Length of Service



Royal Marine Other Rank Strength by Rank and Length of Service



9a

Trained Regular Royal Navy and Royal Marine Officer Outflow

	2010/2011		2011/2012		2012/2013		2013/2014		12 Mths to 1st Dec 14		Actual Nov 14
	Nos.	%	Nos.	%	Nos.	%	Nos.	%	Nos.	%	
Total Officers	390	6.0%	510	7.9%	540	8.5%	460	7.6%	400	6.7%	30
Royal Navy Officers											
Total	340	6.0%	450	8.0%	460	8.3%	410	7.6%	360	6.8%	30
Voluntary Outflow	170	2.9%	180	3.2%	200	3.7%	230	4.3%	210	4.1%	20
Other Wastage	30	0.5%	40	0.7%	40	0.7%	30	0.6%	30	0.6%	10
Time Expiry	150	2.6%	170	3.0%	150	2.7%	140	2.7%	110	2.2%	10
Redundancy	-	0.0%	60	1.1%	70	1.2%	-	0.1%	-	0.0%	-
Royal Marine Officers											
Total	50	6.2%	60	7.6%	80	10.5%	60	7.4%	40	5.9%	-
Voluntary Outflow	20	2.4%	20	3.0%	30	4.1%	40	5.0%	20	2.7%	-
Other Wastage	-	0.6%	10	1.0%	10	1.7%	10	1.1%	10	1.5%	-
Time Expiry	20	3.2%	30	3.3%	20	2.9%	10	1.3%	10	1.7%	-
Redundancy	-	0.0%	-	0.3%	10	1.8%	-	0.0%	-	0.0%	-
Warfare											
Total	150	5.4%	200	7.3%	190	7.0%	200	7.4%	170	6.5%	10
Voluntary Outflow	70	2.6%	80	3.0%	80	3.0%	100	3.8%	100	3.7%	-
Other Wastage	10	0.4%	20	0.8%	20	0.7%	20	0.8%	20	0.7%	-
Time Expiry	70	2.4%	80	2.8%	70	2.7%	70	2.8%	60	2.1%	-
Redundancy	-	0.0%	20	0.7%	20	0.5%	-	0.0%	-	0.0%	-
Engineer											
Total	130	6.9%	140	7.7%	150	8.6%	140	8.7%	140	8.4%	10
Voluntary Outflow	70	3.7%	60	3.2%	90	5.0%	100	5.7%	80	5.2%	10
Other Wastage	10	0.3%	10	0.6%	10	0.6%	-	0.3%	10	0.4%	-
Time Expiry	50	2.9%	50	2.9%	50	2.8%	40	2.6%	40	2.8%	-
Redundancy	-	0.0%	20	1.0%	-	0.2%	-	0.0%	-	0.0%	-
Logistics											
Total	30	5.6%	60	10.1%	70	12.7%	20	4.8%	20	4.4%	-
Voluntary Outflow	20	3.1%	20	2.7%	10	2.6%	10	2.6%	20	3.0%	-
Other Wastage	-	0.0%	-	0.3%	-	0.7%	-	0.4%	-	0.2%	-
Time Expiry	10	1.6%	20	2.7%	10	1.3%	10	1.6%	10	1.2%	-
Redundancy	-	0.0%	20	4.3%	40	8.0%	-	0.2%	-	0.0%	-
Medical											
Total	20	6.3%	20	8.5%	30	10.3%	20	8.8%	10	5.3%	-
Voluntary Outflow	10	2.1%	10	3.5%	10	3.3%	10	3.1%	10	2.3%	-
Other Wastage	-	1.4%	-	0.7%	-	1.8%	-	1.2%	-	1.5%	-
Time Expiry	10	2.8%	10	4.3%	10	4.0%	10	3.5%	-	1.5%	-
Redundancy	-	0.0%	-	0.0%	-	1.1%	-	1.2%	-	0.0%	-
Dental Services											
Total	-	6.7%	-	5.2%	-	6.9%	-	5.6%	-	5.7%	-
Voluntary Outflow	-	3.3%	-	1.7%	-	1.7%	-	1.9%	-	0.0%	-
Other Wastage	-	0.0%	-	0.0%	-	0.0%	-	0.0%	-	1.9%	-
Time Expiry	-	3.3%	-	3.5%	-	1.7%	-	3.7%	-	3.8%	-
Redundancy	-	0.0%	-	0.0%	-	3.5%	-	0.0%	-	0.0%	-
Medical Services											
Total	10	12.5%	10	13.8%	-	8.3%	-	6.6%	-	8.3%	-
Voluntary Outflow	-	3.1%	-	7.6%	-	5.0%	-	6.6%	-	8.3%	-
Other Wastage	-	1.6%	-	0.0%	-	1.7%	-	0.0%	-	0.0%	-
Time Expiry	-	7.8%	-	6.1%	-	1.7%	-	0.0%	-	0.0%	-
Redundancy	-	0.0%	-	0.0%	-	0.0%	-	0.0%	-	0.0%	-
QARNS											
Total	-	3.8%	10	9.3%	10	10.1%	10	12.6%	-	3.0%	-
Voluntary Outflow	-	1.3%	-	4.0%	10	8.6%	-	3.1%	-	3.0%	-
Other Wastage	-	2.5%	-	1.3%	-	0.0%	-	6.3%	-	0.0%	-
Time Expiry	-	0.0%	-	4.0%	-	1.4%	-	3.1%	-	0.0%	-
Redundancy	-	0.0%	-	0.0%	-	0.0%	-	0.0%	-	0.0%	-
Chaplain											
Total	-	4.6%	10	17.0%	-	5.3%	-	7.0%	-	8.6%	-
Voluntary Outflow	-	0.0%	-	6.8%	-	1.8%	-	3.5%	-	5.2%	-
Other Wastage	-	1.5%	-	0.0%	-	0.0%	-	0.0%	-	0.0%	-
Time Expiry	-	3.1%	10	10.2%	-	3.5%	-	3.5%	-	3.5%	-
Redundancy	-	0.0%	-	0.0%	-	0.0%	-	0.0%	-	0.0%	-
Other / No Spec *											
Total	-	N/A	-	N/A	-	N/A	-	N/A	-	N/A	-
Voluntary Outflow	-	N/A	-	N/A	-	N/A	-	N/A	-	N/A	-
Other Wastage	-	N/A	-	N/A	-	N/A	-	N/A	-	N/A	-
Time Expiry	-	N/A	-	N/A	-	N/A	-	N/A	-	N/A	-
Redundancy	-	N/A	-	N/A	-	N/A	-	N/A	-	N/A	-
RM GS											
Total	50	6.3%	60	7.6%	80	10.4%	50	7.2%	40	6.0%	-
Voluntary Outflow	20	2.5%	20	3.1%	30	4.1%	40	4.8%	20	2.7%	-
Other Wastage	-	0.6%	10	1.0%	10	1.6%	10	1.1%	10	1.5%	-
Time Expiry	20	3.2%	20	3.2%	20	2.9%	10	1.4%	10	1.8%	-
Redundancy	-	0.0%	-	0.3%	10	1.8%	-	0.0%	-	0.0%	-
RM BS											
Total	-	N/A	-	0.0%	-	16.9%	-	17.9%	-	0.0%	-
Voluntary Outflow	-	N/A	-	0.0%	-	8.5%	-	17.9%	-	0.0%	-
Other Wastage	-	N/A	-	0.0%	-	8.5%	-	0.0%	-	0.0%	-
Time Expiry	-	N/A	-	0.0%	-	0.0%	-	0.0%	-	0.0%	-
Redundancy	-	N/A	-	0.0%	-	0.0%	-	0.0%	-	0.0%	-
Career *											
Total	-	N/A	-	N/A	-	N/A	-	N/A	-	N/A	-
Voluntary Outflow	-	N/A	-	N/A	-	N/A	-	N/A	-	N/A	-
Other Wastage	-	N/A	-	N/A	-	N/A	-	N/A	-	N/A	-
Time Expiry	-	N/A	-	N/A	-	N/A	-	N/A	-	N/A	-
Redundancy	-	N/A	-	N/A	-	N/A	-	N/A	-	N/A	-

* No outflow as a percentage of strength is shown for Other/No Spec or Careers

Dec-14 Edition.

9b

Trained Regular Royal Navy and Royal Marine Rating Outflow

	2010/2011		2011/2012		2012/2013		2013/2014		12 Mths to 1st Dec 14		Actual Nov 14
	Nos.	%	Nos.	%	Nos.	%	Nos.	%	Nos.	%	
Total Ratings	2,450	8.5%	3,360	12.0%	3,290	12.7%	2,760	11.2%	2,580	10.6%	200
Royal Navy Ratings											
Total	1,980	8.9%	2,670	12.4%	2,390	12.1%	2,280	12.4%	2,060	11.5%	140
Voluntary Outflow	900	4.0%	870	4.0%	1,060	5.3%	1,190	6.4%	1,160	6.5%	70
Other Wastage	510	2.3%	640	3.0%	410	2.1%	380	2.1%	380	2.1%	40
Time Expiry	490	2.2%	510	2.4%	530	2.7%	610	3.3%	440	2.5%	20
Promotion to Officer	90	0.4%	50	0.2%	50	0.2%	70	0.4%	70	0.4%	-
Redundancy	-	0.0%	590	2.8%	350	1.8%	40	0.2%	-	0.0%	-
Royal Marine Ratings											
Total	460	7.2%	690	10.6%	900	14.6%	480	7.7%	520	8.3%	60
Voluntary Outflow	240	3.8%	380	5.8%	560	9.0%	240	3.8%	290	4.6%	30
Other Wastage	100	1.6%	180	2.8%	190	3.1%	130	2.1%	110	1.8%	20
Time Expiry	100	1.6%	120	1.8%	140	2.3%	80	1.4%	90	1.5%	10
Promotion to Officer	20	0.2%	20	0.3%	10	0.2%	20	0.4%	20	0.4%	-
Redundancy	-	0.0%	-	0.0%	-	0.0%	-	0.0%	-	0.0%	-
XR											
Total	550	9.8%	660	12.2%	710	14.5%	550	12.1%	510	11.4%	30
Voluntary Outflow	270	4.7%	260	4.9%	320	6.6%	300	6.6%	290	6.6%	20
Other Wastage	140	2.5%	170	3.2%	110	2.2%	110	2.5%	110	2.4%	10
Time Expiry	130	2.3%	130	2.4%	130	2.7%	130	2.8%	100	2.2%	10
Promotion to Officer	10	0.2%	-	0.1%	10	0.2%	10	0.2%	10	0.2%	-
Redundancy	-	0.0%	90	1.6%	140	2.7%	-	0.1%	-	0.0%	-
XSM											
Total	80	8.6%	80	9.0%	80	9.4%	80	9.8%	80	9.7%	-
Voluntary Outflow	30	3.7%	30	3.7%	30	4.0%	30	4.0%	40	4.7%	-
Other Wastage	20	1.9%	20	2.0%	20	2.2%	20	2.1%	20	2.3%	-
Time Expiry	20	2.5%	30	3.3%	30	3.2%	20	3.2%	20	2.3%	-
Promotion to Officer	-	0.0%	-	0.0%	-	0.0%	-	0.0%	-	0.0%	-
Redundancy	-	0.0%	-	0.0%	-	0.0%	-	0.0%	-	0.0%	-
XAV											
Total	60	7.4%	80	9.3%	100	13.0%	80	11.5%	60	8.8%	-
Voluntary Outflow	30	3.8%	30	3.5%	20	2.6%	40	5.0%	30	4.4%	-
Other Wastage	10	1.6%	10	1.3%	10	1.8%	10	1.4%	20	2.3%	-
Time Expiry	20	1.8%	10	1.6%	20	2.0%	20	2.7%	10	1.7%	-
Promotion to Officer	-	0.0%	-	0.0%	-	0.5%	-	0.4%	-	0.4%	-
Redundancy	-	0.0%	20	2.8%	50	6.0%	10	2.0%	-	0.0%	-
EGS											
Total	480	9.2%	760	15.6%	600	14.1%	680	17.4%	580	15.7%	40
Voluntary Outflow	220	4.2%	240	5.0%	310	7.3%	430	10.9%	370	10.0%	30
Other Wastage	130	2.6%	180	3.7%	80	1.9%	90	2.2%	90	2.3%	10
Time Expiry	100	1.9%	140	2.8%	120	2.7%	150	3.9%	110	3.0%	-
Promotion to Officer	30	0.5%	20	0.4%	10	0.3%	20	0.4%	20	0.5%	-
Redundancy	-	0.0%	180	3.8%	80	2.0%	-	0.0%	-	0.0%	-
ESM											
Total	170	8.0%	160	7.4%	200	9.5%	240	11.8%	260	13.3%	20
Voluntary Outflow	50	2.4%	60	2.7%	110	5.2%	120	5.9%	140	7.2%	10
Other Wastage	50	2.5%	40	2.1%	30	1.5%	50	2.3%	40	2.2%	-
Time Expiry	50	2.4%	50	2.4%	60	2.7%	70	3.4%	70	3.7%	-
Promotion to Officer	10	0.6%	-	0.2%	-	0.2%	-	0.2%	-	0.2%	-
Redundancy	-	0.0%	-	0.0%	-	0.0%	-	0.0%	-	0.0%	-
EAE											
Total	270	7.6%	460	13.1%	240	7.7%	280	9.0%	270	9.0%	20
Voluntary Outflow	120	3.5%	100	2.7%	110	3.3%	120	4.0%	150	5.1%	10
Other Wastage	50	1.4%	100	2.7%	50	1.6%	50	1.5%	40	1.3%	-
Time Expiry	70	2.1%	60	1.7%	70	2.2%	80	2.8%	60	1.9%	-
Promotion to Officer	20	0.5%	10	0.4%	10	0.2%	20	0.7%	20	0.7%	-
Redundancy	-	0.0%	200	5.6%	10	0.3%	-	0.0%	-	0.0%	-

Dec-14 Edition.

Trained Regular Royal Navy and Royal Marines Rating Outflow (continued)

		2010/2011		2011/2012		2012/2013		2013/2014		12 Mths to 1st Dec 14		Actual Nov 14
		Nos.	%	Nos.	%	Nos.	%	Nos.	%	Nos.	%	
LOGS	Total	290	8.9%	380	12.4%	340	12.2%	290	11.2%	230	9.0%	20
	Voluntary Outflow	130	4.1%	110	3.7%	110	3.9%	110	4.3%	110	4.3%	10
	Other Wastage	70	2.2%	90	3.0%	80	2.9%	50	1.8%	50	2.1%	10
	Time Expiry	80	2.4%	80	2.4%	90	3.3%	110	4.2%	60	2.4%	-
	Promotion to Officer	10	0.2%	10	0.2%	-	0.1%	10	0.3%	-	0.2%	-
	Redundancy	-	0.0%	100	3.1%	60	2.1%	20	0.7%	-	0.0%	-
MED	Total	100	10.4%	100	10.6%	120	12.5%	90	10.1%	80	8.6%	10
	Voluntary Outflow	50	4.8%	40	4.2%	50	5.1%	40	4.8%	30	3.6%	-
	Other Wastage	30	3.2%	30	3.3%	20	2.1%	20	2.2%	20	2.5%	-
	Time Expiry	20	1.9%	20	1.9%	20	2.5%	20	2.4%	20	2.0%	-
	Promotion to Officer	10	0.6%	10	0.6%	10	1.0%	-	0.5%	-	0.5%	-
	Redundancy	-	0.0%	10	0.6%	20	1.8%	-	0.2%	-	0.0%	-
Other / No Spec *	Total	-	N/A	-	N/A	-	N/A	-	N/A	-	N/A	-
	Voluntary Outflow	-	N/A	-	N/A	-	N/A	-	N/A	-	N/A	-
	Other Wastage	-	N/A	-	N/A	-	N/A	-	N/A	-	N/A	-
	Time Expiry	-	N/A	-	N/A	-	N/A	-	N/A	-	N/A	-
	Promotion to Officer	-	N/A	-	N/A	-	N/A	-	N/A	-	N/A	-
	Redundancy	-	N/A	-	N/A	-	N/A	-	N/A	-	N/A	-
RM GS	Total	430	7.2%	680	11.1%	870	15.2%	440	7.7%	480	8.3%	50
	Voluntary Outflow	220	3.7%	370	6.1%	540	9.5%	220	3.9%	260	4.6%	30
	Other Wastage	100	1.6%	180	2.9%	180	3.2%	120	2.2%	110	1.9%	20
	Time Expiry	100	1.6%	110	1.8%	140	2.4%	70	1.3%	80	1.4%	10
	Promotion to Officer	20	0.3%	20	0.3%	10	0.1%	20	0.4%	20	0.3%	-
	Redundancy	-	0.0%	-	0.0%	-	0.0%	-	0.0%	-	0.0%	-
RM BS	Total	20	6.7%	10	3.9%	20	5.3%	30	7.6%	30	8.2%	-
	Voluntary Outflow	10	3.3%	10	1.8%	10	1.8%	10	2.6%	20	5.6%	-
	Other Wastage	-	1.5%	-	0.3%	-	1.5%	-	1.2%	-	0.0%	-
	Time Expiry	10	1.8%	10	1.8%	-	1.5%	10	3.2%	10	2.1%	-
	Promotion to Officer	-	0.0%	-	0.0%	-	0.6%	-	0.6%	-	0.6%	-
	Redundancy	-	0.0%	-	0.0%	-	0.0%	-	0.0%	-	0.0%	-
Career *	Total	-	N/A	-	N/A	-	N/A	-	N/A	-	N/A	-
	Voluntary Outflow	-	N/A	-	N/A	-	N/A	-	N/A	-	N/A	-
	Other Wastage	-	N/A	-	N/A	-	N/A	-	N/A	-	N/A	-
	Time Expiry	-	N/A	-	N/A	-	N/A	-	N/A	-	N/A	-
	Promotion to Officer	-	N/A	-	N/A	-	N/A	-	N/A	-	N/A	-
	Redundancy	-	N/A	-	N/A	-	N/A	-	N/A	-	N/A	-

* No outflow as a percentage of strength is shown for Other/No Spec or Careers

Dec-14 Edition.

Trained Regular Royal Navy and Royal Marine Officer Voluntary Outflow Exits by Paid Rank

	2010/2011		2011/2012		2012/2013		2013/2014		12 Months to 1st Dec 14		Actual Nov 14
	Nos.	%	Nos.	%	Nos.	%	Nos.	%	Nos.	%	
Total Officers	190	2.9%	200	3.1%	240	3.7%	260	4.3%	230	3.9%	20
Royal Navy Officers											
Total	170	2.9%	180	3.2%	200	3.7%	230	4.3%	210	4.1%	20
OF9	-	-	-	-	-	-	-	-	-	-	-
OF8	-	-	-	-	-	-	-	-	-	-	-
OF7	-	-	-	-	-	-	-	-	-	-	-
OF6	~	6.9%	10	10.1%	10	10.2%	10	13.9%	10	10.9%	-
OF5	10	4.7%	10	5.5%	10	5.3%	20	6.4%	20	9.5%	~
OF4	40	3.4%	30	3.4%	40	4.3%	40	4.8%	40	4.3%	~
OF3	60	3.0%	70	3.7%	70	3.9%	80	4.3%	60	3.5%	10
OF2	60	2.4%	50	2.3%	70	3.1%	80	3.7%	80	3.8%	~
OF1	-	-	~	1.1%	-	-	-	-	~	1.2%	-
Royal Marine Officers											
Total	20	2.4%	20	3.0%	30	4.1%	40	5.0%	20	2.7%	~
OF9	-	-	-	-	-	-	-	-	-	-	-
OF8	-	-	-	-	-	-	-	-	-	-	-
OF7	-	-	-	-	-	-	-	-	-	-	-
OF6	-	-	-	-	~	27.3%	-	-	~	7.8%	-
OF5	~	5.5%	-	-	-	-	~	5.8%	~	9.5%	-
OF4	~	3.3%	~	4.1%	10	5.1%	10	7.0%	~	0.8%	-
OF3	~	1.2%	10	3.3%	10	3.9%	10	4.7%	~	1.3%	-
OF2	10	3.1%	10	3.3%	10	4.3%	20	5.2%	10	4.1%	~
OF1	-	-	-	-	-	-	-	-	-	-	-

Dec-14 Edition.

10b Trained Regular Royal Navy and Royal Marine Rating Voluntary Outflow Exits by Paid Rank

	2010/2011		2011/2012		2012/2013		2013/2014		12 Months to 1st Dec 14		Actual
	Nos.	%	Nos.	%	Nos.	%	Nos.	%	Nos.	%	Nov 14
Total Ratings	1,140	4.0%	1,250	4.5%	1,610	6.2%	1,420	5.8%	1,450	6.0%	110
XR											
Total	270	4.7%	260	4.9%	320	6.6%	300	6.6%	290	6.6%	20
OR9	10	3.8%	10	4.8%	10	8.8%	~	3.3%	10	4.0%	-
OR8	-	-	~	10.6%	~	13.4%	~	9.3%	~	12.6%	-
OR7	20	3.2%	30	4.6%	40	6.4%	20	4.2%	20	3.2%	-
OR6	30	2.8%	20	1.8%	40	4.4%	30	3.5%	30	3.4%	~
OR4	40	3.4%	30	2.2%	60	4.4%	60	5.2%	60	4.9%	~
OR2	170	6.7%	180	7.7%	180	8.7%	180	9.8%	180	10.3%	10
XSM											
Total	30	3.7%	30	3.7%	30	4.0%	30	4.0%	40	4.7%	~
OR9	~	4.6%	~	5.0%	~	11.5%	~	3.1%	~	2.9%	-
OR8	-	-	-	-	-	-	-	-	-	-	-
OR7	~	2.8%	~	2.9%	~	2.9%	10	7.2%	10	6.3%	-
OR6	~	3.3%	~	3.3%	~	1.6%	~	3.4%	~	1.8%	-
OR4	~	2.1%	~	2.7%	~	2.3%	~	0.6%	~	1.8%	-
OR2	20	4.8%	20	4.4%	20	5.2%	20	4.9%	20	6.6%	~
XAV											
Total	30	3.8%	30	3.5%	20	2.6%	40	5.0%	30	4.4%	~
OR9	~	8.1%	~	2.8%	~	3.1%	~	13.7%	~	14.1%	-
OR8	-	-	-	-	-	-	-	-	-	-	-
OR7	~	5.5%	10	7.7%	~	5.7%	~	6.2%	10	11.2%	-
OR6	10	5.5%	~	3.1%	~	1.9%	10	5.3%	~	3.4%	-
OR4	~	1.5%	10	2.4%	~	1.7%	10	3.7%	~	1.9%	-
OR3	-	-	-	-	-	-	-	-	-	-	-
OR2	10	3.6%	10	3.5%	10	2.9%	10	4.5%	10	3.8%	-
EGS											
Total	220	4.2%	240	5.0%	310	7.3%	430	10.9%	370	10.0%	30
OR9	10	4.9%	10	5.6%	20	12.3%	10	6.7%	10	6.6%	~
OR8	10	4.7%	20	6.9%	30	12.8%	40	15.4%	20	17.0%	~
OR7	40	3.4%	40	3.9%	50	5.5%	70	9.0%	60	8.7%	10
OR6	30	2.8%	40	4.3%	50	7.0%	70	11.0%	60	11.4%	10
OR4	40	3.9%	20	2.7%	50	5.6%	80	9.3%	70	8.8%	10
OR2	100	5.5%	110	6.9%	120	8.0%	170	12.7%	140	10.5%	10
ESM											
Total	50	2.4%	60	2.7%	110	5.2%	120	5.9%	140	7.2%	10
OR9	~	1.4%	~	5.9%	~	4.8%	~	1.7%	~	1.5%	-
OR8	~	2.2%	~	1.6%	10	4.0%	~	1.2%	10	4.5%	~
OR7	20	2.9%	10	2.5%	30	6.0%	40	7.9%	40	9.6%	~
OR6	20	3.9%	20	4.1%	30	9.0%	30	11.9%	30	12.0%	~
OR4	~	1.6%	10	1.8%	20	5.3%	20	5.8%	40	9.7%	~
OR2	10	1.6%	20	2.4%	20	2.9%	20	3.8%	30	3.8%	~
EAE											
Total	120	3.5%	100	2.7%	110	3.3%	120	4.0%	150	5.1%	10
OR9	~	4.8%	~	7.0%	~	5.5%	~	7.2%	~	7.4%	-
OR8	~	5.2%	~	5.9%	~	2.0%	~	5.4%	~	2.3%	-
OR7	30	5.2%	20	3.2%	20	3.5%	20	3.9%	20	4.8%	~
OR6	20	2.5%	20	2.1%	20	3.0%	30	4.0%	30	4.7%	~
OR4	~	0.5%	10	1.3%	20	3.1%	10	1.7%	30	3.3%	-
OR2	60	4.6%	50	3.3%	40	3.6%	60	5.6%	70	6.6%	~

	2010/2011		2011/2012		2012/2013		2013/2014		12 Months to 1st Dec 14		Actual
	Nos.	%	Nos.	%	Nos.	%	Nos.	%	Nos.	%	Nov 14
LOGS											
Total	130	4.1%	110	3.7%	110	3.9%	110	4.3%	110	4.5%	10
OR9	~	5.2%	~	5.6%	~	6.5%	~	8.7%	~	6.8%	-
OR8	-	-	-	-	-	-	-	-	-	-	-
OR7	10	2.3%	10	5.6%	10	4.1%	10	5.5%	10	4.1%	-
OR6	10	2.1%	10	2.6%	10	2.1%	10	3.5%	10	2.6%	~
OR4	20	2.8%	20	2.4%	30	3.4%	20	3.2%	30	4.5%	~
OR2	90	5.8%	60	4.4%	60	4.5%	60	5.0%	60	5.1%	~
Med											
Total	50	4.8%	40	4.2%	50	5.1%	40	4.7%	30	3.6%	~
OR9	~	14.3%	~	11.4%	~	11.2%	~	11.1%	~	3.6%	-
OR8	-	-	-	-	-	-	-	-	-	-	-
OR7	~	1.7%	~	2.4%	~	3.3%	~	4.3%	~	4.3%	-
OR6	10	3.7%	~	1.6%	~	2.8%	~	1.7%	~	2.3%	~
OR4	10	2.7%	20	5.0%	20	5.6%	20	7.2%	10	4.6%	-
OR3	-	-	~	11.0%	-	-	-	-	-	-	-
OR2	30	8.1%	20	4.8%	20	6.4%	10	4.1%	10	3.3%	~
RM GS											
Total	220	3.7%	370	6.1%	540	9.5%	220	3.9%	260	4.6%	30
OR9	~	4.1%	~	5.3%	10	10.2%	~	1.2%	~	3.5%	~
OR8	~	0.9%	10	3.5%	10	4.0%	10	3.9%	~	0.9%	~
OR7	~	1.3%	10	2.1%	20	3.9%	10	1.9%	10	2.1%	-
OR6	10	1.8%	10	1.9%	30	5.3%	10	1.1%	~	0.7%	~
OR4	50	4.1%	90	7.4%	140	12.7%	30	2.5%	30	2.5%	~
OR3	20	3.5%	30	4.8%	20	3.0%	20	2.6%	20	2.7%	~
OR2	130	4.5%	220	7.1%	330	11.8%	160	5.6%	200	7.2%	20
RM Band											
Total	10	3.3%	10	1.8%	10	1.8%	10	2.6%	20	5.6%	~
OR9	-	-	-	-	-	-	-	-	-	-	-
OR8	~	9.5%	-	-	-	-	-	-	~	8.1%	-
OR7	~	3.4%	-	-	-	-	-	-	~	3.3%	-
OR6	~	2.0%	-	-	-	-	~	3.9%	~	4.2%	~
OR4	~	1.6%	~	1.7%	-	-	~	1.7%	~	1.6%	-
OR3	-	-	-	-	-	-	-	-	-	-	-
OR2	10	4.1%	~	2.8%	10	3.3%	10	3.3%	10	7.6%	~

* No outflow as a percentage of strength is shown for Other/No Spec or Careers
Dec-14 Edition.

11a Trained Regular Royal Navy and Royal Marine Officer Promotions to Substantive Rank

	2010/2011	2011/2012	2012/2013	2013/2014	12 Months to 1st Dec 14
Total Officers	500	480	490	510	540
OF7 and Above	10	20	10	10	10
OF6	20	20	20	20	20
OF5	40	40	30	50	60
OF4	110	100	100	90	120
OF3	240	180	210	220	240
OF2	80	110	120	120	90
OF1	N/A	N/A	N/A	N/A	N/A

11b Trained Regular Royal Navy and Royal Marine Rating and Other Rank Promotions to Substantive Rank

	2010/2011	2011/2012	2012/2013	2013/2014	12 Months to 1st Dec 14
Total Ratings	2,540	1,880	1,530	2,660	2,340
OR9	90	70	30	110	100
OR8	120	110	30	150	120
OR7	460	360	300	420	420
OR6	700	550	410	740	650
OR4	1,150	800	760	1,220	1,050
OR3	20	-	-	-	-

12a

Gains to the Trained Regular Royal Navy and Royal Marines Officer Strength from Untrained by Branch

		2010/2011	2011/2012	2012/2013	2013/2014	12 Months to 1st Dec 14
Royal Navy	Officers					
	Total	330	290	290	240	270
Royal Marines	Officers	-	-			
	Total	70	40	50	50	50
	Warfare	180	160	140	110	110
	Engineer	90	70	100	80	90
	Logistics	40	30	20	20	40
	Medical	20	20	10	20	20
	Medical Services	~	~	~	~	~
	Dental	~	~	~	~	~
	QARNNS	~	~	~	~	10
	Chaplain	~	~	~	~	~
	Other	-	-	-	-	-
	RM GS	70	40	50	50	50
	RM BS	~	-	~	-	-

		Dec-13	Jan-14	Feb-14	Mar-14	Apr-14	May-14	Jun-14	Jul-14	Aug-14	Sep-14	Oct-14	Nov-14
Royal Navy	Officers												
	Total	20	10	20	30	~	50	40	10	~	30	40	20
Royal Marines	Officers												
	Total	30	-	20	-	-	-	-	-	-	-	-	-
	Warfare	10	~	10	~	-	30	20	~	~	~	20	20
	Engineer	10	10	10	~	~	20	10	~	-	10	20	~
	Logistics	-	-	~	10	~	~	10	~	-	10	-	-
	Medical	-	-	-	20	-	-	-	~	-	-	-	-
	Medical Services	-	-	-	-	-	~	-	-	-	-	~	-
	Dental	-	-	-	-	-	-	-	-	-	-	-	-
	QARNNS	-	~	-	-	-	~	-	~	-	-	-	-
	Chaplain	-	-	~	-	-	-	-	-	-	-	-	-
	Other	-	-	-	-	-	-	-	-	-	-	-	-
	RM GS	30	-	20	-	-	-	-	-	-	-	-	-
	RM BS	-	-	-	-	-	-	-	-	-	-	-	-

Dec-14 Edition.

Gains to the Trained Regular Royal Navy and Royal Marine Rating Strength from Untrained by Branch and Specialisation

		2010/2011	2011/2012	2012/2013	2013/2014	12 Months to 1st Dec 14
Royal Navy	Ratings					
	Total	1,690	910	980	1,230	1,430
Royal Marines	Other Ranks					
	Total	730	530	540	650	640
XR		390	240	270	310	390
	WS	150	70	120	120	140
	WS(AWT)	-	-	-	-	-
	WS(AWW)	-	-	-	-	-
	WS(EW)	-	-	-	-	-
	WS(UW)	-	-	-	-	-
	CIS	60	40	40	40	60
	HM	10	10	20	20	20
	HM(H)	-	-	-	-	-
	HM(M)	-	-	-	-	-
	Mine Warfare	30	20	40	50	50
	Diver	20	20	20	30	30
	Seaman Specialist	100	60	20	40	70
	Weapons Analyst	-	-	-	-	-
	PT	-	-	-	-	-
	RN Police	-	-	-	-	-
	CT	20	10	10	10	10
	Unspecified	-	-	-	-	-
XSM		60	40	40	50	60
	Coxswain (SM)	-	-	-	-	-
	WS(SSM)	20	20	20	30	30
	WS(TSM)	20	-	10	10	10
	CISSM	20	20	10	10	20
	Unspecified	-	-	-	-	-
XAV		80	20	20	30	40
	Aircrewman	-	-	-	-	-
	NA(AC)	20	10	10	-	-
	NA(AH)	60	20	10	30	40
	NA(Phot)	-	-	-	-	-
	RM Aircrewmn	-	-	-	-	-
	Unspecified	-	-	-	-	-
EGS		360	160	210	310	330
	MEM	-	-	-	-	-
	WEM	-	-	-	-	-
	ET(ME)	220	90	150	200	170
	ET(WE)	130	70	60	120	150
	ETS	-	-	-	-	-
	Unspecified	-	-	-	-	-
ESM		160	130	130	150	180
	MEM	-	-	-	-	-
	WEM	-	-	-	-	-
	ET(MESM)	100	60	90	90	90
	ET(WESM)	60	70	40	70	90
EAE		340	190	100	190	230
	AEA	-	-	-	-	-
	AEM	-	-	-	-	-
	AET	320	180	100	180	220
	NA(SE)	20	-	-	10	10
	Unspecified	-	-	-	-	-
LOGS		230	90	140	120	150
	Caterer	-	-	-	-	-
	Chef	50	40	40	50	80
	Steward	60	10	20	30	20
	Supply Chain	40	10	30	30	40
	Writer	80	30	50	20	20
	Family Service	-	-	-	-	-
	Unspecified	-	-	-	-	-
MED		70	50	60	60	60
	Dental Hyg	-	-	-	-	-
	Dental SA	10	-	-	-	-
	Med Asst	50	40	40	50	40
	NN	10	10	10	-	10
	Med Techn	-	-	-	-	-
	RM Med Asst	-	-	-	-	-
	Unspecified	-	-	-	-	-
RM GS		700	510	520	630	610
RM Band		30	20	20	20	30
	Band	20	20	20	20	20
	Bugler	10	-	-	10	10

12b Gains to the Trained Regular Royal Navy and Royal Marines Rating Strength from Untrained by Branch and Specialisation (Cont)

		Dec-13	Jan-14	Feb-14	Mar-14	Apr-14	May-14	Jun-14	Jul-14	Aug-14	Sep-14	Oct-14	Nov-14
Royal Navy	Ratings												
	Total	60	160	70	100	100	140	190	190	40	150	130	100
Royal Marines	Other Ranks												
	Total	90	20	50	60	-	40	70	100	-	60	100	50
XR		-	30	10	50	10	50	30	70	20	40	40	40
	WS	-	20	10	10	10	10	20	20	-	20	30	-
	WS(AWT)	-	-	-	-	-	-	-	-	-	-	-	-
	WS(EW)	-	-	-	-	-	-	-	-	-	-	-	-
	WS(UW)	-	-	-	-	-	-	-	-	-	-	-	-
	CIS	-	10	-	-	-	-	20	-	20	-	-	20
	HM	-	-	-	-	-	-	-	10	-	-	-	-
	HM(H)	-	-	-	-	-	-	-	-	-	-	-	-
	HM(M)	-	-	-	-	-	-	-	-	-	-	-	-
	Mine Warfare	-	-	-	10	-	10	-	10	-	-	-	10
	Diver	-	-	-	10	-	-	-	10	-	-	-	-
	Seaman Specialist	-	-	-	20	-	20	-	10	-	20	10	-
	Weapons Analyst	-	-	-	-	-	-	-	-	-	-	-	-
	PT	-	-	-	-	-	-	-	-	-	-	-	-
	RN Police	-	-	-	-	-	-	-	-	-	-	-	-
	CT	-	-	-	-	-	-	-	10	-	-	-	-
	Unspecified	-	-	-	-	-	-	-	-	-	-	-	-
XSM		-	-	-	10	10	-	20	10	-	-	10	-
	Coxswain (SM)	-	-	-	-	-	-	-	-	-	-	-	-
	WS(SSM)	-	-	-	10	-	-	10	-	-	-	10	-
	WS(TSM)	-	-	-	-	-	-	-	10	-	-	-	-
	CISSM	-	-	-	-	-	-	10	-	-	-	-	-
	Unspecified	-	-	-	-	-	-	-	-	-	-	-	-
XAV		-	-	-	-	20	-	20	-	-	-	-	-
	Aircrewman	-	-	-	-	-	-	-	-	-	-	-	-
	NA(AC)	-	-	-	-	-	-	-	-	-	-	-	-
	NA(AH)	-	-	-	-	20	-	20	-	-	-	-	-
	NA(Phot)	-	-	-	-	-	-	-	-	-	-	-	-
	RM Aircrewmen	-	-	-	-	-	-	-	-	-	-	-	-
	Unspecified	-	-	-	-	-	-	-	-	-	-	-	-
EGS		-	50	20	20	10	60	30	50	20	40	30	10
	MEM	-	-	-	-	-	-	-	-	-	-	-	-
	WEM	-	-	-	-	-	-	-	-	-	-	-	-
	ET(ME)	-	20	20	-	-	40	20	40	-	20	-	-
	ET(WE)	-	30	-	20	10	20	-	10	10	10	30	10
	ETS	-	-	-	-	-	-	-	-	-	-	-	-
	Unspecified	-	-	-	-	-	-	-	-	-	-	-	-
ESM		20	30	10	-	20	-	50	-	-	30	-	10
	MEM	-	-	-	-	-	-	-	-	-	-	-	-
	WEM	-	-	-	-	-	-	-	-	-	-	-	-
	ET(MESM)	10	10	-	-	20	-	20	-	-	20	-	-
	ET(WESM)	10	10	10	-	-	-	30	-	-	10	-	10
EAE		40	10	20	10	10	20	20	20	-	20	30	20
	AEA	-	-	-	-	-	-	-	-	-	-	-	-
	AEM	-	-	-	-	-	-	-	-	-	-	-	-
	AET	30	10	20	10	10	20	20	20	-	20	30	20
	NA(SE)	10	-	-	-	-	-	-	-	-	-	-	-
	Unspecified	-	-	-	-	-	-	-	-	-	-	-	-
LOGS		-	20	10	10	20	10	10	20	-	10	10	20
	Caterer	-	-	-	-	-	-	-	-	-	-	-	-
	Chef	-	10	10	-	10	10	10	10	-	-	10	10
	Steward	-	10	-	-	-	-	-	-	-	-	-	-
	Supply Chain	-	-	-	10	-	-	-	10	-	-	10	10
	Writer	-	-	-	-	10	-	-	-	-	10	-	-
	Family Service	-	-	-	-	-	-	-	-	-	-	-	-
	Unspecified	-	-	-	-	-	-	-	-	-	-	-	-
MED		10	10	-	-	-	10	10	10	-	10	-	-
	Dental Hyg	-	-	-	-	-	-	-	-	-	-	-	-
	Dental SA	-	-	-	-	-	-	-	-	-	-	-	-
	Med Asst	10	10	-	-	-	10	10	10	-	-	-	-
	Naval Nurse	-	-	-	-	-	-	-	-	-	10	-	-
	Med Techn	-	-	-	-	-	-	-	-	-	-	-	-
	RM Med Asst	-	-	-	-	-	-	-	-	-	-	-	-
	Unspecified	-	-	-	-	-	-	-	-	-	-	-	-
RM GS		90	20	50	60	-	30	70	100	-	40	100	50
RM Band		-	10	-	-	-	-	-	-	-	20	-	-
	Band	-	-	-	-	-	-	-	-	-	20	-	-
	Bugler	-	10	-	-	-	-	-	-	-	-	-	-

13 Trained Intake to the Regular Royal Navy and Royal Marine Service

	2010/2011	2011/2012	2012/2013	2013/2014	12 Months to 1st Dec 14	Actual Nov 14
Total Officers	10	~	10	~	10	-
Warfare	~	~	~	~	~	-
Engineer	-	-	~	~	~	-
Logistics	-	-	~	-	-	-
Medical	~	-	-	~	-	-
Medical Services	-	~	-	-	-	-
QARNNS	-	-	-	-	~	-
Dental	~	-	-	-	-	-
Chaplain	-	-	-	~	~	-
RM GS	~	~	~	~	~	-
RM Band	-	-	-	-	-	-
No Value	-	-	-	-	-	-
Total Ratings	80	40	60	70	60	10
XR	20	20	20	10	10	~
XSM	~	~	-	-	~	-
XAV	~	~	~	~	~	~
EGS	10	~	~	10	10	~
ESM	~	~	-	-	~	-
EAE	~	-	~	10	~	~
LOGS	10	~	~	~	10	~
MED	~	~	~	~	~	-
QARNNS	-	-	-	-	-	-
RM GS	30	10	20	30	20	~
RM Band	~	-	~	~	~	-
No Value	-	-	-	-	-	-

The figures above show trained intake to the regular strength from Civil Life, from Another Service, from LTA,
To Other Ranks from Officer and To Officer from Other Ranks

Dec-14 Edition.