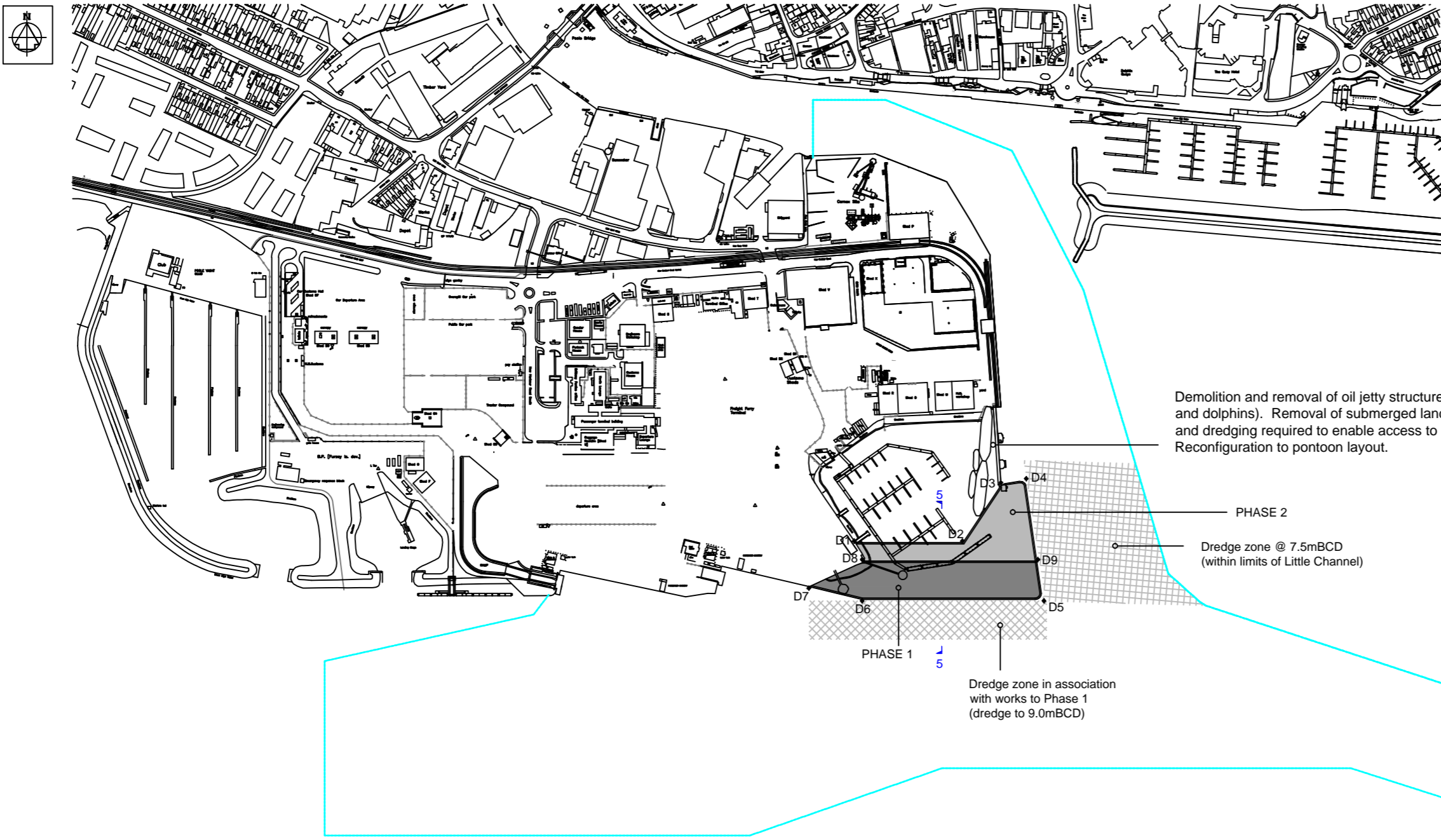
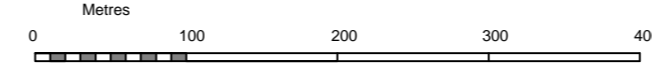


**Layout Plan
Scale 1:5000**



Based upon Ordnance Survey Map with the sanction of the Controller of H.M. Stationery Office



LEGEND

Denotes maintained Channels

Summary Description of Proposed Works

PHASE 1
Development of 'South Quay' by reclamation of circa 8,000m² of Harbour bed to create 180 linear metres of berthing face to south facing quay.

Design layout allows for retention of Port of Poole Marina through minor pontoon reconfiguration

PHASE 2
Extension to 'South Quay' by reclamation of a further (circa) 7,000m² of Harbour bed to create 120 linear metres of berthing face to east facing quay and an enhanced shore side Port operational area.

Existing oil jetty berth removed to enable access to marina.

Design layout impacts on Port of Poole Marina (reduction in capacity) through pontoon reconfiguration.

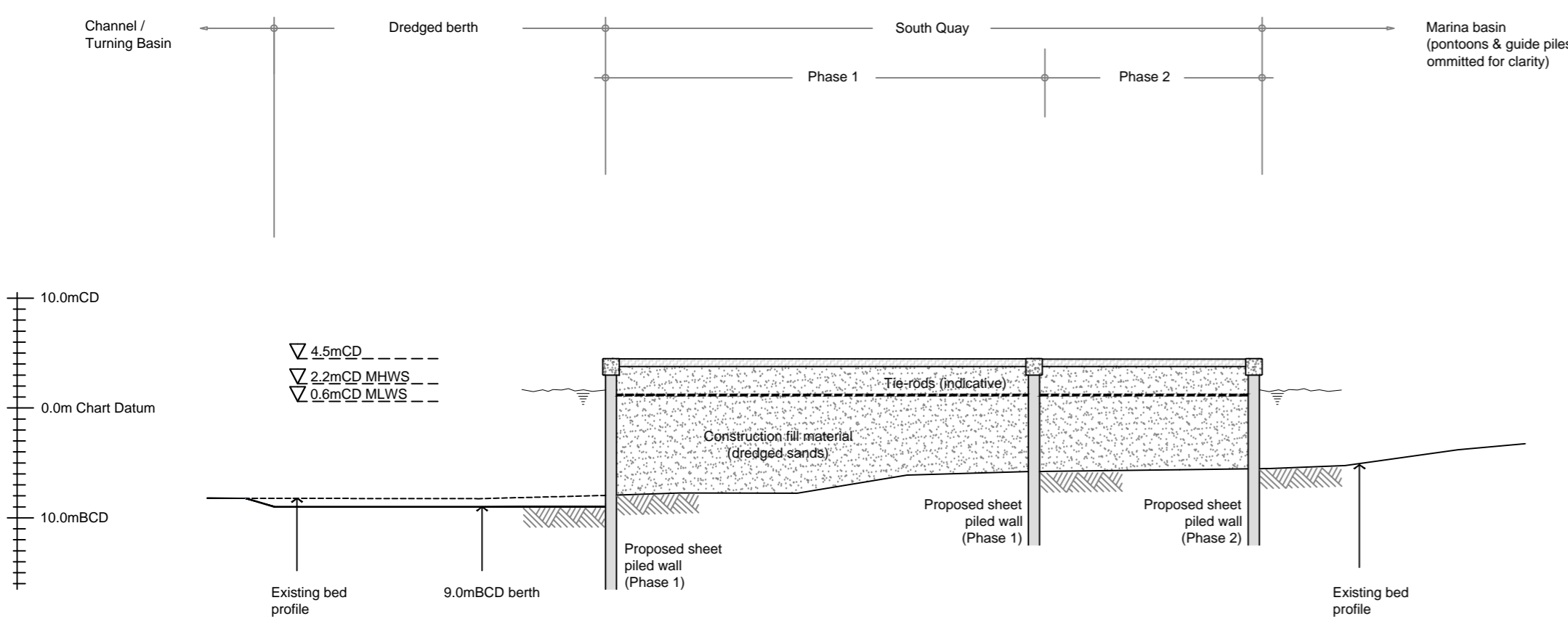
Setting Out Points

D1	50 42.467N, 001 59.309W
D2	50 42.468N, 001 59.214W
D3	50 42.500N, 001 59.180W
D4	50 42.503N, 001 59.157W
D5	50 42.434N, 001 59.142W
D6	50 42.434N, 001 59.302W
D7	50 42.441N, 001 59.349W
D8	50 42.457N, 001 59.302W
D9	50 42.457N, 001 59.147W

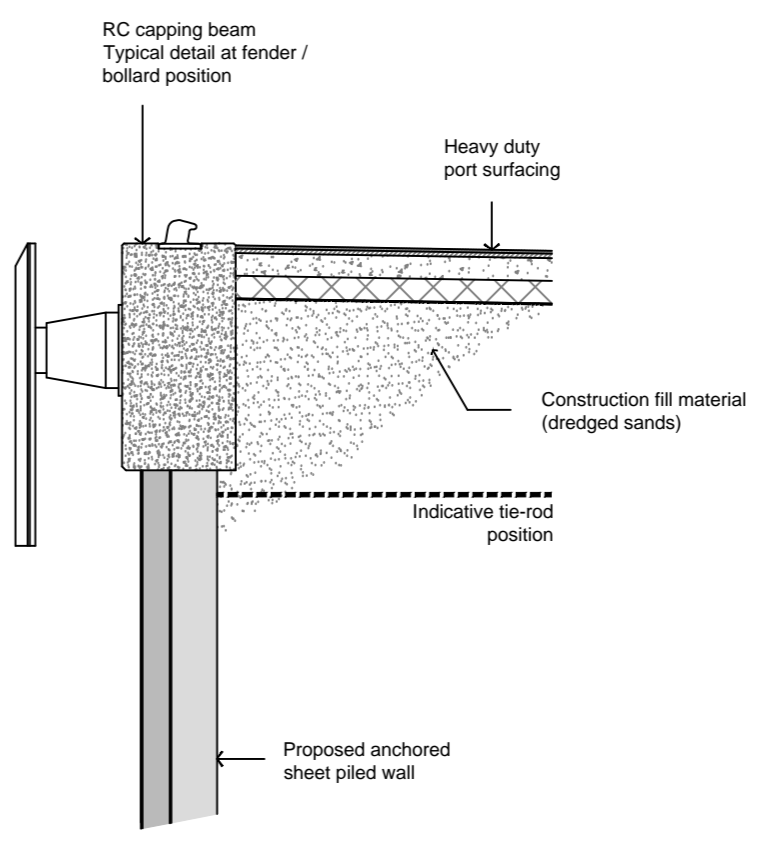
NOTES

1. Building and land uses shown are indicative only.

**Section 5-5
Scale 1:500**



**South Quay detail
(section at fender)
Scale 1:100**



revision	amendment	date

POOLE HARBOUR COMMISSIONERS

The Poole Harbour Revision (Works)
Order 2014

PHASE 1 & 2 WORKS

drawn	pba
date	20.01.2014
scale	as stated @ A2

drawing no.	HRO2	revision	
Andy Ramsbottom MSc CEng MICE Harbour Engineer Harbour Office, 20 New Quay Road Hamworthy, Poole, Dorset. BH15 4AF			