

MARINE MANAGEMENT ORGANISATION

MARINE AND COASTAL ACCESS ACT 2009 (2009 c.23)

THE INNER DOWSING, RACE BANK AND NORTH RIDGE EUROPEAN MARINE SITE (SPECIFIED AREAS) BOTTOM TOWED FISHING GEAR BYELAW

The Marine Management Organisation¹, in exercise of the powers conferred by regulation 38 of the Conservation of Habitats and Species Regulations 2010² and section 129 of the Marine and Coastal Access Act 2009³, and having:

- placed copies of the draft byelaw in convenient places for the purpose of inspection in accordance with section 130(3) of that Act;
- provided a copy of the draft byelaw to any person upon request in accordance with section 130(4) of that Act;
- published notice of its proposal to make the byelaw in accordance with sections 130(6) and 130(7) of that Act;

makes the following byelaw.

Interpretation

1. In this byelaw “the specified areas” means Area 1, Area 2 and Area 3 as defined in the Schedule.

Prohibition

2. No person shall use any bottom towed fishing gear in the specified areas.

Exemption for Scientific, Stocking or Breeding Purposes

3. This byelaw shall not apply to any person performing an act which would otherwise constitute an offence against this byelaw, if that act was carried out in accordance with a written permission issued by the Marine Management Organisation permitting that act for scientific, stocking or breeding purposes.

(1) The Marine Management Organisation was established by the Marine and Coastal Access Act 2009, section 1.

(2) S.I. 2010/490 amended by S.I. 2012/1927.

(3) 2009 c. 29

Citation

4. This byelaw may be cited as the Inner Dowsing, Race Bank and North Ridge European Marine Site (Specified Areas) Bottom Towed Fishing Gear Byelaw.

Made under the Common Seal of the Marine Management Organisation
this 11th day of December 2013.

LS

The Common Seal of the Marine
Management Organisation was
affixed to this byelaw in the
presence of:

James Cross
Chief Executive of the Marine
Management Organisation

The Secretary of State for Environment, Food and Rural Affairs in exercise of the power conferred by section 130(8) of the Marine and Coastal Access Act 2009 confirms the Inner Dowsing, Race Bank and North Ridge European Marine Site (Specified Areas) Bottom Towed Fishing Gear Byelaw made by the Marine Management Organisation on 11th December 2013 and has determined that the byelaw comes into force as soon as practicably possible.

[name]

[Job title]

A Senior Civil Servant for, and on behalf of, the Secretary of State for Environment, Food and Rural Affairs

Date:

SCHEDULE

Definitions of Area 1, Area 2 and Area 3

Co-ordinates used in this Schedule are based on WGS 84 datum, where 'WGS 84' means the World Geodetic System, revised in 1984.

"Area 1" means the area enclosed by a line drawn from:

Point A (53 Degrees 15.387 Minutes North, 0 Degrees 38.917 Minutes East) to
Point B (53 Degrees 15.292 Minutes North, 0 Degrees 39.317 Minutes East) to
Point C (53 Degrees 15.037 Minutes North, 0 Degrees 39.502 Minutes East) to
Point D (53 Degrees 14.797 Minutes North, 0 Degrees 39.343 Minutes East) to
Point E (53 Degrees 14.686 Minutes North, 0 Degrees 38.917 Minutes East) to
Point F (53 Degrees 14.797 Minutes North, 0 Degrees 38.491 Minutes East) to
Point G (53 Degrees 15.037 Minutes North, 0 Degrees 38.333 Minutes East) to
Point H (53 Degrees 15.292 Minutes North, 0 Degrees 38.517 Minutes East)
and then from Point H to Point A.

"Area 2" means the area enclosed by a line drawn from:

Point A (53 Degrees 06.451 Minutes North, 0 Degrees 27.963 Minutes East) to
Point B (53 Degrees 06.451 Minutes North, 0 Degrees 28.122 Minutes East) to
Point C (53 Degrees 06.402 Minutes North, 0 Degrees 28.177 Minutes East) to
Point D (53 Degrees 06.013 Minutes North, 0 Degrees 28.225 Minutes East) to
Point E (53 Degrees 05.906 Minutes North, 0 Degrees 28.209 Minutes East) to
Point F (53 Degrees 05.802 Minutes North, 0 Degrees 28.104 Minutes East) to
Point G (53 Degrees 05.767 Minutes North, 0 Degrees 27.901 Minutes East) to
Point H (53 Degrees 05.700 Minutes North, 0 Degrees 27.926 Minutes East) to
Point I (53 Degrees 05.563 Minutes North, 0 Degrees 27.777 Minutes East) to
Point J (53 Degrees 05.538 Minutes North, 0 Degrees 27.534 Minutes East) to
Point K (53 Degrees 05.592 Minutes North, 0 Degrees 27.456 Minutes East) to
Point L (53 Degrees 05.700 Minutes North, 0 Degrees 27.505 Minutes East) to
Point M (53 Degrees 05.836 Minutes North, 0 Degrees 27.768 Minutes East) to
Point N (53 Degrees 06.145 Minutes North, 0 Degrees 27.780 Minutes East) to
Point O (53 Degrees 06.381 Minutes North, 0 Degrees 27.886 Minutes East)
and then from Point O to Point A.

"Area 3" means the area enclosed by a line drawn from:

Point A (53 Degrees 04.405 Minutes North, 0 Degrees 27.235 Minutes East) to
Point B (53 Degrees 04.362 Minutes North, 0 Degrees 27.399 Minutes East) to
Point C (53 Degrees 04.281 Minutes North, 0 Degrees 27.390 Minutes East) to
Point D (53 Degrees 04.281 Minutes North, 0 Degrees 27.201 Minutes East) to
Point E (53 Degrees 04.362 Minutes North, 0 Degrees 27.147 Minutes East)
and then from Point E to Point A.

Explanatory Note
(*This note is not part of the Byelaw*)

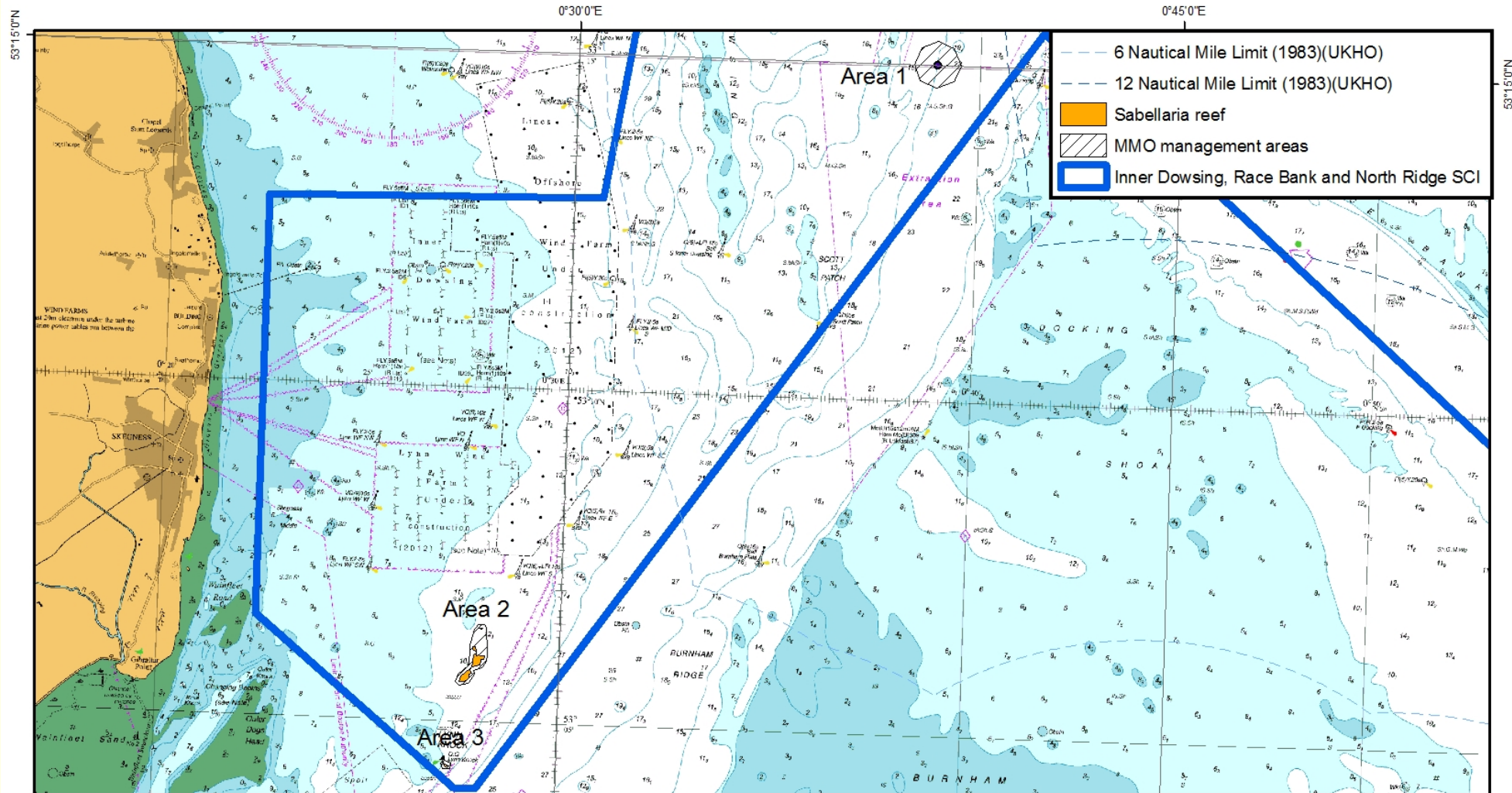
The Marine Management Organisation has made this byelaw to ensure that fishing activities are managed in a manner that secures compliance with the requirements of Article 6 of Council Directive 92/43/EEC of 21 May 1992 on the conservation of natural habitats and of wild fauna and flora.

This byelaw protects biogenic rock worm (*Sabellaria spinulosa*) reefs by prohibiting the use of bottom towed fishing gear in specified areas of the Inner Dowsing, Race Bank and North Ridge European Marine Site.

The specified areas are defined in paragraph 1 of and the Schedule to this byelaw.

The specified areas are identified, for illustrative purposes only, on the maps below.

Inner Dowsing, Race Bank and North Ridge SCI (Area 1, 2 and 3)



©British Crown, NERC and SeaZone Solutions Ltd. All rights reserved. [SZ042010.001]. Reproduced with permission of the Joint Nature Conservation Commission.
 © Crown Copyright and database right [2013]. All rights reserved. Contains UKHO Law of the Sea data Copyright ©Marine Management Organisation. © ICES
 (<http://geo.ices.dk/>) Not to be used for navigation.