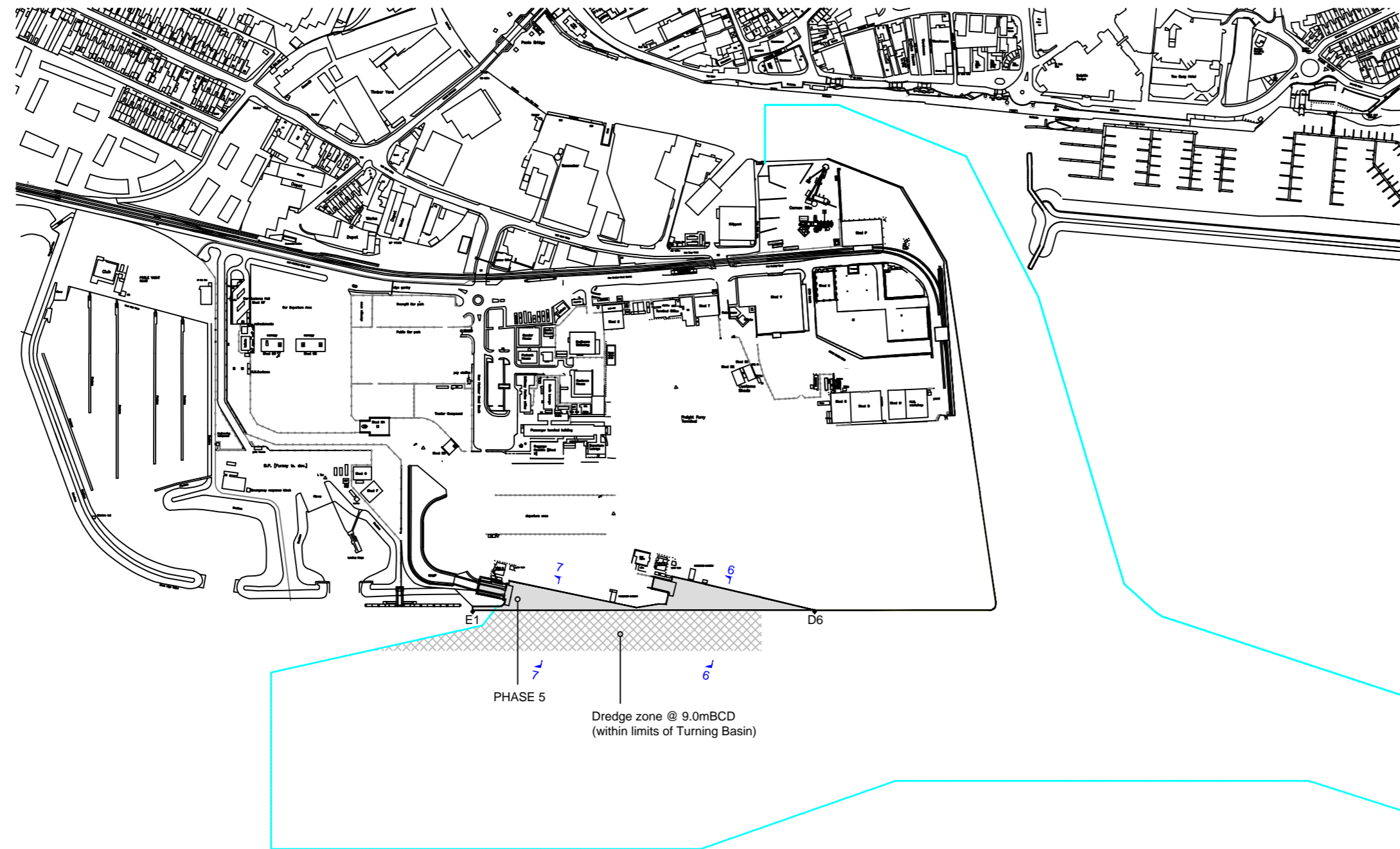
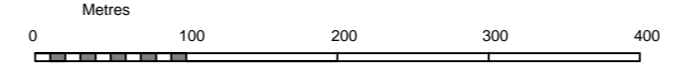




Layout Plan
Scale 1:5000



Based upon Ordnance Survey Map with the sanction of the Controller of H.M. Stationery Office



LEGEND

Denotes maintained Channels

Summary Description of Proposed Works

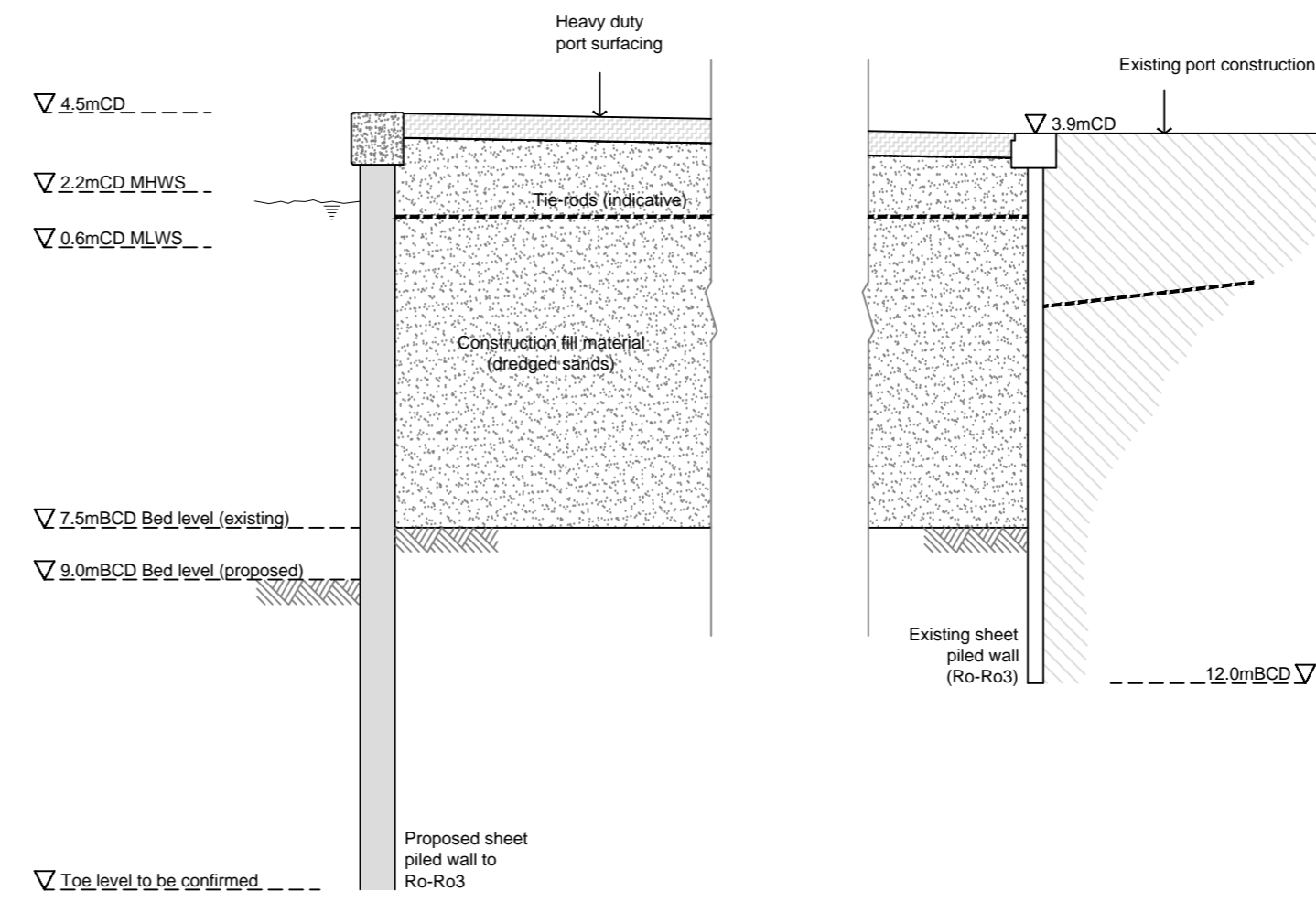
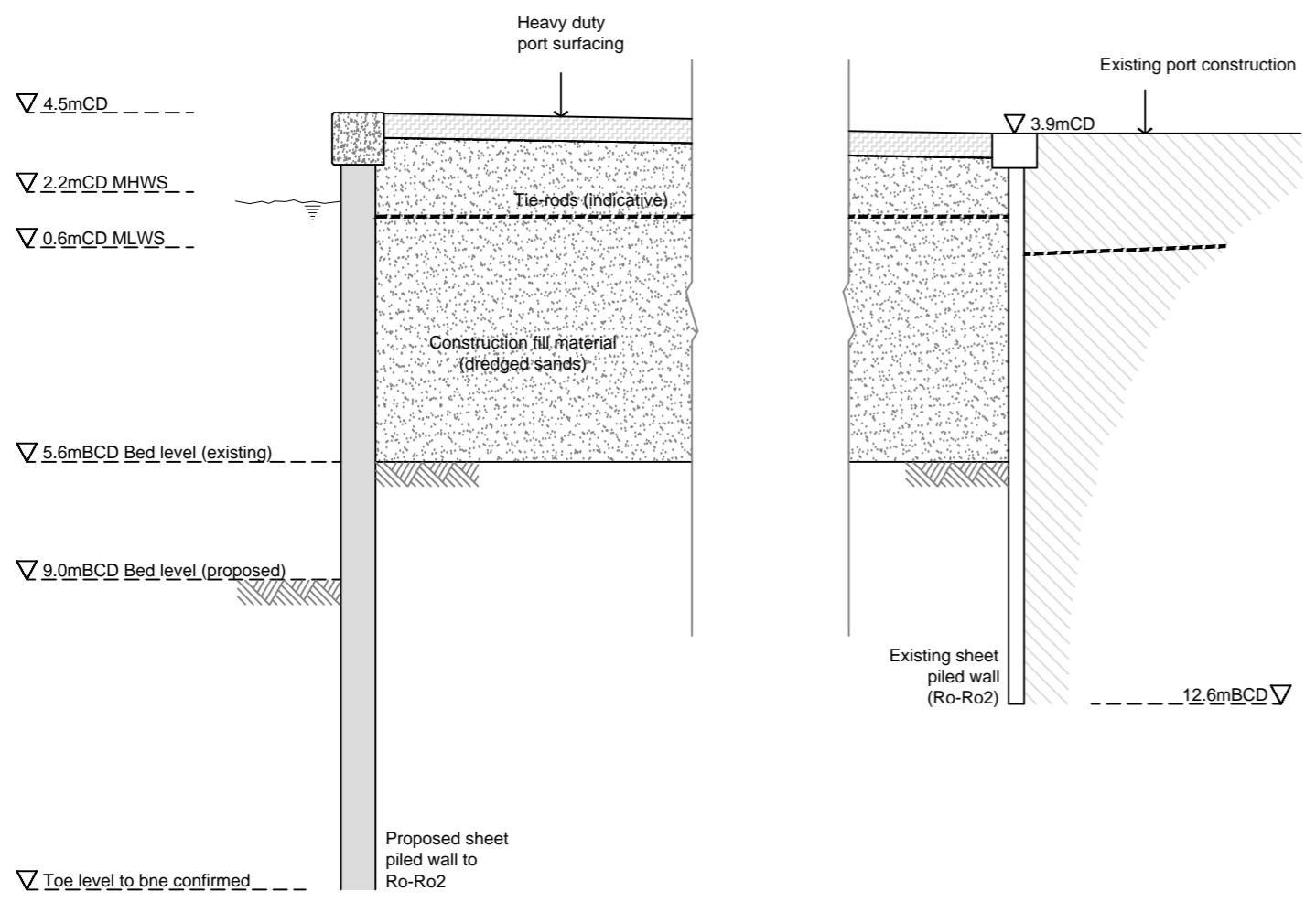
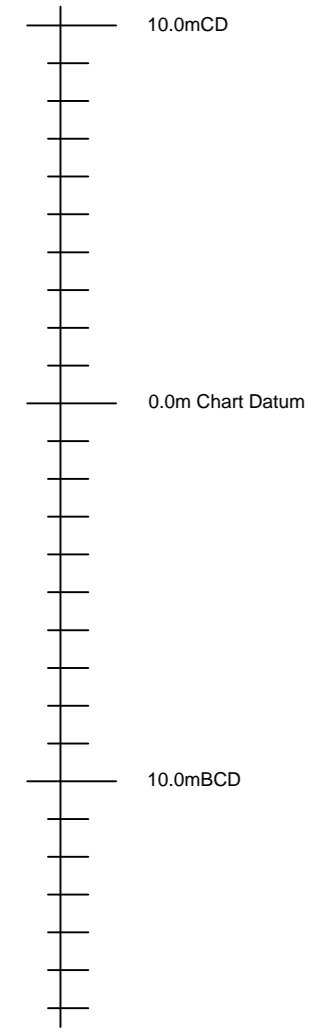
PHASE 5
Reconstruction of existing Ro-Ro berths 2 and 3 by reclamation of circa 5,000m² of Harbour bed to create 350 linear metres of berthing face, dredged to 9.0mBCD

Setting Out Points
E1 50 42.434N, 001 59.601W
D6 50 42.434N, 001 59.302W

NOTES
1. Building and land uses shown are indicative only.

Section 6-6
Scale 1:200

Section 7-7
Scale 1:200



| revision | amendment | date |
|----------|-----------|------|
| | | |

POOLE HARBOUR COMMISSIONERS

The Poole Harbour Revision (Works)
Order 2014

PHASE 5 WORKS

| | |
|-------------------------|----------|
| drawn pba | revision |
| date 20.01.2014 | |
| scale as stated @ A2 | |
| drawing no. HRO5 | |

Andy Ramsbottom MSc CEng MICE
Harbour Engineer
Harbour Office, 20 New Quay Road
Hamworthy, Poole, Dorset. BH15 4AF