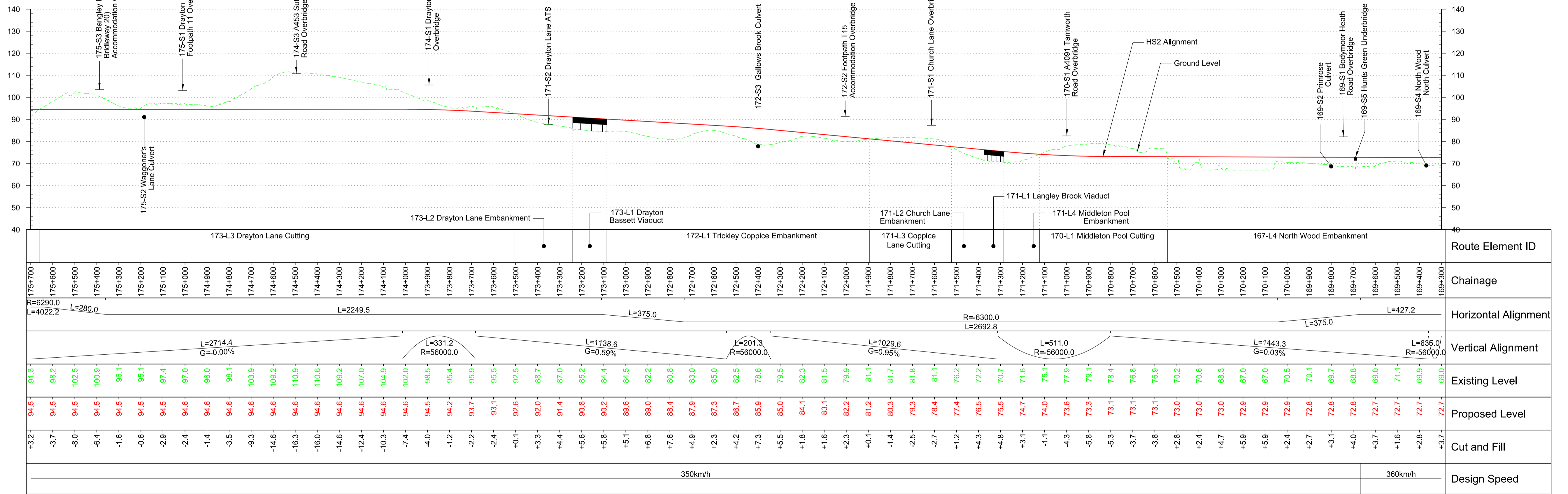
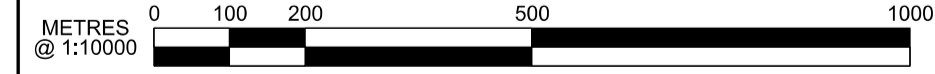


Plan Scale 1:10000



Profile Scale H 1:10000 V 1:1000



Note: Bridge Profiles indicated at FRL to HS2 track

Rev	Description	Drawn	Checked	Con App	HS2 App
P11	Condition B. Code 1. Fit for hybrid bill submission	NOR	MSB	PD	17/12/13
P10	Issued for CP3	NOR	MSB	PD	29/11/13
P09	Issued for CP3	RPH	MSB	PD	28/10/13
P08	Revised Interim Condition B	NOR	MSB	PD	21/10/13
P07	Revised Interim Condition B	NOR	MSB	PD	29/08/13

HS2 accepts no responsibility for any circumstances which arise from the reproduction of this document after alteration, amendment or abbreviation or if it is issued in part or issued incompletely in any way.

© Crown Copyright and database right 2013. All rights reserved. Ordnance Survey Licence number 100049190

© Crown Copyright material is reproduced with the permission of Land Registry under delegated authority from the Controller of HMSO.

This material was last updated on 2013 and may not be copied, distributed, sold or published without the formal permission of Land Registry. Only an official copy of a title plan or register obtained from the Land Registry may be used for legal or other official purposes.

Scale with caution as distortion can occur.

**Legends/Notes:**

- Depot, station, headhouse or portal building
- Tunnel portal
- Electricity substation
- Land drainage area
- Ecological mitigation pond
- Balancing pond
- Replacement floodplain storage
- Woodland habitat creation
- Wetland habitat creation
- Grassland habitat creation
- Landscape mitigation planting (scrub / woodland)
- Grassed areas
- Sustainable placement
- Public realm
- Engineering earthworks
- Landscape earthworks
- Rail alignment formation
- Returned to suitable development use
- County boundary
- Borough / District boundary
- Community forum boundary
- Watercourse diversion
- Existing watercourse
- Ditches - new
- Hedgerow habitat creation
- Main utility works
- Existing public right of way (PRoW)
- New, diverted or realigned PRoW
- Stopped-up PRoW
- Tunnels external extent
- Rail alignment
- HS2 Access road
- Noise fence barrier
- Chainage (e.g. 10+000)

Registered in England  
Registration No. 06791666  
Registered office:  
Eland House,  
Bressenden Place,  
London, SW1E 5DU

Creator/Organizer  
**Capita Symonds Ineco JV**

HS2 Security Classification  
**INTERNAL**

Zone	Country North	Project/Contract	Country North Design
Design Stage	hybrid bill submission	Discipline/Function Civil	
Drawing Title	Main Line Sheet 45 of 49 Chainage 169+300 to 175+700	Drawn NOR	Checked MSB
		Approved PD	
		Date 11/03/2013	Scale AS SHOWN
		Size A1	
		Rev. P11	