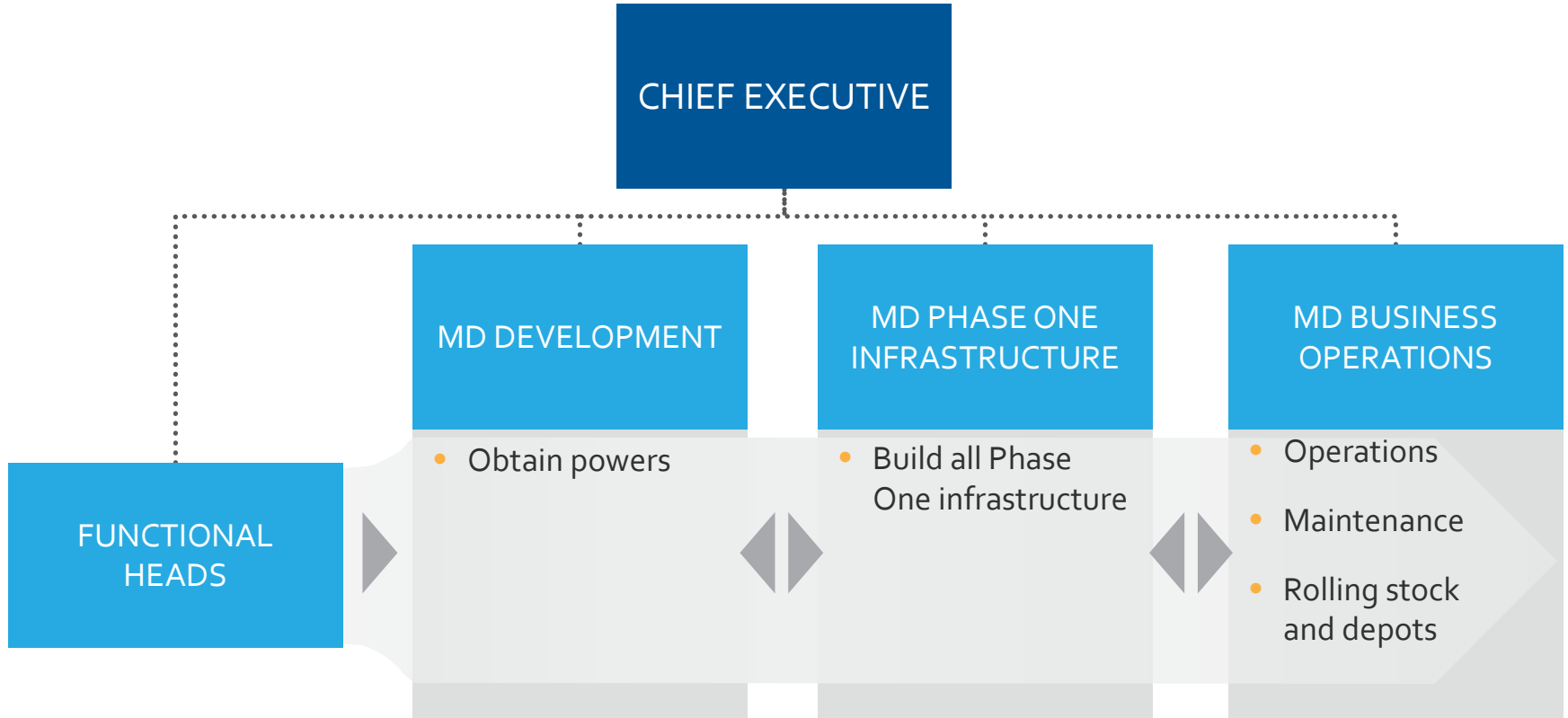


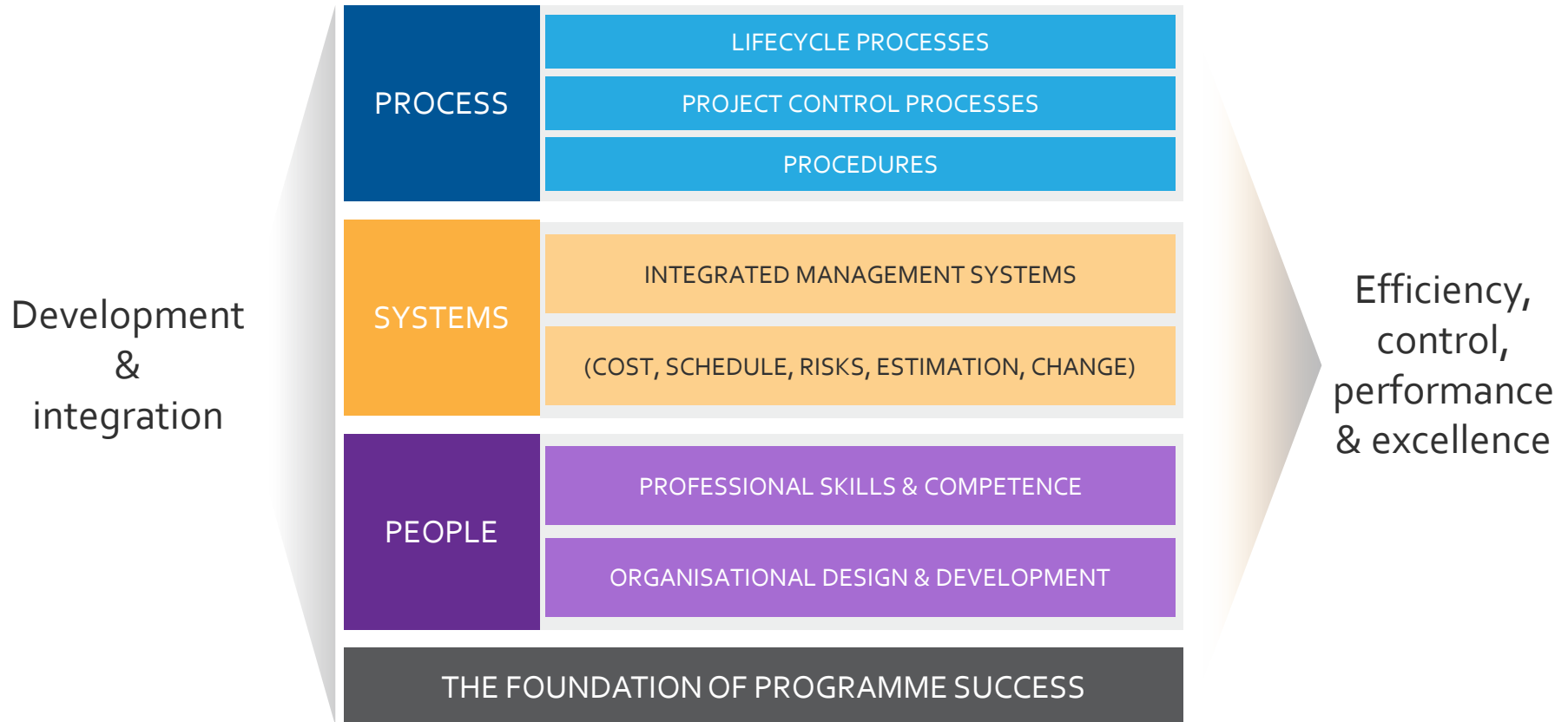
Alistair Kirk

Programme and Strategy Director

HS2 organisation

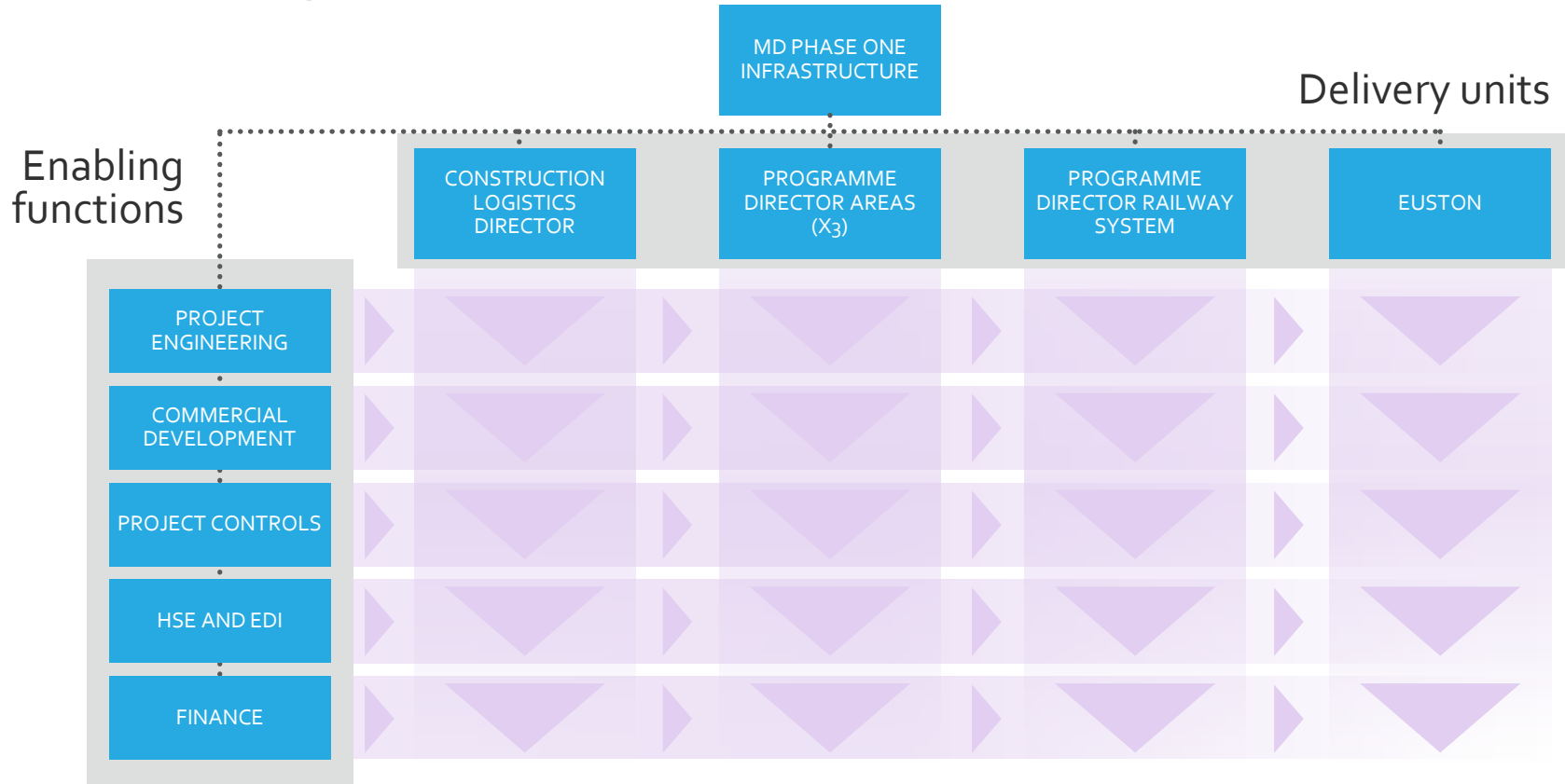


Programme management framework

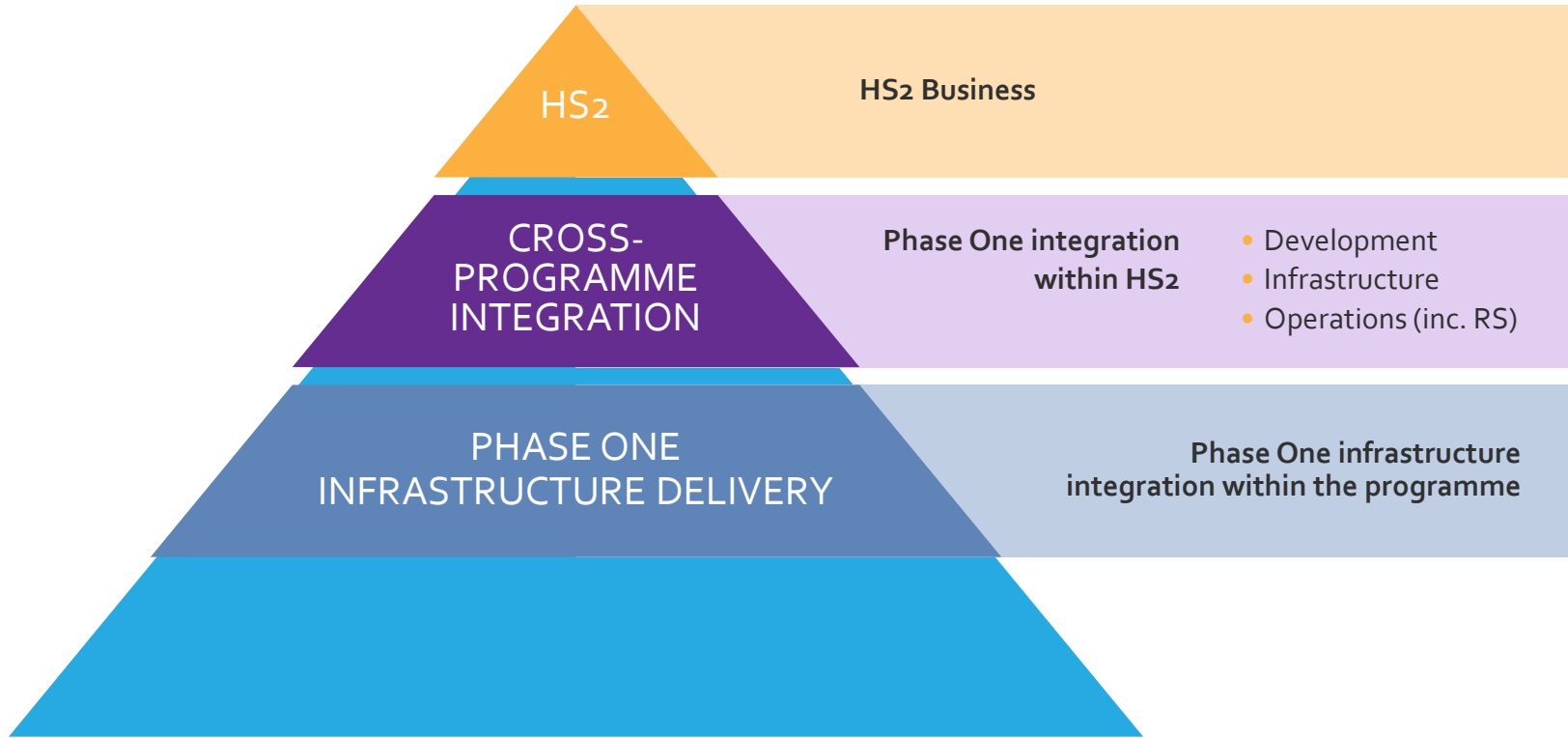


Phase One infrastructure

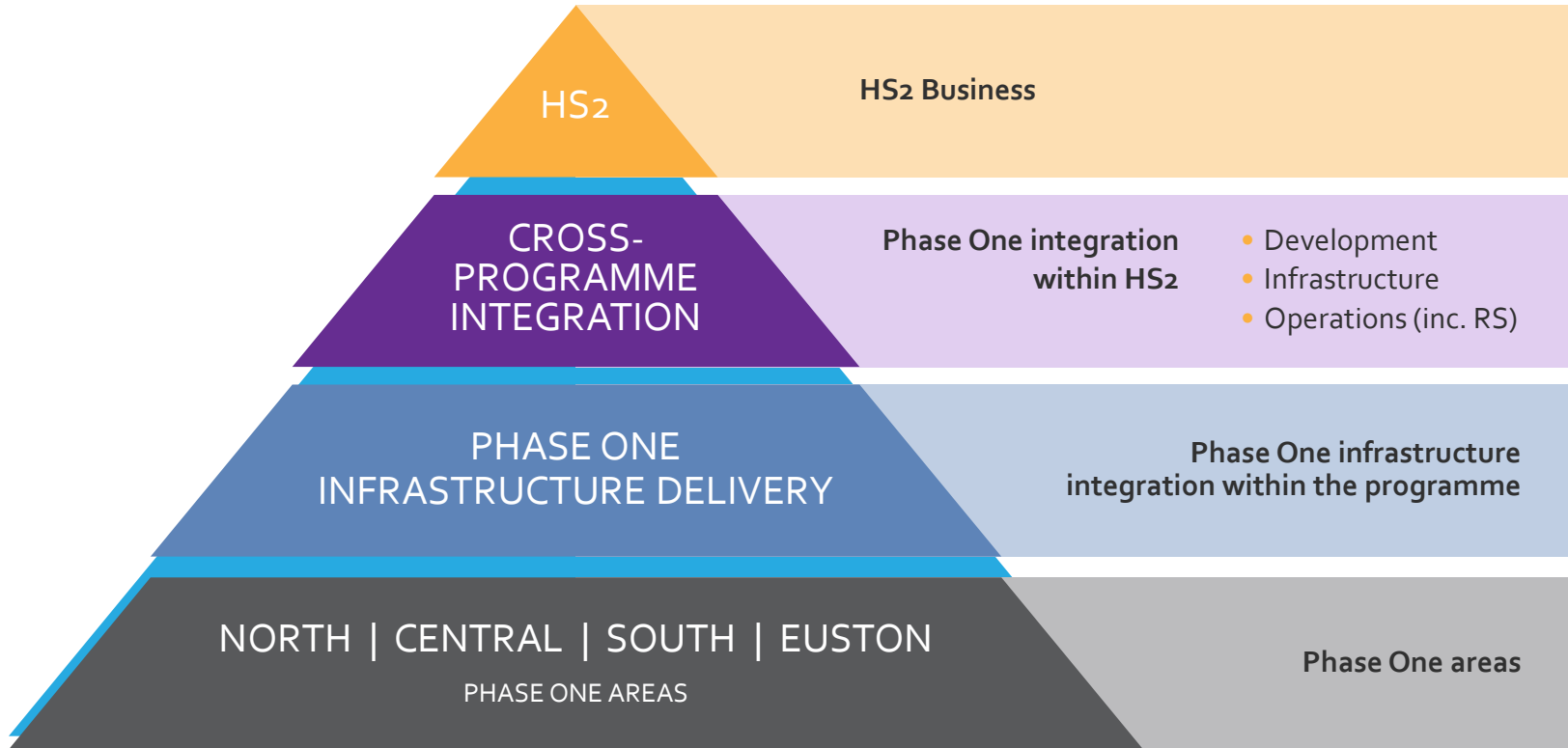
HS2 management structure

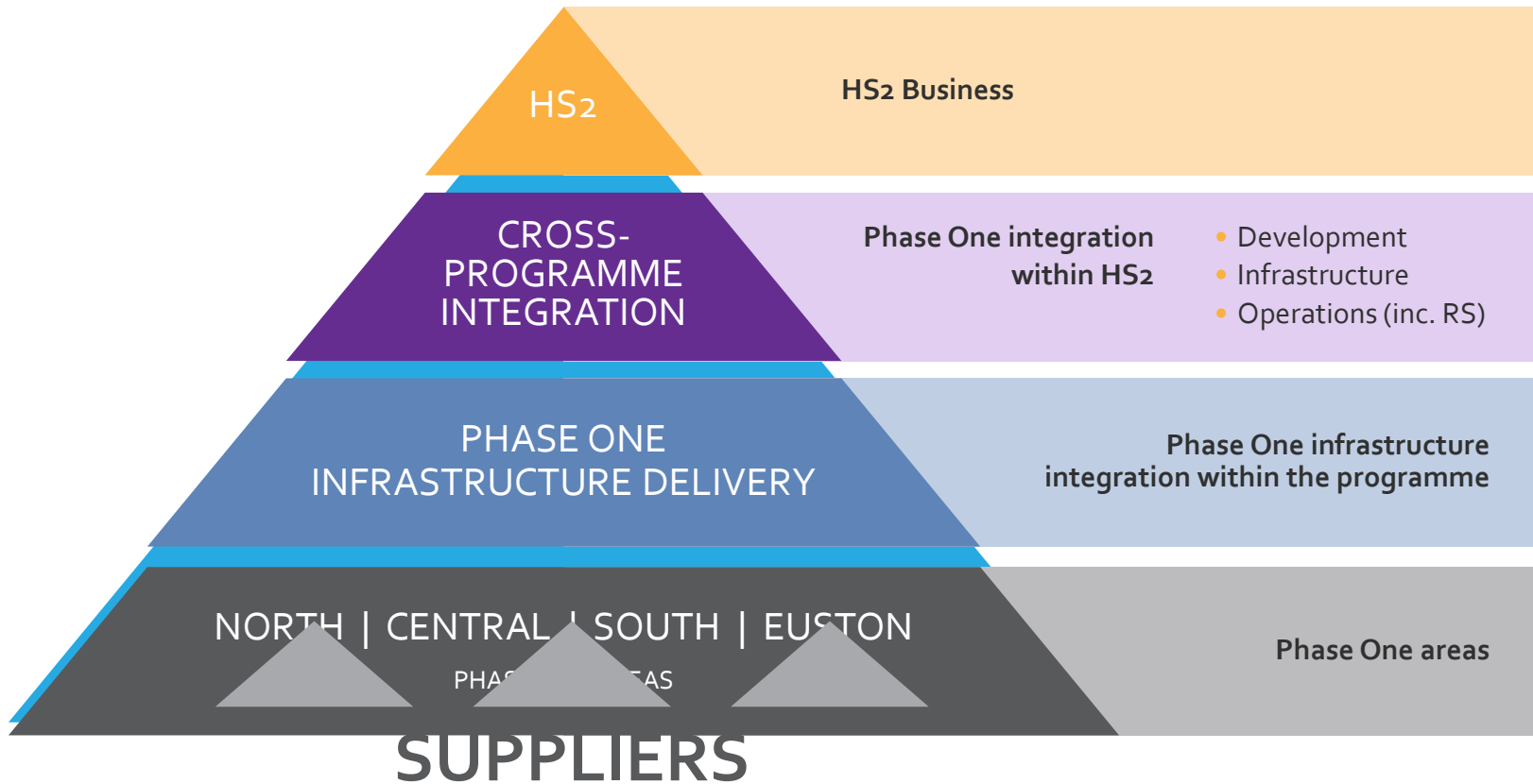


HS2 management structure

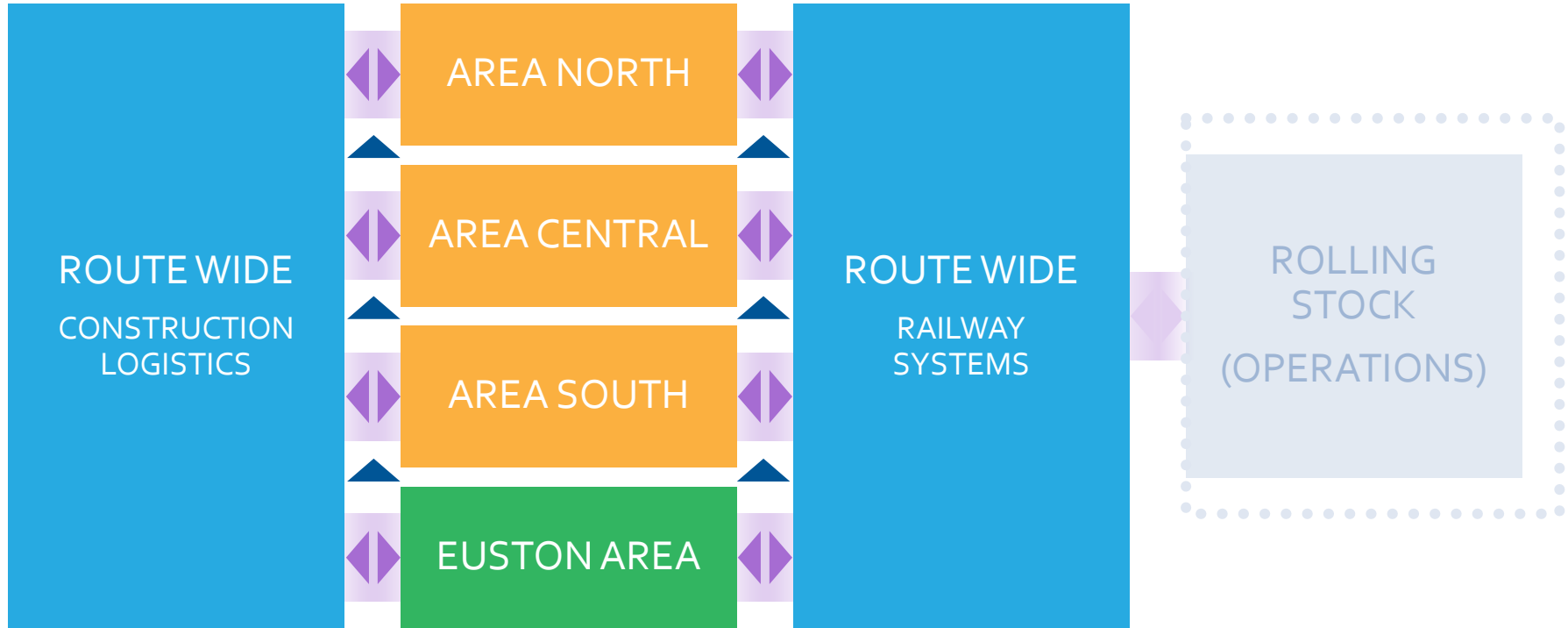


HS2 management structure

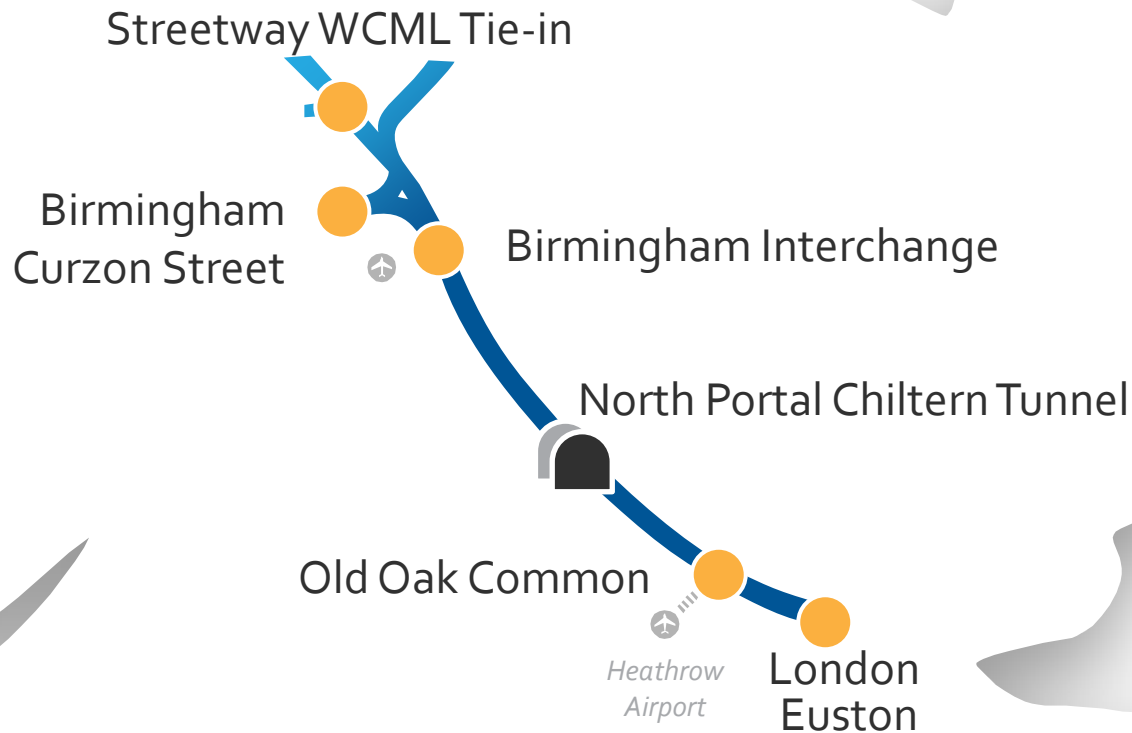




Phase One infrastructure programme integration



Structure: Area model



North

Streetway WCML Tie-in



Birmingham
Curzon Street

Birmingham
Interchange

Civil Packages

- N1 → Birmingham International Station to Handsacre
- N2 → Birmingham Spur
- N3 → Stations

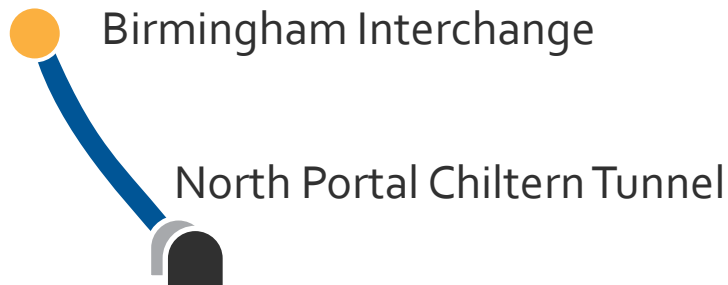
Up to
£3 Bn

Central

Up to
£3 Bn

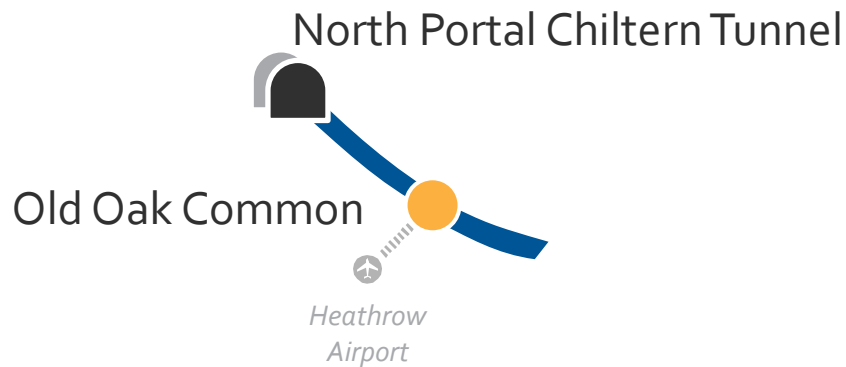
Civil Packages

- C₁ → Birmingham Interchange to Greatworth = 45-75km
- C₂ → Greatworth to Quainton = 75-104km
- C₃ → Quainton to Chiltern Tunnel North Portal = 104-155km



Overall
distance
= 110km

South



Civils Packages

Up to
£3 Bn

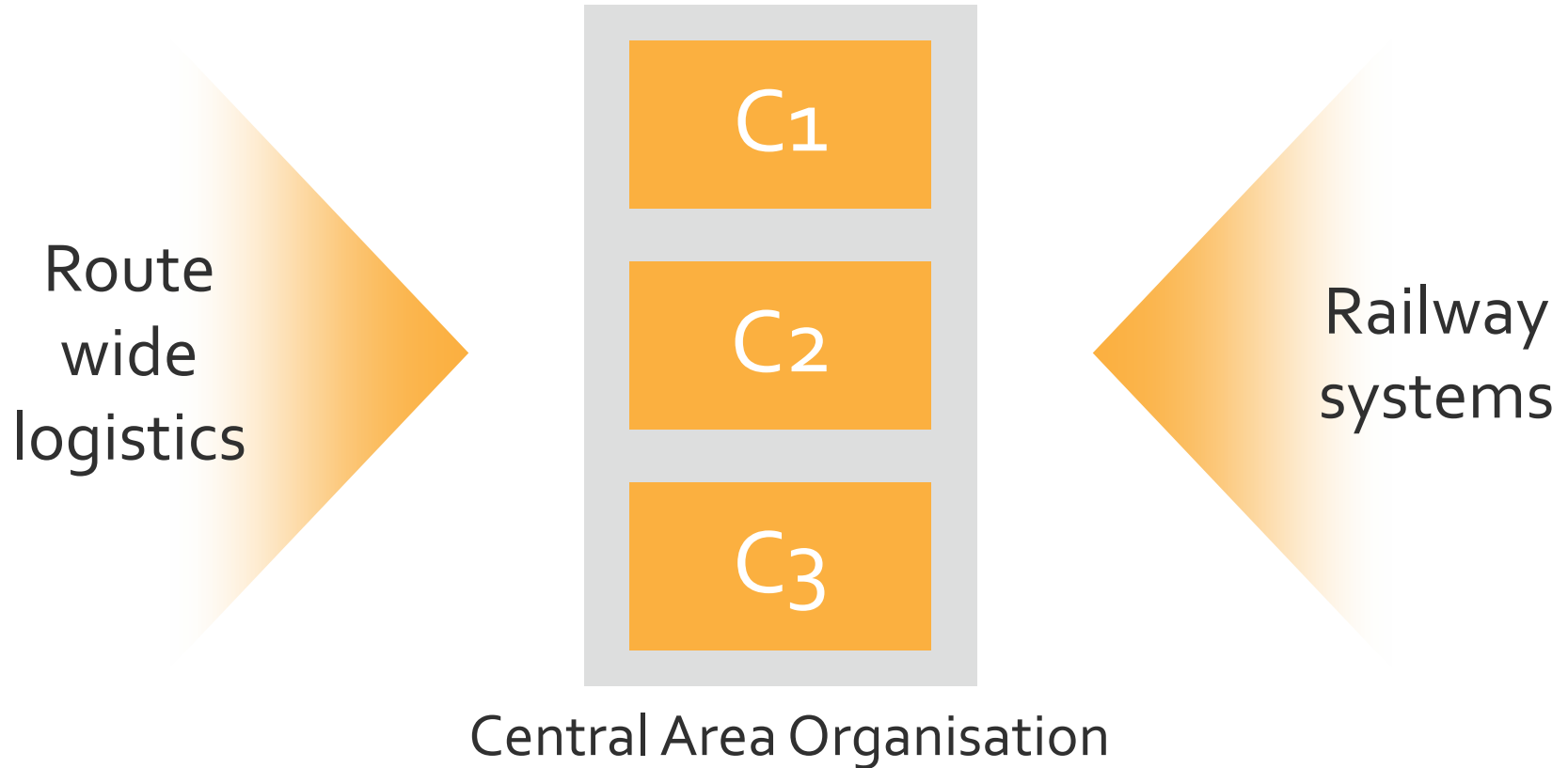
- S₁ → OOC box and London Tunnels to Euston
- S₂ → Northolt tunnels
- S₃ → Chiltern tunnels and Colne Valley Viaduct

Euston

DELIVERY
MODEL UNDER
DEVELOPMENT
BETWEEN
NR AND HS₂

IMPACTED BY
WIDER EUSTON
REDEVELOPMENT

Area integration: Contract level



Key construction statistics

230km

TOTAL ROUTE
LENGTH

53km

TOTAL LENGTH IN
TUNNELS

74km

TOTAL LENGTH IN
CUTTINGS

152

STRUCTURES
UNDERBRIDGES

145

STRUCTURES
OVER BRIDGES

128 mt

TOTAL VOLUME OF
EXCAVATED
MATERIAL
(90% TO BE RE USED)

31

MAIN COMPOUNDS
FOR
CONSTRUCTION

299

SATELLITE
COMPOUNDS

Hierarchy of design

Level of Design

Delivered by

SPECIFICATION DESIGN

HS₂ TECHNICAL DIRECTORATE

EMPLOYERS REQUIREMENT DESIGN

HS₂ PHASE ONE INFRASTRUCTURE

SUPPLIERS SCHEME DESIGN

ECI STAGE 1

SUPPLIERS DETAILED DESIGN

STAGE 2 DESIGN & CONSTRUCTION



Design procurement

Short/Medium term

EMPLOYERS REQUIREMENT DESIGN
(LEVEL 2)

COMPETITION UNDER EXISTING PSC
FRAMEWORKS

TARGET IN PLACE APRIL 2015

Medium/Long term

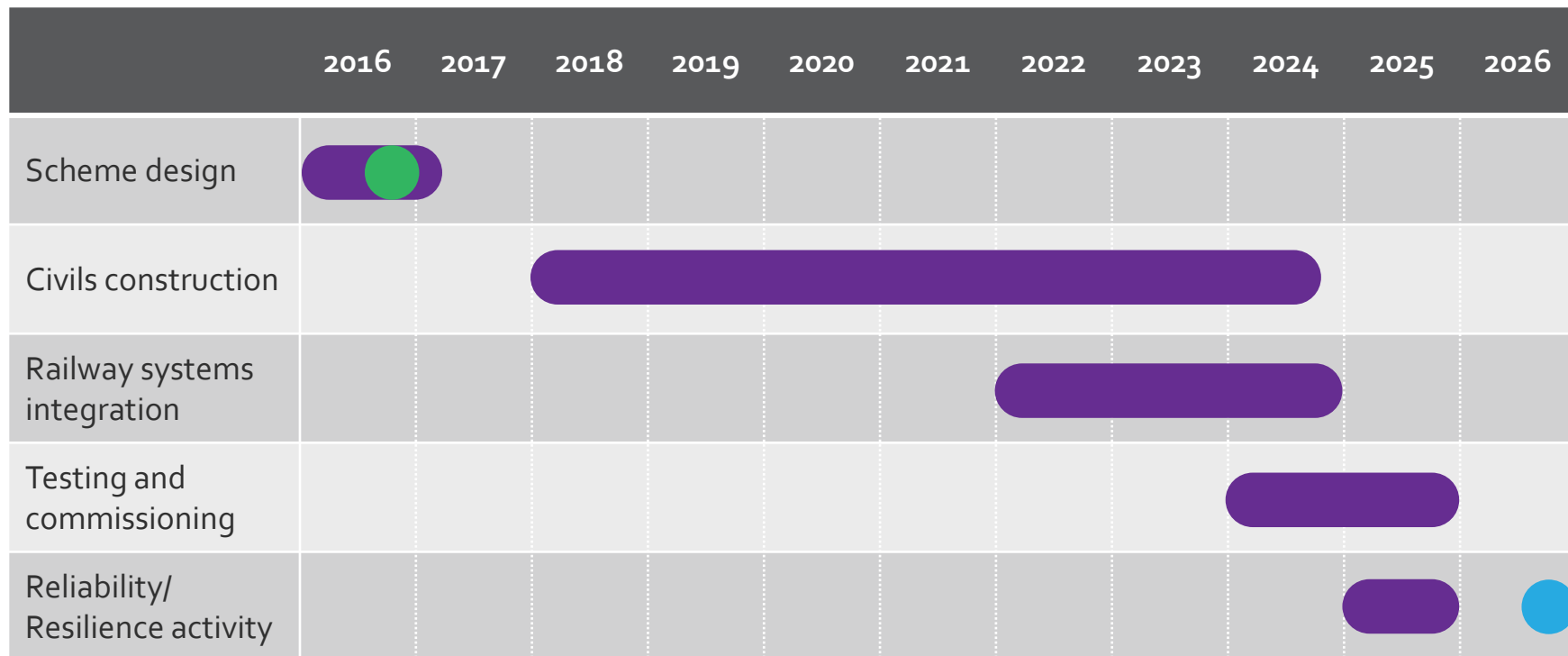
DESIGN INTEGRATION AND ASSURANCE
OF SUPPLIERS SCHEME AND DETAILED
DESIGNS (REVIEWING L₃/L₄ DESIGNS)

OJEU COMPETITION

TARGET IN PLACE END DECEMBER 2016

Timeline: High level schedule

- Royal assent
- Entry to service



Key opportunities

SAFE AND INCLUSIVE
DESIGN –
THROUGHOUT
LIFECYCLE

INCREASED FOCUS
ON OCCUPATIONAL
HEALTH

EXCELLENCE IN
PLANNING &
UTILISATION BIM

RECOGNISE THIS IS
NEW BUILD NOT
MODIFYING OF
EXISTING

ECI BENEFITS –
INNOVATION,
CONSTRUCTABILITY

MANAGING THE
IMPACT ON THE
ENVIRONMENT AND
LEAVING A
SUSTAINABLE
LEGACY

Looking forward to
working with you

Supply Chain Conference
#hs2supplychain

Supply Chain Conference