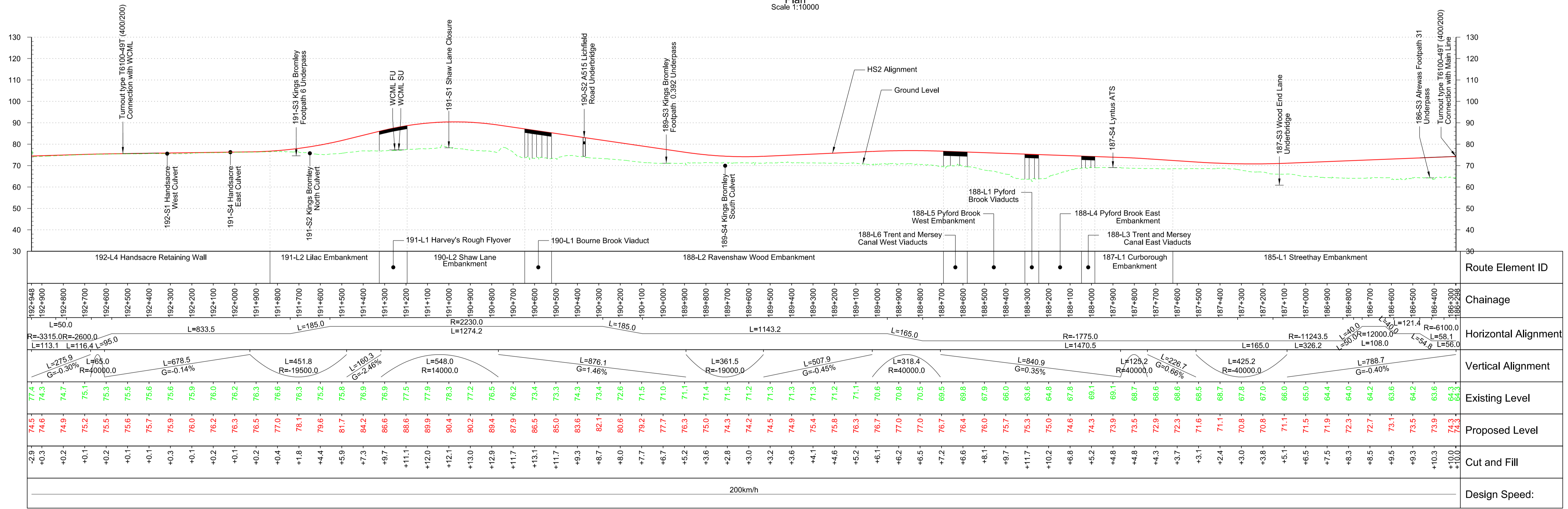


Plan Scale 1:10000



Profile Scale H 1:10000 V 1:1000

Rev	Description	Drawn	Checked	Con App	HS2 App
P10	Condition B, Code 1. Fit for hybrid bill submission	NOR	MC	PD	17/12/13
P09	Issued for CP3	NOR	MC	PD	29/11/13
P08	Revised Interim Condition B	NOR	MC	PD	21/10/13
P07	Revised Interim Condition B	NOR	PD	PD	29/08/13
P06	Interim Condition B	JHI	MC	PD	28/06/13

HS2 accepts no responsibility for any circumstances which arise from the reproduction of this document after alteration, amendment or abbreviation or if it is issued in part or issued incompletely in any way.

© Crown Copyright and database right 2013. All rights reserved. Ordnance Survey Licence number 100049190

© Crown Copyright material is reproduced with the permission of Land Registry under delegated authority from the Controller of HMSO.

This material was last updated on 2013 and may not be copied, distributed, sold or published without the formal permission of Land Registry. Only an official copy of a title plan or register obtained from the Land Registry may be used for legal or other official purposes.

Scale with caution as distortion can occur.

Legends/Notes:

- Depot, station, headhouse or portal building
- Tunnel portal
- Electricity substation
- Land drainage area
- Ecological mitigation pond
- Balancing pond
- Replacement floodplain storage
- Woodland habitat creation
- Wetland habitat creation
- Grassland habitat creation
- Landscape mitigation planting (scrub / woodland)
- Grassed areas
- Sustainable placement
- Public realm
- Engineering earthworks
- Landscape earthworks
- Rail alignment formation
- Returned to suitable development use
- County boundary
- Borough / District boundary
- Community forum boundary
- Watercourse diversion
- Existing watercourse
- Ditches - new
- Hedgerow habitat creation
- Main utility works
- Existing public right of way (PRoW)
- New, diverted or realigned PRoW
- Stopped-up PRoW
- Tunnels external extent
- Rail alignment
- HS2 Access road
- Noise fence barrier
- Chainage (e.g. 10+000)

Registered in England
Registration No. 06791666
Registered office:
Eland House,
Bressenden Place,
London, SW1E 5DU

Creator/Organizer
Capita Symonds Ineco JV

HS2 Security Classification
INTERNAL

Zone	Country North	Project/Contract	Country North Design
Design Stage	hybrid bill submission	Discipline/Function	Civil
Drawing Title	Main Line	Drawn	NOR
	Sheet 48 of 49	Checked	PD
	Chainage 186+200 to 193+000 Down Line	Approved	PD
Date	11/03/2013	Scale	AS SHOWN
Drawing No.	C223-CSI-CV-DPP-030-000012	Size	A1
Rev.	P10	Rev.	P10