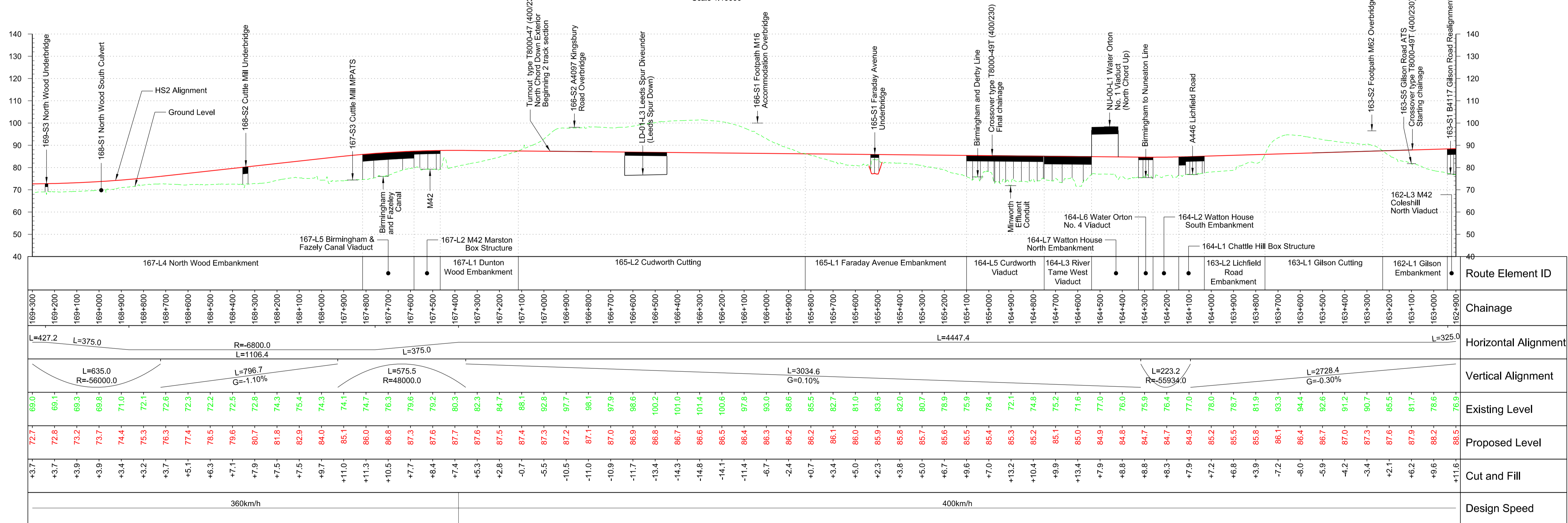
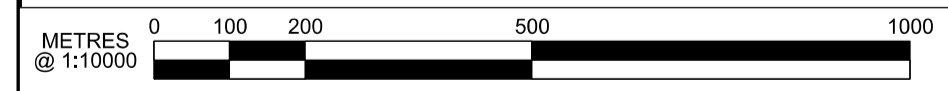


Plan Scale 1:10000



Profile Scale H 1:10000 V 1:1000



Note: Bridge Profiles indicated at FRL to HS2 track

Rev	Description	Drawn	Checked	Con App	HS2 App
P11	Condition B. Code 1. Fit for hybrid bill submission	NOR	MSB	PD	
P10	Issued for CP3	NOR	MSB	PD	
P09	Issued for CP3	RPH	MSB	PD	
P08	Revised Interim Condition B	NOR	MSB	PD	
P07	Revised Interim Condition B	NOR	MSB	PD	

HS2 accepts no responsibility for any circumstances which arise from the reproduction of this document after alteration, amendment or obsolescence or if it is issued in part or issued incompletely in any way.

© Crown Copyright and database right 2013. All rights reserved. Ordnance Survey Licence number 100049190

© Crown Copyright material is reproduced with the permission of Land Registry under delegated authority from the Controller of HMSO.

This material was last updated on 2013 and may not be copied, distributed, sold or published without the formal permission of Land Registry. Only an official copy of a title plan or register obtained from the Land Registry may be used for legal or other official purposes.

Scale with caution as distortion can occur.

Legends/Notes:

- Depot, station, headhouse or portal building
- Tunnel portal
- Electricity substation
- Land drainage area
- Ecological mitigation pond
- Balancing pond
- Replacement floodplain storage
- Woodland habitat creation
- Wetland habitat creation
- Grassland habitat creation
- Landscape mitigation planting (scrub / woodland)
- Grassed areas
- Sustainable placement
- Public realm
- Engineering earthworks
- Landscape earthworks
- Rail alignment formation
- Returned to suitable development use
- County boundary
- Borough / District boundary
- Community forum boundary
- Watercourse diversion
- Existing watercourse
- Ditches - new
- Hedgerow habitat creation
- Main utility works
- Existing public right of way (PRoW)
- New, diverted or realigned PRoW
- Stopped-up PRoW
- Tunnels external extent
- Rail alignment
- HS2 Access road
- Noise fence barrier
- Chainage (e.g. 10+000)

Registered in England
Registration No. 06791686
Registered office:
Eland House,
Bressenden Place,
London, SW1E 5DU

Creator/Organizer
Capita Symonds Ineco JV

HS2 Security Classification
INTERNAL

Zone
Country North

Design Stage
hybrid bill submission

Drawing Title
Main Line
Sheet 44 of 49
Chainage 162+900 to 169+300

Project/Contract
Country North Design

Discipline/Function
Civil

Drawn	Checked	Approved
NOR	MSB	PD

Date
11/03/2013

Scale
AS SHOWN

Size
A1

Drawing No.
C223-CSI-CV-DPP-030-000008

Rev.
P11