

NATURAL ENGLAND

# NO DOGS

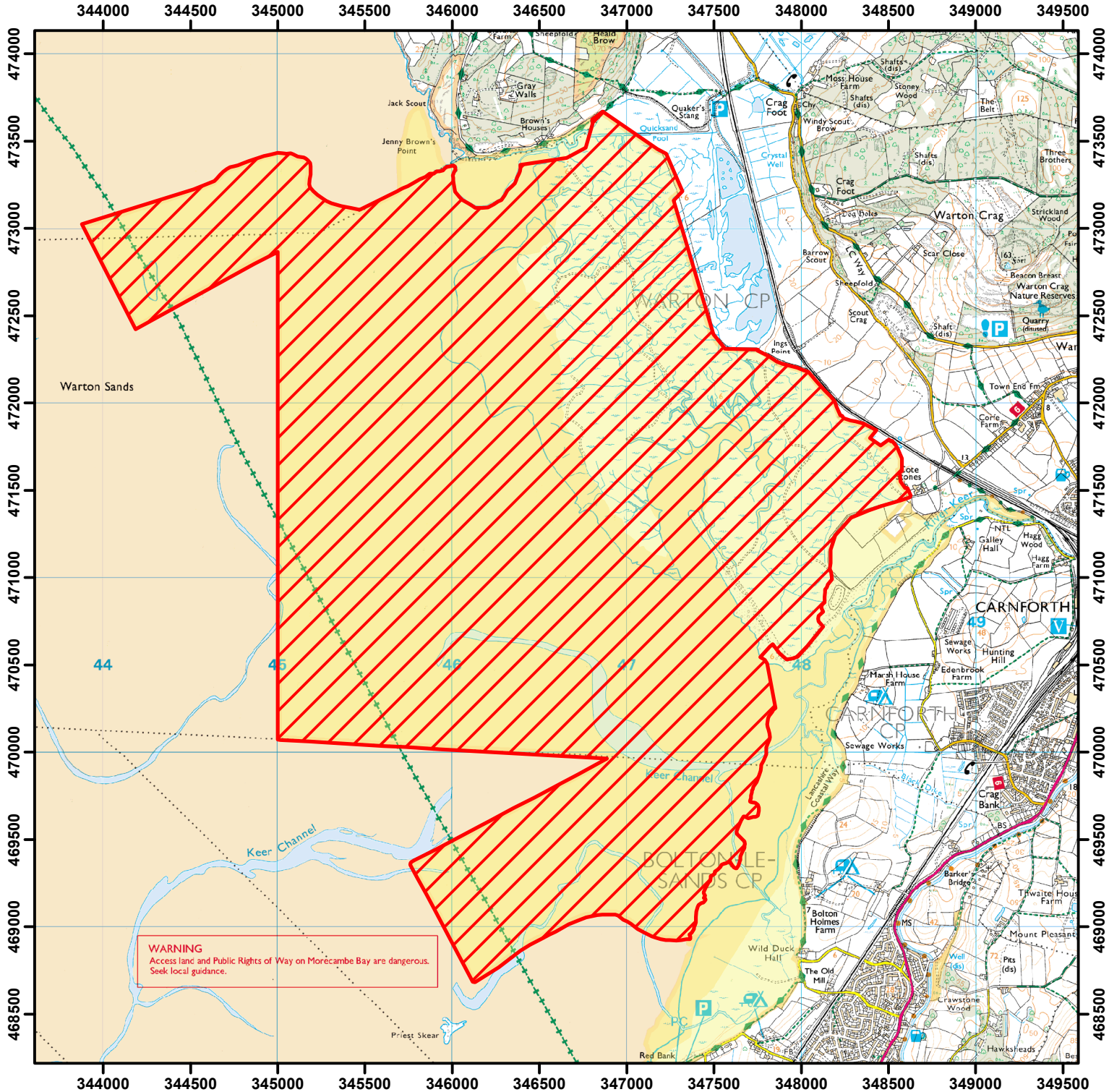
To protect sensitive wildlife, dogs are not allowed on the open access land shown hatched on the map below.

This does not affect public rights of way where dogs must be kept under close control.





Between: 1 November and 31 July until 2020

Case Number: 2009020074



0 250 500 1,000 1,500 2,000 Metres

© Crown Copyright and database right 2014. All rights reserved.  
Ordnance Survey Licence number 100022021.

 **Restricted Open Access Land**  
 **Open Access Land**



For more information call the Open Access Contact Centre on 0845 100 3298  
or visit our website at [www.naturalengland.org.uk/openaccess](http://www.naturalengland.org.uk/openaccess)