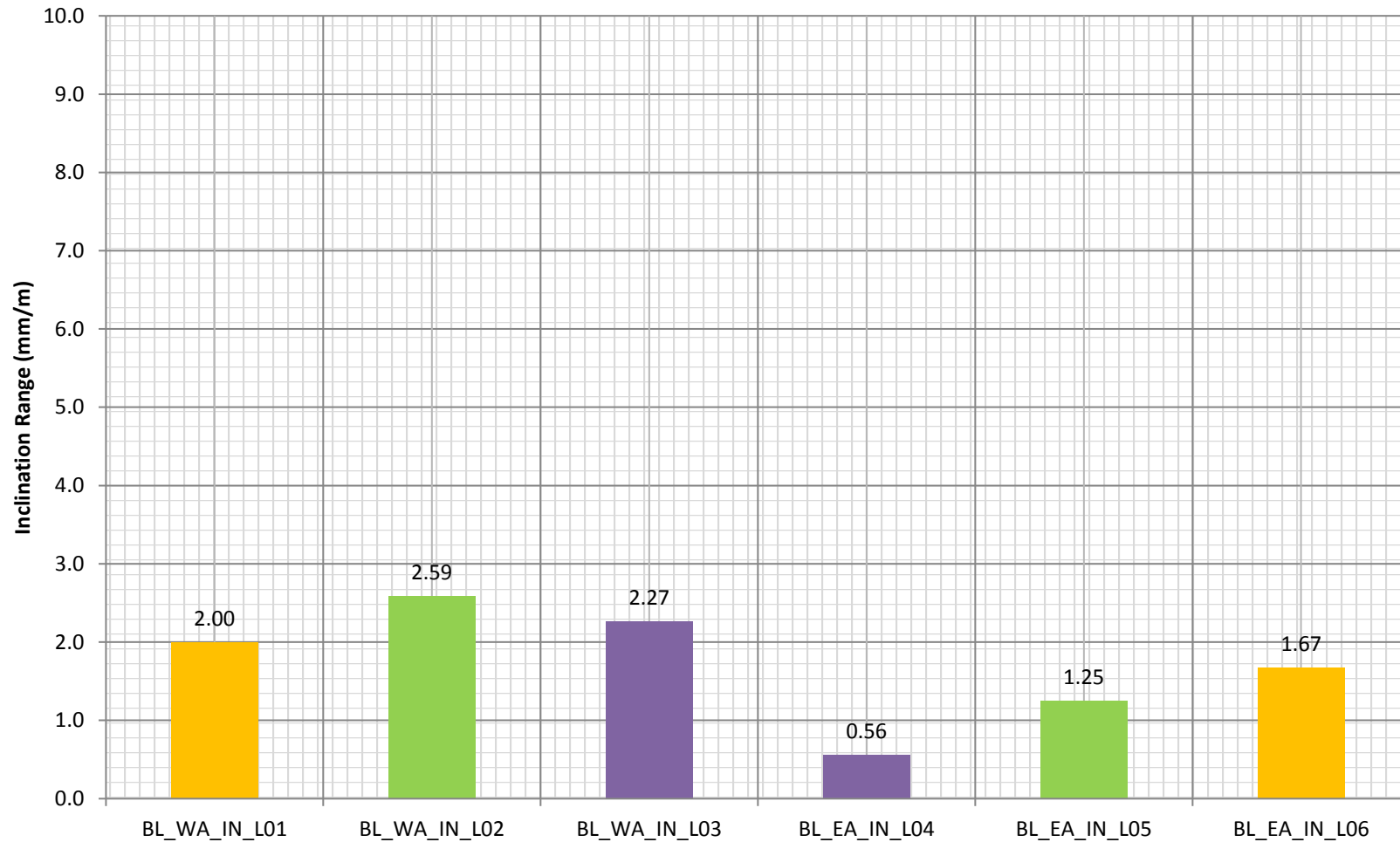


A12 Bury Lane Bridge Monitoring

Abutment - Longitudinal Inclination Overview

Monitoring period commencing:
27/03/2014 16:00



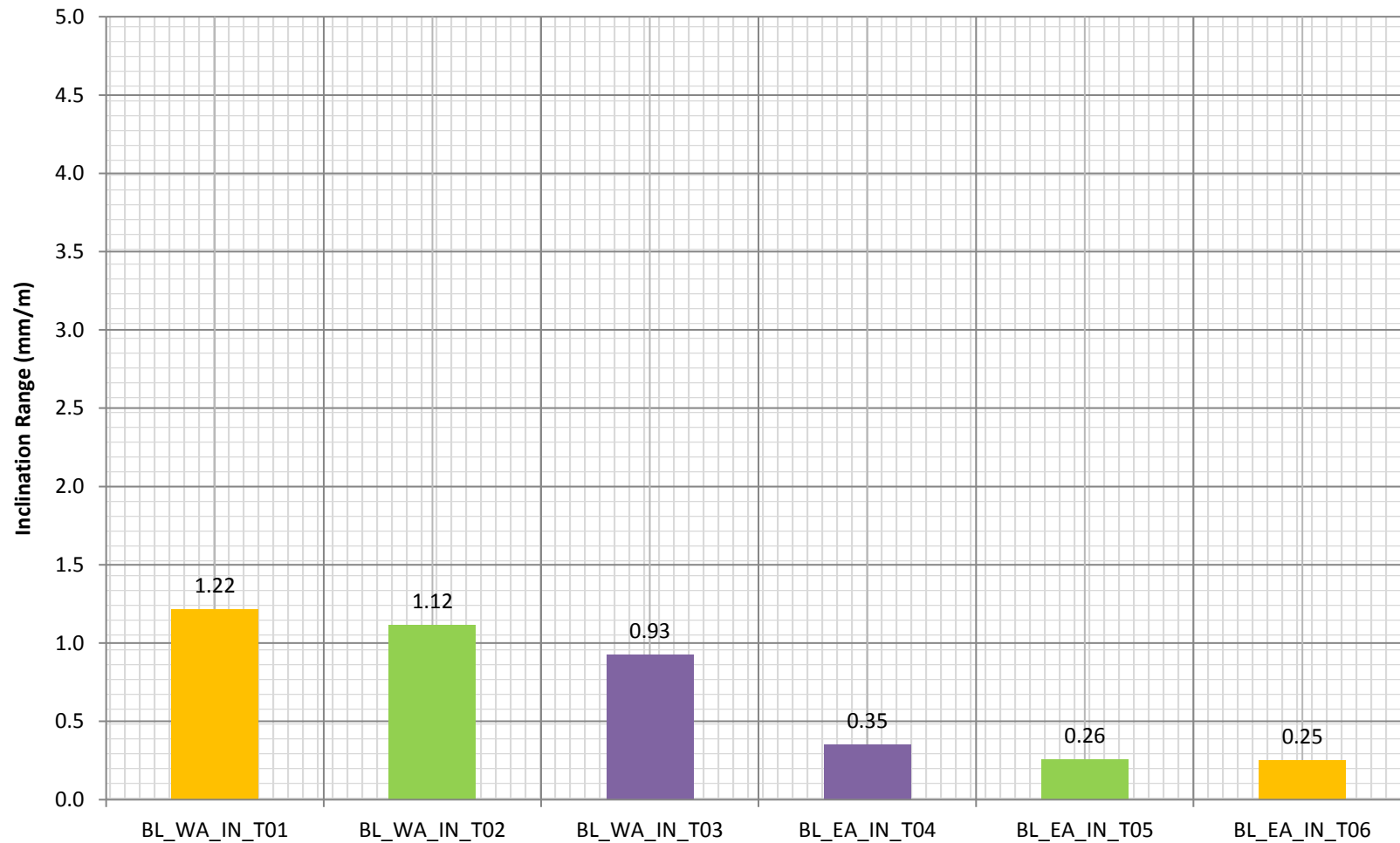
■ South
 ■ Centreline
 ■ North

Please note sensor BL_EA_IN_L06 re-tared at 13:00 21/07/2014.

A12 Bury Lane Bridge Monitoring

Abutment - Transverse Inclination Overview

Monitoring period commencing:
27/03/2014 16:00

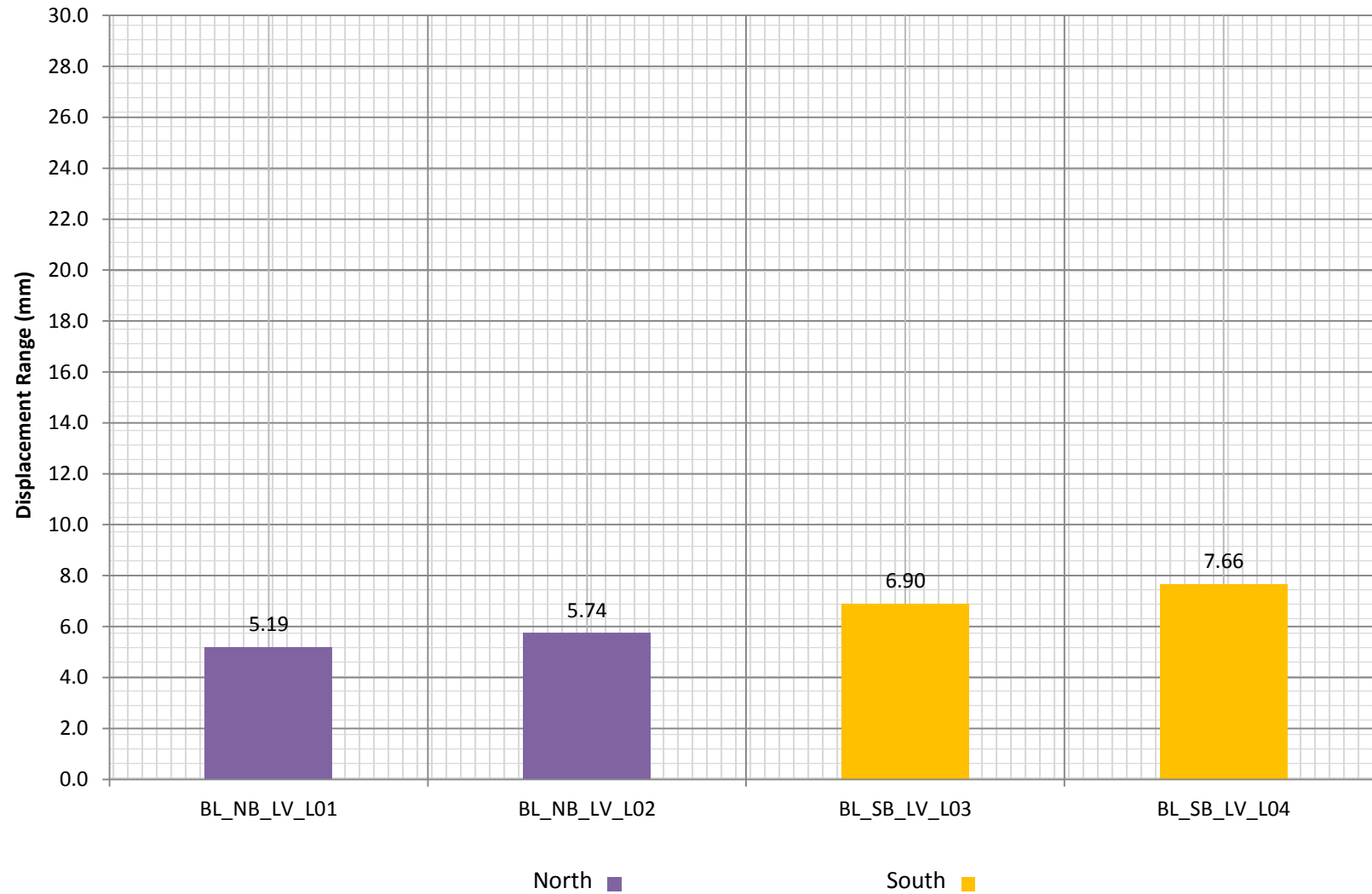


■ South
 ■ Centreline
 ■ North

Please note sensor BL_EA_IN_T06 re-tared at 13:00 21/07/2014.

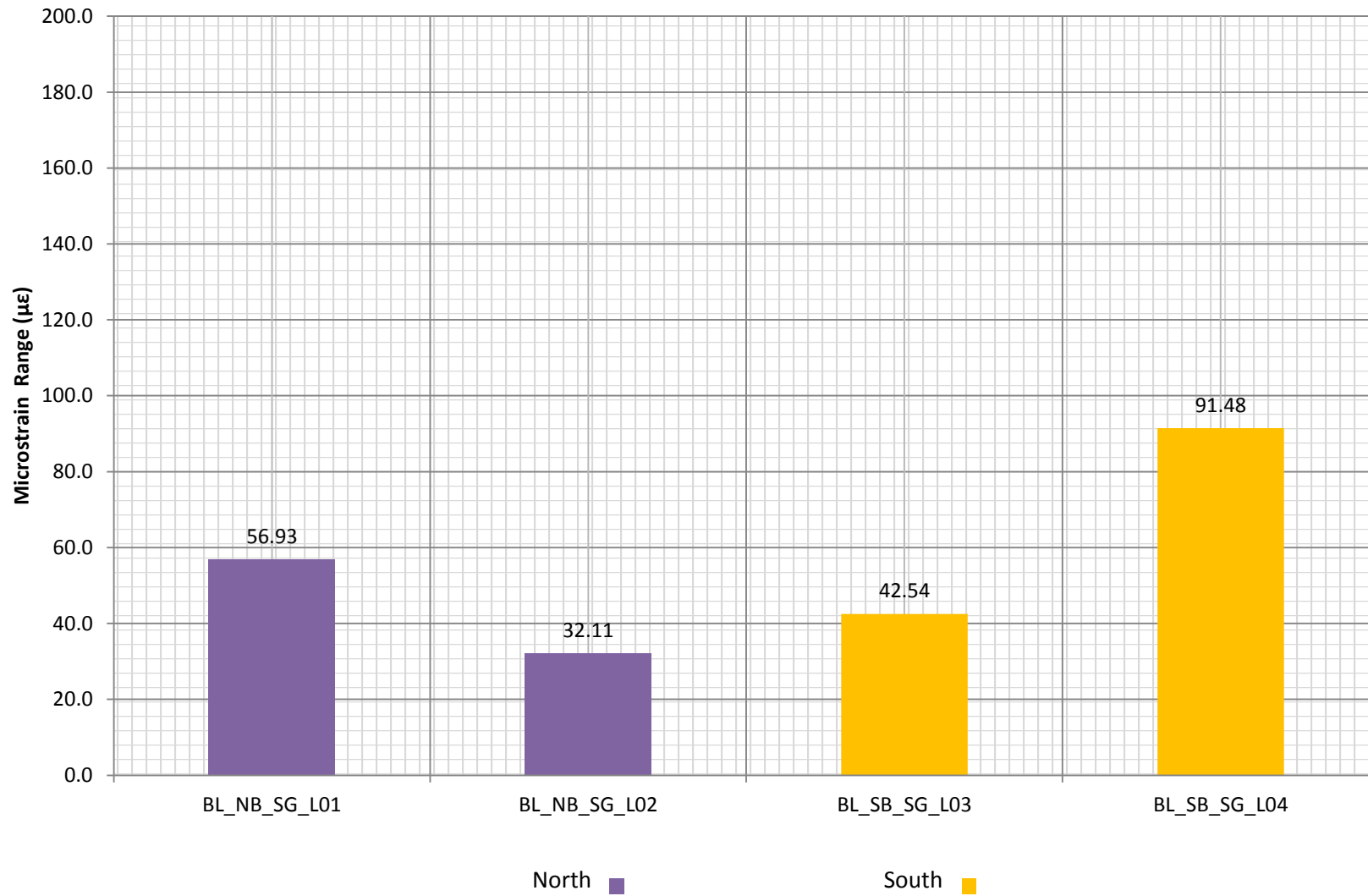
A12 Bury Lane Bridge Monitoring Half Joint - Displacement Overview

Monitoring period commencing:
27/03/2014 16:00



A12 Bury Lane Bridge Monitoring Half Joint - Strain Overview

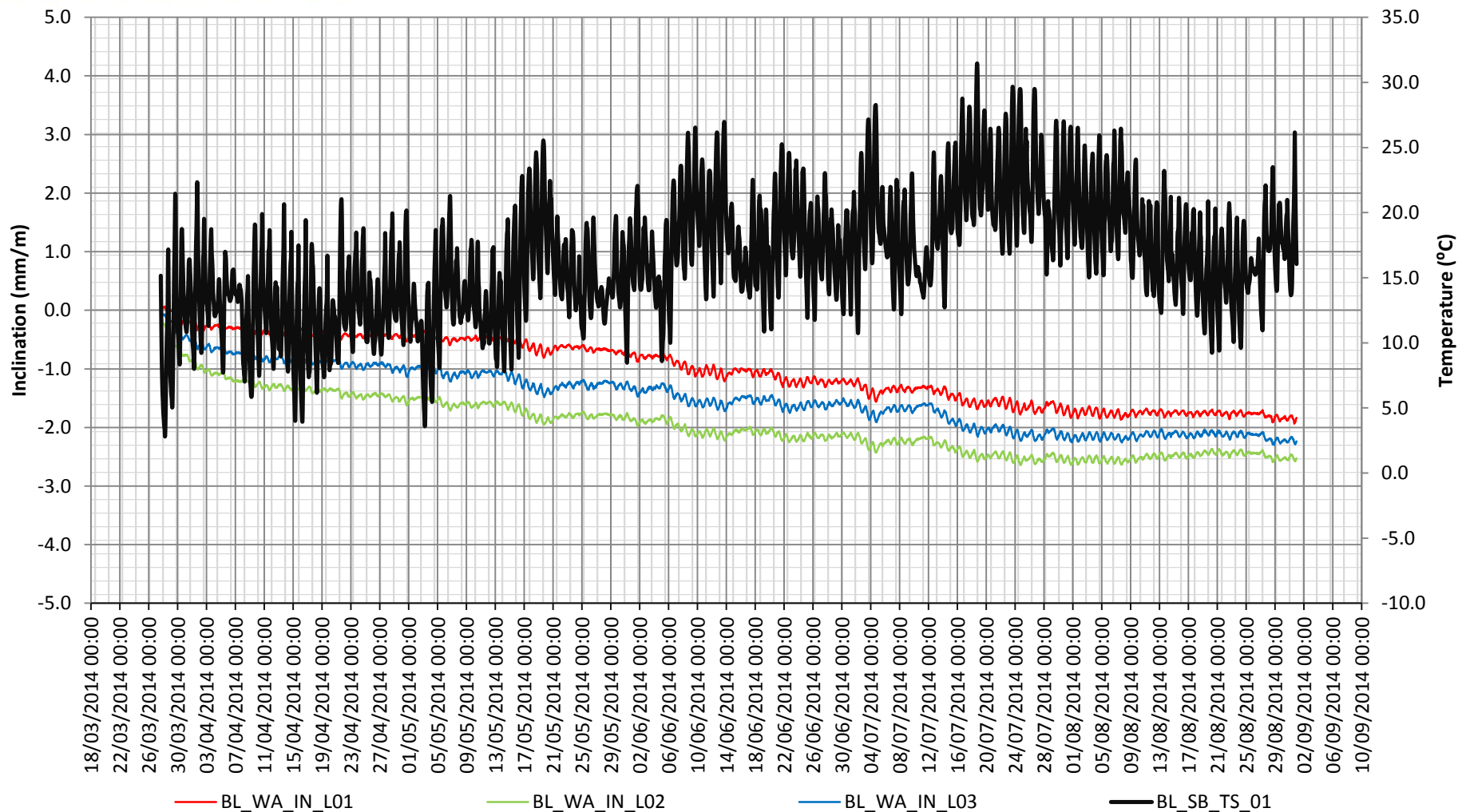
Monitoring period commencing:
27/03/2014 16:00



A12 Bury Lane Bridge Monitoring

West Abutment - Longitudinal Inclination

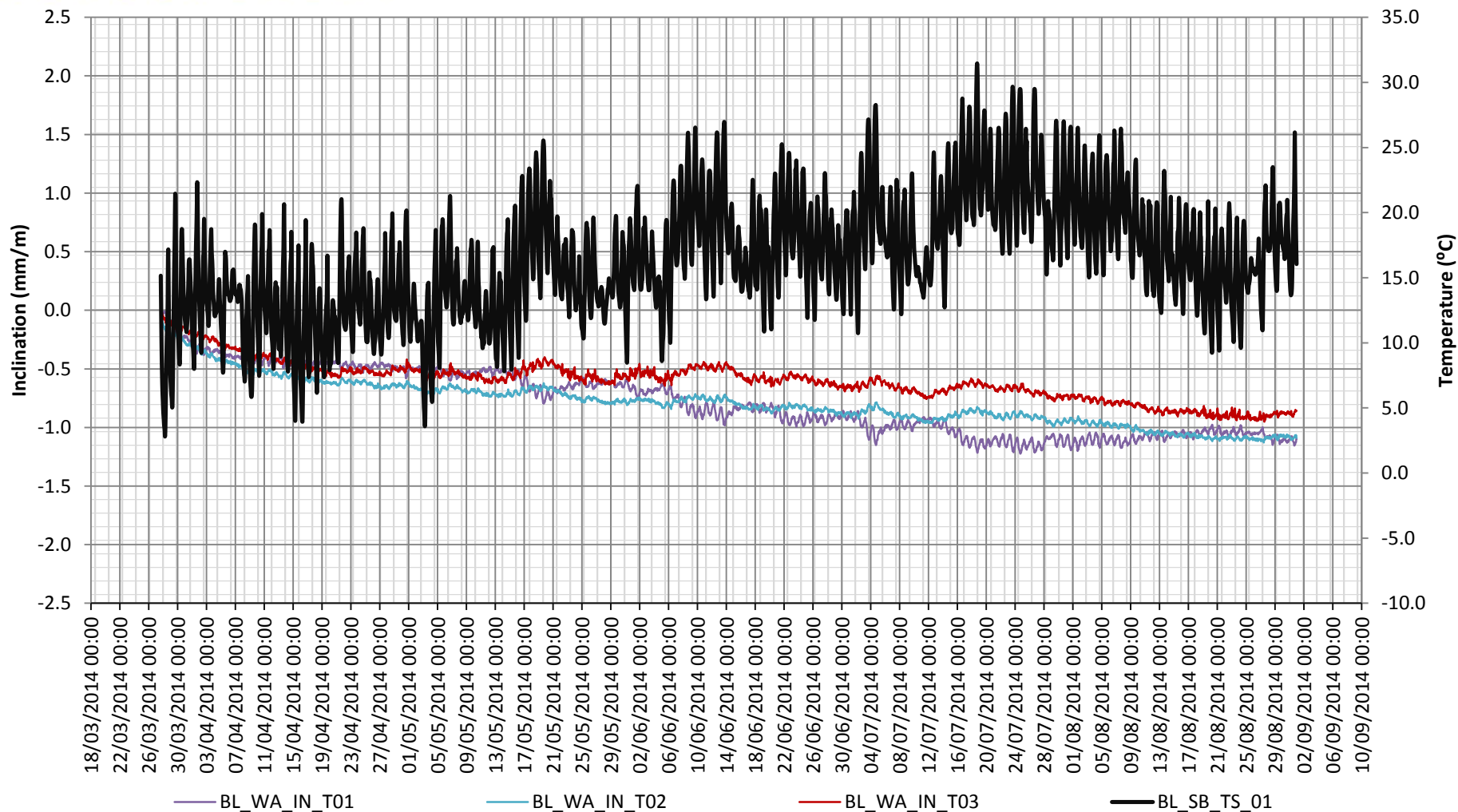
Monitoring period commencing:
27/03/2014 16:00



Note: Positive values indicate movement in the east direction.

A12 Bury Lane Bridge Monitoring West Abutment - Transverse Inclination

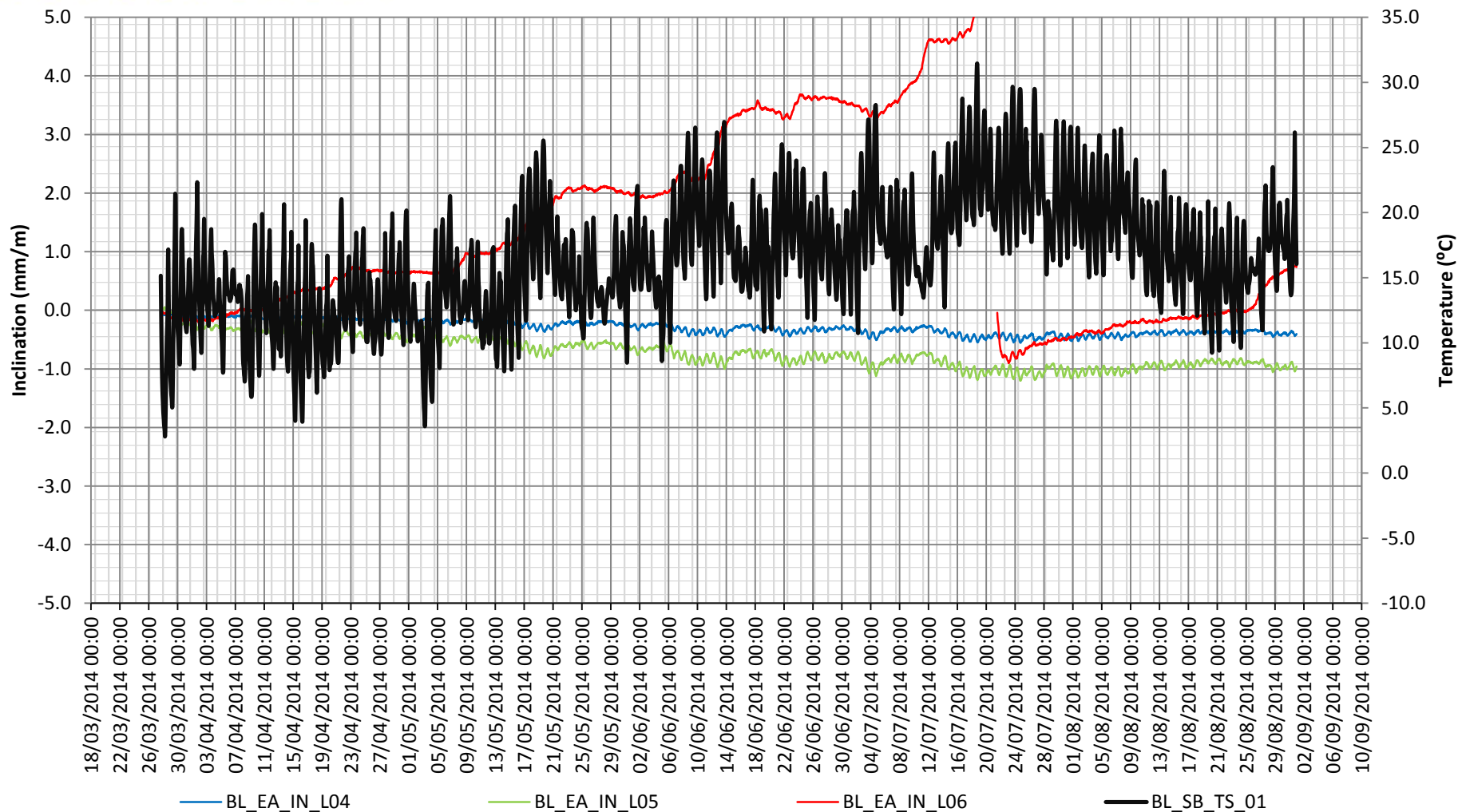
Monitoring period commencing:
27/03/2014 16:00



Note: Positive values indicate movement in the north direction.

A12 Bury Lane Bridge Monitoring East Abutment - Longitudinal Inclination

Monitoring period commencing:
27/03/2014 16:00

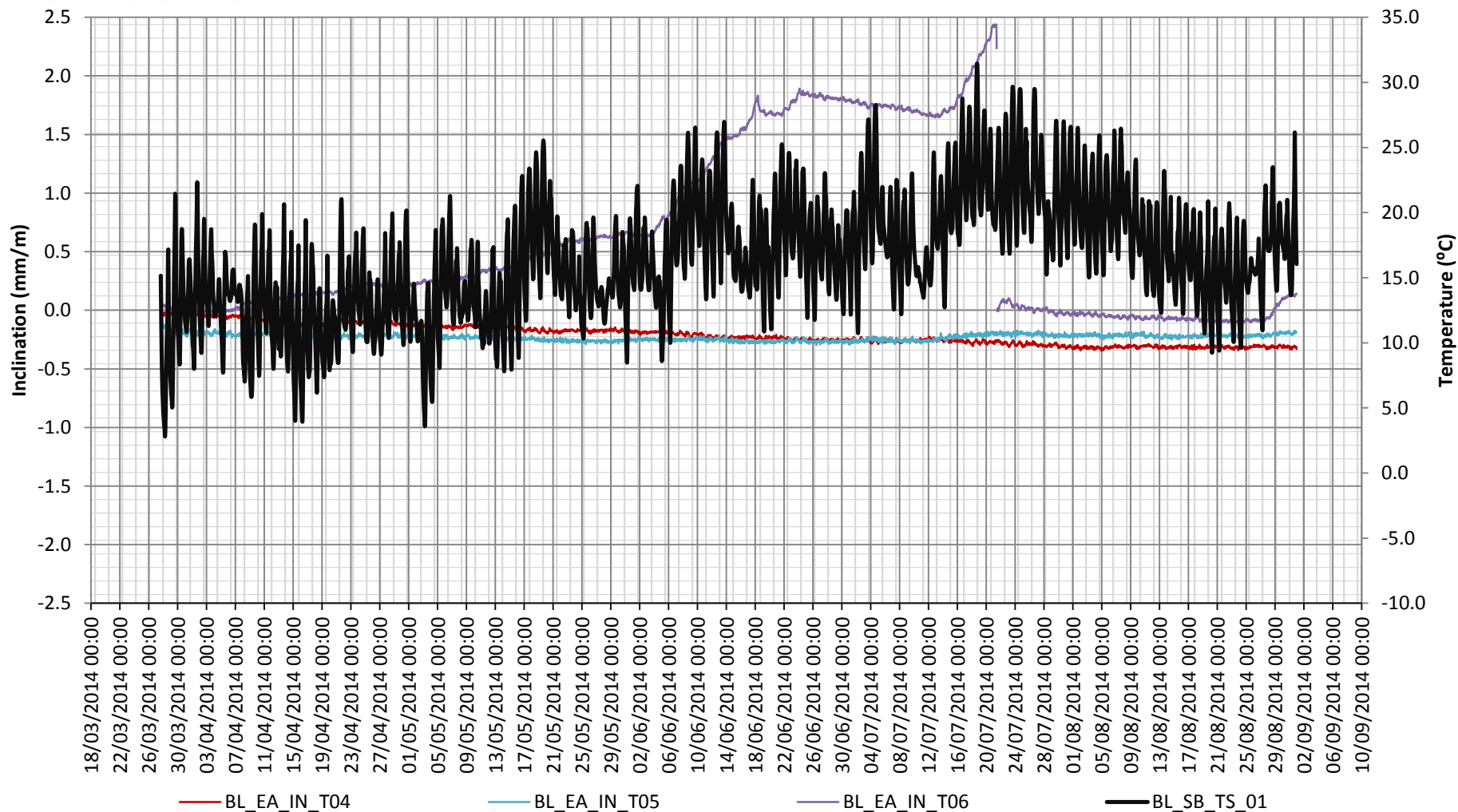


Note: Positive values indicate movement in the west direction.

Please note that substance build up behind sensor BL_EA_IN_L06 was effecting results. The issue was rectified & re-tared at 13:00 21/07/2014.

A12 Bury Lane Bridge Monitoring East Abutment - Transverse Inclination

Monitoring period commencing:
27/03/2014 16:00



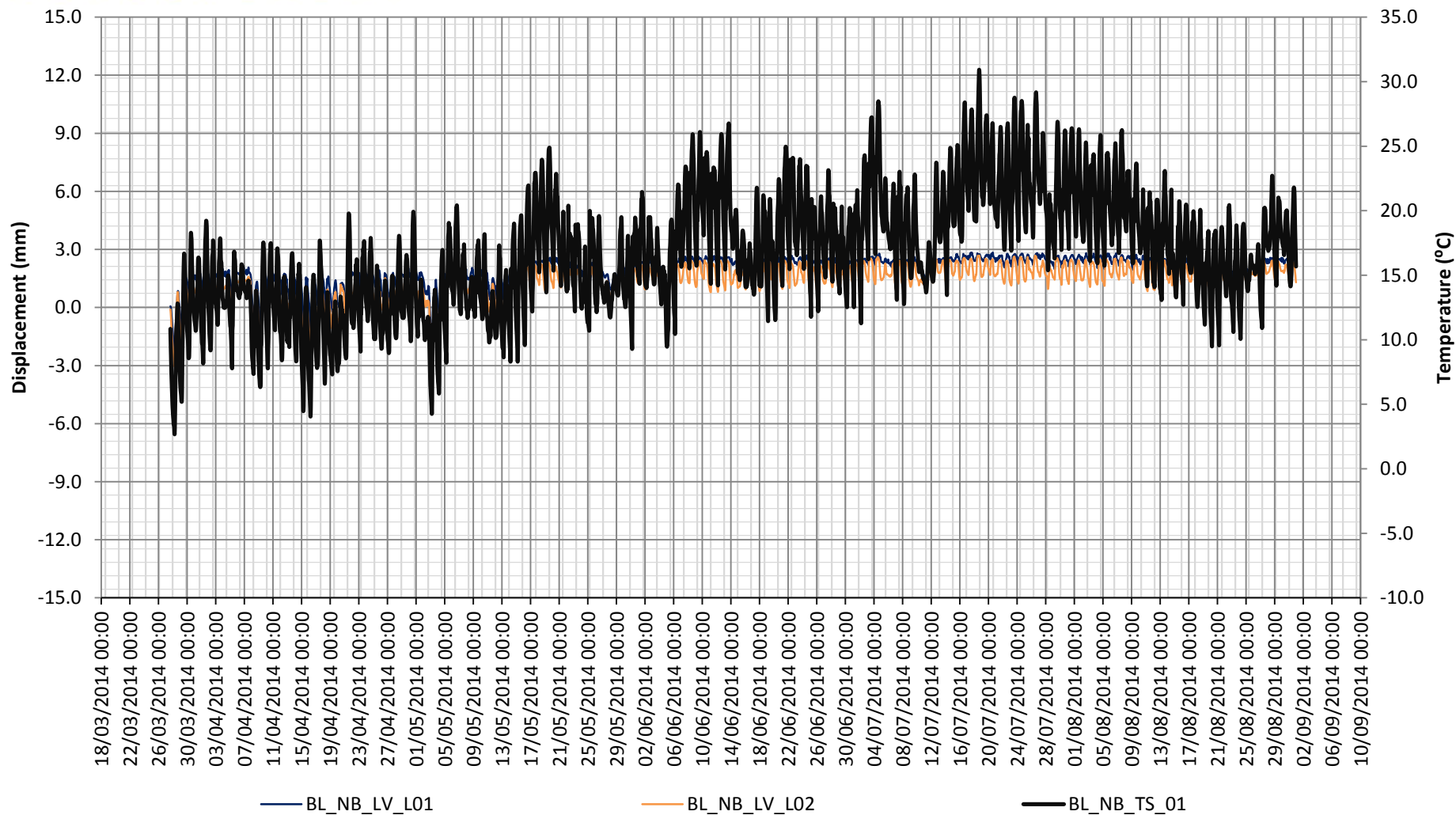
Note: Positive values indicate movement in the south direction.

Please note that substance build up behind sensor BL_EA_IN_T06 was effecting results. The issue was rectified & re-tared at 13:00 21/07/2014.

A12 Bury Lane Bridge Monitoring

Half Joint North Beam - Longitudinal Displacement

Monitoring period commencing:
27/03/2014 16:00

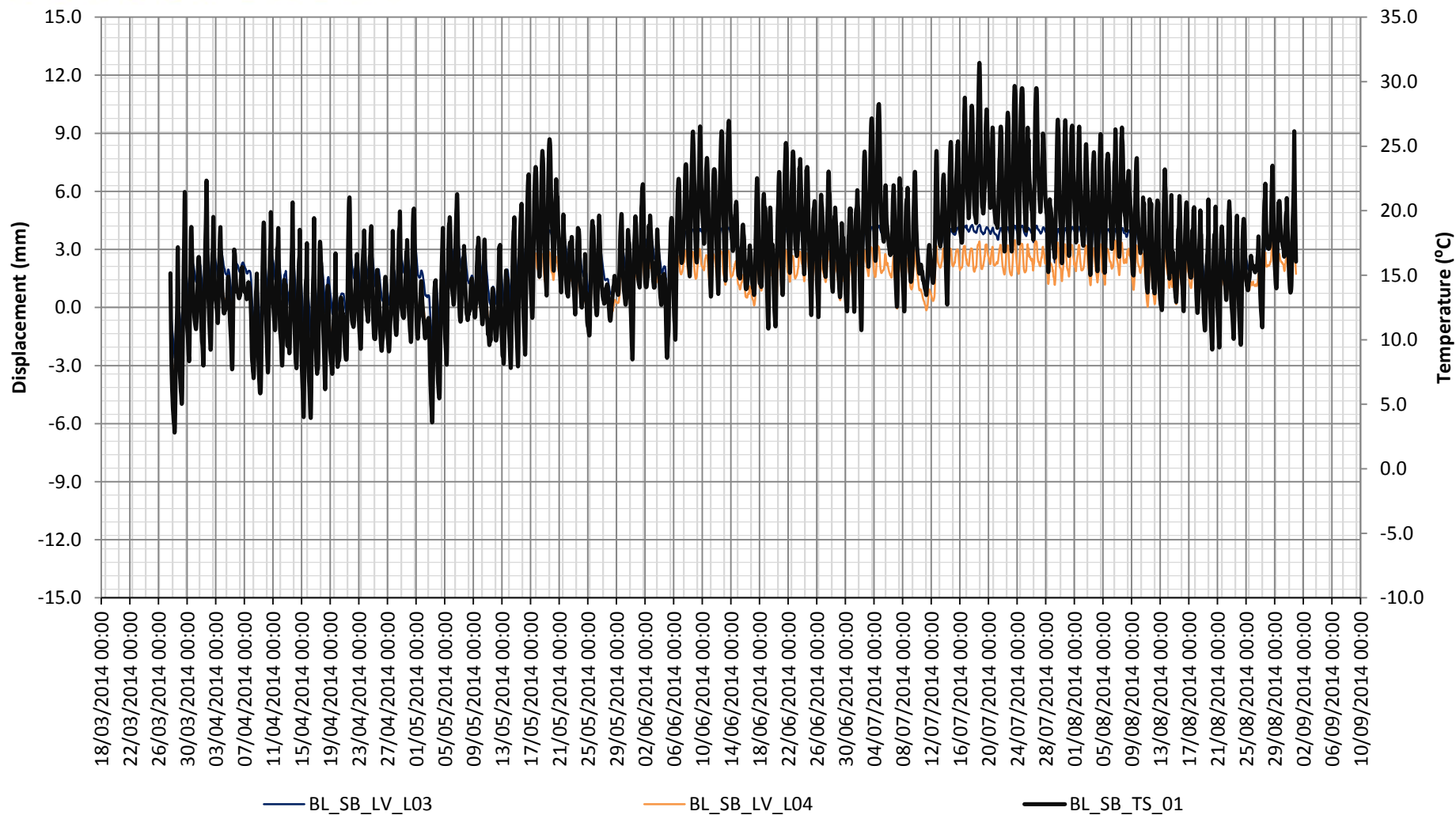


Note: Positive values indicate bridge expansion.

A12 Bury Lane Bridge Monitoring

Half Joint South Beam- Longitudinal Displacement

Monitoring period commencing:
27/03/2014 16:00

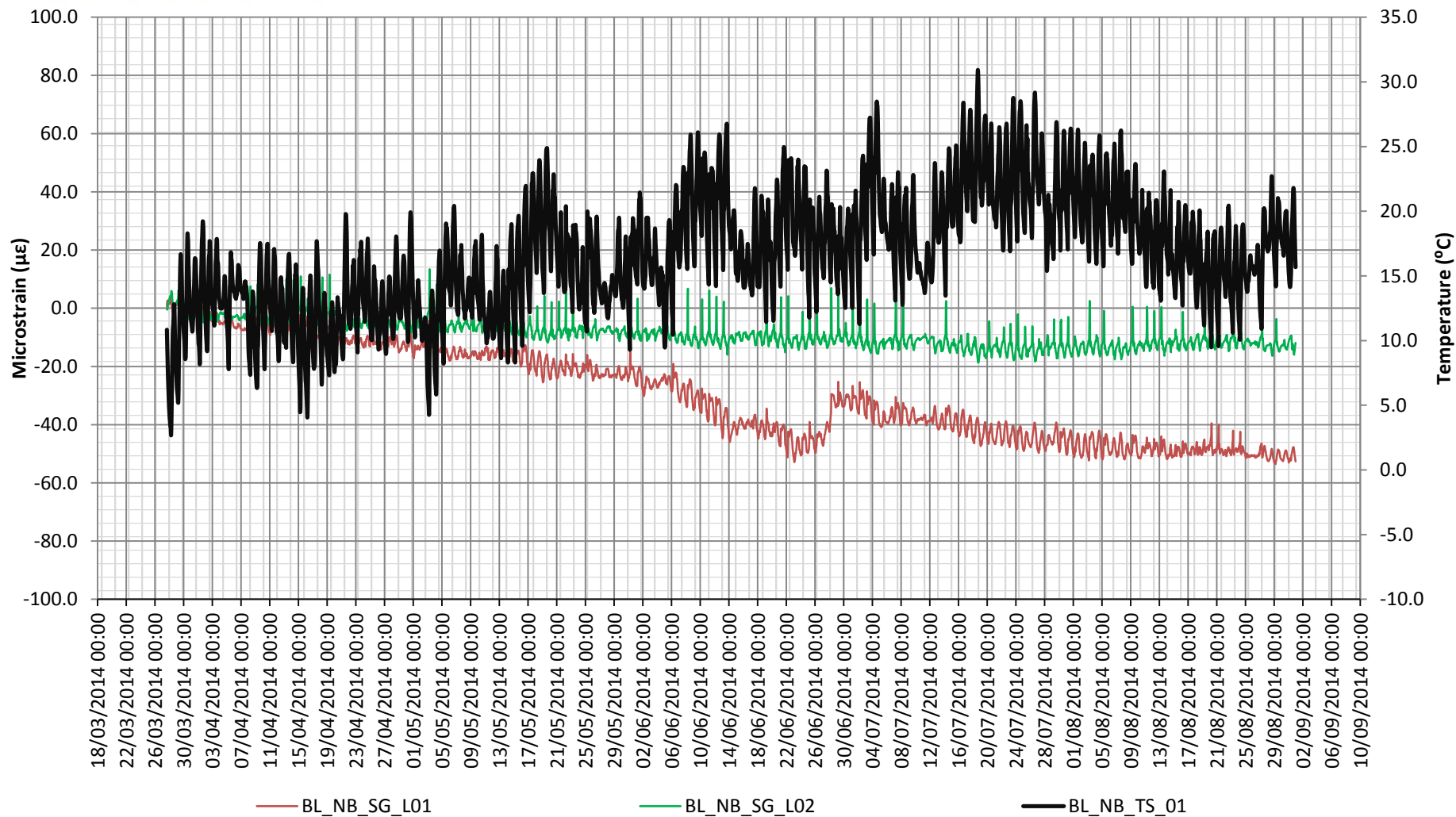


Note: Positive values indicate bridge expansion.

A12 Bury Lane Bridge Monitoring

Half Joint North Beam - Longitudinal Strain

Monitoring period commencing:
27/03/2014 16:00

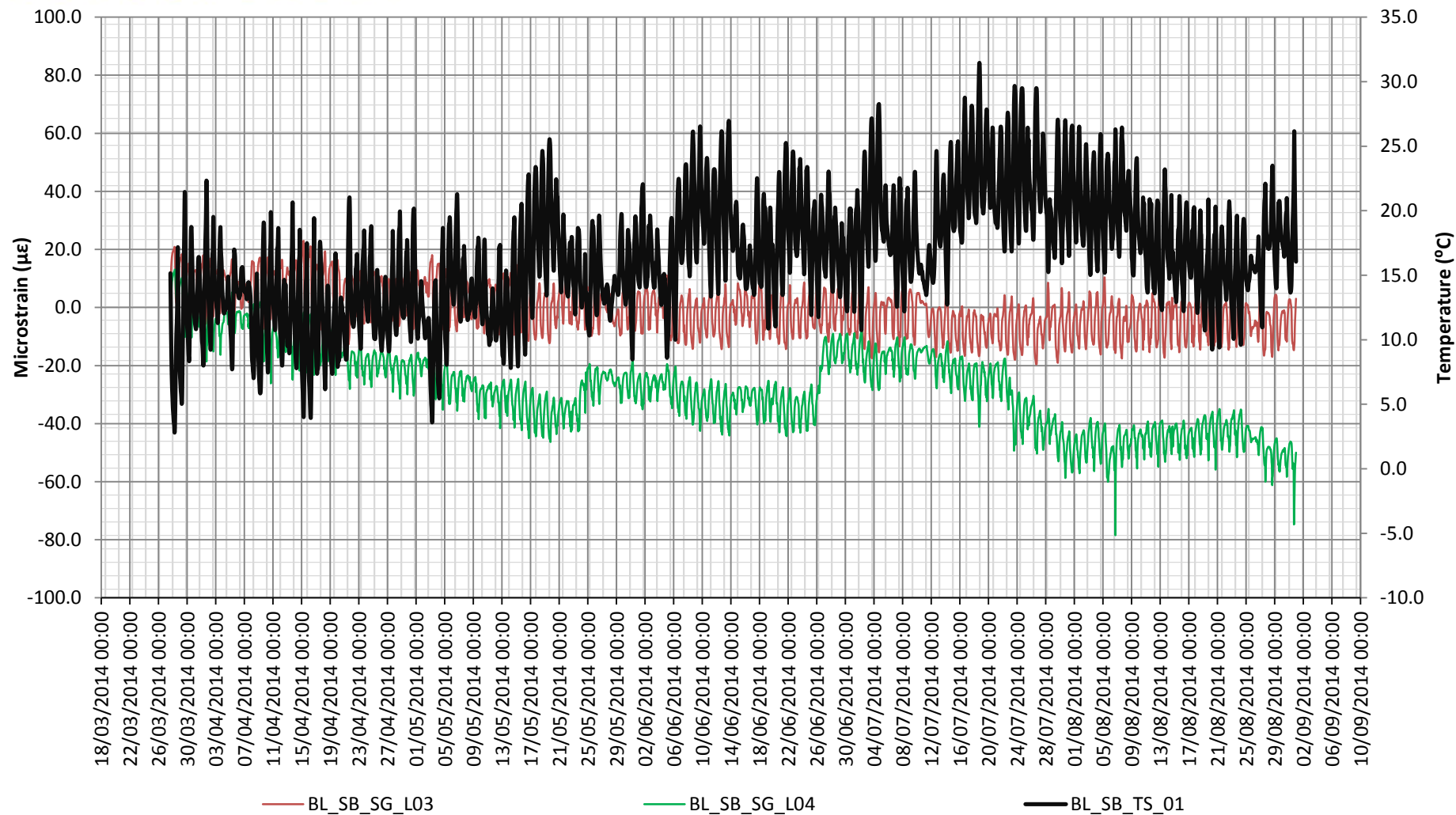


Note: Strain gauge tension positive.

A12 Bury Lane Bridge Monitoring

Half Joint South Beam - Longitudinal Strain

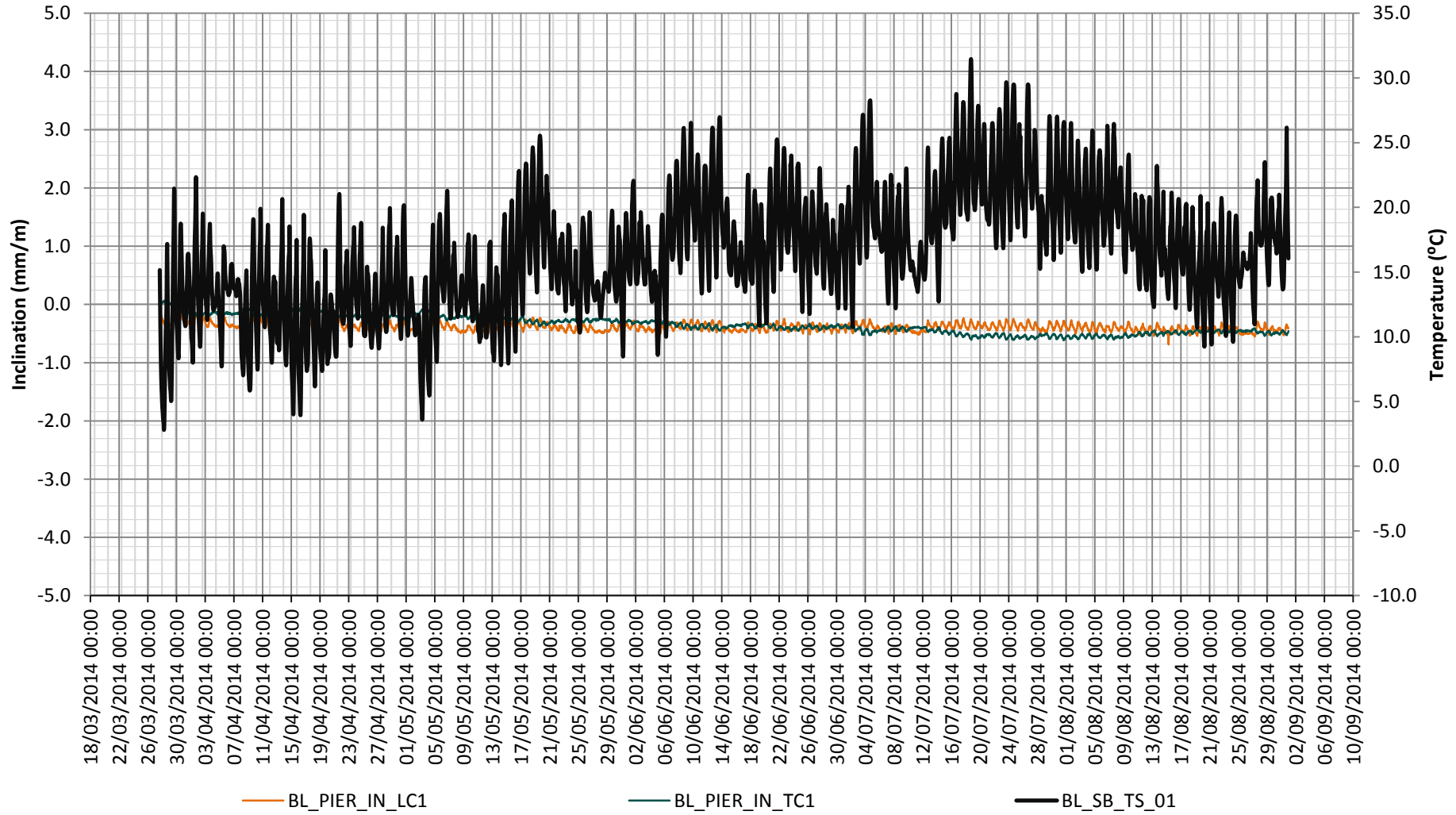
Monitoring period commencing:
27/03/2014 16:00



Note: Strain gauge tension positive.

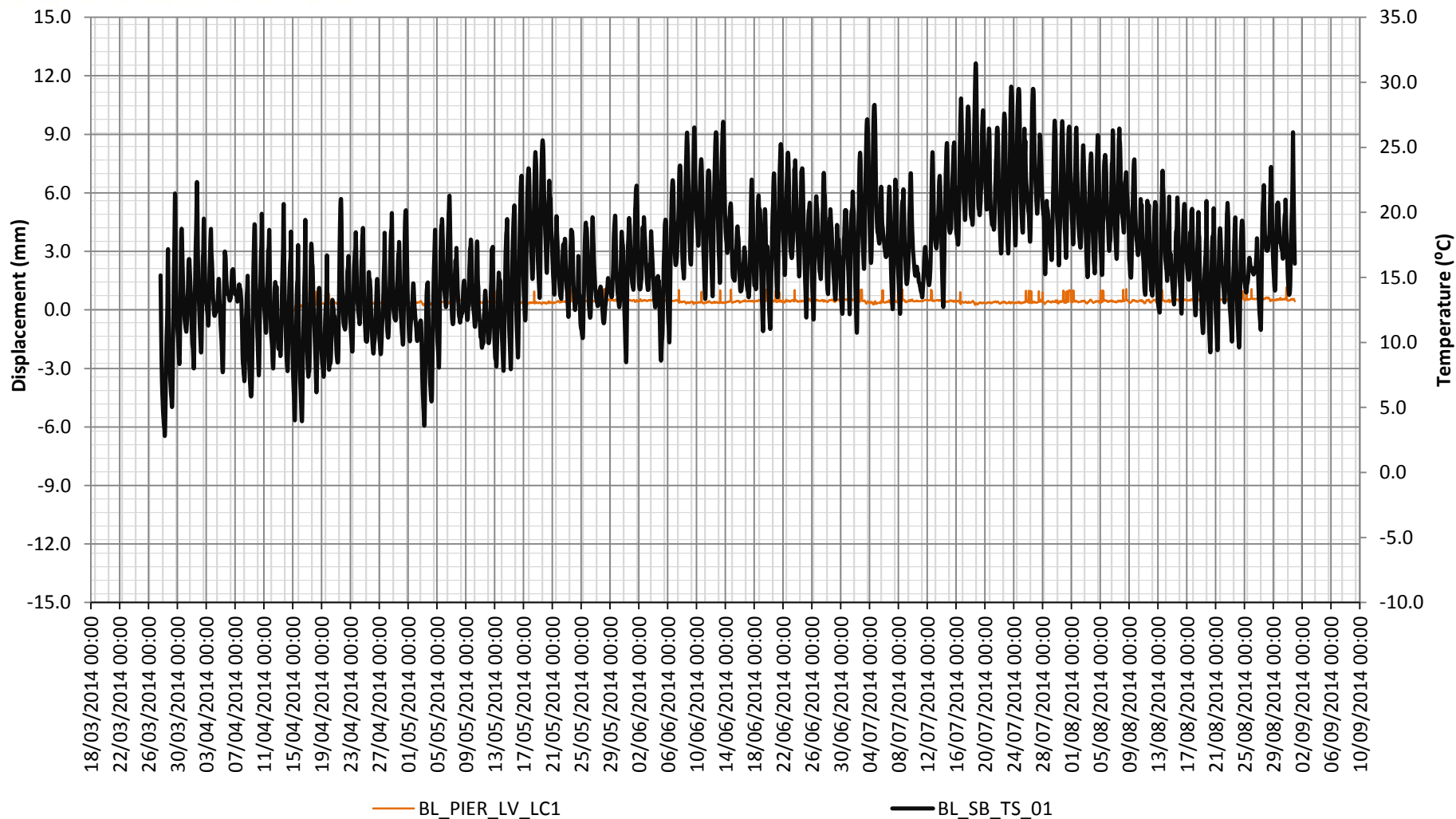
A12 Bury Lane Bridge Monitoring Pier - Control Inclinometer

Monitoring period commencing:
27/03/2014 16:00



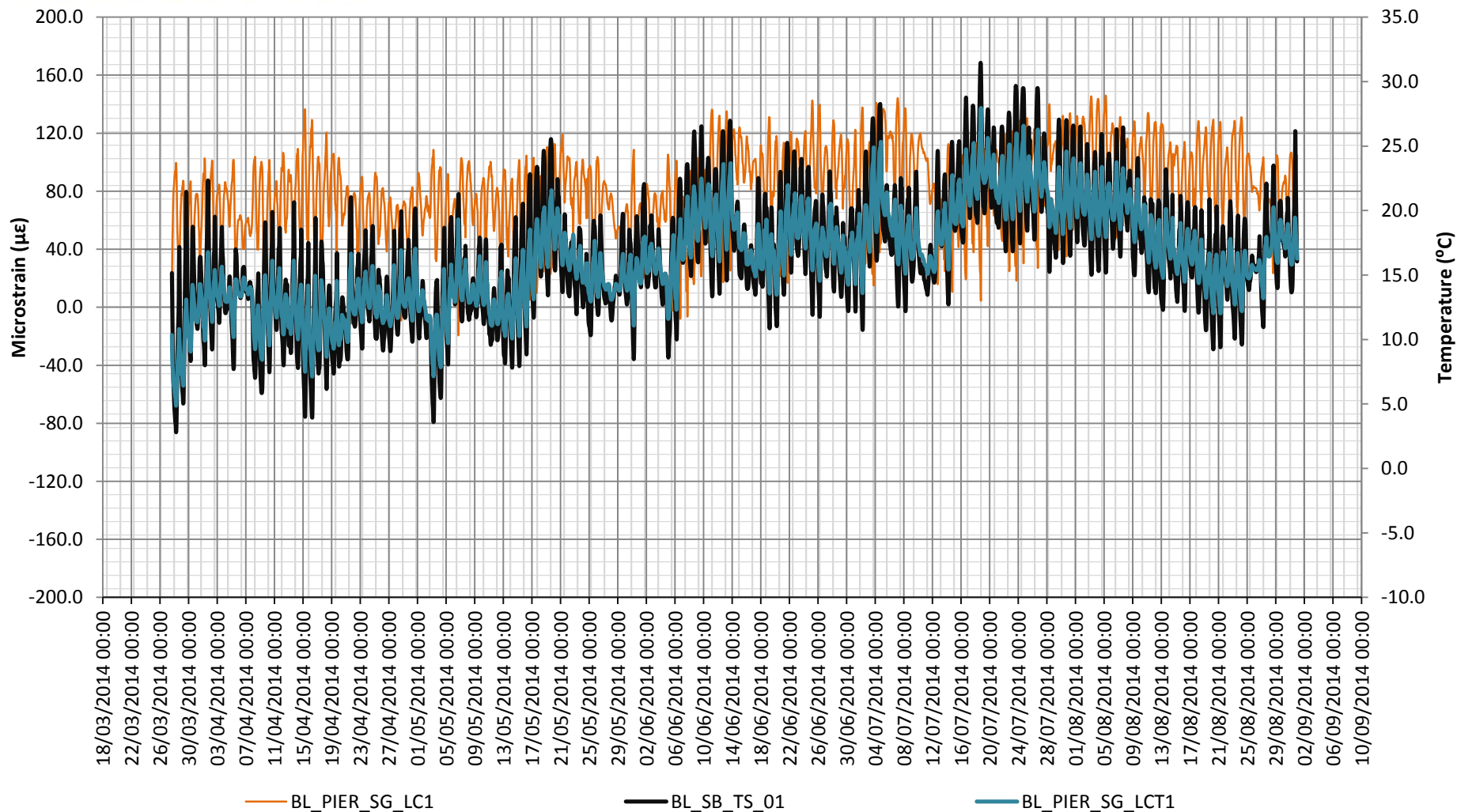
A12 Bury Lane Bridge Monitoring Pier - Control LVDT

Monitoring period commencing:
27/03/2014 16:00



A12 Bury Lane Bridge Monitoring Pier - Control Strain Gauge

Monitoring period commencing:
27/03/2014 16:00



A12 Bury Lane Bridge Monitoring

Steel, Concrete, Air & Strain Gauge Temperatures

Monitoring period commencing: 27/03/2014 16:00

