



**Issue 14 - summer 2014**

**Midlands edition**

## Welcome to AgriBuzz

Welcome to AgriBuzz, our quarterly e-newsletter for farmers and land managers in the Midlands, keeping you up to date with information relevant to your agricultural business.

### In this issue

#### Hot topics

[What's in your back yard? Are you living or working in a drinking water Safeguard Zone?](#)

[Have you checked your weeping wall slurry store? - Act now](#)

[Pesticides – getting the basics right](#)

[Funding available for farmers and landowners in the River Ecclesbourne catchment](#)

#### Events and diary dates

#### Useful websites

#### Contact us



Farmland poppies

## Hot topics



### What's in your back yard? Are you living or working in a drinking water Safeguard Zone?

We are encouraging farmers and land managers to use our [What's In Your Back Yard](#) (WIYBY) interactive maps to find out if you are living or working in a drinking water Safeguard Zone. These maps were updated in June 2014.

In order to provide water for people to drink we must take (or abstract) water from reservoirs, rivers and the ground (known as groundwater). Where necessary this water undergoes treatment so it is safe to drink. Under the [Water Framework Directive](#) (WFD) we must protect drinking water sources and prevent the need for any extra treatment beyond current levels. Safeguard Zones are any water sources that are at risk of deterioration which would result in the need for additional treatment. These are non-statutory zones where action is targeted to address pollution so that extra treatment can be avoided.

If you live or work in a Safeguard Zone it is important that you take extra care when using any of the substances listed as 'at risk' on the Safeguard Zone maps. If they pollute the water then additional treatment may be necessary. If you do use these substances, information on measures to reduce the risk can be obtained by [emailing us](#) or contacting your local water company. For pesticides, [getting the basics right](#) is crucial, additional advice and information sheets are available from the [Voluntary Initiative](#). If you are not in a Safeguard Zone it doesn't mean that your surface or groundwater catchments are not used for drinking water. Therefore you must still follow [best practice guidance](#) to ensure they are not polluted and do not deteriorate.

**Did you know** - you can also use [WIYBY](#) to check if you are at risk of flooding.



### Have you checked your weeping wall slurry store? - Act now

A recent incident has highlighted the need for farmers to check and maintain their weeping wall slurry stores.

At a farm in Derbyshire on 2 June 2014 a section of a weeping wall slurry store gave way, releasing approximately 500 cubic metres of cow slurry. This spread across an adjacent yard and into a small watercourse nearby. Swift action by the farmer and Environment Agency staff prevented serious pollution of the watercourse. The farmer immediately placed a large bale of straw in the stream and called the Environment Agency. The bale of straw blocked up the stream, preventing the slurry from spreading further downstream.



Before the clean up



Straw barrier preventing slurry spreading downstream



After the clean up



Within the hour a prompt clean up was underway by the farmer and contractors. The Environment Agency attended and installed pumps which diverted clean water from the stream away from the spillage and irrigated some of the polluted water onto a nearby field.

The following morning the clean up was complete and our monitoring showed no impact on water quality in the stream just a few metres downstream of the spillage or the larger watercourse further downstream.

This incident was caused by the failure of one of the concrete access panels used to seal the unloading area. The lowest panel had a horizontal slot in it to allow liquid to drain from the store. This panel gave way, likely weakened due to corrosion from prolonged exposure to slurry.



Failed concrete access panel

Please check your weeping wall slurry stores regularly including the condition of the access panels, particularly those with drainage slots.  
In the event of any spillage of slurry please call our Incident Hotline: 0800 80 70 60.



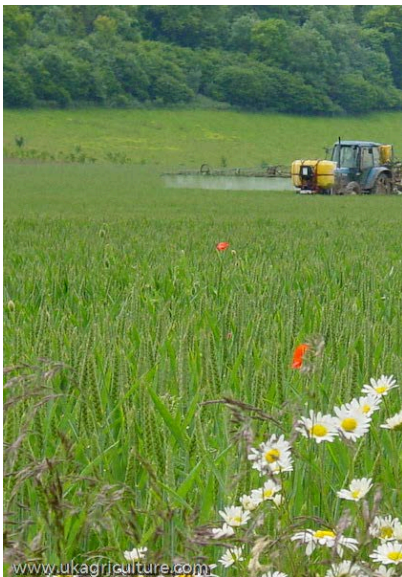
pesticides



soils

### Pesticides – getting the basics right

Levels of pesticides above the limit have been detected in some UK surface waters and groundwaters. Action is needed now. Responsible pesticide use means getting the [basics right](#) all the time.



Fungicide application to wheat crop with wildflower margins

Protect all watercourses with 6m grass buffer strips or 5m no spray/spread buffer zones.
Manage soils to avoid erosion and run off.
Ensure all pesticide applications (sprays and pellets) are made by trained and qualified staff.
Ensure filling and container cleaning takes place well away from drains and watercourses.
Calibrate sprayer and regularly check for leaks or drips.
Do not apply pesticides to dry, cracked or saturated soils.
Do not apply pesticides if heavy rain is expected within 48 hours of application.
Apply pesticides with care. Do not overspray water courses.
Clean application equipment over a lined biobed or in the field away from watercourses and drains.
If in doubt, check it out. Consult with a BASIS registered agronomist.

Further information is available from the [Voluntary Initiative](#).



## Funding available for farmers and landowners in the River Ecclesbourne catchment

Farmers and landowners with land next to, or tributaries that feed into the River Ecclesbourne may be eligible for contributory funding of up to £1,000 per holding to assist with any work that may be needed.

The Environment Agency has been working in partnership with farmers and landowners in the River Ecclesbourne catchment (Wirksworth to Duffield, Derbyshire) to help improve water quality by reducing sources of diffuse pollution from agriculture.

The work has been carried out under the Ecclesbourne Restoration Partnership, which developed a Catchment Plan in 2011 to show how it could improve the water quality and biodiversity in the river and increase awareness of the river and its wider environment.

The Environment Agency is working with Severn Trent Water, as well as other partners, with a focus on tackling diffuse pollution. A Farming Working Group has also been established which includes representatives from the Derbyshire Wildlife Trust, Natural England and the National Farmers' Union, to focus on addressing agricultural diffuse pollution sources, for example land run off following rainfall which could contain sediment and phosphates; poaching of river banks by livestock, where they access or cross the water and maintenance of land drains and ditches.

Following engagement with farmers and landowners in the area, funding has successfully been obtained by the Environment Agency to contribute to works to reduce these sources of diffuse pollution.

The Environment Agency is providing advice on ways to reduce the amount of phosphate and sediment entering the water and it has helped fund the purchase of a water trough for a dairy farmer whose only source of water for his cows was direct from the river. Other projects include fencing off sections of the river, putting in drinking points and piloting pasture pumps. Restricting stock access to the river, providing alternative drinking water supplies and better land management will contribute to improving the river water quality for wildlife and their habitats.

For more information on our work, or on funding opportunities contact [Margaret Baile](#) - Environment Agency.



Cattle drinking point installed on River Ecclesbourne at Duffield

## Events and diary dates

Event	Date(s)
<a href="#">Pollinators Alongside Productive Land Events</a> A series of free farm walks to answer your questions on EFA's, CFE and ELS which aim to improve your knowledge of managing key habitats. Speakers will include representatives from; Farming Advice Service, Campaign for Farmed Environment (CFE) and Kings Conservation Crops. BASIS and NRoSo points available. Refreshments provided. To book your place please contact Fay Parker by <a href="#">email</a> or on 01636 676 107.	8 July 2014 - 10.00am - 12.30pm Buckminster Estate, Buckminster, Grantham, NG33 5SD  9 July 2014 - 2.00pm - 4.30pm The Grange, Mears Ashby, NN6 0EA
<a href="#">NSA Sheep Event</a> The sectors biannual event. Including trade stands and exhibitors, seminars, workshops, demonstrations and drop-in-clinics.	30 July 2014 Malvern, Worcestershire
<a href="#">UK Dairy Day</a>	17 September 2014

A new business event for the dairy industry, including over 170 exhibitors and seminars.	International Centre, Telford
<a href="#">Soil Association Farm Walks</a> A series of free farm walks for all farmers and growers, organic and non-organic, covering a broad spectrum of enterprises with the aim of sharing knowledge, innovation and experience. Booking essential.	9 July 2014 Manor Farm, Long Whatton, Loughborough  16 July 2014 The Hollies, Souldon Wem, Shropshire  14 August 2014 Wortley Hall, Wortley, South Yorkshire
AgriBuzz - Autumn Issue Please <a href="#">email us</a> with any content ideas, stories or photos.	October 2014

## Useful websites

<a href="#">GOV.UK - Agriculture</a>	Relevant information covering the whole sector.
<a href="#">GOV.UK - Publications catalogue</a>	Download the current and previous issues of AgriBuzz as a PDF document. Search for 'AgriBuzz' as the publications title.
<a href="#">Environment Agency – What's in your back yard?</a>	Use our interactive maps to find out more about the environment where you live. Including proposed NVZ designation, aquifer designation, groundwater source protection zones, flood maps and river quality.
<a href="#">GOV.UK - waste exemption guidance</a>	This page helps you look up which exemptions you need to register for activities carried out on farms.
<a href="#">Campaign for the farmed environment</a>	An industry wide campaign that recognises the importance of managing the farmed environment voluntarily. Including how to take part, online record and advice area.
<a href="#">Farming advice service</a>	Provides advice on subjects including; cross compliance, nutrient management, climate change adaptation and mitigation, to help you improve the economic and environmental performance of your farm.
<a href="#">Voluntary Initiative</a>	Relevant advice and guidance from a programme developed to minimise the environmental impacts from pesticides.
<a href="#">GOV.UK - NVZ</a>	NVZ guidance and information. Including access to the leaflets and publications, and the regional boundary maps.

## Contact us

Please [email us](#) if you need any information or advice, or have any feedback or ideas for the next issue of the AgriBuzz. Alternatively call the customer service line: 03708 506 506 quoting 'AgriBuzz'.

Please feel free to circulate this information to anyone who you think may benefit.  
To subscribe to, or unsubscribe from this newsletter please click the buttons below:

[subscribe](#)

[unsubscribe](#)

**Customer service line: 03708 506 506**

**Incident hotline: 0800 80 70 60**

[agriculture.midseast@environment-agency.gov.uk](mailto:agriculture.midseast@environment-agency.gov.uk)