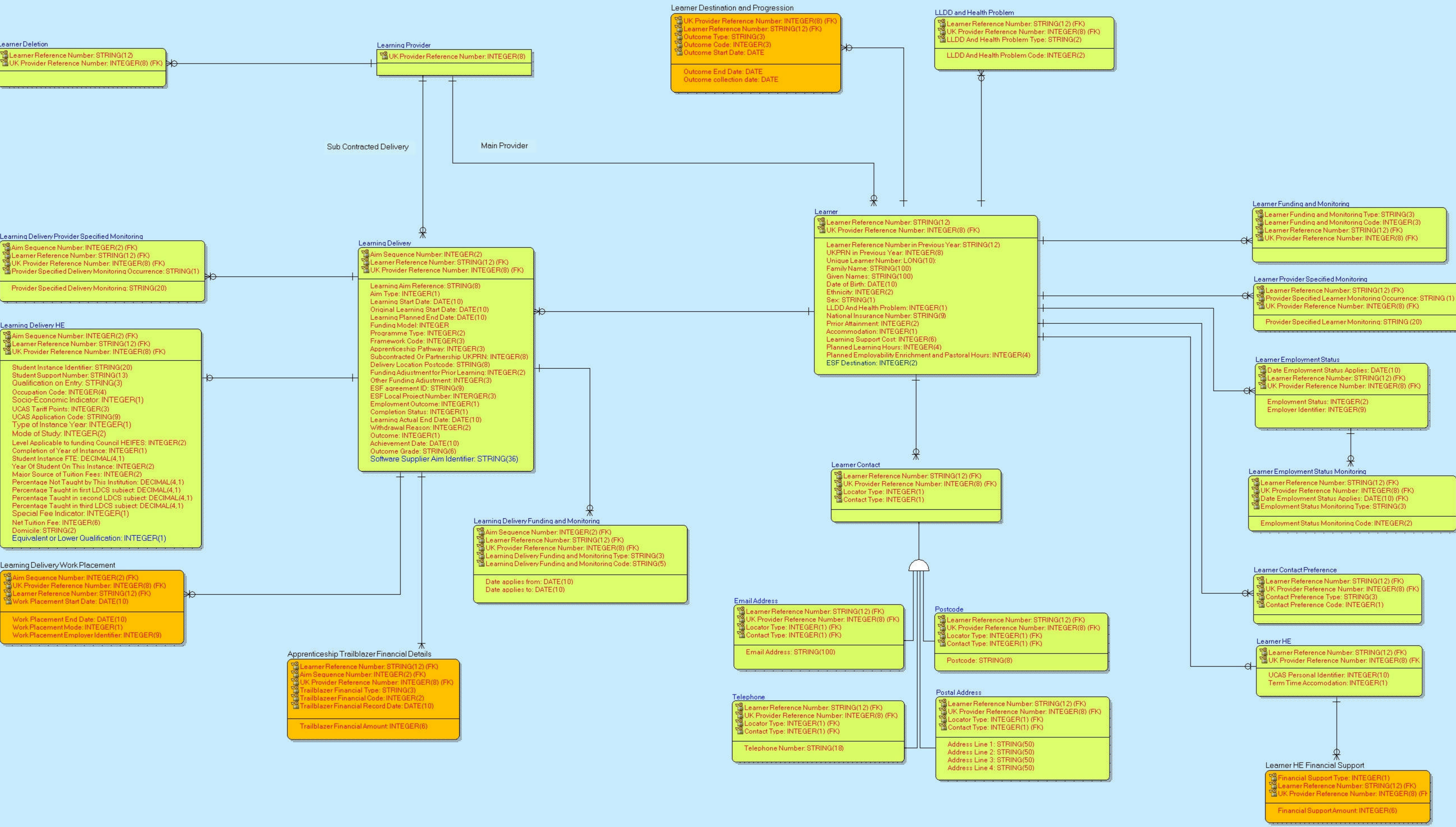


Name: ILR Logical Data Model 2014 to 2015
 Author: Skills Funding Agency
 Created: 20/06/14
 Version: 1
 -New fields are highlighted in blue
 -New entities are in orange



Note: This data model is a logical representation of the ILR. At the implementation level the Learner's Destination and Progression entity is not linked to the Learner entity. Please see the ILR specification for 2014/15 for details of the XML file format requirements.