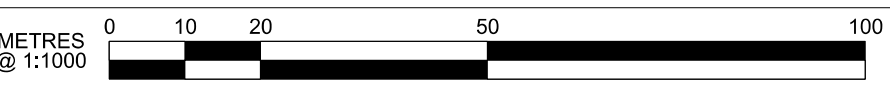
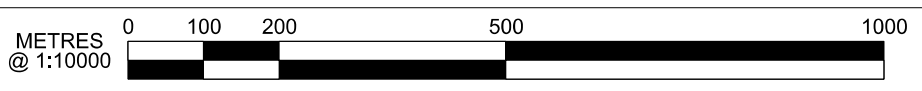
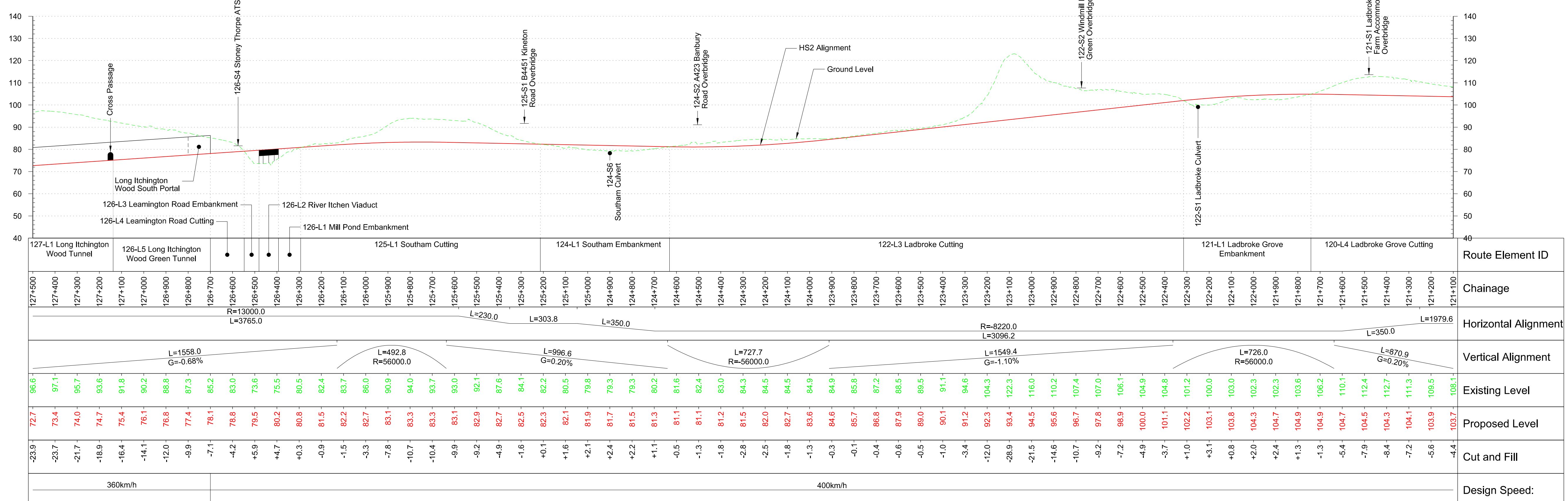


Plan Scale 1:10000



Note: Bridge Profiles indicated at FRL to HS2 track

Rev	Description	Drawn	Checked	Con App	HS2 App
P12	Condition B. Code 1. Fit for hybrid bill submission	JHI	GW	PD	22/01/14
P11	Condition B. Code 1. Fit for hybrid bill submission	NOR	GW	PD	17/12/13
P10	Issued for CP3	NOR	GW	PD	29/11/13
P09	Issued for CP3	RPH	MSB	PD	28/10/13
P08	Revised Interim Condition B	NOR	GW	PD	21/10/13

Scale with caution as distortion can occur.

**Legends/Notes:**

- Depot, station, headhouse or portal building
- Tunnel portal
- Electricity substation
- Land drainage area
- Ecological mitigation pond
- Balancing pond
- Replacement floodplain storage
- Woodland habitat creation
- Wetland habitat creation
- Grassland habitat creation
- Landscape mitigation planting (scrub / woodland)
- Grassed areas
- Sustainable placement
- Public realm
- Engineering earthworks
- Landscape earthworks
- Rail alignment formation
- Returned to suitable development use
- County boundary
- Borough / District boundary
- Community forum boundary
- Watercourse diversion
- Existing watercourse
- Ditches - new
- Hedgerow habitat creation
- Main utility works
- Existing public right of way (PRoW)
- New, diverted or realigned PRoW
- Stopped-up PRoW
- Tunnels external extent
- Rail alignment
- HS2 Access road
- Noise fence barrier
- Chainage (e.g. 10+000)

Registered in England  
Registration No. 06791686  
Registered office:  
Eland House,  
Bressenden Place,  
London, SW1E 5DU

Creator/Organizer  
**Capita Symonds Ineco JV**

HS2 Security Classification  
**INTERNAL**

Zone	Country North	Project/Contract	Country North Design
Design Stage	hybrid bill submission	Discipline/Function	Civil
Drawing Title	Main Line Sheet 35 of 49 Chainage 121+000 to 127+500	Drawn	NOR
		Checked	PD
		Approved	PD
		Date	11/03/2013
		Scale	AS SHOWN
		Size	A1
		Drawing No.	C223-CSI-CV-DPP-030-000002
		Rev.	P12