

Surrender notice with introductory note

The Environmental Permitting (England & Wales) Regulations 2010

Viridor Waste Exeter Limited

Yanley Landfill
Bridgwater Road
Bristol
BS13 8AF

Surrender application number

EPR/BT7272IW/S007

Permit number

EPR/BT7272IW

Yanley Landfill

Permit number EPR/BT7272IW

Introductory note

This introductory note does not form a part of the notice.

The following notice gives notice of the surrender in part of an environmental permit.

The partial surrender is to amend the Installation boundary as a consequence of the proposed construction of the South Bristol Link Road (SBLR) which is being built by North Somerset Council. The current proposals for the SBLR would cross the landfill within the eastern boundary.

The partial surrender affects Cell 9B, both the north-eastern and south-eastern surface water attenuation ponds, a drainage ditch along the eastern boundary and a disused access track. The installation boundary has been amended and a new site plan is included to reflect these changes.

As a result of the partial surrender we are also amending the permit to reflect the following:

The surrender of land and the subsequent construction of the SBLR will result in the loss of three monitoring boreholes associated with the landfill (YN/601, YN/607 and YN/608). The boreholes will be replaced, with the new boreholes situated as close to the existing borehole locations as possible (YN/601a, YN/607a and YN/608a).

Any changes made as a result of the part surrender are set out in the schedules.

The status log of a permit sets out the permitting history, including any changes to the permit reference number.

Status log of the permit		
Description	Date	Comments
Application BT7272	Received 07/11/2002	
Request for information	18/11/2002	Responses dated 28/11/02 & 24/09/03.
Request for information	03/03/2003	Responses dated 18/03/03 & 31/10/03.
Submission of site wide groundwater risk assessment Report No 52293/R1	Received 28/07/2003	Replaces the groundwater assessment made in the application.
Submission of gas risk assessment Report No 52307/R1	Received 22/10/2003	
Letter from Viridor Waste Management	Letter dated 31/10/2003	Trade effluent consent.
Submission from Marcus Hodges Environment Limited	Received 17/11/2003	Response to EA comments on Yanley site wide risk assessment.

Status log of the permit		
Description	Date	Comments
Letter from Viridor Waste Management	Letter dated 01/12/2003	Site Security
Letter from Viridor Waste Management	Letter dated 15/01/2004	Site Security Dust monitoring scheme
Submission of revised text and drawing	Received 11/02/2004	
Permit BT7272 determined	17/03/2004	
Variation Application DP3136SR	Received 31/05/2005	Determined 14/07/05 - Application to accept asbestos wastes.
Variation AP3937LL	Issued 21/02/2008	Agency Template Variation.
Variation Application EPR/BT7272IW/V004	Duly Made 06/11/2012	Application to vary landfill permit into 'definitively closed' phase.
Variation Notice EPR/BT7272IW/V004	Issued 04/02/2013	
Variation Notice EPR/BT7272IW/V005	Issued 20/03/2013	Agency initiated variation to amend landfill gas monitoring requirements.
Agency variation determined EPR/BT7272IW/V006	28/05/2013	Agency variation to implement the changes introduced by IED.
Partial surrender application EPR/BT7272IW/S007	Duly made 13/11/2014	Partial surrender of land and the relocation of three monitoring boreholes and one surface water monitoring point.
Additional information received EPR/BT7272IW/S007	Received 14/01/2015	Updated site plan (Reference:YAN14000)
Additional information received EPR/BT7272IW/S007	Received 15/01/2015	Updated Environmental Monitoring Location Plan (Reference: YAN3000)
Partial surrender EPR/BT7272IW/S007 PAS billing ref: VP3339WL	22/01/2015	Issued with amended site plan to reflect installation boundary change

End of introductory note

Notice of surrender

The Environmental Permitting (England and Wales) Regulations 2010

The Environment Agency in exercise of its powers under regulation 25 of the Environmental Permitting (England and Wales) Regulations 2010 accepts the surrender in part of

Permit number

EPR/BT7272IW

Issued to

Viridor Waste Exeter Limited (“the operator”)

whose registered office is

Peninsula House

Rydon Lane

Exeter

EX2 7HR

company registration number 01403771

to operate a regulated facility at

Yanley Landfill

Bridgwater Road

Bristol

BS13 8AF

to the extent set out in the schedules.

This notice shall take effect from 22/01/2015.

Name	Date
Emma Pemberton	22/01/2015

Authorised on behalf of the Environment Agency

Schedule 1 – conditions to be deleted

None.

Schedule 2 – conditions to be amended

The following conditions are amended as a result of the application made by the operator

- Table S3.1 as referenced by conditions 2.8.1 and 3.5.1, is amended to reference an updated Environmental Monitoring Location Plan. The amended table reads as follows:

Table S3.1 Leachate level limits and monitoring requirements			
Monitoring point reference/ Description As shown on YAN3000	Limit	Monitoring frequency	Monitoring method
YN/312, YN/313, YN/315, YN/317, YN/320, YN/327, YN/332, YN/349b, YN/350a, YN/356a, YN/370a	5.0 m above cell base	Quarterly - Spot reading	Unless otherwise agreed in writing with the Agency monitoring methods used shall be in accordance with Agency guidance document 'Guidance on monitoring of landfill, leachate, groundwater and surface water' (LFTGN02)
YNS505LM, YNS506LM	2.0 m above cell base		
YN/345a, YN/358a, YN/387a, YN/383a, YN/389a, YN/391	5.0 m above cell base	Quarterly – Average	
YNS503LM, YNS504LM	2.0 m above cell base		

- Table S3.3 as referenced by conditions 3.1.1 and 3.5.1, is amended to reference an updated Environmental Monitoring Location Plan. The amended table reads as follows:

Table S3.3 Point source emissions to water (other than sewer) – emission limits and monitoring requirements						
Emission point Ref. & Location As shown on YAN3000	Parameter	Source	Limit (incl unit)	Reference Period	Monitoring Frequency	Monitoring Standard or Method
YNS421 YNS422 YN/404	Suspended Solids	Surface Water	100 mg/l	Spot Sample	Monthly	Unless otherwise agreed in writing with the Agency monitoring methods used shall be in accordance with Agency guidance document 'Guidance on monitoring of landfill, leachate, groundwater and surface water' (LFTGN02)

- Table S3.4 as referenced by conditions 3.1.1 and 3.5.1, is amended to reference an updated Environmental Monitoring Location Plan. The amended table reads as follows:

Table S3.4 Point source emissions to sewer, effluent treatment plant or by tankering or other transfer off-site– emission limits and monitoring requirements				
Emission point Ref. & Location As shown on YAN3000	Parameter	Source	Monitoring Frequency	Monitoring Standard or Method
YN/501	pH Electrical conductivity Ammoniacal Nitrogen Chloride COD BOD Sulphate Sulphide Sulphur Calcium Carbonate Iron Manganese Chromium Copper Nickel Lead Zinc Mercury Mecoprop Toluene m.p-xylene	Leachate	Quarterly	Unless otherwise agreed in writing with the Agency monitoring methods used shall be in accordance with Agency guidance document 'Guidance on monitoring of landfill, leachate, groundwater and surface water' (LFTGN02)
	Hazardous Substances Suite	Leachate	Every Four Years	

- Table S3.5 as referenced by conditions 3.1.5 and 3.5.1, is amended to reference an updated Environmental Monitoring Location Plan. The amended table reads as follows:

Table S3.5 Trigger levels for emissions into groundwater and monitoring requirements					
Monitoring point reference As shown on YAN3000	Parameter	Limit (including unit)	Reference Period	Monitoring frequency	Monitoring standard or method
YN/605	Ammoniacal Nitrogen	2.0 mg/l	Spot Sample	Quarterly	Unless otherwise agreed in writing with the Agency monitoring methods used shall be in accordance with Agency guidance document 'Guidance on monitoring of landfill, leachate, groundwater and surface water' (LFTGN02)
YN/608a					
YN/634	Chloride	250 mg/l			
	Mecoprop	0.1 µg/l		Annually	
	Toluene	4.0 µg/l			
	m.p – xylene	3.0 µg/l			
	Mercury	0.4 µg/l			

- Table S3.6 as referenced by conditions 3.1.7 and 3.5.1, is amended to reference an updated Environmental Monitoring Location Plan. The amended table reads as follows:

Table S3.6 Landfill gas in external monitoring boreholes – limits and monitoring requirements				
Monitoring point Ref. /description As shown on YAN3000	Parameter	Limit (including units)	Monitoring frequency	Monitoring standard or method
YN/601a YN/602 YN/603 YN/604 YN/605 YN/606 YN/607a YN/608a YN/610 YN/611 YN/612 YN/613 YN/614 YN/616 YN/617 YN/619a YN/626 YN/627 YN/628 YN/629 YN/630 YN/631 YN/632 YN/633	Methane	1 %v/v	Monthly	Unless otherwise agreed in writing with the Agency monitoring methods used shall be in accordance with Agency guidance document 'Guidance on the management of landfill gas' (LFTGN03)
	Carbon Dioxide	no limit		
	Oxygen	no limit		
	Atmospheric pressure (mbar)	no limit		

- Table S3.9 as referenced by condition 3.5.1, is amended to reference an updated Environmental Monitoring Location Plan. The amended table reads as follows:

Table S3.9 Leachate– other monitoring requirements			
Emission point reference or source or description of point of measurement As shown on YAN3000	Parameter	Monitoring frequency	Monitoring standard or method
YN/320 YN/327 YN/332 YN/383a YN/387a YN/391 YNS503LM YNS504LM	pH Electrical conductivity, Ammoniacal Nitrogen, Chloride, COD, BOD, Sulphate, Sulphide, Sulphur, Calcium Carbonate, Iron, Manganese, Chromium, Copper, Nickel, Lead, Zinc, Mercury, Mecoprop, Toluene, m.p-xylene	Quarterly	Unless otherwise agreed in writing with the Agency monitoring methods used shall be in accordance with Agency guidance document 'Guidance on monitoring of landfill, leachate, groundwater and surface water' (LFTGN02)
YN/327 YN/387a YN/391 YNS503LM YNS504LM	Hazardous Substances Suite	Every Four Years	

- Table S3.10 as referenced by condition 3.5.1, is amended to reference an updated Environmental Monitoring Location Plan. The amended table reads as follows:

Table S3.10 Surface water – other monitoring requirements			
Emission point reference or source or description of point of measurement As shown on YAN3000	Parameter	Monitoring frequency	Monitoring standard or method
YN/403 YN/404 YN/405 YNS421 YNS422	pH Electrical Conductivity Ammoniacal Nitrogen Chloride BOD COD Suspended Solids	Monthly	Unless otherwise agreed in writing with the Agency monitoring methods used shall be in accordance with Agency guidance document 'Guidance on monitoring of landfill, leachate, groundwater and surface water' (LFTGN02)

- Table S3.11 as referenced by condition 3.5.1, is amended to reference an updated Environmental Monitoring Location Plan. The amended table reads as follows:

Table S3.11 Groundwater – other monitoring requirements			
Emission point reference or source or description of point of measurement As shown on YAN3000	Parameter	Monitoring frequency	Monitoring standard or method
Mercia Mudstone YN/601a, YN/603, YN/605, YN/608a, YN/611, YN/614, YN/616, YN/619, YN/626, YN/628, YN/630, YN/633, YN/634	Groundwater level	Quarterly	Unless otherwise agreed in writing with the Agency monitoring methods used shall be in accordance with Agency guidance document 'Guidance on monitoring of landfill, leachate, groundwater and surface water' (LFTGN02)
Up-gradient YN/619, YN/630, YN/633 Down-gradient YN/603, YN/605, YN/608a, YN/634	pH Electrical conductivity Ammoniacal Nitrogen Chloride COD BOD TON Nitrate Nitrite Phosphate Potassium Alkalinity Sodium Calcium Magnesium Copper Cadmium Chromium Lead Nickel Zinc Iron Manganese	Quarterly	

Table S3.11 Groundwater – other monitoring requirements			
Emission point reference or source or description of point of measurement As shown on YAN3000	Parameter	Monitoring frequency	Monitoring standard or method
	Sulphate Mecoprop		
	As quarterly plus; hazardous substances screen	Every Four Years	
Coal Measures YN/602, YN/604, YN/607a, YN/610, YN/612, YN/613, YN/619a, YN/627, YN/629, YN/631, YN/632	Groundwater level	Quarterly	
Up-gradient YN/619a, YN/629, YN/631 Down-gradient YN/607a, YN/610, YN/612	pH Electrical conductivity Ammoniacal Nitrogen Chloride	Quarterly	
	As quarterly plus; COD BOD TON Nitrate Nitrite Phosphate Potassium Alkalinity Sodium Calcium Magnesium Copper Cadmium Chromium Lead	Annually	

Table S3.11 Groundwater – other monitoring requirements			
Emission point reference or source or description of point of measurement As shown on YAN3000	Parameter	Monitoring frequency	Monitoring standard or method
	Nickel Zinc Iron Manganese Sulphate Mecoprop		
	As Annually plus; Hazardous substances screen	Every Four Years	

Schedule 3 – conditions to be added

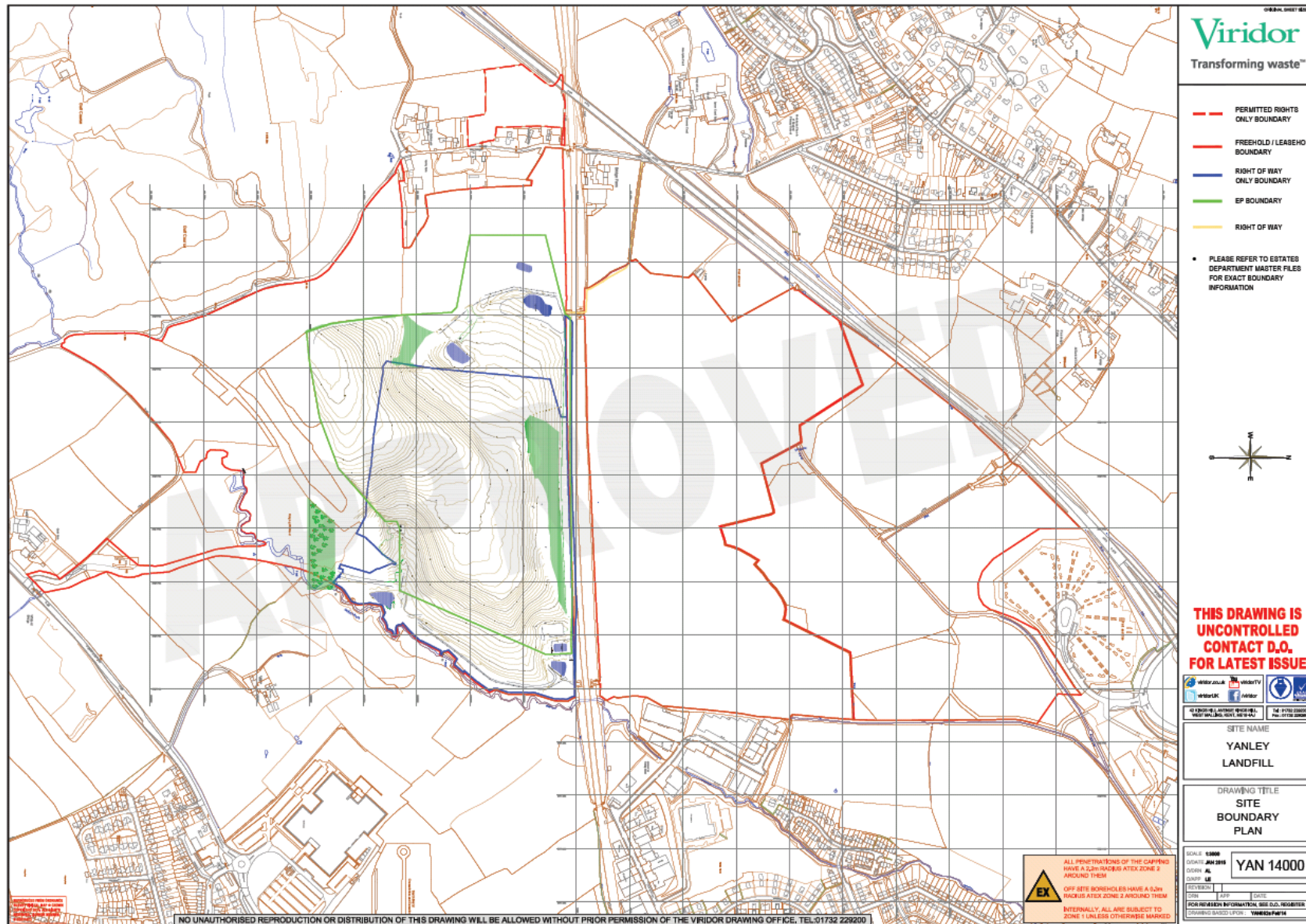
None.

Schedule 4 – amended plan

The area of the site is reduced to that shown edged in green in the attached plan.

Amended plan included on the following page.

Schedule 4 – amended plan



“©Crown Copyright. All rights reserved. Environment Agency, 100026380, 2014.”