



Layout Plan  
Scale 1:5000



**LEGEND**

Denotes maintained Channels

**Summary Description of Proposed Works**

**PHASE 3**  
Deepening of existing conventional quays by modifying line and level of 'Ballast' and 'Bulwark' quays together with reclamation of circa 2,600m<sup>2</sup> to 'Little Channel' to provide a total of 360 linear metres of berthing face dredged to 7.5mBCD

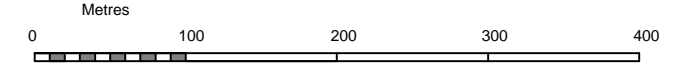
**Setting Out Points**

A1	50 42.687N, 001 59.290W
B1	50 42.670N, 001 59.225W
C1	50 42.628N, 001 59.186W
C2	50 42.524N, 001 59.162W
C3	50 42.520N, 001 59.203W
C4	50 42.540N, 001 59.204W

**NOTES**

1. Building and land uses shown are indicative only.

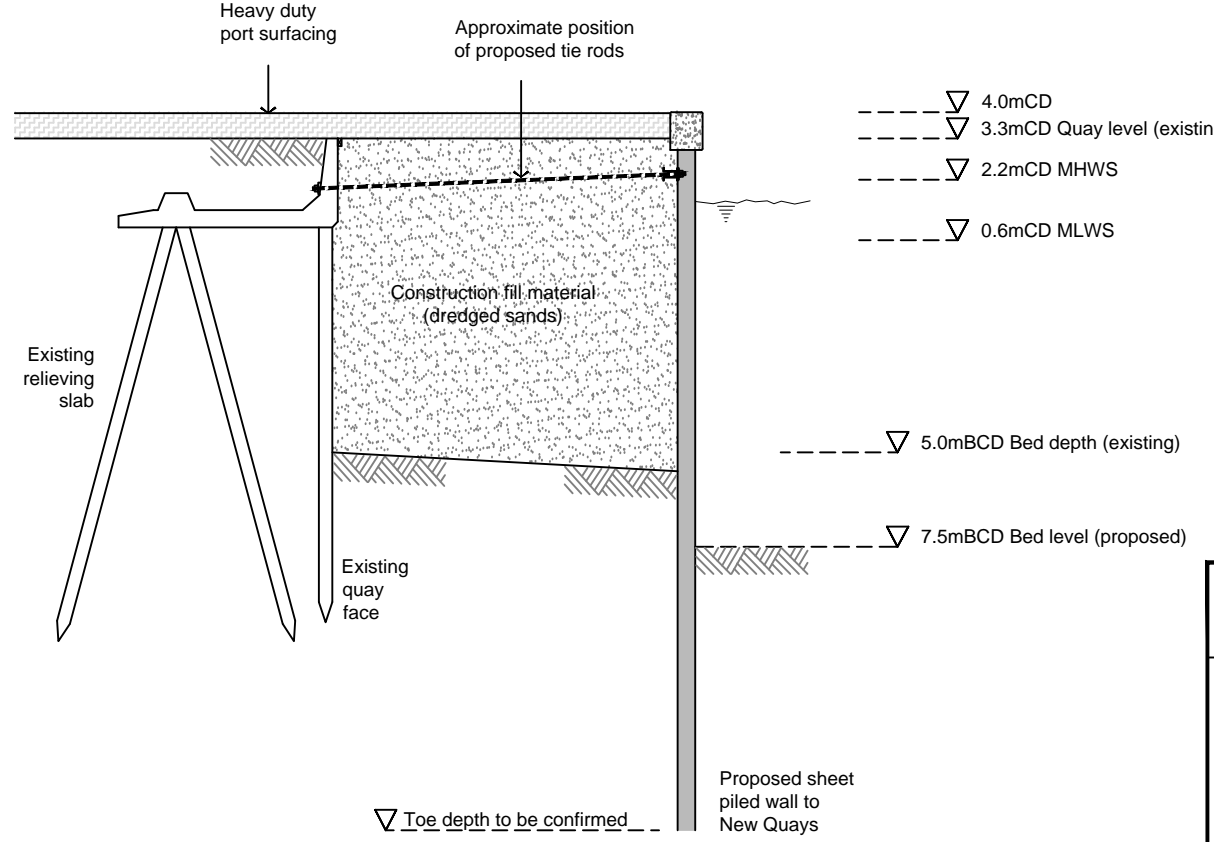
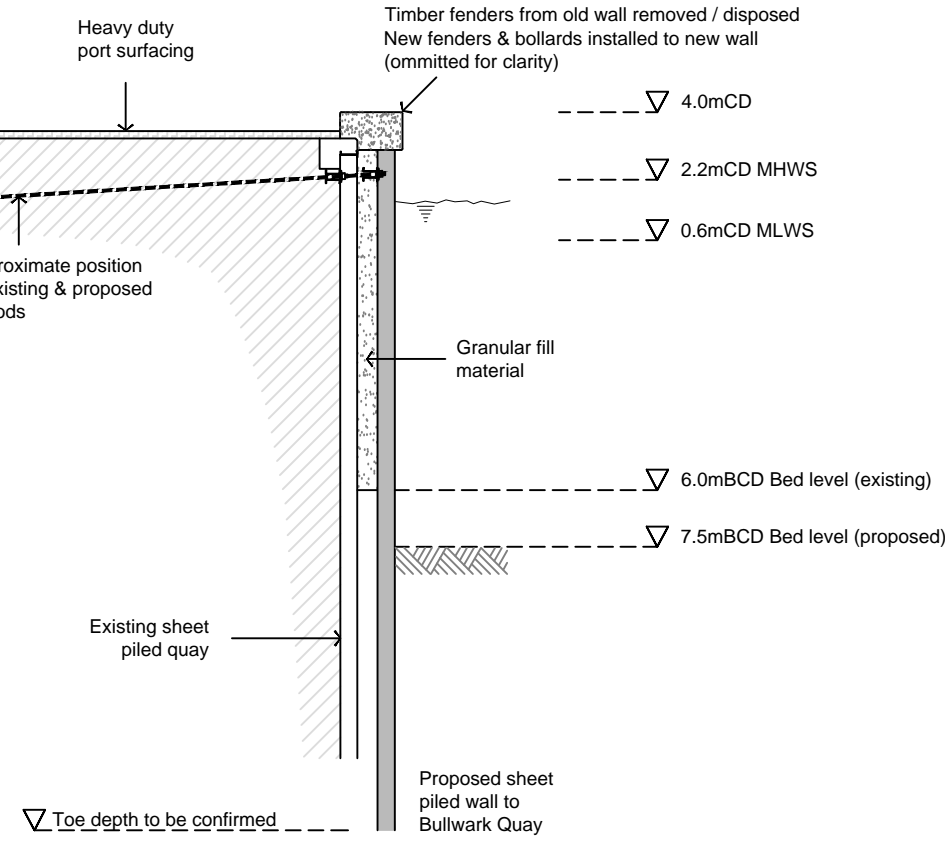
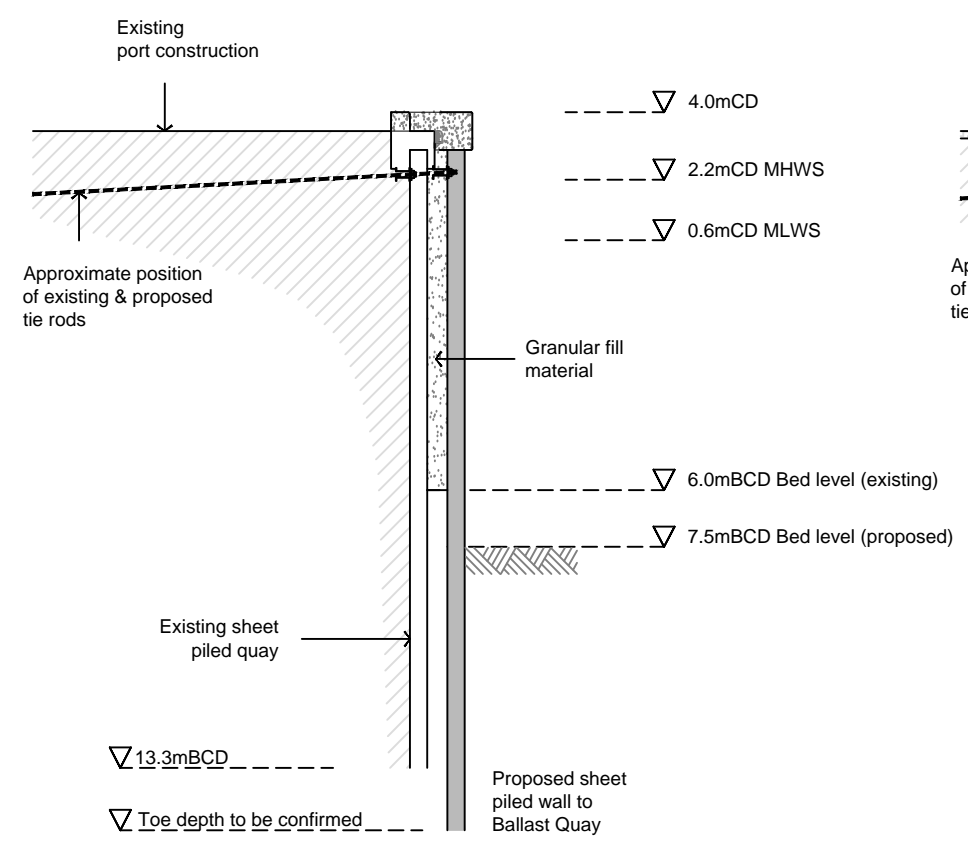
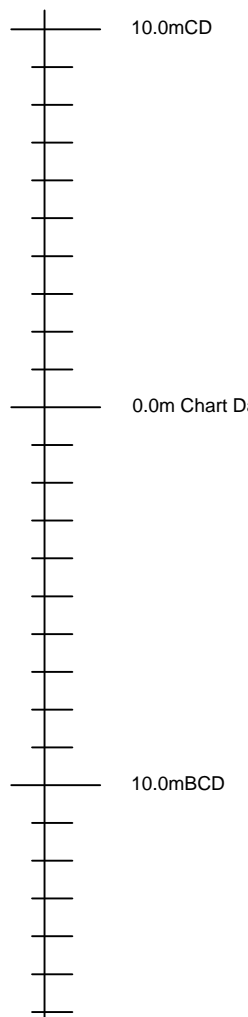
Based upon Ordnance Survey Map with the sanction of the Controller of H.M. Stationery Office



Section 1-1  
Scale 1:200

Section 2-2  
Scale 1:200

Section 3-3  
Scale 1:200



revision	amendment	date

**POOLE HARBOUR COMMISSIONERS**

The Poole Harbour Revision (Works)  
Order 2014

PHASE 3 WORKS

drawn	pba
date	20.01.2014
scale	as stated @ A2

Andy Ramsbottom MSc CEng MICE  
Harbour Engineer  
Harbour Office, 20 New Quay Road  
Hamworthy, Poole, Dorset. BH15 4AF

drawing no. HRO3

revision